



**WASTE DISCHARGE LICENCE
APPLICATION**

**Consultation and Communication
Plan**

Nathan River Resources

Bing Bong Loading Facility

Operator name:	NRR Services Pty Ltd
Project name:	Nathan River Project
Authorisation:	1062-01
Date:	July 2024
Document distribution list:	Department of Environment, Parks and Water Security (DEPWS) NRR Services Pty Ltd

1 TABLE OF CONTENTS

1	INTRODUCTION.....	3
1.1	Operator Details	3
1.2	Title Details	3
1.3	Project Details	3
1.4	Consultation and Communication	5

Figures

Figure 1	Nathan River Project Regional Location	4
-----------------	--	---

Tables

Table 1	Summary of Operator details	3
Table 2	Mineral Titles for the Nather River Project	3
Table 3	Relevant Stakeholders	5
Table 4	Consultation Details	6

1 INTRODUCTION

1.1 Operator Details

Operator details for the Nathan River Project (NRP) are summarised in **Table 1** below.

Table 1 Summary of Operator details

Operator:	NRR Services Pty Ltd
ABN:	38 634 895 800
Web page	https://www.nathan-river.com/
Email	Simon.Peat@nathan-river.com
Postal and Street address:	47 Callantina Road, Hawthorn, Victoria, 3122
Key contact/s:	Simon Peat – Chief Executive Officer Simon.peat@nathan-river.com 0418 124 024

1.2 Title Details

The mineral title details relevant to this application are summarised in **Table 2**.

Table 2 Mineral Titles for the Nathan River Project

Title Number	Title Holder	Expiry Date	Underlying Land Tenure
AA29692	NRR Mining Pty Ltd	28/06/2042	BBLF offshore
ML28962	NRR Mining Pty Ltd	28/06/2042	Mining administration facility

1.3 Project Details

The NRP (previously referred to as the Roper Bar Iron Ore Mine (RBIOM)) is wholly operated by NRR Services Pty Ltd (NRR) since acquiring the NRP in 2019 from the previous operators, Western Desert Resources (WDR). The NRP is located approximately 530 kilometres (km) southeast of Darwin within the Gulf of Carpentaria and is comprised of three main operation domains: the mine, the haul road and the Bing Bong Loading Facility (BBLF). The mine is located within mining leases (ML) 28962, 28267, 28266, 28963 and 28264. The haul road, privately owned and operated by NRR, stretches for 171 km, connecting the mine and the BBLF allowing the haulage of material to the BBLF. The BBLF is situated within ML 29628, located on the south-western coast of Gulf of Carpentaria approximately 50 km north of Borroloola. Glencore’s McArthur River Mine (MRM) operates a larger loading facility at the BBLF and is the overarching controller of the Port. The regional location of the NRP is presented in **Figure 1**.

The previous operator, WDR commenced mine construction and operations in 2013 following the approval of the Roper Bar Iron Ore Project (RBIOP) Environmental Impact Statement (EIS) under the previous *Environmental Assessment Act*. Upon acquiring the RBIOP, NRR submitted a Mining Management Plan (MMP) in accordance with the *Mining Management Act 2001*, receiving approval in the form of mining authorisation 1062 to commence operations in 2020.

NRR currently operates the NRP under the approved Variation of Authorisation 1062-01 granted in October 2023 which authorises the recommencement of mining operations, haulage and BBLF shipping operations. To further facilitate shipping operations at the BBLF, NRR wishes to conduct a maintenance dredging program of the transshipment zone at the BBLF. A critical component to the proposed dredging program is a waste discharge licence (WDL) which will allow the return of decanted dredge water back to the receiving marine waters of the BBLF swing basin.

NRR wishes to apply for a new WDL under section 74 of the *Water Act 1992 (NT)*. NRR has previously held a WDL (246-01) from 2020 to 2022, authorising the discharge of dredged seawater back to the BBLF swing basin. Given the expiry of the previous WDL, NRR is seeking a new WDL which largely replicates the conditions of WDL 246-01 relevant to the discharge of dredge decant water at the BBLF. This WDL application does not proposed nor seek any waste discharge regimes for the mine.

To supplement the WDL Form 74, this supporting information document includes all the required information as specified in the NT EPA's *Guidelines on Waste Discharge Licensing under the Water Act*.

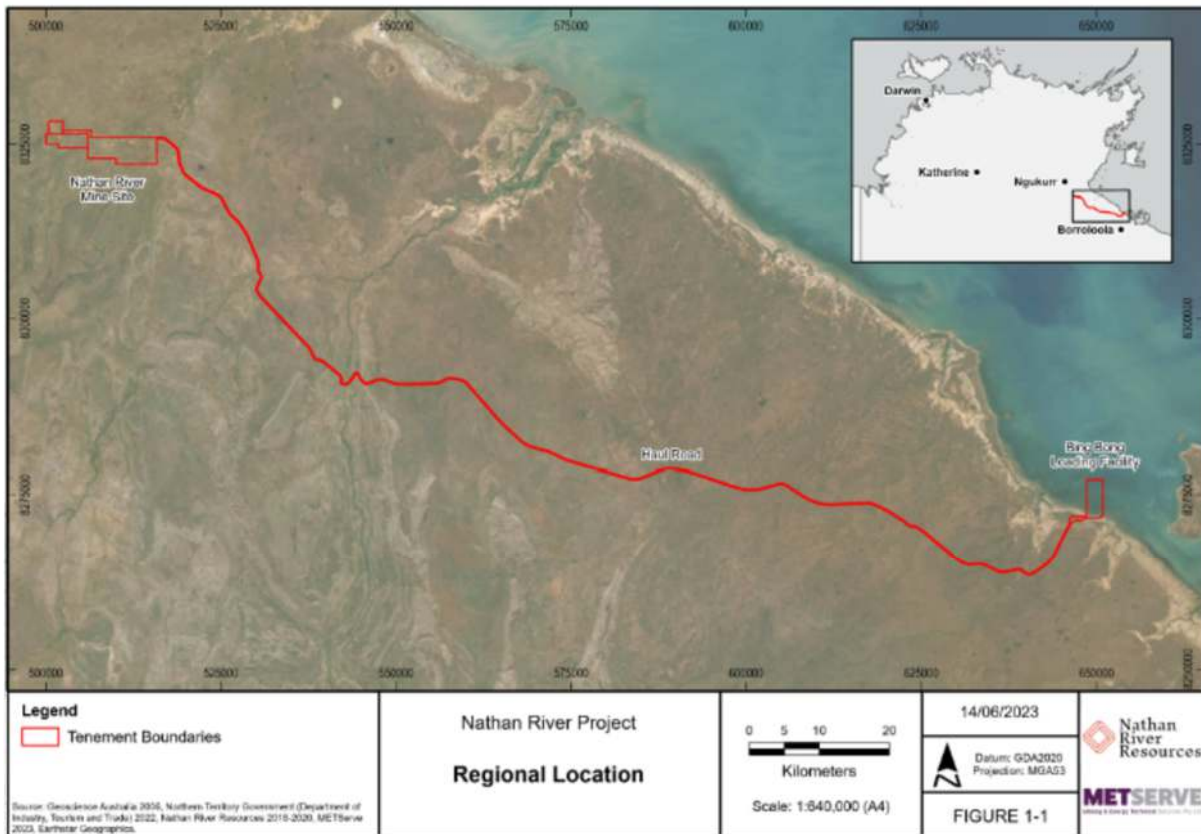


Figure 1 Nathan River Project Regional Location

1.4 Consultation and Communication

A Consultation and Communication Plan has been developed in support of the NRR’s BBLF WDL application. The plan has been developed based on a review of:

- All stakeholder communications documented as part of the RBIOP EIS in 2012; and
- Stakeholders identified in the current NRP MMP.

The stakeholders which are considered relevant to this WDL application are summarised in **Table 3** below.

Table 3 Relevant stakeholders

Stakeholder Group	Stakeholder
NT Government (relevant departments)	Department of Industry, Trade and Tourism (DITT)
	Department of Parks, Environment and Water Security (DEPWS)
	NT Environmental Protection Authority (NT EPA)
	Parks & Wildlife Commission of the NT
Local Government	Roper Gulf Regional Council
Local Communities	Borrooloola
Industry	Glencore’s McArthur River Mining (MRM)
NGO’s	Northern Land Council (NLC)
	Amateur Fishermen’s Association of the Northern Territory (AFANT)
Local Clubs / Businesses	King Ash Bay Fishing Club

Table 4 below summarises the stakeholder consultation process conducted and includes details of:

- Key stakeholders consulted with including local and NT government departments, local communities, traditional owners, and other Non-Government Organisations (NGOs);
- Method of consultation;
- Consultation dates;
- Key points of discussion / concern; and
- Ongoing consultation planned.

NRR intend to undertake the consultation process once the WDL application has been submitted, and in consideration of advice provided by NT EPA.

In support of this consultation process, NRR has an established Community Liaison and Complaints Register, which it will utilise for the duration of the WDL period. All complaints received shall be recorded in the existing complaints register which NRR currently implements, investigated and appropriate action taken if required.

Table 4 Consultation Details

Stakeholder	Consultation Method	Date Consulted (or planned)	Key Points of Discussion / Concern	Planned consultation for duration of WDL period
NT Government (relevant departments)				
DITT	Written Communication	At time of WDL application submission.	TBA	As required throughout the MMP amendment assessment process.
DEPWS	Submission of WDL Application	At time of WDL application submission.		As required basis.
NT EPA	Submission of WDL Application	At time of WDL application submission.		As required basis.
PWC NT	Written Communication	Post-submission, on advice from NT EPA.	Letter sent by NRR outlining NRR's proposed activities, the approval process underway and NRR contact details if any queries or concerns.	As required basis.
Local Government				
Roper Gulf Regional Council	Written Communication	Post-submission, on advice from NT EPA.	Letter sent by NRR outlining NRR's proposed activities, the approval process underway and NRR contact details if any queries or concerns.	As required basis.
Local Communities				
Borroloola	Meeting	Post-submission, on advice from NT EPA.	Planned meetings with NLC and relevant Traditional Owners to discuss proposed and future works.	As required basis.

Stakeholder	Consultation Method	Date Consulted (or planned)	Key Points of Discussion / Concern	Planned consultation for duration of WDL period
Industry				
Glencore's McArthur River Mining	Meeting	During WDL application preparation.		Ongoing communications with MRM throughout dredging program.
	Email	Throughout dredging campaign, specifically: Notification of commencement and cessation of dredging/ discharge activities, within 5 business days of each event.	Notification of commencement and cessation of activities; and Provision of discharge monitoring data upon request.	Ongoing communications with MRM throughout dredging program and intermittent communications, as required, in periods when dredging is not occurring.
NGOs				
NLC	Written Communication	Post-submission, on advice from NT EPA.	Letter sent by NRR outlining NRR's proposed activities, the approval process underway and NRR contact details if any queries or concerns.	As required basis.
AFANT	Written Communication	Post-submission, on advice from NT EPA.		
Local Clubs / Businesses				
KAB Fishing Club	Written Communication	Post-submission, on advice from NT EPA.	Letter sent by NRR outlining NRR's proposed activities, the approval process underway and NRR contact details if any queries or concerns.	As required basis.