



## Container Deposit Scheme

# Container Deposit Scheme Quarterly Report

1 July to 30 September 2013

**TABLE OF CONTENTS**

<b>1</b>	<b>Introduction.....</b>	<b>1</b>
<b>2</b>	<b>Key Definitions.....</b>	<b>1</b>
<b>3</b>	<b>Operation of the CDS.....</b>	<b>2</b>
<b>4</b>	<b>Containers Redeemed at Collection Depots.....</b>	<b>2</b>
	Table 1: Number of Containers Redeemed by Material Type at Collection Depots ....	2
	Figure 1: Number of Containers Redeemed at Collection Depots by Quarter .....	3
	Figure 2: Collection Depot Redemptions by Material Type.....	3
	4.1 Redemptions by Region .....	4
	Figure 3: Collection Depot Redemptions by Region.....	4
<b>5</b>	<b>Return rates .....</b>	<b>4</b>
	Figure 4: Container Return Rate by Quarter .....	5

## 1 Introduction

The Northern Territory Container Deposit Scheme (CDS) commenced on 3 January 2012. The aim of the program is to reduce beverage container litter and increase resource recovery across the Northern Territory.

Five CDS Coordinators are approved to operate in the Northern Territory. They are; NT Coordinators, Envirobank NT, Statewide Recycling, NT Recycling Solutions and Marine Stores. Their role is to work with the collection depots and beverage manufactures to recycle, reuse or appropriately dispose of approved containers. Territorians can collect their 10 cents in return for each approved container at a collection depot.

During the July to September 2013 quarter depots were open in Berrimah, Pinelands, Katherine, Alice Springs, Tennant Creek and Elliot. Reverse Vending Machines were operating in Parap, Nightcliff, Milingimbi and at Charles Darwin University.

Two new Collection Depots have been granted approval during the quarter in Alice Springs and Tennant Creek.

## 2 Key Definitions

*Containers returned:* the number of containers that have been aggregated and returned to Coordinators from Collection Depots.

*Return rates:* the total percentage of container numbers that have been returned to Coordinators in relation to the total number of containers sold in the Territory.

*Containers redeemed:* the number of approved containers that have been accepted by Collection Depots to give a 10 cent refund to the community.

*PET (polyethylene terephthalate):* the product plastic beverage containers are made from (for example, water bottles).

*HDPE (high-density polyethylene):* materials that some juice containers are made from.

*LPB (liquid paper board):* material utilised in the packaging of beverages such as popper juices. LPB also includes ASEPTIC which is the packaging of beverages in a sterile container, used for example in long life UHT beverages.

*Other containers:* steel, foil sachets and other plastics including biodegradable, photo-sensitive and plant-based plastics. Also includes resin types established since 1988 and those marked with the number 7.

### 3 Operation of the CDS

In March 2013, the Federal Court of Australia ruled certain components of the Container Deposit Scheme as being inconsistent with the *Mutual Recognition Act 1992* (Cth) (MRA). As a result a number of scheme participants withdrew from the CDS which rendered the scheme ineffective. The Northern Territory Government funded the CDS from 27 March 2013 until 13 August 2013 to allow time for a permanent exemption to the MRA to progress.

In August 2013, the Northern Territory received a permanent exemption from the requirements of the MRA. On 14 August 2013 the NT Government ceased funding the scheme, and the CDS recommenced as an industry run scheme under the reinstated *Environment Protection (Beverage Containers & Plastic Bags) Act*. A number of Collection Depots closed temporarily at that time whilst agreements with CDS Coordinators were being re negotiated. At the end of this quarter, Collection Depots in Alice Springs, Tennant Creek and Elliot remained closed.

Coordinator data is limited to the period 14 August to 30 September 2013 due to the scheme being managed by the NT Government during the beginning of this quarter. As a result, sales data in this report is based upon the same period in 2012.

### 4 Containers Redeemed at Collection Depots

A total of 14 685 885 containers were redeemed at Collection Depots over quarter three 2013 (see Table 1). The redemption of these containers equates to over \$1.4 million in deposits that have been paid out to families, schools, community organisations and commercial operators in the Northern Territory over the July to September 2013 period.

**Table 1: Number of Containers Redeemed by Material Type at Collection Depots**

Container Material	Containers Redeemed at Collection Depots
Aluminium	7 897 875
PET	2 363 888
HDPE	98 324
Glass	3 840 908
LPB	484 809
Other	81
<b>TOTAL</b>	<b>14 685 885</b>

Figure 1 shows the number of containers redeemed at Collection Depots in each quarter since the commencement of the scheme in January 2012.

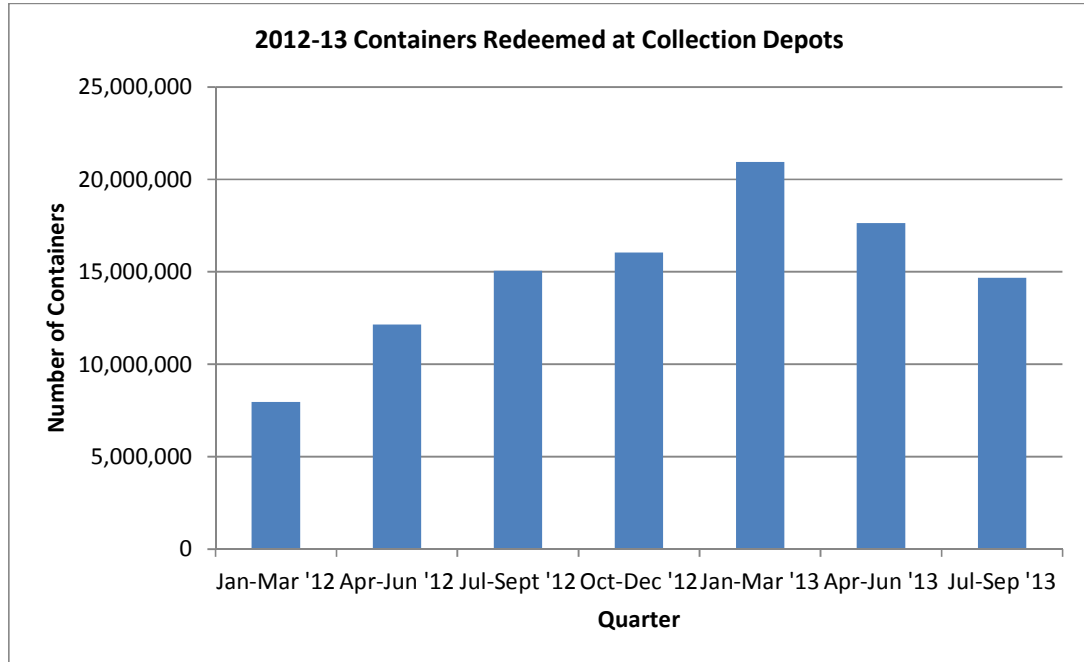


Figure 1: Number of Containers Redeemed at Collection Depots by Quarter

The July to September quarter for 2013 saw a decrease in the number of containers redeemed at Collection Depots. This decline is likely to be attributed to the temporary closure of some Collection Depots across the Territory on 14 August 2013 reducing access to the scheme.

The percentage of containers redeemed at Collection Depots in the July to September 2013 quarter is shown by material type in figure 2.

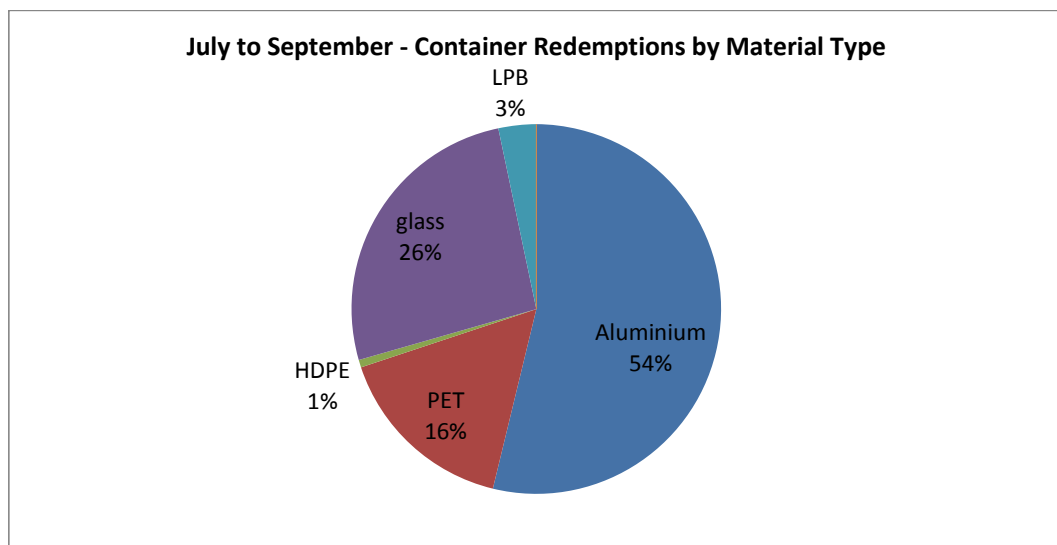


Figure 2: Collection Depot Redemptions by Material Type

Of the containers redeemed in the July to September 2013 quarter, 54% of all containers redeemed were aluminium, 26% were glass and 16% were PET (see Figure 2).

#### 4.1 Redemptions by Region

Collection Depots operating in the Greater Darwin Region include the depots located in Berrimah, Pinelands, Parap, Nightcliff and Charles Darwin University. Areas outside of Darwin (Other) include depots in Katherine, Alice Springs, Tennant Creek, Elliot, and Milingimbi:

- 12 million containers were redeemed in the greater Darwin region; and
- 2.69 million containers were redeemed in areas outside of Darwin (see Figure 3).

Figure 3 shows a comparison of the number of containers by material type collected in the greater Darwin region to the number outside of Darwin.

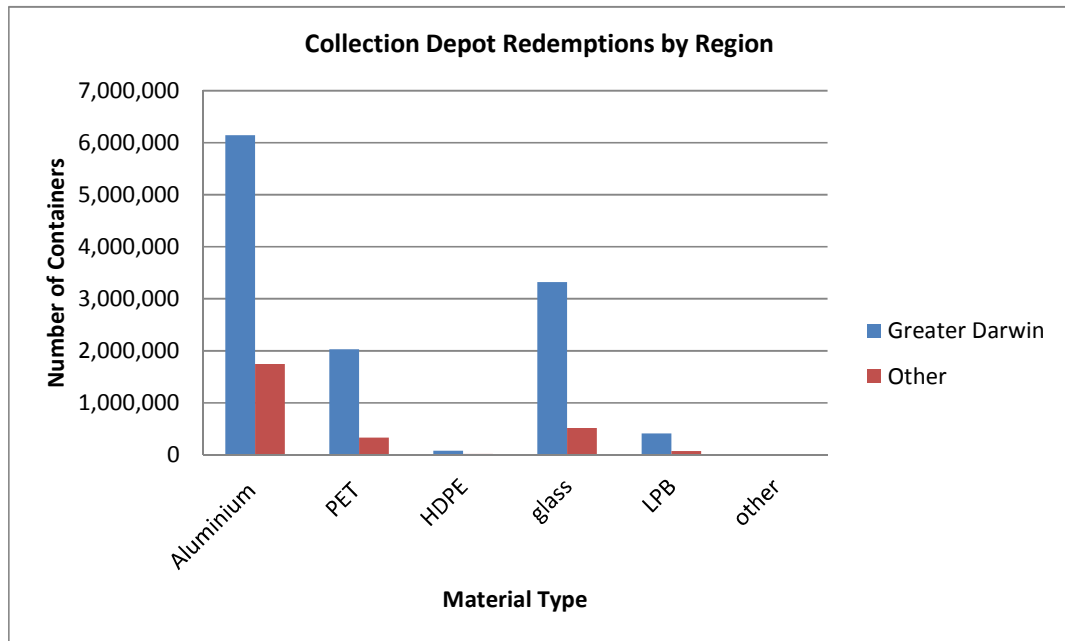


Figure 3: Collection Depot Redemptions by Region

## 5 Return rates

Based on the sales figures from the same period in 2012, it is estimated that 40 352 547 containers were sold into the Northern Territory in the July to September 2013 quarter.

As shown in Figure 4, the July to September quarter shows a drop in return rate to 35.65%. Since the commencement of the scheme in January 2012 an overall rate of 39.84% has been achieved.

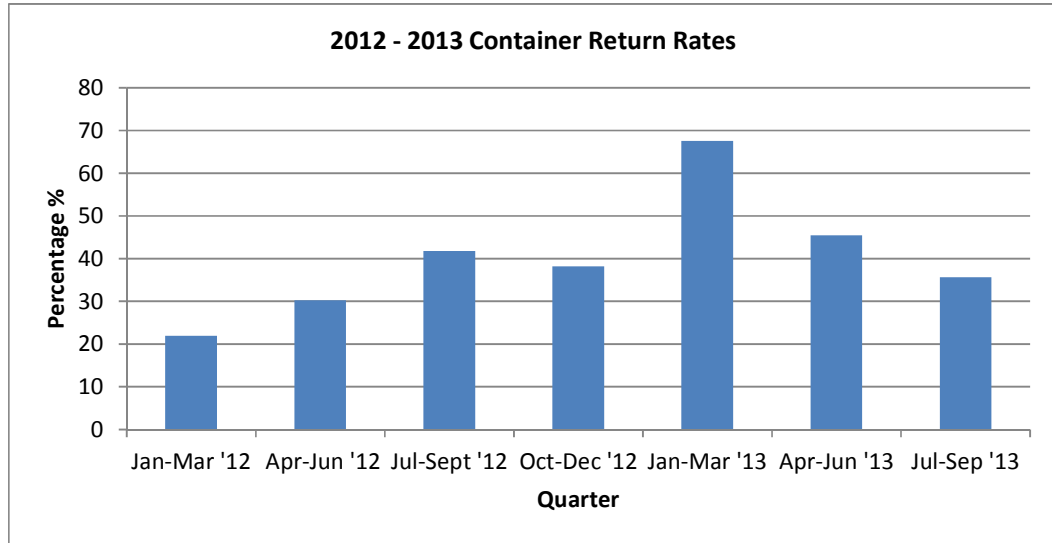


Figure 4: Container Return Rate by Quarter

## 6 Territory Collection Depots

With the return of the CDS to an industry run scheme, Collection Depots located in Darwin, Katherine, Tennant Creek, Elliot and Alice Springs closed temporarily to allow arrangements with CDS Coordinators to be renegotiated. The Katherine Collection Depot reopened on 24 September 2013 and the Elliot Collection Depot expects to reopen in October 2013.

During the quarter, two approvals were granted for Collection Depots which provides the return of access to the scheme in Alice Springs and Tennant Creek.