

APPENDIX AA: EMERGENCY RESPONSE PLAN

TNG LIMITED

EMERGENCY RESPONSE PLAN

**DARWIN PROCESSING
FACILITY**

MIDDLE ARM, DARWIN, NORTHERN
TERRITORY

NOVEMBER 2019



Completed by: Animal Plant Mineral Pty Ltd

ABN: 86 886 455 949

Tel: (08) 6296 5155

Fax: (08) 6296 5199

Address : 47 Caroline Retreat, Henley Brook,
Western Australia 6055

Website: www.animalplantmineral.com.au

For further information on this report please contact:

Ms Sharon Arena

Tel: 0419 934 461

Email: sharon@animalplantmineral.com.au

CONTENTS

1	INTRODUCTION	4
1.1	Purpose	4
1.2	Objective	4
1.3	Emergency Situations	4
2	PROJECT DETAILS	5
2.1	Overview	5
2.2	Proponent Details	5
2.3	Emergency Contacts	6
2.4	Muster Points.....	7
2.5	Emergency Management Team Structure and Responsibility.....	7
3	EMERGENCY RESPONSE EQUIPMENT.....	8
3.1	First Aid Equipment	8
3.2	Fire Response Equipment	8
4	EMERGENCY PROCEDURES	9
4.1	Alarm.....	9
4.2	All Clear	9
4.3	Re-entry	9
4.4	Debrief	9
5	EDUCATION AND TRAINING.....	10
5.1	Site Induction	10
5.2	Safety Moments.....	10
5.3	Toolbox Talks	10
6	STATUTORY NOTIFICATION PROCEDURES	11
7	EMERGENCY RESPONSE ACTIONS	13
7.1	Significant discharge of pollutants into marine environment	14
7.2	Significant release of hazardous materials due to vehicle or rail accident.....	15
7.3	Significant release of hazardous material or gas explosion within Project Area	16
7.4	Transmissible/Mosquito-borne disease outbreak.....	17
7.5	Disturbance of Sacred Site	18
8	PREVIOUS PERIOD PERFORMANCE AND REVIEW.....	19
9	APPENDICES	20

LIST OF APPENDICES

Appendix A: NTEPA Section 29 Notification of Environmental Incident Form	
Appendix B: NTEPA Harmful Substances Report – Oil.....	
Appendix C: NTEPA Harmful Substances Report – Noxious Liquid Substances.....	
Appendix D: NTEPA Harmful Substances Report – Packaged Harmful Substances.....	
Appendix E: NT WorkSafe Sections 35 to 39 Incident Notification Form	

LIST OF TABLES

Table 1-1: Emergency Situations	4
Table 2-1: Proponent Details	5
Table 2-2: Emergency Contacts	6
Table 2-3: Emergency Management Team Responsibilities.....	7
Table 6-1: Regulatory Body Reporting Requirements	11

DEFINITIONS

Abbreviation	Meaning
TNG	TNG Limited

LIST OF ABBREVIATIONS

Abbreviation	Meaning
AAPA	Aboriginal Areas Protection Authority
EIS	Environmental Impact Statement
EMP	Environmental Management Plan
EMT	Emergency Management Team
EOO	Emergency Operations Officer
ERC	Emergency Response Coordinator
ERP	Emergency Response Plan
UHF	Ultra High Frequency

1 INTRODUCTION

1.1 PURPOSE

This Emergency Response Plan (**ERP**) has been prepared to provide a response framework to specific emergencies at the Darwin Processing Facility. Should control measures installed at the site fail, TNG Limited (**TNG**) and other site personnel (e.g. contractors) will operate in accordance with this ERP, notifying relevant stakeholders and regulators as detailed.

The ERP forms part of the Environmental Management Plan (**EMP**). However, the document has been developed as a standalone plan to facilitate responses to emergencies. It covers the construction and operation phases and its purpose is to:

- Provide a process for identifying, assessing and managing emergencies to minimise impact to human health and surrounding environment;
- Provide internal and external reporting requirements for emergencies; and
- Review and assess historical and/or industry specific incidents to inform future management of emergencies (subsequent ERP revisions).

1.2 OBJECTIVE

The ERP sets to outline standardised responses to ensure emergency situations are captured sufficiently. The main objectives of the ERP are:

- Outline potential emergency situations
- Identify initial responses (emergency response)
- Provide communication requirements
- Establish requirements for site representatives
- Provide statutory reporting requirements
- Provide investigation framework (where applicable).

1.3 EMERGENCY SITUATIONS

The most likely emergency situations pertaining to the Project have been established through the EIS process. A summary of the emergency situations covered by this plan are provided in Table 1-1. In addition to this ERP, a Fire Management Plan is also included as an appendix to the EIS.

Table 1-1: Emergency Situations

Situation	Page No.
Significant discharge of pollutants into marine environment	14
Significant release of hazardous materials due to vehicle or rail accident	15
Significant release of hazardous materials or gas explosion within Project Area	16
Transmissible/Mosquito-borne disease outbreak	17
Disturbance of Sacred Sites	18

2 PROJECT DETAILS

2.1 OVERVIEW

TNG Limited (TNG) proposes to construct and operate the Darwin Processing Facility at Lot 1817, Hundred of Ayers, Middle Arm Industrial Precinct, (658 Channel Island Road) Wickham. The Project is approximately 16 kilometres (km) south east of Darwin, Northern Territory (NT). The purpose of the Project is processing magnetite concentrate (“concentrate”) to produce higher value products for export from East Arm Wharf to international customers.

The Project will comprise:

- Clearing of a partially vegetated allotment formerly utilised for extractive industries;
- Construction and operation of a magnetite concentrate Processing Facility;
- Development of support infrastructure, including workshops and stores, office/administration buildings, laydown areas, water storage and treatment facilities, car parking, electrical sub-station, access roads and outfall pipeline;
- Construction and operation of a rail siding, unloading and loadout facilities on the Adelaide-Darwin railway; and
- Loading of trains at the rail siding, with products to be railed to East Arm Wharf.

The design life of the Project is 40 years. The site is within the Litchfield Council Local Government Area and is adjacent to Elizabeth River, near the Elizabeth River Bridge.

The Development Envelope is approximately 264 ha. The site has been extensively disturbed by previous uses. In the development envelope 180 ha has been previously cleared or is in Degraded condition. Approximately 67 ha of the development envelope has been previously cleared and not rehabilitated, 19 ha is associated with existing infrastructure and is maintained with minimal vegetation cover, 93 ha has native vegetation that is either spontaneous or planned rehabilitation of various ages or has significant disturbance. The remainder (84 ha) is high quality native vegetation.

2.2 PROPONENT DETAILS

TNG operates the Project. TNG’s details are summarised in Table 2-1.

Table 2-1: Proponent Details

Company	TNG Limited
Contact	Paul Burton Managing Director
Street address	Suite 20, 22 Railway Road, Subiaco, WA 6008
Postal address	PO Box 1126, Subiaco, WA 6904
Phone	+61 8 9327 0900
Fax	+61 8 9327 0901
Email	peb@tngltd.com.au
ABN	12 000 817 023
ASX code	TNG
Web	www.tngltd.com.au

2.3 EMERGENCY CONTACTS

The Project is located on the outskirts of Darwin, at Lot 1817, Hundred of Ayers, Middle Arm Industrial Precinct. The entirety of the site has mobile phone reception, however 2-way radios will also be used at the Processing Facility. A summary of emergency contacts is provided in Table 2-2.

Table 2-2: Emergency Contacts

Contact	Number	Assistance
Internal		
Construction Manager		Emergency Field Team Member
Operations Manager		Emergency Field Team Member
Environmental Manager		Emergency Field Team Member
H&S Manager		Emergency Field Team Member
On-site Medic		Emergency Field Team Member
Front Desk/Reception		Emergency Field Team Member
External		
Fire / Police / Ambulance	000	Priority response to emergencies
NT Police Force	13 14 44	Non-emergency line
NT Fire and Rescue	(08) 8999 3473	Non-emergency line
NT Emergency Services	13 25 00	Flood, storm or cyclone hotline
Palmerston Medical Clinic	(08) 8932 5100	Nearby medical centre, closes 9pm
Palmerston Police Station	(08) 8947 7200	Nearby priority response (alternative)
St John Ambulance Casuarina	(08) 8922 6200	Medical service
Australian Maritime Safety Authority	1800 641 792	Maritime emergencies
Marine Safety Branch – NT Department of Infrastructure, Planning and Logistics	(08) 8924 7100	Maritime emergencies
Regional Harbourmaster - NT Department of Infrastructure, Planning and Logistics	(08) 8999 3867	Maritime emergencies
Department of Environment and Natural Resources	1800 064 567	Pollution emergencies
Public Health Unit (PHU) – Disease Control; Ground Floor, Building 4; Royal Darwin Hospital; Rocklands Drive Tiwi NT 0810	(08) 8922 8044, or 1800 008 002	Information on biting insect borne diseases
Northern Territory Medical Entomology Branch, Department of Health and Community Services, PO Box 41326, Casuarina, NT 0811	(08) 8922 8901 or MedicalEntomologyRDH.THS@nt.gov.au	Information on mosquitoes and virus ecology.

2.4 MUSTER POINTS

During emergencies and emergency training exercises, the personnel from a department, specific work area or accommodation area will be required to evacuate to a place of safety; effectively, a muster point. Designated areas have been established across the site based on being the least hazardous in the event of an identified emergency.

In an evacuation, all personnel will cease work immediately and leave all equipment in a safe condition before walking calmly and quickly toward the nearest muster point, upwind of the incident if possible.

2.5 EMERGENCY MANAGEMENT TEAM STRUCTURE AND RESPONSIBILITY

An Emergency Management Team (**EMT**) is established to effectively manage emergencies. The EMT roles and responsibilities are summarised in Table 2-3.

Table 2-3: Emergency Management Team Responsibilities

EMT Position	Responsibilities	Primary	Secondary
Emergency Response Coordinator	The Emergency Response Coordinator (ERC) is responsible for the implementation of the ERP and EMT. The ERC will: <ul style="list-style-type: none"> Ensure sufficiently trained resources are available onsite to deal with emergency situations; Review and approve modifications to the ERP annually and/or after an emergency situation; and Undertake and/or authorise reporting to statutory bodies (i.e. Northern Territory Environment Protection Authority and NT WorkSafe) relating to incidents within statutory timeframes. 	Site Manager	Deputy Site Manger
Emergency Operations Officer	The Emergency Operations Officer (EOO) responsibilities include: <ul style="list-style-type: none"> Monitor site radio communications for emergency situations; Monitor weather forecast for cyclone, flood and fire risk; Communicating with Emergency Services; Implement the ERP and capture all information relating to the situation; Provide the 'All Clear' over UHF and to Muster Points; Undertake and/or manage investigations into emergency situations or remedial works; Provide summary of incidents, actions and responses to the ERC; Produce a 'Safety Moment' to onsite personnel within 1 week of incident occurring; Provide tool-box talks summarising emergency responses and detail any historical and/or industry specific incidents which have occurred and management measures used; and Annually revise the ERP based on historical and/or industry specific incidents to inform future management of emergencies. 	HSE Manager	Deputy HSE Manger
All Site Personnel	All site personnel including employees, subcontractors and visitors are responsible for: <ul style="list-style-type: none"> If trained and competent, rendering First Aid to any injured personnel; Complying with Site Induction requirements and Emergency Management Team instructions; Ceasing activities and leaving work areas in a safe condition as required; and Reporting to local Muster Points and returning to work when the 'all clear' instruction is provided. 	All site personnel	-
Emergency Services Personnel	Emergencies at the Darwin Processing Facility will use NT Police, NT Fire and Rescue, and NT Emergency Services in response.		

3 EMERGENCY RESPONSE EQUIPMENT

3.1 FIRST AID EQUIPMENT

All buildings/ work areas will be equipped with at least one first aid kit. Crib rooms, large offices, and other accessible and frequently used areas will also have an Automatic External Defibrillator (AED).

All vehicles will carry first aid kits and UHF radios.

Emergency response equipment will be inspected, maintained and tested by the EOO in accordance with manufacturer specifications.

3.2 FIRE RESPONSE EQUIPMENT

All vehicles will be fitted with a Fire Extinguisher. All buildings will have a clearly signposted Fire Extinguisher (both a AB(E) type, and any additional suitable types).

There will be at least one general-purpose fire trailer, to be used by trained personnel, in the event of a small fire. Fire response equipment throughout the Process Plant will be appropriate for a Major Hazard Facility and will account for all types of hazardous materials used and stored on site.

4 EMERGENCY PROCEDURES

4.1 ALARM

A manually activated alarm will be installed at the Processing Facility to enact an emergency response. In the event of an incident in another location, notification will be conveyed over the UHF radio and teams will be directed toward Muster Points.

4.2 ALL CLEAR

The EOO is responsible for closing out incidents and providing the 'All Clear' radio call to all site personnel and Muster Points affected. All works which were being undertaken through a permit system (e.g. Hot Works) will require the initial permit to be closed out and a new permit commenced.

4.3 RE-ENTRY

Once the all clear signal has been given, personnel may return to their work areas. A debrief will be held following the incident in most situations.

4.4 DEBRIEF

The EOO will schedule and undertake a debrief meeting following the incident. The meeting will include the ERC, any personnel directly involved, and an Emergency Services Representative (if available) and site personnel directly involved with the incident. The debrief meeting will be undertaken to:

- Establish the cause of the incident;
- Assess response times and effectiveness;
- Undertake a step-by-step assessment of individuals actions and appropriateness; and
- Identify additional management measures and/or responses for future incidents.

The EOO is to update the ERP and provide briefing to all site personnel.

5 EDUCATION AND TRAINING

5.1 SITE INDUCTION

All site personnel will be inducted to the Project during construction and operation phases. The site induction will include:

- Summary of potential emergency situations;
- Site personnel requirements;
- Locations of emergency equipment; and
- Detail of Muster Points.

5.2 SAFETY MOMENTS

Following an incident at the Project (including near misses) a Safety Moment will be produced by the EOO. The Safety Moment will include a picture of the incident (where relevant), summary of events leading up to the incident, root cause and future management measures or recommendations.

5.3 TOOLBOX TALKS

The EOO will provide monthly toolbox talks to each construction or operational area. The toolbox talks will summarise emergency responses and detail any historical and / or industry specific incidents which have occurred and management measures used.

6 STATUTORY NOTIFICATION PROCEDURES

Incidents that trigger the ERP will be captured, assessed and reviewed. In addition, regulatory reporting requirements for incidents and triggers are provided in Table 6-1. All external communication of incidents will be signed and approved by the ERC.

Table 6-1: Regulatory Body Reporting Requirements

Entity	Trigger	Timeframe and Contact Details	Incident Reporting Details
Northern Territory Environment Protection Authority	Incident which causes, or threatens to cause, pollution resulting in material or serious environmental harm.	< 24 h post incident 1800 064 567 ntepa@nt.gov.au pollution@nt.gov.au	The Section 14 Incident Report Form requires the following details: <ul style="list-style-type: none"> Incident causing or threatening to cause pollution Location occurred and area impacted; Date and time How the pollution has occurred, is occurring or may occur Attempts made to prevent, reduce, control, rectify, investigation and/or clean up the pollution or resultant environmental harm caused or threatening to be caused by the incident Operator details. The form is to be signed by the ERC for submission. A blank form is provided in Appendix A.
Department of Infrastructure, Planning and Logistics / Australian Maritime Safety Authority	Occurrence of marine pollution, including: <ul style="list-style-type: none"> Fuel, sludge or oil refuse, spills or leaks; noxious liquid or substances including chemicals, paint and fertiliser harmful substances in packaging, including rubbish. 	As soon as practicable reports@amsa.gov.au pollution@nt.gov.au	One of three forms that may be required: <ul style="list-style-type: none"> Harmful Substances Report – Oil (Appendix B) Harmful Substances Report – Noxious Liquid Substances (Appendix C) Harmful Substances Report – Packaged Harmful Substances (Appendix D) These forms require information such as: <ul style="list-style-type: none"> Name/type of vessel Date, time, location Movements of vessel Details of cargo Details of pollutants Weather and sea conditions
NT WorkSafe	Incident which results in either: <ul style="list-style-type: none"> Death of a person; Serious injury or illness; or 	Immediate verbal communication via 1800 019 115 Written notification < 48 h post incident.	The NT WorkSafe Incident Notification Form requires the following details: <ul style="list-style-type: none"> Person submitting details; Incident details including date, time and human injury details; Work activity being undertaken at the time of incident;

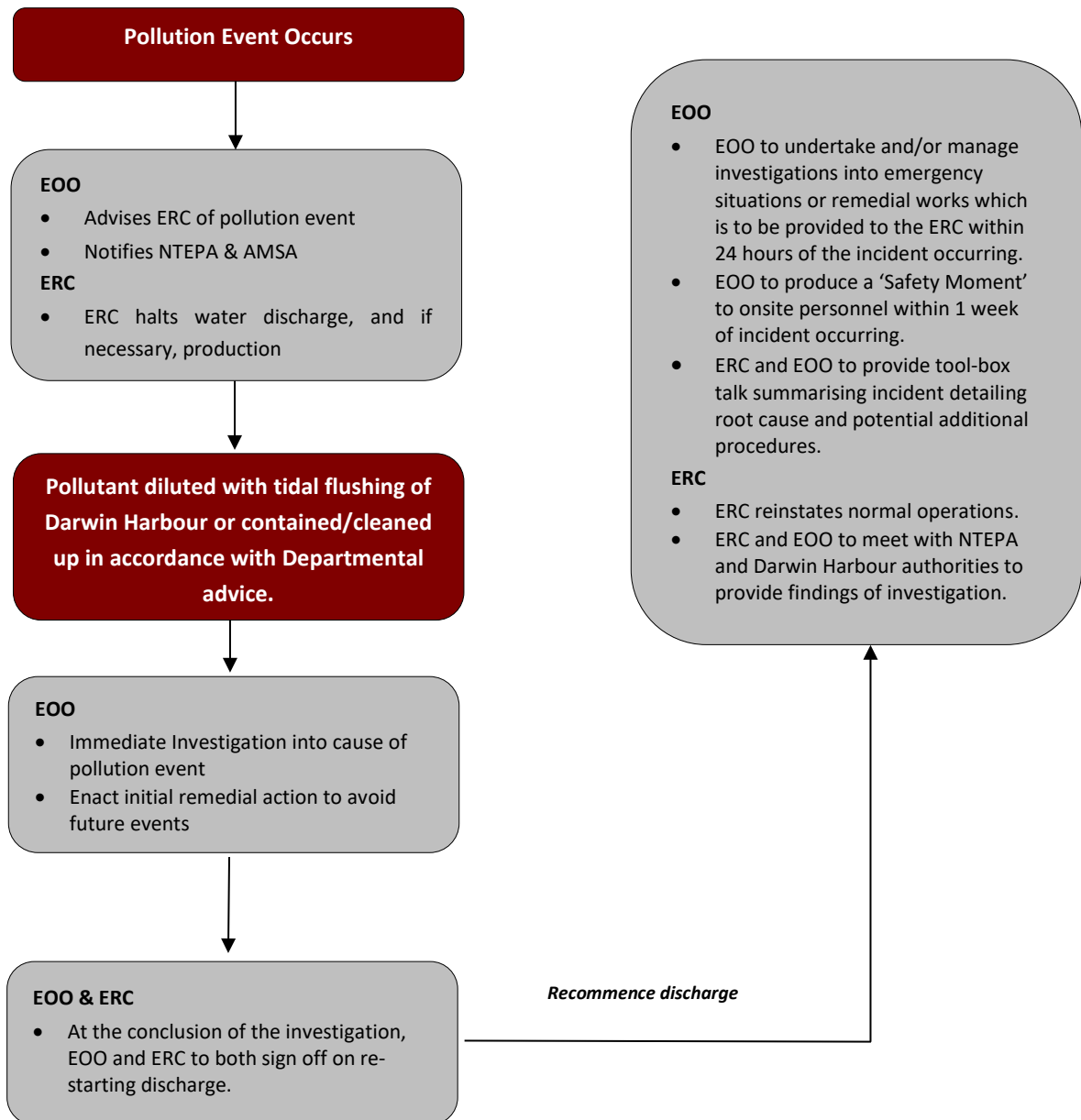
Entity	Trigger	Timeframe and Contact Details	Incident Reporting Details
	<ul style="list-style-type: none"> Dangerous incident. 	ntworksafe@nt.gov.au	<ul style="list-style-type: none"> Witness(es) details; Details of injured / deceased persons; Summary of injury or illness; and Future remedial actions. <p>The form is to be signed by the ERC for submission. A blank form is provided in Appendix E.</p>
Department of the Environment and Energy	Impact (injury or death) involving matters of national environmental significance.	As soon as practicable. 02 6274 1372 compliance@environm.ent.gov.au	No standard notification form is available. However, the following should be provided within the initial notification: <ul style="list-style-type: none"> Summary of incident; Location occurred and area impacted; Date and time Cause of incident; Attempts made to prevent, reduce, control, rectify and investigate the cause of the incident Operator details.
Heritage Branch	Exposure and / or interference with unidentified natural, cultural or indigenous heritage.	As soon as practicable. Tel: 08 8951 9247 heritage@nt.gov.au	No standard notification form is available. However, the following should be provided within the initial notification: <ul style="list-style-type: none"> Type of natural, cultural or indigenous heritage Location of the site (grid reference) Type and method of interference (exposed and/or damaged) Name and organisation of discoverer Photograph of site.
Aboriginal Areas Protection Authority (AAPA)	Entrance and / or damage of sacred site or restricted works area.	As soon as practicable. Tel: 08 8999 5511 enquiries.aapa@nt.gov.au	No standard notification form is available. However, the following should be provided within the initial notification: <ul style="list-style-type: none"> Location of the site (grid reference) AAPA certificate pertaining to the site Summary of damage Name and organisation of discoverer; Type and method of interference (exposed and/or damaged) Photograph of damage.

7 EMERGENCY RESPONSE ACTIONS

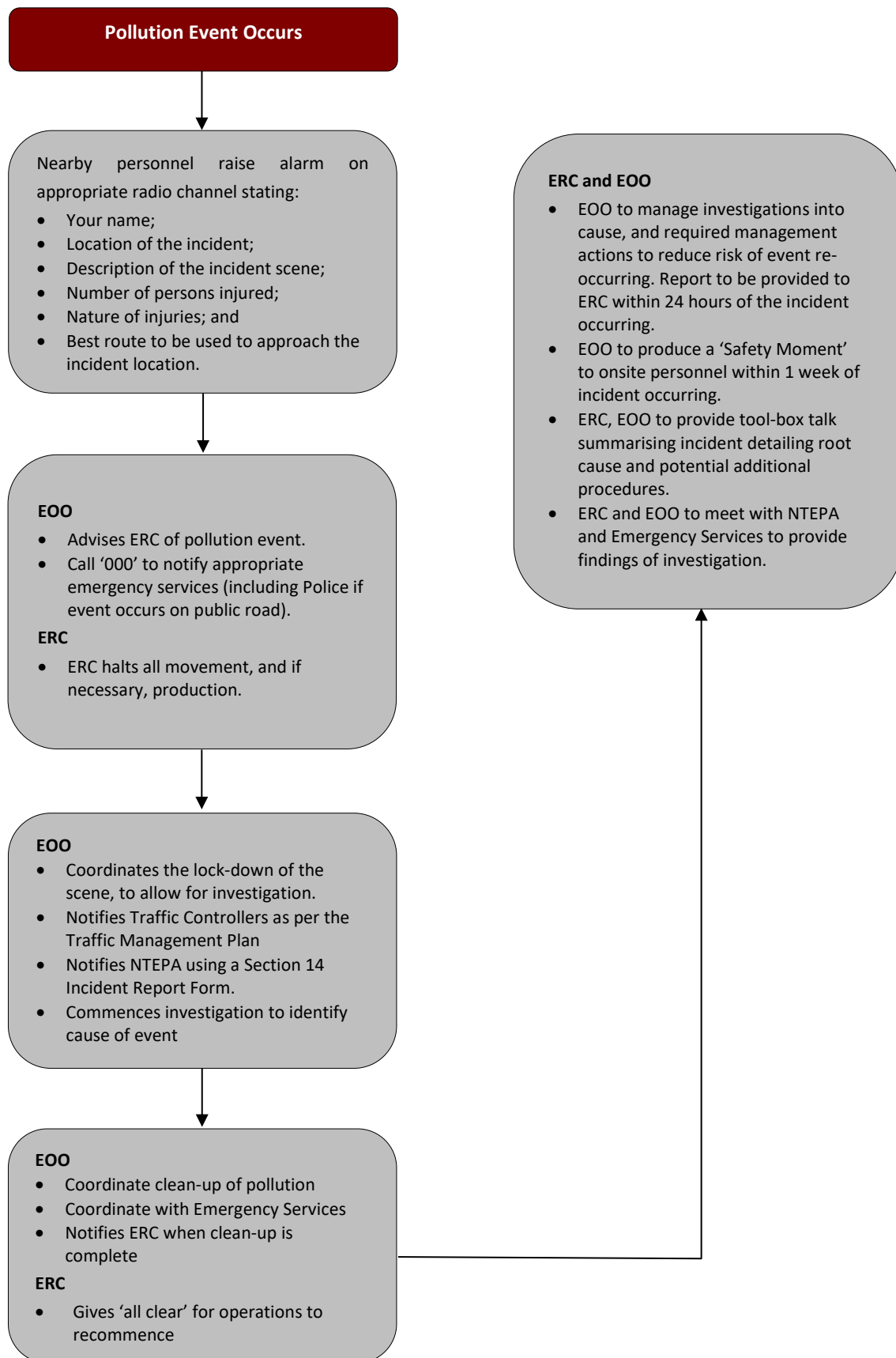
Emergency response actions have been predetermined to facilitate the management of incidents at the Project. Incidents may include one or more response plans and they should be used in unison as required. Fire is not discussed here, as it is covered in detail in the Fire Management Plan. Emergency response actions cover by this document are:

- Significant discharge of pollutants into marine environment
- Release of hazardous materials due to vehicle or rail accident
- Significant release of hazardous material or gas explosion within Project Area
- Biting insects/transmissible disease outbreak
- Disturbance of Sacred Site

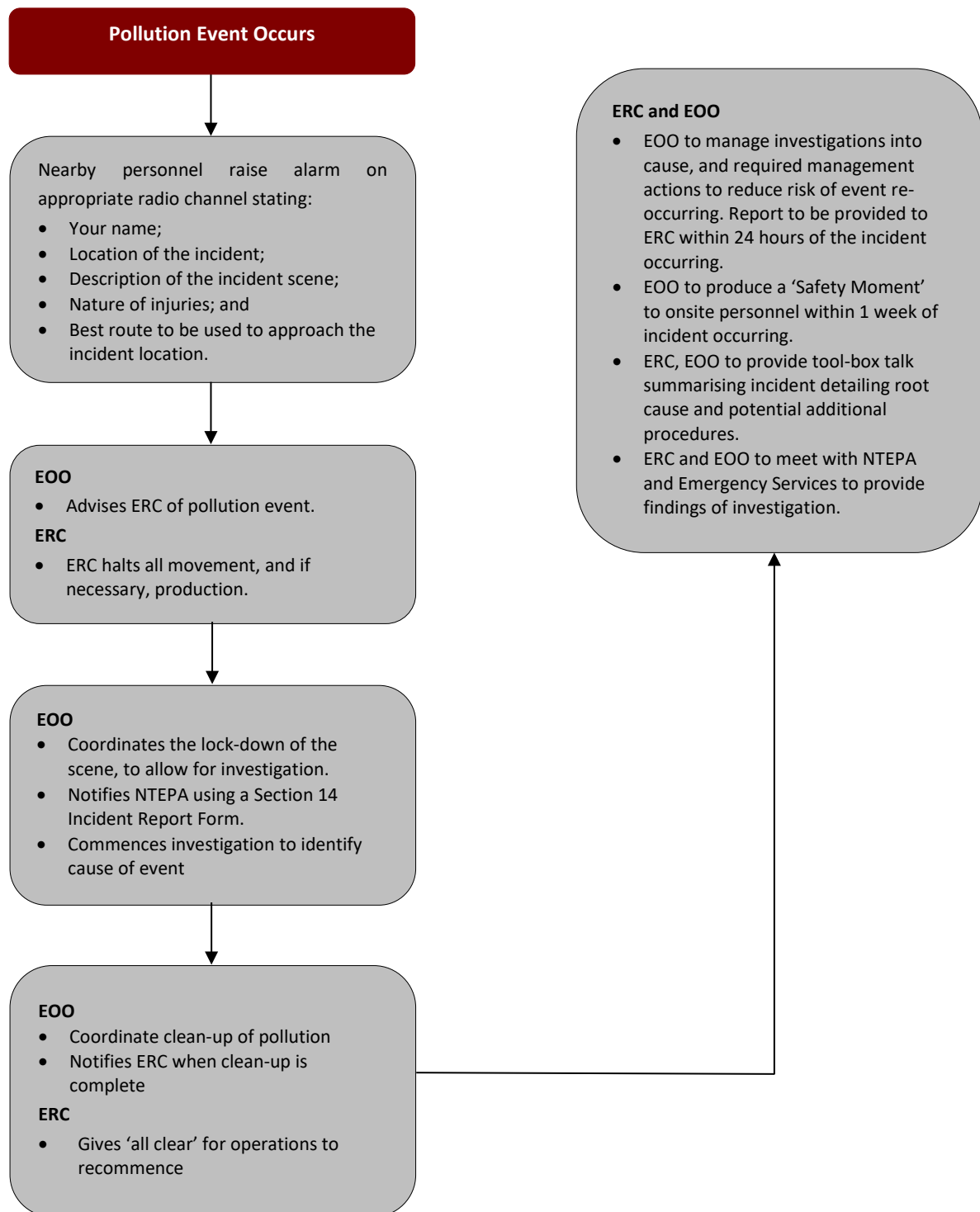
7.1 SIGNIFICANT DISCHARGE OF POLLUTANTS INTO MARINE ENVIRONMENT



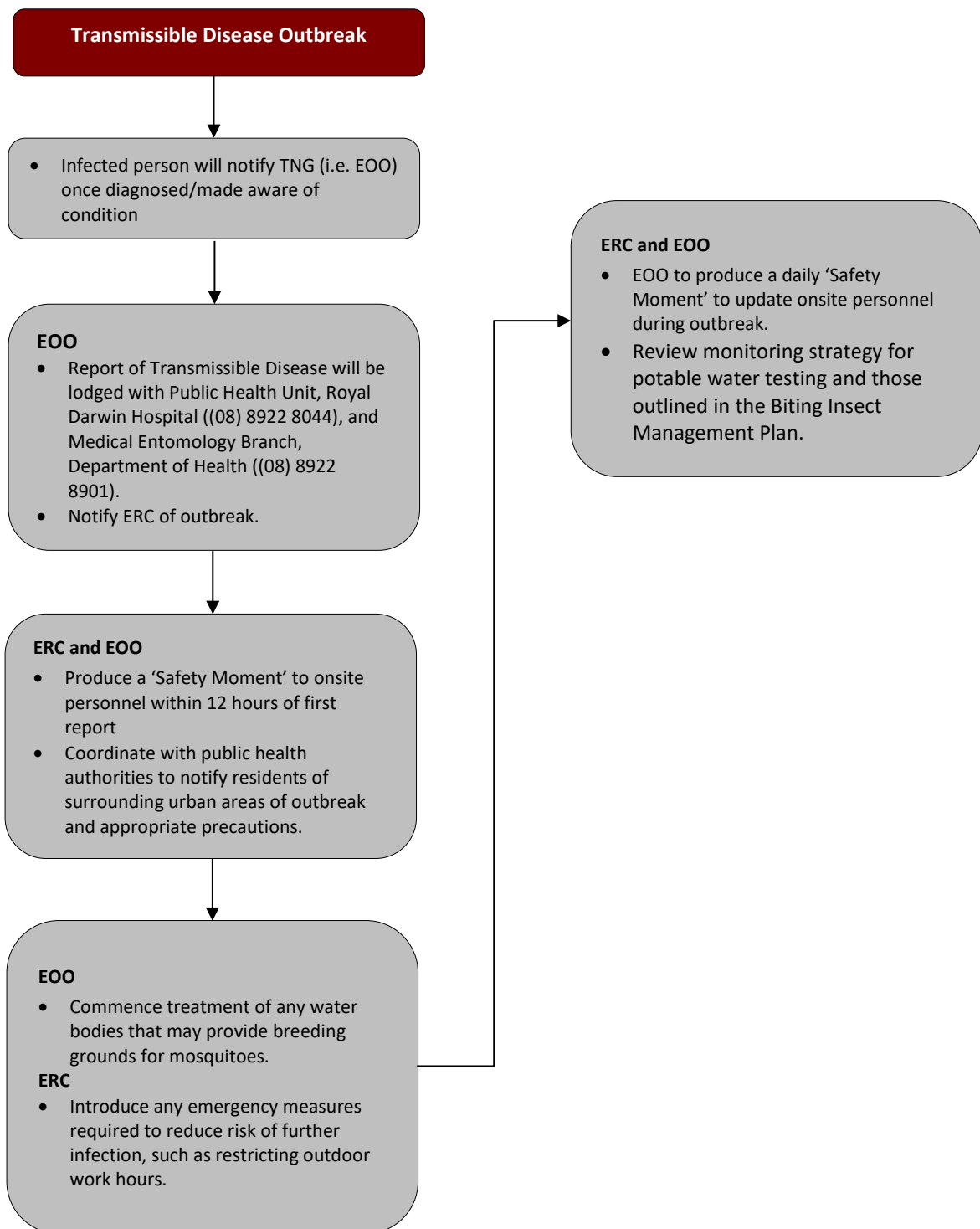
7.2 SIGNIFICANT RELEASE OF HAZARDOUS MATERIALS DUE TO VEHICLE OR RAIL ACCIDENT



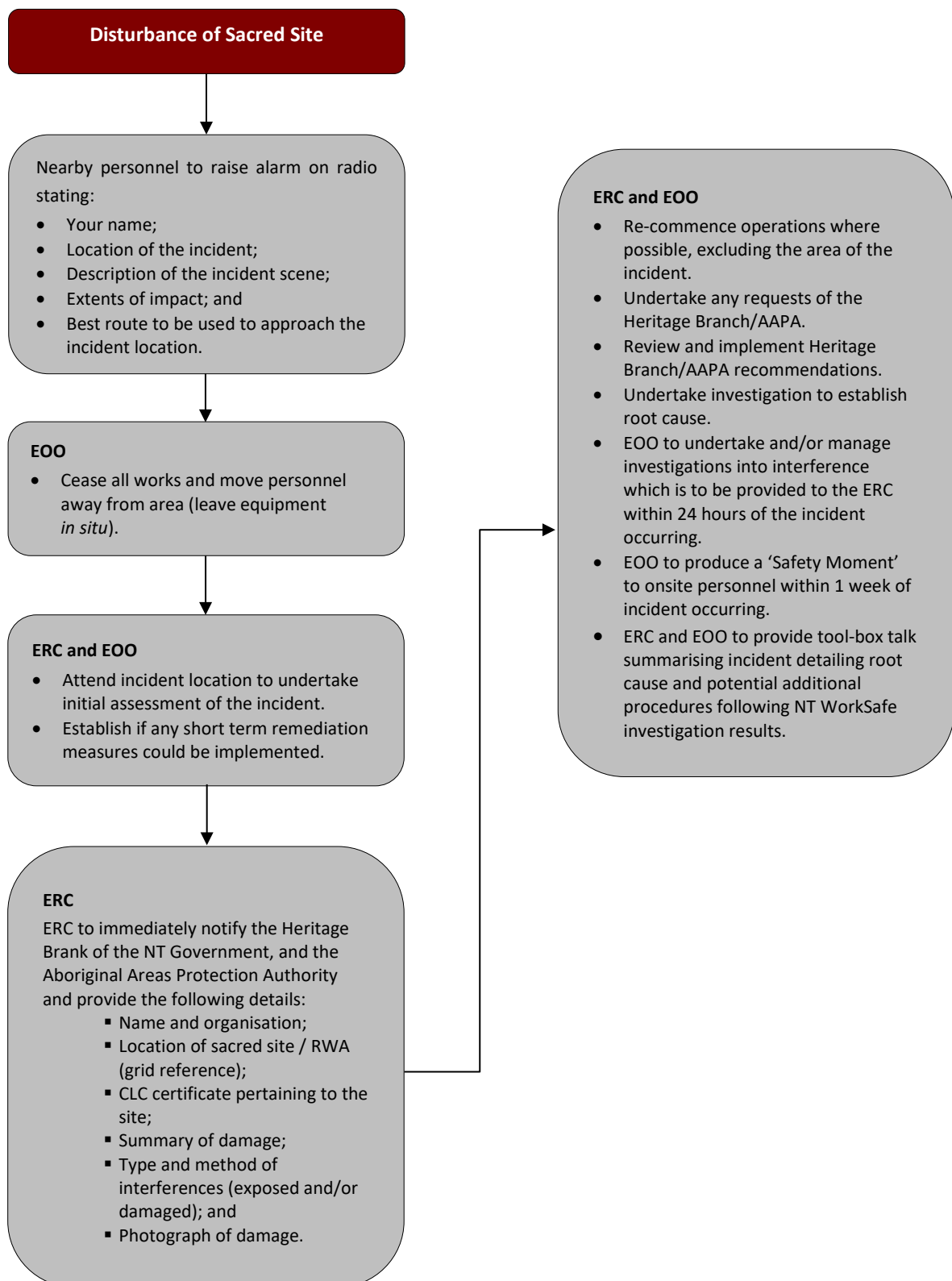
7.3 SIGNIFICANT RELEASE OF HAZARDOUS MATERIAL OR GAS EXPLOSION WITHIN PROJECT AREA



7.4 TRANSMISSIBLE/MOSQUITO-BORNE DISEASE OUTBREAK



7.5 DISTURBANCE OF SACRED SITE



8 PREVIOUS PERIOD PERFORMANCE AND REVIEW

This ERP should be reviewed annually at a minimum. The ERP should also be reviewed following significant incidents and updated where appropriate.

9 APPENDICES

Appendix A: NTEPA Section 29 Notification of Environmental Incident Form

SECTION 14 INCIDENT REPORT (*Waste Management and Pollution Control Act*)

Date and Time of Notification:	
Person / Company:	
Incident:	

(a) the incident causing or threatening to cause pollution	
(b) the place where the incident occurred	
(c) the date and time of the incident	
(d) how the pollution has occurred, is occurring or may occur	
(e) the attempts made to prevent, reduce, control, rectify or clean up the pollution or resultant environmental harm caused or threatening to be caused by the incident	
(f) the identity of the person notifying the NT EPA	

Appendix B: NTEPA Harmful Substances Report – Oil

HARMFUL SUBSTANCES REPORT - OIL (POLREP)

Marine Pollution Act, regulation 37(4)

To: General Manager, Marine Environment Division through
Australian Search and Rescue Centre, Canberra

Telex: 7162349

Telephone: +61 (0)2 6230 6811

Freecall: 1800 641 792 (within Australia)

Facsimile: +61 (0)2 6230 6868

AFTN: YSARYCYX

E-mail: rccaus@amsa.gov.au
pollution@nt.gov.au

(Note: If any of the following items of the vessel reporting format are inappropriate they should be omitted from the report.)

A. Name of vessel Call sign Flag

B. Date and time of event *(Note: Time must be expressed as Coordinated Universal Time (UTC))*

C. Position: latitude and longitude
or

D. Position: true bearing and distance

E. True course (as a three digit group)

F. Speed (in knots and tenths of a knot as a 3-digit group)

L. Route information – details of intended track

M. Full details of radio stations and frequencies being guarded

N. Time of next report *(Note: Time must be expressed as Coordinated Universal Time (UTC))*

P. Type and quantities of cargo and bunkers on board

Q. Brief details of defects, damage, deficiencies or other limitations.
These must include the condition of the vessel and the ability to transfer cargo, ballast or fuel

Appendix C: NTEPA Harmful Substances Report – Noxious Liquid Substances

HARMFUL SUBSTANCES REPORT - NOXIOUS LIQUID SUBSTANCES (POLREP)

Marine Pollution Act, regulation 37(4)

To: General Manager, Marine Environment Division
through Australian Search and Rescue Centre, Canberra

Telex: 7162349
Telephone: +61 (0)2 6230 6811
Freecall: 1800 641 792 (within Australia)
Facsimile: +61 (0)2 6230 6868
AFTN: YSARYCYX
E-mail: rccaus@amsa.gov.au
pollution@nt.gov.au

(Note: If any of the following items of the ship reporting format are inappropriate they should be omitted from the report.)

A. Name of vessel Call sign Flag

B. Date and time of event (*Note: Time must be expressed as Coordinated Universal Time (UTC)*)

C. Position: latitude and longitude
or

D. Position: true bearing and distance

E. True course (as a three digit group)

F. Speed (in knots and tenths of a knot as a 3-digit group)

L. Route information – details of intended track

M. Full details of radio stations and frequencies being guarded

N. Time of next report (*Note: Time must be expressed as Coordinated Universal Time (UTC)*)

P. Type of oil or the correct technical name for the noxious liquid substances on board	UN number or numbers, if available
Pollution category (X,Y or Z) for each noxious liquid substance	
Names of manufacturers of substances or consignee or consignor	An estimate of the quantity of the substances

Q. Brief details of defects, damage, deficiencies or other limitations.

These must include the condition of the ship and the ability to transfer cargo, ballast or fuel

--

R.

Type of oil or the correct technical name for the noxious liquid substance discharged into the sea		UN number or numbers if available
Pollution category (X,Y or Z) for each noxious liquid substance		
Names of manufacturers of substances or consignee or consignor		
An estimate of the quantity of the substances	Whether the substances floated or sank	Whether loss is continuing
Cause of loss		
Estimate of the movement of the discharge or lost substances giving current conditions, if known		
Estimate of the surface area of the spill		

S. Weather and sea conditions, including wind force and direction and relevant tidal or current details

--

T. Name, address, telephone and facsimile numbers of the vessel's owner and representative (*manager or operator of the vessel, or their agents*)

Owner		Representative	
Telephone	Facsimile	Telephone	Facsimile

U. Type of vessel

--

Length

--

Breadth

--

Tonnage

--

X. 1. Action being taken with regard to the discharge and to the movement of the vessel

--

2. Assistance or salvage efforts which have been requested or which have been provided by others

--

3. The master of an assisting or salvaging vessel should report the particulars of the action undertaken or planned

--

Appendix D: NTEPA Harmful Substances Report – Packaged Harmful Substances

HARMFUL SUBSTANCES REPORT - PACKAGED HARMFUL SUBSTANCES (POLREP)

Marine Pollution Act, regulation 37(4)

To: General Manager, Marine Environment Division
through Australian Search and Rescue Centre, Canberra

Telex: 7162349

Telephone: +61 (0)2 6230 6811

Freecall: 1800 641 792 (within Australia)

Facsimile: +61 (0)2 6230 6868

AFTN: YSARYCYX

E-mail: rccaus@amsa.gov.au

pollution@nt.gov.au

(Note: If any of the following items of the ship reporting format are inappropriate they should be omitted from the report.)

A. Name of vessel Call sign Flag

B. Date and time of event *(Note: Time must be expressed as Coordinated Universal Time (UTC))*

C. Position: latitude and longitude
or

D. Position: true bearing and distance

M. Full details of radio stations and frequencies being guarded

N. Time of next report *(Note: Time must be expressed as Coordinated Universal Time (UTC))*

P. Probable discharge

Correct technical name or names of goods	UN number or numbers, if available
IMO Hazard class or classes	
Names of manufacturers of substances or consignee or consignor	An estimate of the quantity of the substances
Types of packages, including identification marks (Specify whether portable tank, freight container or other cargo transport container, including registration marks and numbers assigned to the unit.	

Q. Brief details of defects, damage, deficiencies or other limitations.

These must include the condition of the ship and the ability to transfer cargo, ballast or fuel

--

R.

Correct technical name or names of goods		UN number or numbers if available	
IMO hazard class or classes			
Names of manufacturers of substances or consignee or consignor			
An estimate of the quantity and likely condition of the goods			
Whether the lost goods floated or sank		Whether loss is continuing	
Cause of loss			
Estimate of the movement of the discharge or lost substances giving current conditions, if known			

S.

Weather and sea conditions, including wind force and direction and relevant tidal or current details

--

T.

Name, address, telephone and facsimile numbers of the vessel's owner and representative (*manager or operator of the vessel, or their agents*)

Owner		Representative	
Telephone	Facsimile	Telephone	Facsimile

U.

Type of vessel

--

Length

--

Breadth

--

Tonnage

--

X.

1. Action being taken with regard to the discharge and to the movement of the vessel

--

2. Assistance or salvage efforts which have been requested or which have been provided by others

--

3. The master of an assisting or salvaging vessel should report the particulars of the action undertaken or planned

--

Appendix E: NT WorkSafe Sections 35 to 39 Incident Notification Form

Incident notification form

Sections 35 to 39 of the *Work Health and Safety (National Uniform Legislation) Act* (WHS (NUL) Act) states NT WorkSafe must be notified of the occurrence as soon as practicable by the PCBU on **1800 019 115**. You will be given an incident notification Reference Number that must be included on this form. This number is proof of your notification phone call as soon as was practicable.

In addition to immediate (as soon as is practicable) phone notification, this 2-page notification form must be faxed or emailed to NT WorkSafe within **48 hours** after the incident occurrence. Fax: **08 8999 5141**. Email: ntworksafe@nt.gov.au

For more information please see NT WorkSafe bulletin Incident Notifications.

Reference Number:		Date:	
--------------------------	--	--------------	--

Person submitting details (if completing form by hand, please print **BLOCK** letters)

Name:			
Position title:			
Name of employer/self-employed person notifying:			
ABN:			
Business address: (Not Postal Address)			
Suburb:	State:	Postcode:	
Work number:	Mobile number:		
Email address:			

Incident details

Date of incident:		Time of incident: (am/pm)	
Death of a person	<input type="checkbox"/>	Serious injury or illness	<input type="checkbox"/>
		Dangerous incident	<input type="checkbox"/>
Name of employer of any Injured or deceased person(s) if different from above: i.e.: subcontractor			
ABN:			
Address or location where the incident occurred:			
Describe the specific location of the incident:			

Work activity being undertaken at the time of the incident:

Provide a description of work being undertaken at the time of the incident including identifying any plant, substance and equipment involved

Witnesses

Name of person(s) who saw the incident or was first on the scene

--

Details of injured/deceased person(s)

Full name:			
Date of birth:		Occupation/Job title:	
Direct worker <input type="checkbox"/>	Contractor <input type="checkbox"/>	Member of public <input type="checkbox"/>	Other <input type="checkbox"/>
Address:			
Suburb:		State:	Postcode:
Work number:		Mobile number:	
Email address:			

Injury/Illness

Provide a description of any injury or illness

--

Did the person receive treatment following the injury/illness? If yes, describe treatment below Yes No

--

Action

Describe any Action taken/intended, if any, to prevent recurrence of the incident

--

Declaration of notifier

Date form submitted:		Signed:		I have submitted this form electronically (signature is not required)	<input type="checkbox"/>
----------------------	--	---------	--	---	--------------------------