



## Container Deposit Scheme

# Container Deposit Scheme Quarterly Report

1 October to 31 December 2013

**TABLE OF CONTENTS**

|          |  |          |
|----------|--|----------|
| <b>1</b> | <b>Introduction .....</b>  | <b>1</b> |
| <b>2</b> | <b>Key Definitions.....</b>  | <b>1</b> |
| <b>3</b> | <b>Sales Data and Return Rates.....</b>  | <b>2</b> |
|          | Table 1: Number of Containers Redeemed by Material Type at Collection Depots ..... | 2        |
|          | Figure 1: Beverage Container Sales and Returns by Material Type .....              | 2        |
|          | Figure 2: Container Return Rate by Quarter .....                                   | 3        |
| <b>4</b> | <b>Containers Redeemed at Collection Depots.....</b>                               | <b>3</b> |
|          | Table 2: Number of Containers Redeemed by Material Type at Collection Depots ..... | 3        |
|          | Figure 3: Number of Containers Redeemed at Collection Depots by Quarter in 2013.   | 4        |
|          | Figure 4: Collection Depot Redemptions by Material Type.....                       | 4        |
|          | 4.1 Redemptions by Region.....   | 5        |
|          | Figure 5: Collection Depot Redemptions by Region .....                             | 5        |

## 1 Introduction

The Northern Territory Container Deposit Scheme (CDS) commenced on 3 January 2012. The aim of the program is to reduce beverage container litter and increase resource recovery across the Northern Territory.

Five CDS coordinators are approved to operate in the Northern Territory. They are; NT Coordinators, Envirobank NT, Statewide Recycling, NT Recycling Solutions and Marine Stores. Their role is to work with the collection depots and beverage manufactures to recycle, reuse or appropriately dispose of approved containers. Territorians can collect their 10 cents in return for each approved container at a collection depot.

During the October to December 2013 quarter new collection depots opened in Alice Springs and Tennant Creek. Existing depots continued to operate in Pinelands, Winnellie, Katherine and Elliot. Reverse Vending Machines were operating in Parap, Nightcliff, Milingimbi and at Charles Darwin University.

## 2 Key Definitions

*Containers returned:* the number of containers that have been aggregated and returned to Coordinators from Collection Depots.

*Return rates:* the total percentage of container numbers that have been returned to Coordinators in relation to the total number of containers sold in the Territory.

*Containers redeemed:* the number of approved containers that have been accepted by Collection Depots to give a 10 cent refund to the community.

*PET (polyethylene terephthalate):* the product plastic beverage containers are made from (for example, water bottles).

*HDPE (high-density polyethylene):* materials that some juice containers are made from.

*LPB (liquid paper board):* material utilised in the packaging of beverages such as popper juices. LPB also includes ASEPTIC which is the packaging of beverages in a sterile container, used for example in long life UHT beverages.

*Other containers:* steel, foil sachets and other plastics including biodegradable, photo-sensitive and plant-based plastics. Also includes resin types established since 1988 and those marked with the number 7.

### 3 Sales Data and Return Rates

During the October to December 2013 quarter, 40 136 803 approved containers were sold in the Northern Territory. 15 583 913 of those containers were returned to CDS coordinators. This equates to a return rate of 38.83% across all material types (see Table 1). That is, 38.83% of all containers sold in the Northern Territory were recycled or reused through the Container Deposit Scheme (CDS).

Table 1: Number of Containers Redeemed by Material Type at Collection Depots

| Container Material | Containers Sold   | Containers returned to CDS Coordinators | Container Return Rates (%) |
|--------------------|-------------------|---|----------------------------|
| Aluminium          | 16 046 859        | 8 210 043                               | 51.16                      |
| PET                | 10 781 093        | 3 159 335                               | 29.30                      |
| HDPE               | 809 943           | 119 915                                 | 14.81                      |
| Glass              | 9 725 935         | 3 639 150                               | 37.42                      |
| LPB                | 2 770 465         | 455 470                                 | 16.44                      |
| Other              | 2 508             |   |                            |
| <b>TOTAL</b>       | <b>40 136 803</b> | <b>15 583 913</b>                       | <b>38.83</b>               |

In this fourth quarter, 51.16% of aluminium containers sold in the Northern Territory were returned to CDS coordinators. This was followed by 37.42% of glass containers and 29.30% of PET containers (see Figure 1).

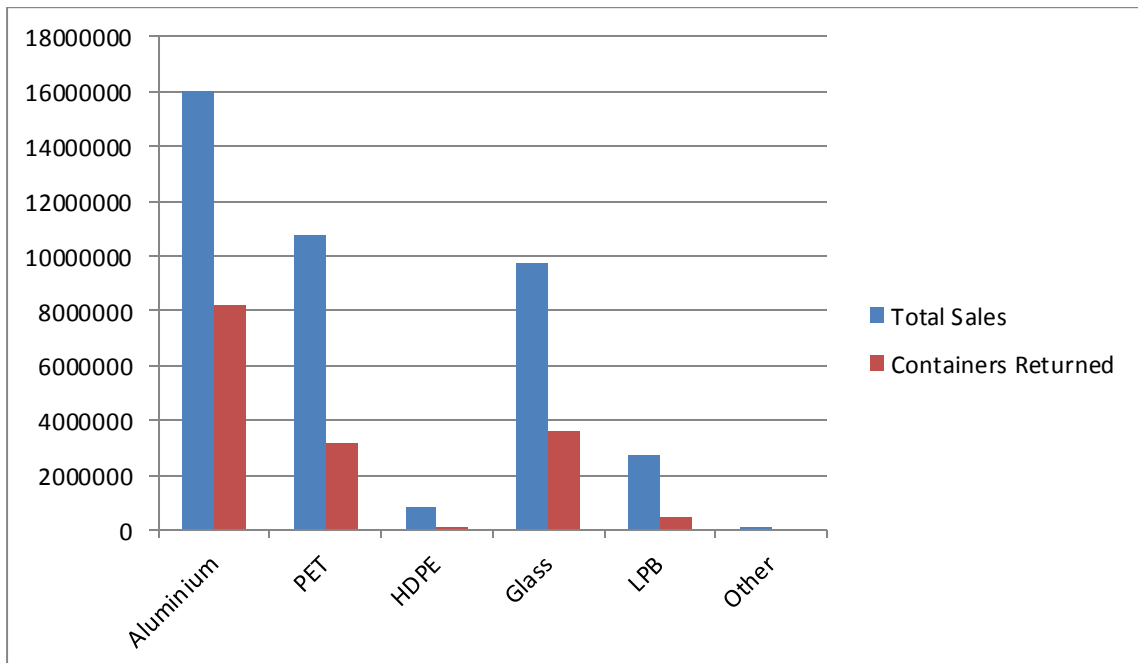


Figure 1: Beverage Container Sales and Returns by Material Type

As Figure 2 demonstrates the October to December 2013 quarter saw an increase of 3.18% in return rates on the previous quarter. An annual return rate of 45.04% was achieved in 2013.

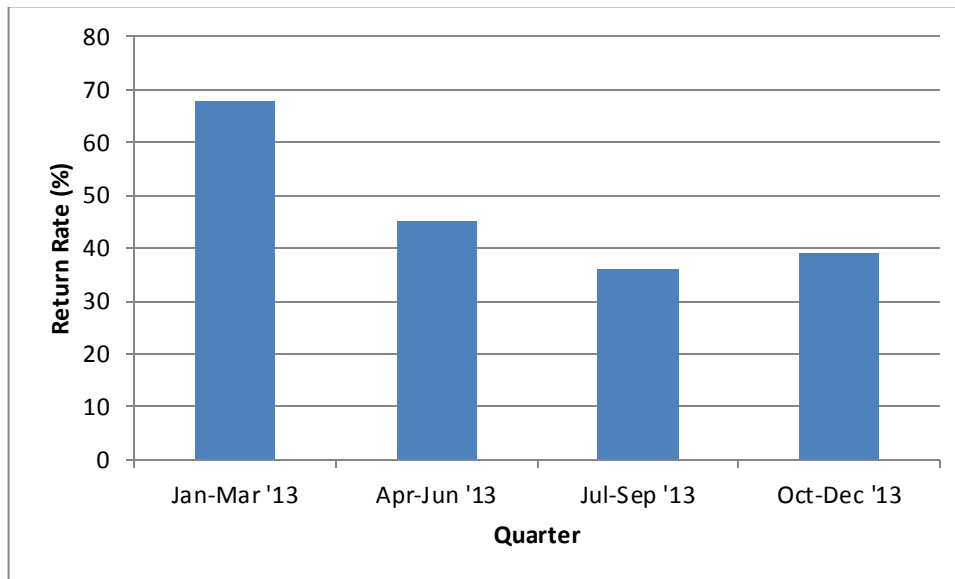


Figure 2: Container Return Rate by Quarter

## 4 Containers Redeemed at Collection Depots

A total of 16 792 479 containers were redeemed at Collection Depots over quarter four 2013 (see Table 2). The redemption of these containers equates to over \$1.6 million in deposits that have been paid out to families, schools, community organisations and commercial operators in the Northern Territory over the October to December 2013 period.

Table 2: Number of Containers Redeemed by Material Type at Collection Depots

| Container Material | Containers Redeemed at Collection Depots |
|--------------------|--|
| Aluminium          | 9 191 569                                |
| PET                | 3 248 329                                |
| HDPE               | 148 535                                  |
| Glass              | 3 430 880                                |
| LPB                | 773 014                                  |
| Other              | 152                                      |
| <b>TOTAL</b>       | <b>16 792 479</b>                        |

Figure 3 shows the number of containers redeemed at Collection Depots in each quarter throughout 2013. An additional 2.1 million containers on the previous quarter were redeemed at Collection Depots during the October to December 2013 quarter. This increase may be attributed to increased access to the CDS across the Territory during this quarter.

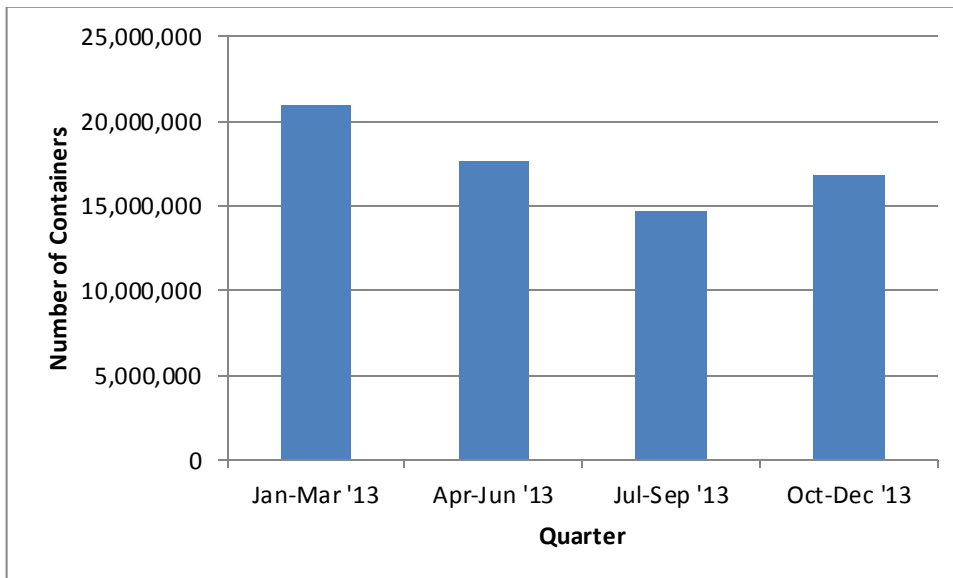


Figure 3: Number of Containers Redeemed at Collection Depots by Quarter in 2013.

Of the containers redeemed in this quarter, 55% of all containers redeemed were aluminium, 20% were glass and 19% were PET (see Figure 4).

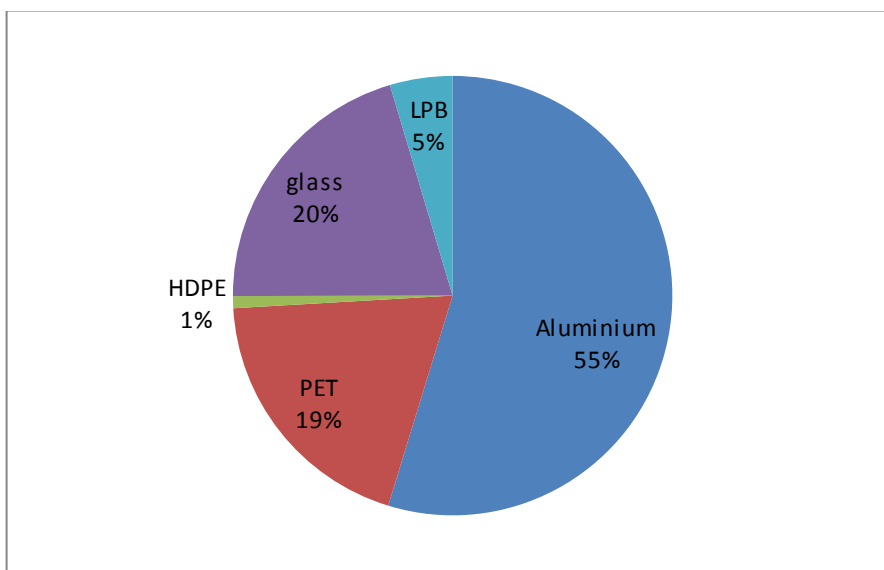


Figure 4: Collection Depot Redemptions by Material Type

## 4.1 Redemptions by Region

Collection Depots operating in the Greater Darwin Region include the depots located in Berrimah, Pinelands, Parap, Nightcliff and Charles Darwin University. Areas outside of Darwin (Other) include depots in Katherine, Alice Springs, Tennant Creek, Elliot, and Milingimbi:

- 13.2 million containers were redeemed in the greater Darwin region; and
- 3.5 million containers were redeemed in areas outside of Darwin (see Figure 5).

Figure 5 shows a comparison of the number of containers by material type collected in the greater Darwin region to the number outside of Darwin.

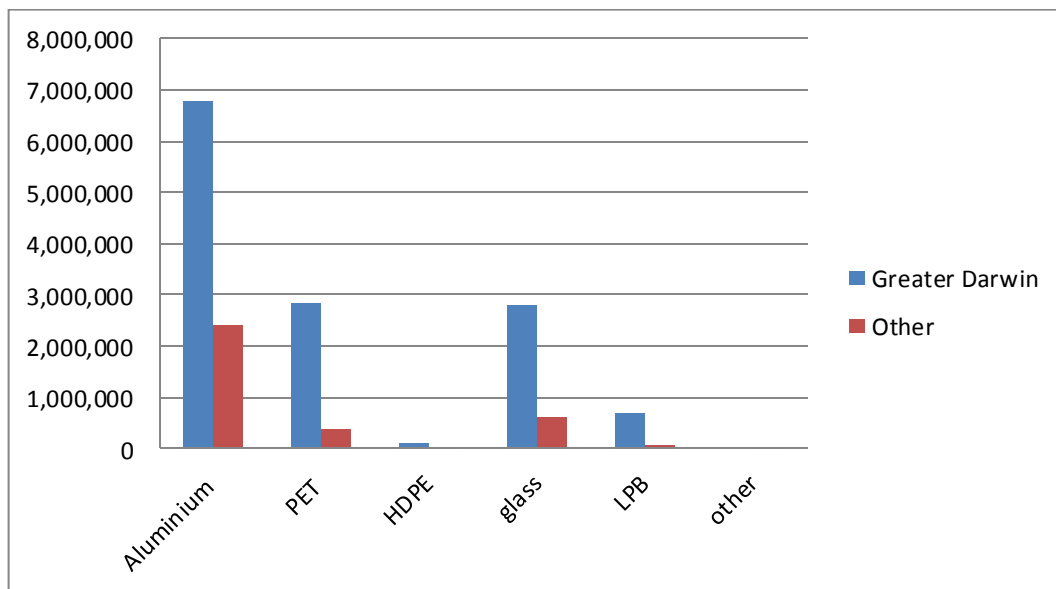


Figure 5: Collection Depot Redemptions by Region