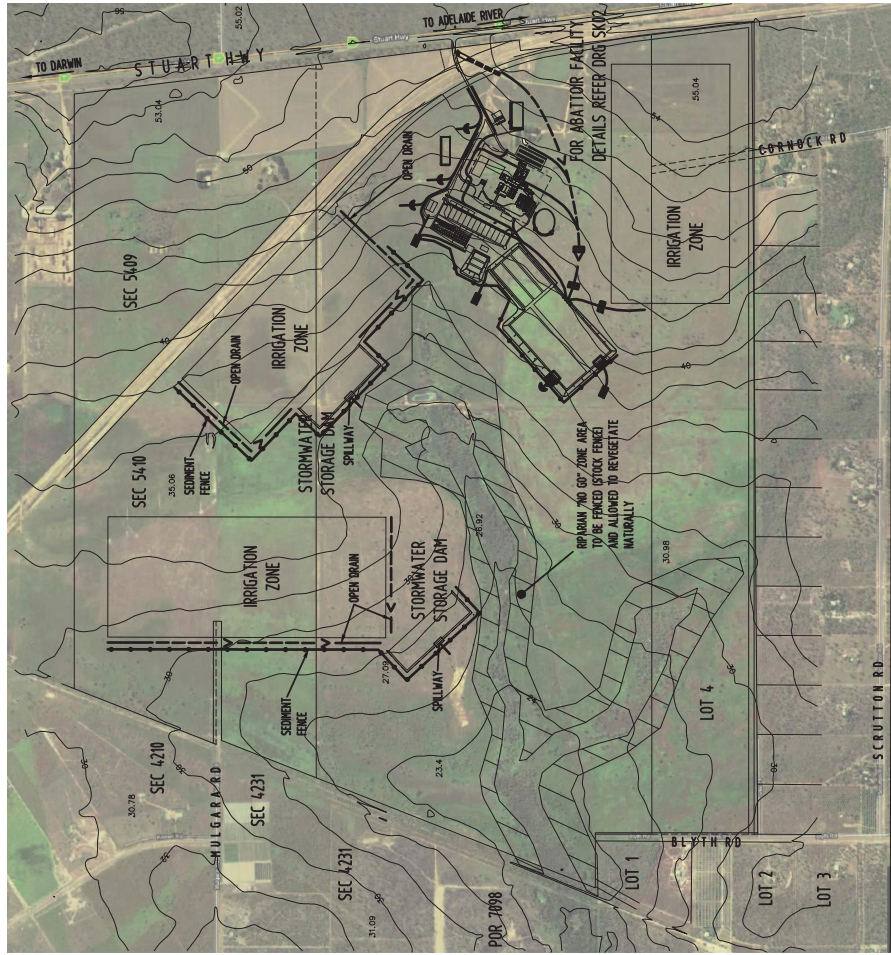


Annexure 4
Stormwater and Erosion and
Sedimentation Control Plan

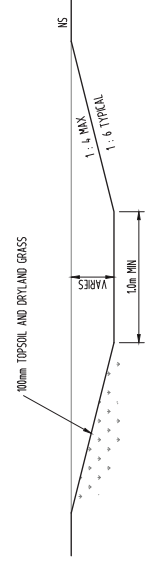


GENERAL NOTES

- TOPSOIL SHALL BE STRIPPED AND STOCKPILED FOR REUSE.
- SPREAD STRIPPED MATERIAL OR TOPSOIL 100mm MIN THICK ON ALL BATTERS AND DRAINS, AND GRASS WITH DRYLANDS GRASS.
- ALL OPEN DRAINS SHALL BE TRAPEZOIDAL IN SHAPE WITH 1 IN 4 MAX. BATTERS OR AS NOTED OTHERWISE.
- ALL CULVERT ENDWALLS SHALL HAVE OUTLET PROTECTION SUCH AS REED MATBESSES, DUMP ROCK OR GEOTEXTILE FABRIC OR GROUDED STONE PITCHING AS DOCUMENTED. PROVIDE GROUDED STONE PITCHING AROUND HEADWALLS.
- ALL INLETS TO LETTER BOX PITS SHALL HAVE GROUDED STONE PITCHING AS PER STD DRG (S200)

EROSION CONTROL

- THE CONTRACTOR SHALL BE RESPONSIBLE FOR THE CONTROL OF ALL TRAFFIC INTO AND OUT OF THE SITE INCLUDING THE MOVEMENT OF CONSTRUCTION TRAFFIC WITHIN THE SITE AND SHALL MAINTAIN DUST SUPPRESSION MEASURES TO THE SATISFACTION OF THE SUPERINTENDENT.
- BEFORE CLEANING COMMENCES AREAS OF VEGETATION NOMINATED FOR PROTECTION SHALL BE FLAGGED OR FENCED AND INSPECTED BY THE SUPERINTENDENT. CLEARING OF VEGETATION SHALL BE RESTRICTED TO THE NOMINATED AREAS.
- STRIPPED TOPSOIL SHALL BE STOCKPILED FOR REUSE AT LOCATIONS NOMINATED ON THE DRAWINGS. WHERE AVAILABLE SPACE ALLOWS STOCKPILE HEIGHTS ARE TO BE 2.0m MAX WITH 1 IN 4 BATTERS.
- SILT FENCING SHALL BE INSTALLED BEFORE COMMENCING EARTHWORKS. ALL OTHER EROSION CONTROL DEVICES SHALL BE INSTALLED UPON COMPLETION OF EARTHWORKS OR AS DIRECTED BY THE SUPERINTENDENT. REPAIR THE AREA EROSION PROOF WITHIN 4 DAYS OF COMPLETION.
- SILT FENCING SHALL BE PLACED ON CONTOUR WHEN POSSIBLE. WHEN NOT POSSIBLE INSTALL RETURN PANELS AT REGULAR INTERVALS OF 20m MAX. THE SURFACE TO MINIMIZE DUST.
- ALL TEMPORARY EARTH BERRMS AND DIVERSION ENHANCEMENTS SHALL BE MACHINE COMPACTED AND MAINTAINED TO THE SATISFACTION OF THE SUPERINTENDENT.
- INSTALL ALL EROSION CONTROL DEVICES PRIOR TO THE COMMENCEMENT OF CONSTRUCTION ACTIVITIES AND AS DIRECTED BY THE SUPERINTENDENT.
- INSPECT SEDIMENT CONTROL STRUCTURES WEEKLY AND AFTER STORMS FOR STRUCTURAL DAMAGE OR CLOGGING. REMOVE SILT TO MAINTAIN STORAGE CAPACITY. REPAIR ANY DAMAGE AND MAKE GOOD TO THE SATISFACTION OF THE SUPERINTENDENT.
- SILT REMOVED FROM SILT TRAPS SHALL BE DUMPED AT A LOCATION THAT PREVENTS SILT RE-ENTERING THE SYSTEM. LOCATION SHALL BE TO THE APPROVAL OF THE SUPERINTENDENT.
- ON COMPLETION OF INLET PITS, INSTALL AGG. PIPE IN GEOTEXTILE SOCK, FILLED WITH AGGREGATE, ACROSS THE OPENING. ENSURE PIPE COVERS THE FULL OPENING OF THE PIT. REMOVE ON COMPLETION OF THE WORKS. SAND BAGS ARE NOT AN ACCEPTABLE ALTERNATIVE.
- DIVERT ALL STORMWATER RUNOFF AWAY FROM DISTURBED GROUND AND INTO INTACT NATIVE VEGETATION OR THE STORMWATER DRAINAGE SYSTEM.
- COMPLETE ALL FINAL EROSION PREVENTION MEASURES PRIOR TO FINAL HANDOVER INSPECTION. MAINTAIN ALL CONTROL DEVICES UNTIL THE END OF THE DEFECTS LIABILITY PERIOD.
- ADDITIONAL EROSION CONTROLS MAY BE REQUIRED DURING CONSTRUCTION AS DETERMINED BY THE SUPERINTENDENT IN CONSULTATION WITH INEATAS.
- ANY CHANGES TO THE EROSION AND SEDIMENT CONTROL PLAN SHALL BE SUBMITTED BY THE CONTRACTOR TO SUPERINTENDENT FOR APPROVAL PRIOR TO COMMENCEMENT.
- ALL EROSION AND SEDIMENT CONTROL MEASURES SHALL BE UNDERTAKEN TO THE SATISFACTION OF THE SUPERINTENDENT.

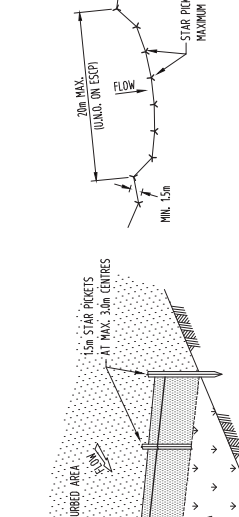
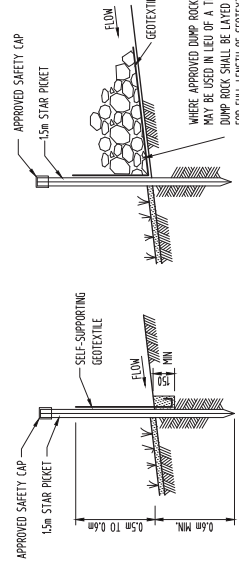


TYPICAL TRAPEZOIDAL DRAIN

N.T.S.

SEDIMENT FENCE CONSTRUCTION NOTES:

- CONSTRUCT ALL SEDIMENT CONTROL FENCES ALONG THE CONTOUR WHERE POSSIBLE.
- WHERE SEDIMENT CONTROL FENCES ARE NOT CONSTRUCTED ALONG THE CONTOUR INCORPORATE RETURN PANELS AT REGULAR INTERVALS NOT EXCEEDING 20m.
- ALL STAR PICKETS SHALL INCORPORATE APPROVED SAFETY CAPS
- DIG A 100mm DEEP TRENCH ALONG THE UPSLOPE LINE OF THE FENCE FOR THE BOTTOM OF THE FABRIC TO BE ENTRINCHED. BACKFILL TRENCH OVER BASE FABRIC. FIX SELF-SUPPORTING GEOTEXTILE TO UPSLOPE SIDE OF PICKETS WITH WIRE TIES OR AS RECOMMENDED BY GEOTEXTILE MANUFACTURER. JOIN SECTIONS OF FABRIC AT A SUPPORT POST WITH A 150mm OVERLAP.
- WHERE APPROVED BY THE SUPERINTENDENT DUMP ROCK MAY BE USED TO ANCHOR THE GEOTEXTILE IN LEAD OF A TRENCH.

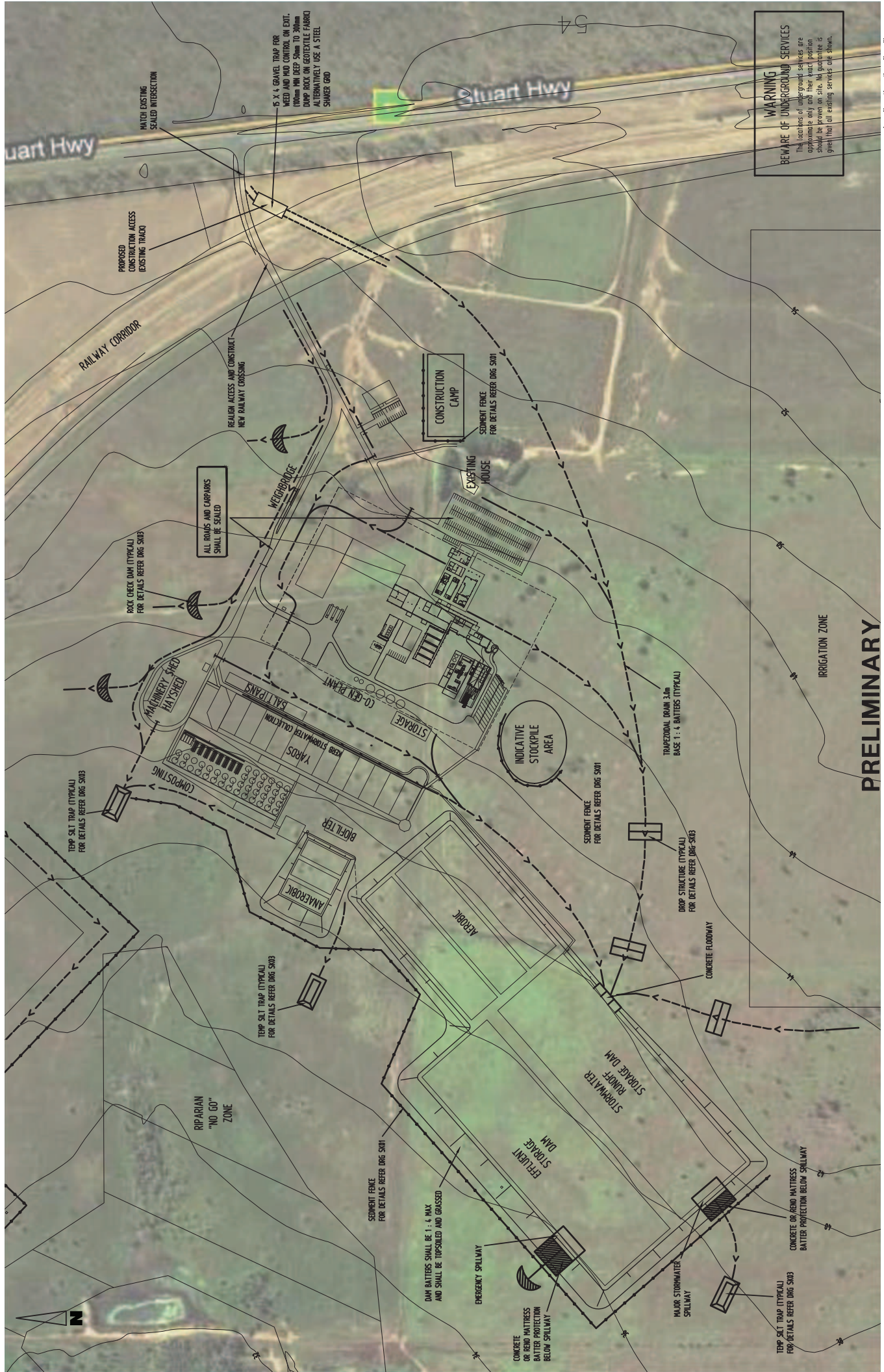


SEDIMENT FENCE INSTALLATION DETAILS

N.T.S.

PRELIMINARY

<p>TITLE: DARWIN ABATORRY ACCESS, STORMWATER DRAINAGE AND EROSION AND SEDIMENT CONTROL - SHEET 1 OF 3</p>		<p>SCALE: AS SHOWN PROJECT NO: 1977 DRAWING NO: 1977-SK01</p>	
<p>PROJ. MANAGER DOWN: MDW DESIGNED: SPB</p>		<p>CHECKED: MDW CHECKED: SPB</p>	
<p>ABN 78 174 388 192 P.O.Box 43420 Casuarina NT 0811 Ph. 08 89418011 Fax 08 89418201</p>		<p>byrne design</p>	
<p>MEATEENG PTY LTD</p>		<p>CUSTOMER</p>	
<p>comment The contents of this document are the copyright of MEATEENG PTY LTD. No part of this document may be reproduced, stored in a retrieval system, or transmitted in any form or by any means, electronic, mechanical, photocopying, recording, or otherwise, without the prior written permission of MEATEENG PTY LTD. Any unauthorised use of the contents of this document may constitute an infringement of copyright.</p>		<p>AMENDMENT</p>	
NO.	DATE	INITIALS	
1			
2			
3			
4			
5			

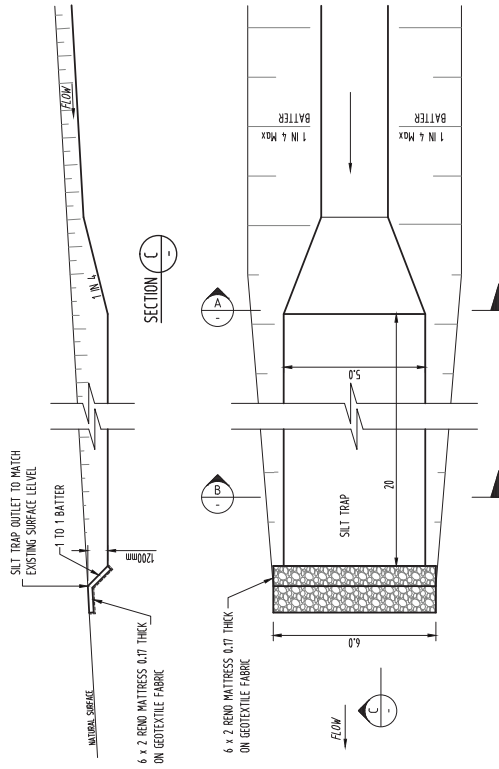


WARNING
BEWARE OF UNDERGROUND SERVICES
 The locations of underground services are approximate only and their exact position should be proven on site. No guarantee is given that all existing services are shown.

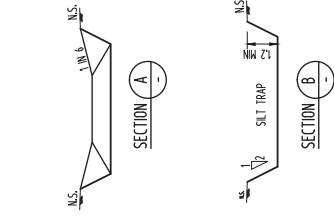
Scale 1:2000 A1
 0 20 40 60 80 100 Metres

<p>CLIENT MEATEUNG PTY LTD</p>		<p>CLIENT DARWIN ABATTOR ACCESS, STORMWATER DRAINAGE AND EROSION AND SEDIMENT CONTROL - SHEET 2 OF 3</p>	
<p>PROJECT NO 197</p>		<p>PROJECT NO 197</p>	
<p>SCALE AS SHOWN</p>		<p>SCALE AS SHOWN</p>	
<p>DATE 15/01/2014</p>		<p>DATE 15/01/2014</p>	
<p>DESIGNED BY [Name]</p>		<p>DESIGNED BY [Name]</p>	
<p>CHECKED BY [Name]</p>		<p>CHECKED BY [Name]</p>	
<p>APPROVED BY [Name]</p>		<p>APPROVED BY [Name]</p>	
<p>AMENDMENT</p>		<p>AMENDMENT</p>	
<p>BYRNE design AUST 18 174 388 192 P.O.Box 43420 Casuarina NT 0801 Ph. 08 8948011 Fax. 08 8948201</p>		<p>BYRNE design AUST 18 174 388 192 P.O.Box 43420 Casuarina NT 0801 Ph. 08 8948011 Fax. 08 8948201</p>	

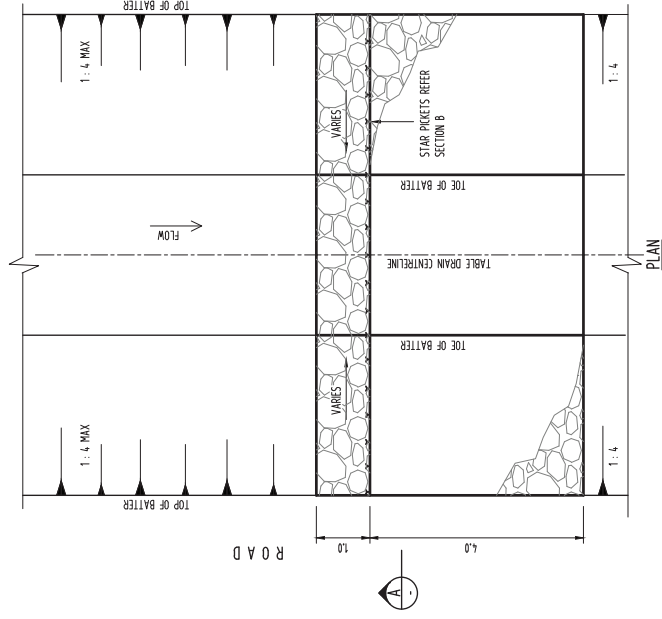
PRELIMINARY



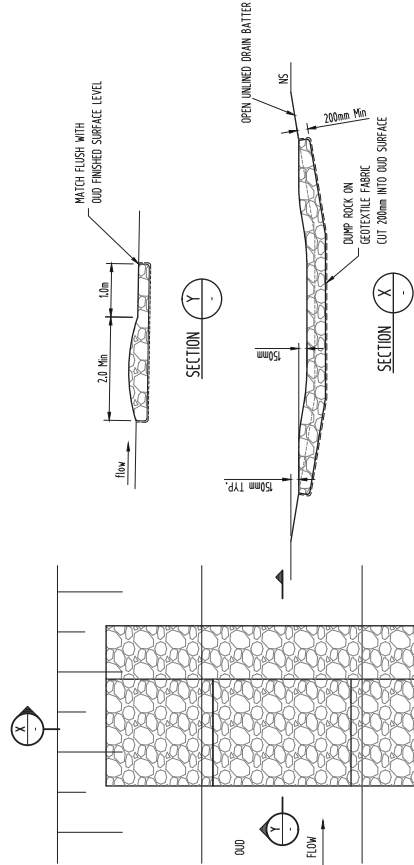
TEMP SILT TRAP DETAIL
N1.5.5.



TYPICAL MULCH BERM
N1.5.5.



DROP STRUCTURE DETAIL
N1.5.5.



ROCK CHECK DAM DETAIL
N1.5.5.

- CONSTRUCTION NOTES:
1. TRENCH STRUCTURE 200mm INTO GROUND SURFACE WHEREVER THE STRUCTURE CONTACTS THE OLD BASE. FILL TRENCHES TO 100mm ABOVE GROUND SURFACE TO REDUCE RISK OF UNDERCUTTING.
 2. ENSURE HEIGHT OF SPILLWAY IS LESS THAN 1m ABOVE THE GULLY FLOOR.

PRELIMINARY

<p>CLIENT</p> <p>MEATENG PTY LTD</p>		<p>PROJ. MANAGER</p> <p>DESIGNED BY: SPB</p> <p>CHECKED BY: MDW</p> <p>DATE: 19/7</p>		<p>TITLE</p> <p>DARWIN ABATTOR ACCESS, STORMWATER DRAINAGE AND EROSION AND SEDIMENT CONTROL - SHEET 3 OF 3</p>		<p>SCALE</p> <p>AS SHOWN</p>		<p>PROJECT NO</p> <p>197</p>		<p>DRAWING NO</p> <p>197-SK03</p>	
<p>AMENDMENT</p>		<p>DATE</p>		<p>BY</p>		<p>FOR</p>		<p>REASON</p>		<p>APPROVED BY</p>	

byrne design

ABN 78 124 388 192
P.O.Box 43420 Casuarina NT 0811
Ph. 08 89148111 Fax. 08 89448201