

SECTION 14 INCIDENT REPORT (*Waste Management and Pollution Control Act*)

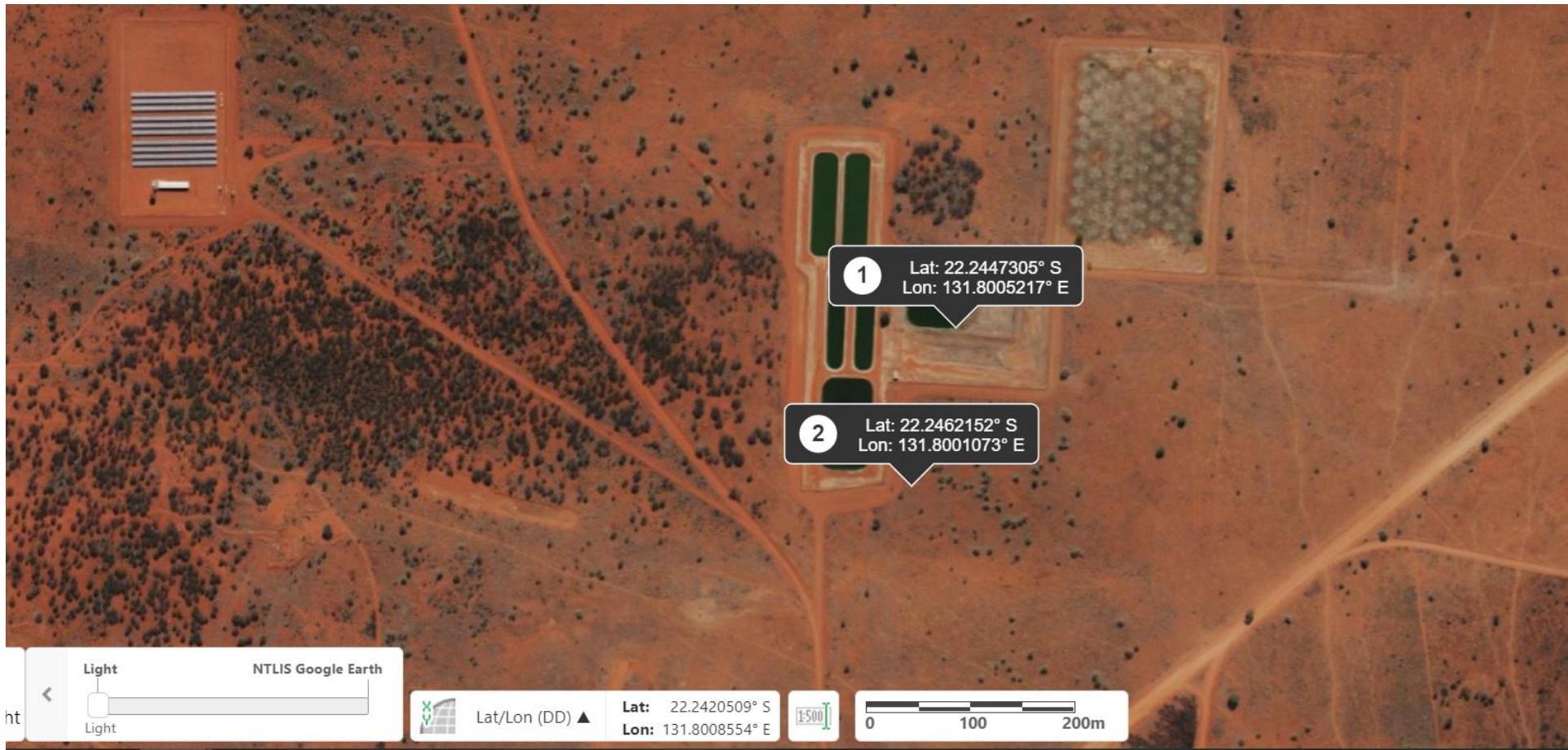
Date and Time of Notification:	Wednesday 9 th February 2022, 17:00hrs
Person / Company:	Power and Water Corporation (PWC)
Incident:	Discharge of sewage from sewerage network, Yuendumu wastewater stabilisation ponds

<p>(a) the incident causing or threatening to cause pollution</p>	<p><i>i. Description of the waste that was discharged.</i></p> <p>Fully treated and diluted sewage</p> <p><i>ii. Indicative wastewater quality for the discharge.</i></p> <p>No representative data on wastewater quality is available for this site. The sewage is not only heavily diluted but also fully treated, as ponds 1-5 are treatment ponds and 6 & 7 are evaporation ponds, with the spill having come from ponds 6 & 7. The heavy rainfall in the area prior to the overflow would have heavily diluted the contents of the ponds.</p> <p><i>iii. Volume of the waste that was discharged.</i></p> <p>The exact volume of wastewater discharged is unknown, the discharge point is not a planned discharge point and no telemetric monitoring occurs at the site of discharge.</p>
<p>(b) the place where the incident occurred</p>	<p><i>i. Description of the PWC asset from which the discharge occurred.</i></p> <p>Yuendumu wastewater stabilisation ponds, ponds number 6 and 7.</p> <p><i>ii. GPS coordinates of the discharge point from the PWC asset, and the final coordinates of the final discharge point.</i></p> <p>Discharge Point: 131.8005217E, 22.2447305S Final Discharge Point: 131.8001073E, 22.2462152S</p> <p><i>iii. Indicate any locations nearby to the discharge point where public can gain ready-access, such as public open spaces through which the discharge moves.</i></p> <p>Access by the public was possible to the majority of the spill, however the spill was contained in the road area outside the front gate of the compound. This road only provides access to the wastewater treatment and disposal facility.</p>

<p>(c) the date and time of the incident</p>	<p><i>i. The time and date of commencement and cessation of the discharge.</i></p> <p>The start time of the overflow is unknown, but was first observed at 6:00pm on Tuesday 8th February 2022.</p> <p><i>ii. How PWC were notified, or became aware of the discharge.</i></p> <p>The spill was identified by a Power and Water Service Coordinator during a site inspection in the community.</p> <p><i>iii. The process by which the discharge occurred.</i></p> <p>The irrigation system pumps water from pond 5 to an irrigation area, with any additional overflow from pond 5 entering ponds 6 and 7 for evaporation and disposal. The irrigation pump faulted on 28/1/22 and due to the high rainfall and high volume of sewage production by the community ponds 6 and 7 reached capacity and ultimately overflowed.</p> <p><i>iv. The reason why the discharge occurred.</i></p> <p>As per (c) iii, As above.</p>
<p>(d) how the pollution has occurred, is occurring or may occur</p>	<p>As per (c) iii & (c) iv.</p>
<p>(e) the attempts made to prevent, reduce, control, rectify or clean up the pollution or resultant environmental harm caused or threatening to be caused by the incident</p>	<p>On discovering the overflow the Service Coordinator reconfigured the system and used the irrigation pump to redirect the contents of the ponds to a holding basin within the PWC site. By 14:00hrs on 09/2/22 the overflow through the site boundary had ceased.</p> <p><i>i. Confirmation signage and fencing has been erected, as appropriate.</i></p> <p>Fencing and signage have not been erected in this instance, due to the high quality of the dilute treated water in the overflow and as the opportunity for public to have contact with the standing water outside the fence is minimal. It is expected that the spill will rapidly dry up.</p> <p><i>ii. Decontamination of the site as appropriate.</i></p> <p>Clean up consistent with Sewage Spills/Overflow Response Work Instruction as appropriate to the location. Site was inspected for any wastewater gross pollutants, of which none were observed.</p>
<p>(f) the identity of the person notifying the NT EPA</p>	<p>PWC Environmental Team on behalf of Water Services</p>

SECTION 14 INCIDENT REPORT (*Waste Management and Pollution Control Act*)

Appendix A – Location Map



Appendix B – Photographs of spill

