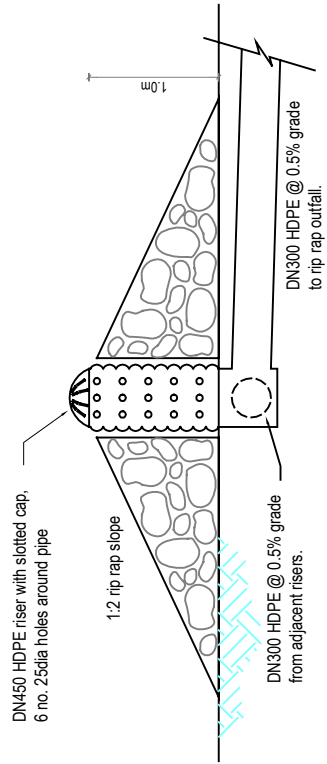
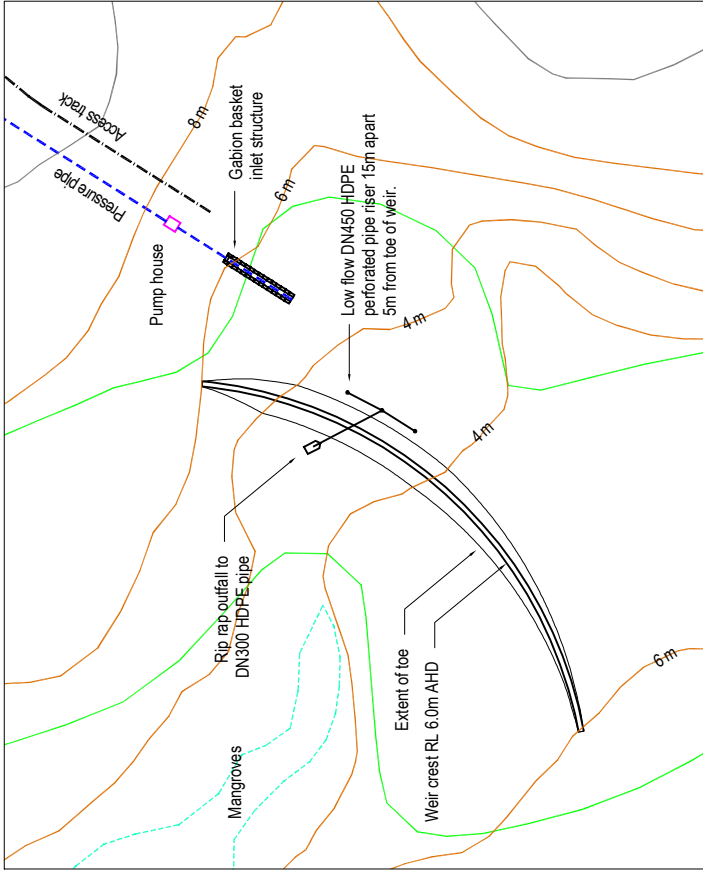
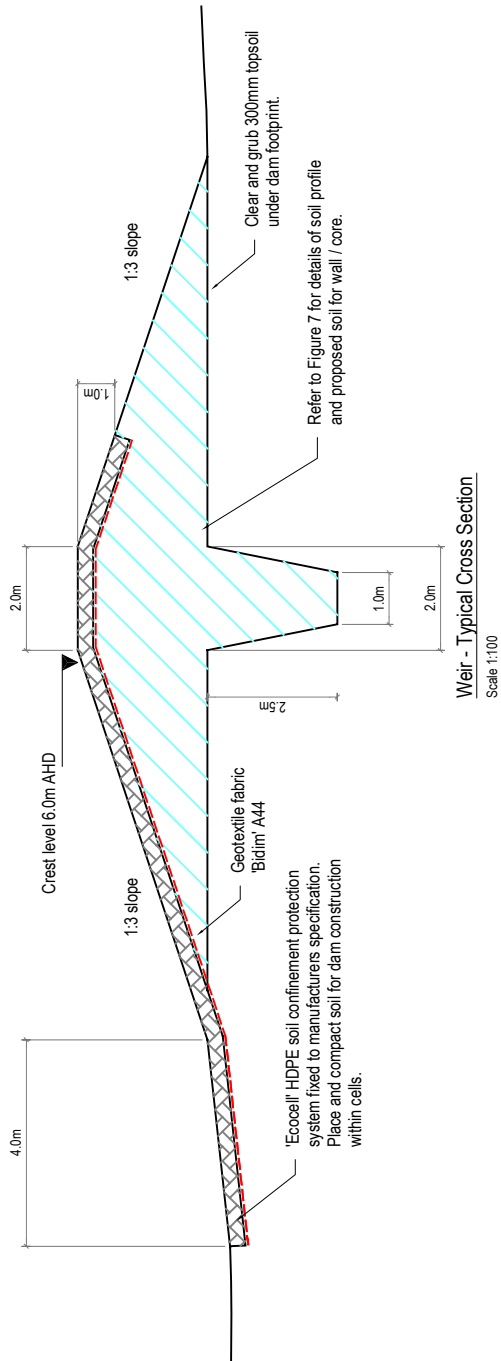


General Notes

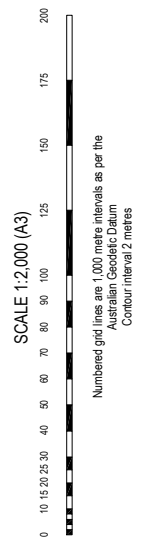
1. Material for the construction of the dam core and wall is to be won from excavation of production ponds and offstream storage reservoirs, typically sandy silty gravel 1.2 - 2.3m below surface. The same material is to be placed and compacted within the Ecocell panels, overlying geotextile fabric, staked to manufacturers specification.
2. Rip rap for low flow outlet protection is to be nominally 150 - 200kg stone, placed in 2m x 5m channel flush to surface.
3. Stone filter to low flow risers to be nominally 50 - 75mm rock.
4. Gabion inlet structure to be composed of 2.0 x 1.0 x 1.0m galvanised twisted wire mesh units, laced together in accordance with manuf. spec. Floor of inlet to be 6.0 x 2.0 x 0.17m reno mattress, at 4.5m AHD.
5. Gabions to be finished flush with surrounds to minimise scour.
6. Detailed survey is required of construction area to ensure no disturbance of potential acid sulphate soils. Nominal distance upstream of vegetation indicated on aerial photographs of 50m to be maintained.
7. Survey will determine exact extent of gabion inlet structure and low flow outfall structure.



Low Flow Riser
Scale 1:40



Weir - Typical Cross Section
Scale 1:100



SCALE 1:2,000 (A3)