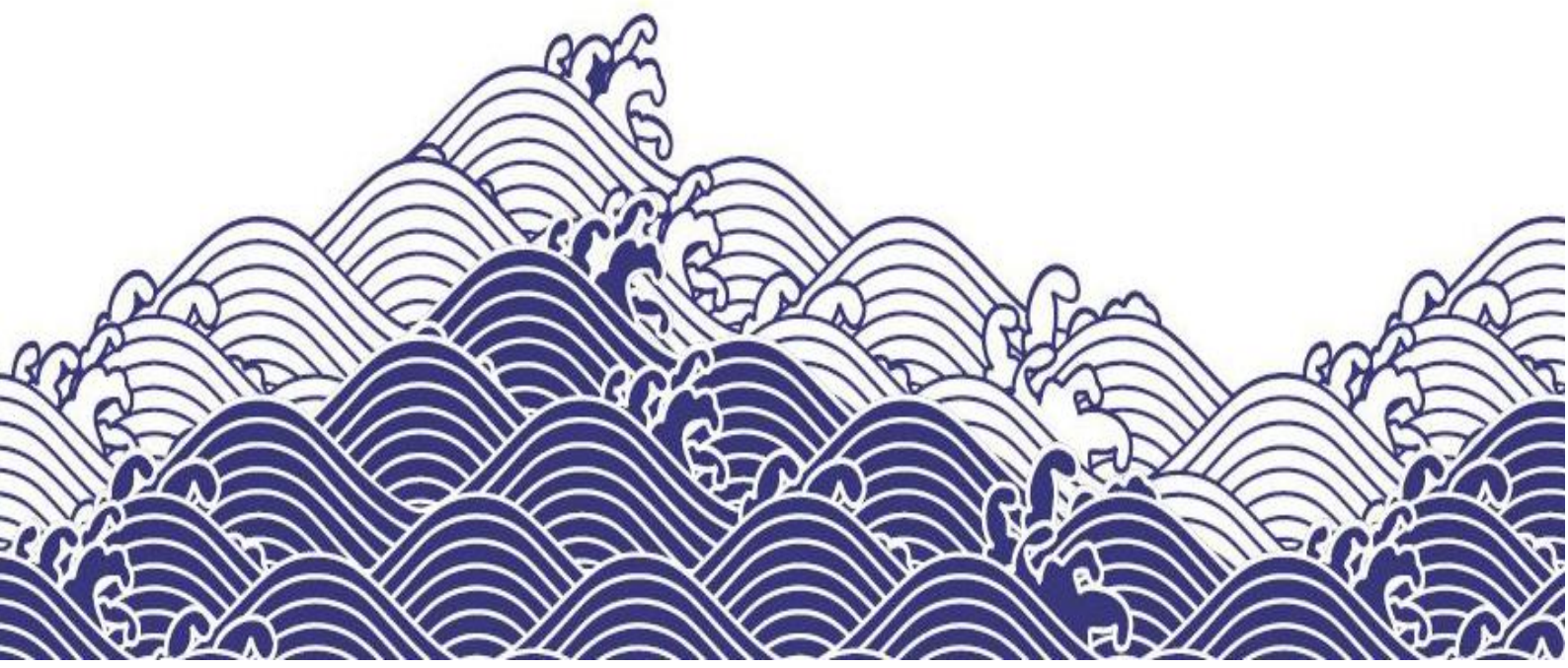




## **Appendix D:**

# **Bonaparte Carbon Capture and Storage (CCS) Stakeholder Engagement Plan**



**RECORD OF AMENDMENT**

Revision	Section	Amendment

**DOCUMENT DISTRIBUTION**

	Name
00	Document Control

**NOTICE**

All information contained within this document has been classified by INPEX as **Public** and must only be used in accordance with that classification. Any use contrary to this document's classification may expose the recipient and subsequent user(s) to legal action. If you are unsure of restrictions on use imposed by the classification of this document you must refer to 0000-A9-STD-60008, Sensitive Information Protection Standard or seek clarification from INPEX.

**Uncontrolled when printed.**

**TABLE OF CONTENTS**

<b>1</b>	<b>INTRODUCTION .....</b>	<b>9</b>
1.1	Purpose.....	11
1.2	Regulatory requirements.....	11
<b>2</b>	<b>PROPOSED SCOPE.....</b>	<b>13</b>
<b>3</b>	<b>APPROACH TO STAKEHOLDER ENGAGEMENT .....</b>	<b>16</b>
3.1	INPEX principles of stakeholder engagement.....	16
<b>4</b>	<b>IDENTIFICATION OF STAKEHOLDERS AND CONSULTATION</b>	
	<b>METHODOLOGY .....</b>	<b>18</b>
4.1	Step 1 – Prepare for stakeholder identification workshop .....	20
4.2	Step 2 – Undertake stakeholder identification workshop .....	23
4.3	Step 3 – Prepare for consultation .....	27
4.4	Step 4 – Consult with stakeholders.....	28
<b>5</b>	<b>BONAPARTE CCS PROJECT STAKEHOLDER REGISTERS.....</b>	<b>29</b>
<b>6</b>	<b>STAKEHOLDER AND COMMUNITY FEEDBACK .....</b>	<b>30</b>
6.1	Feedback mechanisms.....	30
6.2	Community feedback management.....	30
6.3	Monitoring traditional and social media .....	30
<b>7</b>	<b>EVALUATION, MONITORING AND REPORTING .....</b>	<b>31</b>
7.1	General .....	31
7.2	Project specific monitoring and evaluation .....	31

**LIST OF TABLES**

Table 4-1:	Data sources used to identify persons, organisations, departments, agencies and/or authorities .....	21
Table 4-2:	Categorisation of stakeholders .....	25
Table 4-3:	Consultation strategy level .....	25
Table A-1:	Pre-referral stakeholders and consultation approach .....	32
Table B-1:	Post-referral stakeholders and consultation approach .....	43

**LIST OF FIGURES**

Figure 1-1:	Indicative locations of proposed Bonaparte CCS Project (orange). Not to scale. ....	10
Figure 2-1:	Proposed infrastructure location .....	15
Figure 3-1:	Integrated stakeholder management approach.....	17
Figure 4-1:	Overall approach to stakeholder determination and consultation .....	19
Figure 4-2:	Determination of stakeholders .....	24

**TABLE OF APPENDICES**

APPENDIX A:	STAKEHOLDER REGISTER – PRE-REFERRAL CONSULTATION .....	32
APPENDIX B:	STAKEHOLDER REGISTER – ONGOING CONSULTATION .....	43



**Terms, abbreviations and acronyms**

<b>Term, abbreviation or acronym</b>	<b>Meaning</b>
AAPA	Aboriginal Areas Protection Authority
ACMA	Australian Communications and Media Authority
AFANT	Amateur Fishermen's Association of the Northern Territory
AFMA	Australian Fishery Management Authority
ASBTIA	Australian Southern Bluefin Tuna Industry Association
ASIC	Australian Securities & Investments Commission
BAC	Balanggarra Aboriginal Corporation RNTBC
CBD	central business district
CCNT	Chamber of Commerce NT
CCS	carbon capture and storage
CO <sub>2</sub>	carbon dioxide
Cwlth	Commonwealth
DAF	Department of Agriculture and Fisheries
DAFF	Department of Agriculture, Fisheries and Forestry
DCCEEW	Department of Climate Change, Energy, the Environment and Water (Cwlth)
DEPWS	Department of Environment, Parks and Water Security
DHAC	Darwin Harbour Advisory Committee
DISR	Department of Industry, Science and Resources
DITT	Department of Industry, Tourism and Trade
DITRDCA	Department of Infrastructure, Transport, Regional Development, Communications and the Arts
DLI	Department of Logistics and Infrastructure
DLPE	Department of Lands, Planning and Environment
DNP	The Director of National Parks

DoD	Department of Defence
DME	Department of Mining and Energy
DTBAR	Department of Trade, Business and Asian Relations
ECNT	The Environment Centre NT
EP Act	<i>Environment Protection Act 2019 (NT)</i>
EPBC Act	<i>Environment Protection and Biodiversity Conservation Act 1999 (Cwlth)</i>
FAQs	frequently asked questions
GEP	Gas Export Pipeline
ICN	Industry Capability Network
ILNG	Ichthys LNG
ILSC	Indigenous Land and Sea Corporation
INPEX	INPEX Operations Australia Pty Ltd
JV	Joint Venture
LDC	Land Development Corporation
LDC	Larrakia Development Corporation
LGAs	Local Government Authorities
LNAC	Larrakia Nation Aboriginal Corporation
LNG	liquefied natural gas
MASDP	Middle Arm Sustainable Development Precinct
mtpa	million tonnes per annum
NAILSMA	Northern Australian Indigenous Sea Alliance
NLC	Northern Land Council
NOPTA	National Offshore Petroleum Title Administrator
NT	Northern Territory
NT EPA	Northern Territory Environment Protection Authority
NTIBN	Northern Territory Indigenous Business Network
NTSC	Northern Territory Seafood Council

PSLA	Petroleum (Submerged Lands) Act 1981 (NT)
QLD	Queensland
SA	South Australia
SCA	Sea Country Alliance
SEC	NT EPA Stakeholder Engagement and Consultation: Environmental Impact Assessment Guidance for Proponents
SIA	social impact assessment
SME	subject matter expert
TDC	Thamarrurr Development Corporation
TEACA	Top End Aboriginal Coastal Alliance Inc
the/this Plan	Bonaparte Carbon Capture and Storage (CCS) Stakeholder Engagement Plan (T075-AH-PLN-70001)
the Project	Bonaparte CCS Project
TLC	Tiwi Land Council
UCH	Underwater Cultural Heritage
WA	Western Australia
WAFIC	Western Australian Fishing Industry Council

## 1 INTRODUCTION

INPEX Operations Australia Pty Ltd (INPEX) is actively working to decarbonise its operations and deliver a stable supply of diverse and clean energy sources<sup>1</sup>. Carbon capture and storage (CCS) is a safe and proven emissions reduction technology that can be applied to liquefied natural gas (LNG) production to capture naturally occurring carbon dioxide (CO<sub>2</sub>) from the reservoir hydrocarbon stream<sup>2</sup>.

INPEX, as operator of the Bonaparte CCS Assessment Joint Venture (consisting of INPEX Browse E&P Pty Ltd, TotalEnergies CCS Australia Pty Ltd and Woodside Energy Ltd) is proposing to develop the Bonaparte CCS Project (herein referred to as the Project), a large-scale multi-user CCS facility in the Northern Territory of Australia.

The Project involves the development of infrastructure to receive, compress, transport and permanently sequester CO<sub>2</sub> within a geological formation located approximately 2,000 metres below the seabed.

The geological formation proposed for development by the Project has been assessed to have large-scale storage characteristics, including the potential to sequester in excess of 10 million tonnes per annum (mtpa) of CO<sub>2</sub>.

The Bonaparte CCS Project has an aspiration for future expansion to service anticipated CO<sub>2</sub> storage demand from across the Asia Pacific region.

.

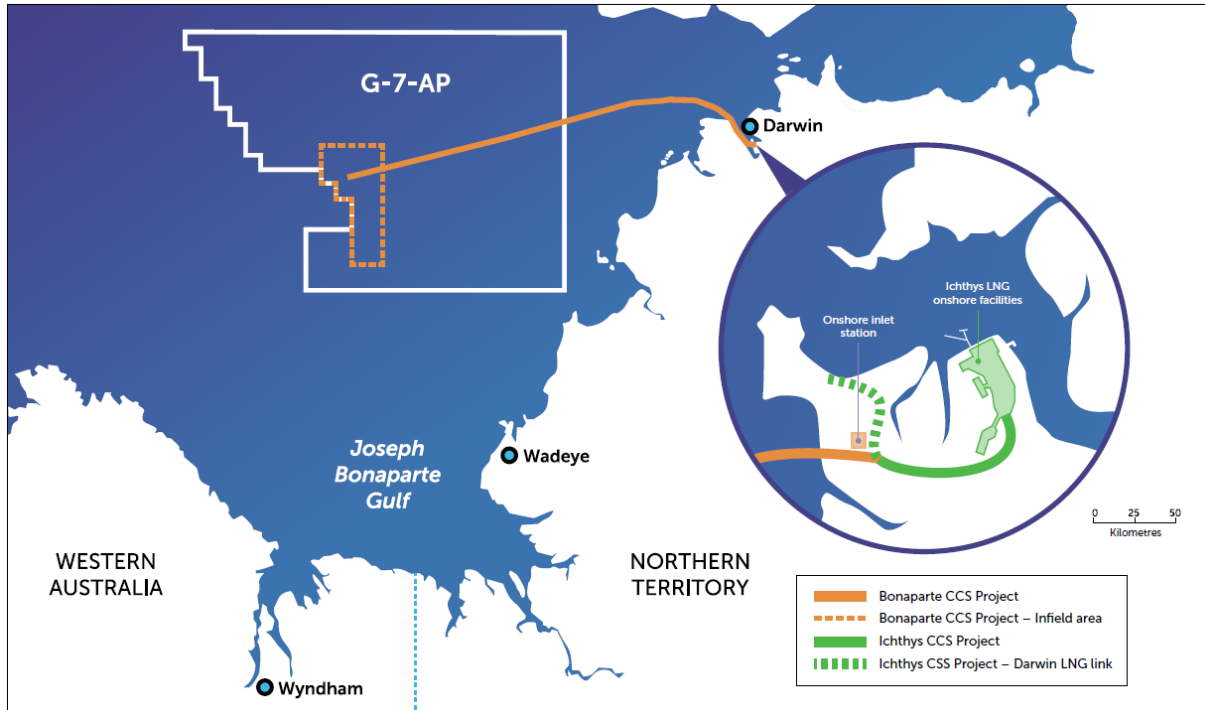
The proposed infrastructure for permanent sequestration would be located approximately 250 kilometres west of Darwin in the Joseph Bonaparte Gulf. The transport infrastructure would comprise of a CO<sub>2</sub> pipeline and control cable extending between the Joseph Bonaparte Gulf and the Middle Arm peninsula in Darwin where the onshore inlet station is proposed to be developed.

CO<sub>2</sub> emissions could potentially be collected from a range of potential customers in the region, including reservoir CO<sub>2</sub> from Ichthys LNG onshore facilities. The development of CCS-related facilities at Ichthys LNG is being progressed by INPEX (as operator for Ichthys LNG Pty Ltd) as a separate project, referred to as the Ichthys CCS Project. Indicative outlines of how these two projects may interface is shown in Figure 1-1.

---

<sup>1</sup> INPEX. (n.d.). New Energy. <https://www.inpex.com.au/projects/new-energy>

<sup>2</sup> IEA (2021), About CCUS, IEA, Paris <https://www.iea.org/reports/about-ccus>, Licence: CC BY 4.0



**Figure 1-1: Indicative locations of proposed Bonaparte CCS Project (orange). Not to scale.**

## 1.1 Purpose

INPEX recognises stakeholder consultation is an integral part of the environmental impact assessment process and that community engagement is essential to forging trusted and strong relationships within the communities in which we operate.

This Bonaparte CCS Stakeholder Engagement Plan (the Plan) outlines the methodology for identifying stakeholders and the consultation approach undertaken during early planning phases of the Project.

Feedback obtained during early consultation is expected to support design and delivery of an ongoing consultation program throughout the life of the Project.

The Plan provides an overview of:

- the proposed work scopes.
- the stakeholder identification, prioritisation and categorisation methodology applied to the Project, consistent with other INPEX proposed projects requiring primary environmental approvals.
- a summary of potential stakeholders relevant to the Project scope and the engagement level and communications based on stakeholder needs.
- stakeholder and community feedback mechanisms.

The Plan is intended to support safe Project delivery through:

- Early engagement with key identified stakeholders to develop an understanding of stakeholder needs and engagement requirements throughout the Project life cycle.
- Early identification of potential issues relating to the proposed activities.
- Optimisation of the safety of local communities and stakeholders through early, targeted and consistent messaging.
- Delivery of clear, timely and integrated messaging about the Project activities.
- Compliance with Northern Territory and Commonwealth Governments' obtained approvals and licences.
- Management of reputational risk to INPEX and its joint venture participants.
- Minimisation of the likelihood of potential adverse effects of business activities to local communities and stakeholders active in the Project footprint by ensuring INPEX remains responsive to and accountable for issues of concern and interest to stakeholders.

## 1.2 Regulatory requirements

The Plan has been prepared to meet the regulatory requirements for consultation under the Commonwealth (Cwlth) *Environment Protection and Biodiversity Conservation Act 1999* (EPBC Act) and the Northern Territory (NT) *Environment Protection Act 2019* (EP Act), and subordinate legislation.

Schedule 2 of the *Environment Protection and Biodiversity Conservation Regulations 2000*, outlines the requirements of information that needs to be included within a referral. Clause 4.01(l) of the schedule requires the following:

*A description of any public consultation undertaken or occurring, including with indigenous persons that may be affected by the action, and copies of documents recording the outcomes of any consultations.*

Section 43 of the EP Act (NT) outlines the general duty of proponents and includes specific requirements for stakeholder consultation. Specifically, the EP Act requires the following:

*A proponent of an action has the following general duties under an environmental impact assessment process:*

- a. To provide communities that may be affected by a proposed action with information and opportunities for consultation to assist each community's understanding of the proposed action and its potential impacts and benefits;*
- b. To consult with affected communities, including Aboriginal communities, in a culturally appropriate manner; and*
- c. To seek and document community knowledge and understanding (including scientific and traditional knowledge and understanding) of the natural and cultural values of areas that may be impacted by the proposed action.*

In addition to the EP Act requirements, the Northern Territory Environment Protection Authority (NT EPA) *Stakeholder Engagement and Consultation: Environmental Impact Assessment Guidance for Proponents* (SEC) outlines the expectations of the NT EPA with regards to stakeholder consultation. The SEC outlines that proponents are responsible for undertaking stakeholder consultation from the earliest stage of the environmental impact assessment process, and that stakeholder consultation would continue throughout the life of an activity.

## 2 PROPOSED SCOPE

INPEX on behalf of the Bonaparte CCS joint venture participants is proposing to develop onshore and offshore infrastructure to gather CO<sub>2</sub> emissions and enable their transportation and permanent storage within a geological formation located in the Joseph Bonaparte Gulf.

The proposed onshore infrastructure includes an inlet station to gather and filter CO<sub>2</sub> located next to the existing Ichthys Gas Export Pipeline (GEP) beach valve station on the west side of Wickham Point Road. The inlet station would also provide for booster pumping facilities. The proposed permanent station infrastructure is anticipated to cover an area of 1.5 hectares.

Commencing from this onshore inlet station, an approximately 260-kilometre long CO<sub>2</sub> pipeline would extend through Darwin Harbour to the injection facilities at the proposed storage site.

The CO<sub>2</sub> pipeline is proposed to enter the Harbour immediately south of the existing Ichthys GEP shore crossing. It would be positioned outside of the main Darwin Port shipping channel and run parallel to the existing Ichthys GEP on the south-west side. Within inner Darwin Harbour, the CO<sub>2</sub> pipeline would be located at a separation of approximately 70 metres from the Ichthys GEP and be protected by trenching and rock armouring.

Several pipeline routes are under consideration for the final approach to the proposed storage site in Commonwealth waters (Figure 2-1).

A subsea power and fibre optic cable is proposed to provide power and control functionality to the Bonaparte CCS subsea injection facilities. The cable is proposed to be installed adjacent to the offshore CO<sub>2</sub> pipeline along the entire route. To provide redundancy, a back-up cable may also be installed in Darwin Harbour parallel and slightly offset to the primary cable.

At the offshore injection site, all facilities would be designed to be placed on the seabed so as to avoid the need for any permanent facilities on the sea surface (Figure 2-1). The offshore CO<sub>2</sub> pipeline is proposed to be connected to a subsea manifold structure, while short infield pipelines would distribute CO<sub>2</sub> to each of the remotely operated injection wells. A power and fibre-optic cable connected to each of the wells is also proposed.

To safely and permanently sequester CO<sub>2</sub> a total of up to six injection wells are planned, including two contingent wells.

All elements of the proposed Bonaparte CCS injection system would be monitored and operated from an onshore facility via a single integrated control system.

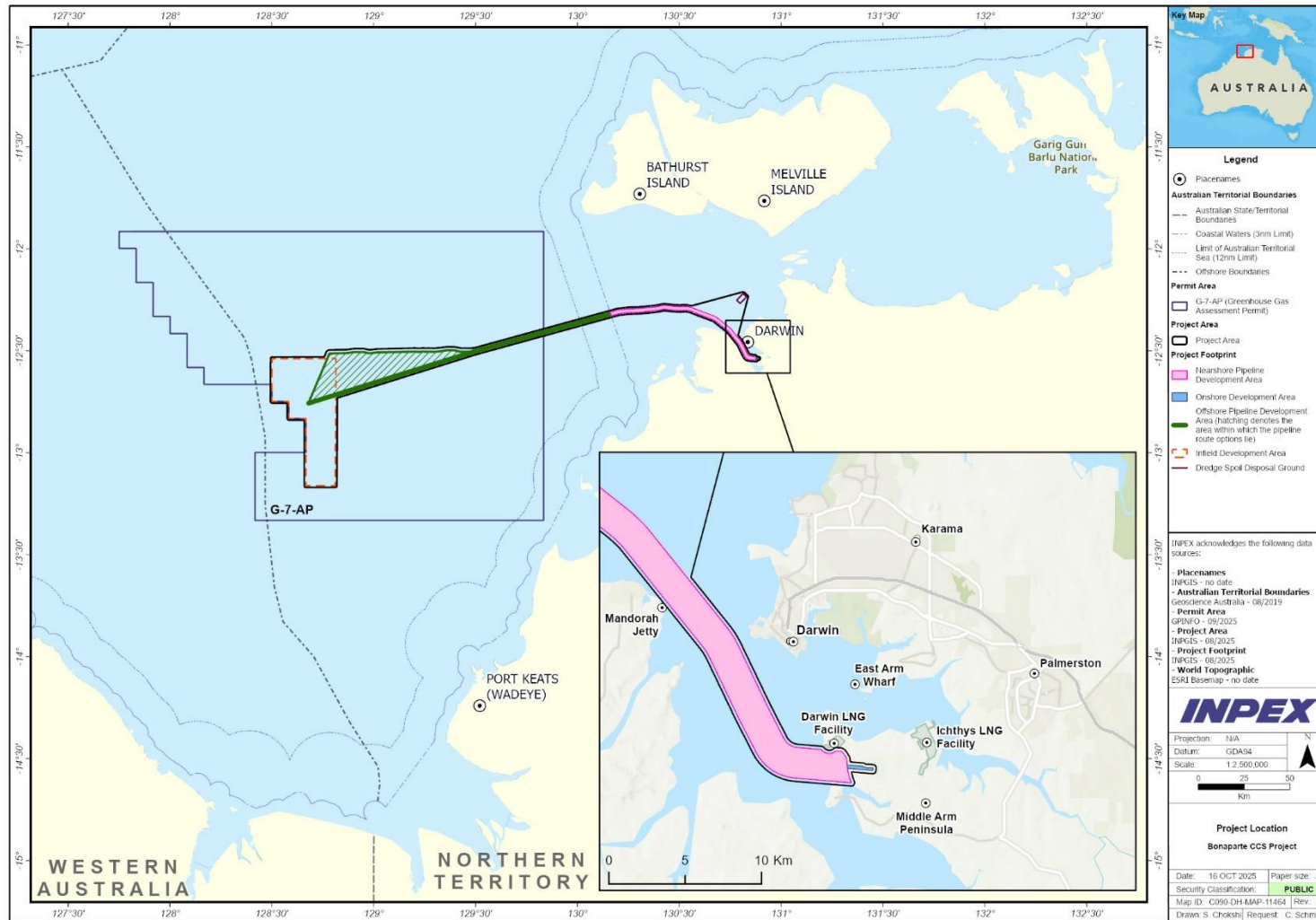
The Project facilities are proposed to be designed for an operational life of approximately 30 years. Ongoing inspection, maintenance and repair work would be performed periodically by a combination of crewed and autonomous vessels.

The following proposed activities are required to support the planned infrastructure works:

- Site preparation and construction of onshore inlet station
- Dredging, trenching and shore-pull preparation
- Shallow water pipelay
- Power and control cable installation
- Offshore pipelay
- Pipeline pre-commissioning
- Drilling and completion of injection wells

- Infield facilities
- Pipeline facilities and commissioning
- Commence injection
- Operations from an onshore facility via a single integrated control system
- Measurement, monitoring and verification
- Inspection, maintenance and repair
- Decommissioning.

The indicative schedule for the Project construction phase spans the period 2028 to 2031 and is dependent on public consultation, regulatory approvals, weather and commercial considerations.



**Figure 2-1: Proposed infrastructure location**

Document No: T075-AH-PLN-70001

Security Classification: Public

Revision: 0

Last Modified: 16 October 2025

### 3 APPROACH TO STAKEHOLDER ENGAGEMENT

INPEX has worked closely with a diverse set of stakeholders in the Northern Territory since 2009, including political and government, Aboriginal organisations, representative bodies, industry, community representatives and partners and is committed to developing and maintaining long-term relationships with stakeholders in areas where it has an operational presence.

INPEX recognises new business activities require a considered and tailored approach to stakeholder engagement. To achieve this, INPEX has identified a range of stakeholders (existing and emerging) it believes are likely to be affected by the planned activities.

The Plan seeks to be an ongoing commitment to community and stakeholder engagement throughout the life cycle of the Project. The Plan is intended to consider stakeholder feedback to deliver an understanding of:

- potential impacts of Project activities to stakeholders throughout the Project life cycle
- stakeholder queries or concerns about the nature of the activities and the broader project
- preferred engagement methodologies and level of information required for individual stakeholders / stakeholder groups.

#### 3.1 INPEX principles of stakeholder engagement

INPEX believes effective stakeholder engagement is essential to maximising the safety of all personnel and the community and in establishing, building and maintaining community support and trust. INPEX works closely with identified stakeholders to provide integrated, timely and effective information to the community and provide mechanisms for feedback and response.

INPEX's approach to integrated stakeholder engagement is based on five key principles and is applied to all INPEX-operated projects, as detailed in Figure 3-1 and include:

- regular personal contact with priority stakeholders
- consistent, timely, coordinated and responsive communication across all stakeholder groups
- upfront communication about Project issues and impacts
- easily accessible information; and
- ongoing monitoring and improvement.



**Figure 3-1: Integrated stakeholder management approach**

## **4 IDENTIFICATION OF STAKEHOLDERS AND CONSULTATION METHODOLOGY**

This section describes INPEX's process used for identifying stakeholders and determining the level of consultation required with each. An overview of the approach is shown in Figure 4-1, with a description of each of the steps provided in subsequent sections.

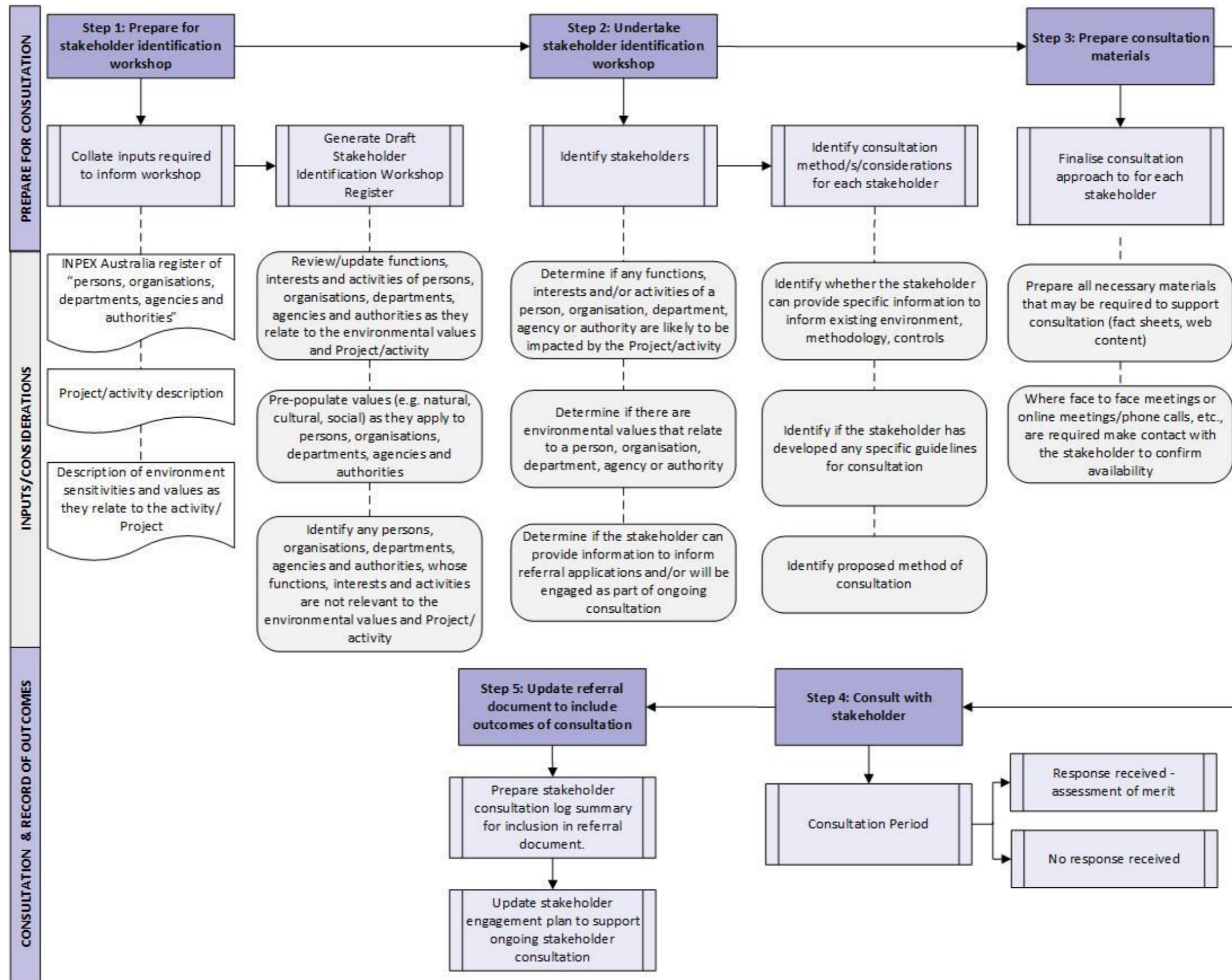


Figure 4-1: Overall approach to stakeholder determination and consultation

## **4.1 Step 1 – Prepare for stakeholder identification workshop**

Prior to undertaking a workshop to identify stakeholders for the purpose of environmental approvals consultation, a number of inputs are required. Preparation of these inputs, described in Section 4.1.1, may take several weeks in advance of the workshop. Once the input data has been compiled it will be used as the basis for pre-population of the draft register of stakeholders (refer Section 4.1.2) prior to the stakeholder identification workshop (refer Section 4.2).

### **4.1.1 Workshop inputs**

#### **INPEX stakeholder register**

INPEX maintains a comprehensive Stakeholder Register which was developed for INPEX by an external consultancy which specialises in consultation and community relations. The register includes contact details and a general description for each entity and includes existing INPEX stakeholders who have been consulted with during the development and operation of the Ichthys LNG Project (since 2008).

Categories in the register include Government departments, agencies and authorities, local government authorities, Aboriginal and Torres Strait Islander organisations and interest groups, community organisations, commercial fishing licence holders, businesses, environmental organisations (non-government) and other offshore (oil and gas or greenhouse gas) titleholders. Various data sources were used to identify the persons, organisation, departments, agencies or authorities applicable to INPEX activities, these are presented in Table 4-1 for each category.

The register is maintained by the INPEX Corporate Affairs function with input from environmental specialists and other technical subject matter experts (SMEs). The register is reviewed on a regular basis to ensure it remains current and accurate. The review considers name changes (e.g. government agencies, government ministers, changes in key personnel), new persons and organisations identified during the course of other consultation campaigns.

The content of this register was used to generate a new draft register of potential stakeholders that may require consultation during the preparation of primary environmental approval applications for the Bonaparte CCS Project (draft project register). The draft register has been reviewed and populated during stakeholder identification workshops specific to the Bonaparte CCS Project.

**Table 4-1: Data sources used to identify persons, organisations, departments, agencies and/or authorities**

Category	Data sources
Government departments, agencies and authorities	The following data sources were used to determine potentially relevant Government departments, agencies and authorities: <ul style="list-style-type: none"> <li>• <a href="http://www.directory.gov.au/departments-and-agencies">http://www.directory.gov.au/departments-and-agencies</a></li> <li>• <a href="https://www.wa.gov.au/agency">https://www.wa.gov.au/agency</a></li> <li>• <a href="https://nt.gov.au/about-government/government-agencies">https://nt.gov.au/about-government/government-agencies</a></li> <li>• <a href="#">Relevant Decision Makers (nopta.gov.au)</a></li> </ul>
Local Government Authorities (LGAs)	The following data sources were used to determine potentially relevant LGAs: <ul style="list-style-type: none"> <li>• <a href="#">Find your council   NT.GOV.AU</a></li> <li>• <a href="#">Local Government Directory   WALGA</a></li> <li>• <a href="#">Zones   WALGA</a></li> </ul>
Aboriginal and Torres Strait Islander Traditional peoples, Traditional Owners and Site Custodians, Native Title Representative Bodies, Prescribed Body Corporates and other relevant Indigenous community organisations	The following data sources were used to determine potentially relevant Indigenous peoples and community organisations: <ul style="list-style-type: none"> <li>• Relevant data previously obtained by INPEX.</li> <li>• Input from internal and external technical SMEs.</li> <li>• National Native Title Tribunal Register of Native Title Claims and Determinations <a href="http://www.nntt.gov.au/Pages/Home-Page.aspx">http://www.nntt.gov.au/Pages/Home-Page.aspx</a></li> <li>• Prescribed Body Corporate website <a href="https://www.nativetitle.org.au">https://www.nativetitle.org.au</a>.</li> <li>• Aboriginal and Torres Strait Islander peoples ranger groups <a href="https://www.countryneedspeople.org.au/what_are_indigenous_rangers">https://www.countryneedspeople.org.au/what_are_indigenous_rangers</a></li> <li>• <a href="#">Values of marine parks   Australian Marine Parks (parksaustralia.gov.au)</a></li> <li>• <a href="#">Joint management in the Kimberley - Google My Maps</a></li> <li>• <a href="#">Joint management in the south-west Kimberley and Pilbara - Google My Maps</a></li> </ul>
Commercial fishing (licence holders, fisheries, associations/councils) and recreational fishing associations	The following data sources were used to determine potentially relevant commercial and recreational fishers and associated organisations: <ul style="list-style-type: none"> <li>• Use of Fishery GIS layers to determine overlapping Commonwealth, State and Territory fishery management areas.</li> <li>• Request to Department of Primary Industries and Regional Development – Fisheries Branch for licence holder details.</li> <li>• Request to Department of Industry, Tourism and Trade - Fisheries Division for licence holder details.</li> <li>• Request to the Australian Fishery Management Authority (AFMA) for licence holder details.</li> <li>• AFMA list of fishing industry associations <a href="#">Petroleum industry consultation with the commercial fishing industry   Australian Fisheries Management Authority (afma.gov.au)</a>.</li> <li>• Fisheries Research Development Commission list of commercial fisheries related organisations, industry councils, recreational fishing organisations (<a href="#">Useful links   FRDC</a>).</li> </ul>
Businesses	The following data sources were used to determine potentially relevant Chambers of Commerce’s, fishing charters and tourism operators: <ul style="list-style-type: none"> <li>• Operator data previously obtained by INPEX.</li> <li>• Google Maps.</li> </ul>
Oil and gas or greenhouse gas titleholders	The following data sources were used to determine potentially relevant oil and gas or greenhouse gas titleholders: <ul style="list-style-type: none"> <li>• National Offshore Petroleum Titles Administrator (NOPTA) title search and use of interactive map (<a href="https://public.neats.nopta.gov.au/Map">https://public.neats.nopta.gov.au/Map</a>).</li> <li>• Australian Securities &amp; Investments Commission (<a href="#">ASIC Home   ASIC</a>).</li> </ul>
Environmental organisations (non-government)	The following data source was used to determine potentially relevant environmental organisations: <ul style="list-style-type: none"> <li>• Google search for those with an active interest in areas of WA and the NT.</li> </ul>

## Activity description

The environment team member responsible for the development of the referral submission engages with the relevant INPEX project teams to define the activity description applicable to the proposed activity. The activity description includes as much quantified information as practicable, including the scope and extent of the activity, timing, duration, and location. This is designed to provide an understanding of the nature and scale of the activity with respect to emissions, discharges, wastes and how these activities may interact with the receiving environment.

The activity description is used to help provide context to the workshop attendees and provides information on types of activities, management controls in place, duration and timing/schedule to help ascertain stakeholder interest during the life cycle of the Project.

## Description of the existing environment

Understanding the environmental values of the area a project is proposed to be undertaken in is integral to informing what may be important to stakeholders. During a workshop, various information sources are used to identify potential values applicable to those that may have functions or activities that overlap with proposed project activities and therefore may be important stakeholders. Information sources include, but are not limited, to the following:

- EPBC Act Protected Matters Search Tool (Department of Climate Change, Energy, the Environment and Water (DCCEEW))
- Relevant marine park, national park, park/reserve management plans published by State, Territory and/or Commonwealth Departments
- Conservation Management Plans (recovery plans and advice) published by DCCEEW
- Searches of Commonwealth, State and Territory heritage registers (may include world heritage, national heritage, underwater cultural heritage databases) administered by the relevant Commonwealth, State and/or Territory Departments
- Searches of sacred sites registers administered by the relevant Commonwealth, State and/or Territory Departments
- Searches of Aboriginal land and Native Title registers administered by the relevant Commonwealth, State and/or Territory Departments including the National Native Title Tribunal Register of Claims and Determination GIS database
- Published healthy country management plans and marine park management plans that may include descriptions of cultural values
- Published ecological survey monitoring data or scientific studies (including water and sediment quality)
- Commercial fishing effort data
- Craft Tracking System (Australian Maritime Safety Authority vessel tracking data).

Further, GIS layers/mapping showing key environmental values/information will be used during the stakeholder identification workshop.

### 4.1.2 Pre-population of draft register of stakeholders

In preparation for the stakeholder identification workshop, a copy of the latest version of the INPEX register of all persons, organisations, departments, agencies or authorities is to be requested from Corporate Affairs by the environmental advisor responsible for the preparation of the primary environmental approval.

The following steps will be undertaken when preparing a new draft project register prior to the stakeholder identification workshop:

1. Create draft Stakeholder Identification Workshop Register (draft project register): Pre-populate stakeholder identification workshop with latest INPEX register of persons, organisations, departments, agencies or authorities.
2. Review the functions and activities of each person, organisation, department, agency or authority in context of the proposed project.
3. Pre-populate the draft project register with any environmental values (natural, heritage, cultural or socio-economic) as they apply to a person, organisation, department, agency or authority. Note, not all will necessarily have a value that applies.
4. Identify persons, organisations, departments, agencies or authorities, whose functions or activities are not relevant to the proposed project and include a reason for omission and lack of relevancy in the register. For example, a fishery management area that does not overlap the proposed project area would be omitted. Similarly, a government agency/authority/department with no function in relation to the activity or location of the activity would also be omitted.

## 4.2 Step 2 – Undertake stakeholder identification workshop

The workshop will utilise the inputs described in Section 4.1.1, including GIS mapping.

Workshop attendees will include relevant SMEs from across INPEX including Corporate Affairs, Environment, and Aboriginal Affairs.

The following questions and prompts are provided to help guide the discussion during the workshop:

- Does the function or activities of the person, organisation, department, agency or authority overlap the proposed project area?
- Are there any values within the project area that the person, organisation, department, agency or authority may be interested in?
- Has the person, organisation, department, agency or authority previously provided information to INPEX regarding their potential for relevancy during other consultation campaigns that is at the same location?
- Does the stakeholder have any specific information needs?

The output of the workshop is a completed register of all stakeholders that need to be consulted about the proposed project that includes a summary of the specific information needs and consultation approach.

During development of stakeholder registers for projects requiring primary environmental approvals a register is developed for consultation to be undertaken during early planning (i.e. pre-referral stage) and a preliminary stakeholder register is developed for ongoing consultation (during the development of assessment documents and throughout the life of a project).

### 4.2.1 Identification of stakeholders

The process for identifying stakeholders is presented in Figure 4-2.

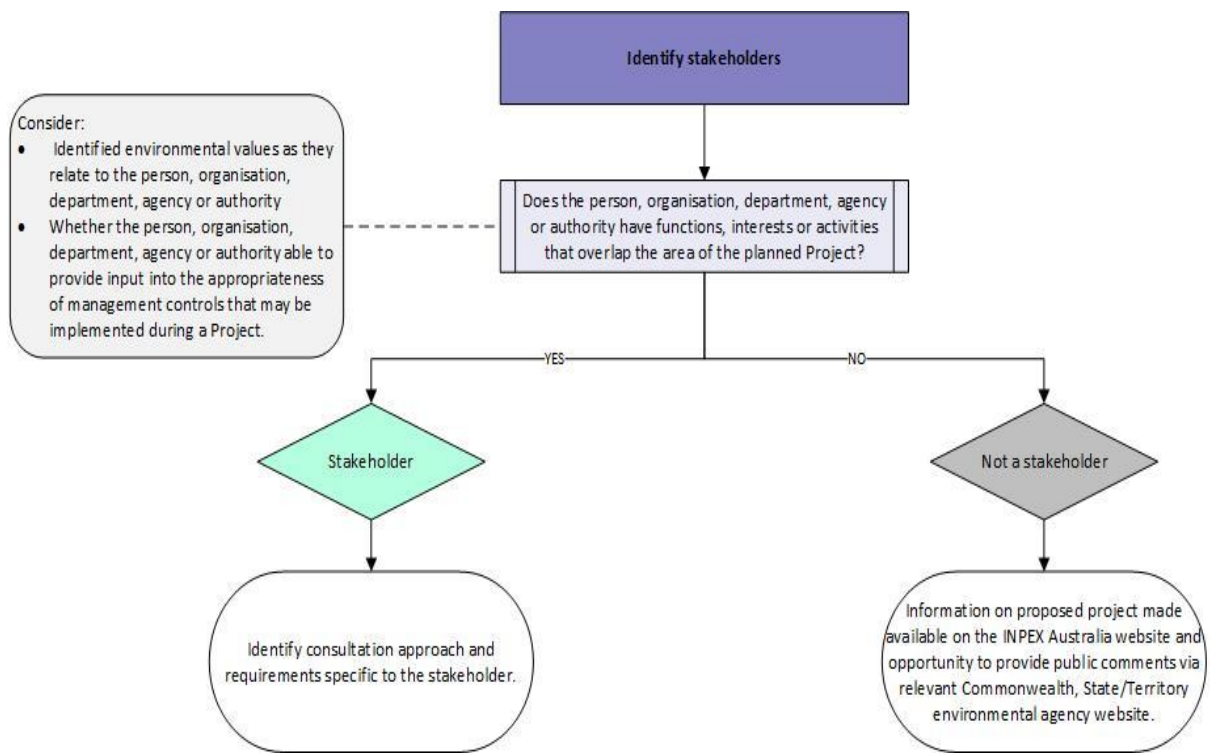
The initial screening question to establish if the person, organisation, department, agency or authority is a relevant person in relation to a proposed project, is whether they have functions or activities that overlap the project area. When considering this question during the workshop, various sources of information as described in Section 4.1.1, will be used.

Where there is overlap the project area, the person, organisation, department, agency or authority is identified as a stakeholder. Where there is no effect on a stakeholder’s functions or activities, the person, organisation, department, agency or authority is not considered further.

INPEX maintains information on proposed activities/projects on their publicly accessible website. Further, any new projects requiring Commonwealth, State/Territory primary environmental approvals are subject to public comment. As such the person, organisation, department, agency or authority has an opportunity to provide feedback during the public comment period in accordance with Commonwealth, State/Territory requirements.

It is acknowledged that through the process of consulting with identified stakeholders, additional stakeholders may be brought to INPEX’s attention. In these scenarios, newly identified stakeholders will be consulted in the manner described in this methodology. Further, the new stakeholders will be added to the INPEX stakeholder register.

Further, during the consultation process, new information may become available to inform the extent of effect of a project on a stakeholder’s functions or activities, which may result in an identified stakeholder being removed from the stakeholder register. For example, a stakeholder identified by INPEX, may advise that they do not believe they are relevant, or new information may become available which further informs/clarifies a stakeholder’s actual functions or activities which are not to the extent as previously perceived by INPEX during the initial selection process.



**Figure 4-2: Determination of stakeholders**

**4.2.2 Identify consultation requirements specific to each stakeholder**

Once a stakeholder is identified as relevant during the workshop, any specific requirements for consultation with stakeholders will be established. INPEX uses the categories and descriptors presented in Table 4-2 and Table 4-3 to ensure potential stakeholders receive appropriate consultation materials.

In addition, the appropriate method of consultation with Aboriginal and Torres Strait Islander stakeholders will be discussed and agreed. This will ensure consultation with Aboriginal and Torres Strait Islander stakeholders is effective and undertaken in a culturally appropriate manner and in accordance with the INPEX Aboriginal & Torres Strait Islander Engagement Standard (0000-A0-STD-60006).

Specific engagement tools and methods used during the course of consultation are described in Section 4.2.3.

**Table 4-2: Categorisation of stakeholders**

Category	Description
Category 1	Stakeholders whose functions or activities may be affected directly by planned Project activities. Stakeholders who have published / known requirements on how they wish to be consulted with.
Category 2	Stakeholders who may be affected by unplanned activities or stakeholders that projects may need to coordinate with during short-term/discrete Project activities.
Category 3	Other Stakeholders whose functions or activities may be indirectly impacted by Project activities.
Category 4	Broader community – new and emerging stakeholders. Community messaging to increase stakeholder awareness about a specific or short-term scope, for example, marine infrastructure upgrades associated with the activities. Targeted community engagement campaigns may be undertaken to support broader harbour user / stakeholder awareness.

**Table 4-3: Consultation strategy level**

Consultation strategy level	Description
Level A	Work with stakeholders to ensure targeted and tailored information is provided to enable an effective consultation process. This may include meetings or presentations, scheduled phone calls and sharing of specific information. As appropriate, direct engagement with Aboriginal and Torres Strait Islander relevant persons may be undertaken to co-design consultation approaches. This may also include project email campaigns, project bulletins / updates or information, access to summary website or similar.
Level B	Specific information based on known information needs (for example - published industry guidance notes or proformas outlining what information the stakeholder wishes to receive). May require ongoing, iterative consultation over an extended period of time. As appropriate, direct engagement with Aboriginal and Torres Strait Islander stakeholders may be undertaken to co-design consultation approaches. This may also include project email campaign, project bulletin / updates or information, access to summary website or similar.

Consultation strategy level	Description
Level C	Broader, higher-level consultation. This may also include project email campaigns, project bulletins / updates or information, access to summary website or similar.
Level D	Digital and print media advertisements, provision of additional information directing people to Project website.

### 4.2.3 Engagement tools and methods

INPEX uses a range of tools and methodologies to consult with stakeholders in the most appropriate manner. INPEX considers industry best practice standards and codes of conduct to assist in determining the appropriate project-specific engagement approach.

INPEX will continue to develop and respond to changing trends in stakeholder information needs throughout the life of the Project.

#### Fact sheets

Fact sheets are developed in collaboration with relevant SMEs as required to ensure there is balanced, readily accessible information available for stakeholders for specific projects. Fact sheets are emailed to identified stakeholders and made publicly available on the INPEX Australia website.

Fact sheets include an overview of the proposed works and a description of proposed project activities with a link for further information and contact information for stakeholders to provide feedback to INPEX.

#### INPEX Australia website

The INPEX Australia website, [www.inpex.com.au](http://www.inpex.com.au) (managed and maintained by Corporate Affairs Communication Team), is a primary external communication platform for INPEX Australia.

The website also showcases the Company's profile, project specific information, news and media releases, career opportunities and sustainability commitments. Stakeholders can also register for any updates, including media releases and publications via the website.

The website includes contact details for Darwin and Perth offices, as well as the [enquiries@inpex.com.au](mailto:enquiries@inpex.com.au) email for feedback.

#### Correspondence – letters, emails and phone calls

INPEX formally engages with identified stakeholders through correspondence such as letters, emails and phone calls to provide early advice about business activities and / or to offer briefings and arrange consultation. Outgoing emails include fact sheet attachment for additional information about the activities and an invitation to the stakeholder to make contact with an identified INPEX staff member for further information and to provide feedback if required.

### **Briefings (formal and informal)**

Both formal and informal briefings are regularly undertaken with stakeholders about INPEX business activities. Briefings and consultations are undertaken face to face or virtually to support the exchange of information about the proposed activities and gathering and responding to feedback from stakeholders.

Presentation slides, fact sheets and other culturally appropriate tools may be used during briefings to provide detailed descriptions of planned activities.

Project specific briefings are delivered by INPEX SMEs including relationship holders, Environment Team members, Project SMEs, Corporate Affairs and where required can be supported by a third-party cultural advisor.

### **Advertising, media and social media**

Print, radio and social media advertising may be undertaken by INPEX to create awareness about its activities, including community safety messaging, as required. INPEX social media platforms are also used to share updates and information.

INPEX may also use geo-targeted social media advertising to raise awareness in relevant communities which may be impacted by planned business activities.

Media enquiries relating to INPEX Australia activities are managed by the Communications Manager in collaboration with relevant SMEs in the business.

### **Brochures and newsletters**

Brochures, newsletters and flyers may be developed by INPEX to support or raise awareness about business scopes / activities and shared with stakeholders with a specific interest in the project activity.

### **Frequently asked questions**

A suite of anticipated Frequently Asked Questions (FAQs) may be developed in conjunction with the INPEX Environment and Corporate Affairs teams to guide consistent and factual communication with stakeholders. FAQs may also be published and updated on the INPEX website, informed by consultation and enquiries relating to the project.

### **Stakeholder notifications**

INPEX may share activity notifications regarding planned scopes of work with various stakeholders through their preferred method of communication, including email, SMS, phone call and via specific social media channels (such as residential or community platforms), if requested.

## **4.3 Step 3 – Prepare for consultation**

Prior to preparing materials for consultation, the Corporate Affairs function will review the consultation methods proposed in workshop and finalise the consultation approach for each stakeholder. Depending on the nature and scale of the Project and the complexity of consultation with stakeholders, a specific consultation strategy may be developed. Where meetings (either in-person or via other means) are required, the stakeholder would be contacted to ascertain availability.

Where consultation for several projects/proposed activities is required in a similar timeframe, an overall strategy to consultation will be considered to avoid stakeholder 'fatigue'.

#### **4.4 Step 4 – Consult with stakeholders**

Consultation commences with the issuance of initial project information to identified stakeholders, with a request that feedback is provided. Where responses are received, an assessment of merit is undertaken to determine if changes/updates are required to relevant referral/environmental assessment documents. A response is provided back to the stakeholder as to how their feedback was considered.

As described in Section 4.2.3, a number of methods of consultation may be used during consultation with stakeholders; noting that each stakeholder may require a different level of information in order to make an assessment of the possible consequences of a project on their functions or activities. Emails, factsheets, letters, and meeting invites issued will include a request for acknowledgement of receipt of the materials.

##### **4.4.1 Timing and duration of stakeholder engagement**

INPEX adopts an eight-week (40 business day) period for early consultation (pre-referral) on proposed projects. The outcomes of this may inform the preparation of an environmental referral submission.

The timing of ongoing consultation undertaken during the development of environmental approval assessment documents will be informed by the initial pre-referral consultation feedback and comments received during regulated public comment periods.

Once the proposed project activities have commenced, ongoing engagement will be undertaken to:

- Provide sufficient notice to key stakeholders prior to the commencement of upgrades, construction and commissioning works to ensure effective communication of the timing of works, and the associated safety and environmental measures;
- Provide information throughout the proposed activities, to support safe outcomes and where possible, minimise and reduce impacts to stakeholders active in the receiving environment;
- Communicate project outcomes to stakeholders, including completion of work scopes.

## 5 **BONAPARTE CCS PROJECT STAKEHOLDER REGISTERS**

Applying the process described in Section 4, stakeholders applicable to activities associated with the Bonaparte CCS Project were identified and the proposed strategic approach to consultation determined.

Stakeholders requiring early consultation on the Project (i.e. pre-referral consultation) are presented in Appendix A.

Further, a preliminary list of stakeholders likely to require ongoing consultation during the development of the environmental assessment documents and/or life of the Project are presented in Appendix B.

The registers include the following information for each selected stakeholder:

- A description of the stakeholder
- The basis for selection
- The proposed strategic approach to consultation.

## **6 STAKEHOLDER AND COMMUNITY FEEDBACK**

### **6.1 Feedback mechanisms**

INPEX maintains a 1800 community feedback line which enables the community to seek information or provide feedback about INPEX and its activities.

Community members can also contact INPEX via [enquiries@inpex.com.au](mailto:enquiries@inpex.com.au). Both the enquiries email address and community hotline are promoted on the INPEX website ([www.inpex.com.au](http://www.inpex.com.au)) and on external communications collateral such as newsletters and advertisements.

The community hotline and enquiries inbox are monitored during business hours and is supported by a Darwin-based third-party consultancy. Enquiries are elevated to the INPEX Stakeholder Engagement team for management, as required with responses developed in collaboration with relevant internal departments.

A summary report of enquiries is published annually on the INPEX Australia website and in the INPEX Corporation Sustainability report. Summary reports are also shared with the Northern Territory Environmental Protection Authority and with third-party auditors, as required.

Direct contact with INPEX can also be made via telephone, with reception numbers for the Perth and Darwin offices promoted on the INPEX website. These enquiries are managed and assessed appropriately, recorded and logged.

All enquiries are captured and assessed, and potential or emerging trends are addressed and managed as appropriate.

### **6.2 Community feedback management**

The INPEX's Community Feedback Management Procedure details the procedure for the operation and management of INPEX's 1800 community feedback line and [enquiries@inpex.com.au](mailto:enquiries@inpex.com.au) account.

The procedure includes the requirement to record details of the enquiry, including the correspondent's name and contact details and specific incident details if relevant. It also lists the procedure to manage issue-specific matters, including seeking information from internal SMEs.

INPEX's Community Grievance Management Procedure sets out the internal procedure to follow in the event an interaction cannot be resolved within the scope of the Community Feedback Management Procedure.

### **6.3 Monitoring traditional and social media**

Traditional media, including but not limited to letters and texts to the editor, can provide a gauge of community sentiment.

A number of Darwin-specific social media platforms provide a forum for informal information, feedback and comment from the wider community and will be monitored.

## **7 EVALUATION, MONITORING AND REPORTING**

### **7.1 General**

INPEX uses a range of tools to measure the effectiveness and successful implementation of this strategy. These measurement tools include:

- Recording and monitoring of direct feedback – including via the community feedback mechanisms;
- Direct feedback from stakeholders and the timely resolution of concerns;
- Engagement and feedback evaluation; and
- Media coverage and analysis.

### **7.2 Project specific monitoring and evaluation**

INPEX recognises stakeholder engagement is a continuous and adaptive process. As the Project advances:

- The stakeholder map is periodically reviewed and refined to reflect the evolution of the project.
- Modifications to the plan are implemented based on stakeholder interactions and emerging insights.
- Engagement strategies are adjusted to align with shifting priorities and project requirements.

The evaluation process is ongoing with a view to continuously improve - engagement methods and tools adjusted to provide the flexibility required to achieve best-case outcomes relevant to specific requirements.

## APPENDIX A: STAKEHOLDER REGISTER – PRE-REFERRAL CONSULTATION

Stakeholders identified for the purposes of early consultation (pre-referral) on the proposed Project are presented in Table A-1.

**Table A-1: Pre-referral stakeholders and consultation approach**

Category	Jurisdiction	Stakeholder	General description	Basis of selection	Consultation strategy	Consultation level
Government Agency	Commonwealth	Department of Infrastructure, Transport, Regional Development, Communications and the Arts (DITRDCA) - Australian Communications and Media Authority (ACMA)	ACMA is an independent statutory agency within the Department of Infrastructure, Transport, Regional Development, Communications and the Arts (DITRDCA). Assists in identifying subsea cables within vicinity of proposed activities.	Can provide locations and owners of any underwater cables which could inform survey routes, sampling, and design.	Category 1	Level B
Government Agency	Commonwealth	Department of Agriculture, Fisheries and Forestry (DAFF) - Australian Fisheries Management Authority (AFMA)	AFMA is an agency under the Department of Agriculture, Fisheries and Forestry. It is responsible for the efficient management and sustainable use of Commonwealth fish resources on behalf of the Australian community. AFMA manages and monitors commercial Commonwealth fishing to ensure Australian fish stocks and the fishing industry are viable now and in the future. AFMA does not directly license or regulate traditional Indonesian fishers who may be operating in the MoU Box. This area is managed under a bilateral agreement between the Australian and Indonesian Governments, and access is granted to Indonesian traditional fishers using non-motorised vessels and methods.	Commonwealth Fishery boundaries extend from 3nm to the EEZ within which INPEX Australia activities occur.	Category 1	Level C
Government Department	Commonwealth	Department of Climate Change, Energy, the Environment and Water (DCCEEW) - Underwater Cultural Heritage	Australian Government department responsible for regulating activities related to protected underwater cultural heritage (UCH) within Australian waters, including the Commonwealth marine area. This includes shipwrecks, aircraft, and artefacts that have been in Commonwealth waters for over 75 years. The Department is a relevant authority when an offshore activity has the potential to directly or indirectly impact protected underwater cultural heritage (see section 30(2) of the UCH Act), regardless of whether the heritage is located or unlocated.	A number of shipwrecks/plane wrecks in Darwin Harbour and in proximity to activities, are over 75 years old. The department can provide advice on heritage management and surveys.	Category 1	Level B
Government Department	Commonwealth	Department of Climate Change, Energy, the Environment and Water (DCCEEW) - Sea Dumping Section (Environment Approvals)	Australian Government department responsible for implementing the Environment Protection (Sea Dumping) Act 1981. Offshore titleholders may be required to obtain a sea dumping permit if the activity involves abandonment or toppling in place of platforms, or the relocation of waste material from the site to another location for disposal at sea during decommissioning or carbon dioxide (CO <sub>2</sub> ) sequestration.	Regulatory engagement on approvals required. This is undertaken via dedicated meetings.	Category 1	Level A
Government Department	Commonwealth	Department of Climate Change, Energy, the Environment and Water (DCCEEW) - Environmental Assessments SA & NT Section	Responsible for evaluating proposed developments and activities in South Australia and the Northern Territory to ensure they comply with national environmental legislation and protect matters of environmental significance.	Regulatory engagement on approvals required. This is undertaken via dedicated meetings.	Category1	Level B

Category	Jurisdiction	Stakeholder	General description	Basis of selection	Consultation strategy	Consultation level
Government Department	Commonwealth	Department of Agriculture, Fisheries and Forestry (DAFF) - Biosecurity and Trade Branch, Marine Pests, Vessels, Aircraft and Personnel Section	Responsible for managing the threat of biosecurity risks to Australia including marine pests, terrestrial pests, etc).	Biosecurity has potentially high consequence. Supporting vessels used during Project activities may come from overseas or interstate, piping, pipelay etc.	Category 1	Level B
Government Department	Commonwealth	Department of Agriculture, Fisheries and Forestry (DAFF) - Fisheries Branch	Responsible for ensuring management processes are implemented, such as limits on catch or effort levels, and regulations of fishing methods to manage Australia's fisheries in a sustainable way.	The department is the relevant agency where the activity has the potential to impact fishing operations in Commonwealth waters by: <ul style="list-style-type: none"> <li>- disrupting existing fishing activities</li> <li>- causing declines in valuable fisheries resources in the area</li> <li>- damaging habitat or marine ecosystems on which valuable fisheries resources depend</li> </ul>	Category 1	Level C
Government Agency	Commonwealth	Department of Climate Change, Energy, the Environment and Water (DCCEEW) - The Director of National Parks (DNP)	DNP are an agency under DCCEEW. Responsible for the management of Australian Marine Parks (AMPs), provision of advice on management of activities located in AMPs or in proximity.	G-7-AP permit and the proposed pipeline are in proximity to Oceanic Shoals Marine Park.	Category 2	Level B
Government Department	Commonwealth	Department of Defence (DoD) - Northern Command	A joint operational Australian Defence Force formation. Northern Command is responsible for the planning and conduct of operations to the north of Australia during peacetime and wartime. The Northern Command also manages the defence aspects of the multi-agency Maritime Border Command.	G-7-AP and proposed pipeline overlap the NAXA.	Category 1	Level A
Government Department	Commonwealth	Department of Defence (DoD) - Infrastructure Division, Security and Estate Group	As part of the Security and Estate Group, Infrastructure Division manages the development, maintenance and disposal of the Defence estate. Infrastructure Division also creates heritage and environment policy for all Defence properties across Australia and for Australian forces operating overseas.	G-7-AP and proposed pipeline overlap the NAXA.	Category 1	Level A
Government Authority	Commonwealth	Department of Industry, Science and Resources (DISR) - National Offshore Petroleum Titles Administrator (NOPTA)	DISR develop legislation and policy guiding energy. NOPTA is a branch under the Department.	Ongoing engagement on regulatory approvals required. This is undertaken via dedicated meetings.	Category 1	Level A
Government Agency	Commonwealth	Indigenous Land and Sea Corporation (ILSC)	The ILSC assists Indigenous people with the acquisition and management of land, salt water and fresh water so they can achieve economic, environmental, social and cultural benefits.	Courtesy - existing relationship with Ranger groups/programs operating in the project activity area.	Category 3	Level C

Category	Jurisdiction	Stakeholder	General description	Basis of selection	Consultation strategy	Consultation level
Government Department	Northern Territory	Department of Agriculture and Fisheries (DAF) - Fisheries Division, Aquatic Biosecurity Section	Management of marine pest risks to NT.	Can provide advice on biosecurity management of construction vessels that may come from other jurisdictions.	Category 1	Level B
Government Department	Northern Territory	Department of Agriculture and Fisheries (DAF) - Fisheries	Responsible for NT fisheries strategies, projects and research.	Can provide advice on commercial fishing activities and reef protection areas within the NT jurisdiction that may be impacted as part of activities.	Category 1	Level B
Government Department	Northern Territory	Department of Mining and Energy (DME)	The Department of Mining and Energy was established in September 2024 to support the Northern Territory's key resources industry, with a key focus on energy and mineral development.	Provide advice on approvals required under the Petroleum (Submerged Lands) Act 1981 (NT) to construct, test and operate CO <sub>2</sub> pipelines in coastal waters (i.e., submerged lands within the NT's jurisdiction).	Category 1	Level C
Government Department	Northern Territory	Department of Mining and Energy (DME) - Energy Division	Responsible for mineral and energy titles, explorations, geosciences information, mining authorisations and reporting. Relevant to NT jurisdiction including NT coastal waters.	Provide advice on approvals required under the Petroleum (Submerged Lands) Act 1981 (NT) to construct, test and operate CO <sub>2</sub> pipelines in coastal waters (i.e., submerged lands within the NT's jurisdiction). Regulatory engagement on approvals required. This is undertaken via dedicated meetings. Formerly DITT.	Category 1	Level A
Government Department	Northern Territory	Department of Tourism and Hospitality - Tourism NT	Promotion of the NT as a tourism destination for interstate and overseas visitors.	The Project has the potential to impact tourism activities in Darwin Harbour.	Category 1	Level C
Government Department	Northern Territory	Aboriginal Areas Protection Authority (AAPA)	Responsible for overseeing the protection of Aboriginal sacred sites on land and sea across the whole of the NT. Limited to NT waters and sacred sites in the NT.	Facilitates obtaining AAPA certificates for Project activities.	Category 1	Level A
Government Department	Northern Territory	Department of Logistics and Infrastructure (DLI) - Transport and Road Safety Division, Marine Safety Branch	The Transport Safety and Services division regulates public transport and commercial passenger vehicles, develops road safety policy, education and awareness programs, regulates marine safety and vehicle registration and driver licensing.	Manage marine safety and road safety, will provide input into the management of Project-related vessels, and vehicles throughout the projects.	Category 1	Level B
Government Department	Northern Territory	Department of Logistics and Infrastructure (DLI) - Darwin Harbourmaster	The Darwin Harbourmaster, under the Department of Logistics and Infrastructure, is responsible for managing marine operations within Darwin Harbour. This includes issuing Notices to Mariners, establishing exclusion zones, and overseeing marine traffic.	Interested in marine safety, vessel movements associated with the Project and is consulted on how INPEX intends to engage Harbour users during project activities.	Category 1	Level A

Category	Jurisdiction	Stakeholder	General description	Basis of selection	Consultation strategy	Consultation level
Government Department	Northern Territory	Department of Logistics and Infrastructure (DLI) - Middle Arm Sustainable Development Precinct (MASDP)	MASDP is a master-planned industrial hub in Darwin Harbour designed to support low-emission industries like hydrogen, carbon capture, and advanced manufacturing, while promoting economic growth and environmental sustainability.	The proposed BCCS inlet station and associated infrastructure is located on the Middle Arm peninsula and the BCCS project would be part of the broader proposed low emissions hub.	Category 2	Level A
Government Department	Northern Territory	Department of Lands, Planning and Environment (DLPE) - Heritage	The Heritage branch works with the community to conserve the unique and diverse heritage of the Northern Territory. The branch supports the Heritage Council, provides advice about heritage management, promotes heritage and encourages good conservation practice, oversees the NT Heritage Grants Program and the Rates Relief Program, and works with other government departments to conserve Government-owned heritage assets.	A number of shipwrecks/plane wrecks in Darwin Harbour and in proximity to activities, are over 75 years old. The department can provide advice on heritage management and surveys.	Category 1	Level B
Government Agency	Northern Territory	Department of Lands, Planning and Environment (DLPE) - Environment	Environment Division of the DLPE leads environmental assessment, regulation, and policy development to support sustainable development and ecological protection across the Northern Territory.	Regulatory engagement on approvals/permissions required. This is undertaken via dedicated meetings.	Category 1	Level A
Government Agency	Northern Territory	Department of Lands, Planning and Environment (DLPE) - Lands and Planning	The Agency provide land use planning and building control, government land information, land administration, and land development services.	Regulatory engagement on approvals/permissions required. This is undertaken via dedicated meetings.	Category 1	Level A
Government Department	Northern Territory	Department of Land, Planning and Environment (DLPE) – Lands and planning, Land Resources Division	Responsible for land assessment, development coordination, and weed management to support sustainable land use across the Northern Territory.	Responsible for development coordination. May have interest in proposed project activities.	Category 1	Level B
Government Department	Northern Territory	Department of Environment, Parks and Water Security (DEPWS) - Parks and Wildlife	A branch within DEPWS. Management of parks and wildlife and implementation of associated laws.	Government department responsible for managing 80 national parks and tourism in the NT.	Category 1	Level B
Government Authority	Northern Territory	Darwin Harbour Advisory Committee (DHAC)	The Darwin Harbour Advisory Committee provides advice to the Northern Territory (NT) Government through the Minister for Environment, Parks and Water Security (the Minister) on the effective management of Darwin Harbour and its catchment.	Forum to present the Project scope within Darwin Harbour to multiple relevant stakeholders.	Category 1	Level A
Government Statutory Body	Northern Territory	Land Development Corporation (LDC)	The Land Development Corporation is a Northern Territory Government statutory authority responsible for strategic land development that supports economic growth across the region.	Owner of the land / site.	Category 2	Level B
Government Department	Northern Territory	Department of Trade Business and Asian relations (DTBAR)	DTBAR drives international engagement, particularly with Asia, while supporting investment, workforce development, and the growth of small and emerging industries across the Northern Territory. Formerly Department of Industry, Tourism and Trade (DITT)	Ongoing information and engagement about investment and workforce development.	Category 2	Level B
Government Department	Northern Territory	Department of Trade Business and Asian relations (DTBAR) - Investment Territory	Investment Territory is a Northern Territory Government division that drives private sector investment by promoting strategic opportunities across industries like energy, agribusiness, tourism, and advanced manufacturing.	Project aligns with its goal of attracting major investments that drive industrial expansion, support low-emissions	Category 2	Level B

Category	Jurisdiction	Stakeholder	General description	Basis of selection	Consultation strategy	Consultation level
			Formerly Department of Industry, Tourism and Trade (DITT)	technologies, and position the Northern Territory as a global hub for sustainable energy and manufacturing.		
Government Agency	Northern Territory	NT WorkSafe	NT WorkSafe is the administrative and regulatory arm of the Northern Territory Work Health Authority, the statutory body established under the Work Health and Safety Act 2011. NT WorkSafe is responsible for the Territory-wide regulation of: <ul style="list-style-type: none"> <li>workplace health and safety</li> <li>electrical safety laws, licensing, equipment safety, notification requirements and inspections</li> <li>dangerous goods</li> </ul> rehabilitation and workers' compensation	INPEX will continue to engage about Project safety and risk mitigation to personnel during the execution phase.	Category 1	Level B
Government Department	Northern Territory	Northern Territory Police - Water Police	The division responsible for policing NT waters.	Awareness of on-water activities in Darwin Harbour.	Category 2	Level B
Government Department	Northern Territory	HMAS Coonawarra Naval Base	HMAS Coonawarra is a Royal Australian Navy base located in Darwin, Northern Territory, and is home to seven fleet units of the RAN.	Marine safety and vessel movements associated with the Project inclusive of any exclusion zones implemented to manage safety.	Category 1	Level C
Local Government Authority	Northern Territory	Tiwi Islands Regional Council	Local government area serving Tiwi Islands.	BCCS proposed pipeline route >50 kilometres from Tiwi coastline.	Category 2	Level A
Local Government Authority	Northern Territory	West Daly Local Council	Local government area serving West Daly area.	Pipeline route.	Category 2	Level C
Local Government Authority	Northern Territory	Belyuen Community Government Council	Local government provides services to the Belyuen Community which is located approximately 120km from Darwin on the Cox Peninsula.	Pipeline traverses adjacent to Cox Peninsula coastline	Category 1	Level A
Local Government Authority	Northern Territory	City of Darwin	Local government serving Darwin.	Project location.	Category 1	Level B
Local Government Authority	Northern Territory	City of Palmerston	Local government serving Palmerston.	Palmerston is a thoroughfare for majority of ILNG traffic other than Jenkins Rd.	Category 1	Level A
Local Government Authority	Northern Territory	Litchfield Council	Local government for Litchfield.	ILNG facility (where onshore activities would be undertaken) is located in the Litchfield Shire.	Category 1	Level B
Local Government Authority	Northern Territory	Wagait Shire Council	Local government area serving Wagait area.	Pipeline route, Mandorah Jetty.	Category 1	Level A

Category	Jurisdiction	Stakeholder	General description	Basis of selection	Consultation strategy	Consultation level
ATSI Representative Body	Northern Territory	Gwalwa Daraniki Association Incorporated	Aboriginal Association that represents the Kalaluk people near Darwin.	One of the three Larrakia organisations. Previously engaged during the appraisal phase. May have an invested interest in works in Darwin Harbour. Committed to keep stakeholder informed as the project developed.	Category 2	Level A
ATSI Representative Body	Northern Territory	Daly River / Port Keats Aboriginal Land Trust	Represents Traditional Owners in Daly River to the Fitzmaurice River including: <ul style="list-style-type: none"> <li>- Batjamahl</li> <li>- Marrithiyel</li> <li>- Marriamu</li> <li>- Marritjaben</li> <li>- Yederr</li> <li>- Neninh Kuy</li> <li>- Kardu Thithay Diminin</li> <li>- Rak Kirnmu</li> <li>- Yek Maninh</li> <li>- Yek Nangu</li> <li>- Kardu Kura Thipmam</li> </ul>	Previously engaged during the appraisal phase. Located adjacent to G-7-AP. Commitment to keep stakeholder informed as the project developed.	Category 2	Level B
ATSI Community	Northern Territory	Delissaville/Wagait/Larrakia Aboriginal Land Trust	Represent Traditional Owners south of Bynoe Harbour to the north bank of the Daly River, including the Delissaville / Wagait/ Larrakia Aboriginal Land Trust, and La Belle Downs and Litchfield Stations. <ul style="list-style-type: none"> <li>- Mak Mak Maranunggu (White Eagle and Black Eagle)</li> <li>- Some Belyuen Group members, particularly Wadjjiyn and Marritheyel</li> <li>- Bulgul Land and Sea Rangers</li> <li>- Bulgul Community (Wadjjiyn and Kiyuk)</li> </ul>	Previously engaged during the appraisal phase. Located adjacent to G-7-AP. Commitment to keep stakeholder informed as the project developed.	Category 1	Level B
ATSI Representative Body	Northern Territory	Larrakia Development Corporation (LDC)	Responsible for creating economic opportunities for all Larrakia people through the creation and operation of sustainable businesses models, and the maintenance of the Larrakia Development Trust. Located near Darwin.	Representative of Larrakia peoples, Traditional Owners of the Darwin area. Previously engaged during the appraisal phase. Interest in works in Darwin Harbour and Middle Arm. Committed to ongoing consultation and engagement as Project develops.	Category 1	Level A
ATSI Representative Body	Northern Territory	Larrakia Nation Aboriginal Corporation (LNAC)	Set up in 1997 through the Northern Land Council to provide a corporate identity for Larrakia people to uphold Native Title claims. Cover social, community and local roles. Located near Darwin.	Representative of Larrakia peoples, Traditional Owners of the Darwin area. Previously engaged during the appraisal phase. Interest in works in Darwin Harbour and Middle Arm. Committed to ongoing consultation and engagement as Project develops.	Category 1	Level A

Category	Jurisdiction	Stakeholder	General description	Basis of selection	Consultation strategy	Consultation level
ATSI Representative Body	Northern Territory	Northern Australian Indigenous Sea Alliance (NAISMA)	The North Australian Indigenous Land and Sea Management Alliance Ltd (NAISMA) is an Indigenous led not-for-profit company operating across north Australia. Assists Indigenous people manage their country sustainably for future generations. Offices based in Darwin.	Connections to indigenous ranger groups across Australia. INPEX has committed to keeping NAISMA informed about activities.	Category 3	Level C
ATSI Representative Body	Northern Territory	Northern Land Council (NLC)	An independent statutory authority of the Commonwealth responsible for assisting Aboriginal NT to acquire and manage their traditional lands and seas.  The NLC is also the Native title Representative Body for the northern region - including the Tiwi Islands and Groote Eylandt. This includes land that does not fall under ALRA, such as crown land or other lands in towns, national parks, and land vested in the Northern Territory Land Corporation, pastoral leases and offshore areas.  Relevant person in own right. Also represents the following groups: Jaminjung, Mak Mak Maranunggu, Wadiginy people, Finnis River people, Batjamalh, Emmiyangal, Mendheyangal peoples, Wulna, Konbudj, Limilngan people), Amarak and Ngamarak people, Iwaidja, Bulgul Land and Sea Rangers and Kenbi Rangers.	Existing relationship with NLC (working level), engaged during the appraisal process of G-7-AP.  Requested to be kept updated on the Project, specifically has requested INPEX share information with a range of NLC personnel.	Category 1	Level A
ATSI Representative Body	Northern Territory	Thamarrurr Development Corporation (TDC)	TDC is an organisation that represents the three major cultural groups Wangka, Lirrga and Tjanpa comprising 20 clan groups, including 11 saltwater clans, as above.  Thamarrurr Land and Sea Rangers	Previously engaged during the appraisal phase. Located adjacent to G-7-AP. Commitment to keep stakeholder informed as the project developed.	Category 2	Level B
ATSI Representative Body	Northern Territory	Tiwi Land Council (TLC)	The TLC represents all Tiwi people in the protection of land, sea, and environment, and supports sustainable economic development to improve Tiwi lives through employment, income, education and health opportunities.	Previously engaged during the appraisal phase. Located adjacent to G-7-AP. Commitment to keep stakeholder informed as the project developed.	Category 2	Level B
ATSI Representative Body	Western Australia	Balanggarra Aboriginal Corporation RNTBC (BAC)	Holds on trust the native title rights and interests of Balanggarra Traditional Owners.  The claim area covers country in the north Kimberley including the Wyndham township, Kalumburu, Oombulgurri and Forrest River Aboriginal reserves, Carson River pastoral lease, parts of the Drysdale River National Park and unallocated Crown land at Cape Londonderry, Carson River and the Cambridge Gulf Coast.	Previously engaged during the appraisal phase. Located adjacent to G-7-AP. Commitment to keep stakeholder informed as the project developed.	Category 2	Level B
ATSI Representative Body	Commonwealth	Sea Country Alliance (SCA)	The purpose of the SCA, through the collective actions of its members, is to strive to enhance the capacity of First Nations in Australia and elsewhere in the world to achieve self-determination through the ability to wholly control all aspects of their rights and interests, both economic and cultural, in Sea Country. Members include Aboriginal and Torres Strait Island organisations and the Native Title Council.	New and emerging stakeholder. Recently established following issues with consultation between industry/First Nation groups in the offshore environment. May develop guidelines for a protocol for consultation with First Nations peoples.	Category 3	Level C

Category	Jurisdiction	Stakeholder	General description	Basis of selection	Consultation strategy	Consultation level
ATSI Representative Body	Northern Territory	Kenbi Aboriginal Land Trust	Cox Peninsula from Charles Point in the north to Bynoe Harbour in the south, including the islands and reefs to the west of the Cox Peninsula. Including the following groups: - Tommy Lyons Group descendants. - Kenbi Rangers - Belyuen Group: members of the following language groups resident at Belyuen community. 1. Wadjigiyn 2. Kiyuk 3. Menthayenggal (Mentha) 4. Amiyenggal (Ami) 5. Marriamu 6. Marritjaben	Previously engaged during the appraisal phase. Located adjacent to G-7-AP. Commitment to keep stakeholder informed as the project developed.	Category 1	Level A
ATSI Ranger Group	Northern Territory	Kenbi Ranger Group	Indigenous team managing land and sea country near Darwin, focusing on conservation and cultural heritage.	Active ranger group in Darwin Harbour. Long standing relationship with the ranger group. Previous engagement via LNAC, as key marine stakeholder and project partner INPEX will engage ranger group as projects progress.	Category 1	Level A
ATSI Representative Body	Northern Territory	Top End Aboriginal Coastal Alliance Inc (TEACA)	TEACA is an independent collection of senior Aboriginal leaders who have come together to identify those people who are recognised by clan groups and communities as having cultural authority and who can speak for sea country and coastal estates. Source: <a href="https://www.publish.csiro.au/ep/acc/EP24416/EP24416_AC.pdf">https://www.publish.csiro.au/ep/acc/EP24416/EP24416_AC.pdf</a>	Coastal community representation.	Category 1	Level B
Business	Commonwealth	Sun Cable	Developers of Australia Asia Power Link which includes subsea infrastructure from Darwin to Asia.	Interface engagement.	Category 1	Level B
Business	Northern Territory	Chamber of Commerce NT (CCNT)	Peak industry body that represents and supports businesses in the Northern Territory.	Peak industry body, INPEX is a member. Opportunity to engage with Chamber membership.	Category 1	Level C
Business	Northern Territory	Tiwi Resources Pty Ltd Limited	Purpose is to gain economic opportunities for the Tiwi People from the use of their land, including income generated from such activities as mining, carbon, fishing and forestry. 100% Tiwi owned.	Early engagement, BCCS surveys and activities are adjacent to area of operation.	Category 2	Level C
Business	Northern Territory	Tourism Top End Visitor Information Centre	A non-government, not-for-profit organisation that supports business members to promote tourism.	Social Impact Assessment (SIA) will determine potential impacts to tourism, early engagement required.	Category 3	Level C
Business	Northern Territory	Darwin Port (Darwin Port Operations Pty Ltd)	Responsible for the operations of commercial wharf at East Arm and Fort Hill, movement and management of commercial vessels within Darwin Port limits.	Port operator, potential marine activity impacts and interface	Category 1	Level A

Category	Jurisdiction	Stakeholder	General description	Basis of selection	Consultation strategy	Consultation level
Business	Northern Territory	Northern Territory Indigenous Business Network (NTIBN)	Represents a group of Indigenous businesses working together to create more opportunity and a greater potential for Indigenous business in the NT.	Peak ATSI business body, INPEX is a member. Potential to share information with members.	Category 3	Level C
Business	Western Australia	Vocus Communications	Own and manage the national subsea fibre network between Darwin and Port Hedland.	Own and manage the national subsea fibre network between Darwin and Port Hedland.	Category 1	Level B
Business	Northern Territory	Santos	Major Australian energy company supplying oil, gas, and LNG with global operations that holds CO <sub>2</sub> storage permits in the Bonaparte Basin and is developing a CCS hub near Darwin.	Pipeline, access agreements, crossings, traffic management.	Category 1	Level B
Business	Northern Territory	Ship Lift Facility - Darwin Harbour Infrastructure Projects Infrastructure NT	The Northern Territory Government is delivering the Darwin Ship Lift Facility to establish Darwin as a thriving maritime services industry hub.	Harbour interface.	Category 2	Level B
Business	Northern Territory	Mandora Jetty upgrades - Darwin Harbour Infrastructure Projects Infrastructure NT	A Northern Territory Government infrastructure project improving marine access and facilities at Mandorah.	Harbour interface.	Category 2	Level B
Business	Northern Territory	Industry Capability Network (ICN) NT	A network connecting local businesses to major project supply chains in the Northern Territory, supporting regional industry participation.	ICN gateway opportunities for local businesses.	Category 3	Level B
Business	Northern Territory	Energy Club NT	The Energy Club NT Board unites industry leaders to promote responsible energy development and collaboration in Northern Australia.	Ongoing engagement opportunities through member briefings, local business opportunities. INPEX is a partner with ECNT (foundation member).	Category 3	Level B
Business	Northern Territory	Master Builders NT	The peak industry body representing and supporting the NT's building and construction sector.	Early engagement for workforce requirements.	Category 3	Level B
Business	Northern Territory	Property Council NT	Advocates for property industry growth and investment across the Northern Territory.	Early engagement, mitigating short term impacts to the property market.	Category 3	Level B
Business	Northern Territory	Darwin Waterfront Corporation	Manages and promotes the Darwin Waterfront Precinct as a hub for living, business, and events.	It is anticipated that some activities will be visible from Darwin Waterfront precinct which is a tourism and event location.	Category 3	Level B
Business	Northern Territory	NT Airports	Operates major airports in the Northern Territory, including Darwin and Alice Springs, under long-term leases.	Early engagement to discuss potential requirements for additional flights to minimise disruption to locals and tourism.	Category 1	Level B

Category	Jurisdiction	Stakeholder	General description	Basis of selection	Consultation strategy	Consultation level
Business	Northern Territory	Hospitality NT	The leading industry body for hospitality in the NT, supporting tourism and hospitality businesses.	Early engagement to discuss workforce numbers, rostering and transport management (if required) - i.e. venues may potentially see increase in patrons with short term supplementary workforce (usually 6:1 roster, leading to increased patronage on the day off).	Category 1	Level B
Fishing - Commercial	Commonwealth	Australian Southern Bluefin Tuna Industry Association (ASBTIA)	The Australian Southern Bluefin Tuna Industry Association (ASBTIA) represents the Australian SBT industry.	Industry representative for Southern Bluefin Tuna fishery license holders.	Category 2	Level C
Fishing - Commercial	Commonwealth	NPF Industry Pty Ltd (Industry association)	Acts as the representative body for NPF trawler operators, processors and marketers, which spans from Cape York (Qld) to Cape Londonderry (WA).	Industry body, not licence holders directly.	Category 1	Level B
Fishing - Commercial	Commonwealth	Tuna Australia (Industry association)	Industry association representing members of the Eastern and Western Tuna and Billfish and Western Skipjack fisheries of Australia.	Industry representatives for members of Eastern and Western Tuna and Billfish and Western skipjack fisheries of Australia.	Category 2	Level C
Fishing – Recreational	Northern Territory	Amateur Fishermen's Association of the Northern Territory (AFANT)	Peak body for recreational fishing in the NT.	Key representative body for fishing activities in the NT.	Category 1	Level B
Fishing - Commercial	Northern Territory	Northern Territory Seafood Council (NTSC)	The peak representative body for the wild catch, aquaculture and trader/processor seafood sectors in the Northern Territory.	Main point of contact for NT fishers.	Category 1	Level B
Fishing – Recreational	Northern Territory	Palmerston Game Fishing Club	Club representing recreational fishers (via membership) in Palmerston NT.	Recreational fishing representatives.	Category 1	Level B
Fishing - Commercial	Western Australia	Western Australian Fishing Industry Council (WAFIC)	The peak industry body representing professional fishing, pearling and aquaculture enterprises, processors and exporters in Western Australia.	For information sharing.	Category 2	Level C
Fishing - Commercial	Northern Territory	Demersal (Multigear) Fishery – Licence Holder: Australia Based Seafoods	Licence holder - permit right over licence area.	Requested to be kept up to date as the project progressed.	Category 1	Level A
Fishing – Recreational	Northern Territory	Darwin Game Fishing Club	Community-based amateur fishing club in the Northern Territory, known for hosting major events like the Barra Classic and NT Billfish Classic.	For information sharing.	Category 1	Level B
Fishing – Commercial	Western Australia	Paspaley	Commercial pearling lease holder based on Kimberley coast (e.g. Kuri Bay, Vansitart Bay, Osborne Islands).	For information sharing.	Category 3	Level B

Category	Jurisdiction	Stakeholder	General description	Basis of selection	Consultation strategy	Consultation level
Oil & Gas - Titleholder	Western Australia	Eni Energy Bonaparte Pty Ltd (JV contact)	Titleholder of NT/P88, NT/RL1, WA-548-P and WA-6-R	Do not overlap area of planned activities but titleholder of offshore petroleum or GHG permit within proximity to G-7-AP.	Category 2	Level C
Oil & Gas - Titleholder	Northern Territory	MBS Oil Pty Ltd	Titleholder of permit EP214	Do not overlap area of planned activities but titleholder of offshore petroleum or GHG permit within proximity to G-7-AP	Category 2	Level C
Oil & Gas - Titleholder	Western Australia	Santos Offshore Pty Ltd	Titleholder of permit G-11-AP	Do not overlap area of planned activities but titleholder of offshore petroleum or GHG permit within proximity to G-7-AP.	Category 2	Level C
Oil & Gas - Titleholder	Western Australia	Bonaparte Gas & Oil Pty Ltd	Titleholder of permit WA-27-R	Do not overlap area of planned activities but titleholder of offshore petroleum or GHG permit within proximity to G-7-AP.	Category 2	Level C
Oil & Gas - Titleholder	Northern Territory	Santos Pipeline Duplication Team	Duplication Project Darwin Harbour.	Project area overlaps nearshore pipeline corridor.	Category 1	Level A
eNGO	Northern Territory	The Environment Centre NT (ECNT)	The Environment Centre NT (ECNT) is a peak not-for-profit community sector environment organisation in the NT.	Potential interest in activities occurring onshore.	Category 3	Level C
eNGO	Northern Territory	Top End Coasts	Keep Top End Coasts Healthy works with the community, stakeholders and government to safeguard the health of Top End coasts to secure the lifestyle, culture and fishing is maintained. Consists of an alliance of environment groups including the Australian Marine Conservation Society, the Pew Charitable Trusts and the Environment Centre of the Northern Territory.	Potential interest in activities or project more broadly.	Category 3	Level C

## APPENDIX B: STAKEHOLDER REGISTER – ONGOING CONSULTATION

A preliminary list of stakeholders likely to require ongoing consultation during the development of the environmental assessment documents (post-referral) and/or over life of the Project are presented in Table B-1.

**Table B-1: Post-referral stakeholders and consultation approach**

Category	Jurisdiction	Stakeholder	General description	Basis of selection	Consultation strategy	Consultation level
Government Department	Commonwealth	Department of Agriculture, Fisheries and Forestry (DAFF) - Biosecurity and Trade Branch, Marine Pests, Vessels, Aircraft and Personnel Section	Responsible for managing the threat of biosecurity risks to Australia including marine pests, terrestrial pests, etc).	Biosecurity has potentially high consequence. Vessels used during activities are likely to come from overseas, module imports, etc.	Category 1	Level B
Government Agency	Commonwealth	Indigenous Land and Sea Corporation (ILSC)	The ILSC assists Indigenous people with the acquisition and management of land, salt water and fresh water so they can achieve economic, environmental, social and cultural benefits.	Courtesy - existing relationship with Ranger groups/programs.	Category 3	Level C
Government Department	Northern Territory	Department of Logistics and Infrastructure (DLI) - Middle Arm Sustainable Development Precinct (MASDP)	MASDP is a master-planned industrial hub in Darwin Harbour designed to support low-emission industries like hydrogen, carbon capture, and advanced manufacturing, while promoting economic growth and environmental sustainability	The proposed BCCS inlet station and associated infrastructure is located on the Middle Arm peninsula and the BCCS project would be part of the broader proposed low emissions hub.	Category 2	Level A
Government Agency	Northern Territory	Department of Lands, Planning and Environment (DLPE) - Environment	Environment Division of the DLPE leads environmental assessment, regulation, and policy development to support sustainable development and ecological protection across the Northern Territory.	Regulatory engagement on approvals/permissions required. This is undertaken via dedicated meetings.	Category 1	Level A
Government Authority	Northern Territory	Darwin Harbour Advisory Committee (DHAC)	The Darwin Harbour Advisory Committee provides advice to the Northern Territory (NT) Government through the Minister for Environment, Parks and Water Security (the Minister) on the effective management of Darwin Harbour and its catchment.	Forum to present the Project scope within Darwin Harbour to multiple stakeholders.	Category 1	Level A
Government Statutory Body	Northern Territory	Land Development Corporation (LDC)	The Land Development Corporation is a Northern Territory Government statutory authority responsible for strategic land development that supports economic growth across the region.	Partner in MASDP.	Category 2	Level B
Government Department	Northern Territory	Department of Trade Business and Asian relations (DTBAR) - Investment Territory	Investment Territory is a Northern Territory Government division that drives private sector investment by promoting strategic opportunities across industries like energy, agribusiness, tourism, and advanced manufacturing. Formerly Department of Industry, Tourism and Trade (DITT)	Ongoing engagement and updates.	Category 2	Level B

Category	Jurisdiction	Stakeholder	General description	Basis of selection	Consultation strategy	Consultation level
Government Department	Northern Territory	Department of Trade, Business and Asian Relations (DTBAR)	DTBAR drives international engagement, particularly with Asia, while supporting investment, workforce development, and the growth of small and emerging industries across the Northern Territory. Formerly Department of Industry, Tourism and Trade (DITT)	Ongoing information and engagement.	Category 2	Level C
Local Government Authority	Northern Territory	Tiwi Islands Regional Council	Local government area serving Tiwi Islands.	BCCS proposed pipeline route >50 kilometres from Tiwi coastline.	Category 2	Level A
Local Government Authority	Northern Territory	West Daly Local Council	Local government area serving West Daly area.	Previously engaged during appraisal EP consultation with commitment to keep informed.	Category 2	Level C
Local Government Authority	Northern Territory	Belyuen Community Government Council	Local government provides services to the Belyuen Community which is located approximately 120km from Darwin on the Cox Peninsula.	Previously engaged during appraisal EP consultation with commitment to keep informed.	Category 1	Level A
Local Government Authority	Northern Territory	City of Palmerston	Local government serving Palmerston.	Palmerston is a thoroughfare for majority of ILNG traffic other than Jenkins Rd. SIA to provide further understanding on potential impacts to the LGA.	Category 1	Level A
Local Government Authority	Northern Territory	Litchfield Council	Local government for Litchfield.	LGA for inlet station	Category 1	Level B
Local Government Authority	Northern Territory	City of Darwin	Local government serving Darwin.	ILNG is visible from Darwin central business district (CBD), SIA to provide further understanding on potential impacts to the LGA.	Category 1	Level B
Local Government Authority	Northern Territory	Wagait Shire Council	Local government area serving Wagait area.	Harbour activities visible from Wagait Beach. Interface required due to new infrastructure projects taking place with Mandorah Jetty and boat ramp as well as maintenance of existing facilities. Potential impacts to the ferry from Cox Peninsula to Darwin for local residents. SIA to provide further understanding on potential impacts to LGA.	Category 1	Level B
ATSI Representative Body	Northern Territory	Gwalwa Daraniki Association Incorporated	Aboriginal Association that represents the Kalaluk people near Darwin.	INPEX acknowledges the important role Aboriginal and Torres Strait Islander peoples continue to play in the development of our business in Australia. Previously engaged during the appraisal phase with commitment to ongoing engagement and consultation throughout the life of the Project.	Category 2	Level A

Category	Jurisdiction	Stakeholder	General description	Basis of selection	Consultation strategy	Consultation level
ATSI Representative Body	Northern Territory	Daly River / Port Keats Aboriginal Land Trust	Represents Traditional Owners in Daly River to the Fitzmaurice River including: <ul style="list-style-type: none"> <li>- Batjamahl</li> <li>- Marrithiyel</li> <li>- Marriamu</li> <li>- Marritjaben</li> <li>- Yederr</li> <li>- Neninh Kuy</li> <li>- Kardu Thithay Diminin</li> <li>- Rak Kirmmu</li> <li>- Yek Maninh</li> <li>- Yek Nangu</li> <li>- Kardu Kura Thipmam</li> </ul>	INPEX acknowledges the important role Aboriginal and Torres Strait Islander peoples continue to play in the development of our business in Australia. Previously engaged during the appraisal phase. Located adjacent to G-7-AP. Commitment to keep stakeholder informed as the project developed.	Category 2	Level B
ATSI Community	Northern Territory	Delissaville/Wagait/Larrakia Aboriginal Land Trust	Represent Traditional Owners south of Bynoe Harbour to the north bank of the Daly River, including the Delissaville / Wagait/ Larrakia Aboriginal Land Trust, and La Belle Downs and Litchfield Stations. <ul style="list-style-type: none"> <li>- Mak Mak Maranunggu (White Eagle and Black Eagle)</li> <li>- Some Belyuen Group members, particularly Wadjjiyn and Marritheyel</li> <li>- Bulgul Land and Sea Rangers</li> <li>- Bulgul Community (Wadjjiyn and Kiyuk)</li> </ul>	INPEX acknowledges the important role Aboriginal and Torres Strait Islander peoples continue to play in the development of our business in Australia. Previously engaged during the appraisal phase. Located adjacent to G-7-AP. Commitment to keep stakeholder informed as the project developed.	Category 1	Level B
ATSI Representative Body	Northern Territory	Larrakia Development Corporation (LDC)	Responsible for creating economic opportunities for all Larrakia people through the creation and operation of sustainable businesses models, and the maintenance of the Larrakia Development Trust. Located near Darwin.	INPEX acknowledges the important role Aboriginal and Torres Strait Islander peoples continue to play in the development of our business in Australia. Previously engaged during the appraisal phase with commitment to ongoing engagement and consultation throughout the life of the Project.	Category 1	Level A
ATSI Representative Body	Northern Territory	Larrakia Nation Aboriginal Corporation (LNAC)	Set up in 1997 through the Northern Land Council to provide a corporate identity for Larrakia people to uphold Native Title claims. Cover social, community and local roles. Located near Darwin.	INPEX acknowledges the important role Aboriginal and Torres Strait Islander peoples continue to play in the development of our business in Australia. Previously engaged during the appraisal phase with commitment to ongoing engagement and consultation throughout the life of the Project.	Category 1	Level A
ATSI Representative Body	Northern Territory	Northern Australian Indigenous Sea Alliance (NAILSMA)	The North Australian Indigenous Land and Sea Management Alliance Ltd (NAILSMA) is an Indigenous led not-for-profit company operating across north Australia. Assists Indigenous people manage their country sustainably for future generations. Offices based in Darwin.	INPEX acknowledges the important role Aboriginal and Torres Strait Islander peoples continue to play in the development of our business in Australia. Previously engaged during the appraisal phase. Stakeholder has requested to be kept informed.	Category 3	Level C

Category	Jurisdiction	Stakeholder	General description	Basis of selection	Consultation strategy	Consultation level
ATSI Representative Body	Northern Territory	Northern Land Council (NLC)	<p>An independent statutory authority of the Commonwealth responsible for assisting Aboriginal NT to acquire and manage their traditional lands and seas.</p> <p>The NLC is also the Native title Representative Body for the northern region - including the Tiwi Islands and Groote Eylandt. This includes land that does not fall under ALRA, such as crown land or other lands in towns, national parks, and land vested in the Northern Territory Land Corporation, pastoral leases and offshore areas.</p> <p>Relevant person in own right. Also represents the following groups: Jaminjung, Mak Mak Maranunggu, Wadiginy people, Finnis River people, Batjamalh, Emmiyangal, Mendheyangal peoples, Wulna, Konbudj, Limilngan people), Amarak and Ngamarak people, Iwaidja, Bulgul Land and Sea Rangers and Kenbi Rangers.</p>	INPEX acknowledges the important role Aboriginal and Torres Strait Islander peoples continue to play in the development of our business in Australia. Previously engaged during the appraisal phase with commitment to ongoing engagement and consultation throughout the life of the Project.	Category 1	Level A
ATSI Representative Body	Northern Territory	Thamarrurr Development Corporation (TDC)	TDC is an organisation that represents the three major cultural groups Wangka, Lirrga and Tjanpa comprising 20 clan groups, including 11 saltwater clans, as above. Thamarrurr Land and Sea Rangers	INPEX acknowledges the important role Aboriginal and Torres Strait Islander peoples continue to play in the development of our business in Australia. Previously engaged during the appraisal phase. Located adjacent to G-7-AP. Commitment to keep stakeholder informed as the project developed. May be relevant for secondary approvals / EPs.	Category 2	Level B
ATSI Representative Body	Northern Territory	Tiwi Land Council (TLC)	The TLC represents all Tiwi people in the protection of land, sea, and environment, and supports sustainable economic development to improve Tiwi lives through employment, income, education and health opportunities.	INPEX acknowledges the important role Aboriginal and Torres Strait Islander peoples continue to play in the development of our business in Australia. Previously engaged during the appraisal phase with commitment to ongoing engagement and consultation throughout the life of the Project. May be relevant for secondary approvals / EPs.	Category 2	Level B
ATSI Representative Body	Western Australia	Balanggarra Aboriginal Corporation RNTBC (BAC)	Holds on trust the native title rights and interests of Balanggarra Traditional Owners. The claim area covers country in the north Kimberley including the Wyndham township, Kalumburu, Oombulgurri and Forrest River Aboriginal reserves, Carson River pastoral lease, parts of the Drysdale River National Park and unallocated Crown land at Cape Londonderry, Carson River and the Cambridge Gulf Coast.	Previously engaged during the appraisal phase. Located adjacent to G-7-AP. Commitment to keep stakeholder informed as the project developed. Due to oil spill trajectory - offshore related activities.	Category 2	Level B

Category	Jurisdiction	Stakeholder	General description	Basis of selection	Consultation strategy	Consultation level
ATSI Representative Body	Northern Territory	Kenbi Aboriginal Land Trust	Cox Peninsula from Charles Point in the north to Bynoe Harbour in the south, including the islands and reefs to the west of the Cox Peninsula. Including the following groups: - Tommy Lyons Group descendants. - Kenbi Rangers - Belyuen Group: members of the following language groups resident at Belyuen community. 1. Wadjigiyn 2. Kiyuk 3. Menthayenggal (Mentha) 4. Amiyenggal (Ami) 5. Marriamu 6. Marritjaben	INPEX acknowledges the important role Aboriginal and Torres Strait Islander peoples continue to play in the development of our business in Australia. Previously engaged during the appraisal phase with commitment to keep stakeholder informed as the project develops.	Category 1	Level A
ATSI Ranger Group	Northern Territory	Kenbi Ranger Group	Indigenous team managing land and sea country near Darwin, focusing on conservation and cultural heritage.	INPEX acknowledges the important role Aboriginal and Torres Strait Islander peoples continue to play in the development of our business in Australia. Previously engaged during the appraisal phase with commitment to ongoing engagement and consultation throughout the life of the Project. Active ranger group in proposed activity area.	Category 1	Level A
ATSI Representative Body	Northern Territory	Top End Aboriginal Coastal Alliance Inc (TEACA)	TEACA is an independent collection of senior Aboriginal leaders who have come together to identify those people who are recognised by their clan groups and communities as having cultural authority and who can speak for sea country and coastal estates.	INPEX acknowledges the important role Aboriginal and Torres Strait Islander peoples continue to play in the development of our business in Australia. Previously engaged during the appraisal phase with commitment to keep stakeholder informed as the project develops in particular with TEACA's relevant coastal community representatives.	Category 1	Level B
Business	Commonwealth	Sun Cable	Developers of Australia Asia Power Link which includes subsea infrastructure from Darwin to Asia.	Interface engagement.	Category 1	Level B
Business	Northern Territory	Chamber of Commerce NT (CCNT)	Peak industry body that represents and supports businesses in the Northern Territory.	Peak industry body, INPEX is a member. Opportunity to engage with Chamber membership.	Category 1	Level C
Business	Northern Territory	Tiwi Resources Pty Ltd Limited	Purpose is to gain economic opportunities for the Tiwi People from the use of their land, including income generated from such activities as mining, carbon, fishing and forestry. 100% Tiwi owned.	Early engagement, BCCS surveys and activities are adjacent to area of operation.	Category 2	Level C
Business	Northern Territory	Tourism Top End Visitor Information Centre	A non-government, not-for-profit organisation that supports business members to promote tourism.	SIA will determine potential impacts to tourism, early engagement required.	Category 3	Level C

Category	Jurisdiction	Stakeholder	General description	Basis of selection	Consultation strategy	Consultation level
Business	Northern Territory	Darwin Port (Darwin Port Operations Pty Ltd)	Responsible for the operations of commercial wharf at East Arm and Fort Hill, movement and management of commercial vessels within Darwin Port limits.	Port operator, potential marine activity impacts and interface (dredging, module arrivals etc).	Category 1	Level A
Business	Northern Territory	Northern Territory Indigenous Business Network (NTIBN)	Represents a group of Indigenous businesses working together to create more opportunity and a greater potential for Indigenous business in the NT.	Peak ATSI business body, INPEX is a member. Potential to share information with members.	Category 3	Level C
Business	Western Australia	Vocus Communications	Own and manage the national subsea fibre network between Darwin and Port Hedland.	Own and manage the national subsea fibre network between Darwin and Port Hedland.	Category 1	Level B
Business	Northern Territory	Santos	Major Australian energy company supplying oil, gas, and LNG with global operations that holds CO <sub>2</sub> storage permits in the Bonaparte Basin and is developing a CCS hub near Darwin.	Pipeline, access agreements, crossings, traffic management.	Category 1	Level B
Business	Northern Territory	Ship Lift Facility - Darwin Harbour Infrastructure Projects Infrastructure NT	The Northern Territory Government is delivering the Darwin Ship Lift Facility to establish Darwin as a thriving maritime services industry hub.	Harbour interface.	Category 2	Level B
Business	Northern Territory	Mandora Jetty upgrades - Darwin Harbour Infrastructure Projects Infrastructure NT	A Northern Territory Government infrastructure project improving marine access and facilities at Mandorah.	Harbour interface.	Category 2	Level B
Business	Northern Territory	Industry Capability Network (ICN) NT	A network connecting local businesses to major project supply chains in the Northern Territory, supporting regional industry participation.	ICN gateway opportunities for local businesses	Category 3	Level B
Business	Northern Territory	Energy Club NT	The Energy Club NT Board unites industry leaders to promote responsible energy development and collaboration in Northern Australia.	Member briefings, local business opportunities. INPEX is a partner with ECNT (foundation member).	Category 3	Level B
Business	Northern Territory	Master Builders NT	The peak industry body representing and supporting the NT's building and construction sector.	Early engagement for workforce requirements.	Category 3	Level B
Business	Northern Territory	Property Council NT	Advocates for property industry growth and investment across the Northern Territory.	Early engagement, mitigating short term impacts to the property market.	Category 3	Level B
Business	Northern Territory	Darwin Waterfront Corporation	Manages and promotes the Darwin Waterfront Precinct as a hub for living, business, and events.	It is anticipated that some activities will be visible from Darwin Waterfront precinct which is a tourism and event location.	Category 3	Level B
Business	Northern Territory	NT Airports	Operates major airports in the Northern Territory, including Darwin and Alice Springs, under long-term leases.	Early engagement to discuss potential requirements for additional flights to minimise disruption to locals and tourism.	Category 1	Level B

Category	Jurisdiction	Stakeholder	General description	Basis of selection	Consultation strategy	Consultation level
Business	Northern Territory	Hospitality NT	The leading industry body for hospitality in the NT, supporting tourism and hospitality businesses.	Early engagement to discuss workforce numbers, rostering and transport management (if required) - i.e. venues may potentially see increase in patrons with short term supplementary workforce (usually 6:1 roster, leading to increased patronage on the day off).	Category 1	Level B
Fishing - Commercial	Commonwealth	Australian Southern Bluefin Tuna Industry Association (ASBTIA)	The Australian Southern Bluefin Tuna Industry Association (ASBTIA) represents the Australian SBT industry.	Industry representative for Southern Bluefin Tuna fishery license holders.	Category 2	Level C
Fishing - Commercial	Commonwealth	NPF Industry Pty Ltd (Industry association)	Acts as the representative body for NPF trawler operators, processors and marketers, which spans from Cape York (Qld) to Cape Londonderry (WA).	Industry body, not licence holders directly.	Category 1	Level B
Fishing - Commercial	Commonwealth	Tuna Australia (Industry association)	Industry association representing members of the Eastern and Western Tuna and Billfish and Western Skipjack fisheries of Australia.	Industry representatives for members of Eastern and Western Tuna and Billfish and Western skipjack fisheries of Australia.	Category 2	Level C
Fishing – Recreational	Northern Territory	Amateur Fishermen’s Association of the Northern Territory (AFANT)	Peak body for recreational fishing in the NT.	Key representative body for fishing activities in the NT.	Category 1	Level B
Fishing - Commercial	Northern Territory	Northern Territory Seafood Council (NTSC)	The peak representative body for the wild catch, aquaculture and trader/processor seafood sectors in the Northern Territory.	Main point of contact for NT fishers.	Category 1	Level B
Fishing – Recreational	Northern Territory	Palmerston Game Fishing Club	Club representing recreational fishers (via membership) in Palmerston NT.	Recreational fishing representatives.	Category 1	Level B
Fishing - Commercial	Western Australia	Western Australian Fishing Industry Council (WAFIC)	The peak industry body representing professional fishing, pearling and aquaculture enterprises, processors and exporters in Western Australia.	For information.	Category 2	Level C
Fishing - Commercial	Northern Territory	Demersal (Multigear) Fishery - Licence Holder: Australia Based Seafoods	Licence holder - permit right over licence area.	Requested to be kept up to date as the project progressed.	Category 1	Level A
Fishing – Recreational	Northern Territory	Darwin Game Fishing Club	Community-based amateur fishing club in the Northern Territory, known for hosting major events like the Barra Classic and NT Billfish Classic.	For information sharing.	Category 1	Level B
Fishing – Commercial	Western Australia	Paspaley	Commercial pearling lease holder based on Kimberley coast (e.g. Kuri Bay, Vansitart Bay, Osborne Islands).	For information sharing.	Category 3	Level B
Oil & Gas - Titleholder	Western Australia	Eni Energy Bonaparte Pty Ltd (JV contact)	Titleholder of NT/P88, NT/RL1, WA-548-P and WA-6-R	Do not overlap area of planned activities but titleholder of offshore petroleum or GHG permit within proximity to G-7-AP.	Category 2	Level C

Category	Jurisdiction	Stakeholder	General description	Basis of selection	Consultation strategy	Consultation level
Oil & Gas - Titleholder	Northern Territory	MBS Oil Pty Ltd	Titleholder of permit EP214	Do not overlap area of planned activities but titleholder of offshore petroleum or GHG permit within proximity to G-7-AP	Category 2	Level C
Oil & Gas - Titleholder	Western Australia	Santos Offshore Pty Ltd	Titleholder of permit G-11-AP	Do not overlap area of planned activities but titleholder of offshore petroleum or GHG permit within proximity to G-7-AP.	Category 2	Level C
Oil & Gas - Titleholder	Western Australia	Bonaparte Gas & Oil Pty Ltd	Titleholder of permit WA-27-R	Do not overlap area of planned activities but titleholder of offshore petroleum or GHG permit within proximity to G-7-AP.	Category 2	Level C
Oil & Gas - Titleholder	Northern Territory	Santos Pipeline Duplication Team	Duplication Project Darwin Harbour.	Project area overlaps nearshore pipeline corridor.	Category 1	Level A
eNGO	Northern Territory	The Environment Centre NT (ECNT)	The Environment Centre NT (ECNT) is a peak not-for-profit community sector environment organisation in the NT.	ECNT has been briefed about the Project pre-referral submission and has expressed an interest in receiving updates as the project progresses.	Category 3	Level C
eNGO	Northern Territory	Top End Coasts	Keep Top End Coasts Healthy works with the community, stakeholders and government to safeguard the health of Top End coasts to secure the lifestyle, culture and fishing is maintained. Consists of an alliance of environment groups including the Australian Marine Conservation Society, the Pew Charitable Trusts and the Environment Centre of the Northern Territory.	Potential interest in activities or project more broadly.	Category 3	Level C