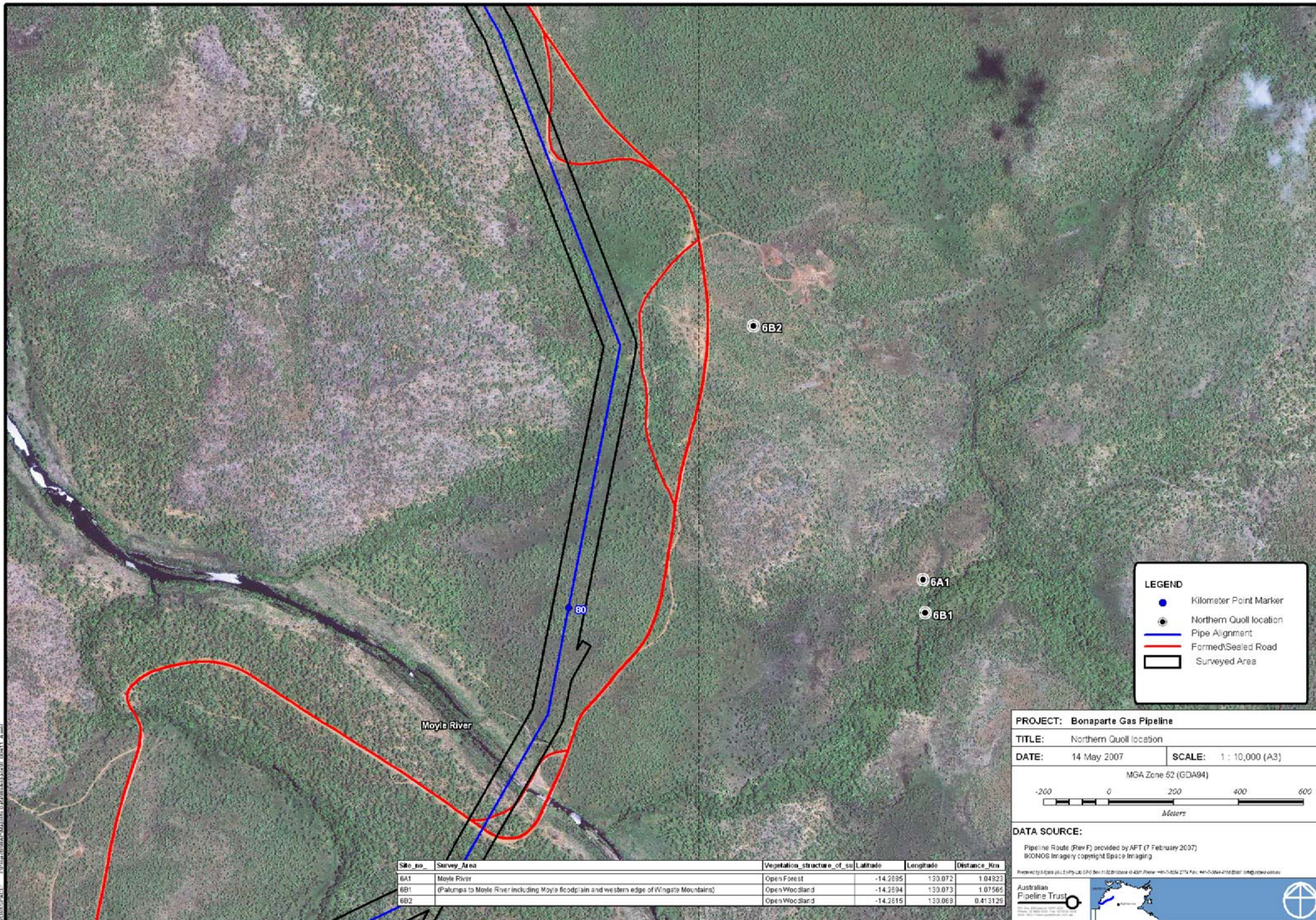


**SUPPLEMENT APPENDIX 5 – LOCATIONS OF
NORTHERN QUOLLS RECORDED IN 2004 BY
ECOZ**



LEGEND

- Kilometer Point Marker
- Northern Quoll location
- Pipe Alignment
- Formed/Sealed Road
- Surveyed Area

PROJECT: Bonaparte Gas Pipeline

TITLE: Northern Quoll location

DATE: 14 May 2007 **SCALE:** 1 : 10,000 (A3)

MGA Zone 52 (GDA94)

-200 0 200 400 600

Meters

DATA SOURCE:

Pipeline Route (Rev F) provided by APT (7 February 2007)
 IKONOS imagery copyright Space Imaging

Prepared by G. Spas (g.spas@apt.com.au) & B. Stone (b.stone@apt.com.au) from: HCS-1026 2754 File: HCS-1026-4702-B001 (img) (07/05/07)

Australian Pipeline Trust

Site_no	Survey Area	Vegetation structure of su	Latitude	Longitude	Distance_Km
6A1	Moyie River	Open Forest	-14.2895	133.072	1.04823
6B1	(Palumpa to Moyie River including Moyie floodplain and western edge of Wingate Mountains)	Open Woodland	-14.2894	133.073	1.07562
6B2		Open Woodland	-14.2815	133.069	0.413126

1:10,000 (A3) scale map. All rights reserved. No part of this publication may be reproduced, stored in a retrieval system, or transmitted, in any form or by any means, electronic, mechanical, photocopying, recording, or by any information storage and retrieval system, without the prior written permission of the copyright owner.

1:10,000 (A3) scale map. All rights reserved. No part of this publication may be reproduced, stored in a retrieval system, or transmitted, in any form or by any means, electronic, mechanical, photocopying, recording, or by any information storage and retrieval system, without the prior written permission of the copyright owner.