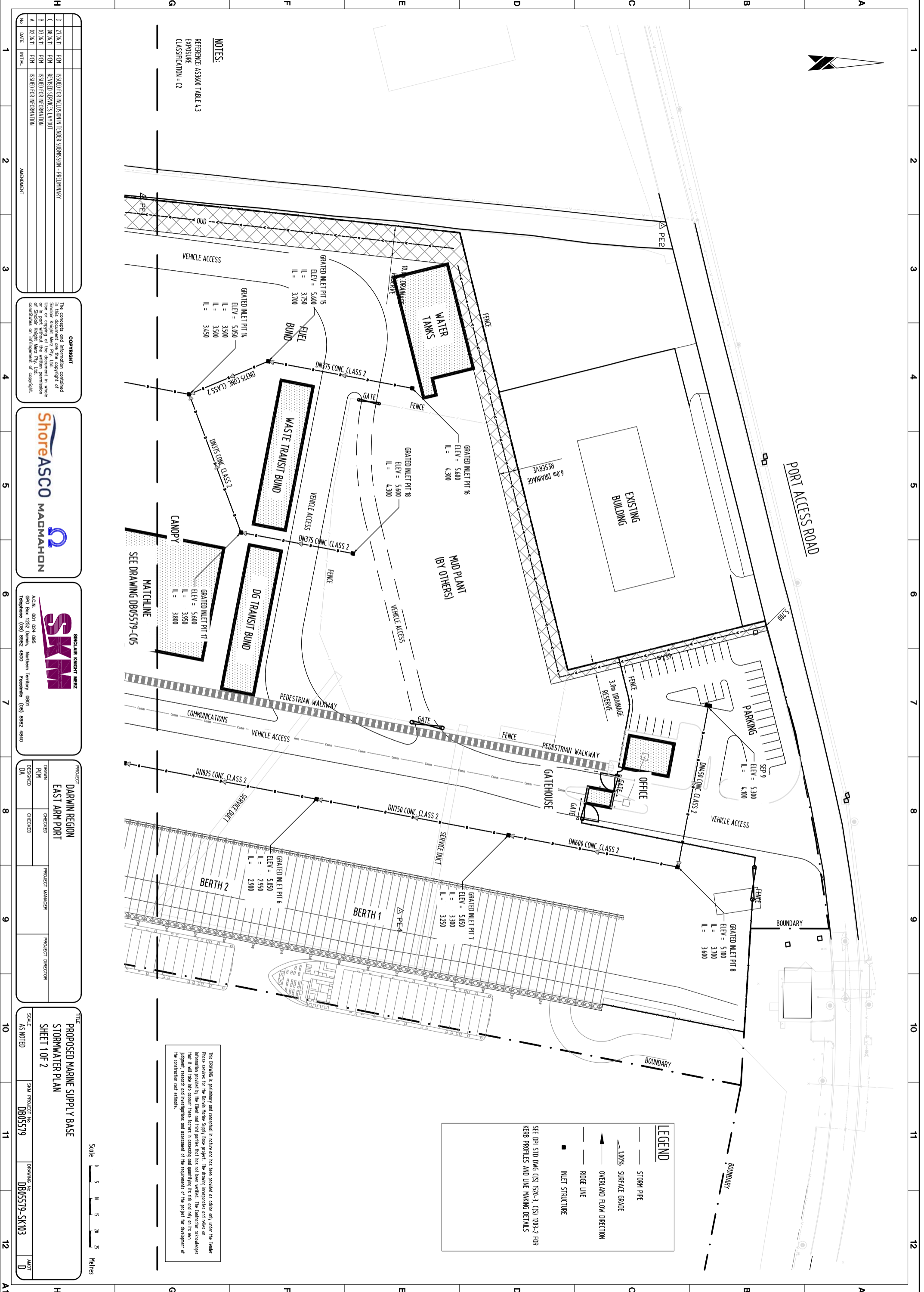


Appendix F Marine Supply Base Concept Stormwater Management Plan

F



NOTES:
 REFERENCE: ASS300 TABLE 4.3
 EXPOSURE
 CLASSIFICATION = C2

No.	DATE	INITIAL	AMENDMENT
A	02.06.11	PCN	ISSUED FOR INFORMATION
B	03.06.11	PCN	ISSUED FOR INFORMATION
C	08.06.11	PCN	ISSUED FOR INFORMATION
D	27.06.11	PCN	ISSUED FOR INFORMATION

COPYRIGHT
 The concepts and information contained in this drawing are the copyright of Sinclair Knight Merz Pty. Ltd. Use or copying of the document in whole or in part without the written permission constitutes an infringement of copyright.



PROJECT		DARWIN REGION EAST ARM PORT	
DESIGNED	DA	CHECKED	
PROJECT MANAGER		PROJECT DIRECTOR	

TITLE		PROPOSED MARINE SUPPLY BASE STORMWATER PLAN SHEET 1 OF 2	
SCALE	AS NOTED	SKM PROJECT NO.	DB05579
DRAWING NO.	DB05579-SK103	AWT	D

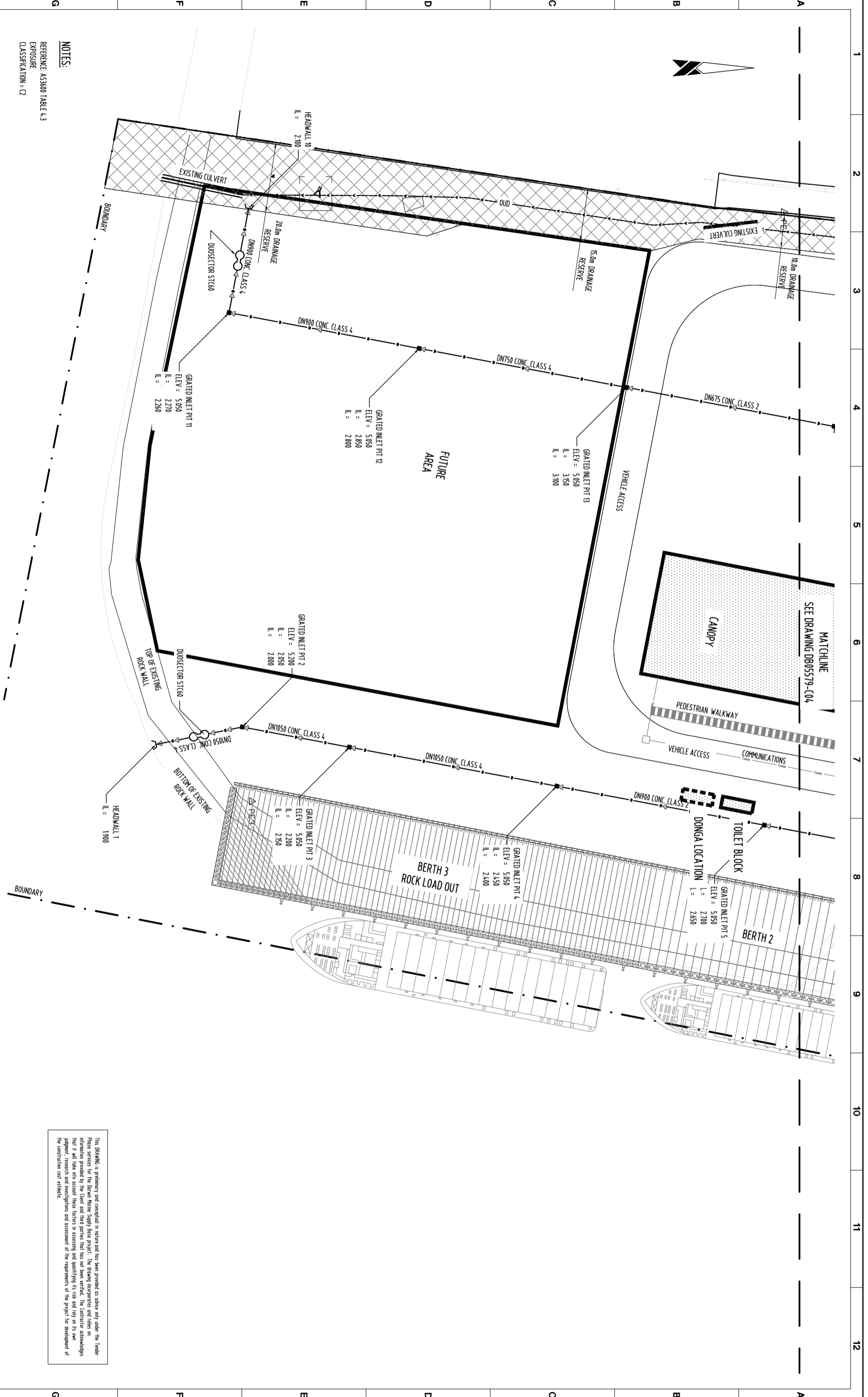


The DRAWING is preliminary and conceptual in nature and has been provided as advice only under the Tender Process for the Darwin Marine Supply Base. The drawings are for information only and do not constitute a contract. The contractor acknowledges that it will take into account these factors in assessing and quantifying its risk and rely on its own judgment, research and investigations and assessment of the requirements of the project for development of the construction cost estimate.

LEGEND

- STORM PIPE
- SURFACE GRADE
- OVERLAND FLOW DIRECTION
- RIDGE LINE
- INLET STRUCTURE

SEE PRI STD DWG (SI) 1520-3, (SI) 1203-2 FOR KERB PROFILES AND LINE MAKING DETAILS



NOTES:
 REFERENCE: AS3600 TABLE 4.3
 EXPOSURE
 CLASSIFICATION = C2

No.	DATE	INITIAL	AMENDMENT
D	27.06.11	PCN	ISSUED FOR INCLUSION IN TENDER SUBMISSION - PRELIMINARY
C	08.06.11	PCN	REVISED SERVICES LAYOUT
B	03.06.11	PCN	ISSUED FOR INFORMATION
A	02.06.11	PCN	ISSUED FOR INFORMATION

COPYRIGHT
 The concepts and information contained herein are the property of Sinclair Knight Merz Pty. Ltd. and are not to be used or copied in whole or in part without the written permission of Sinclair Knight Merz Pty. Ltd. Any reproduction or infringement of copyright is prohibited.



PROJECT		PROJECT MANAGER		PROJECT DIRECTOR	
DRAWN	DA	DESIGNED	DA	CHECKED	DA
DARWIN REGION EAST ARM PORT					

TITLE		SCALE	
PROPOSED MARINE SUPPLY BASE STORMWATER PLAN SHEET 2 OF 2		AS NOTED	
SKM PROJECT NO.	DB05579	DRAWING NO.	DB05579-SK104
		AWGT	D



The DRAWING is preliminary and conceptual in nature and has been provided as advice only under the Tender Process for the Darwin Marine Supply Base. The drawings are for information only and do not constitute a contract. The contractor acknowledges that it will take into account these factors in assessing and quantifying its risk and rely on its own judgment, research and investigations and assessment of the requirements of the project for development of the construction cost estimate.