

# APPENDIX J

NT NRM Snapshot  
June 2011





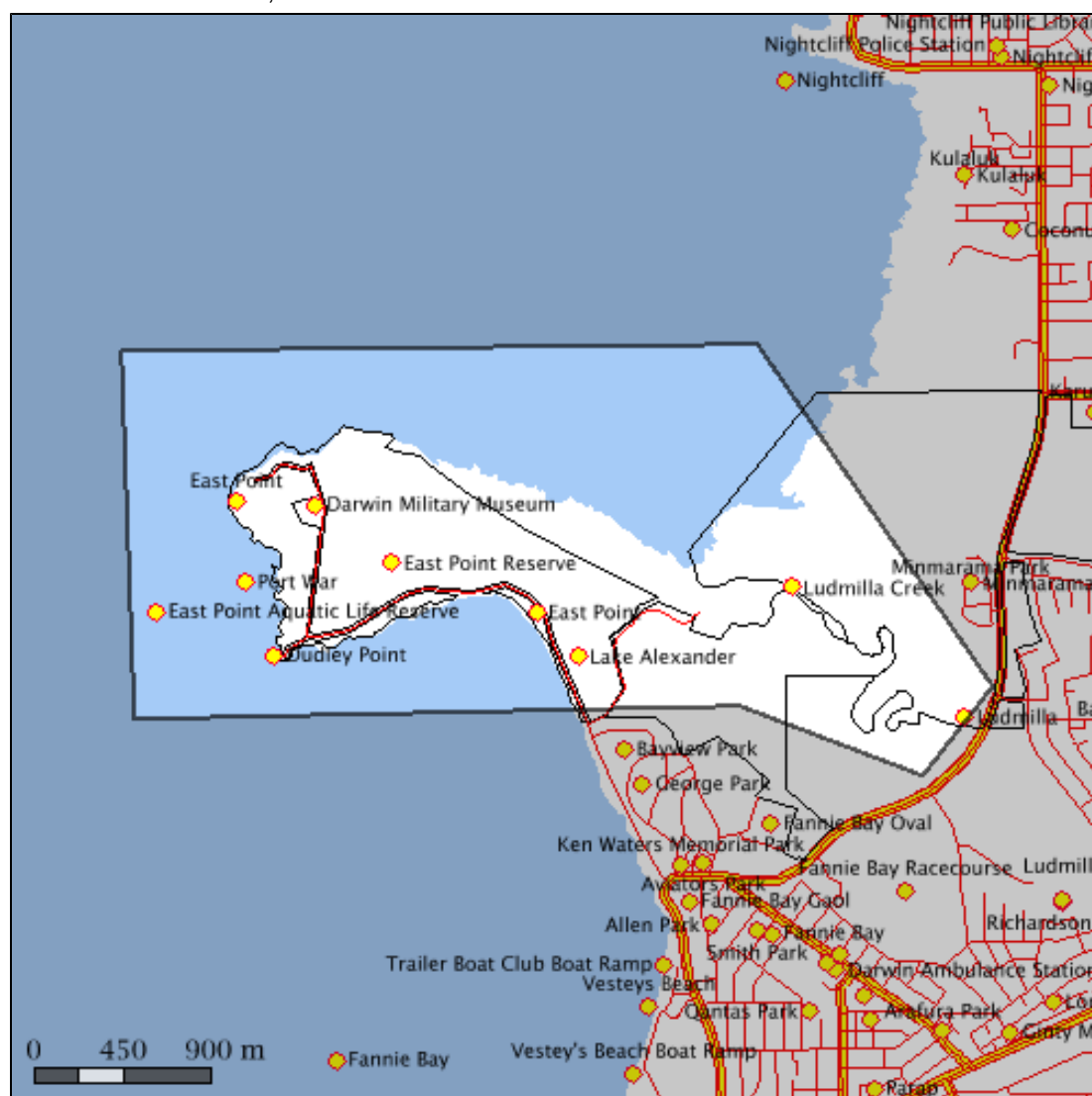
## East Point, Darwin

East Point, Darwin encompasses an area of 6.89 sq km extending from 12 deg 24.0 min to 12 deg 25.0 min S and 130 deg 48.0 min to 130 deg 51.0 min E.

East Point, Darwin is located in the Darwin Coastal, bioregion(s)



Location of East Point, Darwin



# East Point, Darwin Climate

The closest long-term weather station is DARWIN POST OFFICE (12 deg 24.0 min S, 130.8E) 3 km W of the center of selected area

## Statistics

Mean max temp (deg C)  
 Mean min temp (deg C)  
 Average rainfall (mm)  
 Average days of rain

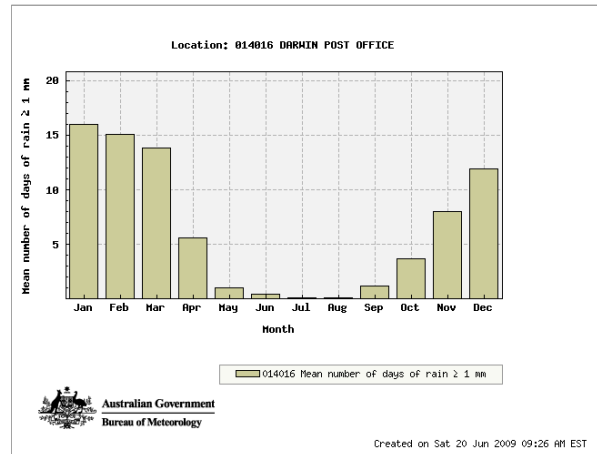
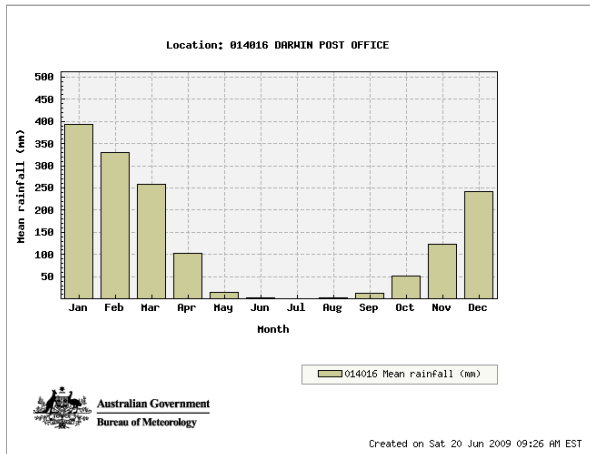
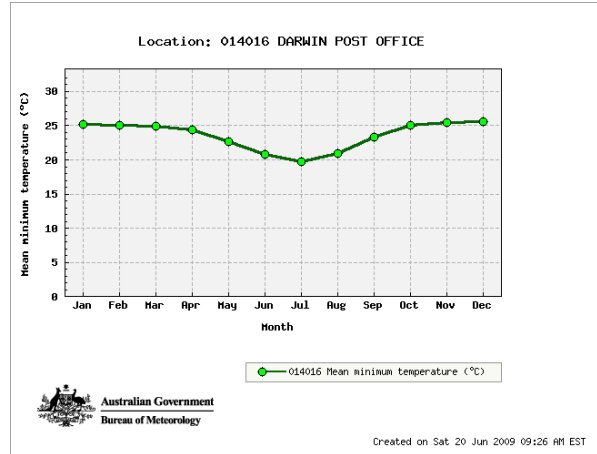
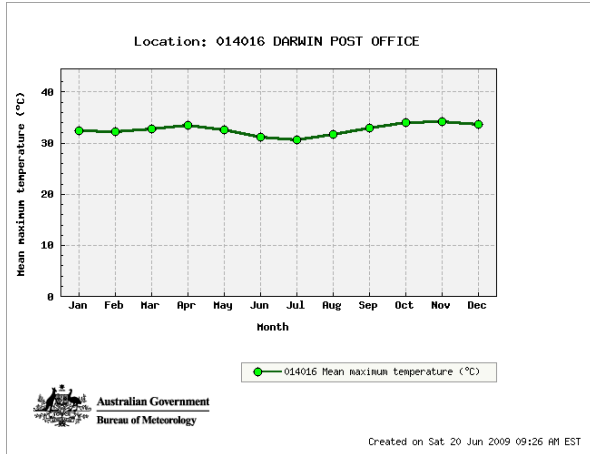
## Annual Values

32.6  
 23.6  
 1539.0  
 76.9

## Years of record

60  
 60  
 87  
 86

Climate summaries from Bureau of Meteorology ([www.bom.gov.au](http://www.bom.gov.au))



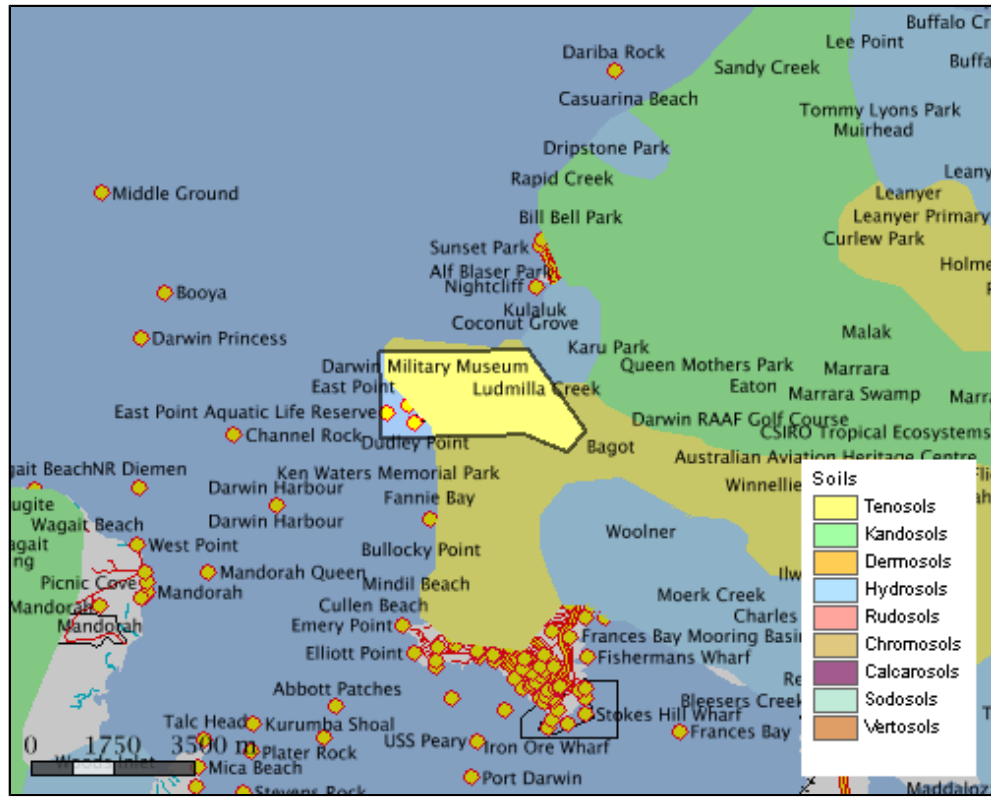
# East Point, Darwin Soils

Soil Types

Area of soil types (Northcote Factual Key)

Selected area is too small to produce reliable statistics

## Soil Types



Soils 1:2M Layer is a copy of the NT portion (1:2,000,000 scale dataset) of the CSIRO Atlas of Australian Soils - K.H. Northcote et al. Data scale: 1:2,000,000 ANZLIC Identifier: 2DBC771205D06B6E040CD9B0F274EFE  
 More details: Go to [www.nt.gov.au/nreta/nretamaps/](http://www.nt.gov.au/nreta/nretamaps/) and enter the ANZLIC identifier in the Spatial Data Search

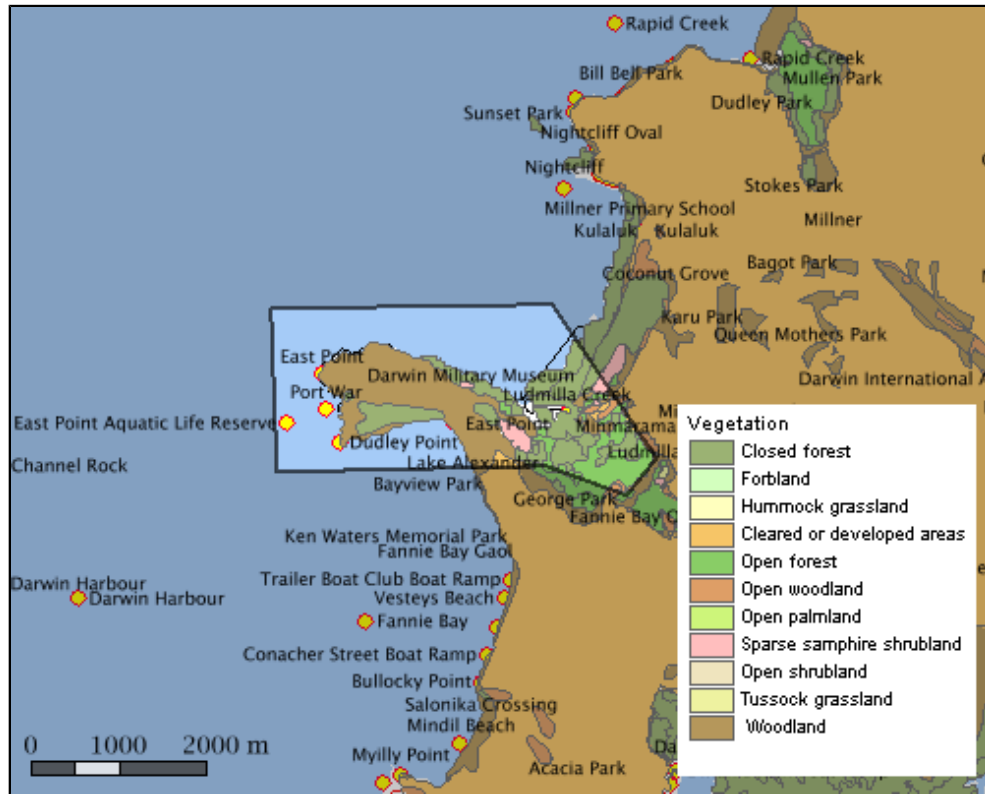
# East Point, Darwin Vegetation

Vegetation Communities

Area of vegetation communities

Selected area is too small to produce reliable statistics

## Vegetation Communities



The NVIS 2005 Layer is compiled from a number of vegetation and land unit survey maps that were recorded and re-attributed for the National Vegetation Information System (NVIS)  
Data scale variable depending on location. ANZLIC Identifier:2DBC771207006B6E040CD9B0F274EFE  
More details:Go to [www.nt.gov.au/nreta/nretamaps/](http://www.nt.gov.au/nreta/nretamaps/) and enter the ANZLIC identifier in the Spatial Data Search

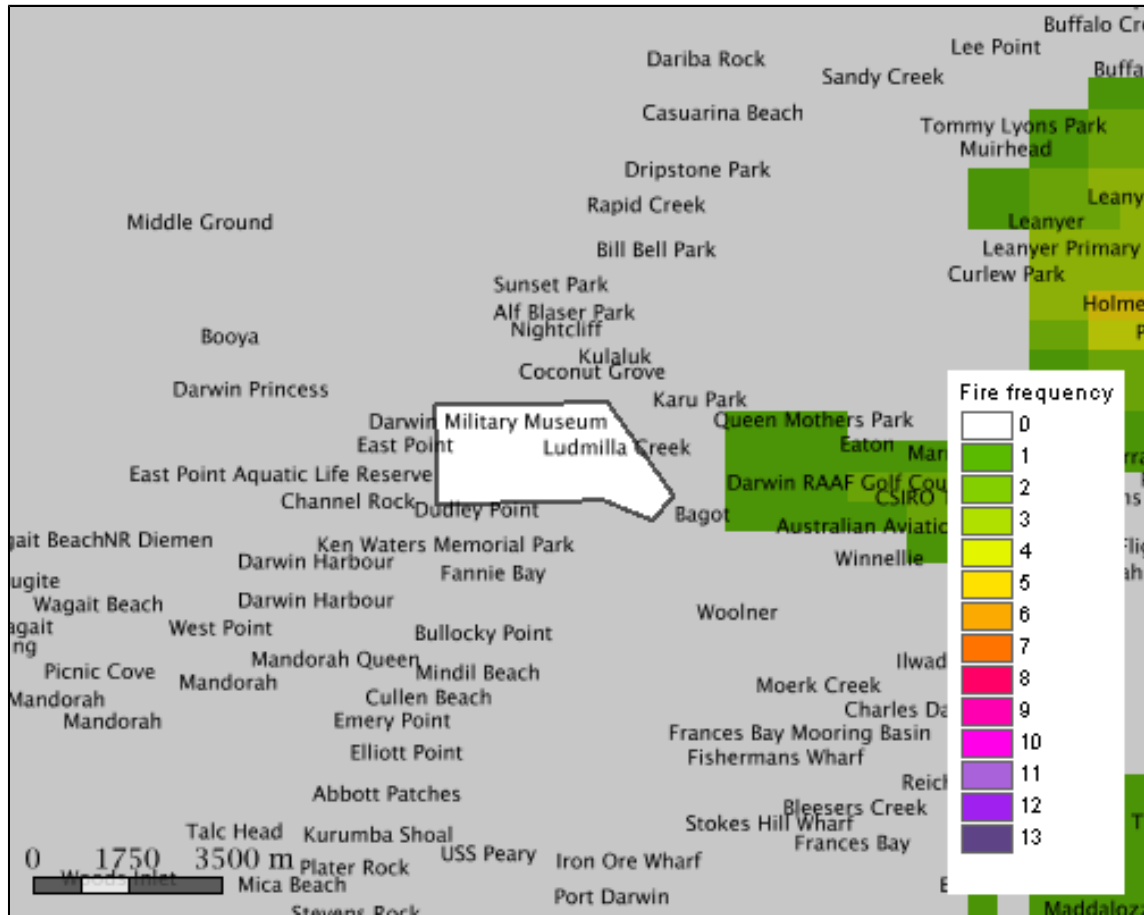
# East Point, Darwin Fire History

Years burnt 1997-2009

and area burnt in each category

Selected area is too small to produce reliable statistics

Years burnt 1997-2009



The fire frequency (1km) Layer is derived from satellite imagery sourced from the Advanced Very High Resolution Radiometer (AVHRR) on NOAA satellites  
 Spatial Resolution: 1.1m x 1.1km pixels (at Nadir) Extent: whole of NT



# East Point, Darwin Threatened Species

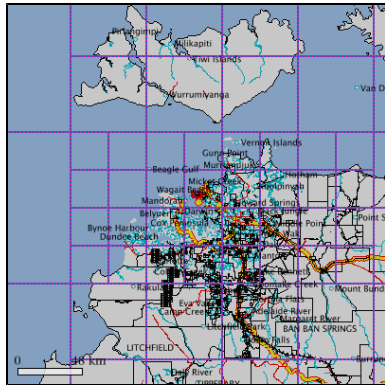
Threatened species recorded in the grid cell(s) in which East Point, Darwin occurs

Group	Common Name	Scientific Name	NT Status	National Status	ID
Cycads	Armstrong's Cycad	<i>Cycas armstrongii</i>	VU	.	351085
Insects	Atlas Moth	<i>Attacus wardi</i>	EN	.	183182
Fish	Dwarf Sawfish	<i>Pristis clavata</i>	VU	.	176943
Fish	Green Sawfish	<i>Pristis zijsron</i>	VU	VU	176965
Reptiles	Green Turtle	<i>Chelonia mydas</i>	.	VU	176291
Reptiles	Hawksbill Turtle	<i>Eretmochelys imbricata</i>	.	VU	176298
Reptiles	Olive Ridley	<i>Lepidochelys olivacea</i>	.	EN	176305
Reptiles	Flatback Turtle	<i>Natator depressus</i>	.	VU	176284
Reptiles	Mertens' Water Monitor	<i>Varanus mertensi</i>	VU	.	347295
Reptiles	Yellow-spotted Monitor	<i>Varanus panoptes</i>	VU	.	347307
Birds	Emu	<i>Dromaius novaehollandiae</i>	VU	.	176363
Birds	Red Goshawk	<i>Erythrorhynchus radiatus</i>	VU	VU	176391
Birds	Australian Bustard	<i>Ardeotis australis</i>	VU	.	176354
Birds	Australian Painted Snipe	<i>Rostratula australis</i>	VU	VU	246428
Birds	Masked Owl	<i>Tyto novaehollandiae</i>	EN/ VU	EN/VU	177895
Birds	Masked Owl (northern mainland)	<i>Tyto novaehollandiae kimberli</i>	VU	VU	594609
Birds	Gouldian Finch	<i>Erythrura gouldiae</i>	EN	EN	176370
Mammals	Northern Quoll	<i>Dasyurus hallucatus</i>	CR	EN	176443
Mammals	Northern Brush-tailed Phascogale	<i>Phascogale pirata</i>	VU	.	177965
Mammals	Bare-rumped Sheath-tailed Bat	<i>Saccolaimus saccolaimus</i>	.	CR	177111
Mammals	Blue Whale	<i>Balaenoptera musculus</i>	DD	EN	233883
Mammals	Humpback Whale	<i>Megaptera novaeangliae</i>	DD	VU	280686

EX = Extinct EW = Extinct in the Wild ER = Extinct in the NT EN = Endangered  
 EN/VU = One Endangered subspecies/One Vulnerable subspecies  
 VU = Vulnerable  
 VU/- = One or more subspecies vulnerable EN/- = One or more subspecies endangered

More species info: Go to [www.landmanager.org.au/view/index.aspx?id=####](http://www.landmanager.org.au/view/index.aspx?id=####)  
 where #### is the ID number from the tables above for the species of interest.

Species listed in the table above were recorded from all the grid cells shown below (red/blue line) that overlap East Point, Darwin



# East Point, Darwin Weeds and Potential Weeds

Introduced plants recorded in the grid cell(s) in which East Point, Darwin occurs and that have been identified as problem weeds in one or more locations in northern Australia. Occurrence based on Department of Natural Resources, Environment and The Arts databases.

Common Name	Scientific Name	NT Status	National Status	Other Status	ID
African Mahogany	<i>Khaya senegalensis</i>	.	.	C&E	361295
African Tulip Tree	<i>Spathodea campanulata</i>	.	.	Q3 WeedsAus	292854
American Rat's Tail Grass	<i>Sporobolus jacquemontii</i>	.	.	Q2 G&M	292904
Awnless Barnyard Grass	<i>Echinochloa colona</i>	.	.	DEU	290114
Barleria	<i>Barleria prionitis</i>	A C	ALERT	MP K2 C&E G&M	288734
Bellyache Bush	<i>Jatropha gossypifolia</i>	B C	.	K2 WA1 WA4 Q2 C&E G&M CYP DEU	113957
Bitter Broom	<i>Scoparia dulcis</i>	.	.	DEU	292424
Blue Trumpet Vine	<i>Thunbergia grandiflora</i>	.	.	Q2 C&E CYP	293124
Branched Porterweed	<i>Stachytarpheta australis</i>	B C	.	.	361505
Calopo	<i>Calopogonium mucunoides</i>	.	.	MP C&E CYP	288904
Caltrop	<i>Tribulus terrestris</i>	B C	.	CYP SA	361555
Candle Bush	<i>Senna alata</i>	B C	.	WA1 WA2	292444
Caribbean Stylo	<i>Stylosanthes hamata</i>	.	.	DEU	292974
Cayenne Snakeweed	<i>Stachytarpheta cayennensis</i>	B C	.	NSW	292924
Centro	<i>Centrosema molle</i>	.	.	MP	289184
Cinderella Weed	<i>Synedrella nodiflora</i>	.	.	C&E	293024
Clustering Fishtail Palm	<i>Caryota mitis</i>	.	.	C&E WeedsAus	361015
Coast Morning Glory	<i>Ipomoea cairica</i>	.	.	NSW	290774
Coffee Bush	<i>Leucaena leucocephala</i>	.	.	MP C&E G&M CYP	290894
Columbus Grass	<i>Sorghum alnum</i>	.	.	NSW	361495
Common Sensitive Plant	<i>Mimosa pudica</i>	C	.	WA1 WA2	291294
Common Sensitive Plant	<i>Mimosa pudica var. hispida</i>	C	.	WA1 WA2	291294
Common Stylo	<i>Stylosanthes guianensis</i>	.	.	DEU	292964
Cow Itch	<i>Mucuna pruriens var. utilis</i>	.	ALERT	NAQS C&E	291384
Creeping Wood-sorrel	<i>Oxalis corniculata</i>	.	.	NSW	291584
Cupid's Flower	<i>Ipomoea quamoclit</i>	.	.	C&E	371932
Fierce Thornapple	<i>Datura ferox</i>	A C	.	WA1 WA3 WA4 G&M	289904
Flannel Weed	<i>Sida cordifolia</i>	B C	.	WA1 G&M DEU	292594
Fringed Spiderflower	<i>Cleome ruidosperma</i>	.	.	NAQS Gr	289494
Gamba Grass	<i>Andropogon gayanus</i>	A C	.	MP K1 Q2 WA2 C&E G&M CYP	179446
Gambia Pea	<i>Crotalaria goreensis</i>	.	.	MP	183442
Golden Shower	<i>Cassia fistula</i>	.	.	WeedsAus	289034
Gomphrena Weed	<i>Gomphrena celosioides</i>	.	.	DEU	290514
Grader Grass	<i>Themeda quadrivalvis</i>	B C	.	G&M CYP DEU	107883
Guinea Grass	<i>Megathyrsus maximus</i>	.	.	MP DEU	291184
Hyptis	<i>Hyptis suaveolens</i>	B C	.	G&M	290734
Indian Bluegrass	<i>Bothriochloa pertusa</i>	.	.	DEU	288804
Indian Heliotrope	<i>Heliotropium indicum</i>	.	.	DEU	290584
Ivy Gourd	<i>Coccinia grandis</i>	.	.	WA1 WA2 C&E	289524
Jamaican Snakeweed	<i>Stachytarpheta jamaicensis</i>	B C	.	.	292924
Jaragua Grass	<i>Hyparrhenia rufa</i>	.	.	G&M	290694
Lantana	<i>Lantana camara</i>	B C	WONS	K2 WA1 Q3 Gr G&M CYP DEU NSW SA	237738
Mexican Clover	<i>Richardia brasiliensis</i>	.	.	DEU	292244
Mimosa	<i>Mimosa pigra</i>	A (S of 14 deg S) B (N of 14 deg S) C	WONS	MP K2 WA1 WA2 Q1 G&M CYP SA	291304
Mission Grass (annual)	<i>Pennisetum pedicellatum</i>	.	.	WeedsAus	291864
Mission Grass (perennial)	<i>Pennisetum polystachion</i>	B C	.	MP K2 C&E G&M	291884
Mission Grass (perennial)	<i>Pennisetum polystachion</i> subsp. <i>polystachion</i>	B C	.	MP K2 C&E G&M	291884
Mission Grass (perennial)	<i>Pennisetum polystachion</i> subsp. <i>setosum</i>	B C	.	MP K2 C&E G&M	291884



Common Name	Scientific Name	NT Status	National Status	Other Status	ID
Mossman River Grass	<i>Cenchrus echinatus</i>	B C	.	NSW	289124
Mother-In-Law's Tongue	<i>Sansevieria trifasciata</i>	.	.	C&E CYP	292384
Nutgrass	<i>Cyperus rotundus</i>	.	.	DEU SA	289844
Paddy's Lucerne	<i>Sida rhombifolia</i>	B C	.	MP G&M DEU	292604
Para Grass	<i>Urochloa mutica</i>	.	.	MP G&M	293304
Parkinsonia	<i>Parkinsonia aculeata</i>	B C	WONS	MP K2 WA1 WA4 Q2 G&M CYP DEU NSW SA	114160
Pink Periwinkle	<i>Catharanthus roseus</i>	.	.	C&E	289064
Purpletop Chloris	<i>Chloris barbata</i>	.	.	DEU	289314
Rangoon Creeper	<i>Quisqualis indica</i>	.	.	C&E	292204
Red Natal Grass	<i>Melinis repens</i>	.	.	DEU	291224
Rhodes Grass	<i>Chloris gayana</i>	.	.	DEU	289334
Roadside Leafbract	<i>Malachra fasciata</i> var. <i>lineariloba</i>	.	.	CYP	361325
Sabi Grass	<i>Urochloa mosambicensis</i>	.	.	DEU	293294
Shoe-button	<i>Ardisia elliptica</i>	.	.	C&E	288544
Shrubby Stylo	<i>Stylosanthes scabra</i>	.	.	G&M DEU	292994
Sicklepod	<i>Senna obtusifolia</i>	B C	.	WA1 WA2 Q2 G&M CYP DEU	131903
Singapore Daisy	<i>Sphagneticola trilobata</i>	.	.	Q3 C&E CYP	292884
Siratro	<i>Macropitium atropurpureum</i>	.	.	C&E	291024
Soft Lovegrass	<i>Eragrostis pilosa</i>	.	.	DEU	372338
Spearpod	<i>Ruellia tuberosa</i>	.	.	C&E	292314
Spiny Amaranth	<i>Amaranthus spinosus</i>	.	.	WA1 WA2	288384
Spiny Sida	<i>Sida spinosa</i>	.	.	DEU	292614
Spiny-head Sida	<i>Sida acuta</i>	B C	.	WA1 G&M	292584
Starburr	<i>Acanthospermum hispidum</i>	B C	.	.	288214
Townsville Lucerne	<i>Stylosanthes humilis</i>	.	.	DEU	292984

#### Status Codes:

##### 1. NATIONAL STATUS CODES

WONS, Weeds of National Significance

Alert, Alert List for Environmental Weeds (Please call Exotic Plant Pest Hotline 1800 084 881 if you think you have seen this weed)

Sleeper, National Sleeper Weed

Target, Targeted for eradication. ([www.landmanager.com.au/view/index.aspx?id=449837](http://www.landmanager.com.au/view/index.aspx?id=449837))

##### 2. NT STATUS CODES

A, NT Class A Weed (to be eradicated)

B, NT Class B Weed (growth & spread to be controlled)

C, NT Class C Weed (not to be introduced) ([www.landmanager.com.au/view/index.aspx?id=449869](http://www.landmanager.com.au/view/index.aspx?id=449869))

##### 3. OTHER STATUS CODES

C&E, Csurhes, S. & Edwards, R. (1998) Potential Environmental Weeds in Australia. Candidate Species for Preventative Control. Environment Australia, Canberra ([www.landmanager.com.au/view/index.aspx?id=394504](http://www.landmanager.com.au/view/index.aspx?id=394504))

CYP, Draft Cape York Peninsula Pest Management Plan 2006-2011 ([www.landmanager.com.au/view/index.aspx?id=371200](http://www.landmanager.com.au/view/index.aspx?id=371200))

DEU, Plants listed as environmental weeds by the Desert Uplands Strategic Land Resource

Assessment ([www.landmanager.com.au/view/index.aspx?id=332123](http://www.landmanager.com.au/view/index.aspx?id=332123))

G&M, Grice AC, Martin TG. 2005. The Management of Weeds and Their Impact on Biodiversity in the Rangelands. Cooperative Research Centre (CRC) for Australian Weed Management and CSIRO Sustainable Ecosystems. Commonwealth Australia ([www.landmanager.com.au/view/index.aspx?id=163572](http://www.landmanager.com.au/view/index.aspx?id=163572))

Gr, Groves et al. 2003. Weed categories for natural and agricultural ecosystem management. Bureau of Rural Sciences ([www.landmanager.com.au/view/index.aspx?id=388018](http://www.landmanager.com.au/view/index.aspx?id=388018))

K0, High Priority Weeds not yet established in the Katherine region

K1, High Priority Weeds posing environmental threats in the Katherine region

K2, High Priority Weeds posing existing threats in the Katherine region, as described in the Katherine Regional Weed Management Strategy 2005-2010

([www.landmanager.com.au/view/index.aspx?id=130286](http://www.landmanager.com.au/view/index.aspx?id=130286))

MP, Northern Territory Parks & Conservation Masterplan ([www.landmanager.com.au/view/index.aspx?id=144141](http://www.landmanager.com.au/view/index.aspx?id=144141))

NAQS, North Australian Quarantine Strategy Target List ([www.landmanager.com.au/view/index.aspx?id=449416](http://www.landmanager.com.au/view/index.aspx?id=449416))

NSW, Declared Noxious Weed in NSW ([www.landmanager.com.au/view/index.aspx?id=449983](http://www.landmanager.com.au/view/index.aspx?id=449983))

Q1, QLD Class 1 Weed (not to be introduced, kept or supplied-

Q2, Class 2 Weed (eradicate where possible, not to be introduced, kept or supplied)

Q3, Qld Class 3 Weed (to be controlled near environmentally sensitive areas- not to be supplied/sold without a permit) ([www.landmanager.com.au/view/index.aspx?id=190714](http://www.landmanager.com.au/view/index.aspx?id=190714))

SA, Declared Plant in South Australia ([www.landmanager.com.au/view/index.aspx?id=449996](http://www.landmanager.com.au/view/index.aspx?id=449996))

WeedsAus, Listed as a significant weed by Weeds Australia ([www.landmanager.com.au/view/index.aspx?id=14576](http://www.landmanager.com.au/view/index.aspx?id=14576))

WA1, WA Weed Class P1 (movement prohibited)

WA2, WA Weed Class P2 (aim to eradicate)

WA3, WA Weed Class P3 (control infestations)

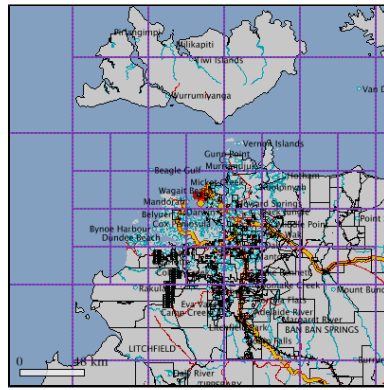
WA4, WA Weed Class P4 (prevent spread)

WA5, WA Weed Class P3 (control infestations on public land) ([www.landmanager.com.au/view/index.aspx?id=449884](http://www.landmanager.com.au/view/index.aspx?id=449884)).

More species info: Go to [www.landmanager.org.au/view/index.aspx?id=####](http://www.landmanager.org.au/view/index.aspx?id=####)

where #### is the ID number from the tables above for the species of interest.

Plants listed in the table above were recorded from all the grid cells shown below (red/blue line) that overlap East Point, Darwin



# East Point, Darwin Pest and Potential Pest Animals

Animals with pest potential recorded in the bioregion(s) in which East Point, Darwin occurs. Occurrence based on Department of Natural Resources, Environment and The Arts databases.

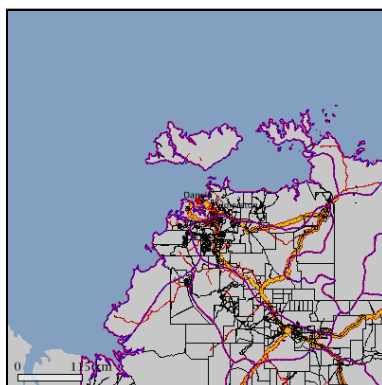
Common Name	Scientific Name	NT Status	National Status	ID
Cane Toad	<i>Chaunus marinus</i>	P	.	183252
Asian House Gecko	<i>Hemidactylus frenatus</i>	P	.	188964
Flower-pot Blind Snake	<i>Ramphotyphlops braminus</i>	P	.	189084
King Quail	<i>Excalfactoria chinensis</i>	P	.	450567
Rock Dove	<i>Columba livia</i>	P	.	183336
Red-tailed Black-Cockatoo	<i>Calyptorhynchus banksii</i>	N	.	223765
Sulphur-Crested Cockatoo	<i>Cacatua galerita</i>	N	.	223772
Common Starling	<i>Sturnus vulgaris</i>	P	.	188980
House Sparrow	<i>Passer domesticus</i>	P	.	183322
Eurasian Tree Sparrow	<i>Passer montanus</i>	P	.	450580
Agile Wallaby	<i>Macropus agilis</i>	N	.	223786
House Mouse	<i>Mus musculus</i>	P	.	187720
Black Rat	<i>Rattus rattus</i>	P	.	183236
Dingo / Wild dog	<i>Canis lupus</i>	N	.	183280
Cat	<i>Felis catus</i>	P	.	183259
Donkey	<i>Equus asinus</i>	P	.	183287
Horse	<i>Equus caballus</i>	P	.	183315
Pig	<i>Sus scrofa</i>	P	.	183329
Swamp Buffalo	<i>Bubalus bubalis</i>	P	.	183245
Cattle	<i>Bos indicus / Bos taurus</i>	P	.	183266

**NT STATUS CODES:**

P, Prohibited species (all exotic vertebrates except those listed as non-prohibited ([www.landmanager.com.au/view/index.aspx?id=450509](http://www.landmanager.com.au/view/index.aspx?id=450509)))  
 Int, Introduced species (all non-prohibited vertebrates, and all other exotic species ([www.landmanager.com.au/view/index.aspx?id=280771](http://www.landmanager.com.au/view/index.aspx?id=280771)))  
 N, Native species with pest potential.

More species info: Go to [www.landmanager.org.au/view/index.aspx?id=####](http://www.landmanager.org.au/view/index.aspx?id=####)  
 where #### is the ID number from the tables above for the species of interest.

Potential pest animals listed in the table above were recorded from the bioregions shown below (red/blue line) that overlap East Point, Darwin



Generated from NT Infonet (<http://www.infonet.cdu.edu.au/nrm>) Wed Jun 29 15:00:42 CST 2011

Soils and vegetation graphs and tables refer to area of soils and vegetation only. Fire graphs and tables refer to entire selected area including sea if present. Calculations are derived from map images or vector data, and should be taken as a guide only. Accuracy cannot be guaranteed. For small areas, figures should be rounded to the nearest whole number.