



Our ref DDPI2010/5713~0003

Mr Karl Hampton MLA
Minister for Natural Resources, Environment and
Heritage
GPO Box 3146
DARWIN NT 0801

1011/0862-KRH

Chief Executive
5th Floor, Energy House
18-20 Cavenagh Street
Darwin NT 0800
Postal GPO Box 2520
Darwin NT 0801
Tel (08) 8924 7286
Fax (08) 8924 7044
Web www.nt.gov.au/dlp

Dear Minister

Revised Scope of Works in the Notice of Intent - Proposed Expansion of the East Arm Port

Development of the expansion of the East Arm Port has progressed to the stage of requiring an environmental assessment. A Notice of Intent (NOI) to conduct an environmental assessment (dated 29 June 2009) was submitted to the Department of Natural Resources, Environment, the Arts and Sport (NRETAS) on 6 July 2009.

Since then, reductions to the scope of works have occurred as shown on Attachments A and B. Consistent with clause 14A of the Environmental Assessment Administrative Procedures, this Agency, as proponent of this project, is required to advise the Minister responsible of any significant changes to the scope of works.

Your advice is now sought on any changes required to the guidelines for the preparation of a draft environmental impact statement. The significant change to the scope of works relates to the deletion of the development of waterfront industrial blocks on Muramats Road, and the revised impact on the land for the new rail infrastructure. Four key areas were identified for development in the originally submitted NOI and have been changed as follows:

- | | |
|---|---|
| Area 1 - Additional Rail Loops: | 685.5 hectares of disturbed area - changed to approximately 70 hectares of disturbed or reclaimed land. |
| Area 2 - Marine Supply Base: | 24 hectares of reclaimed land - changed to approximately 10 hectares of reclaimed and 40 hectares of previously reclaimed land. |
| Area 3 - Defence Hardstand: | 3 hectares of reclamation – changed to approximately 3.5 hectares. |
| Area 4 – Subdivision works west of the existing Muramats Road allotments: | 80 hectares of reclaimed or disturbed area – changed to zero as the component has been dropped. |

AREA 1

Fill and reclamation to provide an additional rail loop spur into the bulk stockpile area

Original Scope - This project is to establish additional rail loops (Loop 'A' and 'B') to the expanded bulk stockpile areas with a supporting rail dump facility and rail loading area. The area will be constructed by establishing a seawall, backfilled with a combination of dredged material and excavated material including sand and gravel, sourced from off-site projects. This area comprises harbour open water, with fringing mangrove forests and mud flats at the entrance to and along Bleasers Creek. The original footprint area was 685.5 hectares.

Revised Scope - The reduced footprint for the rail loop is 30.5 hectares of disturbed land, instead of 685.5 hectares.

Extension of the existing East Arm Wharf Quay Line

Original Scope - The wharf is to be expanded from its current four berth to nine berth capacity in stages, with a multiple tug berth capacity on the north side. The wharf extension along the existing quay line will be supported by a sea/swell protection wall on the northern side of the wharf. The wharf extension may be constructed with similar design and materials to the current wharf. The original footprint area was 685.5 hectares.

Revised Scope - As there is no pressing need for wharf extension, the tug berths will most likely be built as a systems of pontoons and gangways behind the current berths, and will proceed independent of any expansion of the existing quay line. It is scheduled to be completed by 2014 to meet the need for additional tugs to support the Inpex project. There are no changes to the physical scope of works, only the timing. There is no need for reclamation for the tug berths or the future berth. Both will be constructed using piling and decking, or pontoons in the case of the tug berths.

Fill and reclamation north of the existing East Arm Wharf Ponds

Original Scope - Further hardstanding to support open and covered dry bulk material stockpiles will be developed onshore in the current ponded areas. They will be filled with a combination of dredged material and excavated material sourced from off-site projects. The area to be filled comprises disturbed areas and bunded ponds. Longer term development plans include a road/rail corridor constructed parallel to the above spur line and extending to the wharf by constructing a harbour-facing sea wall and backfilling the inner wharf environs to the outer limits of Section 5631 and the Zone DV and the ponds directly behind the Marine Supply Base, with a combination of dredged material and excavated material from off-site projects. This area comprises harbour open water, fringing mangroves and mudflats along the southern side of Bleasers Creek. The original footprint area was 685.5 hectares.

Revised Scope - Nil. However this is dependent on a needs basis. If new ponds are required, they will be limited to the current requirements. To contain all dredging from this project, an area of approximately 25 hectares of pond space will need to be constructed.

Disposal of Dredge Spoil

Original Scope - Dredge spoil from elements of this Project and the planned channel deepening toward the East Arm Wharf (covered under a separate NOI by another proponent) will be disposed of onshore for use in the additional stockpile hardstanding, the additional rail spurs into the bulk stockpile area and wharf, the Defence Hardstand and Marine Supply Base, and the Muramats Road west allotments.

Revised Scope - It is proposed that a large proportion of the unusable dredge spoil be dumped offshore at an approved dumping site. The estimated volume of dredge material is 1.2 million cubic metres. Geotechnical analysis of the material to be dredged suggests that the bulk of the material (greater than 80%) will be unusable for reclamation purposes. The advice we have received is to dispose of the material offshore at an approved site.

AREA 2

Marine Supply Base

Original Scope - This project is to establish a Marine Supply Base located west of the Defence Hardstand. It will be constructed by linking the land-based hardstand to an offshore hardstand with a harbour-facing sea wall, backfilled with a combination of dredged and excavated material sourced from off-site projects. It will be established on a combination of disturbed land, backfilled bunded ponds and harbour foreshore. The Marine Supply Base was scheduled to commence in 2010, and the footprint for the MSB was nominally 24 hectares of reclaimed land.

Revised Scope - The Marine Supply Base is required to commence construction at the end of 2011 by the successful proponent of the Expression of Interest. There are no changes to the physical scope of works only the timing. The land to be made available to the proponent for the MSB is approximately 10 hectares over water and 40 hectares of previously reclaimed land.

AREA 3

Defence Hardstand

Original Scope - This project is to establish a small Barge Ramp and Defence Hardstand on the southern side of the Peninsula. It will be constructed by linking the land-based hardstand to an offshore hardstand with a harbour-facing sea wall and backfilled with suitable materials. It will be established on a combination of disturbed land, backfilled bunded ponds and harbour foreshore. The Defence Hardstand was scheduled to commence in 2010 and the reclaimed land for the hardstand area was nominally 3 hectares.

Revised Scope - The Defence Hardstand Area, under agreement between the Department of Defence and the Port Corporation, will make the facility available for local commercial barge operators. The facility is now not required by 2010 and will commence after the environmental assessment process is complete. There are no changes to the physical scope of works however the area is now 3.5 hectares instead of 3 hectares.

AREA 4

LDC Sub-division works west of the existing Muramats Road allotments

Original Scope - Additional waterfront industrial lots were to be established in stages on Land Development Corporation (LDC) land along the shoreline extending west from the current industrial allotments at Muramats Road, by establishing a harbour-facing sea wall, backfilled with a combination of dredged material and excavated material sourced from off-site projects. The planned subdivision was to be established over coastal terrain, fringing mangrove forests and mud flats and Harbour foreshore. Area of disturbance and reclamation was 80 hectares.

Revised Scope - This project has been deleted, which reduces the area subject to an EIS by 80 hectares.

I look forward to your response to this notification. The project web address is www.eastarmwharf-eis.com.au

Yours sincerely

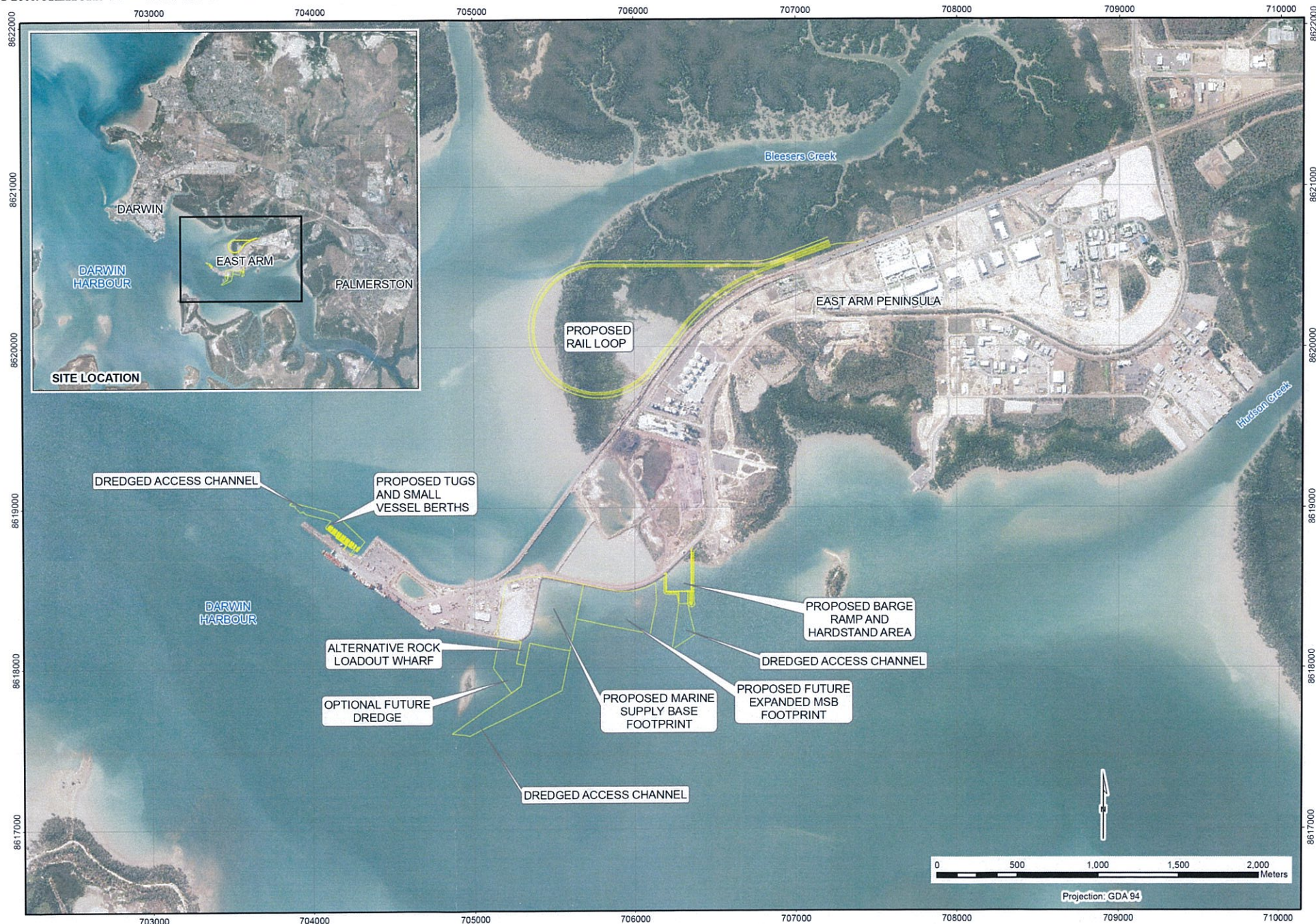
A handwritten signature in blue ink, consisting of a large 'D' followed by a series of loops and a long horizontal stroke.

DAVID RITCHIE

3 June 2011

A

Attachment B – Revised Plan



Areas in yellow are substantially smaller envelopes to the original scope. Source – Environmental Impact Statement (URS)