

SECTION 14 INCIDENT REPORT (*Waste Management and Pollution Control Act*)

Date and Time of Notification:	23 rd August 2024
Company:	Groote Eylandt Mining Company Pty. Ltd. (GEMCO)
Incident:	Vegetation impacts in proximity to GEMCO's mining operation.
(a) the incident causing or threatening to cause pollution	Vegetation in proximity to GEMCO's mining operation may have been adversely affected by dieback in connection with GEMCO's site dewatering.
(b) the place where the incident occurred	Area of vegetation adjacent to GEMCO's tailings storage facility 15 (i.e. TSF15) (Figure 1), extending off lease (Figure 2) and entering the surveyed Mamagiyaliyamanja cultural heritage site boundary (Figure 3).
(c) the date and time of the incident	A site inspection with the Anindilyakwa Land Council (ALC) and Traditional Owners on Thursday 15/8/2024 (approximately 11:30) has confirmed vegetation impacts.

<p>(d) how the pollution has occurred, is occurring or may occur</p>	<p>GEMCO has for some years conducted a program of releasing excess water from quarry areas within its mine site. This activity is approved by the Anindilyakwa Land Council (ALC) and through GEMCO's Mine Management Plan approved by the Department of Industry, Tourism and Trade (DITT).</p> <p>As part of that program, GEMCO conducts regular monitoring of water quality to ensure any water release is within the approved (by DITT) water quality criteria. Additionally, GEMCO have in place an adaptive management monitoring program to assess vegetation health and modify water release accordingly.</p> <p>Tropical Cyclone Megan impacted Groote Eylandt on the 15th-16th of March 2024 during which approximately 700mm of rainfall was received across the mine site in a 36 hour period. This resulted in around 26GL of additional water being held within GEMCO's mining voids. Since March, GEMCO has been executing a controlled release of excess quarry water from mining areas and tailings facilities in order to ensure their safe operation and to bring the mine back into operation in a controlled manner.</p> <p>In the course of regular environmental monitoring drone surveys, it has come to our attention that vegetation off-lease appears to have been affected. Regular water quality monitoring indicates the dewatered mine water is of good quality and within GEMCO's trigger limits as outlined within its Mine Management Plan. Any vegetation impacts are believed to be due to soil saturation.</p> <p>The site inspection with the ALC and Traditional Owners on Thursday 15/8/2024 has indicated that the cultural fabric of the Mamagiyaliyamanja heritage site has not been impacted.</p>
<p>(e) the attempts made to prevent, reduce, control, rectify or clean up the pollution or resultant environmental harm caused or threatening to be caused by the incident</p>	<p>Water discharge into the area ceased as soon as potential vegetation impacts were observed.</p> <p>Consultations are ongoing with the ALC in terms of any future remediation activities.</p>
<p>(f) the identity of the person notifying the NT EPA</p>	<p>Michael Smith Manager Technical Services GEMCO Mining Pty. Ltd.</p>

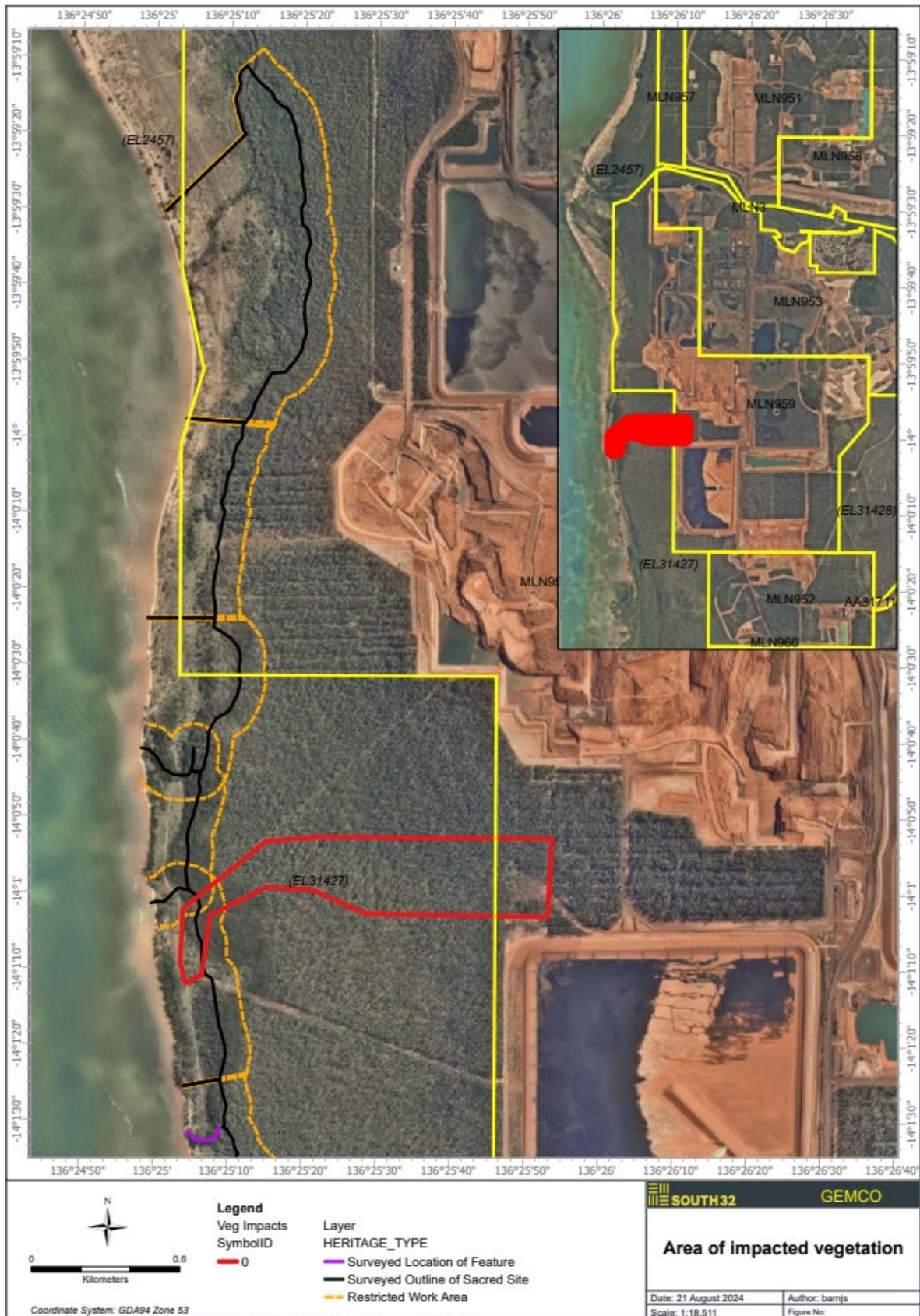


Figure 1: Area of vegetation die-back



Figure 2: Drone footage of vegetation die-back (East to West perspective)



Figure 3: Drone footage of vegetation die-back (within cultural heritage buffer and area)