

Container Deposit Scheme Quarterly Report

1 July to 30 September 2014

Northern Territory Environment Protection Authority

GPO Box 3675

Darwin

Northern Territory 0801

© Northern Territory Environment Protection Authority 2014

Important Disclaimer

This document has been prepared with all due diligence and care, based on the best available information at the time of publication. Any decisions made by other parties based on this document are solely the responsibility of those parties.

The Northern Territory Environment Protection Authority and Northern Territory of Australia do not warrant that this publication, or any part of it, is correct or complete. To the extent permitted by law, the Northern Territory Environment Protection Authority and Northern Territory of Australia (including their employees and agents) exclude all liability to any person for any consequences, including but not limited to all losses, damages, costs, expenses and other compensation, arising directly or indirectly from using, in part or in whole, any information or material contained in this publication.

1	Introduction	1
1.1	Amended Act.....	1
2	Key Definitions	1
3	Sales and Return Data.....	2
4	Containers Redeemed at Collection Depots.....	3
5	Redemption by Region.....	4

1 Introduction

The Northern Territory Container Deposit Scheme (CDS) commenced on 3 January 2012. The aim of the program is to reduce beverage container litter and increase resource recovery across the Northern Territory.

Five CDS coordinators are approved to operate in the Northern Territory. They are; Envirobank NT, Marine Stores, NT Coordinators, NT Recycling Solutions and Statewide Recycling. Their role is to work with the collection depots and beverage manufactures to recycle, reuse or appropriately dispose of approved containers.

Territorians can collect their 10 cents in return for each approved container that is delivered to an approved collection depot. During the July to September 2014 quarter collection depots were open in Pinelands, Winnellie, Katherine, Elliot, Alice Springs and Tennant Creek. Reverse Vending Machines (RVM) were operating in Milingimbi and at Charles Darwin University.

1.1 Amended Act

The amended *Environment Protection (Beverage Container and Plastic Bags) Act 2014* commenced on 30 June 2014. The regulatory oversight for the Act now lies with the Northern Territory Environment Protection Authority (NT EPA).

2 Key Definitions

Containers redeemed: the number of approved containers that have been accepted by collection depots to give a 10 cent refund to the community.

Containers returned: the number of containers that have been aggregated and returned to CDS coordinators from collection points.

HDPE (high-density polyethylene): materials that some juice containers are made from.

LPB (liquid paper board): materials utilised in packaging of beverages such as popper juices. LPB also includes aseptic which is the packaging of beverages in a sterile container, used for example in long life *ultra-high-temperature (UHT)* processed beverages.

Other containers: steel, foil sachets, and other plastics including biodegradable, photo-sensitive and plant-based plastics. This includes other resin types classified under resin identification coding (RIC) system established in 1988, and represented the number 7 on the bottom of plastic containers.

RVM reverse vending machine: a device that accepts used (empty) beverage containers and returns money to the user. Some RVM only accept aluminium and plastic containers.

3 Sales and Return Data

During the July to September 2014 quarter, 43 053 492 approved containers were sold in the Northern Territory. 21 538 748 off those containers were returned to CDS coordinators.

This equates to a return rate of 50.03% across all material types (see Table 1). That is, 50.03% of all containers sold in the Northern Territory were reused, recycled, or appropriately disposed of through the CDS.

Table 1: Number of containers returned by material type to CDS coordinators

Container Material	Containers Sold	Containers Returned to CDS Coordinators	Container Return Rate (%)
Aluminium	17 849 256	9 726 404	54.49
PET	10 472 245	4 056 836	38.74
HDPE	722 663	146 818	20.32
Glass	12 127 332	6 930 981	57.15
LPB	1 868 088	677 709	36.28
Steel/ Other	13 908	0	0
TOTAL	43 053 492	21 538 748	50.03

In this quarter 57.15% of glass containers sold in the Northern Territory were returned to CDS coordinators. Of the other major material streams 54.49% of aluminium containers, 38.74% of PET containers and 36.28% of LPB containers were processed through the scheme (see Figure 1).

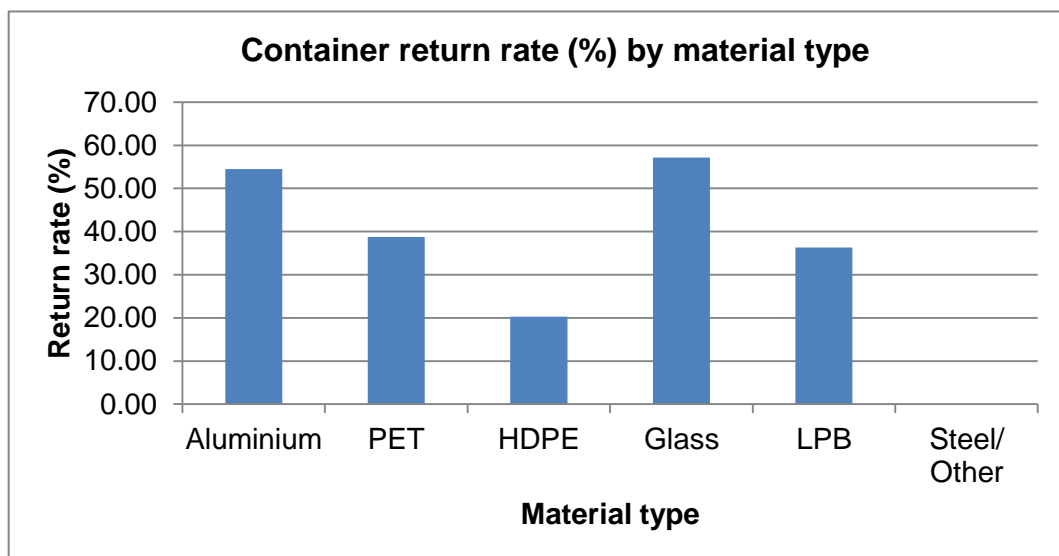


Figure 1: Return rate by material type

The CDS has seen a steady increase in return rates since the beginning of 2014. As figure 2 demonstrates, there has been an increase of 4.26% since the January to March 2014 quarter with a return rate of 50.03% achieved in the July to September 2014 quarter.

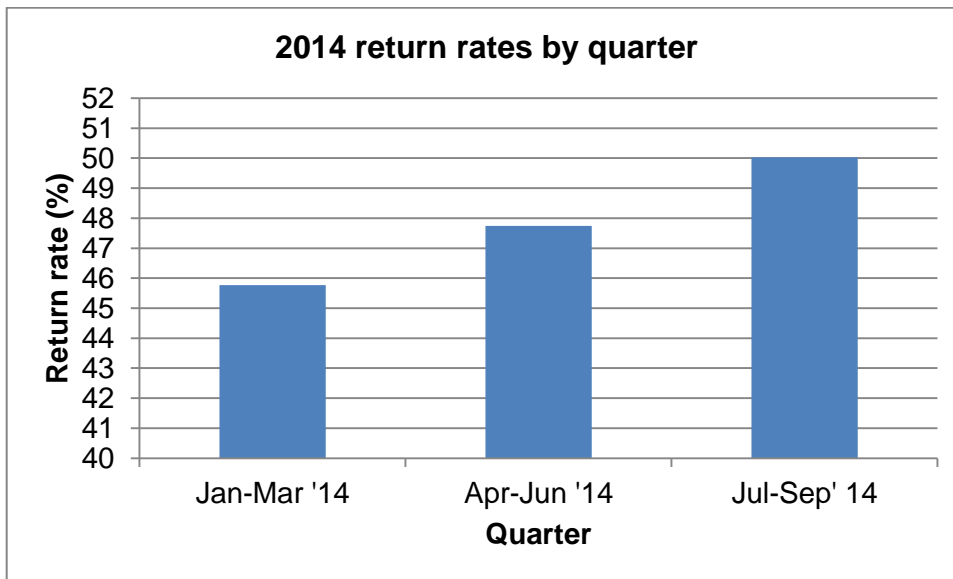


Figure 2: 2014 return rates by quarter

4 Containers Redeemed at Collection Depots

A total of 21 712 692 containers were redeemed at collection depots over the July to September 2014 quarter (see table 2). The redemption of these containers equates to over \$2.1 million in deposits that have been paid out to families, schools, community organisations and commercial operators in the Northern Territory over the July to September 2014 period.

Table 2 – Number of containers redeemed by material type at collection depots

Container material	Containers redeemed at collection depots
Aluminium	10 677 628
PET	3 400 281
HDPE	141 376
Glass	6 805 031
LPB	685 479
Steel/ Other	2 897
TOTAL	21 712 692

Figure 3 shows the number of containers redeemed at collection depots in each quarter during 2014. Over 3.6 million more containers were redeemed in the July to September 2014 quarter than the previous quarter.

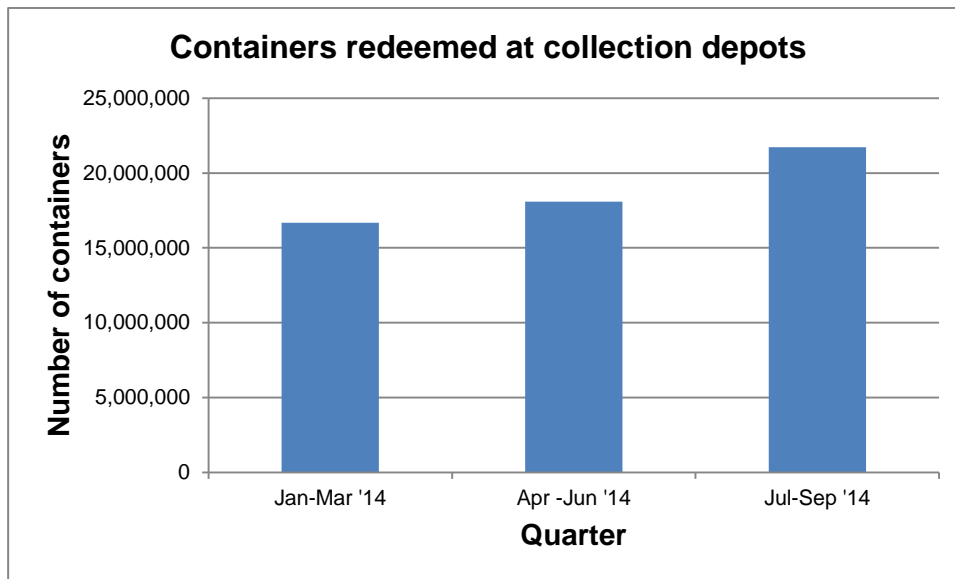


Figure 3: Number of containers redeemed at collection depots by quarter

5 Redemption by Region

Collection depots operating in the greater Darwin region include the depots located in Berrimah, Charles Darwin University (RVM), Pinelands and Winnellie. Areas outside of Darwin include depots in Katherine, Alice Springs, Tennant Creek, Elliot and Milingimbi:

- 16.34 million containers were redeemed in the greater Darwin region; and
- 5.38 million containers were redeemed in areas outside of Darwin (see Figure 4)

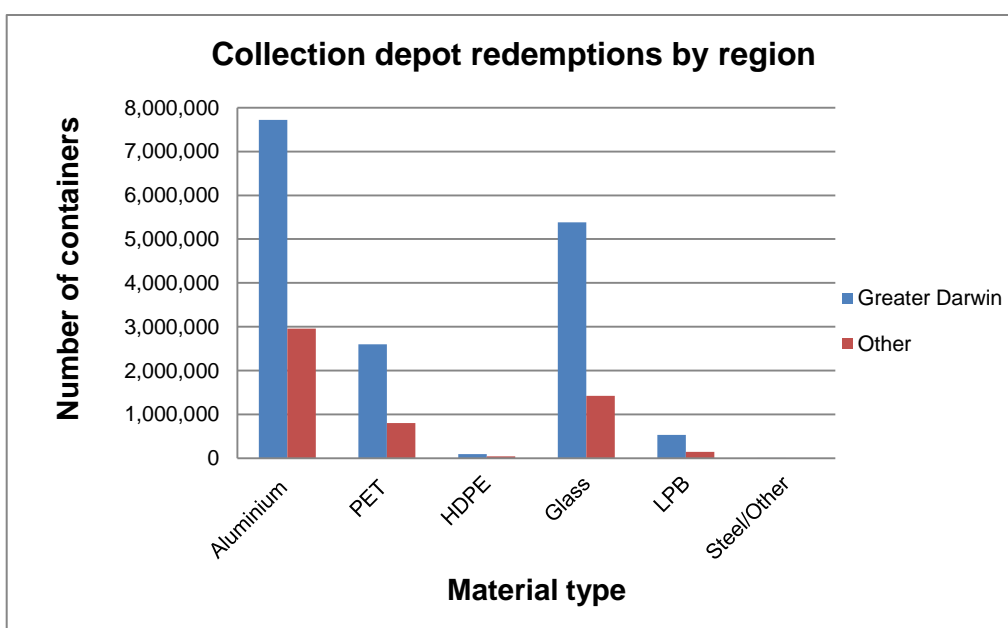


Figure 4: Collection depot redemptions by region