

## SECTION 14 INCIDENT REPORT (*Waste Management and Pollution Control Act*)

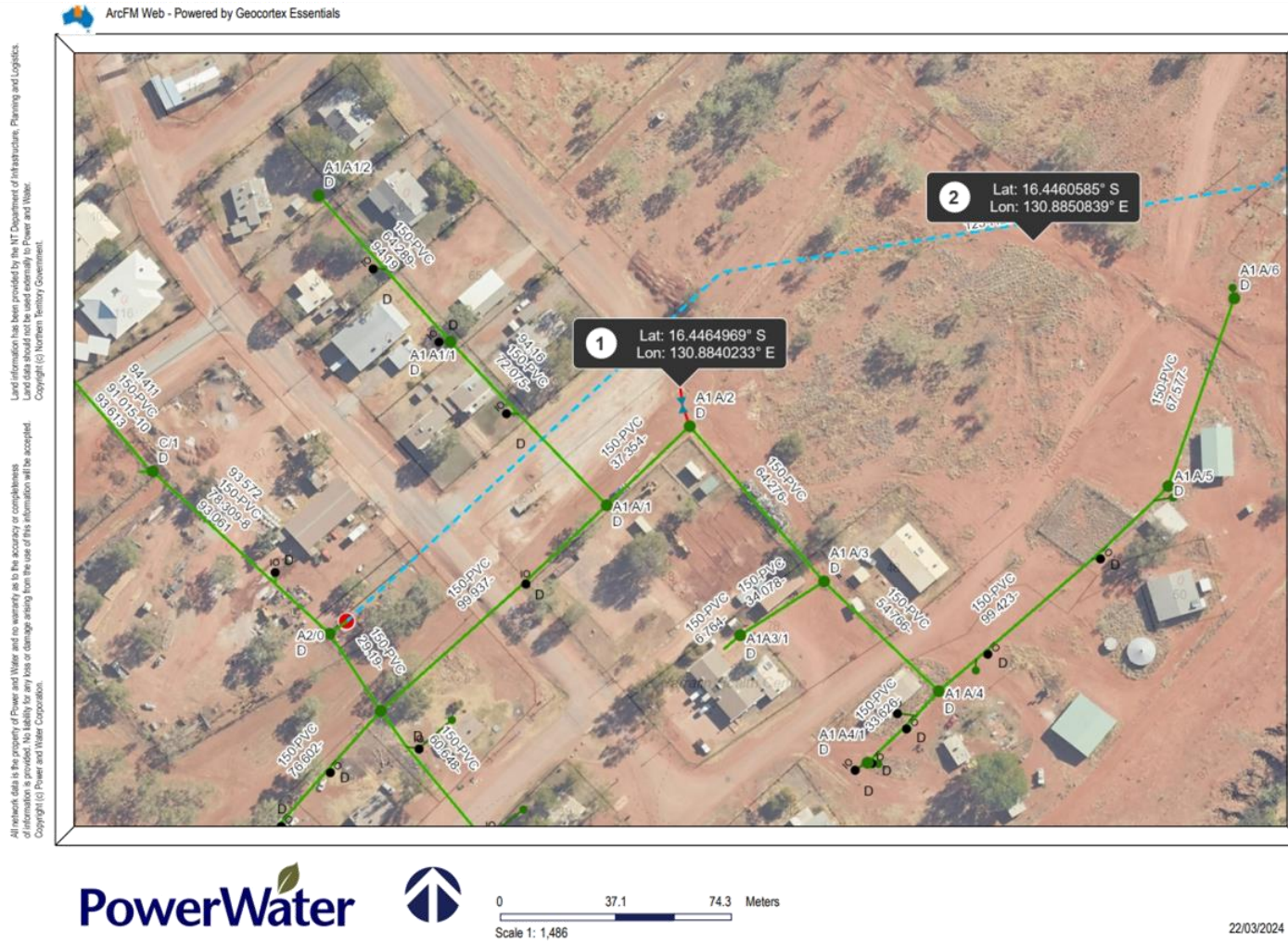
<b>Date and Time of Notification:</b>	Friday 22 <sup>nd</sup> March 2024, 16:00hrs
<b>Person / Company:</b>	Power and Water Corporation
<b>Incident:</b>	Discharge of sewage effluent from the Yarralin sewage pumping station

<p><b>(a) the incident causing or threatening to cause pollution</b></p>	<p><i>i. Description of the waste that was discharged.</i></p> <p>Raw, partially diluted sewage effluent</p> <p><i>ii. Indicative wastewater quality for the discharge.</i></p> <p>No representative or recent wastewater quality results are available, because this community's facility does not have a waste discharge licence, hence wastewater quality monitoring does not occur on a regular basis.</p> <p><i>iii. Volume of the waste that was discharged.</i></p> <p>The volume of wastewater discharged is unknown, no telemetric monitoring occurs in this location.</p>
<p><b>(b) the place where the incident occurred</b></p>	<p><i>i. Description of the Power &amp; Water asset from which the discharge occurred.</i></p> <p>Yarralin sewage pumping station #1</p> <p><i>ii. GPS coordinates of the discharge point from the Power &amp; Water asset, and the final coordinates of the final discharge point.</i></p> <p>Discharge Point 1: 130.8840233E, 16.4464969S (high level overflow discharge point)            Final Discharge Point: 130.8850839E, 16.4460585S (approximate final discharge point)</p> <p>Discharge occurred from the emergency discharge point, after having backed up 170 meters of the sewerage network, from the sewage pumping station.</p> <p><i>iii. Indicate any locations nearby to the discharge point where public can gain ready-access, such as public open spaces through which the discharge moves.</i></p>

	<p>Access by the public to the spill is possible. A flight to Yarralin is scheduled to land tomorrow to deliver temporary fencing to prevent the possibility of pedestrian access.</p>
<p><b>(c) the date and time of the incident</b></p>	<p><i>i. The time and date of commencement and cessation of the discharge.</i></p> <p>The timing of the overflow is unknown. The Katherine Power &amp; Water Technical Co-ordinator received a call from the customer service centre at 16:25hrs 21/03/2024. It was not until the morning of 22/03/2024 that the Power and Water's Environmental Services was notified.</p> <p><i>ii. How Power &amp; Water were notified, or became aware of the discharge.</i></p> <p>A council worker in Yarralin advised the Power and Water customer service centre, who advised the Katherine Technical Co-ordinator.</p> <p><i>iii. The process by which the discharge occurred.</i></p> <p>The cause of the overflow was a dislodged circuit breaker, which made the pumps inoperable. The flashing light from the high level alarm was unfortunately not acted upon earlier by the Utility Services contract worker.</p> <p><i>iv. The reason why the discharge occurred.</i></p> <p>As per (c) iii,</p>
<p><b>(d) how the pollution has occurred, is occurring or may occur</b></p>	<p>As per (c) iii &amp; (c) iv.</p>
<p><b>(e) the attempts made to prevent, reduce, control, rectify or clean up the pollution or resultant environmental harm caused or threatening to be caused by the incident</b></p>	<p><i>i. Confirmation signage and fencing has been erected, as appropriate.</i></p> <p>Barricading will be erected once it arrives at the community, which is scheduled to occur tomorrow via a chartered flight. This will prevent or reduce the possibility of the public making contact with the spill.</p> <p><i>ii. Decontamination of the site as appropriate.</i></p> <p>Clean up consistent with Sewage Spills/Overflow Response Work Instruction as appropriate to the location, and to minimise risk to the Environment. Site will be inspected for any wastewater gross pollutant and cleaned up if found.</p>
<p><b>(f) the identity of the person notifying the NT EPA</b></p>	<p>Power and Water's Environmental Team on behalf of Water Services</p>

## SECTION 14 INCIDENT REPORT (*Waste Management and Pollution Control Act*)

Appendix A – Location Map with co-ordinates of discharge point and approximate final discharge location.



Appendix B – Location Photograph – showing extent of discharge



Source: Power & Water contractor – Yarralin Utility Services Contract worker.