

SECTION 14 INCIDENT REPORT (*Waste Management and Pollution Control Act*)

Date and Time of Notification:	<p>First discharge event initially reported via phone to NT EPA on 1st January 2021 at 8:55 AM</p> <p>Update on second discharge event provided to NT EPA on 2nd January 2021 at 8:04 AM</p>
Person / Company:	GEMCO Mining Pty Ltd
Incident:	Stormwater from GEMCO Port Facility entering Milner Bay on 31 st December 2020 and 1 st January 2021.
(a) the incident causing or threatening to cause pollution	Stormwater from GEMCO Port stockpiles entering Milner Bay.
(b) the place where the incident occurred	GEMCO's Port Facility (see Figure 1 below).
(c) the date and time of the incident	<ul style="list-style-type: none"> • 31st December 2020 at approximately 5:00 PM • 1st January 2021 at approximately 11:30 AM
(d) how the pollution has occurred, is occurring or may occur	<p><u>31st December 2020</u> Stormwater overtopped a sump located at the transfer tower at the GEMCO Port Facility during a rainfall event and resulted in the discharge of stormwater into Milner Bay. One of the three pumps located within the sump failed during the rainfall event (Figure 1).</p> <p><u>1st January 2021</u> The GEMCO Port Facility received further rainfalls of > 90 mm and stormwater overtopped sumps located at the transfer tower and sample tower and discharged into Milner Bay (Figure 1).</p>

<p>(e) the attempts made to prevent, reduce, control, rectify or clean up the pollution or resultant environmental harm caused or threatening to be caused by the incident</p>	<p>During both events, one failed pump was manually started to stop the stormwater discharge. Water is no longer discharging off lease. No ongoing environmental impacts are anticipated from this event</p> <p>An investigation has commenced into why one of the pumps in place to manage the water has failed. If there has been a failure, repairs will be carried out to resolve the issue.</p> <p>Samples have been collected of the stormwater to assess the water quality which will be compared to relevant water quality guidelines (i.e. ANG 2018) and will be reported to the NT EPA.</p>
<p>(f) the identity of the person notifying the NT EPA</p>	<p>Jeremy Barnett (Environment Specialist)</p>

SECTION 14 INCIDENT REPORT (*Waste Management and Pollution Control Act*)

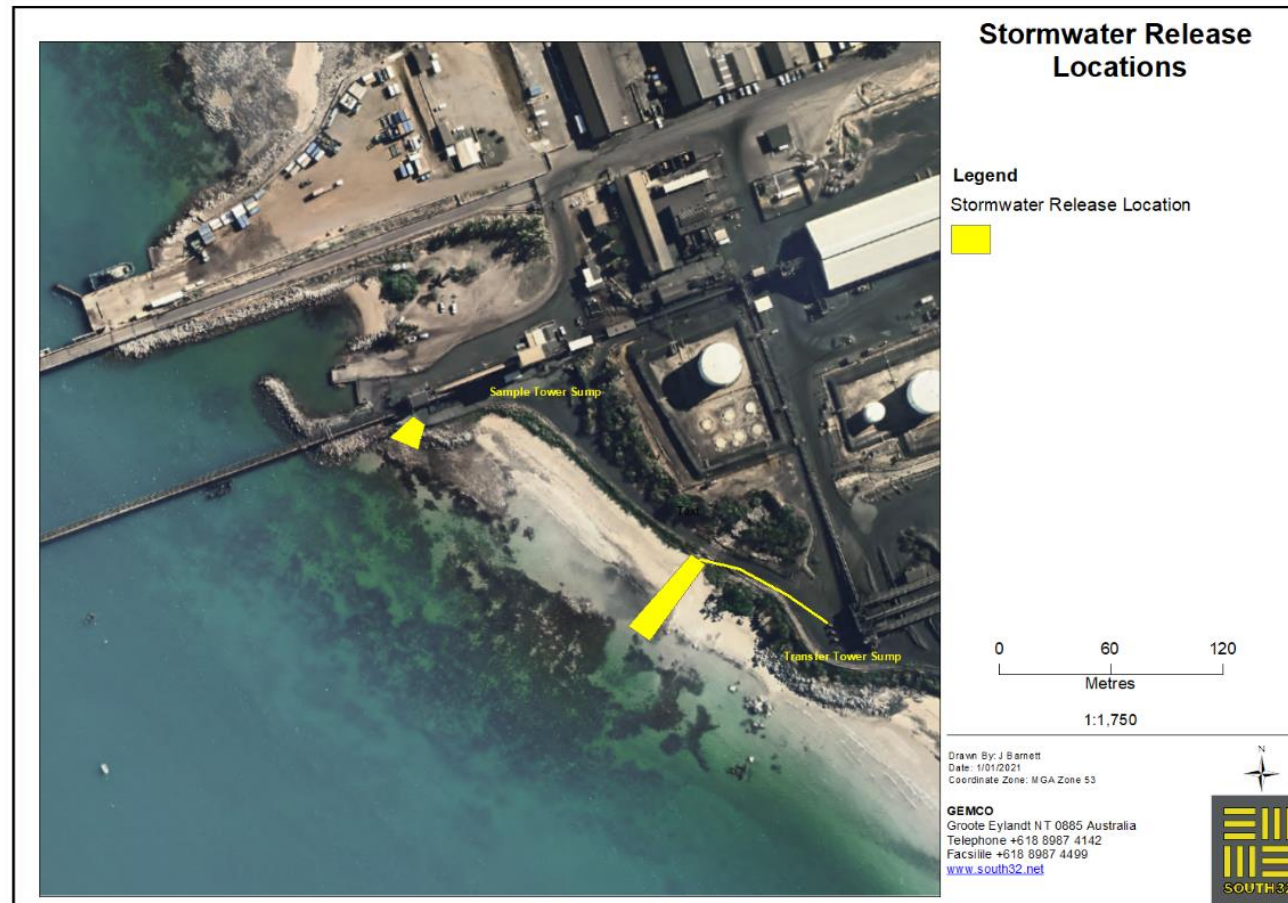


Figure 1: Stormwater discharge locations