

Lei Project

Underground Lithium Mine Development

Stakeholder Engagement Plan

Prepared by Lithium Plus Minerals
in conjunction with
True North Strategic Communication and Bina Sustainable Solutions
August 2024

Version No.	Issue Date	Prepared by:	Approved by:	Approval Date
V1	30 August 2024	LPM		

Recipients are responsible for eliminating all superseded documents in their possession

Table of Contents

Executive summary	3
Key objectives and goals	3
Key stakeholders.....	3
Key issues.....	3
Tools.....	4
Background.....	5
Issues analysis	6
Engagement.....	13
Engagement methodology.....	13
Guiding principals	13
Engagement goals and objectives.....	14
Key strategies	14
Stakeholder analysis.....	16
Key messages	29
Engagement tools.....	33
Communication protocols.....	35
Implementation plan.....	36

Executive summary

This stakeholder engagement plan has been developed by Lithium Plus Minerals Ltd in conjunction with True North Strategic Communication and in conjunction with Bina Sustainable Solutions.

The purpose of this plan is to identify key stakeholders the company should engage with, how to engage with and to provide pathways to hear and incorporate stakeholder feedback prior to applying for a Mineral Lease and the NT EPA Environmental Assessment Referral for the Lei Lithium Project.

Objectives and goals

The objectives and goals of this stakeholder engagement plan are broadly to:

- identify key stakeholders for engagement and future update
- assess stakeholders, and create a stakeholder map and engagement grid to guide engagement
- devise a communications and implementation plan
- engage stakeholders as informed by the communications plan
- analyse stakeholder feedback and demonstrate the incorporation of feedback into project plans
- to ensure stakeholders are aware of Lithium Plus Minerals and intentions for the Lei Project.

Key stakeholders

Key stakeholder groups covered by this plan include:

- Australian and Northern Territory Government – Ministers, Members of Parliament and Departments
- local government
- Aboriginal groups
- affected communities, residents and businesses
- nearby commercial interest holders
- community and emergency services
- industry and other interest groups.

Key issues

Potential social issues, queries and concerns stakeholders or the community may raise include:

1. Road safety and impacts on infrastructure arising during construction and the proposed haul route from the mine site to Darwin Port, affecting local traffic sharing local roads such as Fog Bay Road and Cox Peninsula Road
2. Truck movements and increased heavy traffic on community roads and nearby local schools
3. Dust and noise impact concerns of the local community and any other impacts to amenity including light, traffic, air emissions

4. Flora and fauna and other environmental concerns including water use and management, management of waste rock and potential for associated impacts, and future rehabilitation of the project impacts and management concerns
5. Local employment and contract opportunities including direct jobs during construction and operations and indirect jobs throughout the supply chain, and training considerations
6. Aboriginal employment and contract opportunities fostering meaningful engagement with relevant Aboriginal employment organisations to maximise opportunities
7. Heritage and culture implementation of identification and protection mechanisms and consultations with appropriate agencies including the Northern Land Council and Aboriginal Areas Protection Agency
8. Community impacts including concerns about fishing in the Cox Peninsula/Finniss area, cumulative impacts of development in the area, and impacts on essential services and local emergency services.

Engagement tools

The key tools to implement this plan include:

- briefings with key stakeholders
- communication materials that are easy to find and easy to read by a range of audiences, from technical documents to plain-English summaries
- presentations to key stakeholder groups supported by materials that demonstrate key activities
- media releases at key milestones and accessibility to local as well as national media (including photos and illustrations, and provision of quotes and photo opportunities with spokesperson)
- a minutes template to record all meetings, attendees, key issues raised and commitments
- a dedicated community email and enquiry line
- an issues management register with protocols for resolving and recording issues raised.

Background

Lithium Plus Minerals Limited (ASX: LPM) is a pure-play lithium company with a portfolio of mineral tenements in the Northern Territory.

The company's flagship Bynoe Lithium Project is located on the Cox Peninsula, 50 km south of Darwin at the northern end of the Litchfield Pegmatite Belt. The project comprises 11 granted tenements covering 297 km², including the Lei deposit that Lithium Plus Minerals plan to develop.

Geologically centred around the Bynoe Pegmatite Field, these tenements share a border with Core Lithium's Finniss Operation. Notably, significant lithium mineralisation was discovered at Lei in 2017 within the north-northeast trending spodumene-bearing pegmatites. Other drill-ready targets of the Bynoe Lithium Project include SW Cai, Cai, and Perseverance.

The Lei Project can be reached by road from Darwin via the Stuart Highway and then west along the sealed Cox Peninsula and Fog Bay Roads and is situated on vacant Crown land owned by the NT Government.

Lithium Plus Minerals are outlining plans for the development of the Lei Project, with intentions to seek a Mineral Lease and submit an Environmental Assessment referral in the coming months.

Issues analysis

Potential issue	Detail	Mitigation
Insufficient community engagement and company awareness	Lithium Plus Minerals faces a challenge of insufficient community engagement and a lack of awareness about the company and its operations. The community is not well-informed about Lithium Plus Minerals, creating a sense of exclusion that may result in potential resistance, opposition, or negative sentiment.	<ul style="list-style-type: none"> Establish a dedicated email address for stakeholder communication and phone line Develop regular newsletters for stakeholders, providing updates on project developments. Conduct targeted stakeholder briefings and community information sessions. Appoint resources for regular and ongoing, non-agenda driven, face to face contact.
Road safety issues	<p>Road safety issues caused by heavy vehicle traffic. Some existing issues in the area include:</p> <ul style="list-style-type: none"> road safety issues arising from the construction and industrial traffic sharing local roads such as Fog Bay Road and Cox Peninsula Road, especially through the community of Berry Springs lack of overtaking and turning lanes on Cox Peninsula Road exacerbating safety issues around heavy vehicles lack of road shoulders on Cox Peninsula Road danger of driving with heavy vehicles in heavy rain episodes. 	<ul style="list-style-type: none"> Address existing road safety issues. Provide information on road safety management plans. Encourage community members to contact the hotline number or feedback email to report on issues. Where possible, provide clear information about heavy vehicle movement scheduling to allow for commute planning. Develop driver safety program in partnership with local police to enhance people’s knowledge and improve road safety
Transport and logistics traffic	Key issues likely to arise from concerns about transport and logistics include:	<ul style="list-style-type: none"> Address road safety issues. Develop a budget to address road damage when needed.

Potential issue	Detail	Mitigation
	<ul style="list-style-type: none"> any impacts to tourism traffic on Cox Peninsula Road impacts to road integrity from increased heavy vehicle use and responsibility for road maintenance noise from heavy vehicles in rural residential areas capacity of local emergency services to respond to increased likelihood of road trauma, mutual aid agreement may be required. 	<ul style="list-style-type: none"> Provide information on road safety management plans. Engage with other relevant stakeholders such as Department of Infrastructure Planning and Logistics. Minimise impacts on tourism and road integrity. Implement noise reduction measures. Ensure emergency services can respond effectively. Emergency plans to be developed in partnership with local services to increase their awareness in case of emergency.
Degradation of the roads and broken windscreens	There may be concerns about road degradation (mainly Cox Peninsula Road) and broken windscreens due to heavy vehicle traffic.	<ul style="list-style-type: none"> Clearly communicate collaboration with the Department of Infrastructure, Planning and Logistics to help manage road safety and condition on Cox Peninsula Road. Develop a broken windscreen response plan and procedure.
Community amenity	<p>The community of Berry Springs is small and quiet, concerned about project impacts on general amenity during operations, including noise, dust, light, traffic, air emissions, water emissions and pollutants.</p> <p>Community members will also want to know what impacts the project will have on Berry Springs School and if it poses any safety risks for students and families.</p>	<ul style="list-style-type: none"> Conduct community engagement meetings for Berry Springs and surrounding residents. Conduct an impact assessment and provide reassurance on safety measures for Berry Springs School. Work with Berry Springs School to develop a safety program led by the children with potential employment opportunities for safety officers to monitor the road by the school during peak hours. Address unrealistic expectations and negative perceptions through transparent and regular communication.

Potential issue	Detail	Mitigation
		<ul style="list-style-type: none"> • Develop a commitments (KPI's) register to address community expectations and report on it regularly.
Impacts to amenity such as dust and noise	<p>Neighbouring communities may have concerns about dust from future mining operations and transporting ore.</p> <p>Stakeholders may have concerns about the possibility of dust from exploration and future mining activities affecting nearby communities and residents.</p>	<ul style="list-style-type: none"> • Proactively communicate risk mitigation tactics for dust. • Implement air quality monitoring and dust suppression activities. • Share ongoing air quality monitoring results with the community.
Flora and Fauna	<p>Stakeholders will be concerned about impacts on threatened flora and fauna species.</p> <p>Key issues include reduced groundwater levels and availability links to the Charlotte River, waste rock management, land clearing impacts to flora and fauna, erosion, weeds, plans for rehabilitation, and community concerns about cumulative impacts.</p>	<ul style="list-style-type: none"> • Reassure stakeholders that environmental impacts are manageable. Be upfront about the results from the technical work that have already taken place. • Provide information about environmental management practices and plans. Ensure Traditional Owners and key local representatives are involved in the development and implementation of plans. • Ensure operations have no significant impact on the Charlotte River, and the downstream Bynoe Harbour - a popular fishing destination that is highly valued by locals. Implement regular environmental monitoring and regularly update notice boards with the outcomes.
Water availability is a sensitive issue in the Cox Peninsula area	<p>Stakeholders will be concerned about potential contamination from spills or stormwater runoff into the local catchment.</p> <p>There may be assumptions or perception that bore water will be used, drawing on the local aquifer.</p>	<ul style="list-style-type: none"> • Provide information about surface water and drainage management practises or plans. Suggest following the ICMM Position Statement on Water Stewardship.

Potential issue	Detail	Mitigation
		<ul style="list-style-type: none"> Clearly state that the project will not draw on any rural water tables/aquifers (e.g. the Berry Springs Dolostone Aquifer). Communicate that water will be transported to site.
Management of waste rock and potential for associated impacts	Management of waste rock, including potential for acid rock drainage and visual amenity of waste rock and/or ROM.	<ul style="list-style-type: none"> Provide information about waste rock management plans. Waste rock dumps will be removed from the surface on closure by backfilling the mine.
Local employment and contract opportunities	<p>Stakeholders will be focused on jobs, training and contracts for the Northern Territory. This will include direct jobs during exploration and construction, and indirectly through the supply chain.</p> <p>Lithium Plus Minerals may be required to develop a local benefits plan.</p>	<ul style="list-style-type: none"> Clearly communicate that the workforce will be sourced locally where possible in key messaging and communication materials. Provide proactive information about contracting and employment opportunities, including local employment targets. Be up front about any local procurement or employment challenges or barriers. Include information about local opportunities in media releases. Develop a Local Employment Management Plan Develop a Local Supply Management plan Ensure local Aboriginal people are given priority followed by locals. Develop training programs in partnership with schools, CDU, etc.

Potential issue	Detail	Mitigation
		<ul style="list-style-type: none"> • Employ an Aboriginal person to work with Human Resources to mentor and provide assistance to Aboriginal employees.
Concerns about Indigenous employment and contracting opportunities	Local communities may be concerned about a lack of Indigenous representation at Lithium Plus Minerals which doesn't reflect the Aboriginal population in the area.	<ul style="list-style-type: none"> • Work with relevant Aboriginal employment and training providers to maximise Aboriginal employment and contracting opportunities. • Proactively meet with Belyuen local government and community members to maximise employment opportunities for people from Belyuen and the broader region. • Develop health programs in partnership to enable locals to pass medicals. • Establish, in partnership, a labour hire program that will allow for some additional flexibilities (i.e. 8 hour work shifts rather than 12 hours to start)
Cultural and heritage impacts	There may be concerns about impacts on sacred or sensitive sites and engagement with traditional Aboriginal owners.	<ul style="list-style-type: none"> • Provide detailed information on work done to date. • Engage with traditional Aboriginal owners throughout the project. • Traditional Custodians to be present during land clearances and during any ground disturbing activity – paid positions. • Ensure sacred sites are demarcated, protected and registered.

Potential issue	Detail	Mitigation
		<ul style="list-style-type: none"> Develop a Cultural Heritage register and a keeping Place in partnership with Aboriginal groups – consider a display area for artefacts
Falling spodumene price and suspension of Core Lithium’s mining activities	<p>The suspension of mining operations at Core Lithium’s Grants Mine following falling spodumene price raises concerns in the community about the sustainability and viability of lithium projects in the region, especially given the proximity of the Lei Project.</p> <p>Stakeholders are likely to question the economic feasibility, stability and longevity of lithium ventures in the region.</p> <p>Community members may wonder whether a new explorer/developer like Lithium Plus Minerals can navigate the challenges posed by market conditions.</p>	<ul style="list-style-type: none"> Communicate transparently about market challenges. Engage with the community, address concerns, and provide a clear roadmap for project sustainability.
Perceived affiliation with Core Lithium	Some stakeholders have the perception that Lithium Plus Minerals is associated with Core Lithium. This may lead to the assumption that Core Lithium will acquire Lithium Plus Minerals, potentially raising concerns about a lack of long-term presence in the community.	<ul style="list-style-type: none"> Communicate independence from Core Lithium. Address concerns about long-term commitment to the community.
Competition and comparison with Core Lithium	There may be confusion between Lithium Plus Minerals and Core Lithium among stakeholders and community members e.g. which company’s trucks are causing broken windscreens or driving dangerously.	<ul style="list-style-type: none"> Establish a clear and visible identification system for all Lithium Plus Minerals’ vehicles i.e. logos and colours. Establish a dedicated hotline and email address for reporting concerns.

Potential issue	Detail	Mitigation
Head office located interstate	<p>Risk of community distrust due to the company's office being located interstate.</p> <p>The physical distance between the head office and the local operations can create a perception of detachment. Community members may feel that decisions are made without a full understanding of the local context and its impact on the community.</p> <p>Differences in culture, regulations, and regional priorities between the head office and the local community can contribute to misunderstandings. Failure to appreciate and address these differences may lead to decisions that are not aligned with the community's needs and expectations.</p> <p>Community members may feel that decisions made at the head office may not fully account for the potential environmental and social impacts on the local community.</p>	<ul style="list-style-type: none"> • Prioritise proactive and transparent communication. • Establish local representation or liaison offices. Local representation regularly in contact with all stakeholders and rightsholders is essential. • Actively engage with the community to understand and address their concerns. Building trust is a continuous process that requires ongoing efforts to bridge the gap between the head office and the local community.
Length of project	<p>There could be some concerns from residents in the area about the length of the project and how long impacts will be experienced by those in the area.</p>	<ul style="list-style-type: none"> • Engage early with local community members. • Clearly communicate any changes to the project plan and mine life, and how that will affect the community.

Engagement

Engagement methodology

Using the International Association for Public Participation (IAP2) principles that guide good community engagement, Lithium Plus Minerals should engage with its stakeholders at the levels of inform, consult and involve.

Level of Engagement	Promise to the Public
<i>Inform</i>	<i>We will keep you informed.</i>
<i>Consult</i>	<i>We will keep you informed, listen to your concerns and provide feedback on how the public's input influenced the decision.</i>
<i>Involve</i>	<i>We will work with you to ensure your concerns are reflected in the alternatives developed and provide feedback on how the public's input influenced the decision.</i>
Collaborate	We will look to you for advice, ideas and solutions and incorporate those into the decisions as much as possible.
Empower	We will implement what you decide.
©International Association of Public Participation www.ipa2.org	

Guiding principals

The guiding principles (*Principles of Effective Community Engagement*) are:

- start consultation early
- focus on process more than outcomes
- engage with the appropriate community representatives – be inclusive
- send appropriate company representatives
- use suitable venues for engagement activities.

Engagement goals and objectives

This stakeholder engagement plan is designed to establish a robust engagement framework for the Lei Project, fostering proactive, transparent and collaborative relationships.

The objectives and goals of this plan are broadly to:

- identify key stakeholders for engagement and future update
- assess stakeholders, and create a stakeholder map and engagement grid to guide engagement
- devise a communications and implementation plan
- engage stakeholders as informed by the communications plan
- analyse stakeholder feedback and demonstrate the incorporation of feedback into project plans
- to ensure stakeholders are aware of Lithium Plus Minerals and intentions for the Lei Project.

Key strategies

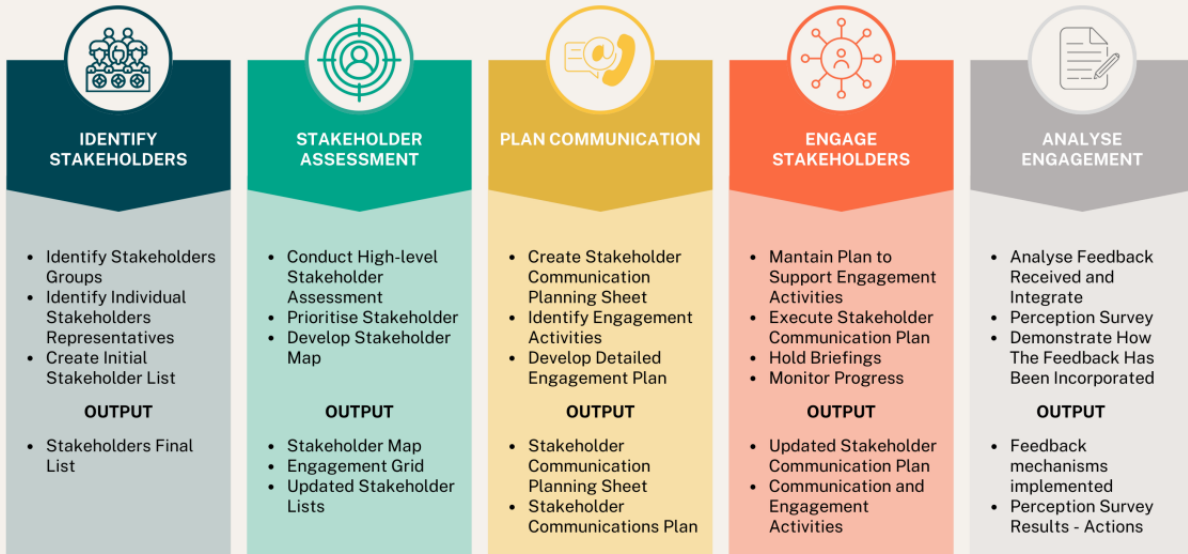
The key implementation strategies are to:

- proactively identify stakeholders and tailor approaches to reach them, for example phone calls, emails, face to face meetings and briefings
- develop solid planning that identifies stakeholders, issues and the best means of developing respectful, two-way communication with individuals and groups
- ensure key stakeholders receive objective information direct from the company rather than from media or third parties
- build relationships and make sure it is easy to contact the company to clarify issues and address rumours and misinformation
- give key stakeholders a chance to provide early input on issues that may affect them or project design and provide regular updates to these stakeholders
- a risk-based approach that devotes the greatest effort to stakeholders likely to experience the greatest level of impact – positive or negative – from the project, while raising awareness of all stakeholders in the project footprint on how they can get information and provide feedback.

The Stakeholder Engagement Plan is presented in the following diagram.

STAKEHOLDER ENGAGEMENT PLAN

PREPARED BY BINA SUSTAINABLE SOLUTIONS



Stakeholder analysis

The table below identifies the key stakeholders for the project, their area of interest, and the recommended engagement level and approach.

To determine the appropriate level of engagement for each stakeholder, the likely impact of the project on stakeholders was assessed, their likely level of interest or concern about the project and their influence in the community.

The engagement approach for each stakeholder was determined by their engagement level and the most appropriate communication methods to reach and engage with each stakeholder.

Stakeholder	Background and likely interest	Approach	Engagement level
Lithium Plus Minerals Ltd			
Lithium Plus Minerals Board	<ul style="list-style-type: none"> • Successful delivery of the project • Community acceptance (social licence to operate) • Clear approvals pathway. 	<ul style="list-style-type: none"> • Updates through Chief Executive Officer • Scheduled updates via board papers. 	Involve
Lithium Plus Minerals Management	<ul style="list-style-type: none"> • Successful delivery of the project • Community acceptance (social licence to operate) • Clear approvals pathway • Good relationships with the community to ensure the projects proceed as smoothly as possible. 	<ul style="list-style-type: none"> • Involvement with strategy. 	Involve
Employees	<ul style="list-style-type: none"> • Successful delivery of the project • Community acceptance (social licence to operate) • Clear approvals pathway 	<ul style="list-style-type: none"> • Internal communications • CEO or GM briefings • Quarterly townhalls 	Involve

Stakeholder	Background and likely interest	Approach	Engagement level
	<ul style="list-style-type: none"> • Good relationships with the community to ensure the projects proceed as smoothly as possible. 	<ul style="list-style-type: none"> • Internal announcements • Intranet website • Scheduled safety meetings • Daily prestart meeting • Email community newsletter to all staff and encourage employees to send local stories for inclusion in the newsletter. 	
Shareholders	<ul style="list-style-type: none"> • Successful return on investment • Good reputation of the company • Clear timelines for the project • Smooth regulatory approvals. 	<ul style="list-style-type: none"> • Investor updates • Media coverage. 	Inform
Key contractors	<ul style="list-style-type: none"> • Clear scope and information to support their work 	<ul style="list-style-type: none"> • Involvement in the project. 	Inform
Australian Government			
Member for Lingjari	<ul style="list-style-type: none"> • Impacts on electorate • Impacts on the bush of electorate • Preservation of bush lifestyle for electorate. 	<ul style="list-style-type: none"> • Email community and stakeholder updates • Briefings as requested • Thought leadership and networking opportunities at events and conferences • LinkedIn updates • Media. 	Inform

Stakeholder	Background and likely interest	Approach	Engagement level
Member for Solomon	<ul style="list-style-type: none"> The operation is close to the Lingiari/Solomon boundary Management of environmental and social impacts Opportunities for Darwin and Palmerston businesses 	<ul style="list-style-type: none"> Email community and stakeholder updates Briefings as requested Thoughts leadership and networking opportunities at events and conferences LinkedIn updates Media. 	Inform
Northern Territory Government – Ministers, Members of Parliament and Departments			
Chief Minister Minister’s Chief of Staff	<ul style="list-style-type: none"> 2024 Election Opportunities for Darwin and Palmerston businesses Managing environmental and social impacts Promoting growth of the North and economic development in regional centres. 	<ul style="list-style-type: none"> Email community and stakeholder updates Briefings as requested Thoughts leadership and networking opportunities at events and conferences LinkedIn updates Media. 	Inform
Minister for Mining Minister’s Chief of Staff Chief Executive Officer, Department of Mining and Energy	<ul style="list-style-type: none"> Consistent and transparent communication on the project 2024 Election Opportunities for Darwin and Palmerston businesses Jobs for locals. 	<ul style="list-style-type: none"> Email community and stakeholder updates Briefings as requested Thoughts leadership and networking opportunities at events and conferences LinkedIn updates Media. 	Consult
Member for Daly	<ul style="list-style-type: none"> The project is in this electorate 	<ul style="list-style-type: none"> Email community and stakeholder updates Briefings as requested 	Consult

Stakeholder	Background and likely interest	Approach	Engagement level
	<ul style="list-style-type: none"> • Consistent and transparent communication on the project • 2024 Election • Environmental management and transparency. 	<ul style="list-style-type: none"> • Thoughts leadership and networking opportunities at events and conferences • LinkedIn updates • Media. 	
<p>Opposition Leader</p> <p>Shadow Minister for Mining</p>	<ul style="list-style-type: none"> • 2024 Election • Environmental management and transparency • Economic and employment opportunities for the NT • Being proactive in communicating and engaging with the community • Managing impacts of mining activity. 	<ul style="list-style-type: none"> • Email community and stakeholder updates • Briefings as requested • Thoughts leadership and networking opportunities at events and conferences • LinkedIn updates • Media. 	Inform
<p>NT Environment Protection Authority</p> <p>Chair</p> <p>Manager of Environmental Assessments</p>	<ul style="list-style-type: none"> • A good regulatory process that is transparent, open and accountable, outlining all potential impacts supported by professional studies to address them. 	<ul style="list-style-type: none"> • Regulator briefing • Advise of any issues as per regulatory processes. 	Consult
<p>Department of Lands Planning and Environment</p> <p>Minister for Lands, Planning and Environment</p>	<ul style="list-style-type: none"> • Good environmental management. Department covers water, land resource management and environmental issues. • Updates on the Lei Project • New legislative requirements around water licensing 	<ul style="list-style-type: none"> • Advise of any issues as per regulatory processes • Technical meetings with department on water and environment issues. 	Consult

Stakeholder	Background and likely interest	Approach	Engagement level
Chief Executive Officer Water Resources Senior Manager Water Monitoring			
Department of Logistics and Infrastructure, Minister for Logistics and Infrastructure Chief Executive Officer and Executive Director Transport Infrastructure Executive Director Logistics Strategy, Policy and Legislation	<ul style="list-style-type: none"> Interested in transport planning and infrastructure, road safety and impacts on government roads 	<ul style="list-style-type: none"> Briefings as requested, engagement on road management Consult on road and traffic management 	Consult
Department of Education Chief Executive Officer	<ul style="list-style-type: none"> Impacts to Berry Springs Primary School, including road safety, dust, noise and general amenity Updates to the project, changes and impacts of those changes on the school. 	<ul style="list-style-type: none"> Send project fact sheet and offer briefing to Department of Education and to Berry Springs Primary School and to Berry Springs School Representative Body 	Consult

Stakeholder	Background and likely interest	Approach	Engagement level
General Manager Engagement and Partnerships Berry Springs Primary School Principal Berry Springs School Representative Body Secretary		<ul style="list-style-type: none"> Engage with school through Community Grants Program and other partnership opportunities 	
Essential services Telstra Power and Water	<ul style="list-style-type: none"> Supply of power and impacts to power grid Impacts to Telstra cable at the new project site. 	<ul style="list-style-type: none"> Technical meetings 	Inform
NT Police, Fire and Emergency Services Chief Fire Officer Bushfires NT Vernon Arafura Management Zone	<ul style="list-style-type: none"> Bushfire and backburning management plans Potential pressure on emergency services, especially regarding response to road accidents and employee incidents Ability to respond to road crashes Mutual aid agreement Sharing of emergency response plans. 	<ul style="list-style-type: none"> Briefings as needed Technical meetings Consult on road safety Consult on fire management plans 	Consult

Stakeholder	Background and likely interest	Approach	Engagement level
St John Ambulance	<ul style="list-style-type: none"> • Potential pressure on emergency services, especially regarding response to road accidents and employee incidents • Ability to respond to road crashes • Mutual aid agreement • Sharing of emergency response plans. 	<ul style="list-style-type: none"> • Briefings as needed • Consult on road safety 	Consult
Local government			
Belyuen Community Government Council Chief Executive Officer	<ul style="list-style-type: none"> • Nearest Indigenous community • Potential local jobs • Impacts on local amenity • Community partnership and investment opportunities • Traffic management and safety • Updates to the project 	<ul style="list-style-type: none"> • Email community and stakeholder updates • Briefings as requested • Community meetings as requested and for important updates • Present to Elected Members meetings as requested and for important updates • Engage with school through Community Grants Program and other partnership opportunities 	Consult
Litchfield Shire Council Mayor Chief Executive Officer Councillor South Ward	<ul style="list-style-type: none"> • The Lei mine site is in Unincorporated (Cox-Daly) Area close to the border of Litchfield Shire Council's South Ward. • Opportunities for local businesses • Impacts on local amenity • Traffic management and safety • localised impacts for the Berry Springs community. 	<ul style="list-style-type: none"> • Email community and stakeholder updates • Briefings and present to Elected Members as requested 	Consult

Stakeholder	Background and likely interest	Approach	Engagement level
	<ul style="list-style-type: none"> Very positive about job opportunities for locals and concerned about water use. 		
Wagait Shire Council Chief Executive Officer	<ul style="list-style-type: none"> Inform of any operation sub-contract work Progress updates Traffic safety measures Planned upgrades to road infrastructure. 	<ul style="list-style-type: none"> Email community and stakeholder updates Briefings as requested Community meetings as requested and for important updates Present to Elected Members meetings as requested and for important updates Engage through Community Grants Program and other partnership opportunities 	Consult
City of Palmerston Chief Executive Officer General Manager Infrastructure	<ul style="list-style-type: none"> Any impacts to traffic through Palmerston, especially Elrundie Avenue Any impacts from Drive In Drive Out workforce Opportunities for local businesses Any plans to have a local site office. 	<ul style="list-style-type: none"> Email community and stakeholder updates Briefings and present to Elected Members as requested 	Inform
Aboriginal groups			
Northern Land Council Chief Executive Officer	<ul style="list-style-type: none"> Identifying and assisting native title party/s to establish native title claim under the <i>Native Title Act</i> The project area is located on land that could be subject to native title claim however the area is currently not under claim or determination Ensure consistent and transparent consultation 	<ul style="list-style-type: none"> Email community and stakeholder updates Briefings as requested Consult regarding any native title issues Follow the required future act process under the <i>Native Title Act</i> for the grant of the Mineral Lease and negotiate in good faith with native 	Consult

Stakeholder	Background and likely interest	Approach	Engagement level
	<ul style="list-style-type: none"> Ensure protection of sacred sites and other native title interests. 	<p>title party/s about any impact of the grant, including matters such as the protection of sacred sites and other native title interests.</p>	
<p>Aboriginal Areas Protection Authority</p> <p>Chief Executive Officer</p>	<ul style="list-style-type: none"> Role is to determine whether any sacred sites could be affected by the project and issue certificates. Will expect authority certificate application to be made for the project to ensure the protection of sacred sites Authority certificates unrelated to the project have previously been issued over the project area, and no sites have been identified A restricted work area unrelated to the project and for unrelated activities does overlay the project area. 	<ul style="list-style-type: none"> As per regulatory and legislative processes Consult regarding the protection of sacred sites Undertake searches for information to determine any known sacred sites Review any previously issued authority certificates over the project area Apply for authority certificate and/or seek validation of any certificate issued by or on behalf of any native title party/s. 	<p>Consult</p>
<p>Heritage branch, Territory Families</p>	<ul style="list-style-type: none"> The Heritage branch works with the community to conserve the unique and diverse heritage of the Northern Territory, protected by the <i>Heritage Act</i> The Heritage branch have advised that there are no known declared heritage places or objects or Aboriginal or Macassan archaeological heritage places or objects in the project area The Heritage branch have recommended further investigations of the project area to determine if any undetected heritage sites exist and recommend (if required) measures to mitigate impacts of proposed works. 	<ul style="list-style-type: none"> Make enquiries to the Heritage branch regarding the existence of historical and cultural heritage that may be affected by the project. Engage an archaeological consultant to make recommendations regarding heritage. 	<p>Consult</p>

Stakeholder	Background and likely interest	Approach	Engagement level
Larrakia Nation Aboriginal Corporation Chief Executive Officer Board Chair	<ul style="list-style-type: none"> Interested in jobs and training opportunities. Respect for local culture and connections to country. No disturbance of sacred or other special cultural sites. 	<ul style="list-style-type: none"> Send project fact sheet and offer briefing 	Consult
Larrakia Development Corporation Chief Executive Officer	<ul style="list-style-type: none"> Jobs and training opportunities. Respect for local culture and connections to country. Access to good information about the project, including employment and contracting opportunities. 	<ul style="list-style-type: none"> Email community and stakeholder updates Briefings as requested Knowledge sharing and networking opportunities at events and conferences LinkedIn updates 	Consult
Kenbi Rangers	<ul style="list-style-type: none"> Contract and job opportunities for the Kenbi Rangers Can provide site security, slashing, road builds and weed control Have bus to transport workers. Interested in contract for transport of workers from the ferry to site. 	<ul style="list-style-type: none"> Working relationship with Lithium Plus Minerals staff through existing contracts Briefings as requested 	Consult
Indigenous Women in Mining Resources Association (IWMRA) Chief Executive Officer	<ul style="list-style-type: none"> Job opportunities for Indigenous women Keeping informed so IWMRA can upskill their workers for the projects Sponsorship opportunities 	<ul style="list-style-type: none"> Email community and stakeholder updates Briefings as requested 	Consult
Affected communities			
Berry Springs	<ul style="list-style-type: none"> Employment and contracting opportunities 	<ul style="list-style-type: none"> Fact sheet to be made available in local elected representatives' offices 	Consult

Stakeholder	Background and likely interest	Approach	Engagement level
Belyuen Tumbling Waters Wagait Dundee Beach Wider Darwin region	<ul style="list-style-type: none"> Impacts to Cox Peninsula Road and traffic Impacts on community cohesion and social infrastructure Impacts to amenity including noise, dust. 	<ul style="list-style-type: none"> 1800 hotline and email address Social media – LinkedIn and Facebook Fact sheets and information to be distributed to the Wagait Beach Supermarket, local newsletter Wagait Watch, Dundee Social and Recreation Club, Sand Palms Resort Old Bynoe, Dundee Progress Association and the Rural Residents’ Rights Group, Wagait Shire Council Progress Association, Berry Springs Shopping Village and any other appropriate avenues including individuals who asked to be kept informed during previous consultation. Media coverage. 	
Territory Wildlife Park	<ul style="list-style-type: none"> Impacts to Cox Peninsula Road and traffic. 	<ul style="list-style-type: none"> Send fact sheet and relevant information updates. 	Inform
Industry and other interest groups			
Environment Centre of the NT (ECNT) Director	<ul style="list-style-type: none"> Lead environmental group for the Northern Territory Strong interest in activities that may impact any aspect of the environment Will have concerns about water use and management and rehabilitation and closure standards. 	<ul style="list-style-type: none"> Email community and stakeholder updates Briefings as requested 	Consult
Amateur Fishermen’s Association NT (AFANT) Executive Officer	<ul style="list-style-type: none"> Very strong membership base. Strong commitment to ensuring the protection of the quality of the recreational fishing in the Northern Territory 	<ul style="list-style-type: none"> Email community and stakeholder updates Briefings as requested 	Consult

Stakeholder	Background and likely interest	Approach	Engagement level
Minerals Council of Australia, NT Division Executive Director	<ul style="list-style-type: none"> Interested in the success of the industry and removing barriers in the regulatory processes A positive environment in which to do business 	<ul style="list-style-type: none"> Email community and stakeholder updates Briefings as requested 	Inform
Chamber of Commerce NT Chief Executive Officer	<ul style="list-style-type: none"> Interested in benefits for local businesses and good communication to allow businesses to prepare. Jobs and training opportunities and building the local capacity to provide services and supplies to mining. 	<ul style="list-style-type: none"> Email community and stakeholder updates Briefings as requested 	Consult
Industry Capability Network (ICN) Chief Executive Officer	<ul style="list-style-type: none"> As above Will be interested to ensure the company provides early information on opportunities to the ICN. Can give advice on packaging work to suit local capabilities. Shares information on projects through its newsletter. 	<ul style="list-style-type: none"> Email community and stakeholder updates Briefings as requested 	Consult
Palmerston and Darwin businesses	<ul style="list-style-type: none"> Good communication about opportunities to ensure local businesses don't miss out to interstate firms. Need to manage expectations about the relatively small scale of the project. 	<ul style="list-style-type: none"> Through ICN and Chamber, keep informed Community Grants Program 	Inform
Cattlemen's Association Chief Executive Officer	<ul style="list-style-type: none"> Peak body for pastoral industry Project is located on vacant Crown land, but pastoral activities occur in the region 	<ul style="list-style-type: none"> Keep informed with regular updates via phone and email 	Inform

Stakeholder	Background and likely interest	Approach	Engagement level
Landowners	<ul style="list-style-type: none"> Landholders in exploration area May be concerned about receiving compensation, land rehabilitation and environmental impacts from exploration 	<ul style="list-style-type: none"> Brief landholder in person on exploration activity Keep informed with regular updates via phone and email 	Consult
Media			
Local media (ABC, NT News in particular)	<ul style="list-style-type: none"> Good local stories, particularly for business media, and general about impacts of the projects. Provide updates on number and value of local contracts awarded. 	<ul style="list-style-type: none"> Brief ABC Country Hour Releases to NT News business pages in particular 	Inform
National resource media	<ul style="list-style-type: none"> Good stories and advertising Promote good news around use of lithium in renewable energy solutions 	<ul style="list-style-type: none"> Send media releases 	Inform

Key messages

The following key messages can be used to communicate with stakeholders and the community about the Lei Project.

Issue, interest or concern	Key messages
General information about the project	<ul style="list-style-type: none"> Lithium Plus Minerals is a pure-play lithium company focused on developing several drill sites in the Northern Territory. We hold a large portfolio of granted mineral tenements in the Northern Territory covering 1,468 km², 297 km² of which forms the company's Bynoe Lithium Project area. The Bynoe Lithium Project, which includes the Lei deposit, comprises 11 granted tenements within the Litchfield Pegmatite Belt, an area known for significant lithium discoveries since 2017. The Lei Project is located on the Cox Peninsula, 50 km south of Darwin and adjacent to Core Lithium's Finniss Lithium Project. In December 2023, we announced a Mineral Resource Estimate of 4.1 million tonnes at 1.43% lithium oxide at Lei. We plan to develop the Lei Project and will to apply for a Mineral Lease and submit a referral for Environmental Assessment to the Northern Territory Environment Protection Authority (NT EPA) soon. Our project is expected to utilise underground mining methods, given the geological characteristics of the Lei deposit, including depth, geometry, grade, and continuity of mineralisation. Lei is anticipated to operate as a Direct Shipping of Ore (DSO) operation, transporting pegmatite material directly to offtake partners. Additionally, there is potential to conduct on-site gravity separation or ore sorting to improve the grade of the shipped material.
Road safety and infrastructure communication	<ul style="list-style-type: none"> We recognise the importance of assessing all potential impacts associated with the development at Lei. Impacts to road safety will be comprehensively investigated as part of our environmental assessment. We are committed to mitigating the impact on road safety by implementing measures to minimise the number of trucks on Cox Peninsula Road. By not rushing mining operations, we aim to keep the volume of traffic associated with the project as low as possible. We are dedicated to ensuring the safety of our community and stakeholders throughout the project's development process.

Issue, interest or concern	Key messages
	<ul style="list-style-type: none"> • Direct concerns regarding road infrastructure and safety should be directed to the Department of Infrastructure, Planning and Logistics (DIPL). While road investment plans are not in our current scope, we are actively collaborating with DIPL and government agencies to address any concerns and explore solutions. • The possibility of on-site ore sorting technology will reduce the volume of material transported off-site, thereby minimising the impact on road traffic. • We are committed to providing regular updates on our progress and initiatives to ensure ongoing transparency and accountability in our road safety efforts. • Our impact on road safety is expected to be primarily short-term, lasting approximately 4-5 years. During this period, we are committed to minimising disruptions and ensuring a safe environment for road users.
Impacts to amenity such as dust and noise	<ul style="list-style-type: none"> • The underground operation at Lei will be largely hidden from view, minimising visual impact on surrounding communities. • Underground mining at Lei will require minimal surface disturbance compared to open pit mining methods. With less exposed rock surfaces, there is less potential for dust generation from activities like blasting and excavation. The enclosed space within the underground mine, combined with ventilation systems and noise reduction methods, will effectively contain dust and noise during mining operations. • To further mitigate dust emissions, stockpiles generated during mining activities will be backfilled underground whenever feasible.
Haul truck movements	<ul style="list-style-type: none"> • The project area is located near Observation Hill and Kangaroo Flats in the Bynoe Region. Access from Darwin is via the Stuart Highway, then westwards on Cox Peninsula Road to Observation Hill, and via Fog Bay Road (Dundee Road) to Charlotte River. • Future haul trucks would travel from the site along Cox Peninsula Road, then onto the Stuart Highway via Noonmah, reaching Darwin Port for shipment to overseas markets.
Local employment and contract opportunities	<ul style="list-style-type: none"> • We are committed to sourcing workers from Darwin, Palmerston and surrounding areas, placing a high priority on recruiting from the local workforce whenever possible. • The Lei Project, located just 50 km south of Darwin, will facilitate a convenient drive-in, drive-out arrangement for its workforce. By tapping into the local talent pool and capitalising on its proximity to the city, the project eliminates the need for an accommodation camp.

Issue, interest or concern	Key messages
Traditional Aboriginal owners and sacred site custodians	<ul style="list-style-type: none"> • We intend to negotiate in good faith about the grant of mineral lease with any native title party established with the assistance of the Northern Land Council or other representative body, and through the native title agreement making process, ensure the protection of sacred sites and other native title interests. • We intend to consult with the Aboriginal Areas Protection Authority (AAPA) and make application for authority certificate, and/or validation of any site clearance undertaken through any native title agreement reached as may be recommended by AAPA.
Aboriginal employment and contracting opportunities	<ul style="list-style-type: none"> • We intend to engage with relevant Aboriginal employment organisations to explore and maximise opportunities for Aboriginal employment and contracting within our project. • We are committed to working with Indigenous employment and training providers to maximise employment opportunities with people from Belyuen, the closest Aboriginal community, and the broader region as part of our ongoing project development efforts.
Water use and sources	<ul style="list-style-type: none"> • We will adopt a direct shipping operation model, meaning there will be no processing of lithium on site. This approach significantly reduces water demand compared to traditional processing methods. • Water required for operations will be assessed and mitigation measures adopted to negate any potential strain on local water resources. • Underground mining operations also generally requires less water than open pit mining, as there is less exposure of rocks to rainfall and runoff. This minimises the need for significant water management infrastructure to control flow, prevent flooding and treat contaminated water before it is discharged into the environment.

Issue, interest or concern	Key messages
Threatened flora and fauna species	<ul style="list-style-type: none"> • The Lei Project may potentially host threatened flora and fauna species. Work areas will undergo threatened species assessment and assess potential avoidance and mitigation measures or as required. • Work areas may also contain vegetation providing critical habitat for fauna. These areas will be avoided where possible to protect their ecological value. • Further studies will be undertaken as a crucial part of the environmental assessment.
Impacts to historical heritage and culture	<ul style="list-style-type: none"> • Enquiries made to the Heritage branch indicate that there are no known heritage places or objects, or Aboriginal or Macassan archaeological heritage places or objects in the project area. • There are however known heritage sites in the Bynoe Region and in relatively proximity to the project. • The Heritage Branch have recommended a heritage survey be undertaken. • Lithium Plus Minerals intend to engage an archaeological consultant to make any recommendations for the project area.
Timeframes	<ul style="list-style-type: none"> • A Mineral Lease application was submitted in May 2024, and referral for Environmental Assessment to the NT EPA is expected to be submitted by the quarter ending 30 September 2024 • Comprehensive studies to assess environmental and social impacts associated with the development at the Lei Project, ensuring a comprehensive understanding of potential implications, commenced in 2022 and are ongoing. Subsequently, we will prepare and submit the follow up environmental assessment to the NT EPA for evaluation. • Timeframe for construction is 2026, with mining commencing 2027 and closure timing in 2032/33.

Engagement tools

The recommended tools to engage with stakeholders and the community are outlined below.

Tool	Details
Appoint a local Stakeholder Engagement Manager	<p>Lithium Plus Minerals could consider appointing a Stakeholder Engagement Manager to demonstrate an ongoing commitment to community engagement.</p> <p>The objective would be for the individual to bring local knowledge and connections, establish and build relationships with key stakeholders, foster trust and credibility, and improve Lithium Plus Minerals’ ability to navigate complex stakeholder relationships and local dynamics.</p>
Key messages	<p>Refine key messages (using the key messages from this plan as a starting point) and Q&As for internal use only, to ensure stakeholders are provided with accurate and consistent information. The key messages will be used to guide the content for materials and the Q&As will provide responses to key issues or questions that may be raised.</p>
Website	<p>Update the project page to include community updates, newsletters and contact details (hotline number and feedback email).</p> <p>Introduce a user-friendly contact form to simplify the process for stakeholders to contact the company.</p>
Briefings	<p>Offer briefings to priority stakeholders.</p> <p>A minutes template can be used to record all meetings, attendees, key issues raised and commitments given, and to support reporting.</p>
Social media	<p>Develop a social media plan with strategies to establish a Facebook and LinkedIn page for the project.</p> <p>The social media plan should include relevant protocols for addressing concerns and negative commentary, as well as content ideas.</p> <p>Share ESG and community focused updates on Lithium Plus Minerals’ social media profiles e.g. local stories, attendance and involvement at community events, environmental initiatives, working with local rangers.</p> <p>Consider establishing a Facebook profile once the project has progressed to engage at a grassroots level with the Darwin and Greater Darwin community, NT Government and local media.</p>

Tool	Details
Dedicated email address	<p>Establish a dedicated generic email address to send and receive stakeholder emails. Record all feedback in a comprehensive database to track and address concerns or feedback.</p> <p>Respond promptly to community enquiries or reports to demonstrate a commitment to transparency and addressing concerns in a proactive manner.</p>
1800 hotline	<p>Establish a dedicated 1800 community hotline to capture community enquiries and feedback. This would be prominently featured on all communication materials.</p> <p>Prepare a phone script and a list of approved Frequently Asked Questions (FAQs) to ensure consistent and well-informed responses to all enquiries.</p> <p>Consider establishing a complaints and grievances framework that allows the public to raise issues, including contractor-related claims, with the aim of resolving challenges before they escalate.</p>
Newsletters	<p>Develop regular newsletters (starting biannually) for stakeholders, providing brief updates on project developments, local employment opportunities and environment initiatives.</p> <p>Email a digital copy to local stakeholder and leave printed copies in key community locations e.g. Berry Springs school, petrol station, Tumbling Waters Holiday Park.</p>
Media releases	<p>Distribute proactive media releases at key project milestones. Include ABC, Channel 9, Sky, NT News, Paydirt, The West Australian, The Australian, AFR etc.</p>
Factsheets	<p>Develop factsheets summarising key project details, benefits, community and environmental commitments. Consider translating materials into different Aboriginal languages to enhance accessibility.</p>
Community information sessions	<p>Conduct public information sessions for stakeholders and community members to discuss and provide updates. Tailor the sessions based on stakeholder feedback and interest.</p>
Q&As	<p>Develop Q&As for internal use only to ensure stakeholders are provided with consistent and accurate information. Use key messages to guide content creation and address key issues or questions.</p>
Frequently Asked Questions	<p>Develop public facing FAQs with consistent and accurate project information. Display these on the project webpage.</p>

Tool	Details
Community grants	Consider launching a program to offer community grants which support inclusive, grassroots, community-led initiatives that provide benefits and create opportunities across the community.
Information stalls	<p>Information stalls at various community locations to engage with local residents and communities:</p> <ul style="list-style-type: none"> • Berry Springs Markets • Berry Springs Shopping Village • Belyuen community (or alternative approach, in line with recommendations from Belyuen) • Wagait Beach Supermarket <p>The stalls will operate for several hours during peak times (as per recommendations from council representatives) at each location.</p> <p>The displays should include the following:</p> <ul style="list-style-type: none"> • Fact sheets for distribution • Large format map to show the location of the projects in relation to surrounding areas.
Events	Have a booth at major Northern Territory resources events including Mining the Territory conference as part of NT Resources Week (18-19 September 2024) and the Facing North Conference (around August but date TBC).

Communication protocols

- Bina Sustainable Solutions will be the media representatives and stakeholder spokesperson on local issues.
- All company staff to be thoroughly briefed and issued with a Q&A to ensure consistent messaging.
- A ‘no surprises’ approach to announcements or issues, ensuring the company approves all statements and materials before they are released, and is aware in advance of key milestone announcements and stakeholders are informed of developments in an orderly and strategic way.
- Plain-English materials except for technical audiences.
- All stakeholder feedback to be recorded and shared.

Implementation plan

The activities outlined in this table are scheduled to occur prior to the submission of an Environmental Assessment referral by September 2024.

Activity	Detail	Timing	Resource
Develop materials	Develop materials (writing and design) for stakeholder and community engagement including: <ul style="list-style-type: none"> • Plain English project fact sheet • PowerPoint presentation for briefings • Q&A and topic guide • Update web copy for project page. • Infographics, videos for presentation (consider low literacy) 	By early March August - September	BINA Lithium Plus for approvals
Establish 1800 hotline and feedback email address	<ul style="list-style-type: none"> • Set up a dedicated community hotline number (1800 is a free call). • Set up a feedback email address. • Advertise on all community materials including fact sheet and website. 	By end of February If quotes already received this is just a matter of finance terms to get going, if starting from scratch will need 4 weeks – Mid July. The advertising component will happen in August earliest.	Lithium Plus BINA for advertising component
Offer briefings	<ul style="list-style-type: none"> • Email all stakeholders in the first instance with a project update and attach a fact sheet. Ensure this email is sent from an individual Lithium Plus Minerals address (CC in the feedback email). • Arrange face to face briefings via phone and email with priority stakeholders to provide project update, answer questions and seek feedback. 	By early March August – September	Lithium Plus BINA on behalf of Lithium Plus

Activity	Detail	Timing	Resource
	<ul style="list-style-type: none"> • Suggested priority stakeholders include: <ul style="list-style-type: none"> ○ NT Government departments (Logistics, Planning and Environment) and relevant Ministers and Opposition Leader. ○ Local government (Belyuen Community Government Council, Wagait Shire Council, and Litchfield Shire Council). ○ Local elected representative (Member for Daly). ○ NLC, Larrakia Nation, Larrakia Development Corporation and Kenbi Rangers. ○ Local industry associations (Chamber of Commerce, Industry Capability Network NT, and NT Minerals Council). ○ Environment Centre NT. • Bring along fact sheets to meetings for stakeholders to distribute and email a copy following each meeting. BINA to develop fact sheets • A minutes template to record all meetings, attendees, key issues raised and commitments given. BINA to develop minutes template 		
Hold stakeholder briefings	<ul style="list-style-type: none"> • As above with priority stakeholders. • BINA to develop a register for feedback received during briefings 	By end of April September	Lithium Plus BINA for attending, supporting, feedback gathering, response preparedness
Hold community displays	<ul style="list-style-type: none"> • Arrange community pop-up information stalls in 4 locations or as per feedback from councils. 	By end of May Late September early October	Lithium Plus BINA to arrange

Activity	Detail	Timing	Resource
	<ul style="list-style-type: none"> • Locations could include: <ul style="list-style-type: none"> ○ Berry Springs Markets ○ Berry Springs Shopping Village ○ Belyuen community (or alternative approach, in line with recommendations from Belyuen) ○ Wagait Beach Supermarket. • BINA to conduct perception survey (brief 10 questions +/-) on tablets at each information stall. 		and attend (local presence) with Lithium Plus
Next steps	<ul style="list-style-type: none"> • Consider the feedback received and integrate where appropriate. • Provide overview of perception survey to key stakeholders as appropriate. • Maintain active engagement with stakeholders through various channels and promptly provide requested information. Develop calendar to inform community when local representatives of Lithium Plus Minerals will be in Berry Springs, Belyuen and Wagait Beach. Update notice boards. Suggest monthly presence minimum to start with, weekly during construction and daily when operational (available daily via phone, email and regular community visits). • Close the feedback loop and demonstrate how the feedback has been incorporated. 	Ongoing	Lithium Plus BINA