

SECTION 14 INCIDENT REPORT (*Waste Management and Pollution Control Act*)

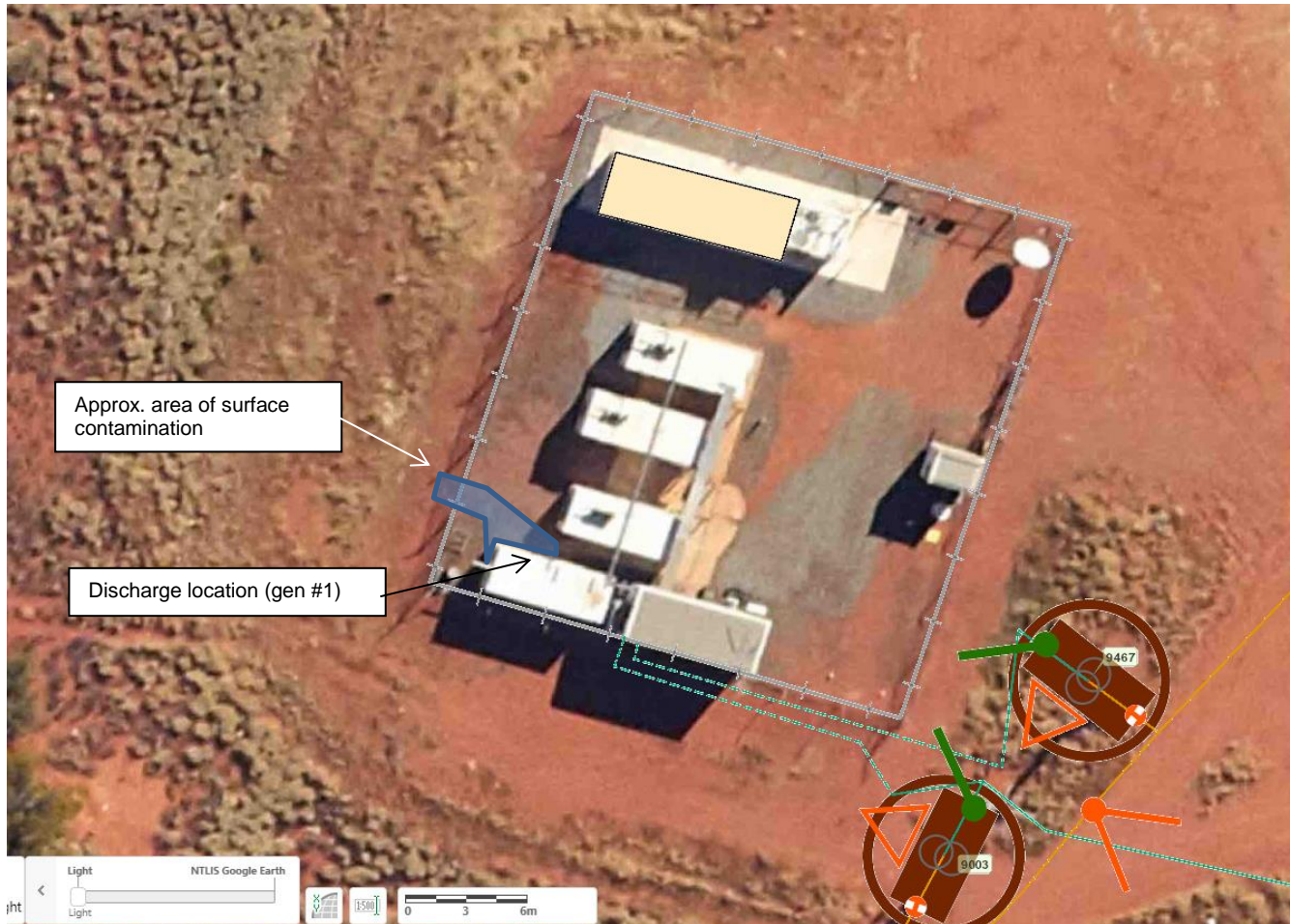
Date and Time of Notification:	Tuesday 5 th April 2022
Person / Company:	Power and Water Corporation (PWC)
Incident:	Wilora (Stirling) power station diesel fuel leak

(a) the incident causing or threatening to cause pollution	<p><i>i. Description of the waste that was discharged.</i></p> <p>Diesel fuel</p> <p><i>ii. Volume of the waste that was discharged.</i></p> <p>The volume of diesel is estimated to be around 12,000 litres that spilled, based on tank fuel dips and calculations of average fuel use. The majority having escaped the generator's container building and seeped into the surrounding soil.</p>
(b) the place where the incident occurred	<p><i>i. Description of the PWC asset from which the discharge occurred.</i></p> <p>Generator number 1 within the Wilora (Stirling) power station, from a faulty fuel float shut off valve, caused by a hole in the float within the shut off valve.</p> <p><i>ii. GPS coordinates of the discharge point from the PWC asset, and the final coordinates of the final discharge point.</i></p> <p>Discharge Point: 133.7298640, -21.7402612 Final Discharge Point: 133.7298187, -21.7402278</p> <p><i>iii. Indicate any locations nearby to the discharge point where public can gain ready-access, such as public open spaces through which the discharge moves.</i></p> <p>There is only a very small area outside the power station compound where the public has access to the spill site; the vast majority is within the power station's fenced compound. Temporary fencing will be erected to eliminate access by pedestrians.</p>
(c) the date and time of the incident	<p><i>i. The time and date of commencement and cessation of the discharge.</i></p> <p>The leak was first detected at 07:45hrs on the 4th April 2022. With the spill estimated to have happened over an approximately 13-hour period</p>

	<p>over the weekend. The spill was stopped immediately after becoming aware of it.</p> <p><i>ii. How PWC were notified, or became aware of the discharge.</i></p> <p>PWC Environmental Services first became aware of the event at 16:54hrs on the 4th March 2022 via notification from the Mechanical Coordinator.</p> <p><i>iii. The process by which the discharge occurred.</i></p> <p>The leak is due to a faulty fuel shut off valve, the float inside the shut off valve had a hole in it, causing it to fill up with diesel and hence not function as a float anymore, making the shut off valve inoperable, resulting in an overflow from the breather valve.</p> <p><i>iv. The reason why the discharge occurred.</i></p> <p>A faulty fuel shut off valve.</p>
(d) how the pollution has occurred, is occurring or may occur	As per (c) iii & (c) iv.
(e) the attempts made to prevent, reduce, control, rectify or clean up the pollution or resultant environmental harm caused or threatening to be caused by the incident	<p><i>i. Confirmation signage and fencing has been erected, as appropriate.</i></p> <p>The spill largely occurred within the fenced power station compound, and only a small affected area is outside the fence line. Where needed, temporary fencing will be erected, to eliminate access by pedestrians.</p> <p><i>ii. Decontamination of the site as appropriate.</i></p> <p>The ESO has cleaned the diesel spilt within the power house floor utilising spill kit materials.</p> <p>The ESO is sourcing plastic sheeting to cover the contaminated soils to prevent human contact, and assist with shielding from any potential weather events.</p> <p>A civil contractor will attend the site this Thursday, and carry out an initial inspection of the extent of the spill and carry out any immediate excavation of contaminated soils if possible and safe to do so.</p> <p>Environmental consultants have also been engaged to undertake a preliminary site investigation and assist in the remediation of the spill, in consultation with PWC staff. More details will be provided as they become available.</p>
(f) the identity of the person notifying the NT EPA	PWC Environmental Team on behalf of Power Services

SECTION 14 INCIDENT REPORT (*Waste Management and Pollution Control Act*)

Appendix A – Location map (Wilora (Sterling) power station compound).



Appendix B – Photographs of the spill site.



