

Container Deposit Scheme Quarterly Report

1 October to 31 December 2014

Northern Territory Environment Protection Authority

GPO Box 3675

Darwin

Northern Territory 0801

© Northern Territory Environment Protection Authority 2015

Important Disclaimer

This document has been prepared with all due diligence and care, based on the best available information at the time of publication. Any decisions made by other parties based on this document are solely the responsibility of those parties.

The Northern Territory Environment Protection Authority and Northern Territory of Australia do not warrant that this publication, or any part of it, is correct or complete. To the extent permitted by law, the Northern Territory Environment Protection Authority and Northern Territory of Australia (including their employees and agents) exclude all liability to any person for any consequences, including but not limited to all losses, damages, costs, expenses and other compensation, arising directly or indirectly from using, in part or in whole, any information or material contained in this publication.

1	Introduction	1
1.1	Legislation.....	1
1.2	Approved refund markings	1
2	Key Definitions	1
3	Sales and Return Data.....	2
4	Containers Redeemed at Collection Depots.....	4
5	Redemption by Region.....	5

1 Introduction

The Northern Territory Container Deposit Scheme (CDS) commenced on 3 January 2012. The aim of the program is to reduce beverage container litter and increase resource recovery across the Northern Territory.

Five CDS coordinators are approved to operate in the Northern Territory. They are; Envirobank NT, Marine Stores, NT Coordinators, NT Recycling Solutions and Statewide Recycling. Their role is to work with the collection depots and beverage manufactures to recycle, reuse or appropriately dispose of approved containers.

Territorians can collect their 10 cents in return for each approved container that is delivered to an approved collection depot. During the October to December 2014 quarter collection depots were open in Berrimah, Pinelands, Winnellie, Katherine, Elliot, Alice Springs and Tennant Creek. Reverse Vending Machines (RVM) were operating in Milingimbi and at Charles Darwin University.

Since CDS commenced approval has been granted for the supply of over 4,600 products in regulated containers. During the October to December 2014 quarter 27 container supply approval applications from 19 companies were granted, representing 81 products approved for supply into the Northern Territory in the period.

1.1 Legislation

The amended *Environment Protection (Beverage Container and Plastic Bags) Act 2014* commenced on 30 June 2014. The regulatory oversight for the Act now lies with the Northern Territory Environment Protection Authority (NT EPA).

1.2 Approved refund markings

All regulated and approved beverage containers sold in the Northern Territory must bare either of the following markings:

- 10c Refund at SA/NT collection depots in State/Territory of purchase; or
- 10c Refund at collection depots in NT.

2 Key Definitions

Containers redeemed: the number of approved containers that have been accepted by collection depots to give a 10 cent refund to the community.

Containers returned: the number of containers that have been aggregated and returned to CDS coordinators from collection points.

HDPE (high-density polyethylene): the material that some plastic juice containers are made from. Classification of HDPE under the resin identification coding (RIC) system established in 1988 is represented by the number 2 embedded in the container.

LPB (liquid paper board): materials utilised in packaging of beverages such as popper juices. LPB also includes aseptic which is the packaging of beverages in a sterile container, used for example in long life *ultra-high-temperature (UHT)* processed beverages.

Other material: material types may include steel, foil sachets, and other plastics including biodegradable, photo-sensitive and plant-based plastics. This includes other resin types classified under the resin identification coding system that are represented by the number 7 embedded in the container.

PET (polyethylene terephthalate): the material that some plastic beverage containers are made from (for example, water bottles). Classification of PET under the resin identification coding system is represented by the number 1 embedded in the container.

Return rates: the total percentage of container numbers that have been returned to Coordinators in relation to the total number of containers sold in the Northern Territory.

RVM reverse vending machine: a device that accepts used (empty) beverage containers and returns money to the user. Some RVM only accept aluminium and plastic containers.

3 Sales and Return Data

During the October to December 2014 quarter, 44 603 020 approved containers were sold in the Northern Territory. 24 020 832 of those containers were returned to CDS coordinators.

This equates to a return rate of 53.85% across all material types (see Table 1). That is, 53.85% of all containers sold in the Northern Territory were reused, recycled, or appropriately disposed of through the CDS.

Table 1: Number of containers returned by material type to CDS coordinators

Container Material	Containers Sold	Containers Returned to CDS Coordinators	Container Return Rate (%)
Aluminium	17 502 397	11 387 469	65.06
PET	12 317 951	4 086 381	33.17
HDPE	771 882	204 021	26.43
Glass	12 090 100	7 209 358	59.63
LPB	1 902 822	1 133 603	59.57
Steel/ Other	17 868	0	0
TOTAL	44 603 020	24 020 832	53.85

In this quarter 59.63% of glass beverage containers sold in the Northern Territory were returned to CDS coordinators. Of the other major material streams 65.06% of aluminium containers, 33.17% of PET containers and 59.57% of LPB containers were processed through the scheme (see Figure 1).

**Container return rate (%) by material type
October-December 2014**

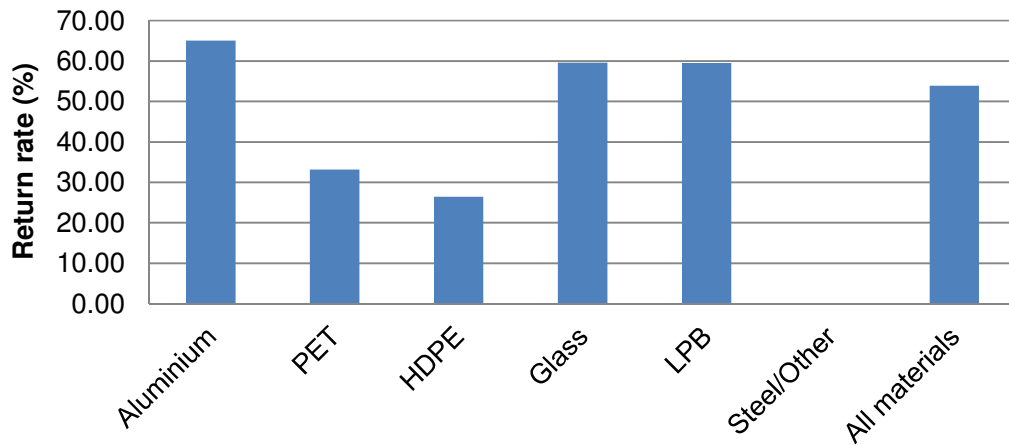


Figure 1: Return rate by material type

The CDS has seen a steady increase in return rates since the beginning of 2014. As figure 2 demonstrates, there has been an increase of 8.8% since the January to March 2014 quarter with a return rate of 53.85% achieved in the October to December 2014 quarter.

2014 return rates by quarter

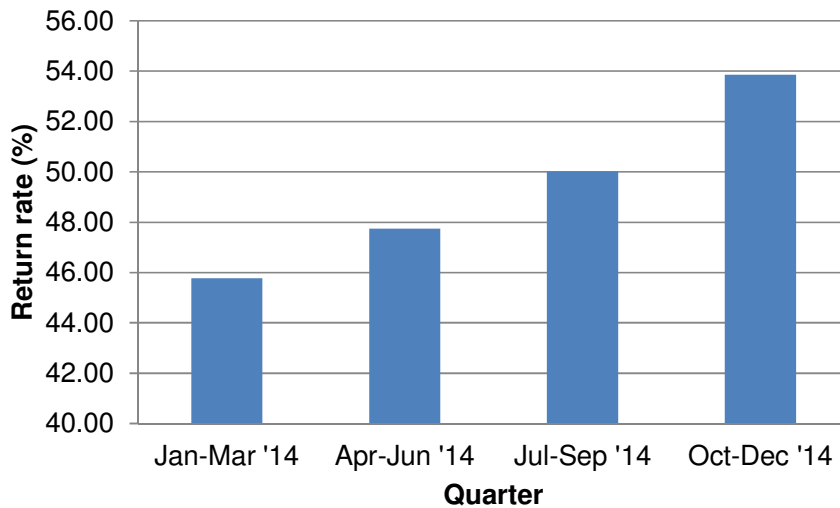


Figure 2: 2014 return rates by quarter

4 Containers Redeemed at Collection Depots

A total of 23 451 551 containers were redeemed at collection depots over the October to December 2014 quarter (see table 2). The redemption of these containers equates to over \$2.3 million in deposits that have been paid out to families, schools, community organisations and commercial operators in the Northern Territory over the October to December 2014 period.

Table 2 – Number of containers redeemed by material type at collection depots

Container material	Containers redeemed at collection depots
Aluminium	11 170 680
PET	3 797 746
HDPE	188 380
Glass	7 252 959
LPB	1 027 885
Steel/ Other	13 901
TOTAL	23 451 551

The CDS has seen a steady increase in the number of containers redeemed since the beginning of 2014 as demonstrated in Figure 3. Over 1.7 million more containers were redeemed in the July to September 2014 quarter than the previous quarter.

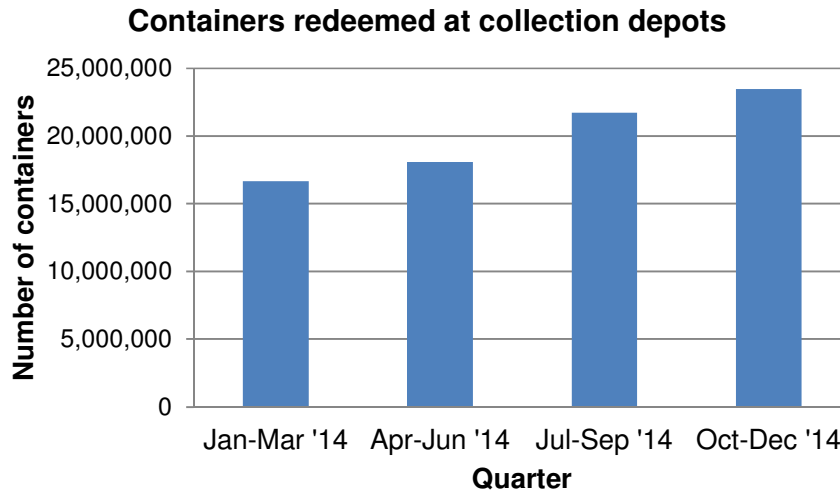


Figure 3: Number of containers redeemed at collection depots by quarter

5 Redemption by Region

Collection depots operating in the greater Darwin region include the depots located in Berrimah, Charles Darwin University (RVM), Pinelands and Winnellie. Areas outside of Darwin include depots in Katherine, Alice Springs, Tennant Creek, Elliot and Milingimbi.

- 16.82 million containers were redeemed in the greater Darwin region; and
- 6.6 million containers were redeemed in areas outside of Darwin (see Figure 4).

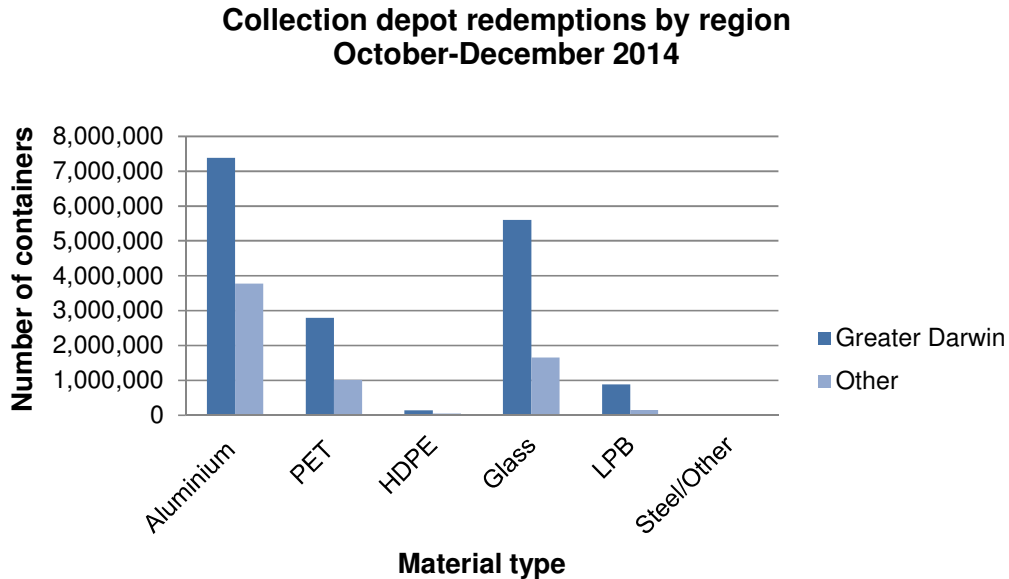


Figure 4: Collection depot redemptions by region and material type

The number of containers redeemed in the greater Darwin region and outside of Darwin steadily increased in 2014 as demonstrated in Figure 5.

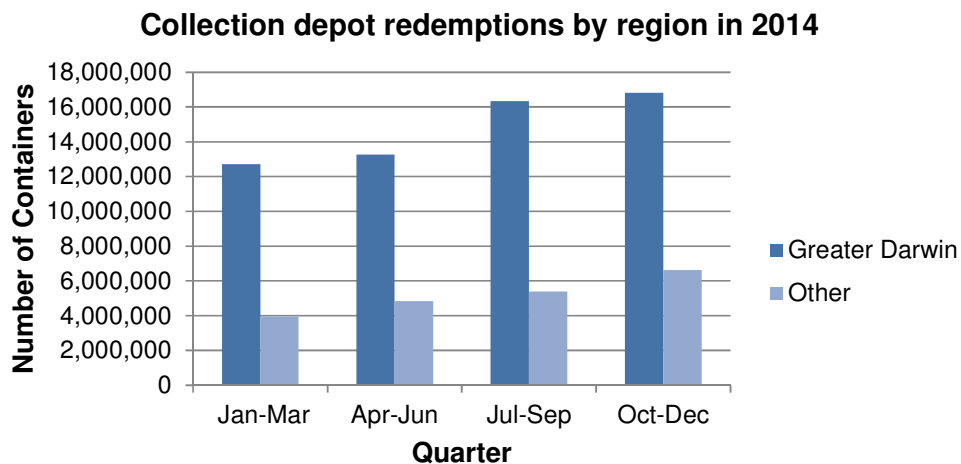


Figure 5: Collection depot redemptions by region and quarter in 2014