




## Darwin Facility Environmental Management Plan

**Electronic version on the Intranet is the controlled Edition and Revision.  
Printed copies are considered uncontrolled.  
Before using a printed copy, verify that it is the current Edition and Revision.**

REV.	ISSUED	REVISION	DOC. WRITER	DOC. REVIEWER	AUTH. BY
0	02.08.2024	New document.	Dylan Edwards	Helen Vercoe	Nathan Widger
1	11.12.2024	Removed Appendices – not required.	Dylan Edwards	Helen Vercoe	Nathan Widger
2	20.01.2025	Added Appendices: <ul style="list-style-type: none"> <li>▪ Appendix A – Emergency Evac Detail Diagram</li> <li>▪ Appendix B – Drainage Detail Diagram</li> </ul>	Dylan Edwards	Helen Vercoe	Nathan Widger

This document is scheduled for review on: 02.08.2025

DOCUMENT WRITER:	Name: Dylan Edwards	Signature: 
DOCUMENT REVIEWER:	Name: Helen Vercoe	Signature: 
DOCUMENT AUTHORISER:	Name: Nathan Widger	Signature: 

# Darwin Facility Environmental Management Plan

---

## Table of Contents

1.	INTRODUCTION .....	3
2.	LOCATION.....	3
3.	SCOPE OF WORKS.....	3
4.	OPERATION HOURS.....	4
5.	AIM.....	4
6.	SITE REQUIREMENTS.....	4
7.	ENVIRONMENTAL IMPACTS AND CONTROLS .....	6
9.	ORGANISATION STRUCTURE AND RESPONSIBILITY.....	11
10.	EMERGENCY PREPAREDNESS AND RESPONSE .....	11
11.	INCIDENT MANAGEMENT .....	12
12.	ENVIRONMENTAL AUDITS AND INSPECTIONS .....	13
13.	DOCUMENT CONTROL.....	13
14.	ADAPTIVE MANAGEMENT .....	13
15.	APPENDIX A: EMERGENCY EVACUATION DETAIL.....	14
16.	APPENDIX B: DFRAINAGE DETAIL.....	15

# Darwin Facility Environmental Management Plan

---

## 1. INTRODUCTION

This Environmental Management Plan has been prepared by Exact Contracting Services Pty Ltd (Exact Contracting) to document the site-specific environmental controls implemented throughout Exact Contracting's Darwin facility and work in conjunction with the corporate Exact Contracting Environmental Management Plan (ENVPLN-001).

Exact Contracting will carry out work in such a way as to minimise impact upon the natural environment and comply with best principles and practice to:

- Prevent pollution of any surface and ground water of natural origin and include provision of suitable equipment, facilities, and precautions to prevent the discharge of contaminants which may pollute the atmosphere, any body of water, or land areas, or which harm aquatic life or other wildlife;
- Protect native wildlife and vegetation ecosystems and biodiversity through the control of import weed species;
- Implement water use conservation and recycling initiatives where economically feasible;
- Implement energy efficient processes where appropriate;
- Minimise quantities of waste generated;
- Recycle, re-use or recover resources from waste, as far as practicable;
- Ensure adequate dust control during construction activities;
- Minimise the generation of all noise;
- Report all environmental incidents (e.g., spills, emissions, unauthorised land disturbance and/or waste disposal, flora, and fauna impacts); and
- Adhere to all requirements of the ISO14001:2015 Environmental Management System.

---

## 2. LOCATION

The facility at Nebo Road in East Arm, Northern Territory includes a warehouse department, plant and equipment workshop, and serves as a hub for the NT divisions of the company's transport department. All areas play a key role in supporting the company's civil and mining operations across Australia

---

## 3. SCOPE OF WORKS

### 3.1. DARWIN FACILITY SCOPE OF WORKS

3.1.1. Scope of works comprise of the following, but are not limited to:

- A. Plant and equipment maintenance and refurbishment;
- B. Tyre change, maintenance, and storage;
- C. Transport and heavy haulage depot;
- D. Collection and dispatch depot/site support;
- E. Purchasing and supply of goods;
- F. Plant and vehicle wash down;
- G. Plant and vehicle storage;
- H. Administrative positions; and
- I. Temporary Waste storage.

## Darwin Facility Environmental Management Plan

### 4. OPERATION HOURS

4.1.1. Operational hours on this side of the Darwin facility are unrestricted due to industrial zoning – operational hours are from **6:00am to 6:00pm Monday to Saturday**.

### 5. AIM

The aim of this environmental management plan is to assess key environmental hazards (risks) that may be associated with work undertaken at the Darwin facility whilst establishing and maintaining mitigation measures to address the overall risks to the environment.

### 6. SITE REQUIREMENTS

#### 6.1. SITE ENVIRONMENTAL RISK ASSESSMENT

6.1.1. Key legal and other regulatory or site requirements that are relevant to the Darwin site can be found in section 6.3. The Darwin site environmental risk assessment is contained in Lucidity intranet under environmental risks. It is used to identify environmental hazards (risks) that may be associated with the Darwin facility scope of work (aspects) and help establish and maintain mitigation controls of the identified aspects.

#### 6.2. SITE DOCUMENTATION

SITE DOCUMENTATION		
ASPECT OR PROGRAM	DOCUMENT TITLE	DOC. #
System	Environmental Policy	ENVPOL-001
System	Company Environmental Management Plan	ENVPLN-001
Waste	Controlled Waste Tracking and Transfer Procedure	ENVPRO-001
All	Environmental Communications Procedure	ENVPRO-002
Waste	Waste Management Procedure	ENVPRO-003
Air	Dust Management Procedure	ENVPRO-006
Hazmat	Spill Response Procedure	WHSPRO-026
Hazmat	Spill Kit Inspection Tool	WHSFRM-089
Land	Plant Movement Notification Form	PLTFRM-005
Land	Mobile Plant Mechanical Check Form	PLTFRM-003
Land	Weed & Seed Inspection Form	PLTFRM-020
Compliance	Monthly Environmental Inspection	ENVFRM-005

## Darwin Facility Environmental Management Plan

### 6.3. COMPLIANCE OBLIGATIONS

LEGISLATION, REGULATIONS AND STANDARDS		
State	Federal	Other
<ul style="list-style-type: none"> <li>- <i>Aboriginal Land Act 1978</i> (NT);</li> <li>- <i>Dangerous Goods Act 1998</i> (NT);</li> <li>- <i>Environmental Protection Act 2019</i> (NT);</li> <li>- <i>Environmental Offences and Penalties Act 1996</i> (NT);</li> <li>- <i>Fire and Emergency Act 1996</i> (NT);</li> <li>- <i>Heritage Act 2011</i> (NT);</li> <li>- <i>Northern Territory Aboriginal Sacred Sites Act 1989</i> (NT);</li> <li>- <i>Soil Conservation and Land Utilisation Act 1969</i> (NT);</li> <li>- <i>Territory Parks and Wildlife Conservation Act 1976</i> (NT);</li> <li>- <i>Transportation of Dangerous Goods by Road and Rail (National Uniform Legislation) Act 2010</i> (NT);</li> <li>- <i>Waste Management and Pollution Control Act 1998</i> (NT);</li> <li>- <i>Water Act 1992</i> (NT);</li> <li>- <i>Weeds Management Act 2001</i> (NT)</li> <li>- <i>Dangerous Goods Regulations 1985</i> (NT);</li> <li>- <i>Environmental Offences and Penalties Regulations 2011</i> (NT);</li> <li>- <i>Fire and Emergency Regulations 1996</i> (NT);</li> <li>- <i>Heritage Regulations 2012</i> (NT);</li> <li>- <i>Transportation of Dangerous Goods by Road and Rail (National Uniform Legislation) Regulations 2010</i> (NT);</li> </ul>	<ul style="list-style-type: none"> <li>- <i>Aboriginal and Torres Strait Islander Act 2005</i> (Cth);</li> <li>- <i>Aboriginal and Torres Strait Islander Heritage Protection Act 1984</i> (Cth);</li> <li>- <i>Aboriginal Land Rights (Northern Territory) Act 1976</i> (Cth);</li> <li>- <i>Environment Protection and Biodiversity Conservation Act 1999</i> (Cth);</li> <li>- <i>Native Title Act 1993</i> (Cth);</li> <li>- <i>Aboriginal and Torres Strait Islander Heritage Protection Regulations 2017</i> (Cth);</li> <li>- <i>Aboriginal Land Rights (Northern Territory) (Land Description) Regulations 2007</i> (Cth);</li> <li>- <i>Aboriginal Land Rights (Northern Territory) Regulations 2007</i> (Cth);</li> <li>- <i>Environment Protection and Biodiversity Conservation Regulations 2000</i> (Cth).</li> </ul>	<ul style="list-style-type: none"> <li>- AS 1940 – 2004 The storage and handling of flammable and combustible liquids;</li> <li>- AS1692 – 2006 Steel tanks for flammable and combustible liquids;</li> <li>- ANZECC Australian Guidelines for Water Quality Monitoring and Reporting;</li> <li>- RTA Code of Practice for Water Management;</li> <li>- Environmental Noise Management Manual;</li> <li>- Declared weeds of the Northern Territory;</li> <li>- Weeds of National Significance (WONS).</li> </ul>

## Darwin Facility Environmental Management Plan

LEGISLATION, REGULATIONS AND STANDARDS		
State	Federal	Other
<ul style="list-style-type: none"> <li>- <i>Waste Management and Pollution Control (Administration) Regulations 1998 (NT);</i></li> <li>- <i>Water Regulations 1992 (NT);</i></li> <li>- <i>Weeds Management Regulations 2001 (NT).</i></li> </ul>		

## 7. ENVIRONMENTAL IMPACTS AND CONTROLS

### 7.1. SITE ENVIRONMENTAL AND DRAINAGE MAP

7.1.1. A map of the Darwin facility can be found in the appendices of this document highlighting the drainage paths, storage of sensitive materials and emergency response locations.

### 7.2. FLORA AND FAUNA MANAGEMENT

ENVIRONMENTAL ASPECTS	POTENTIAL IMPACTS
Mobilising vehicles and machinery to site.	<ul style="list-style-type: none"> <li>▪ Outbreak of weeds and/or pathogens reduces habitat quality.</li> </ul>
Washing vehicles and machinery at wash-bay.	<ul style="list-style-type: none"> <li>▪ Loss of vegetation condition due to contaminated wash water.</li> <li>▪ Reduce wildlife health due to contaminated wash water.</li> <li>▪ Entrapment of wildlife in wash bay sump.</li> </ul>
Producing and handling waste from operations.	<ul style="list-style-type: none"> <li>▪ Attraction of pest animals and snakes.</li> <li>▪ Decrease in native flora and fauna health from leaching of contaminants.</li> <li>▪ Decrease in native flora and fauna health from reliance on waste as food source.</li> </ul>
Transporting, storing, and using hydrocarbons and other hazardous materials.	<ul style="list-style-type: none"> <li>▪ Decrease in flora/fauna health and soil fertility due to hydrocarbon and hazardous material spills.</li> </ul>
Recommissioning vehicles and machinery.	<ul style="list-style-type: none"> <li>▪ Disturbance to wildlife from noise associated with abrasive blasting (when applicable).</li> <li>▪ Contamination of land and water leads to flora and fauna health issues.</li> </ul>

## Darwin Facility Environmental Management Plan

### CONTROLS

#### WILDLIFE INTERACTION

- Native wildlife such as mammals, lizard, snakes, and birds shall have right of way when travelling on site, within the Darwin facility and on roads when safe to do so.
- All fatal and injured wildlife incidents that occur on a project site (e.g., whilst mobilizing machinery from Darwin to a new project) shall be recorded, entered into Lucidity environmental incidents register and reported to the Environment Department.
- Wildlife is only permitted to be captured, handled, and released by persons trained and/or licensed for such activities.

#### WEED MANAGEMENT AND EQUIPMENT HYGIENE

- All vehicles and equipment must be inspected using the Mobile Plant Mechanical Check Form (PLTFRM-003) to prevent the introduction of weeds or pathogens at the site. A Weed & Seed Inspection Form (PLTFRM-020) may be required for sensitive or interstate travel.
- All soil, mud and debris must be removed from vehicles, machinery, and staff footwear prior to entry to site. Particular attention should be made to tyres, mud flaps, interior and undercarriage.
- Ongoing weed management and removal to prevent and control weed incursions externally contracted if necessary.
- Monthly Environmental Inspections will account for the presence of weed incursions.
- All machinery and equipment will comply with site-specific quarantine standards for vehicle and equipment hygiene procedures. All plant and equipment, including vehicles, coming onto a site for the first time, or re-entering from outside a weed quarantine area, must be clean and inspected as per above.

### 7.3. AIR QUALITY MANAGEMENT

ENVIRONMENTAL ASPECTS	POTENTIAL IMPACTS
Operating facilities, machinery, vehicles, and equipment that consume fuel and electricity.	<ul style="list-style-type: none"> <li>▪ Release of greenhouse gases (CO<sub>2</sub> equivalents) to atmosphere and contribution to global warming.</li> <li>▪ Release of fumes and odours.</li> </ul>
Using paint for vehicle and machinery maintenance.	<ul style="list-style-type: none"> <li>▪ Release of greenhouse gases to atmosphere and contribution to global warming.</li> <li>▪ Release of fumes and odours.</li> </ul>
Operating vehicles and machinery on exposed surfaces.	<ul style="list-style-type: none"> <li>▪ Release of dust particulate to atmosphere.</li> </ul>
Operating machinery that produces particulates as part of processing.	<ul style="list-style-type: none"> <li>▪ Release of dust particulate to atmosphere.</li> </ul>

### CONTROLS

#### EMISSIONS MANAGEMENT

- All fuel, energy, oil, grease, explosives, and paint consumption will be recorded and reported as per National Greenhouse Energy Reporting requirements.
- All machinery, vehicles and equipment shall be serviced and maintained regularly to ensure optimal fuel efficiency.

## Darwin Facility Environmental Management Plan

### 7.4. WASTE AND MATERIALS MANAGEMENT

ENVIRONMENTAL ASPECTS	POTENTIAL IMPACTS
Washing vehicles and machinery.	<ul style="list-style-type: none"> <li>▪ Collection of sediment contaminated with hydrocarbons, coolant, and hydraulic fluid.</li> <li>▪ Reduce wildlife health due to contaminated wash water and natural water courses.</li> </ul>
Handling, storing, and transporting waste from mining and civil operations.	<ul style="list-style-type: none"> <li>▪ Pollution of land and water from release of waste solids and liquids.</li> <li>▪ Increased volume of waste to landfill.</li> <li>▪ Missed opportunities for recovery.</li> <li>▪ Attraction of pest animals to site.</li> </ul>
Transporting, storing, and using hydrocarbons and other hazardous materials.	<ul style="list-style-type: none"> <li>▪ Contamination of surface water.</li> <li>▪ Loss of fauna and flora condition due to hydrocarbon and hazardous material spills.</li> </ul>
Containing and cleaning hydrocarbon and hazardous chemical spills.	<ul style="list-style-type: none"> <li>▪ Accumulation of spill contaminated absorbents.</li> </ul>
CONTROLS	
WASTE MANAGEMENT AND TRACKING	
<ul style="list-style-type: none"> <li>▪ Waste management will adopt a hierarchy approach:               <ul style="list-style-type: none"> <li>A. AVOID waste production.</li> <li>B. REDUCE waste production.</li> <li>C. REUSE waste.</li> <li>D. RECYCLE waste.</li> <li>E. RECOVER part of waste.</li> <li>F. TREAT to reduce contamination.</li> <li>G. DISPOSE to environmental standards.</li> </ul> </li> </ul>	
<ul style="list-style-type: none"> <li>▪ Waste and recycling management shall be completed in accordance with the Waste Tracking Procedure (ENVPRO-001) and Waste Management Procedure (ENVPRO-003). All waste at the site shall be segregated into different classes of waste and recyclable materials within the designated waste and recycling banded areas.</li> </ul>	
<ul style="list-style-type: none"> <li>▪ Designated waste management areas shall be established in the workshop, and laydown area with containers consistent with the segregation requirements and forecast waste provided. Waste and other materials will be collected and stored in commercial waste skips and IBCs.</li> </ul>	
<ul style="list-style-type: none"> <li>▪ Waste and recyclable material types will be measured monthly and recorded in Lucidity as part of the monthly environmental report.</li> </ul>	
<ul style="list-style-type: none"> <li>▪ Waste and recycling areas will be adequately signposted with collection containers provided with labels of waste/recyclable material type.</li> </ul>	
<ul style="list-style-type: none"> <li>▪ All areas, especially the environmentally significant areas, shall be monitored to maintain good housekeeping. Regular cleaning of the wash bay area and holding pit shall occur through delegation of wash bay responsibility. Wastewater shall be disposed of through an existing onsite biocycle. All wastes shall be segregated into general</li> </ul>	

## Darwin Facility Environmental Management Plan

rubbish, cardboard recycling, timber, scrap metal and controlled wastes such as waste oil, grease and oil filters will be separated accordingly to avoid overflowing stockpiles.

- Controlled waste will be handled in accordance with the regulations and the necessary waste tracking information completed. Please refer to the company online waste tracking form.

### HYDROCARBON AND HAZARDOUS SUBSTANCES

- Product containers must be adequately labelled and maintained so that the label is legible.
- All hydrocarbons and hazardous substances stored at the site must be provided in an allocated bunded area, mobile pallet bund or designated cabinet. Drums or 1,000L IBCs (pods) shall not be stored directly on the ground.
- A Hydrocarbon lube station is located at the Darwin workshop area to minimise the risk of spills.
- Yellow metal flammable liquid/gas and chemical storage cabinets will be used to segregate materials. Cabinets will be positioned in the workshop container(s) and will meet the required separation distance standards and advisory labelling.
- All bunds will be constructed to meet relevant state and territory guidelines as well as *AS1940B1993: The storage and handling of flammable and combustible liquids* and *AS 3780-1994: The storage and handling of corrosive substances*.
- Storage of hazardous materials will be such that separation distances will be maintained. In particular, hydrocarbons will not be stored with corrosive materials.
- Spills are to be cleaned immediately. If this is not feasible, greater than two (2) litres, on unsealed ground or requires significant cleanup efforts, the spill is to be reported in the Lucidity Spill Report Card. General purpose spill kits (120L or 240L wheelie bins) shall be provided in all locations where there is a risk of spill during operational use or maintenance of machinery, vehicles, and equipment.
- All production and maintenance staff will be required to complete the Exact Contracting spill prevention and response training.
- All bunds and sumps including the hydrocarbon lube station must be inspected and be pumped of any liquids to avoid them from overflowing. Water from rainfall must also be removed immediately.
- All spills must be cleaned up in accordance with the Company Spill Response Procedure (WHSSOP-023).
- Exact Contracting procedures require that all spills greater than 2 litres are to be recorded in the Lucidity spills register. Upon entry into the Lucidity spill register, those spills that are greater than 20 litres will prompt the environmental incident function. It is important that all elements of the incident report are completed.
- All chemical and hydrocarbon wastes, including any other hazardous wastes, are to be disposed of to an appropriate licenced disposal facility.
- Only authorised detergents (biodegradable – quick break) may be used for washing vehicles and machinery.

### 7.5. NOISE AND VIBRATION MANAGEMENT

ENVIRONMENTAL ASPECTS	POTENTIAL IMPACTS
Operating equipment, machinery and transport activities.	▪ Disturbance of local residents and fauna from noise and vibration.
Operating machinery and equipment at facilities.	▪ Disturbance of local residents and fauna.

## Darwin Facility Environmental Management Plan

Storage of machinery, vehicles, equipment and consumables.	▪ Adverse community perceptions due to visual appearance.
Illuminating operational areas for night works.	▪ Disturbance of people and fauna from light spill.
<b>CONTROLS</b>	
<b>NOISE MANAGEMENT</b>	
▪ All machinery and equipment will comply with legislative and industry standards for noise emissions, including environment protection licensing requirements.	
▪ Machinery and equipment shall be subject to audiometric testing and serviced and maintained to meet noise thresholds.	
▪ Noise barriers, buffers, enclosed areas, and attenuation may be considered where an activity or use of equipment has the potential to exceed defined noise criteria.	
▪ All noise and vibration monitoring equipment (where required) must be calibrated as per equipment manufacturer specifications at a NATA approved laboratory.	
<b>VIBRATION MANAGEMENT</b>	
▪ Operation of machinery and equipment shall consider appropriate timing and comply with relevant restrictions defined in environment protection legislation and policy.	

### 7.6. FIRE MANAGEMENT

ENVIRONMENTAL ASPECTS	POTENTIAL IMPACTS
Operating facilities, machinery, vehicles, and equipment.	<ul style="list-style-type: none"> <li>▪ Ignition of flammable fuels due to stone strike or hot parts.</li> <li>▪ Mechanical or electrical defect.</li> </ul>
Repair and maintenance using welders and grinders.	<ul style="list-style-type: none"> <li>▪ Ignition of flammable material.</li> </ul>
<b>CONTROLS</b>	
<b>FIRE PREVENTION</b>	
<ul style="list-style-type: none"> <li>▪ Fires will be prevented through the following onsite controls:               <ul style="list-style-type: none"> <li>- Correct storage and handling of combustible materials;</li> <li>- Plant maintenance practices and housekeeping;</li> <li>- Training for maintenance and inspection of equipment;</li> <li>- Operation and use of plant under designed loads and conditions;</li> <li>- Use of tyres with correct TKPH ratings;</li> <li>- Electrical protection and wiring to the applicable standards;</li> <li>- Reducing the temperature of hot surfaces;</li> <li>- Inspection regime;</li> <li>- Segregation of fuel and ignition sources;</li> <li>- Adequately maintained fire breaks around infrastructure and equipment enclosures, consistent with relevant authority guidelines;</li> <li>- Limiting the quantity of potential fire fuels;</li> <li>- Adequate ventilation; and</li> </ul> </li> </ul>	

## Darwin Facility Environmental Management Plan

<ul style="list-style-type: none"> <li>- Hot works permit.</li> </ul>
<ul style="list-style-type: none"> <li>▪ Appropriately rated and sized extinguishers should be provided with consideration to AS 2444:2001 and AS 1850: 2009, as required by the fire risk assessment and the intended fire risk area being protected. The fire extinguishers shall be installed in safe locations, clearly identified and readily accessible.</li> </ul>

### 9. ORGANISATION STRUCTURE AND RESPONSIBILITY

Exact Contracting shall comply with the provisions of the Client Environmental Standard Specification and any other environmental protection provisions in the Contract and observe the requirements of any applicable statute by-law, standard etc. related to environmental protection.

ROLE	PROJECT SPECIFIC RESPONSIBILITIES (INCLUDING BUT NOT LIMITED TO);
<b>Workshop Manager</b>	<ul style="list-style-type: none"> <li>▪ Allocate appropriate resources and ensure the required information for the monthly site environmental reports is captured and project environmental KPIs are met.</li> </ul>
<b>Administrator</b>	<ul style="list-style-type: none"> <li>▪ Ensure all relevant data is entered in the monthly environmental report.</li> </ul>
<b>Store Person</b>	<ul style="list-style-type: none"> <li>▪ Ensure all relevant data is recorded for the monitoring of environmental performance. Including the reporting of spills onto Lucidity. Recording of fuel and oil usage, waste, controlled waste, recycling, batteries, tyres and other inventory consumed.</li> <li>▪ Ensure good housekeeping of the following areas and regularly monitor the following areas for EMP compliance; gas storage, hydrocarbon bund, recyclable materials bund and bins.</li> <li>▪ Complete monthly environmental inspection on all work areas and coordinate the closure and rectifications of hazards and incidents.</li> </ul>
<b>Environmental Manager</b>	<ul style="list-style-type: none"> <li>▪ Conduct annual (or as specified) environmental audits and site visit.</li> <li>▪ Provide assistance regarding environmental management to all Exact Contracting HSE Coordinators &amp; Project Staff.</li> <li>▪ Complete site environmental risk assessments during all phases of Exact Contracting Projects to ensure regular monitoring, control and compliance.</li> <li>▪ Assist all Projects with the development and implementation of the Environmental Management Plan.</li> </ul>

### 10. EMERGENCY PREPAREDNESS AND RESPONSE

The project emergency response shall be managed in accordance with the Darwin Facility Emergency Response Plan (DARWHSPLN-003).

The Darwin Facility Site Emergency Response Plan was developed to provide reference information to Department Managers, Supervisors, Employees, Contractors, and Visitors if an emergency occurs. Emergency evacuation exercises

## Darwin Facility Environmental Management Plan

---

shall be conducted quarterly to ensure all personnel are familiar with the procedures contained in the event of a real emergency. Alternate emergency response scenarios shall also be identified for the site and tested annually. These may include:

- Vehicle Accident;
- Chemical Spill;
- Bomb Threat; and
- Medical Emergency.

This type of exercise shall be planned and conducted in conjunction with the site Emergency Response Team (ERT). For more information, refer to HSE Team Key Accountabilities (WHSFRM-091).

---

### 11. INCIDENT MANAGEMENT

Exact Contracting recognises its obligation to ensure that all accidents and incidents are reported, recorded, and investigated. Exact Contracting is committed to identifying corrective and preventative actions. Environmental incident and non-conformance management will be conducted in accordance with Exact Contracting Accident and Incident Investigation and Reporting Procedure (WHSPRO-005).

The procedure aims to ensure:

- Workers, contractors, and visitors are provided with information on our accident and incident investigation and reporting procedure during induction;
- Managers and Supervisors are provided with the training to enable them to investigate any accidents and incidents that may occur in their area;
- Accidents and incidents are reported to the relevant Manager or Supervisor immediately or as soon as reasonably practicable after occurrence;
- Statutory reporting occurs in conformance with legislative requirements;
- Managers and Supervisors investigate all incidents in consultation with relevant staff members (safety/training workers) and/or any other relative stakeholders (e.g., Health and Safety Representatives);
- A risk management approach is applied to the findings of all accident and incident investigations, so that any hazards identified are eliminated or, where that is not reasonably practicable, minimised by the application of the Hierarchy of Control;
- Selected preventative and corrective actions are monitored and communicated in relevant work group meetings;
- Incident statistics are reviewed by the safety department and reported to the management team so that trends are identified and planned preventative actions are implemented;
- All corrective actions are implemented, monitored, and reviewed for effectiveness, compatibility, and Improvement;
- Managers and Supervisors review and approve the investigation and outcomes as part of the accountability process; and
- All incidents are available on Lucidity for review.

## Darwin Facility Environmental Management Plan

---

### 12. ENVIRONMENTAL AUDITS AND INSPECTIONS

Annual Environmental Audits will be conducted on site as per the Exact Contracting Audit Procedure (WHSPRO-012) stipulating annual internal audits. Periodic audits of management systems are necessary to determine whether the management system has been properly implemented and maintained. The procedure defines the audit process to ensure consistency in selecting, undertaking, recording, and managing of Exact Contracting integrated management systems audits.

Monthly Environmental Inspections will be conducted as per the Exact Environmental Management Plan (ENVPLN-001) and all relevant data entered in the online management system, Lucidity.

---

### 13. DOCUMENT CONTROL

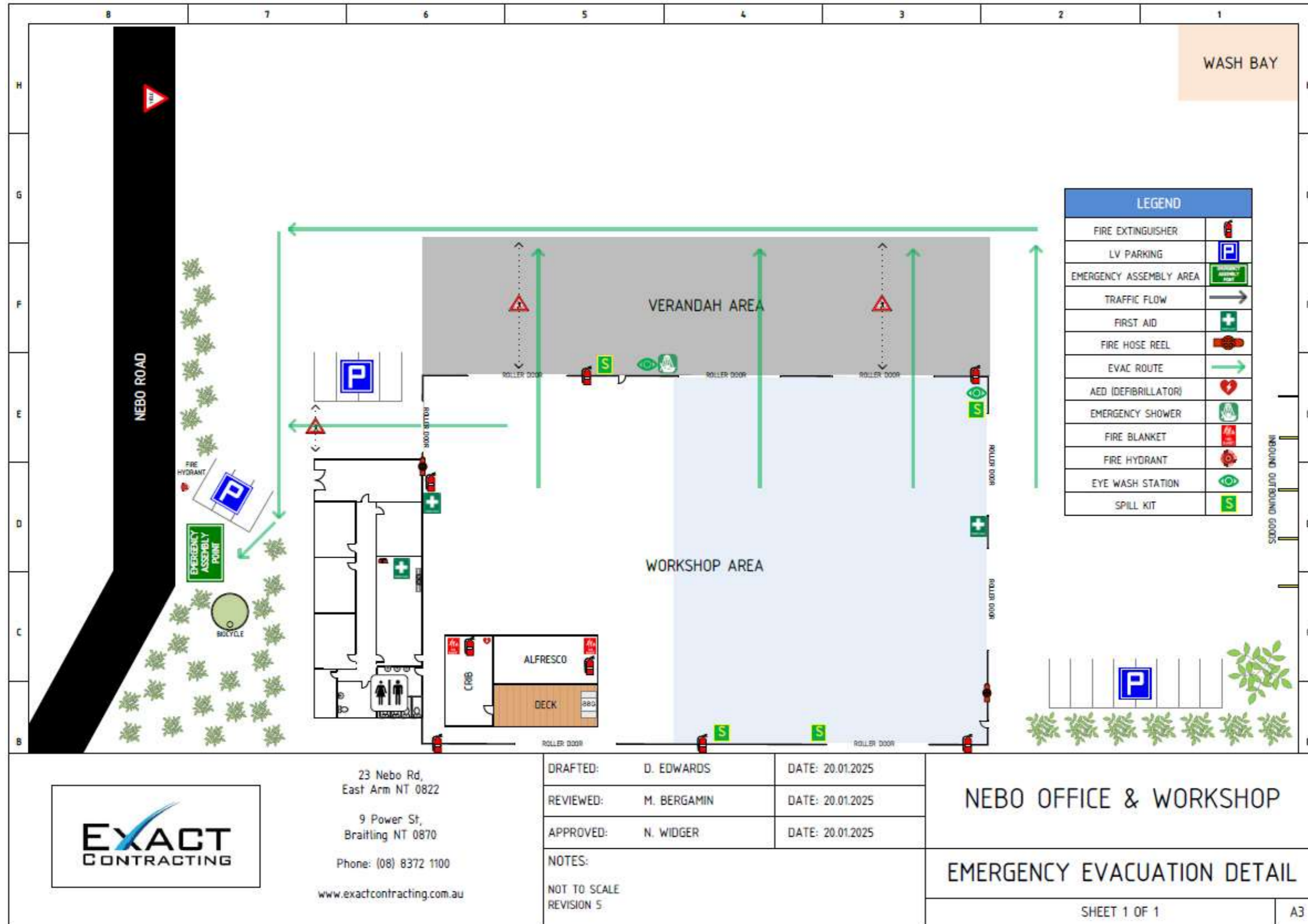
Document control will be managed under the specifications in the Exact Contracting Document Control Procedure (DCPRO-001). By incorporating ISO 9001 principles, the procedure governs the control, distribution, and removal of all documentation, both hard and electronic. The procedure applies to the retention and storage of records and documents.

---

### 14. ADAPTIVE MANAGEMENT

Exact Contracting's management system under the ISO 14001 standard has an adaptive management strategy. The effectiveness and performance of the management system is monitored through the monthly environmental inspections and monthly environmental report. The review of these processes continually assesses the effectiveness of any given management plan and/or control. Environmental management plan reviews are conducted annually as per document control procedures or by cause.

15. APPENDIX A: EMERGENCY EVACUATION DETAIL DIAGRAM



16. APPENDIX B: DRAINAGE DETAIL DIAGRAM

