

SECTION 14 INCIDENT REPORT (*Waste Management and Pollution Control Act*)

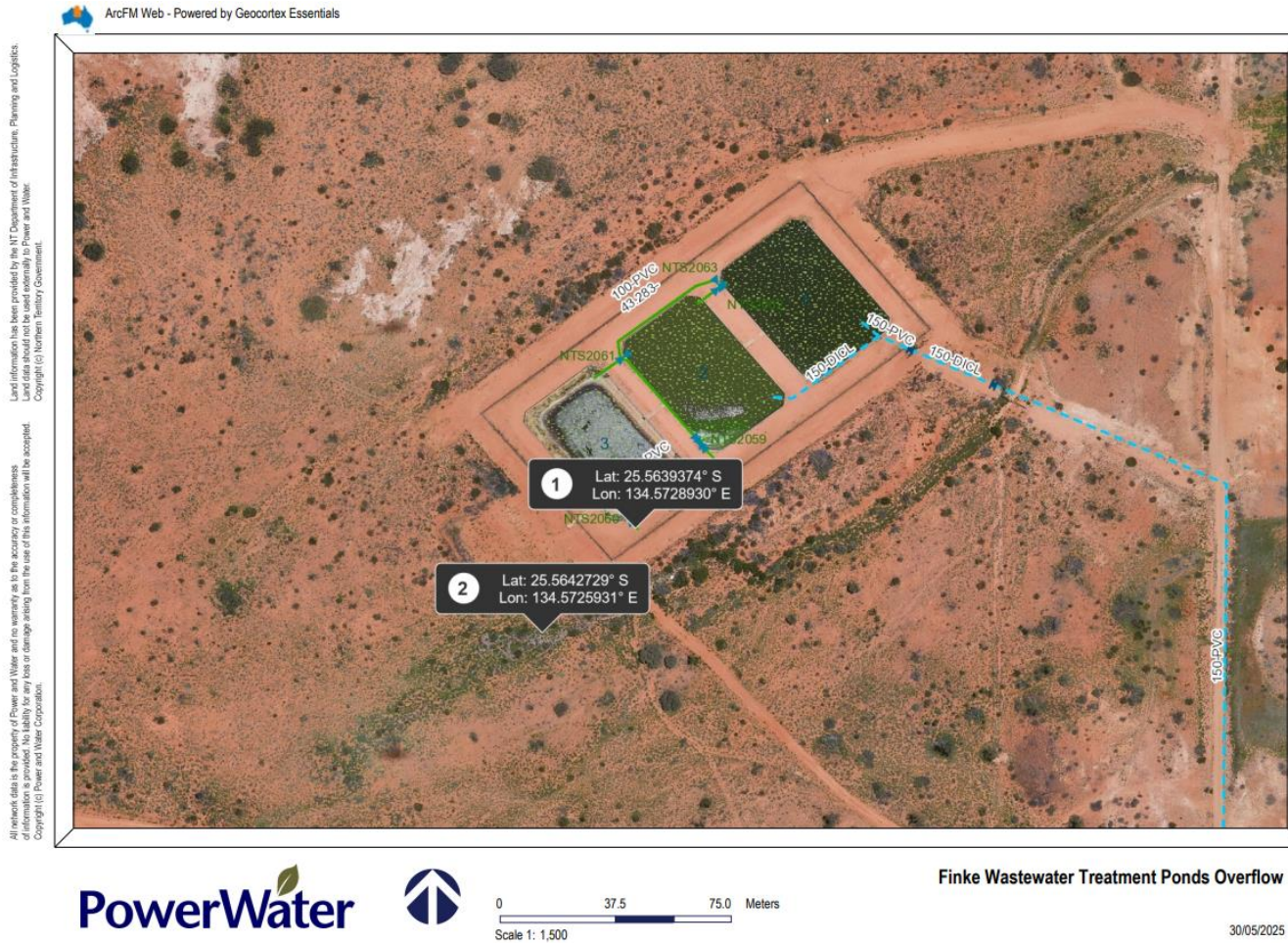
Date and Time of Notification:	Friday 30 th May 2025, 13:00hrs
Person / Company:	Power and Water Corporation
Incident:	Discharge of diluted and fully treated sewage effluent from the Finke wastewater treatment ponds

(a) the incident causing or threatening to cause pollution	<p><i>i. Description of the waste that was discharged.</i></p> <p>Diluted and fully treated wastewater</p> <p><i>ii. Indicative wastewater quality for the discharge.</i></p> <p>No representative or recent wastewater quality results are available, because this facility does not have a waste discharge licence, hence wastewater quality monitoring does not occur on a regular basis.</p> <p><i>iii. Volume of the waste that was discharged.</i></p> <p>The volume of wastewater discharged is unknown.</p>
(b) the place where the incident occurred	<p><i>i. Description of the Power & Water asset from which the discharge occurred.</i></p> <p>Finke wastewater stabilisation pond 3.</p> <p><i>ii. GPS coordinates of the discharge point from the Power & Water asset, and the final coordinates of the final discharge point.</i></p> <p>Discharge Point: 134.5728930E, 25.5639374S Final Discharge Point: 134.5725931E, 25.5642729S (approximate final discharge point)</p> <p>Discharge occurred from the lowest point of the final treatment pond, meaning it was fully treated effluent.</p> <p><i>iii. Indicate any locations nearby to the discharge point where public can gain ready-access, such as public open spaces through which the discharge moves.</i></p> <p>Access by the public to the spill is possible but unlikely. The area is not frequently visited by people other than the Utility Services Contract Worker (USCW). The Technical Co-ordinator will be requesting that the USCW closes off the small track leading up to pond 3 for a period of time.</p>

<p>(c) the date and time of the incident</p>	<p><i>i. The time and date of commencement and cessation of the discharge.</i></p> <p>The timing of the overflow is unknown. The USCW, responsible for this community advised the Alice Springs Power & Water Technical Co-ordinator at around 14:00hrs 29/05/2025 of the spill. The spill has ceased since valves were adjusted 30/05/2025.</p> <p><i>ii. How Power & Water were notified or became aware of the discharge.</i></p> <p>The UCSW found that the ponds were overflowing, during a routine site inspection.</p> <p><i>iii. The process by which the discharge occurred.</i></p> <p>The cause of the overflow is a combination of wet weather events and an increasing population due to an event starting 06/06/2025 (Finke Desert Race), which attracts around 20,000 plus people to the area.</p> <p><i>iv. The reason why the discharge occurred.</i></p> <p>As per (c) iii,</p>
<p>(d) how the pollution has occurred, is occurring or may occur</p>	<p>As per (c) iii & (c) iv.</p>
<p>(e) the attempts made to prevent, reduce, control, rectify or clean up the pollution or resultant environmental harm caused or threatening to be caused by the incident</p>	<p><i>i. Confirmation signage and fencing has been erected, as appropriate.</i></p> <p>Signage has been erected near the facility, to prevent or reduce the possibility of the public contacting the spill.</p> <p><i>ii. Decontamination of the site as appropriate.</i></p> <p>Clean up consistent with Sewage Spills/Overflow Response Work Instruction as appropriate to the location, and to minimise risk to the Environment. Site was inspected for any wastewater gross pollutants, of which none were observed, as the wastewater effluent had already gone through 3 treatment ponds.</p>
<p>(f) the identity of the person notifying the NT EPA</p>	<p>Power & Water's Environmental Team on behalf of Water Services</p>

SECTION 14 INCIDENT REPORT (*Waste Management and Pollution Control Act*)

Appendix A – Location Map with co-ordinates of discharge point and approximate final discharge location.



Appendix B – Location Photographs

