

## SECTION 14 INCIDENT REPORT (*Waste Management and Pollution Control Act*)

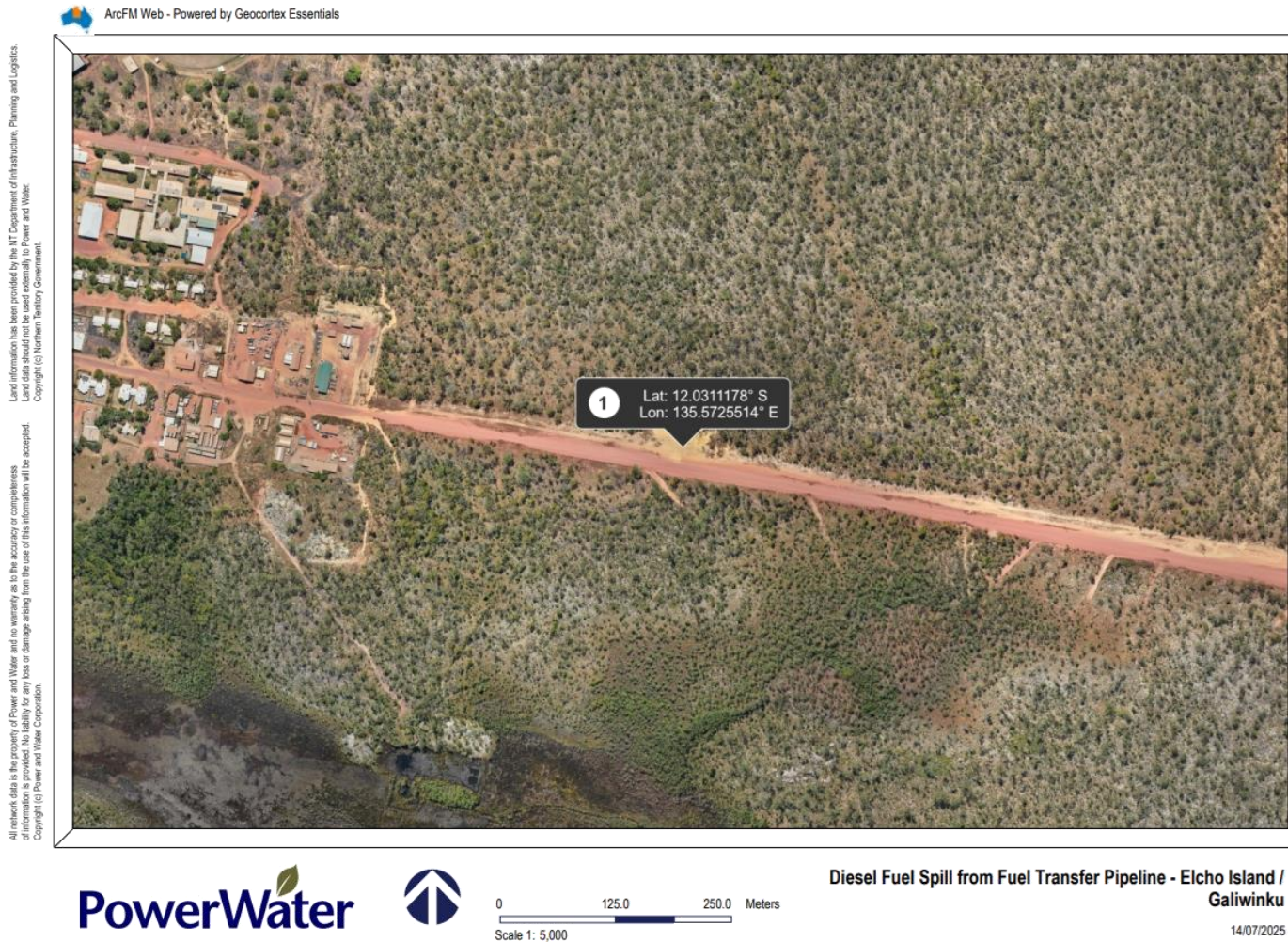
<b>Date and Time of Notification:</b>	Monday 14 <sup>th</sup> July 2025, 13:30hrs
<b>Person / Company:</b>	Power and Water Corporation
<b>Incident:</b>	Diesel fuel spill from fuel transfer pipeline struck by front end loader - Elcho Island / Galiwinku

<b>(a) the incident causing or threatening to cause pollution</b>	<p><i>i. Description of the waste that was discharged.</i></p> <p>Diesel fuel</p> <p><i>ii. Volume of the waste that was discharged.</i></p> <p>The volume of the diesel spilt is currently unknown</p>
<b>(b) the place where the incident occurred</b>	<p><i>i. Description of the Power and Water asset from which the discharge occurred.</i></p> <p>A polyethylene fuel transfer pipeline</p> <p><i>ii. GPS coordinates of the discharge point from the Power and Water asset, and the final coordinates of the final discharge point.</i></p> <p>Discharge Point: 135.5725514 E, -12.0311178 S Final Discharge Point: Immediately surrounding the discharge point</p> <p><i>iii. Indicate any locations nearby to the discharge point where public can gain ready-access, such as public open spaces through which the discharge moves.</i></p> <p>The discharge point and surrounding area is accessible by anyone on the Island. The East Arm Regional Council and all other contractors on the Island have been asked to avoid the area until repairs have been completed and the area remediated.</p>
<b>(c) the date and time of the incident</b>	<p><i>i. The time and date of commencement and cessation of the discharge.</i></p> <p>The exact time that the fuel transfer pipeline was struck and began to spill diesel is unknown. It is believed to have started sometime on Friday 11/07/2025.</p> <p><i>ii. How Power and Water were notified, or became aware of the discharge.</i></p> <p>The Utility Services Contract Worker (USCW) for the community advised the Power &amp; Water Technical Coordinator Generation of the event. The</p>

	<p>USCW was advised of the spill by a local indigenous contractor on the Island. Power &amp; Water however did not become aware of the spill until Monday 14/07/2025 07:00hrs.</p> <p><i>iii. The process by which the discharge occurred.</i></p> <p>Evidence points to a front-end loader having struck the fuel transfer pipeline.</p> <p><i>iv. The reason why the discharge occurred.</i></p> <p>One of 3 front-end loaders on the Island were operating in the area where the transfer pipeline was struck. Vicinity markers for the pipeline were previously in place but kept getting stolen.</p>
<b>(d) how the pollution has occurred, is occurring or may occur</b>	As per (c) iii & (c) iv.
<b>(e) the attempts made to prevent, reduce, control, rectify or clean up the pollution or resultant environmental harm caused or threatening to be caused by the incident</b>	<p><i>i. Attempts made to prevent, reduce, control, rectify or clean up the pollution.</i></p> <p>No fuel transfers occurred since the spill was detected.</p> <p>The fuel transfer pipeline was isolated at both ends.</p> <p>A temporary patched by wrapping the damaged section with Denso tape has been done to prevent any further spill to ground, see attached photograph.</p> <p>A contractor has been engaged to fly to the Island to undertake permanent repairs of the poly pipe as well as remediate the affected area, by digging up any contaminated soils for transfer back to Darwin and ultimately disposed of by a licenced waste management service provider.</p> <p><i>ii. Decontamination of the site as appropriate.</i></p> <p>All contaminated soil will be removed and transferred back to Darwin by a suitably licenced barge service and disposed of by a licenced waste management service provider.</p>
<b>(f) the identity of the person notifying the NT EPA</b>	Power and Water's Environmental Services team on behalf of Power Services

## SECTION 14 INCIDENT REPORT (*Waste Management and Pollution Control Act*)

### Appendix A – Spill Source Location Map



Appendix B – Location Photographs

