

APPENDIX B STAKEHOLDER CONSULTATION REPORT

Stakeholder Consultation Report

| Approved Rev | Approver Name Approver Position | Signature | Date |
|--------------|---|---|-----------------|
| 00 | Leslie Pyne Senior Advisor Social Performance |  | 24 October 2023 |

This document is the exclusive property of Sun Cable Holdings Pty Ltd ("SunCable"), licensed for use and benefit of its affiliates in connection with development of the Australia-Asia PowerLink. All information contained in this document is confidential and/or proprietary and must not be disclosed, used, or reproduced without SunCable's prior written consent. Except as expressly stated within, this document is not to be relied upon and no representation or warranty is given as to the accuracy, reliability, suitability, currency, or completeness of any information contained in this document.

Document revision history and tracking

Document Preparation

| Rev | Status | Date | Prepared by | Position | Reviewed by | Position |
|-----|--------------|-------------------|----------------|--|-----------------|--|
| A | For Review | 25 September 2023 | Elena Tsangari | Senior Advisor Government & Industry | Leslie Pyne | Senior Advisor Social Performance |
| | | | | | Joe Sheridan | Head of Access & Approvals |
| | | | | | Stefan Hladenki | Head of Government Relations |
| B | For Review | 9 October 2023 | Leslie Pyne | Senior Advisor Social Performance | Kylie Welch | Principal Consultant & Team Leader |
| | | | | | Joe Sheridan | Head of Access & Approvals |
| | | | | | Mark Branson | Chief Development Officer |
| C | For Approval | 24 October 2023 | Elena Tsangari | Senior Advisor Government & Industry | Leslie Pyne | Senior Advisor Social Performance |

Revision history tracking record (Use after Rev 00)

| Rev | Date | Description | Prepared by | Approved by |
|-----|------|-------------|-------------|-------------|
| | | | | |

Contents

| | |
|--|-----------|
| Executive Summary | 3 |
| 1 Project Overview | 4 |
| 2 Standards and Statutory Framework | 4 |
| 3 Stakeholder Engagement | 5 |
| 3.1 Stakeholder Engagement Objectives | 6 |
| 3.2 Methodology | 6 |
| 3.2.1 Highlights of EIS Consultation Campaign (2022) | 6 |
| 3.2.2 SEIS Consultation Campaign | 8 |
| 3.3 Communication Materials | 9 |
| 3.4 Stakeholder Mapping | 10 |
| 3.5 Engagement Activities | 13 |
| 3.5.1 Government | 13 |
| 3.5.2 Business and Industry | 14 |
| 3.5.3 Landowners and Affected Communities | 15 |
| 3.5.4 Aboriginal Consultation..... | 15 |
| 3.6 Limitations | 16 |
| 4 Key Findings | 17 |
| 5 Conclusion | 18 |
| Appendix 1 – Project Lifecycle Infographic | 20 |
| Appendix 2 – Advertisement in <i>The Australian</i> | 21 |
| Appendix 3 – Advertisement in <i>The NT News</i> | 22 |
| Appendix 4 – Information card | 23 |
| Appendix 5 – Fact Sheet | 24 |
| | |
| Tables | |
| Table 1-1: Methods of communication materials distribution | 10 |
| Table 1-2: Stakeholders offered a SEIS consultation briefing | 11 |
| Table 1-3: Community information stalls held by SunCable engagement team | 15 |

Figures

Figure 1-1: NT consultation campaign highlights (2022)

7

Executive Summary

SunCable is committed to transparent dialogue with stakeholders throughout AAPowerLink’s project life cycle from planning through to decommissioning. Key to this approach is understanding the complex, multi-faceted and unique social and cultural landscape across the project footprint and tailoring consultation methods and communication materials to the needs of diverse stakeholders.

This report outlines SunCable’s engagement objectives and methodology and provides a brief analysis of key themes that emerged as part of consultation efforts to support the Supplement to the Environmental Impact Statement (SEIS). It builds on extensive engagement activities, communications materials and stakeholder mapping conducted in 2021 and 2022, and should be read in conjunction with Stakeholder Consultation Report (see Appendix 3.1 – SEIS) and Stakeholder Consultation Report (see Appendix I – Draft EIS).

The SEIS was on public exhibition for 37 business days from 7 December 2022 to 31 January 2023, which provided an extended opportunity for stakeholders to review the submission and submit formal comments to the NT EPA. The standard statutory exhibition period for a comparative submission is only 15 business days. Despite this extension, no public submissions were received other than from a NTG affiliated agency and interested stakeholder being the Northern Territory Land Corporation.

On 11 January 2023, SunCable announced it had entered Voluntary Administration (VA). The Proponent maintained relationships with key stakeholders during the VA process, ensuring stakeholders remained informed of the VA and asset sales progress, under the authorisation of the Administrator. All material lodged for assessment with the NT EPA continued to be publicly available on the NT EPA website and remains available for viewing. SunCable continued to progress several priority work streams, including the Indigenous Land Use Agreement (ILUA) consultations, preparing a formal response to the Direction from the NT EPA to provide Additional Information to the EIS, and the Commercial Offtake discussions. Stakeholder engagement was undertaken concurrently to support this work.

Project Overview

SunCable is an Australian, world-leading renewable energy company founded in 2018. Australia-Asia Power Link (AAPowerLink) AAPowerLink is SunCable’s flagship project which is leading and transforming the delivery of renewable energy to the Asia-Pacific.

The project features a high-capacity transmission system that will store and transmit renewable electricity from the Barkly Region of the Northern Territory to Darwin and Singapore markets.

AAPowerLink comprises six key components:

- Powell Creek Solar Precinct in the Barkly Region where electricity will be generated, stored and transmitted.
- Overhead Transmission Line (OHTL) to transmit electricity from the Solar Precinct to Darwin
- Darwin Converter Site including Voltage Source Converters, energy storage and network connection to supply electricity to the Darwin Region.
- Cable Transition Facilities at Murrumujuk to transition power cables between land and sea
- Subsea Cable System extending from the Cable Transition Facilities to Singapore
- Singapore Converter Station to receive electricity and supply the Singapore electrical network.

Refer to Chapter 2 Project Refinements of the SEIS and Section 1 of this submission for details of updated AAPowerLink components and activities.

Standards and Statutory Framework

AAPowerLink is being assessed at the level of an Environmental Impact Statement (EIS) by the NT EPA under the *Environment Protection Act 2019 (NT)* (EP Act), and under the *Environment Protection and Biodiversity Conservation Act 1999 (Cwth)* (EPBC Act) following an accredited assessment process.

The primary standards guiding consultation and engagement for AAPowerLink are:

- Stakeholder Engagement and Consultation: Environmental impact assessment guidance for proponents (NT EPA 2021). The guideline adopts as best practice the IAP2 principles for stakeholder engagement. It outlines expected formal feedback processes for projects on public exhibition and encourages proactive approaches to early engagement during preparation of environmental impact statements, starting at the scoping phase. The guideline defines engagement as including ‘communication, dialogue, listening and responding’.
- International Association for Impact Assessment (IAIA), Social Impact Assessment Principles (Vanclay, 2003) and Guidance (Vanclay et al. 2015), which are regarded as leading practice for social impact assessment and public participation.

- International Association for Public Participation (IAP2) Core Values, Spectrum of Participation and Quality Assurance Standard (2015) which are regarded as industry best practice for public participation (or community and stakeholder engagement) (see www.iap2.org.au).
- Under Section 43 of the EP Act, proponents have a responsibility to consult affected communities to promote an understanding of a proposed action and its potential impact and benefits.

These standards continue to guide stakeholder engagement and public consultation activities for the Project.

Furthermore, SunCable follows the best practice principles of engagement as follows:

- Provide for ‘broad community involvement during the process of environmental impact assessment and environmental approval’ (NT EPA, 2013)
- Recognise ‘the role that Aboriginal people have as stewards of their country as conferred under their traditions and recognised in law, and the importance of participation by Aboriginal people and communities in environmental decision-making process’ (NT EPA, 2013)
- Engage with stakeholders early in the environmental impact assessment process to communicate the proposal, its risks and potential impacts and mitigation and management measures. (NT EPA, Stakeholder Engagement and Consultation Guidance 2021).

Stakeholder Engagement

As per NT EPA 2021, stakeholders refer to landowners, communities, the public, government agencies, Aboriginal groups, industrial neighbours, partners, local government councils and any other organisation or individual who has the potential to be, directly or indirectly affected by the project and with an interest or stake in the outcome of a decision and/or the ability to influence its outcome, either positively or negatively.

SunCable acknowledges and recognises Aboriginal and Torres Strait Islander peoples as the first custodians of Australia, and pays their respects to their cultural beliefs, practices and ways of being. SunCable will continue to have dialogue with Aboriginal stakeholders and their representative bodies, operate with respect for cultural authority and seek to promote the cooperative use of Aboriginal knowledge of biodiversity and cultural heritage.

Within this report, where reference is made to Traditional Owners, it may include Traditional Owners, Native Title Holders, Custodians or their representatives.

Traditional Owner, in relation to a person or group of people, means:

- A common law holder where an area is subject to a determination of native title, and otherwise a native title holder as defined in section 224 of the *Native Title Act 1993* (Cwth)

- A traditional Aboriginal owner as defined in section 3 of the *Aboriginal Land Rights (NT) Act 1976* (Cwth)
- A custodian of a Sacred Site or Sacred Object as defined in the *Northern Territory Aboriginal Sacred Sites Act 1989* (NT).

SunCable continues to work with statutory authorities such as Aboriginal land councils, peak bodies and Aboriginal Areas Protection Authority (AAPA) to ensure that engagement with Aboriginal peoples is aligned with expectations set out in applicable legal frameworks across the NT.

Stakeholder Engagement Objectives

SunCable is committed to transparent dialogue with stakeholders throughout AAPowerLink’s life cycle from planning through to decommissioning. Key to this approach is understanding the complex, multi-faceted and unique social and cultural landscape across the project footprint and tailoring consultation methods and materials to the needs of diverse stakeholders. SunCable is committed to culturally appropriate engagement methodologies and materials which effectively communicate technical studies to ensure community knowledge and feedback inform balanced decision-making into AAPowerLink design and implementation.

The objectives underpinning SunCable’s engagement approach are:

- To foster and maintain ongoing, transparent dialogue with stakeholders using multi-method and adaptive communication approaches throughout the project life cycle from planning through to decommissioning
- To deliver timely, accurate and targeted communications to enable stakeholders to provide informed input to decision-making
- To build relationships and dialogue through plain speak, transparency and mutual respect
- To address and manage stakeholders’ expectations and concerns early and close feedback loops
- To apply culturally appropriate engagement and place-based communication methods that address the needs of stakeholders across the project footprint
- To apply a strategic and responsive approach to engagement and communication across the project life cycle.

Methodology

Highlights of EIS Consultation Campaign (2022)

In 2022 SunCable’s engagement team designed and delivered an extensive EIS consultation campaign to implement a robust stakeholder engagement strategy and communications schedule for the next phase of project development. The EIS consultation campaign was informed by a proactive mapping of stakeholders in the project footprint and careful consideration of how to effectively engage with each stakeholder group. Targeted communication materials were

developed to enhance stakeholder engagement and education, considering the needs of culturally and linguistically diverse communities.

Appendix 3.1 Stakeholder Consultation Report of the SEIS captures SunCable’s consultation activities across the project’s social areas of influence and the feedback received, both formally and informally, as part of the NT EPA’s statutory 60 business day public exhibition period for the Draft EIS. Highlights of the 2022 engagement campaign included: over 115 targeted stakeholder meetings; 58 stakeholder briefings during the public exhibition period; five regional presentations for industry and business co-facilitated by NT Chamber of Commerce and NT Indigenous Business Network; ten community information stalls across Darwin, Darwin Rura Area, Katherine, Tennant Creek, Elliott and Alice Springs; five presentations at NT conferences and industry dinners; six sponsorship events in the project footprint, and numerous other consultation events across Elliott, Tennant Creek, Darwin, Katherine, Alice Springs and Darwin Rural Area. The breadth of regional engagement, communications materials produced, and key questions and concerns raised by stakeholders are well-documented in the 2022 Stakeholder Consultation report.



Figure 1-1: NT consultation campaign highlights (2022)

Earlier stakeholder engagement undertaken in 2021 as part of the baseline Social Impact Assessment is documented in Appendix I of the Draft EIS. Both consultation reports referenced above are publicly available on the NT EPA’s website and should be read in conjunction with this 2023 report. SunCable’s engagement is ongoing and guided by continuous stakeholder mapping, stakeholder feedback, and best practice consultation guidelines.

SEIS Consultation Campaign

This 2023 Stakeholder Consultation Report focuses on SunCable’s engagement with stakeholders in the period following the submission of the SEIS from November 2022. The NT EPA nominated a public exhibition period of 37 business days from 7 December 2022 to 31 January 2023. This was over and above the standard 15 business days that a comparative statutory submission to the NT EPA attracts. The NT EPA determined that an extended exhibition period over the summer school holidays would provide stakeholders an equitable opportunity to review the material and provide comment. Leading up to and during the public exhibition period, SunCable contacted over 500 stakeholders to inform them of the milestone achieved, explain how stakeholders could have a say on the proposal and encourage stakeholders to reach out if they wished to participate in a formal project briefing to obtain more information. This was done to ensure that stakeholders could engage with project updates and give meaningful feedback to SunCable and the regulator during the public exhibition period.

Given the shorter duration of the SEIS exhibition period and wide reach of SunCable’s 2022 EIS consultation campaign, most project briefings delivered to support SEIS engagement were specific in nature and tailored to convey any proposed project refinements and findings from additional technical studies. Many organisations declined SunCable’s offer for a formal SEIS project briefing because they had been extensively consulted earlier in the year following the lodgement of the Draft EIS.

In late 2022, SunCable developed a consultation schedule to promote stakeholder engagement with the SEIS and the proposed project refinements, new technical studies and additional information provided to the NT EPA as part of the SEIS. SunCable’s engagement team mapped the key stakeholders in the project footprint and developed a consultation schedule to reach these groups. SunCable also identified gaps in previous consultation efforts and incorporated stakeholder feedback from the Draft EIS process to strengthen engagement.

A consolidated schedule of meetings and consultations for late 2022 and 2023 was rolled out in the project’s social area of influence, which included Darwin and the Darwin Rural Area, Katherine, Elliott, Marlinja, Tennant Creek, and Alice Springs. The purpose of these activities was to inform communities about key project updates and importantly, for SunCable to gain feedback on proposed changes in the SEIS. Activities included one-on-one stakeholder meetings, community information booths in public areas with high foot traffic, and meetings with peak bodies who then disseminated project information to membership organisations.

SunCable developed communication materials to support engagement activities (see Section 3.3). SunCable remains committed to ensuring engagement is culturally appropriate and place-based with project updates delivered in a timely manner. It is important to note that no public submissions were received other than from a NTG affiliated agency and interested stakeholder being the Northern Territory Land Corporation.

SunCable was in regular and robust discussion with key stakeholders during the reporting period and during VA, offering project briefings to Northern Territory Government (NTG) agencies, Aboriginal land councils, environmental groups such as Environment Centre NT, and regional

councils. A summary of stakeholder engagement activities across government, industry and business, landowners and affected communities, and Aboriginal stakeholder groups can be found in Section 3.5

On 11 January 2023, SunCable announced it had entered Voluntary Administration (VA). The Proponent maintained relationships with key stakeholders during the VA process, ensuring stakeholders remained informed of the VA process and asset sales progress, under the authorisation of the Administrator. This was achieved through regular stakeholder meetings, working group meetings, and regional visits by SunCable’s engagement team to check-in with stakeholders across the project footprint. All material lodged for assessment with the NT EPA continued to be publicly available on the NT EPA website and is still available for viewing. SunCable continued to progress several priority work streams, including the ILUA consultations, preparing a formal response to the Direction from the NT EPA to provide Additional Information to the EIS, and the Commercial Offtake discussions. Stakeholder engagement was undertaken concurrently to support this work.

Importantly, SunCable’s engagement activities expanded to encapsulate the requirements of each stage of the sales process; entering administration, announcement of the successful bidder, and completion of the sale. On 7 September 2023, SunCable formally exited VA with the completion of its asset sales process enabling a ramp-up in engagement activity.

SunCable continued to value grassroots activities and community investment opportunities by reaffirming its commitment to sponsoring the Barkly Football League and Big Rivers Football League, and the 2023 Elliott Fishing Competition. Additionally, in-kind support was offered by way of corporate participation in working groups and judging of the annual Chamber of Commerce NT Business Excellence Awards. SunCable was limited in its ability to undertake new community investments during the VA process.

Communication Materials

SunCable utilised a multi-method approach and developed a suite of communication materials for stakeholders to support SEIS consultation. These materials were designed to ensure accessibility to communities in the project footprint and surrounding areas, including culturally and linguistically diverse stakeholders such as Aboriginal peoples and other communities with limited familiarity with the project and environmental approvals process.

Materials developed included a fact sheet with frequently asked questions, project lifecycle visual infographic, updated computer-generated renders of project components (e.g. OHTL) across different landscapes, PowerPoint presentations tailored to various audiences, and posters depicting project refinements. SunCable remains committed to enhancing its engagement with affected communities and Aboriginal people in proximity to the project footprint and ensuring communication is culturally sensitive. An infographic of the project life cycle (see Appendix 1) was produced in response to a request from NLC and Aboriginal community members for more visual representations of project information.

Table 0-1: Methods of communication materials distribution

| SunCable employed the following methods of distribution |
|---|
| SEIS documents on public exhibition via the NT EPA website (from 7 Dec 2022 to 31 January 2023) |
| Press release published on the SunCable website |
| Promotion of SEIS on AAPowerLink ICN Gateway page |
| Advertisement in <i>The Australian</i> (9 Dec 2022) |
| Advertisement in <i>The NT News</i> (8 Dec 2022) |
| Hard copies of SEIS available at below locations from 7 Dec 2022 to 31 January 2023: <ul style="list-style-type: none"> • Adelaide River Post Office Store, 1 Stuart Highway, Adelaide River • Barkly Regional Council Office, 41 Peko Road Tennant Creek NT • Department of Environment, Parks and Water Security / NT EPA, Level 1 Arnhemica House, 16 Parap Road, Parap • Elliott Post Office, Elliott • Environment Centre Northern Territory, Unit 3, 98 Woods Street, Darwin • Katherine Public Library, Level 1, Randazzo Centre, Katherine Terrace, Katherine • Northern Land Council, 45 Mitchell Street, Darwin • Northern Territory Library, Parliament House, Darwin • Taminmin Community Library, Challoner Circuit, Humpty Doo Victoria Daly Regional Council – Pine Creek Office, 55 Moule Street, Pine Creek |
| Production of promotional materials to support the SEIS extended public consultation period (fact sheets, plain English graphics, renders, etc.) |

Stakeholder Mapping

Building on SunCable’s engagement strategy and Social Impact Management Plan (Draft EIS – Appendix I), SunCable identified additional stakeholders to consult within the project’s social areas of influence. Stakeholder mapping once again prioritised NT-based stakeholders, communities, organisations, agencies, and other interest groups across the footprint and their perceived or known level of interest in the AAPowerLink. Stakeholder mapping assessed who was targeted previously, identified gaps, and considered what specific strategies could be employed to disseminate information most effectively to the identified groups.

SunCable used the following questions to assess which stakeholder groups to engage with and what engagement approaches to take:

- How likely is it the stakeholder will be interested or potentially impacted by the project?
- How familiar is the stakeholder with the project?

- What was the stakeholder’s previous level of engagement (if any) with the Social Impact Assessment and Draft EIS consultation?
- If consulted previously, how can we demonstrate the stakeholder’s concerns, comments and/or aspirations have been considered?
- What technical experts do we need to facilitate this engagement?
- What communications materials do we need to enhance the stakeholder’s understanding?
- Can we meet in-person or online?
- Did the stakeholder make a submission, or were they referenced in a submission? For instance, SunCable met with BushfiresNT and the Amateur Fisherman’s Association of the NT (AFANT), and followed up again with the NT Field and Game Association. SunCable also met with NLC to better understand the concerns raised in its submission.

The assessment informed an NT stakeholder map, which the SunCable’s engagement team used to contact organisations to offer a project briefing and SEIS update. Key project information was distilled into a core PowerPoint presentation and slideshows were further tailored to anticipate the questions a particular stakeholder or group of stakeholders might ask. This was determined by reading previous agency and community submissions to the NT EPA for the Draft EIS, and by reviewing meeting notes and key issues raised in the previous Stakeholder Consultation Report and Social Impact Assessment. SunCable recorded each question asked and followed up with technical experts as required to ensure all stakeholder queries were adequately responded to.

The below table (Table 0-2) outlines the stakeholders offered a SEIS consultation briefing:

Table 0-2: Stakeholders offered a SEIS consultation briefing

| Stakeholder |
|---|
| Aboriginal Areas Protection Authority |
| Alice Springs Future Grid Committee |
| Alice Springs Town Council |
| Aboriginal Peak Organisations Northern Territory |
| Arid Lands Environment Centre |
| Barkly Regional Council |
| Coomalie Community Government Council |
| Commonwealth Department of Climate Change, Energy, Environment and Water |
| Darwin Harbour Advisory Committee including Amateur Fishermen’s Association of the NT |

| Stakeholder |
|---|
| Darwin Port Corporation |
| Desert Knowledge Australia |
| Durduga Tree Point Aboriginal Association |
| Environment Centre NT |
| First Nations Clean Energy Network |
| Journey Beyond Rail Expeditions |
| Julalikari Council Aboriginal Corporation |
| Kalano Community Association |
| Katherine Town Council |
| Kulumindini Aboriginal Corporation |
| Larrakia Development Corporation |
| Larrakia Nation Aboriginal Corporation |
| Linx |
| Litchfield Council |
| Marlinja Aboriginal Corporation |
| National Indigenous Australians Agency |
| Northern Land Council |
| Northern Prawn Fishery |
| NT Business Council including Advanced Manufacturing Growth Centre, Australian Computer Society, Australian Industry & Defence Network, Australian Institute of Architects, Australian Institute of Company Directors, Australian Petroleum Production & Exploration Association, Automotive Association of the NT, Chamber of Commerce NT, Civil Contractors Federation NT, CPA Australia, Energy Club NT, Engineers Australia Northern Division, Extractive Industry Association of the NT, Housing Industry Association, Information Communication Technology Industry Association NT, International Business Council (NT), Law Society NT, Manufacturers Council NT, Master Builders NT, Minerals Council of Australia, NT Indigenous Business Network, |

| Stakeholder |
|--|
| NT Livestock Exporters Association, NT Seafood Council, NT Cattlemen’s Association, NT Farmers, NT Road Transport Association, Property Council of Australia, Real Estate Institute of NT Inc., The Pharmacy Guild of Australia, Tourism Top End, Urban Development Institute of Australia (NT). |
| NT Field and Game Association |
| NT Legislative Assembly including the Member for Barkly and Member for Katherine |
| NTG Agencies and Departments including the NT Environment Protection Authority and its officers, NT Land Corporation, Land Development Corporation, NT Heritage Branch, NT Police, Fire and Emergency Services, Department of Infrastructure, Planning and Logistics, the Harbour Master, Department of Industry, Trade and Tourism, Department of Climate Change, Energy, the Environment and Water, Department of Chief Minister and Cabinet, Department of Environment, Parks and Water Security. |
| Original Power |
| Patta Aboriginal Corporation |
| Qube |
| Territory Natural Resource Management |

Engagement Activities

Government

SunCable regularly engaged with NT and Australian government agencies at a strategic level with feedback on the company’s engagement approach remaining positive. This report focuses on NT-specific engagements.

In 2022, the NTG and SunCable established six working groups represented by relevant NTG agencies and AAPowerLink members. The Working Groups had their own charters, objectives and work plans endorsed by the AAPowerLink Project Control Group (PCG).

Summary of Government Engagement:

- Senior Governance Group and Project Control Group meeting
- Seven meetings with NT EPA officers
- 1 briefing to NT EPA board
- Four meetings with Department of Climate Change, Energy, the Environment and Water
- Twenty-five AAPowerLink working group meetings with NT Government
- Seven SEIS briefings with local Government during the extended exhibition period

- Environment Approval Forum convened by the NT EPA to brief relevant and interested NT Government agencies
- Ongoing interaction with local and NT Government agencies and departments across Darwin, Katherine and Tennant Creek, including a briefing to Katherine NTG agencies
- BushfiresNT briefing – Senior Executive and relevant regional teams
- NT Opposition Members briefing.

Business and Industry

SunCable targeted its business and industry engagements across the NT to enhance general project awareness. In accordance with its draft Territory Benefit Plan, SunCable engaged the Industry Capability Network NT (ICN NT) to provide full, fair and reasonable opportunity to local industry. Four hundred and sixty-eight businesses have registered their interest against the AAPowerLink ICN Gateway portal and receive regular communications through ICN NT. SunCable held a SEIS briefing with the NT Business Council to streamline information sharing to industry representative bodies, whilst making itself accessible to industry outside of these forums.

A Port Capacity Working Group was established in this reporting period. Its remit is to ensure collaborative communication between the Darwin Port Corporation, Stevedores, NTG and SunCable representatives, whereby project logistical needs can be explored.

SunCable’s engagement team also regularly attended industry events, forums, and continued to build relationships with stakeholders. These events built upon previous forums in mid-2022 co-facilitated by SunCable, NT Chamber of Commerce and NT Indigenous Business Network to deliver information sessions for industry and business stakeholders in Elliott, Tennant Creek, Katherine, Alice Springs and Darwin. SunCable plans to develop further information sessions with industry and business in 2024 to inform stakeholders about project updates and enable stakeholders to have a say on project strategies such as the Territory Benefit Plan.

When SunCable formally exited VA, the team attended the Energy Club NT’s Meet the Buyer event and participated in NT Resources Week in September 2023.

Summary of Business and Industry Engagement:

- Regular meetings with ICN NT
- SEIS briefing provided to the NT Business Council represented by 31 industry bodies for information dissemination to industry
- Two Port Capacity Working Group meetings held during the reporting period. One dedicated to the SEIS within the extended public exhibition period
- Twelve industry networking events
- Meet the Buyer event as part of NT Resources Week
- NT Major Projects Conference.

Landowners and Affected Communities

SunCable remained committed to proactively identifying landholders that may be affected by AAPowerLink, with engagement focusing on potentially impacted landowners from SunCable’s preferred OHTL route. This activity focused on the OHTL deviations presented in the SEIS around Katherine, Pine Creek and Adelaide River. SunCable’s objective was to offer the information required to ensure landowners are informed and understand the project and its potential impacts and opportunities. Activities across the reporting period included ongoing consultation with affected landowners through the proposed OHTL deviations, both in-person, onsite, and remotely. Ongoing engagement with affected landholders will inform further OHTL corridor refinement. Due to the confidential nature of these negotiations, individual consultation efforts with landowners have not been detailed in this report.

To promote engagement with affected communities and landowners during the SEIS extended public exhibition period, SunCable also set up information booths in locations where there was ample foot traffic in the town centres of Darwin, Katherine and Tennant Creek to chat with passers-by about the project. A fact sheet was distributed to ensure stakeholders had the most up-to-date project information and answers to commonly asked questions. Additionally, communications materials and hard copies of the SEIS were made available at frequently visited public locations such as cafes and rest areas along the Stuart Highway. SunCable ran two advertisements in a local NT newspaper and a national publication at the start of the public exhibition period to let interested parties know how they could have a say on the proposal.

The below table (Table 0-3) outlines the community information stalls that were attended to support SEIS consultation and general community engagement:

Table 0-3: Community information stalls held by SunCable engagement team

| Location | Date attended |
|--|----------------|
| Coolalinga Shopping Centre, Coolalinga | 22 Oct 2022 |
| Fred’s Pass Markets, Fred’s Pass | 5 Nov 2022 |
| Woolworths Shopping Centre, Katherine | 6 Dec 2022 |
| Smith Street Mall, Darwin | 16 Dec 2022 |
| Berry Springs Markets, Berry Springs | 18 Dec 2022 |
| Fred’s Pass Show, Fred’s Pass | 27-28 May 2023 |

Aboriginal Consultation

SunCable acknowledges Aboriginal and Torres Strait Islander peoples as the first custodians of Australia and pays respects to their cultural beliefs, practices and ways of being. The Proponent

upholds the value of proactive, respectful and inclusive engagement with Aboriginal peoples connected to the lands and seas on which AAPowerLink seeks to operate.

SunCable continues to prioritise meetings with Aboriginal peak bodies that protect country, cultural heritage and sacred sites. Project briefings were provided to several Aboriginal and non-Aboriginal led organisations across industry, education and local government. Several Aboriginal organisations declined offers for briefings during this round of consultation.

Regular meetings occurred with SunCable, NLC and AAPA staff to ensure transparent communication and facilitate the scheduling of AAPA sacred site clearances and NLC-led consultations.

Summary of Aboriginal Engagement:

- Stakeholder engagement with residents and businesses in Elliott and Marlinja communities during the SEIS extended exhibition period
- A briefing to Northern Land Council, Central Land Council and Aboriginal Areas Protection Authority Officers
- Presentation to the Tiwi Land Council Full Council
- Participation in four Indigenous Land Use Agreement meetings with Traditional Owners organised by NLC
- Monthly meetings with SunCable, NLC and AAPA staff to facilitate information-sharing
- Twelve applications for AAPA Authority Certificates and Requests for Information lodged
- Meeting with Gwalwa Daraniki Association
- Regular interactions with Aboriginal Associations, Corporations, Representatives of Aboriginal people or industry, and Traditional Owners.

Limitations

SunCable's submission of the SEIS in November 2022 led the NT EPA to initiate a public exhibition period that spanned the December holiday period and continued into the new year. This may have presented a challenge to some stakeholders who were winding down their operations in preparation for the holiday period. However, the NT EPA opted to extend the standard 15 business day exhibition period by 21 business days to provide greater opportunity for stakeholder engagement over the majority of December and the entire month of January (7 December 2022 to 31 January 2023).

SunCable's engagement team carefully considered the holiday shutdown period in its planning and preparation; however, scheduling and availability conflicts were unavoidable. Efforts were taken to ensure key stakeholders with conflicts had access to the available information during the extended public consultation period, and many received in-person project briefings.

On 11 January 2023, SunCable announced it had entered Voluntary Administration (VA). This public announcement affected the scope of planned public engagements during the VA period which

continued until the sale of the company on 7 September 2023. During that time, the Proponent prioritised consultation with key stakeholders and maintaining stakeholder relationships through formal and informal meetings and events. The VA process was observed by key Aboriginal Representative organisations and reflected in questions asked by Traditional Owners. SunCable acknowledged this challenge and upheld its commitment to providing additional consultation opportunities to ensure key stakeholders were informed of any changes as and when they occurred.

Despite the limitations observed, key stakeholders acted in good faith with SunCable's efforts to keep them abreast of developments, and they continued to proactively engage with the Proponent.

Key Findings

During the extended public exhibition period, the NT EPA received one public submission. SunCable has responded directly to the NT Land Corporation to address their concerns raised in the submission.

Consultation relating to the SEIS built upon SunCable's extensive engagement efforts in 2021 and 2022 to reach stakeholders in the project footprint. The engagement during this reporting period revalidated key findings obtained during the EIS consultation. Stakeholders remain interested in four key areas:

- **Project Description:** stakeholders were interested in the OHTL and electrode infrastructure, construction, and understanding any potential interactions with nearby infrastructure, communities and assets
- **Environmental Impacts:** stakeholders were interested in cable laying methodology, land clearing and potential marine impacts and fire management
- **Workforce Development:** stakeholders were interested in job numbers and workforce modelling, and employment opportunities for local Aboriginal groups
- **Electricity Access and Energy Security:** stakeholders were interested in the distribution of electricity and whether household electricity prices are expected to decrease for consumers.

A detailed record of these findings and feedback collated from the regions can be found in the 2022 Appendix 3.1 – Stakeholder Consultation Report of the SEIS.

The limitations outlined in Section 3.6 added a layer of complexity to SunCable's stakeholder engagement activities. This resulted in stakeholder curiosity surrounding the likelihood of AAPowerLink proceeding as outlined in the SEIS. SunCable is committed to keeping its key stakeholders informed and will continue to build on the goodwill and relationships fostered with stakeholders.

Conclusion

In preparing for the SEIS extended public exhibition period, SunCable built upon its existing stakeholder relationships, and worked hard to incorporate feedback received from key stakeholders into all levels of project planning. For instance, since the SEIS submission, SunCable has restructured its Social Impact Management Plan (SIMP) in response to the Northern Land Council's recommendations. This has included the development of a monitoring and evaluation framework, revised key performance indicators, and consolidation of the company's commitments into more tangible action plans so that stakeholders are better able to hold SunCable to account.

SunCable remains committed to facilitating open and honest information sharing, and continues to advance critical ILUA discussions with Aboriginal stakeholders through the NLC. Delivering on its commitments outlined in key strategies such as the Territory Benefit Plan and SIMP remains a key focus for the Proponent.

Community sentiment towards AAPowerLink generally remains positive, with stakeholders supportive of the development of large-scale renewable energy, and the supply of green energy to the Northern Territory and Singapore. There is significant interest in understanding how Territorians can benefit and how NT businesses and community members alike can maximise their participation. Timing is critical to ensure that local businesses have enough time to scale up and Aboriginal stakeholders in particular are interested in how they might be able to develop their own enterprises to support AAPowerLink. Stakeholders wish to be informed of detailed project specifications and proposed infrastructure, construction timeframes and understand how SunCable will manage potential environmental impacts on land and sea.

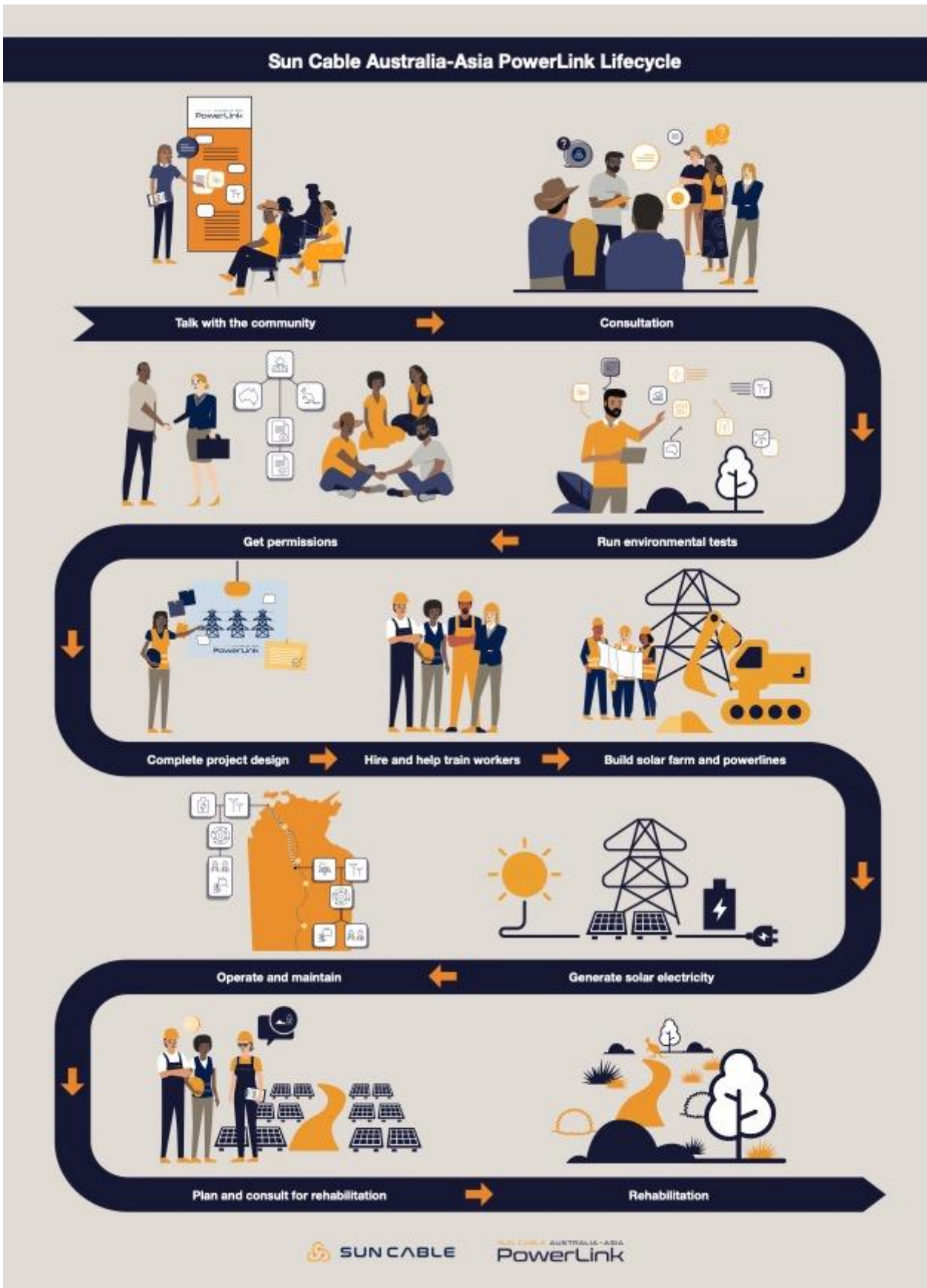
Stakeholders remain positive about the potential for economic opportunities to the Territory and what this means in terms of long-term workforce development. Systemic issues impacting economic participation such as housing shortages, low population growth, and barriers to economic participation in remote Aboriginal communities are concerns for stakeholders. Although they recognise these issues are deeply embedded in the NT and not a product of the AAPowerLink specifically, they are hopeful that SunCable will work with communities and stakeholders in good faith to implement initiatives that incorporate stakeholder feedback about what works and what doesn't in development.

Stakeholders remain acutely aware of the potential impacts of development on sites of cultural, heritage and historical significance and feel invested in preserving these values. Stakeholders want to see SunCable demonstrate effective engagement with landowners, residents, community groups, industry, local businesses, Traditional Owners and Custodians across the project footprint beyond statutory consultation campaigns. Some of the additional consultation held for the SEIS provided practical insight and suggestions related to the planning, construction and operational phase, including from BushfiresNT and AFANT, and some stakeholders commended the additional work SunCable undertook for the SEIS, for instance the Visual Impact and Amenity study.

SunCable has an extensive engagement framework in place to guide stakeholder engagement activities moving forward. SunCable thanks all the stakeholders, agency representatives and

community members who provided feedback and comments. The engagement is invaluable, and it highlights key issues and concerns for the Proponent's consideration.

Appendix 1 – Project Lifecycle Infographic



Appendix 2 – Advertisement in *The Australian*

16 AUGUST 2023

BUSINESS

THE AUSTRALIAN
FRIDAY, DECEMBER 9, 2022
theaustralian.com.au/businessreview 17

BHP puts \$75m aside for early coal mine closures

MINING GIANT BHP IS quietly planning for the possible early closure of the company's flagship coking coal mines in Queensland, its financial accounts show, with the company pointing to a windfall royalty hike for the decision.

The increases were a shock feature of Queensland's July state budget, and are now expected to deliver \$3bn to the state's coffers in the current financial year, up from initial estimates of \$650m.

BHP chief executive Mike Henry has already declared the company will not make any new investments in Queensland while the windfall royalty rates remain in place.

But the Australian can reveal that BHP is also planning for the potential early closure of existing BMA mines in Queensland, setting aside \$75m in its annual financial accounts for early closure and rehabilitation costs.

And, while BHP said a review of the longevity of its mines was also required in light of China's shadow ban on Australian coal and moves to try to decarbonise the steel industry over the next few decades, the company also pointed the finger squarely at Queensland's royalty rates.

In addition to global factors, the company's accounts say the \$1.575bn (\$1bn) increase in its BMA closure provisions "reflects a preliminary assessment of the po-



THE SHOWN

tentia impact on BMA mines resulting from the significant increase in coal royalties applicable in Queensland from July 2022.

BHP's BMA group has a decade's worth of coal left in its deposits and its annual report says its existing mine leases have expiry dates ranging out as far as 2043.

While no closure decisions are likely in the immediate future, BMA asset president Mauro Neves confirmed on Thursday

that the review into early coal mine closures in Queensland as it considers its coal mines' future.

day after Australia's biggest coal producer, Glencore, confirmed it has pulled plans to build a new \$2bn thermal coal mine near Emerald in the Bowen Basin.

While Glencore also cited global factors for the decision, the company said Queensland's royalty rates were a significant factor.

"Adapted decisions like the Queensland super royalty hike have damaged investor confidence, increased uncertainty and

raised a red flag with key trading partners. Genuine and timely consultation with companies on the detail of policy reforms is crucial to avoid continued uncertainty," a Glencore spokesman said.

But environmental groups welcomed Glencore's decision on Thursday, with Australian Centre for Corporate Responsibility project director Naomi Hogan suggesting the decision had more to do with investor pressure.

"We remain focused on cost reductions and productivity initiatives," she said.

"We're confident that the Queensland royalty rate regime will be able to provide medium-term volume and unit cost guidance," the company said.

But BHP also said it was "preserving options" for future developments in Queensland, and in August lodged federal environmental applications for a new mine near its Blackwater operations which could allow coal production for another 90 years.

Office beats home for building workplace culture, bosses say

Continued from Page 13



Baker

OR MOVING THE working-from-home decision process to a team level. Last year's uncertainty and the psychological toll of lockdowns on the workforce left most too tinged to speak out on the downside of WFH. Today, employee wellbeing is a reason to come back to the office.

"Our business has been built on connection, community and relationships; being together is important to us," Bendigo & Adelaide chief executive Marie Baker said. "The wellbeing of our colleagues is a key consideration here. Being able to actually see and connect with our people in person is a huge benefit to us."

At building-materials manufacturer Brickworks, Lindsay Partridge said most jobs were in production plants or sales roles and working from home was impractical. "We believe a collaborative workplace culture is best fostered through our office environment," she said.

Some of the biggest businesses report an increased willingness to come back to the office. "We continue to see increasing numbers of team members in our offices each month," the Commonwealth Bank's Matt Conyn said. "The workplace plays an important role in facilitating connection, innovation, culture, career development and the ability to build and strengthen relationships."

Qantas chief executive Alan Joyce said he was seeing business travel increase, indicating a move

said enterprise agreements would begin including hybrid working policies, a change that could motivate greater interest in using the desk.

Telstra chief executive Vicki Brady said: "There is no talk of returning to previous ways of working at Telstra - we don't waste time debating who should be in the office and when. We are all-in on hybrid. For us, work is a thing you do, not a place you go."

From the get-go, NIB's Mark Fitzgerald has been a champion of WFH. "Today, we pay our people a working-from-home allowance, recognising we're not only hiring their homes as an office, but we're saving a lot of money in office space," he said. "We're sharing the productivity gain."

While the survey reveals a genuine change in thinking at the top, there remains a sizeable group of white-collar businesses where the message is still a general one around workplace flexibility and hybrid, including the big four consumer firms.

But the important takeout from the survey is that - more and more - chief executives are realising too many days working at home is eating away at workplace culture, often at an intangible level that cannot be measured easily. Brookfield's Stewart Ippson said the firm's overarching philosophy remained office-first. "That is where we collaborate and perform at our best," he said. "It's also important for real-time training and mentoring, managing risk and building culture."

Fonterra lifts forecast, cuts farm price guidance

JARED LYNCH

FONTERRA, the world's biggest dairy exporter, says its full-year earnings will soar up to 85% per cent higher than expected as cooperative narrows its forecast price it will pay farmers for their milk.

The New Zealand dairy titan said on Thursday it expected to deliver earnings of between NZ\$26 and NZ\$28 a share, up from the NZ\$25-NZ\$26 it previously forecast.

The co-operative has lowered its farmgate price guidance for the 2023-24 season, expecting to pay farmers NZ\$25.50-NZ\$26.50 per kilogram of milk solids, down from NZ\$25.50-NZ\$26.50. Net profit rose 84 per cent to NZ\$244m (\$201m) in the three months to October 31. Revenue increased 32 per cent to NZ\$2.79bn.

"The sustained strong demand in our protein portfolio gives us the confidence to upgrade our company guidance, although the wider range reflects the volatility in the market which we expect to continue in the short to medium term," CEO Miles Hurrell said.

"If these conditions continue for a further extended period it could have an additional positive impact on forecast earnings."

The quarterly strong result was despite the co-operative experiencing higher costs "at every point in our supply chain".



"There's no doubt that we're in a period of increased global uncertainty. Inflationary pressures are being felt both on farm and across our business, but looking further out the fundamentals for dairy remain positive," Mr Hurrell said.

Milk production also is lower across all export regions, with New Zealand down 2.5 per cent compared with the same period last year. Demand for whole milk powder in China has softened, but the co-operative has managed to sell more product to other markets.

Fonterra abandoned a \$1.2bn fit of its Australian business in September as the milk pool continued to shrink and farm gate prices surged 30 per cent higher than expected. It also settled a class action with Australian farmers for \$25m last month over its decision to "claw back" milk payments.

\$660m wiped from Downer

Continued from Page 13

comprehensive review it hoped to be completed before its half-year results in February would uncover how the oversight occurred.

"We religiously review work-in-progress level in the business and in this case, the circumstances around the very significant number of work orders has presented the ability for it to be opaque," he said. "What is clear now is that those reviews had not focused on the point of revenue recognition of the ... work orders involved in this contract."

"It is still early days for us to define on what happened. Whether it was mismanagement of the contract and if that meets the definition of fraud will be something we'll look at."

He did not believe accounting irregularities were present in any other contracts Downer held and said it expected to be able to return this contract to profitability.

But the group slashed its profit guidance for the 2023 financial year by up to \$60.3m on the back of the discovery. In August, Downer had said it expected 10-20 per cent growth in underlying profit for the financial year - assuming no material Covid-19, weather or labour shortages. That would have represented an upswing of up to

\$45m, to \$270.3m, from \$225.3m booked in the 2022 financial year.

"After analysis of the group's trading for October and November, it has become clear that the guidance for the milk pool continued to shrink and farm gate prices surged 30 per cent higher than expected. It also settled a class action with Australian farmers for \$25m last month over its decision to 'claw back' milk payments.

In November, Downer was issued a first strike after more than 56 per cent of shareholders voted against the remuneration report at its annual meeting, which came after it reported a 14 per cent fall in net profit for the previous financial year to \$225.3m.

"It is still early days for us to define on what happened. Whether it was mismanagement of the contract and if that meets the definition of fraud will be something we'll look at."

He did not believe accounting irregularities were present in any other contracts Downer held and said it expected to be able to return this contract to profitability.

But the group slashed its profit guidance for the 2023 financial year by up to \$60.3m on the back of the discovery. In August, Downer had said it expected 10-20 per cent growth in underlying profit for the financial year - assuming no material Covid-19, weather or labour shortages. That would have represented an upswing of up to

NOTICES

AAPowerLink Australia Assets Pty Ltd - Australia-Aala PowerLink Supplement to the Environmental Impact Statement - Open for Public Consultation

The Proponent, **AAPowerLink Australia Assets Pty Ltd** is a wholly owned subsidiary of Sun Cable Pty Ltd, an Australian-based, world-leading renewable energy company, with a mission to supply renewable electricity from resource abundant regions to growing load centres, at scale. The Proponent is proposing to build Australia-Aala PowerLink (AAPowerLink), a 600 kVdc renewable energy transmission project which will harness solar energy from the Barkly Region of the Northern Territory for export to Darwin and Singapore markets. The Project will utilise a high voltage direct current cable transmission network from the Barkly Region to Murrumbidgee on Gurney Peninsula, and subsea cables to Singapore.

The AALink proposal is being assessed at the level of Environmental Impact Statement (EIS) by the Northern Territory Environmental Protection Authority (NT EPA) under the Environmental Protection Act 2019 and an Accredited Assessment Process under the Environmental Protection and Biodiversity Conservation Act 1999. The SEIS has been submitted to the NT EPA and can be viewed and obtained on the Sun Cable website (<https://suncable.energy/>) and NT EPA website (<https://eipa.nt.gov.au/australialinkopen-consultation/>).

A Draft EIS was available for public comment from 20 April to 15 July 2022. On 28 September 2022, the NT EPA provided a Direction to Prepare a Supplement to the EIS (SEIS) to address submissions and provide additional information. The SEIS has been submitted to the NT EPA and can be viewed and obtained on the Sun Cable website (<https://suncable.energy/>) and NT EPA website (<https://eipa.nt.gov.au/australialinkopen-consultation/>).

Interested persons or organisations may review the SEIS and make written submissions on or by 31st January 2023. Written submissions can be made via the NT EPA website (<https://eipa.nt.gov.au/australialinkopen-consultation/>) or to NT EPA, GPO Box 3679, Darwin NT 0801. Call 08 8904 4218 to discuss recording a verbal submission or alternative method. All submissions will be treated as public documents unless confidentiality is requested. Hard copies will be available at NT EPA, Adelaide River Post Office, Barkly Regional Council Office, Elliot Post Office, Environmental Centre NT, Katherine Public Library, Northern Land Council (Darwin), NT Library, Tennant Community Library, and Victoria Daily Regional Council Post Office.

Important notice to ME customers.

We are making the following changes to our variable interest rates.

| Effective date | Interest rate | With Member Package |
|---|---------------|-------------------------|
| Home loan reference rates (owner occupier – principal and interest). | | |
| Basic Home Loan | 10-12-22 | 6.73% p.a. – |
| Flexible Home Loan | 10-12-22 | 7.32% p.a. / 7.12% p.a. |
| Flexible Home Loan – Settled before 01/09/98 | 15-12-22 | 7.32% p.a. – |
| Standard Home Loan | 10-12-22 | 7.32% p.a. / 7.12% p.a. |
| Standard Home Loan – Settled before 01/09/98 | 15-12-22 | 7.32% p.a. – |
| Ultimate Offset Account | 10-12-22 | 7.32% p.a. / 7.12% p.a. |
| Home loan reference rates (investor – principal and interest). | | |
| Basic Home Loan | 10-12-22 | 7.03% p.a. – |
| Flexible Home Loan | 10-12-22 | 7.62% p.a. / 7.42% p.a. |
| Flexible Home Loan – Settled before 01/09/98 | 15-12-22 | 7.62% p.a. – |
| Standard Home Loan | 10-12-22 | 7.62% p.a. / 7.42% p.a. |
| Standard Home Loan – Settled before 01/09/98 | 15-12-22 | 7.62% p.a. – |
| Ultimate Offset Account | 10-12-22 | 7.62% p.a. / 7.42% p.a. |
| Home loan reference rates (owner occupier – interest only). | | |
| Basic Home Loan | 10-12-22 | 7.23% p.a. – |
| Flexible Home Loan | 10-12-22 | 7.82% p.a. / 7.62% p.a. |
| Standard Home Loan | 10-12-22 | 7.82% p.a. / 7.62% p.a. |
| Ultimate Offset Account | 10-12-22 | 7.82% p.a. / 7.62% p.a. |
| Home loan reference rates (investor – interest only). | | |
| Basic Home Loan | 10-12-22 | 7.48% p.a. – |
| Flexible Home Loan | 10-12-22 | 8.07% p.a. / 7.87% p.a. |
| Standard Home Loan | 10-12-22 | 8.07% p.a. / 7.87% p.a. |
| Ultimate Offset Account | 10-12-22 | 8.07% p.a. / 7.87% p.a. |

For details visit mebank.com.au or call 13 15 63.

ME Bank is a division of Bank of Queensland Limited ABN 32 009 656 740, AFSL and Australian Credit Licence 244616. ME17808/2022

NOTICE TO CUSTOMERS

VIRGIN MONEY REWARD ME HOME LOAN

These changes apply to Virgin Money home loans settled after 2016

EFFECTIVE FROM 9 DECEMBER 2022

| Change to Lending Reference Interest Rates | Interest rate |
|---|---------------|
| Virgin Money Variable Rate | 7.12% p.a. |
| Virgin Money Variable Investment Rate | 7.34% p.a. |
| Virgin Money Variable Interest Only Rate | 7.32% p.a. |
| Virgin Money Variable Investment Interest Only Rate | 7.54% p.a. |

FOR INFORMATION: CALL US ON 13 81 51 OR GO TO VIRGINMONEY.COM.AU

Credit Provider: Bank of Queensland Limited ABN 32 009 656 740, AFSL and Australian Credit Licence No 244616

NOTICE TO CUSTOMERS

Effective on and from 9 December 2022

Change to Lending Reference Interest Rates

| Home Lending | Interest rate |
|---|---------------|
| Clear Path Variable Housing Rate | 6.99% p.a. |
| Clear Path Variable Housing Interest Only Rate | 7.38% p.a. |
| Clear Path Variable Investment Housing Rate | 7.62% p.a. |
| Clear Path Variable Investment Housing Interest Only Rate | 7.87% p.a. |
| Clear Path Line of Credit Rate | 7.78% p.a. |
| Clear Path Line of Credit Investment Rate | 8.22% p.a. |
| Economy Variable Housing Rate | 6.32% p.a. |
| Economy Variable Housing Interest Only Rate | 6.50% p.a. |
| Economy Variable Investment Housing Rate | 6.67% p.a. |
| Economy Variable Investment Housing Interest Only Rate | 7.02% p.a. |
| Standard Variable Housing Rate | 8.21% p.a. |
| Standard Variable Housing Interest Only Rate | 8.52% p.a. |
| Standard Variable Investment Housing Rate | 8.76% p.a. |
| Standard Variable Investment Housing Interest Only Rate | 9.01% p.a. |
| Low Doc Standard Variable Housing Rate | 9.46% p.a. |
| Low Doc Standard Variable Housing Interest Only Rate | 9.77% p.a. |
| Low Doc Standard Variable Investment Housing Rate | 10.01% p.a. |
| Low Doc Standard Variable Investment Housing Interest Only Rate | 10.26% p.a. |
| Come-Go Line of Credit Rate / Line of Credit Rate | 9.52% p.a. |
| Investment Come-Go Line of Credit Rate / Investment Line of Credit Rate | 9.96% p.a. |
| Low Doc Line of Credit Rate | 10.72% p.a. |
| Low Doc Investment Line of Credit Rate | 11.16% p.a. |
| Personal Lending | |
| Unsecured Personal Overdraft Rate | 13.79% p.a. |
| Mortgage Secured Personal Overdraft Rate | 7.61% p.a. |
| Business Lending | |
| Overdraft Residential Security Base Rate | 10.72% p.a. |
| Overdraft Other Security Base Rate | 11.57% p.a. |
| Term Residential Security Base Rate | 9.77% p.a. |
| Term Other Security Base Rate | 10.77% p.a. |
| Line of Credit Residential Security Base Rate | 10.32% p.a. |
| Line of Credit Other Security Base Rate | 11.07% p.a. |

For information, visit your local branch, call us on 1300 55 72 72 or go to our website boq.com.au

Bank of Queensland Limited ABN 32 009 656 740, AFSL and Australian Credit Licence No 244616. 800191/2022

Appendix 3 – Advertisement in *The NT News*

38 CLASSIFIEDS

THURSDAY DECEMBER 8 2022 NTNEWS.COM.AU

Welcome to Australia's leading network of trusted local classifieds

To place business advertising
 13 11 13 or buysearchsell.com.au

Adults

Adult & Escort Services

Adult Relaxation

Bianca
 IN/OUT
 Call
 0468 738 463

Jessica Erotic Massage
 3/61 Driver avenue
 Palmerston
 Pretty Mimi.
 0410 381 362

KIKI
 100% New to
 Darwin
 Pretty, Slim
 In/out calls
 0409 277 072

PALMERSTON EVA
 Relax, Friendly Nice Body
 In/outcalls
 0401 423 542

Find it with
 Buy Search Sell

Notices

Public Notices

**Sun Cable Pty Ltd - Australia-Asia PowerLink
 Supplement to the Environmental Impact Statement -
 Open for Public Consultation**

The Australia-Asia PowerLink (AAPowerLink) is a proposed giga-scale renewable energy transmission project which will harness solar energy from the Barkly Region of the Northern Territory for transmission to Darwin and Singapore markets. AAPowerLink is being developed by the Proponent, AAPowerLink Australia Assets Pty Ltd, a wholly owned subsidiary of Sun Cable, an Australian-founded, world-leading renewable energy company.

The NT EPA website <https://ntepa.nt.gov.au/consultation/open-consultations> or to NT EPA, GPO Box 3675, Darwin NT 0801. Call 08 8924 4218 to discuss recording a verbal submission or alternative method. All submissions will be treated as public documents unless confidentiality is requested.

Hard copies of the SEIS are available for viewing at these locations:

- NT EPA, Level 1, Arnhemica House, 16 Parap Road, Parap, NT
- Adelaide River Post Office Store, 1 Stuart Highway, Adelaide River, NT
- Barkly Regional Council Office, 41 Peko Road, Tennant Creek, NT
- Elliott Post Office, Elliott, NT
- Environment Centre Northern Territory, Unit 3, 98 Woods Street, Darwin, NT
- Katherine Public Library, Level 1, Randazzo Centre, Katherine Terrace, Katherine, NT
- Northern Land Council, 45 Mitchell Street, Darwin, NT
- Northern Territory Library, Parliament House, Darwin, NT
- Taminmin Community Library, Challoner Circuit, Humpty Doo, NT
- Victoria Daly Regional Council – Pine Creek Office, 55 Moule Street, Pine Creek, NT

The AAPowerLink proposal is being assessed at the level of **Environmental Impact Statement (EIS)** by the Northern Territory Environment Protection Authority (NT EPA) under the Environment Protection Act 2019 and an Accredited Assessment Process under the Environment Protection and Biodiversity Conservation (EPBC) Act.

A Supplement to the EIS (SEIS) has now been submitted to the NT EPA and can be viewed on the Sun Cable website (<https://suncable.energy/>) and NT EPA website (<https://ntepa.nt.gov.au/consultation/open-consultations>). The SEIS has been prepared in accordance with the Direction to Prepare a Supplement issued by NT EPA on 28 September 2022.

The SEIS is on public exhibition until 31st January 2023 and interested persons or organisations may make written submissions to the NT EPA via

SUN CABLE AUSTRALIA-ASIA PowerLink

Contact us
 Visit www.suncable.energy or email info@aapowerlink.sg

13 11 35

Tributes

Tributes & Condolences

Graham MCMAHON

"Be counselled about your health, worth more than riches, wealth. Remember your true assets counted by a useful life lived contentedly." GAF

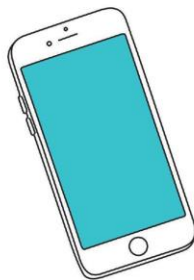
Husband, Dad, Grandpa, Great Grandpa and friend to many

You left earth side 1 year ago today and you lived your life as your poem says.

Missed and remembered with love:
 Kath, Lyn, Paul, Shaun, Brendan, Jan, Roy, Ryan, Ellen, Willie Oscar, Connor and Kane

Find national notices online

That's not all, folks
 Discover more online at Buy Search Sell.



buy search sell .com.au

Your family history

Search over 1.9 million historical notices dating back over 30 years.

Be a happy camper

Get everything you need for an outdoor adventure at Buy Search Sell.

buy search sell .com.au

Appendix 4 – Information card

SUN CABLE AUSTRALIA-ASIA
PowerLink

The Australia-Asia PowerLink

A unique opportunity
Maximising the benefits of the AAPowerLink and minimising harm to the environment

Transmission

AAPowerLink will use **High Voltage Direct Current (HVDC) transmission**, which has lower transmission losses than Alternating Current (AC) transmission. This means AAPowerLink will be able to transmit electricity efficiently over long distances.

Investment

AAPowerLink is expected to reach **Final Investment Decision (FID) in 2024** and break ground in the same year. Reaching FID will provide certainty of the project timeline.

Demand

Twice as much electricity will be needed in 2050 compared to today. To meet this demand with renewable energy, and enable emerging industries like green hydrogen, renewable electricity capacity needs to scale up by 10x or more. Put differently, **we need to add 670 GW of renewable energy generation each year.**

AAPowerLink

The Australia-Asia PowerLink (AAPowerLink) plans to use Australia's abundant solar resource to power Darwin and Singapore with high capacity, competitively priced, and dispatchable renewable electricity.

By its fourth year of operation, the AAPowerLink will be carbon negative - it will have no net carbon emissions, and the electricity will be emissions free. This important step in the transition to renewables will reduce global emissions and help mitigate climate change risk.

[suncable.energy](https://www.suncable.energy)

Appendix 5 – Fact Sheet

Fact sheet

SUN CABLE AUSTRALIA-ASIA
PowerLink

Australia-Asia PowerLink (AAPowerLink)

Who is Sun Cable?

Sun Cable is an Australian, world-leading renewable energy company founded in 2018. The company has offices in Darwin, Sydney, Melbourne, Brisbane, Jakarta and Singapore.

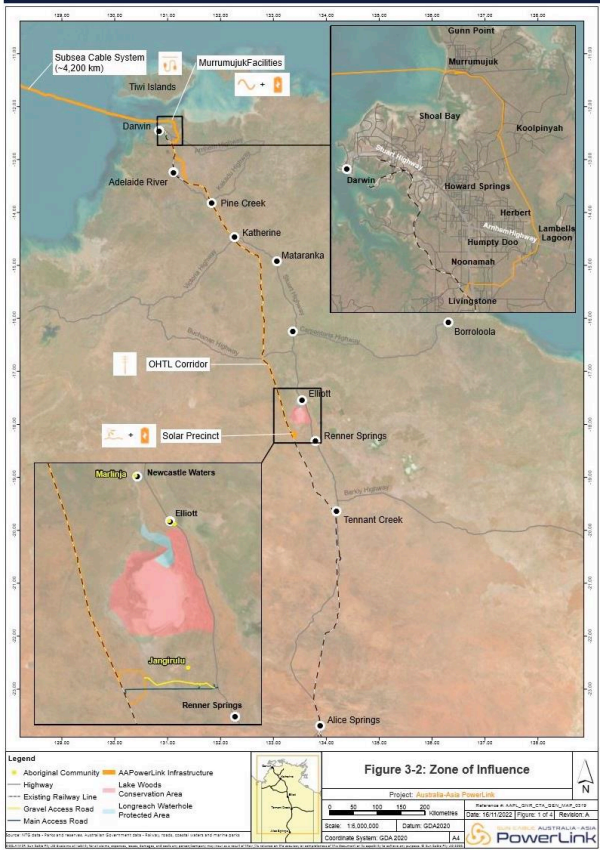
You can find out more at www.suncable.energy

- ### AAPowerLink comprises six key components:
- Powell Creek Solar Precinct in the Barkly Region where electricity will be generated, stored and transmitted
 - Overhead Transmission Line to transmit electricity from the Solar Precinct to Darwin
 - Darwin Converter Site including Voltage Source Converters, energy storage, and network connection to supply electricity to the Darwin Region
 - Cable Transition Facilities at Murrumujuk on Gunn Point Beach to transition power cables between land and sea
 - Subsea Cable System extending from the Cable Transition Facilities to Singapore
 - Singapore Converter Station to receive electricity and supply the Singapore electrical network.

What is AAPowerLink?

AAPowerLink is Sun Cable's flagship project which is leading and transforming the delivery of renewable energy to the Asia-Pacific.

AAPowerLink features a high-capacity transmission system that will store and transmit renewable electricity from the Barkly Region of the Northern Territory to Darwin and Singapore markets.



Fact sheet

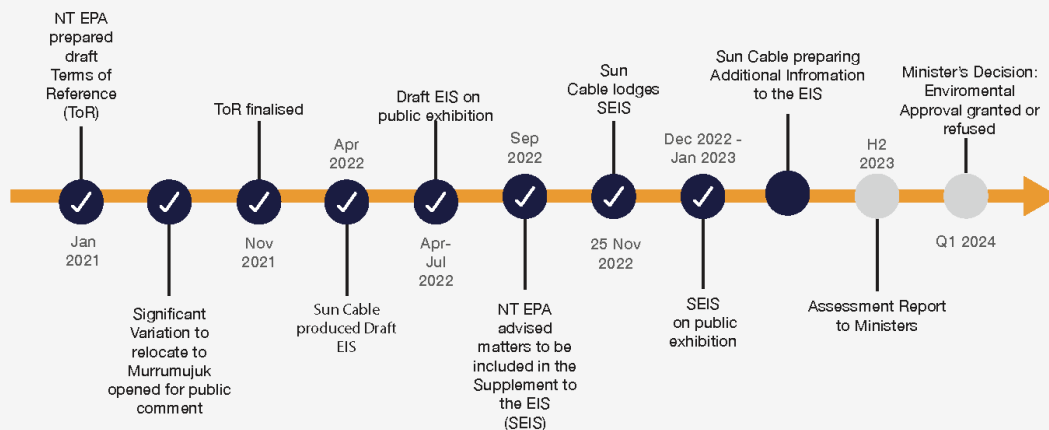


Changes detailed in the Supplement to the EIS

Since the release of the Draft Environmental Impact Statement (EIS) in April 2022, Sun Cable consulted across the Northern Territory to raise awareness of AAPowerLink and talk with stakeholders and communities. The Supplement to the EIS (SEIS) was produced in response to these conversations, public submissions and the Direction provided by the NT EPA.

Studies and assessments have allowed Sun Cable to refine AAPowerLink’s project footprint, with final locations of infrastructure to be informed by consultation, permissions and further environmental and technical assessments.

Environmental Impact Statement - Process



OHTL Route

The areas of interest presented in the Draft EIS have been refined and a preferred OHTL route has now been selected through Katherine, Pine Creek and Adelaide River. Route refinement included reviews of constraints mapping layers depicting land access, identified areas of cultural heritage significance, ecology, geology, and flooding potential and Northern Territory Government policy documents.



Fact sheet

SUN CABLE AUSTRALIA-ASIA
PowerLink

Preferred OHTL Route: Katherine

The preferred route at Katherine facilitates crossing the Victoria Highway before navigating through several parcels of land and crossing the Katherine River. Once on the northern side of the Katherine River, the route is generally aligned with the railway corridor to minimise any potential impacts.

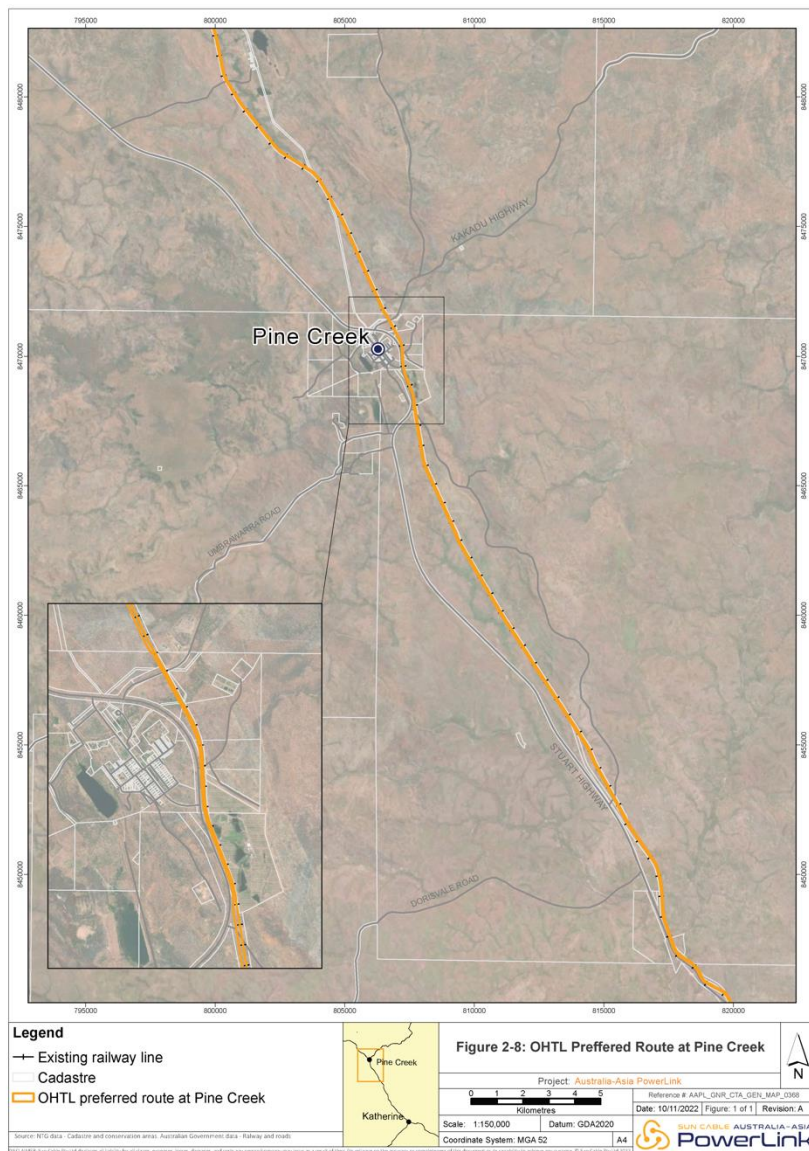


Fact sheet

SUN CABLE AUSTRALIA-ASIA
PowerLink

Preferred OHTL Route: Pine Creek

The preferred route at Pine Creek seeks to minimise impacts on future land uses by co-locating with existing linear infrastructure. It is generally adjacent to the railway corridor on the eastern side of the Stuart Highway. This alignment extends for approximately 4 km until the route crosses the Kakadu Highway and re-enters the railway corridor further North.



Fact sheet

SUN CABLE AUSTRALIA-ASIA
PowerLink

Preferred OHTL Route: Adelaide River

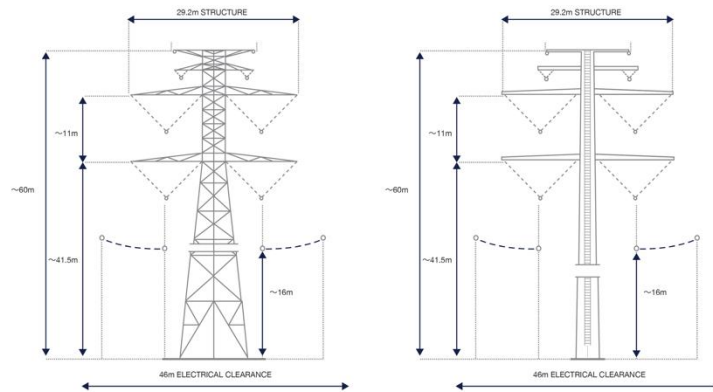
The preferred route at Adelaide River was designed to mitigate the spatial constraints where the railway corridor is too narrow and passes urban areas. It extends east of the township predominantly through pastoral and rural land.



Fact sheet

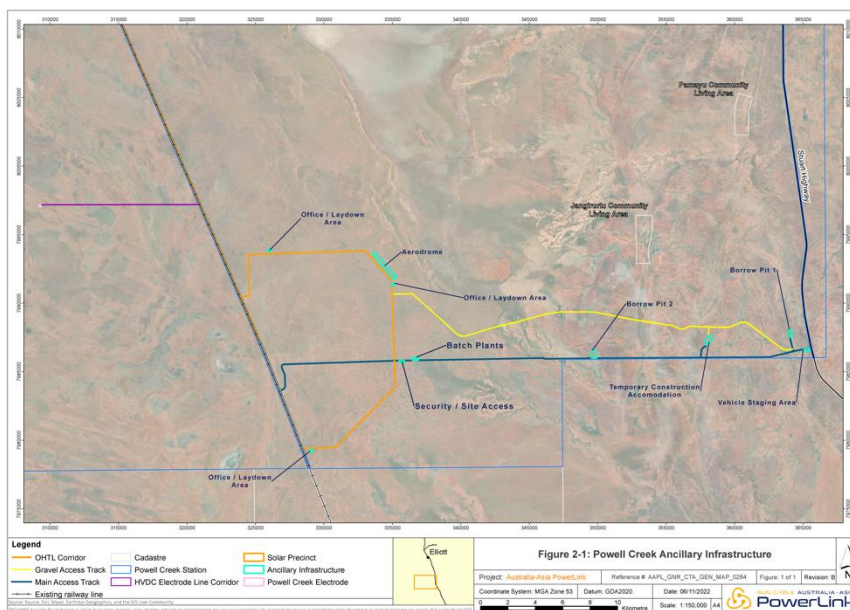
OHTL Structure

The OHTL will be likely consist of Lattice Tower and Steel Monopole structures. The Front-End Engineering Design (FEED) phase of the project will determine the quantity and location of each of these types of towers within the OHTL route.



Powell Creek Solar Precinct:

The Draft EIS details that the majority of Ancillary Infrastructure (AI) within the 12 000 ha Solar Precinct. AI is required to facilitate the construction and operation of the Project. Ongoing investigations into the engineering requirements have resulted in the need for increased optionality for locating temporary and permanent AI outside the Solar Precinct boundary.



Fact sheet

Electrodes

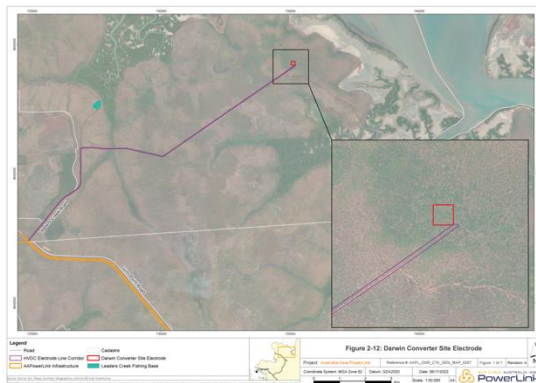
Electrode site areas of interest have reduced in size to 2-hectares. The High Voltage Direct Current (HVDC) Electrode Line connecting the electrodes to the OHTL have been designed further. The design now specifies a corridor 30 metres wide, containing an access road, and 12-metre-high pole structures.

Did you know?

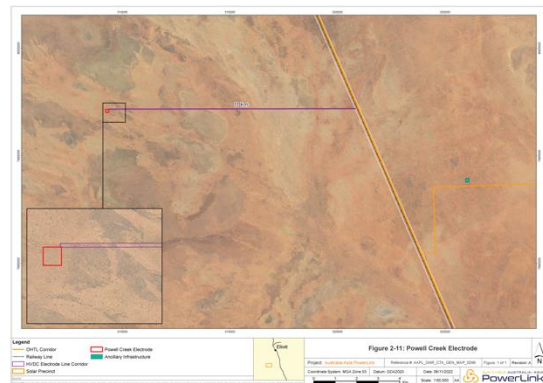


An electrode is a metal rod in the ground connected to the OHTL. It is used to prevent power surges and blackouts. It provides a safe earth path for electrical current. This is the same technology used in every house to ground electricity.

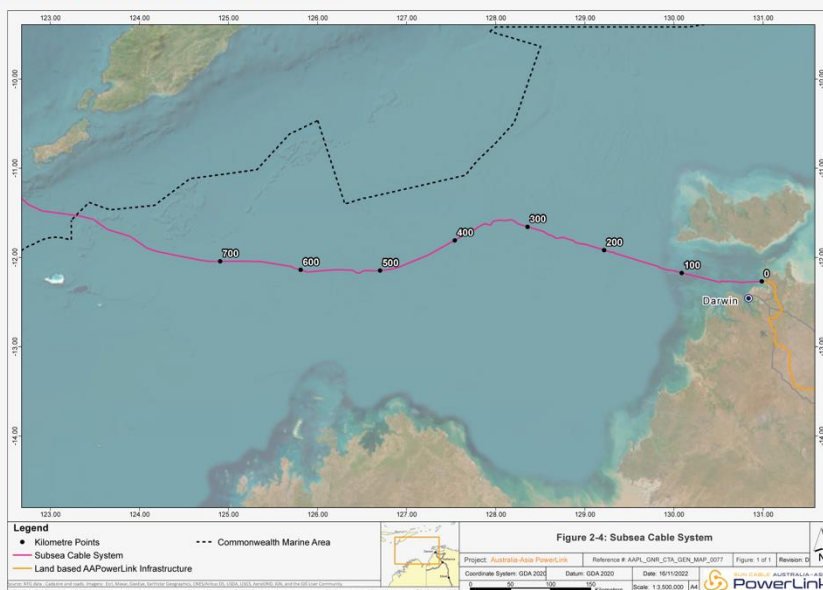
Darwin Converter Electrode Site



Powell Creek Electrode Site



Subsea Cable Route



The Draft EIS proposed two Subsea Cable route options for consideration.

Informed by further investigations, the SEIS identified the southern route as being preferred.

Minor realignment to the southern route posed in the draft EIS enables increased spacing of bends where the cable system will cross existing infrastructure.

Fact sheet

SUN CABLE AUSTRALIA-ASIA
PowerLink

Frequently Asked Questions

How is Sun Cable working with Aboriginal Custodians and Traditional Owners?

The SEIS provides details on Sun Cable's Aboriginal Regional Legacy Strategy. This strategy guides improved social outcomes, sustainable growth and generational benefits for Aboriginal and Torres Strait Islander people and communities. Sun Cable has, and continues to, engage with Traditional Owners through the Land Councils to negotiate mutually beneficial agreements, and discuss Indigenous engagement initiatives that are right for their communities.

How can businesses get involved in AAPowerLink?

Sun Cable is working with ICN NT to publish contracting and procurement opportunities to ICN Gateway. Expressions of interest can be submitted to: aapowerlink.icn.org.au

When does Front-End Engineering Design (FEED) commence?

AAPowerLink is in the final stages of Pre-FEED. The teams are in preparation for FEED activities now with FEED anticipated to commence in 2023.

Why are the powerlines above ground?

Overhead transmission will reduce the disturbance footprint for construction and maintenance, increase safety, allow flexibility in route selection through the ability to span sensitive receptors like water courses, habitats, and sacred sites, enable the infrastructure to coexist with other infrastructure and free land underneath the lines for alternative uses.

What environmental and social/cultural studies have been done for the project so far?

Several studies and activities were conducted to inform the SEIS. These include threatened species assessments, vegetation studies, groundwater assessments, seagrass and coral surveys, landscape and visual amenity assessments, cultural heritage surveys, sacred site surveys, construction and operations impact assessments and a stakeholder consultation campaign which includes Traditional Owner and remote community engagement.

What is Sun Cable doing to avoid adding pressure to the housing market during construction?

In the SEIS, Sun Cable committed to build Temporary Construction Accommodation at the Powell Creek Solar Precinct. This will mitigate pressure to the housing market. The Temporary Construction Accommodation will include a wet mess, health services, recreation, office, and accommodation facilities to minimise any negative impact on the surrounding communities and enhance workforce attraction and retention.



How can I stay updated?

Visit Sun Cable's website:

www.sunable.energy

Contact us at info.nt@suncable.energy



suncable

Darwin

Level 17
Charles Darwin Centre
19 Smith Steet
Darwin NT 0800
Australia

Sydney

Level 31
85 Castlereagh Street
Sydney NSW 2000
Australia

Melbourne

Level 34
2 Southbank Boulevard
Southbank VIC 3006
Australia

Brisbane

Level 3
900 Ann Street
Fortitude Valley QLD 4006
Australia

Indonesia

Equity Tower
33rd Floor SCBD
Jalan Jendral Sudirman
Kav. 52-53
South Jakarta 12190
Indonesia

Singapore

61 Robinson Road
#09-04
Singapore 068893