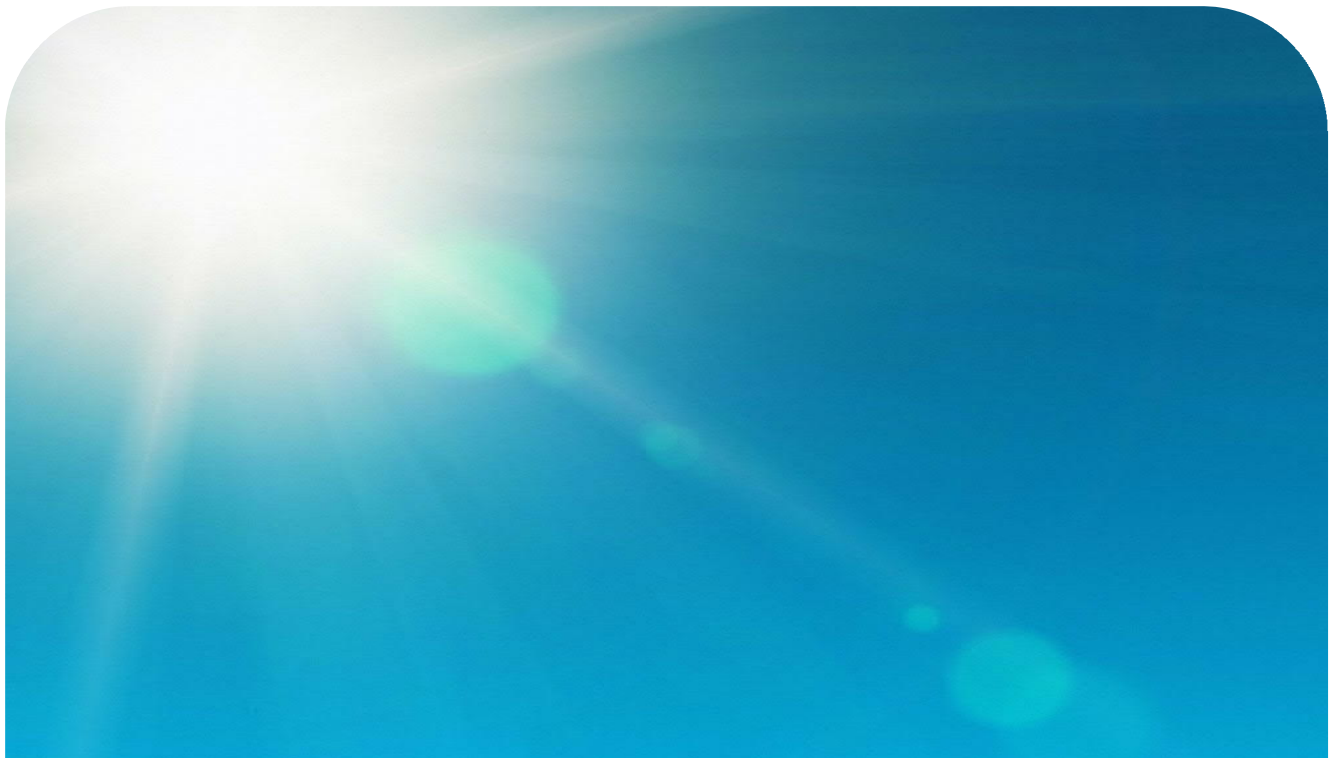


Chapter 13 – Culture and Heritage

AAP01-000-GEG-GGEN-00002

Approved Rev	Approver Position	Signature	Date
00	Mark Branson Chief Development Officer		22 Nov 2022
	Jonathan Kent Program Development Manager		22 Nov 2022



Document revision history and tracking

Document Preparation

Rev	Status	Date	Prepared by	Position	Reviewed by	Position
A	For Review	08 Nov 2022	Meriel Corbett-Weir	Manager Remote & Indigenous Services North Australia	Cassandra Buckley	Delivery Social Performance and Communications Specialist
					Damien Mick	Indigenous Engagement Officer
					Joe Sheridan	Development Manager
B	For Approval	15 Nov 2022	Meriel Corbett-Weir	Manager Remote & Indigenous Services North Australia	Meriel Corbett-Weir	Manager Remote & Indigenous Services North Australia
			Emily Osborn	Environmental Engineer	Stefan Hladenki,	Head of Territory Affairs
					Joe Sheridan	Development Manager
00	For Use	21 Nov 2022	Meriel Corbett-Weir	Manager Remote & Indigenous Services North Australia	Mark Branson	Chief Development Officer
			Emily Osborn	Environmental Engineer	Jonathan Kent	Program Development Manager

Revision history tracking record (Use after Rev 00)

Rev	Date	Description	Prepared by	Approved by

Contents

13	Culture and Heritage	13-1
13.1	Introduction.....	13-1
13.2	Information Sources.....	13-1
13.2.1	Desktop Cultural Heritage Survey and Field Surveys.....	13-2
13.3	Project Amendments since Draft EIS.....	13-12
13.4	Existing Environment and Cultural Value.....	13-12
13.4.1	Powell Creek Solar Precinct and AI.....	13-12
13.4.2	OHTL Corridor.....	13-13
13.4.2.1	Declared Heritage Places (NT).....	13-13
13.4.2.2	Archaeological and Heritage Sites.....	13-14
13.4.2.3	Aboriginal Sacred Sites.....	13-15
13.4.3	DCS Electrode and Powell Creek Electrode.....	13-15
13.4.4	DCS and Cable Transition Facilities.....	13-26
13.4.5	Subsea Cable System.....	13-26
13.4.6	Potential Impacts.....	13-26
13.4.7	Areas of Potential Impact (Direct and Indirect).....	13-26
13.4.8	Direct impact to heritage features.....	13-26
13.4.9	Indirect Impact to Heritage Features.....	13-27
13.4.10	Direct or indirect impact to unrecorded heritage features.....	13-28
13.5	Avoidance, Mitigation and Monitoring.....	13-28
13.5.1	Cultural Heritage Management Plan.....	13-30
13.5.1.1	Scope.....	13-30
13.5.1.2	Primary Objectives.....	13-30
13.5.1.3	NLC and AAPA Participation.....	13-31
13.5.2	Discovery of Unexpected Archaeological or Heritage Finds Process.....	13-31
13.5.3	Discovery of Human Remains Process.....	13-33
13.6	Residual Impact.....	13-35
13.7	Cumulative Impact Assessment.....	13-38
13.8	Conclusion.....	13-38
13.9	Submission Response.....	13-38
13.9.1	DCCEEW Submission.....	13-39
13.9.1.1	HIA Documentation.....	13-39
13.9.1.2	Response.....	13-39
13.9.2	Vibration Impacts.....	13-39
13.9.2.1	Response.....	13-39
13.9.3	DCCEEW Submission.....	13-40
13.9.3.1	OHTL Effects at Black Jungle.....	13-40
13.9.3.2	Response.....	13-40
13.9.4	Heritage Branch Submission.....	13-40
13.9.4.1	Ongoing Consultation.....	13-40
13.9.4.2	Response.....	13-40
13.9.4.3	Cultural Heritage Risk Areas.....	13-40
13.9.4.4	Response.....	13-41
13.9.4.5	Marine Heritage Surveys.....	13-41
13.9.4.6	Response.....	13-41
13.9.5	AAPA Submission.....	13-42
13.9.5.1	New Areas Subject to Authority Certificates.....	13-42
13.9.5.2	Response.....	13-42
13.9.5.3	Authority Certificate Applications.....	13-42
13.9.5.4	Response.....	13-42
13.9.6	ECNT Submission.....	13-43
13.9.6.1	Lake Woods.....	13-43

13.9.6.2 Response	13-43
13.10 NT EPA Direction Responses	13-43
13.10.1 Heritage Impacts – Comment 38.....	13-43
13.10.2 Information Required in the Supplement.....	13-43
13.10.3 Response	13-44

Tables

Table 13-1: Cultural Heritage Surveys	13-2
Table 13-2: Declared heritage places (NT) proximate to, or within, the OHTL Corridor	13-13
Table 13-3: NT Archaeological Database Sites of high significance proximate to, or within, the OHTL Corridor	13-14
Table 13-4: Heritage features potentially directly impacted by the Project.....	13-27
Table 13-5: Culture and Heritage - Commitments	13-29
Table 13-6: Summary of EIA results – Culture and heritage factor – Construction	13-36
Table 13-7: Summary of EIA results – Culture and heritage factor – Operations.....	13-37

Figures

Figure 13-1: Desktop Cultural Heritage Database Area.....	13-4
Figure 13-2: Desktop Cultural Heritage Database Overview	13-5
Figure 13-3: OHTL Corridor Cultural Heritage Field Survey Areas KP 0 to KP 61	13-6
Figure 13-4: OHTL Corridor Cultural Heritage Field Survey Areas KP 62 to KP 140.....	13-7
Figure 13-5: OHTL Corridor Cultural Heritage Field Survey Areas KP 140 to 221.....	13-8
Figure 13-6: OHTL Corridor Cultural Heritage Field Survey Areas KP 190 to KP 273	13-9
Figure 13-7: OHTL Corridor Cultural Heritage Field Survey Areas KP 263 to KP 345.....	13-10
Figure 13-8: OHTL Corridor Cultural Heritage Field Survey Areas KP 346 to KP 448.....	13-11
Figure 13-9: Heritage features recorded in the Desktop Cultural Heritage Database – Map 1 of 9	13-17
Figure 13-10: Heritage features recorded in the Desktop Cultural Heritage Database – Map 2 of 9	13-18
Figure 13-11: Heritage features recorded in the Desktop Cultural Heritage Database – Map 3 of 9	13-19
Figure 13-12: Heritage features recorded in the Desktop Cultural Heritage Database – Map 4 of 9	13-20
Figure 13-13: Heritage features recorded in the Desktop Cultural Heritage Database – Map 5 of 9	13-21
Figure 13-14: Heritage features recorded in the Desktop Cultural Heritage Database – Map 6 of 9	13-22
Figure 13-15: Heritage features recorded in the Desktop Cultural Heritage Database – Map 7 of 9	13-23
Figure 13-16: Heritage features recorded in the Desktop Cultural Heritage Database – Map 8 of 9	13-24
Figure 13-17: Heritage features recorded in the Desktop Cultural Heritage Database – Map 9 of 9	13-25
Figure 13-18: Discovery of Unexpected Archaeological or Heritage Finds Flowchart.....	13-32
Figure 13-19: Discovery of Human Skeletal Remains Flowchart.....	13-34

13 Culture and Heritage

13.1 Introduction

The NT EPA's objective for the Culture and heritage factor is to:

Protect sacred sites, culture, and heritage.

The potential impacts to culture and heritage addressed in this chapter were identified with reference to the EIS TOR issued by the NT EPA, issues raised by TOs and their representatives and professional judgement of the SEIS team (Appendix 1.5) based on their knowledge and understanding of the Project's components and activities described in Chapter 2 of the Draft EIS and Chapter 2 of the SEIS Project Refinement.

This chapter presents the findings of the EIA process undertaken for the culture and heritage factor. This chapter responds to findings on sites/places/objects of cultural and/or heritage significance of shared values.

Within this chapter and throughout the SEIS, where reference is made to TOs, it may include TOs, Native Title Holders, Custodians, or their representatives.

Traditional Owner, in relation to a person or group of people, means:

- *A common law holder where an area is subject to a determination of native title, and otherwise a native title holder as defined in Section 224 of the Native Title Act 1993 (Cwth)*
- *A traditional Aboriginal owner as defined in Section 3 of the Aboriginal Land Rights (NT) Act 1976 (Cwth)*
- *A custodian of a Sacred Site or Sacred Object as defined in the NT Aboriginal Sacred Sites Act 1989.*

13.2 Information Sources

Since the Draft EIS was lodged, additional field surveys have been undertaken which relate to culture and heritage. The Proponent's heritage consultant, Earthsea, developed a Desktop Cultural Heritage Survey to inform field surveys of the OHTL Corridor from KP 0 to KP 722 and of the Powell Creek Electrode and DCS Electrode footprints.

In August 2022, culture and heritage surveys in the OHTL Corridor from KP 0 at the Solar Precinct to approximately KP 368 at Lakefield Pastoral Lease south of Katherine were completed. Sacred Site field surveys were also completed in collaboration with AAPA to inform the AAPA certificate application during the same campaign. The survey methodology employed by Earthsea was consistent with the approach conveyed in the Draft EIS and assisted by Cultural Managers. The Proponent has additionally engaged a full time Indigenous Engagement Officer to manage culturally safe, respectful and responsive processes across the Project.

The following documentation has additionally been developed that relates to cultural heritage:

- Constraints Planning and Field Development Procedure (Appendix 4.1)
- Stakeholder Consultation Report (Appendix 3.1)
- SIMP (Appendix 3.2)
- Desktop Cultural Heritage Survey (Appendix 13.1).

Field surveys from KP 368 to KP 722 are ongoing with support of AAPA, NLC and Cultural Managers. Once complete an updated and consolidated HIA Report will be provided to the NT EPA and the NTG’s Heritage Branch for assessment in early 2023. The report and its recommendations will be used to refine the Constraints Planning and Field Development Procedure at Appendix 4.1. It will also serve as the foundation upon which a CHMP framework will be developed to inform site specific CHMPs for sites across the project footprint.

Earthsea will also complete an addendum to the HIA at Appendix X of the Draft EIS report which considers the Subsea Cable System survey area surveyed in October 2022 by Guardian Geomatics (see Chapters 2, 7 and 8 for more detail on the Subsea Cable System Route). This addendum will also be provided to the NT EPA and NTG’s Heritage Branch for consideration.

The Proponent will continue to work with AAPA to conclude the remaining field surveys and ensure NTG’s Heritage branch is provided the HIA reports once they become available.

13.2.1 Desktop Cultural Heritage Survey and Field Surveys

The Desktop Cultural Heritage Survey provided in Appendix 13.1 considers the Electrode sites and the OHTL Corridor up to KP 722, inclusive of a 100 m buffer around the corridor (Figure 13-1). Figure 13-3 to Figure 13-8 depicts the planned survey area up to KP 450. As noted in Section 13.2, the survey effort concluded at KP 368 with the remaining OHTL Corridor to be surveyed in the first half of 2023.

Chapter 14 of the Draft EIS summarised the Cultural HIA Reports, including the surveys completed. Table 13-1 outlines the respective cultural heritage survey for each project component.

Table 13-1: Cultural Heritage Surveys

Component	Draft EIS	SEIS
Solar Precinct and AI	HIA – Solar Precinct (Appendix V).	Consistent with Draft EIS.
OHTL Corridor	HIA – OHTL KP 1722 to Murrumujuk (Appendix W-1 and W-2).	Desktop Cultural Heritage Survey compiled – OHTL KP 0 to KP 722 (Appendix 13.1). Cultural Heritage Field Survey – KP 0 to KP 368.
Electrodes	Not provided.	Desktop Cultural Heritage Survey compiled (Appendix 13.1).
DCS and Cable Transition Facilities	HIA – OHTL KP 722 to Murrumujuk (Appendix W).	Consistent with Draft EIS.
Subsea Cable System	HIA – Subsea Cable System (Appendix X).	Consistent with Draft EIS. Addendum to Appendix X of Draft EIS to be provided.

Comprehensive studies were undertaken to support the Draft EIS and the Proponent’s consultants conducted similar surveys (desktop and actual) for the SEIS. As noted above, due to unforeseen circumstances the survey report and corresponding HIAs were unable to be provided as part of the SEIS submission. The Proponent is confident that significant data is provided and that all laws and provisions have been observed to protect cultural values.

¹ 1 KP = Kilometre point, and represents kilometres along the OHTL, with 0 at the Solar Precinct and the end (~788) at the DCS at Murrumujuk.

Furthermore, the Proponent is actively engaged with APAA to support the AAPA Certificate process and co-ordinate the required filed surveys. Twelve AAPA Certificate applications have been lodged and the Proponent will continue to work with AAPA to support the assessment of these applications.

Significance assessments were undertaken on each recorded site in the Desktop Cultural Heritage Survey and refined the field survey effort in the OHTL Corridor. Significance assessments were conducted in accordance with the accepted guidelines and principles referenced in Section 14.3.3.3 of the Draft EIS. Significance ratings (low, medium, high) were provided for archaeological and cultural significance.

The Desktop Cultural Heritage Survey accessed a range of information and knowledge sources to identify and assess sites of significance, including:

- NT Heritage Register Database
- NT Archaeological Site Database
- Aboriginal Sacred Sites Register (NT)
- National Heritage Database (Cwth)
- Cwth Heritage List
- Native Title Register
- Published literature pertaining to the ethnographic, archaeological, and historic background of the areas of interest and heritage studies
- Unpublished industry consulting reports pertaining to cultural heritage and archaeological assessments previously undertaken within, or proximate to, the areas of interest or within comparable land systems.

The Desktop Cultural Heritage Survey appended is a public version that does not contain exact location details of any known Sacred Sites. These details are kept confidential to avoid inadvertent impacts to sites from unauthorised public access. The Proponent will use the information collated in the confidential versions of the Draft EIS HIA Reports for the express purpose of ensuring the project is designed, constructed, and operated in a manner that minimises impacts to sites of significance and there are no unacceptable impacts to cultural or heritage values.



Legend

- Kilometre Points
- AAPowerLink Infrastructure
- Powell Creek Station
- Roads
- Existing Railway Line
- OHTL Heritage Survey Area (100m from OHTL Corridor)

Source: NTG data - Parks and reserves, Australian Government data - Railway, roads, coastal waters and marine parks

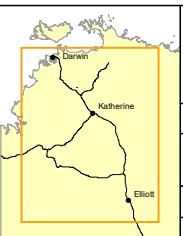


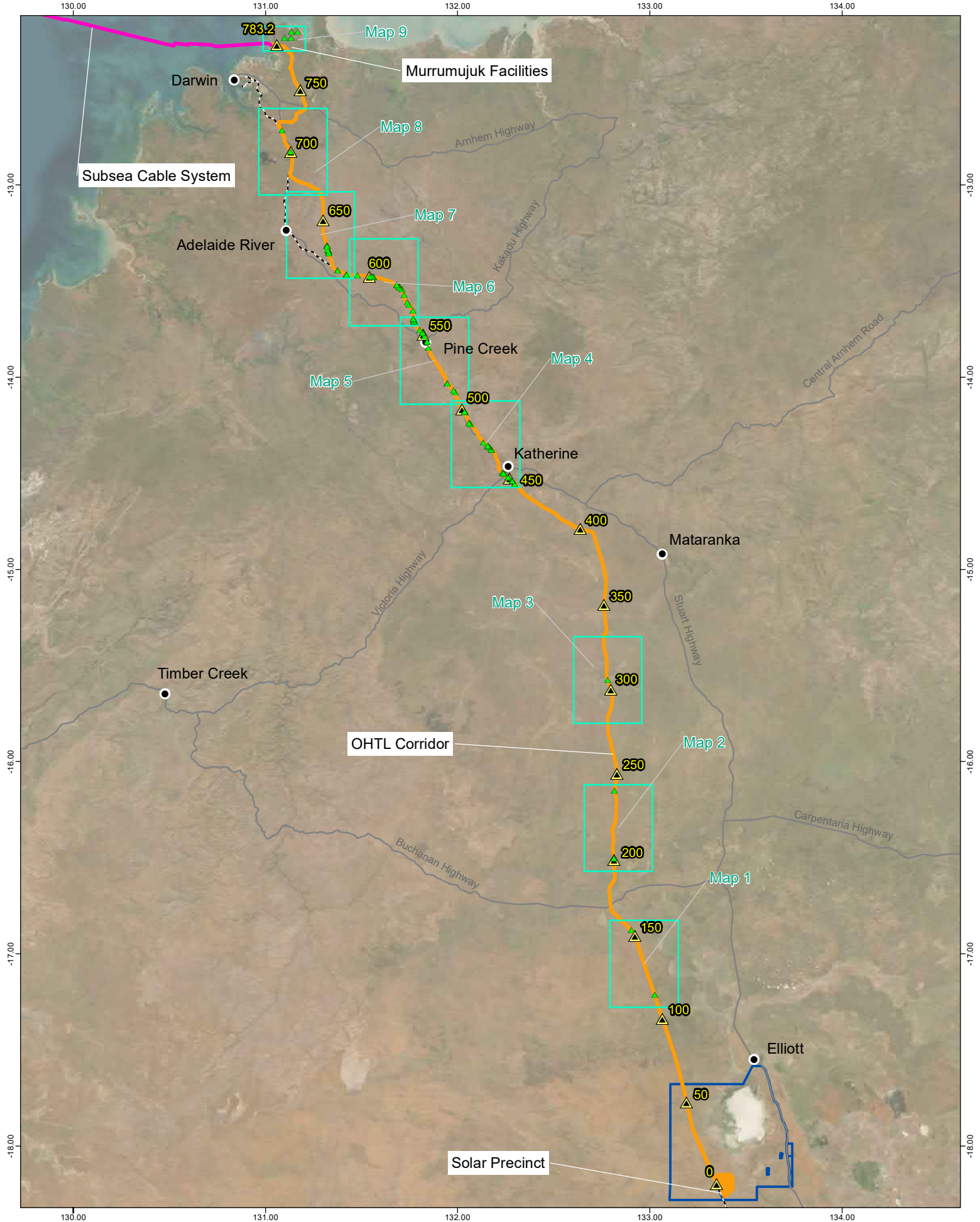
Figure 13-1: Desktop Cultural Heritage Database Area

Project: **Australia-Asia PowerLink**

0 25 50 75 100 Kilometres	Reference #: AAPL_GNR_CTA_GEN_MAP_0438
Scale: 1:2,750,000	Date: 18/11/2022
Datum: GDA2020	Figure: 1 of 1
Coordinate System: GDA2020	Revision: A

SUN CABLE AUSTRALIA-ASIA PowerLink

DISCLAIMER: Sun Cable Pty Ltd disclaims all liability for all claims, expenses, losses, damages, and costs any person/company may incur as a result of their /its reliance on the accuracy or completeness of this document or its capability to achieve any purpose. © Sun Cable Pty Ltd 2022.



Legend

- Kilometre Points
- AAPowerLink Infrastructure
- Powell Creek Station
- Roads
- Existing Railway Line
- Map Index
- Subsea Cable System
- Heritage Features (Earth Sea, 20221115)

Source: NTG data - Parks and reserves, Australian Government data - Railway, roads, coastal waters and marine parks



Figure 13-2: Desktop Cultural Heritage Database - Overview

Project: **Australia-Asia PowerLink**

0 25 50 75 100 Kilometres		Reference #: AAPL_GNR_CTA_GEN_MAP_0439
Scale: 1:2,750,000	Datum: GDA2020	Date: 18/11/2022 Figure: 1 of 1 Revision: A
Coordinate System: GDA2020	A4	

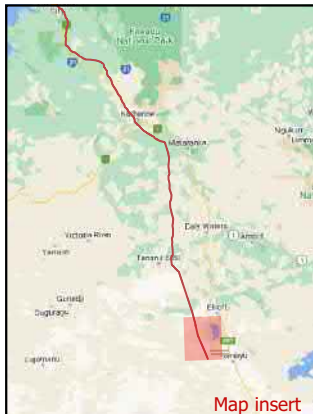
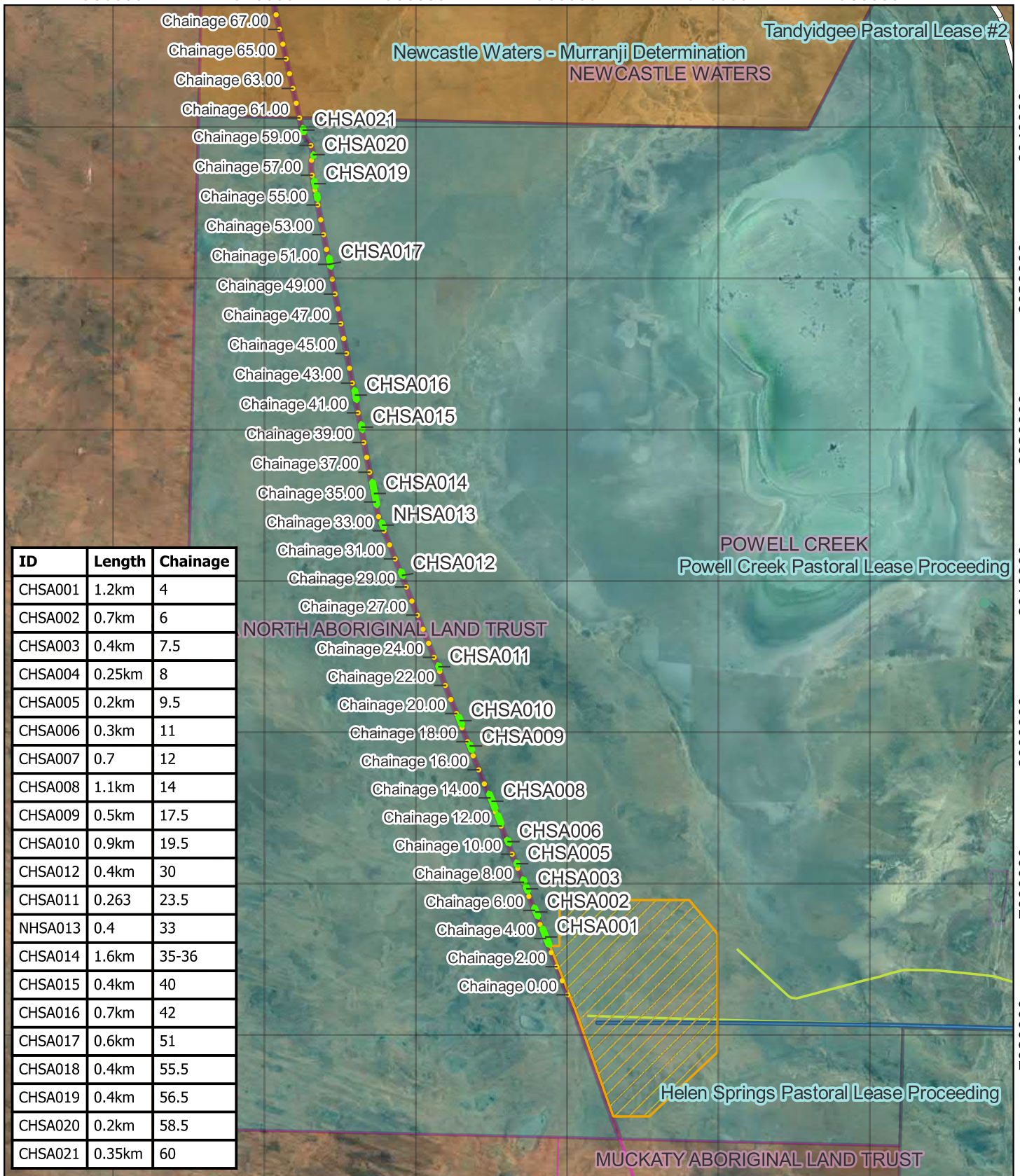
DISCLAIMER: Sun Cable Pty Ltd disclaims all liability for all claims, expenses, losses, damages, and costs any person/company may incur as a result of their /its reliance on the accuracy or completeness of this document or its capability to achieve any purpose. © Sun Cable Pty Ltd 2022.

930000 940000 950000 960000 970000 980000

8040000
8030000
8020000
8010000
8000000
7990000
7980000



8040000
8030000
8020000
8010000
8000000
7990000
7980000

ID	Length	Chainage
CHSA001	1.2km	4
CHSA002	0.7km	6
CHSA003	0.4km	7.5
CHSA004	0.25km	8
CHSA005	0.2km	9.5
CHSA006	0.3km	11
CHSA007	0.7	12
CHSA008	1.1km	14
CHSA009	0.5km	17.5
CHSA010	0.9km	19.5
CHSA012	0.4km	30
CHSA011	0.263	23.5
NHSA013	0.4	33
CHSA014	1.6km	35-36
CHSA015	0.4km	40
CHSA016	0.7km	42
CHSA017	0.6km	51
CHSA018	0.4km	55.5
CHSA019	0.4km	56.5
CHSA020	0.2km	58.5
CHSA021	0.35km	60



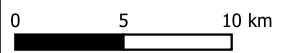
AAPowerLink OHTL Corridor: Cultural Heritage Survey Areas Chainage 0 to 61

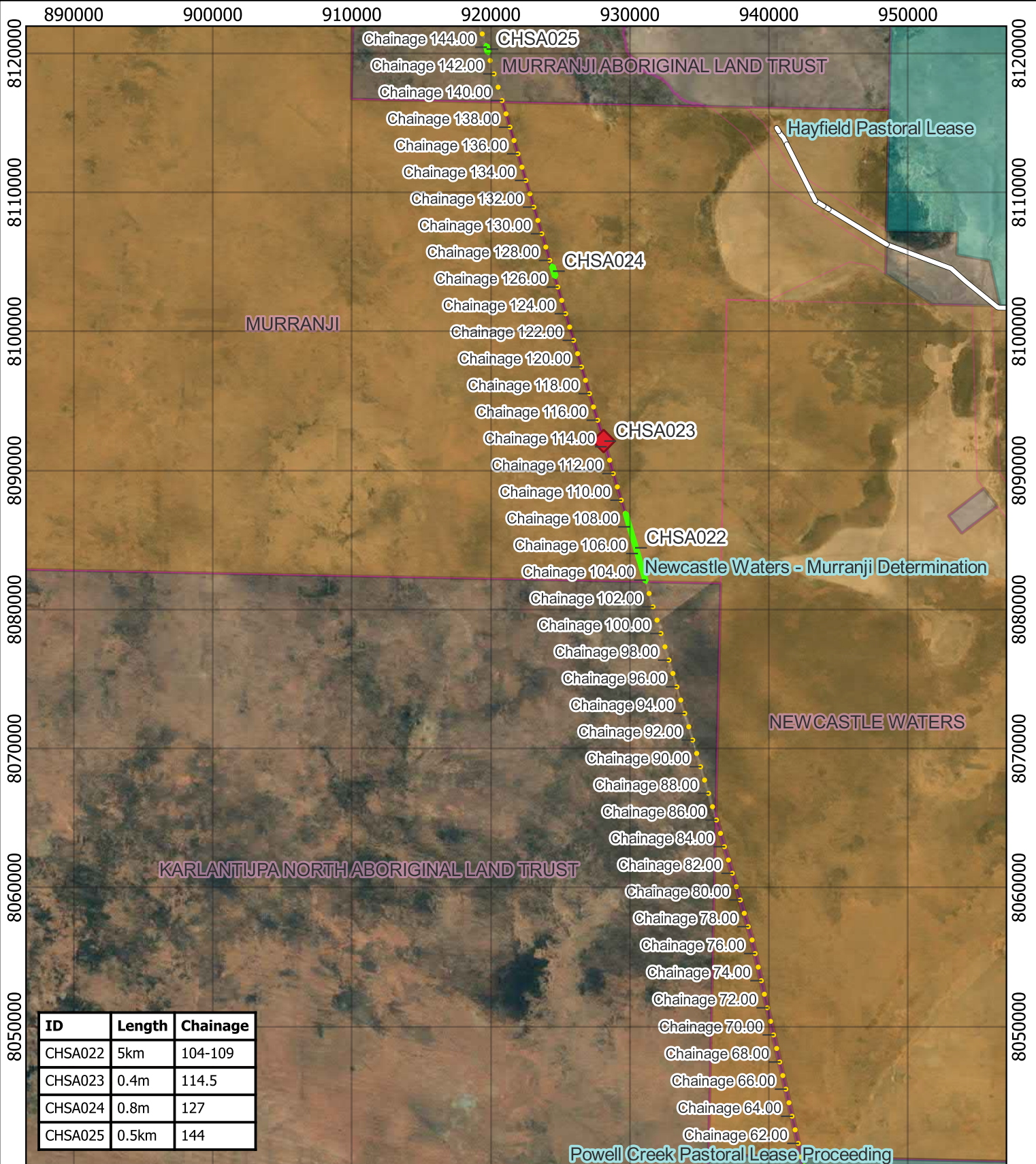
Legend

-  AAPowerLink OHTL
-  Cultural Heritage Survey Areas (CHSA)
-  NTG Archaeological Database
-  NTG Declared Heritage Places
-  AAPowerLink OHTL Chainage Points
-  AAPowerLink Solar Precinct

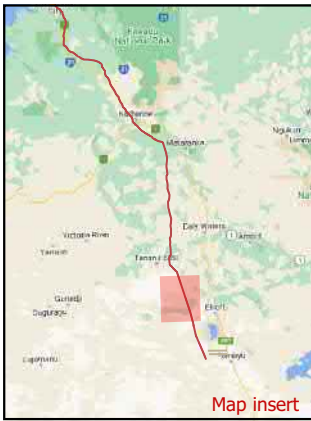
Map Information

Scale: 1:350,000 (@A4)
 UTM: GDA2020, Zone 53
 Mapping: Ben Keys
 Base Map: Esri
 Date: 10/05/2022





ID	Length	Chainage
CHSA022	5km	104-109
CHSA023	0.4m	114.5
CHSA024	0.8m	127
CHSA025	0.5km	144



AAPowerLink OHTL Corridor: Cultural Heritage Survey Areas Chainage 62 to 140

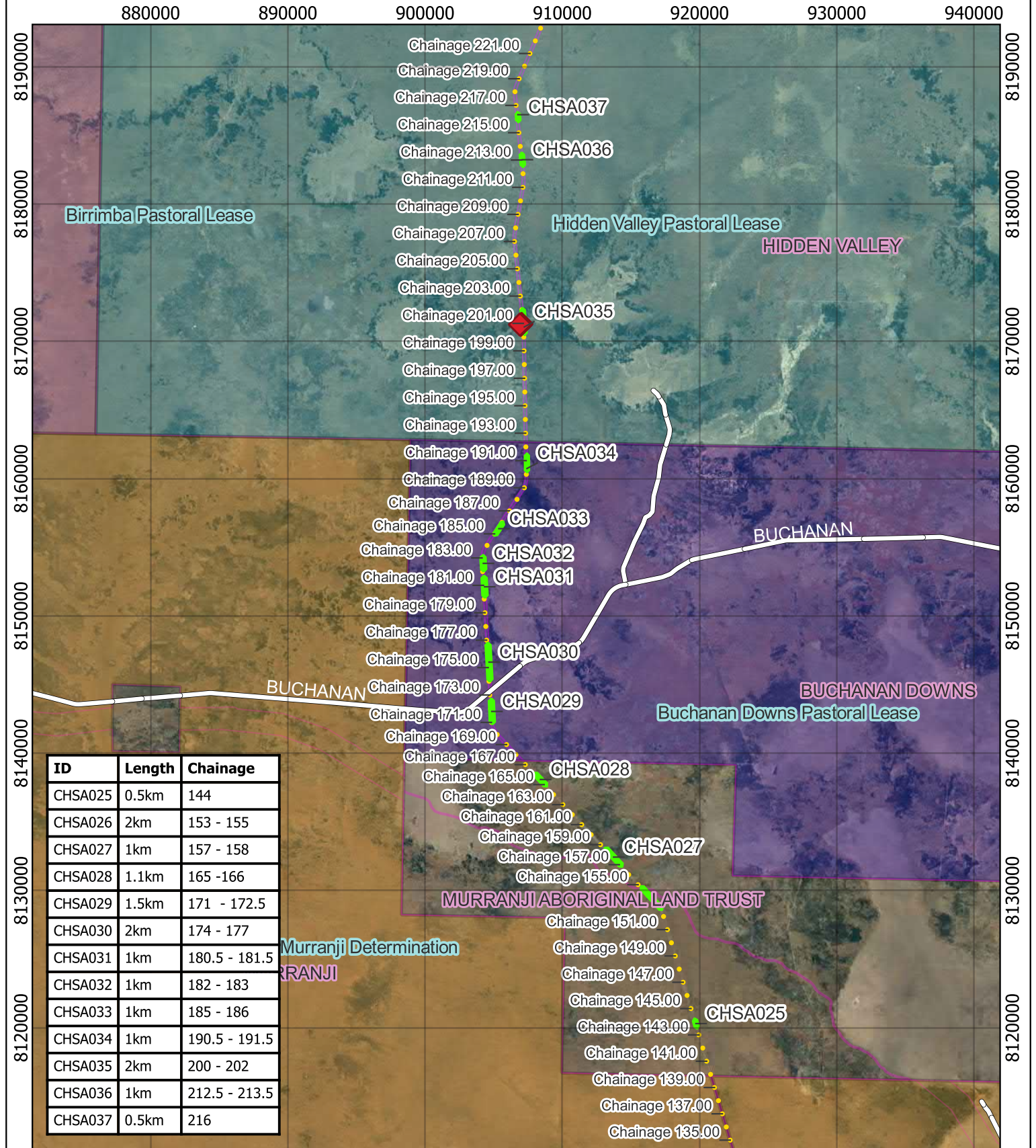
Legend

- AAPowerLink OHTL
- Cultural Heritage Survey Areas (CHSA)
- ◆ NTG Archaeological Database
- ◆ NTG Declared Heritage Places
- AAPowerLink OHTL Chainage Points
- AAPowerLink Solar Precinct
- NT Gov Controlled Roads

Map Information

Scale: 1:370,000 (@A4)
 UTM: GDA2020, Zone 53
 Mapping: Ben Keys
 Base Map: Esri
 Date: 10/05/2022

0 5 10 km



AAPowerLink OHTL Corridor: Cultural Heritage Survey Areas Chainage 140 to 221

Legend

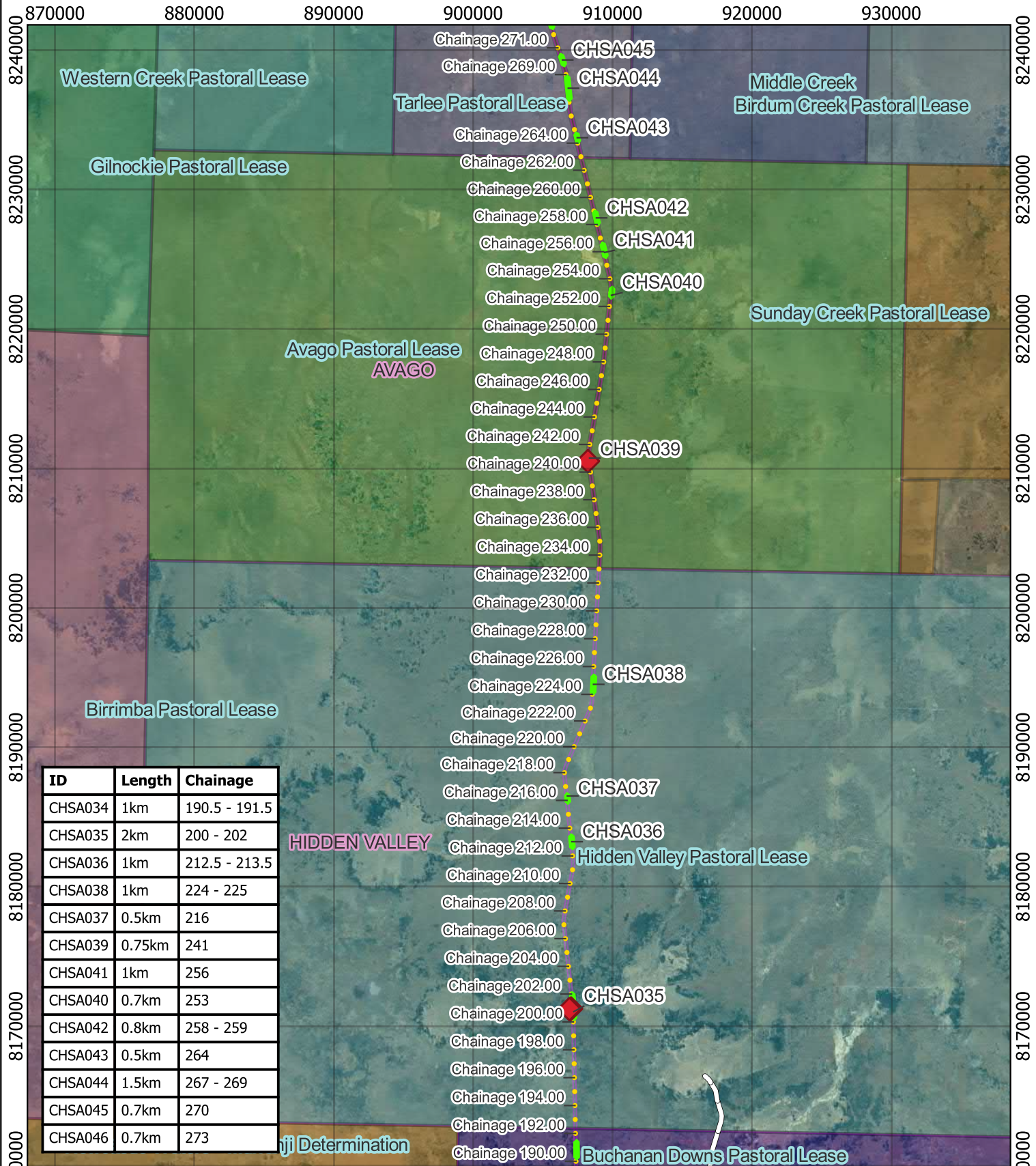
- AAPowerLink OHTL
- Cultural Heritage Survey Areas (CHSA)
- NTG Archaeological Database
- NTG Declared Heritage Places

- AAPowerLink OHTL Chainage Points
- AAPowerLink Solar Precinct
- NT Gov Controlled Roads

Map Information

Scale: 1:370,000 (@A4)
 UTM: GDA2020, Zone 53
 Mapping: Ben Keys
 Base Map: Esri
 Date: 10/05/2022

0 5 10 km



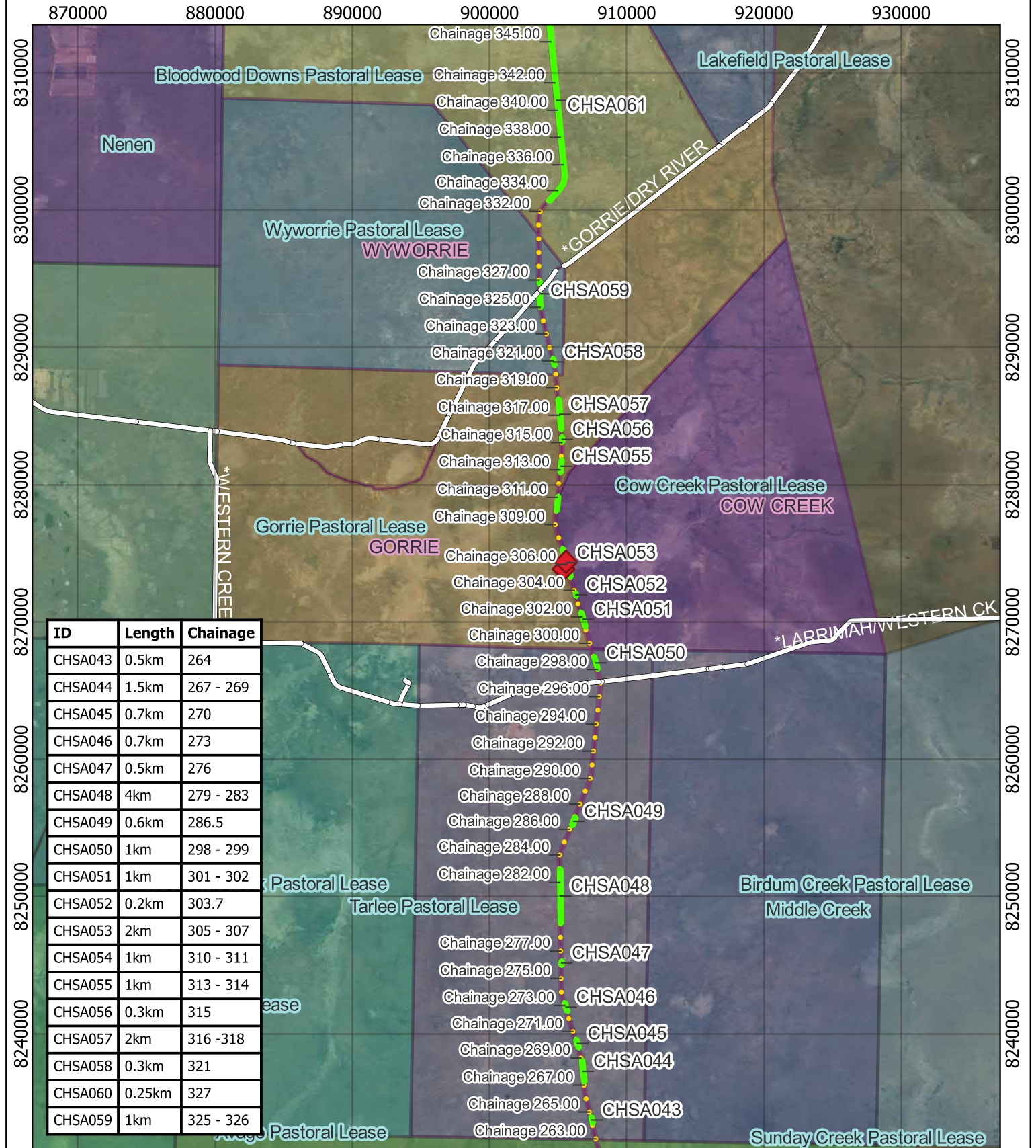
AAPA OHTL Corridor: Cultural Heritage Survey Areas Chainage 190 to 273

<p>Legend</p> <ul style="list-style-type: none"> AAPowerLink OHTL NTG Archaeological Database NTG Declared Heritage Places 	<ul style="list-style-type: none"> AAPowerLink Solar Precinct NT Gov Controlled Roads
---	--

Map Information

Scale: 1:370,000 (@A4)
 UTM: GDA2020, Zone 53
 Mapping: Ben Keys
 Base Map: Esri
 Date: 10/05/2022

0 5 10 km



ID	Length	Chainage
CHSA043	0.5km	264
CHSA044	1.5km	267 - 269
CHSA045	0.7km	270
CHSA046	0.7km	273
CHSA047	0.5km	276
CHSA048	4km	279 - 283
CHSA049	0.6km	286.5
CHSA050	1km	298 - 299
CHSA051	1km	301 - 302
CHSA052	0.2km	303.7
CHSA053	2km	305 - 307
CHSA054	1km	310 - 311
CHSA055	1km	313 - 314
CHSA056	0.3km	315
CHSA057	2km	316 - 318
CHSA058	0.3km	321
CHSA060	0.25km	327
CHSA059	1km	325 - 326



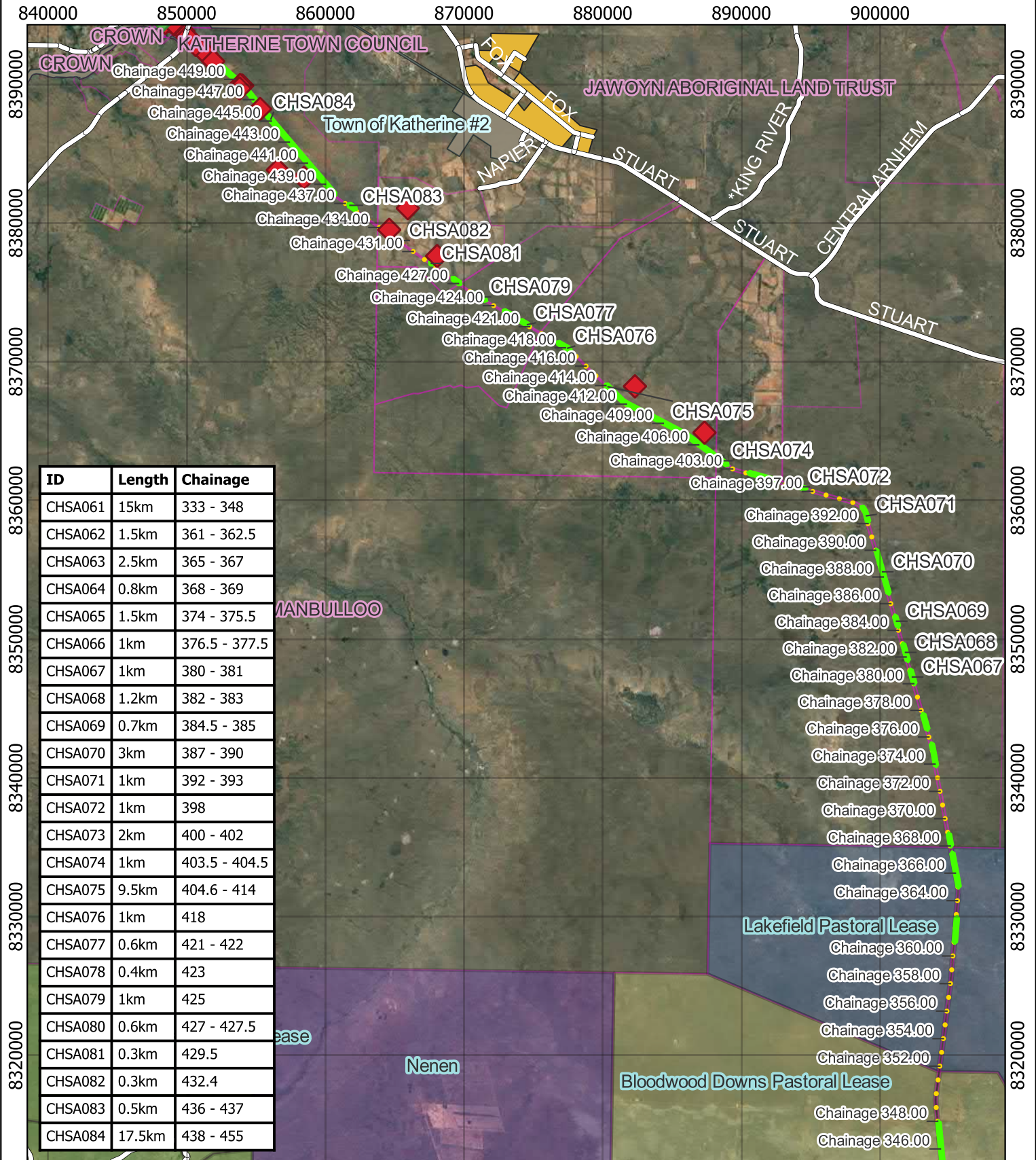
AAPA OHTL Corridor: Cultural Heritage Survey Areas Chainage 263 to 345

- Legend**
- █ AAPowerLink OHTL
 - ◆ NTG Archaeological Database
 - ◆ NTG Declared Heritage Places
 - ▨ AAPowerLink Solar Precinct
 - AAPowerLink OHTL Chainage Points
 - NT Gov Controlled Roads

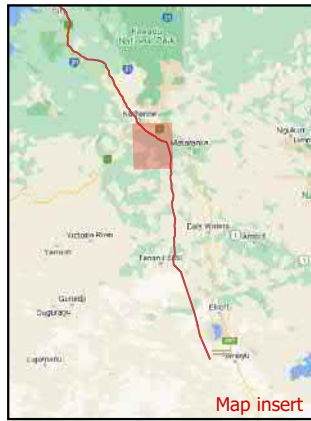
Map Information

Scale: 1:370,000 (@A4)
 UTM: GDA2020, Zone 53
 Mapping: Ben Keys
 Base Map: Esri
 Date: 10/05/2022

0 5 10 km



ID	Length	Chainage
CHSA061	15km	333 - 348
CHSA062	1.5km	361 - 362.5
CHSA063	2.5km	365 - 367
CHSA064	0.8km	368 - 369
CHSA065	1.5km	374 - 375.5
CHSA066	1km	376.5 - 377.5
CHSA067	1km	380 - 381
CHSA068	1.2km	382 - 383
CHSA069	0.7km	384.5 - 385
CHSA070	3km	387 - 390
CHSA071	1km	392 - 393
CHSA072	1km	398
CHSA073	2km	400 - 402
CHSA074	1km	403.5 - 404.5
CHSA075	9.5km	404.6 - 414
CHSA076	1km	418
CHSA077	0.6km	421 - 422
CHSA078	0.4km	423
CHSA079	1km	425
CHSA080	0.6km	427 - 427.5
CHSA081	0.3km	429.5
CHSA082	0.3km	432.4
CHSA083	0.5km	436 - 437
CHSA084	17.5km	438 - 455



AAPowerLink OHTL Corridor: Cultural Heritage Survey Areas Chainage 346 to 448

Legend

- AAPowerLink OHTL
- Cultural Heritage Survey Areas (CHSA)
- NTG Archaeological Database
- NTG Declared Heritage Places

- AAPowerLink OHTL Chainage Points
- AAPowerLink Solar Precinct
- NT Gov Controlled Roads

Map Information

Scale: 1:370,000 (@A4)
 UTM: GDA2020, Zone 53
 Mapping: Ben Keys
 Base Map: Esri
 Date: 10/05/2022

0 5 10 km

13.3 Project Amendments since Draft EIS

Project refinements presented in Chapter 2 of the SEIS which have been assessed in this section for their potential to impact cultural heritage include:

- Powell Creek Solar Precinct and AI
- Preferred OHTL Corridor
- DCS Electrode and Powell Creek Electrode
- Subsea Cable System Route selected (Route B from Draft EIS).

13.4 Existing Environment and Cultural Value

Chapter 14 of the Draft EIS details the cultural and heritage context, values, and features for each project component. Cultural or heritage features includes Aboriginal Sacred Sites, Aboriginal archaeological places and objects, historic heritage features and culturally significant landscape features. Further discussion is provided throughout this section where warranted by project refinements or where additional information has become available since the Draft EIS lodgement.

The Project traverses the traditional lands of many Aboriginal groups. Ongoing consultation with Aboriginal people will help establish the agreements needed for the Project to proceed and inform project planning and operations. There is evidence of traditional use of the land by Aboriginal people across the Project's footprint, in the form of Aboriginal archaeological sites and objects, and details of these have been previously provided in Section 14.3 of the Draft EIS.

The Proponent's consultation forums, summarised in Table 3-7 of the Draft EIS, reveal that TOs are interested in the OHTL Corridor and Electrode construction and understanding any potential interactions with nearby infrastructure, communities and assets. Opportunities for TOs to contribute to the Project were also recorded - for instance there are four different ranger groups in the northern section of the OHTL Corridor that could potentially contribute to the workforce. There is anticipation for the development of an NLC Ranger program in Elliott and a comment that the Elliott Rangers could potentially assist with weed management at the Powell Creek Solar Precinct.

13.4.1 Powell Creek Solar Precinct and AI

The HIA of the Solar Precinct provided in Appendix V of the Draft EIS considers the Powell Creek Solar Precinct, Main Access Road, Gravel Access Road and AI. Though further consultation and investigation will occur as the delivery of the Project progresses, there are no material changes to the existing environment and cultural values as understood in the Draft EIS. Indicative AI locations were included in the AAPA field surveys conducted in post Draft EIS lodgement and have also been presented in meetings with TOs co-ordinated through the NLC. Final locations will consider any restricted work areas or conditions included in AAPA Sacred Site Authority Certificates and the agreement of the NLC on behalf of TOs as part of negotiating the generation site ILUA.

The Solar Precinct is approximately 10 km south south-west from Lake Woods, an area used for hunting and cultural purposes by TOs and Elliott residents (refer to Appendix 3.1). The Proponent will apply expert advice from Earthsea to address any concerns regarding cultural heritage and archaeological impacts through the preparation and implementation of a CHMP for the Solar Precinct and AI.

13.4.2 OHTL Corridor

The existing cultural heritage values as understood in Section 14.3 of the Draft EIS regarding the OHTL Corridor remain relevant. The Desktop Cultural Heritage Survey (Appendix 13.1) provides enhanced detail surrounding the cultural and heritage sites within the preferred OHTL Corridor footprint and surrounding area. Figure 13-2 to Figure 13-8 depict the areas surveyed up to approximately KP 368 along the OHTL Corridor.

Figure 13-9 to Figure 13-8 depict the cultural and heritage features the Desktop Cultural Heritage Survey noted within or proximate to the OHTL Corridor.

13.4.2.1 Declared Heritage Places (NT)

The NT Heritage Register contains details of all heritage places and objects declared under the *Heritage Act 2011* (NT). Section 14.3.4.1 of the Draft EIS outlines the declared heritage places proximate to, or within, the existing railway line. The Desktop Cultural Heritage Survey refines the proximity of these declared heritage places to the OHTL Corridor (Appendix 13.1). The declared heritage places are summarised in Table 13-2, all of which are of high significance.

Table 13-2: Declared heritage places (NT) proximate to, or within, the OHTL Corridor

Site Name	Site Type	Environment	Location	Approx. KP (km)	OHTL Corridor Proximity
Springvale Homestead Heritage Sites.	Historic Place.	On northern bank of Katherine River.	Site is located 200 m south of existing railway line.	455	Outside proposed OHTL Corridor. Site is located 220 m south.
Fergusson River Railway Bridge & Boiler.	NAR historic place.	Historic NAR Bridge remains crossing Elizabeth River.	Reused by existing railway line.	512	Outside of OHTL Corridor.
Burrundie Explosives Magazines.	Historic NAR building.	Within existing railway line.	The site is located 25 m southwest of existing railway line.	582	Outside of OHTL Corridor.
Grove Hill Hotel.	Historic building.	Building site.	Located 30m south of the existing railway line on the Mount Wells Road.	598	Outside of OHTL Corridor.
Brocks Creek Township, Railway Siding and Military Detention Barracks.	Historic building sites.	Adjacent to existing railway line.	The site is located 15 m north of the centre of the existing railway line and 10 m south.	614	Within OHTL Corridor.

13.4.2.2 Archaeological and Heritage Sites

The Desktop Cultural Heritage Survey identifies 54 archaeological and historic sites recorded in the NT Archaeological Site Database within the surveyed area. An additional 18 sites omitted from the database were noted in the Desktop Cultural Heritage Survey from previous industry surveys (ADrail, 2003). Table 13-3 summaries the sites of high significance within the OHTL Corridor or 100 m buffer area.

The archaeological and historic sites were largely recorded when the existing Railway Corridor was surveyed prior to completion in September 2003. Fourteen of the abovementioned archaeological features within the railway corridor were noted as salvaged or partially salvaged. However, it is acknowledged that salvaged stone artefact scatters may still have stone artefacts present if the depositional environment was not destroyed by the construction of the railway.

Table 13-3: NT Archaeological Database Sites of high significance proximate to, or within, the OHTL Corridor

Site Name	Site Type	Environment	Location	Approx. KP (km)	OHTL Corridor Proximity
Turpentine Paddock 1	Stone artefact scatter.	Around a sinkhole.	Within existing railway line, 50 m west of track.	115	Outside of OHTL Corridor.
Hidden Valley 1	Quarry/knapping floor.	On southern bank of creek.	Within existing railway line, 45 m west of track.	201	Outside of OHTL Corridor.
Manbulloo 2	Quarry.	Limestone and chert outcrop in amphitheatre shape.	Site is located on south-western boundary of existing railway line.	448	Outside of OHTL Corridor. Site is fenced 27 m south-west of existing railway line centre line.
Leight Creek 3	Quarry.	Gently undulating slopes.	Overlaps existing railway line, approx. 20 m west of track.	471	Within proposed OHTL Corridor. Fenced by rail 20 m south-west of existing railway line centre line.
Leight Creek 4	Quarry.	Gently undulating slopes.	Within existing railway line, 10 m west of track.	472	Within OHTL Corridor. Fenced by rail 10 m south-west of existing railway line centre line for 240 m.
Leight Creek 7	Rock shelter deposit, stone artefact scatter, grinding surface.	Around large quartz boulder on gentle slope.	Within existing railway line, 12 m south-west of track.	474	Within OHTL Corridor.
Edith River 4	Grinding groves.	Large granite outcrops within Edith Riverbed.	Potentially overlaps easting side of existing railway line. Outcrops located	498	Outside of OHTL Corridor.

Site Name	Site Type	Environment	Location	Approx. KP (km)	OHTL Corridor Proximity
			within 30 m of track.		
Site 5 (NTUAS)	Stone artefact scatter.	Gentle slope.	Within existing railway line, 10 m east of track.	549	Partially salvaged and potentially destroyed by existing railway line construction. Some potential for remnants within OHTL Corridor.
AS10	Stone artefact scatter, grindstone portable.	High rise adjacent to alluvial flats.	Located 100 m west of existing railway line.	559	Unknown relationship with OHTL Corridor.
AS9	Stone artefact scatter.	Slight rise adjacent to alluvial flats.	Located 90 m east of existing railway line.	559	Outside of OHTL Corridor.
Bridge Creek site 16	Stone artefact scatter, quarry.	Hillside of large, rounded hill.	OHTL preferred route at Adelaide River.	-	Site is located 190 m east of OHTL Corridor.
K3	Quarry, stone artefact scatter.	Low undulating stony hill.	OHTL preferred route at Adelaide River.	-	Site is located 260 m west of OHTL Corridor.
K4	Stone artefact scatter.	Eroded area near creek.	OHTL preferred route at Adelaide River.	-	Site is located 17 m west of OHTL Corridor.
K5	Quarry, stone artefact scatter.	Low rounded hill.	OHTL preferred route at Adelaide River.	-	Within OHTL Corridor.

13.4.2.3 Aboriginal Sacred Sites

The Proponent has applied to AAPA for Authority Certificates to cover the entire Project footprint. Sacred Site locations along the OHTL will be informed by the Authority Certificate process. The conditions outlined in the Authority Certificates will be captured in the proposed CHMPs to guide works in areas where Sacred Sites exist.

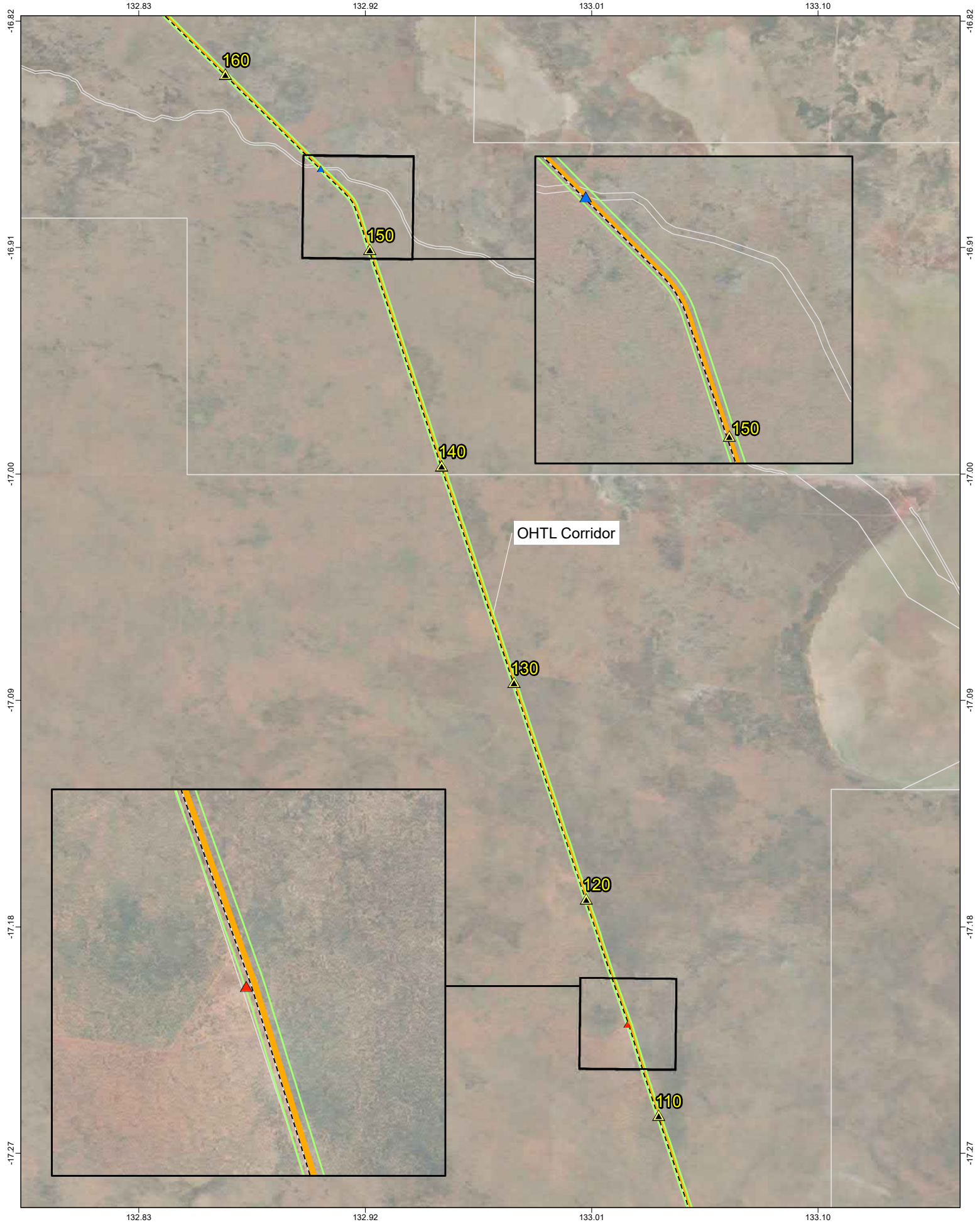
13.4.3 DCS Electrode and Powell Creek Electrode

As noted in Section 13.4.1 and 13.4.4, there are no material changes to the existing environment and cultural values as understood in Chapter 14 of the Draft EIS for the Powell Creek Solar Precinct and AI, the DCS or the Cable Transition Facilities. Though the DCS Electrode and Powell Creek Electrode were not directly assessed in Chapter 14 of the Draft EIS, the contextual information remains relevant.

The Desktop Cultural Heritage Survey records no archaeological or historic sites at the Powell Creek Electrode but notes four archaeological sites proximate to the DCS Electrode. The four sites are of unknown significance and approximately 380 m or more from the DCS Electrode and Access Track.

Figure 13-17 illustrates the four archaeological sites the survey recorded in proximity of the DCS Electrode. Stakeholder engagement with TOs (Appendix 3.1) record recreational and ceremonial areas proximal to the DCS Electrode Site, including those related to water courses.

As noted in the Land Based Electrode Technical Report (Appendix 12.1), several locations were identified as being suitable for the Electrode sites. To refine these areas, a review of the proposed DCS Electrode and Powell Creek Electrode sites against constraints identified in earlier field studies and previous desktop studies was undertaken. The review included Sacred Sites information, archaeological and heritage sites, and cultural heritage information. The final site will be selected following the Constraints Planning and Field Development Procedure (Appendix 4.1).



Legend

- Kilometre Points
- Existing Railway Line
- AAPowerLink Infrastructure
- OHTL Heritage Survey Area (100m from OHTL Corridor)
- Cadastre

Heritage Survey Results
Heritage features recorded in the Desktop Cultural Heritage Database (Earth Sea, 20221115)

Significance

- High
- Moderate
- Low
- Unknown

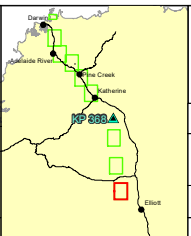


Figure 13-8: Heritage features recorded in the Desktop Cultural Heritage Survey - Map 1 of 9

OHTL Corridor KP 110 to KP 160

Project: **Australia-Asia PowerLink**

Reference #: AAPL_GNR_CTA_GEN_MAP_0441_A

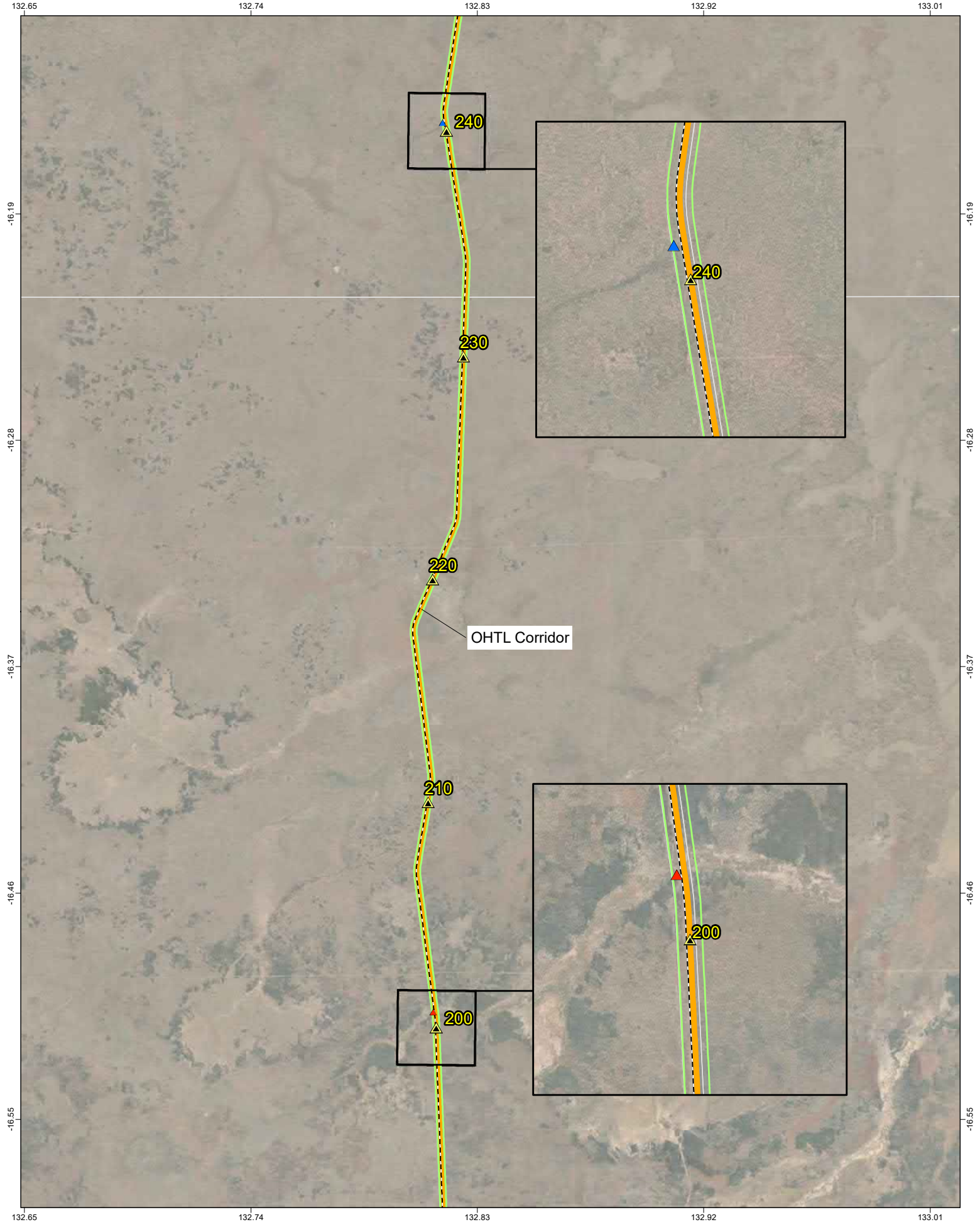
Date: 23/11/2022 Figure: 1 of 9 Revision: A

Scale: 1:210,000 Datum: GDA2020

Coordinate System: GDA2020 A4

Source: NTG data - Parks and reserves. Australian Government data - Railway, roads, coastal waters and marine parks

DISCLAIMER: Sun Cable Pty Ltd disclaims all liability for all claims, expenses, losses, damages, and costs any person/company may incur as a result of their /its reliance on the accuracy or completeness of this document or its capability to achieve any purpose. © Sun Cable Pty Ltd 2022.



Legend

- Kilometre Points
- Existing Railway Line
- AAPowerLink Infrastructure
- OHTL Heritage Survey Area (100m from OHTL Corridor)
- Cadastre

Heritage Survey Results
 Heritage features recorded in the Desktop Cultural Heritage Database (Earth Sea, 20221115)

Significance

- High
- Moderate
- Low
- Unknown

Source: NTG data - Parks and reserves. Australian Government data - Railway, roads, coastal waters and marine parks

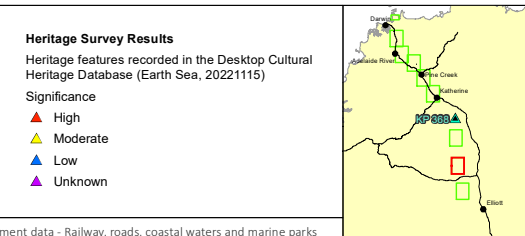


Figure 13-9: Heritage features recorded in the Desktop Cultural Heritage Survey - Map 2 of 9

OHTL Corridor KP 200 to KP 240

Project: **Australia-Asia PowerLink**

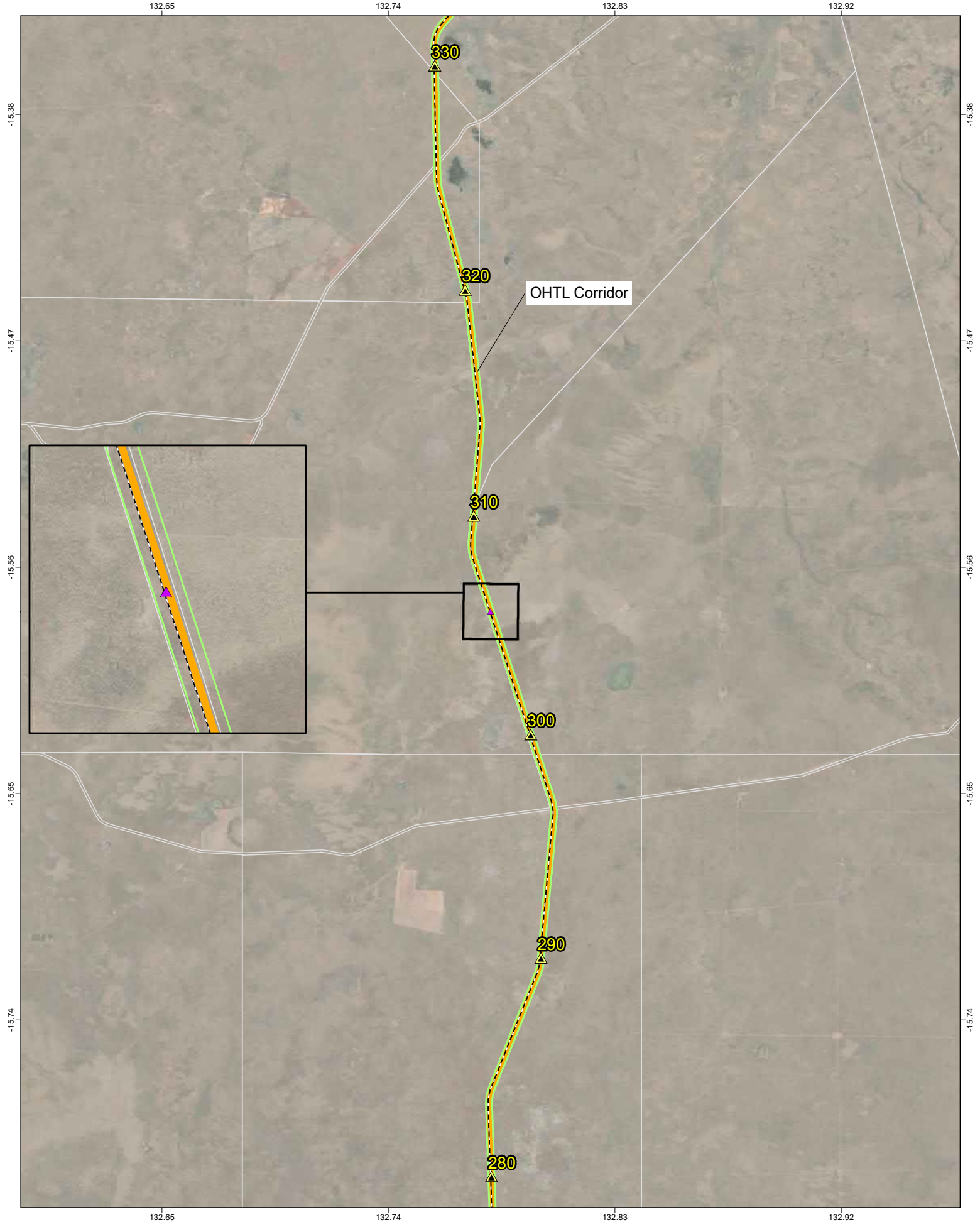
Reference #: AAPL_GNR_CTA_GEN_MAP_0442_A

Date: 23/11/2022 | Figure: 2 of 9 | Revision: A

Scale: 1:210,000 | Datum: GDA2020

Coordinate System: GDA2020 | A4

DISCLAIMER: Sun Cable Pty Ltd disclaims all liability for all claims, expenses, losses, damages, and costs any person/company may incur as a result of their /its reliance on the accuracy or completeness of this document or its capability to achieve any purpose. © Sun Cable Pty Ltd 2022.



Legend

- Kilometre Points
- Existing Railway Line
- AAPowerLink Infrastructure
- OHTL Heritage Survey Area (100m from OHTL Corridor)
- Cadastre

Heritage Survey Results
Heritage features recorded in the Desktop Cultural Heritage Database (Earth Sea, 20221115)

Significance

- High
- Moderate
- Low
- Unknown

Source: NTG data - Parks and reserves. Australian Government data - Railway, roads, coastal waters and marine parks

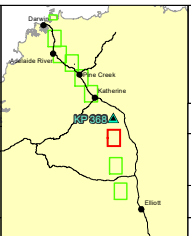


Figure 13-10: Heritage features recorded in the Desktop Cultural Heritage Survey - Map 3 of 9

OHTL Corridor KP 280 to KP 330

Project: **Australia-Asia PowerLink**

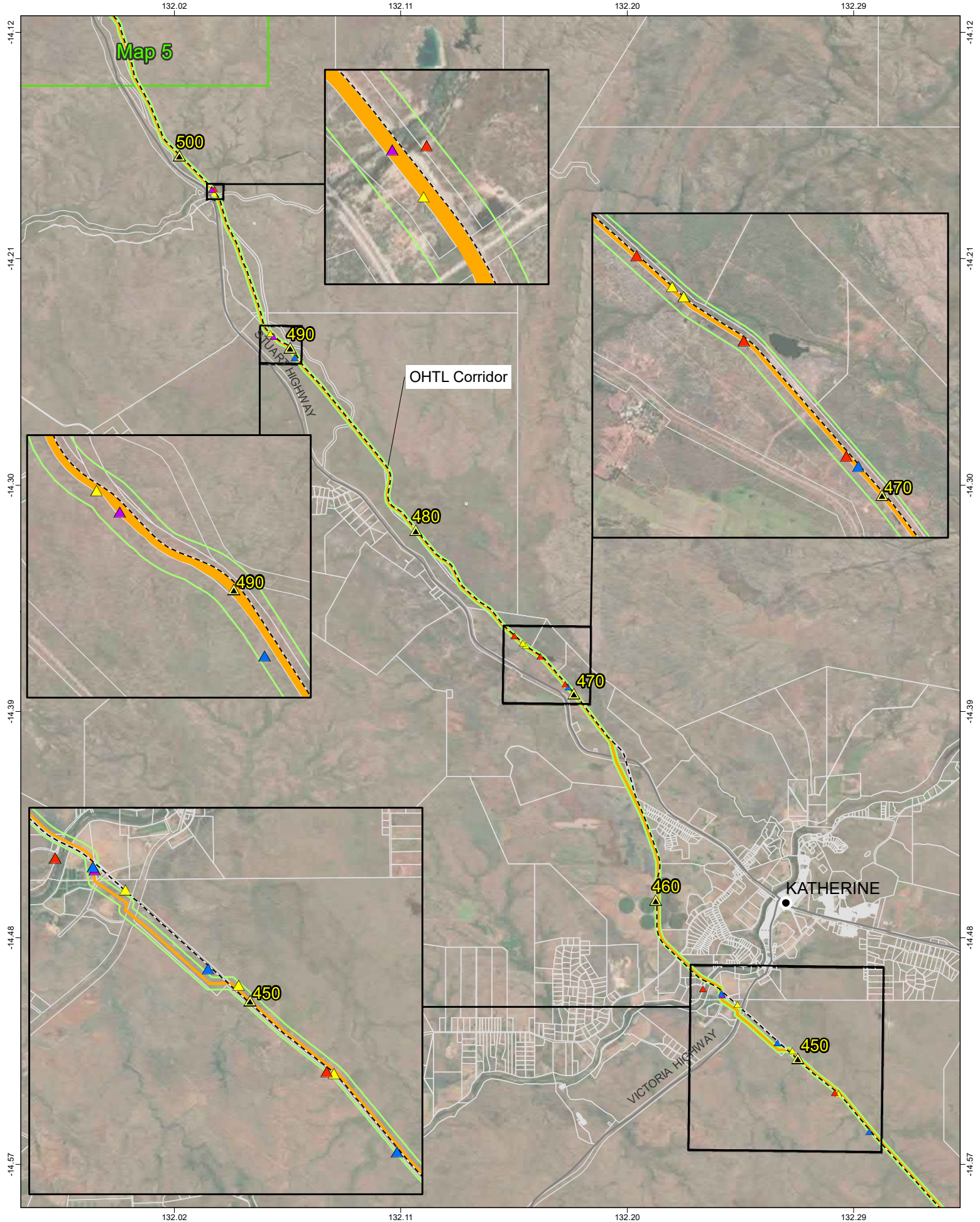
Reference #: AAPL_GNR_CTA_GEN_MAP_0443_A

Date: 23/11/2022 Figure: 3 of 9 Revision: A

Scale: 1:210,000 Datum: GDA2020

Coordinate System: GDA2020 A4

DISCLAIMER: Sun Cable Pty Ltd disclaims all liability for all claims, expenses, losses, damages, and costs any person/company may incur as a result of their /its reliance on the accuracy or completeness of this document or its capability to achieve any purpose. © Sun Cable Pty Ltd 2022.



Legend

- Kilometre Points
- Roads
- Existing Railway Line
- AAPowerLink Infrastructure
- OHTL Heritage Survey Area (100m from OHTL Corridor)
- Cadastre

Heritage Survey Results
Heritage features recorded in the Desktop Cultural Heritage Database (Earth Sea, 20221115)

Significance

- High
- Moderate
- Low
- Unknown

Source: NTG data - Parks and reserves. Australian Government data - Railway, roads, coastal waters and marine parks

Figure 13-11: Heritage features recorded in the Desktop Cultural Heritage Survey - Map 4 of 9

OHTL Corridor KP 450 to KP 500

Project: **Australia-Asia PowerLink**

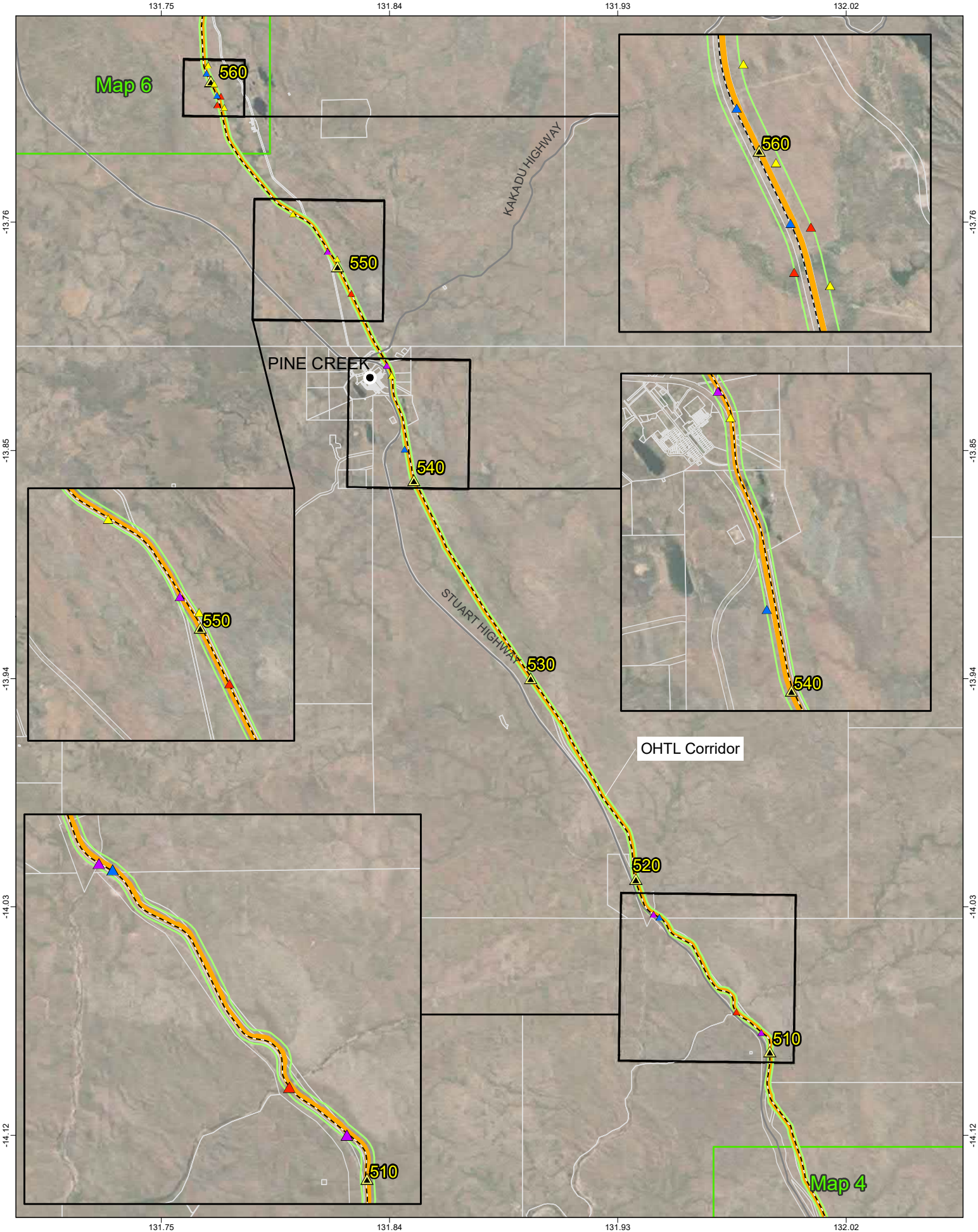
Reference #: AAPL_GNR_CTA_GEN_MAP_0444_A

Date: 23/11/2022 | Figure: 4 of 9 | Revision: A

Scale: 1:210,000 | Datum: GDA2020

Coordinate System: GDA2020 | A4

DISCLAIMER: Sun Cable Pty Ltd disclaims all liability for all claims, expenses, losses, damages, and costs any person/company may incur as a result of their /its reliance on the accuracy or completeness of this document or its capability to achieve any purpose. © Sun Cable Pty Ltd 2022.



Map 6

Map 4

PINE CREEK

KAKADU HIGHWAY

STUART HIGHWAY

OHTL Corridor

Legend

- Kilometre Points
- Roads
- Existing Railway Line
- AAPowerLink Infrastructure
- OHTL Heritage Survey Area (100m from OHTL Corridor)
- Cadastre

Heritage Survey Results
Heritage features recorded in the Desktop Cultural Heritage Database (Earth Sea, 20221115)

Significance

- High
- Moderate
- Low
- Unknown

Source: NTG data - Parks and reserves. Australian Government data - Railway, roads, coastal waters and marine parks

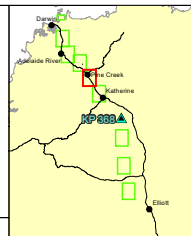
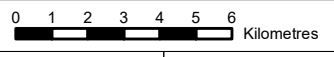


Figure 13-12: Heritage features recorded in the Desktop Cultural Heritage Survey - Map 5 of 9

OHTL Corridor KP 510 to KP 560

Project: **Australia-Asia PowerLink**



Scale: 1:210,000 Datum: GDA2020
Coordinate System: GDA2020

Reference #: AAPL_GNR_CTA_GEN_MAP_0445_A		
Date: 23/11/2022	Figure: 5 of 9	Revision: A



DISCLAIMER: Sun Cable Pty Ltd disclaims all liability for all claims, expenses, losses, damages, and costs any person/company may incur as a result of their /its reliance on the accuracy or completeness of this document or its capability to achieve any purpose. © Sun Cable Pty Ltd 2022.

131.48

131.57

131.66

131.75

-13.31

-13.31

-13.40

-13.40

-13.49

-13.49

-13.58

-13.58

-13.67

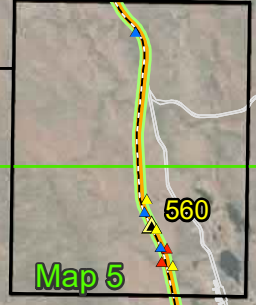
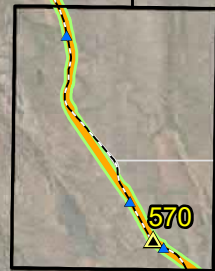
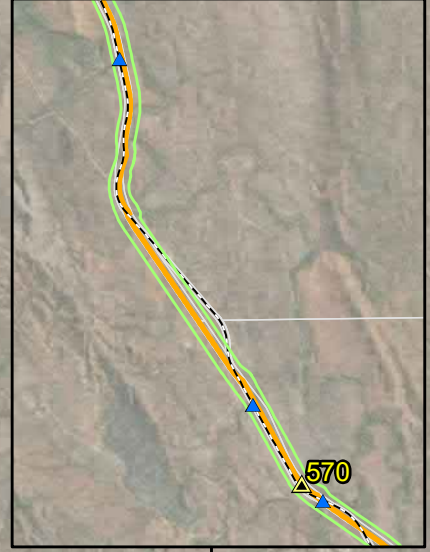
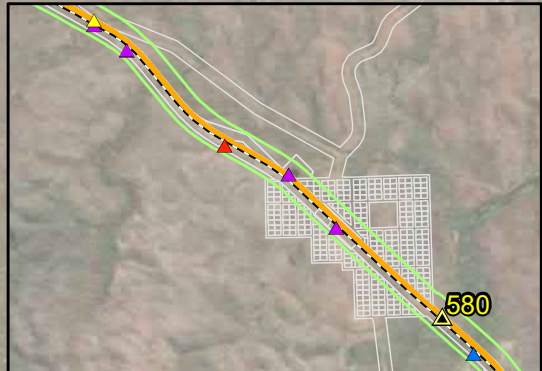
-13.67

131.48

131.57

131.66

131.75



OHTL Corridor

STUART HIGHWAY

Map 5

Legend

- Kilometre Points
- Roads
- Existing Railway Line
- AAPowerLink Infrastructure
- OHTL Heritage Survey Area (100m from OHTL Corridor)
- Cadastre

Heritage Survey Results
Heritage features recorded in the Desktop Cultural Heritage Database (Earth Sea, 20221115)

Significance

- High
- Moderate
- Low
- Unknown

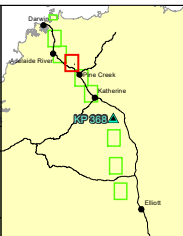
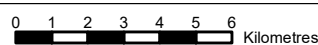


Figure 13-13: Heritage features recorded in the Desktop Cultural Heritage Survey - Map 6 of 9

OHTL Corridor KP 560 to KP 610

Project: **Australia-Asia PowerLink**



Scale: 1:210,000 Datum: GDA2020

Coordinate System: GDA2020

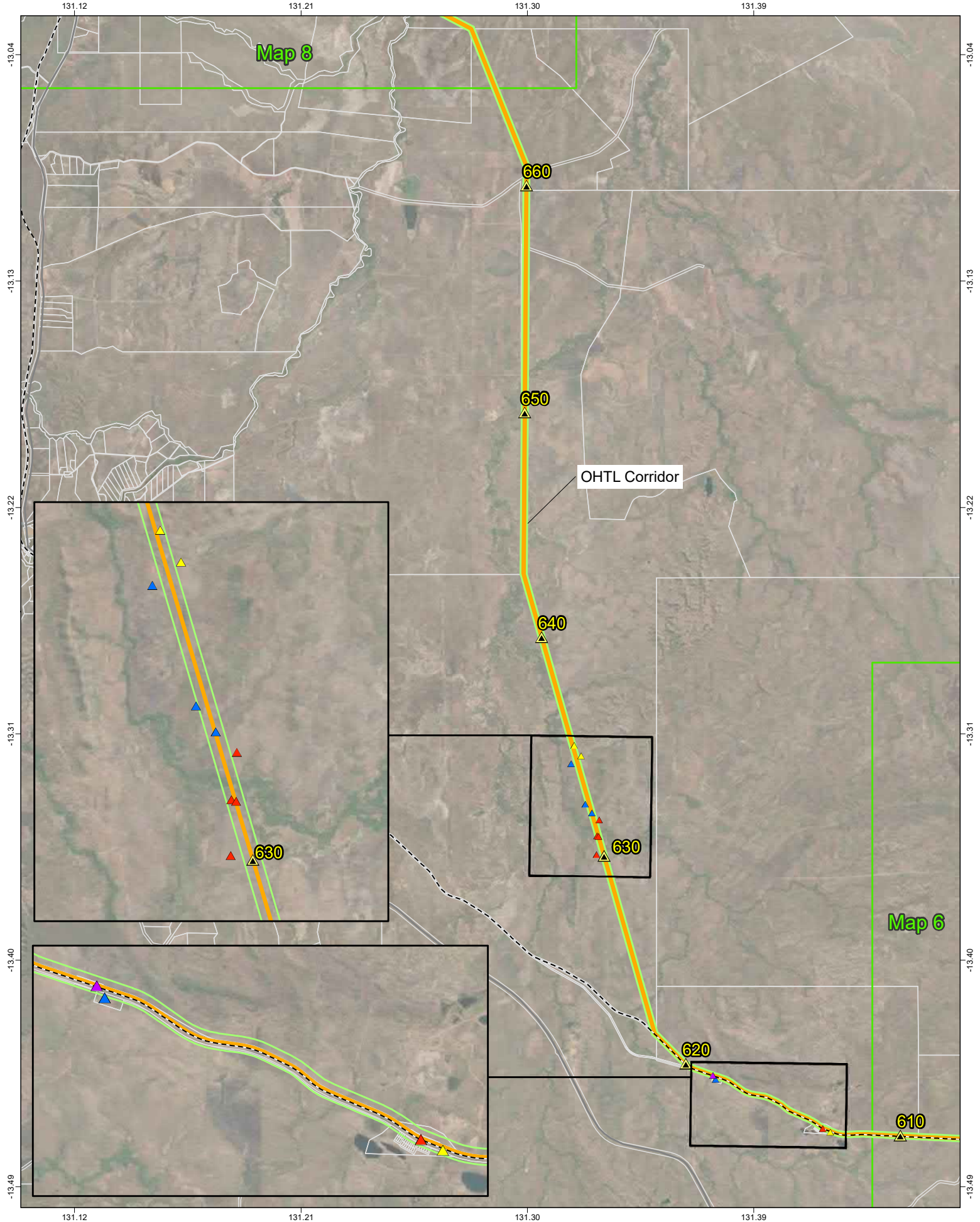
Reference #: AAPL_GNR_CTA_GEN_MAP_0446_A

Date: 23/11/2022 Figure: 6 of 9 Revision: A



Source: NTG data - Parks and reserves. Australian Government data - Railway, roads, coastal waters and marine parks

DISCLAIMER: Sun Cable Pty Ltd disclaims all liability for all claims, expenses, losses, damages, and costs any person/company may incur as a result of their /its reliance on the accuracy or completeness of this document or its capability to achieve any purpose. © Sun Cable Pty Ltd 2022.



Legend

- Kilometre Points
- Roads
- Existing Railway Line
- AAPowerLink Infrastructure
- OHTL Heritage Survey Area (100m from OHTL Corridor)
- Cadastre

Heritage Survey Results
Heritage features recorded in the Desktop Cultural Heritage Database (Earth Sea, 2022 1115)

Significance

- High
- Moderate
- Low
- Unknown

Source: NTG data - Parks and reserves. Australian Government data - Railway, roads, coastal waters and marine parks

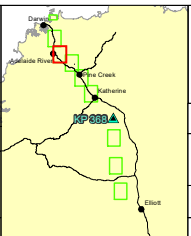


Figure 13-14: Heritage features recorded in the Desktop Cultural Heritage Survey - Map 7 of 9

OHTL Corridor KP 610 to KP 660

Project: **Australia-Asia PowerLink**

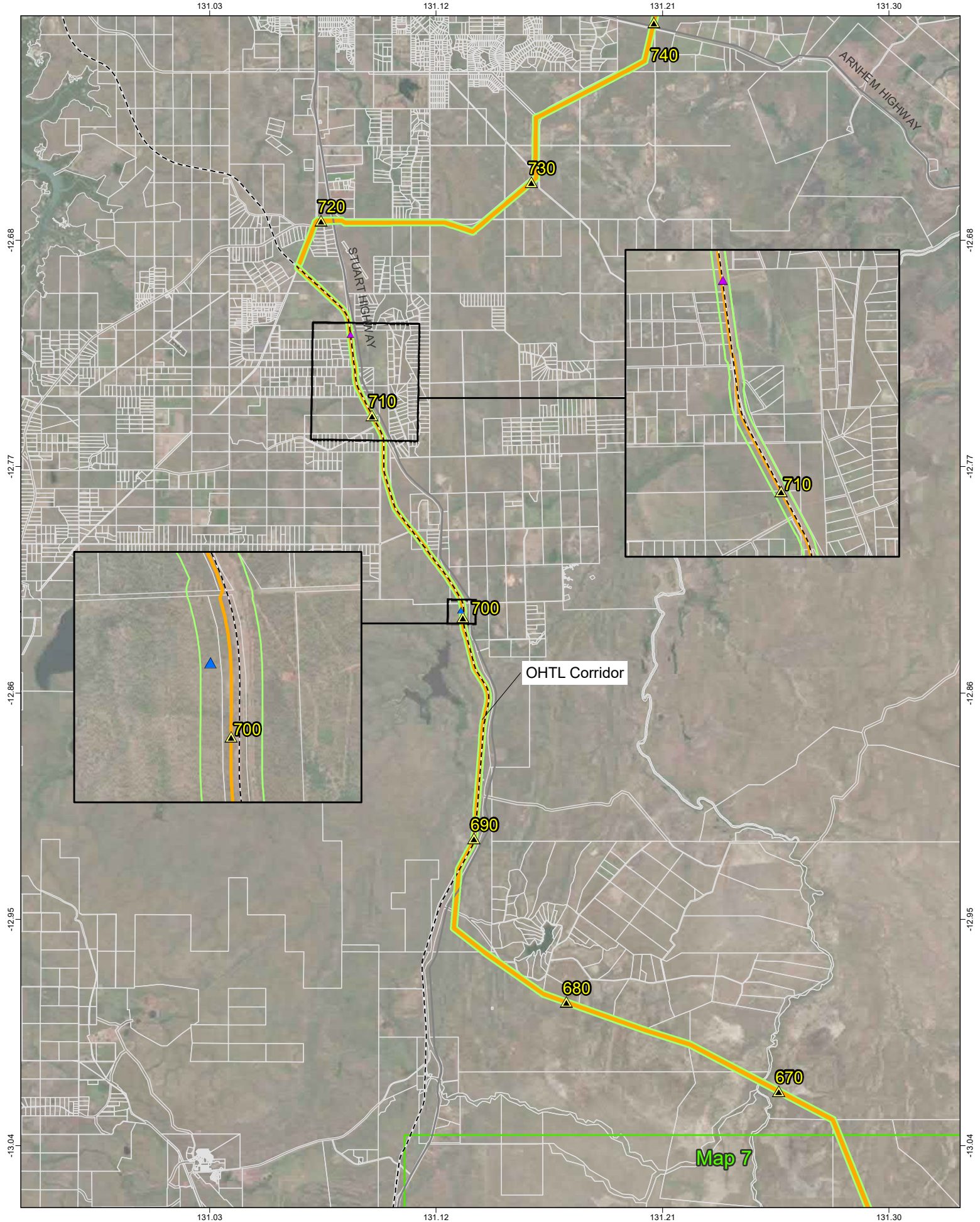
Reference #: AAPL_GNR_CTA_GEN_MAP_0447_A

Date: 23/11/2022 | Figure: 7 of 9 | Revision: A

Scale: 1:210,000 | Datum: GDA2020

Coordinate System: GDA2020 | A4

DISCLAIMER: Sun Cable Pty Ltd disclaims all liability for all claims, expenses, losses, damages, and costs any person/company may incur as a result of their /its reliance on the accuracy or completeness of this document or its capability to achieve any purpose. © Sun Cable Pty Ltd 2022.



Legend

- Kilometre Points
- Roads
- Existing Railway Line
- AAPowerLink Infrastructure
- OHTL Heritage Survey Area (100m from OHTL Corridor)
- Cadastre

Heritage Survey Results
Heritage features recorded in the Desktop Cultural Heritage Database (Earth Sea, 20221115)

Significance

- High
- Moderate
- Low
- Unknown

Source: NTG data - Parks and reserves. Australian Government data - Railway, roads, coastal waters and marine parks

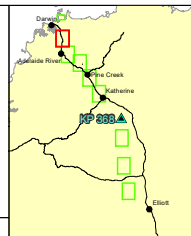


Figure 13-15: Heritage features recorded in the Desktop Cultural Heritage Survey - Map 8 of 9

OHTL Corridor KP 670 to KP 740

Project: **Australia-Asia PowerLink**

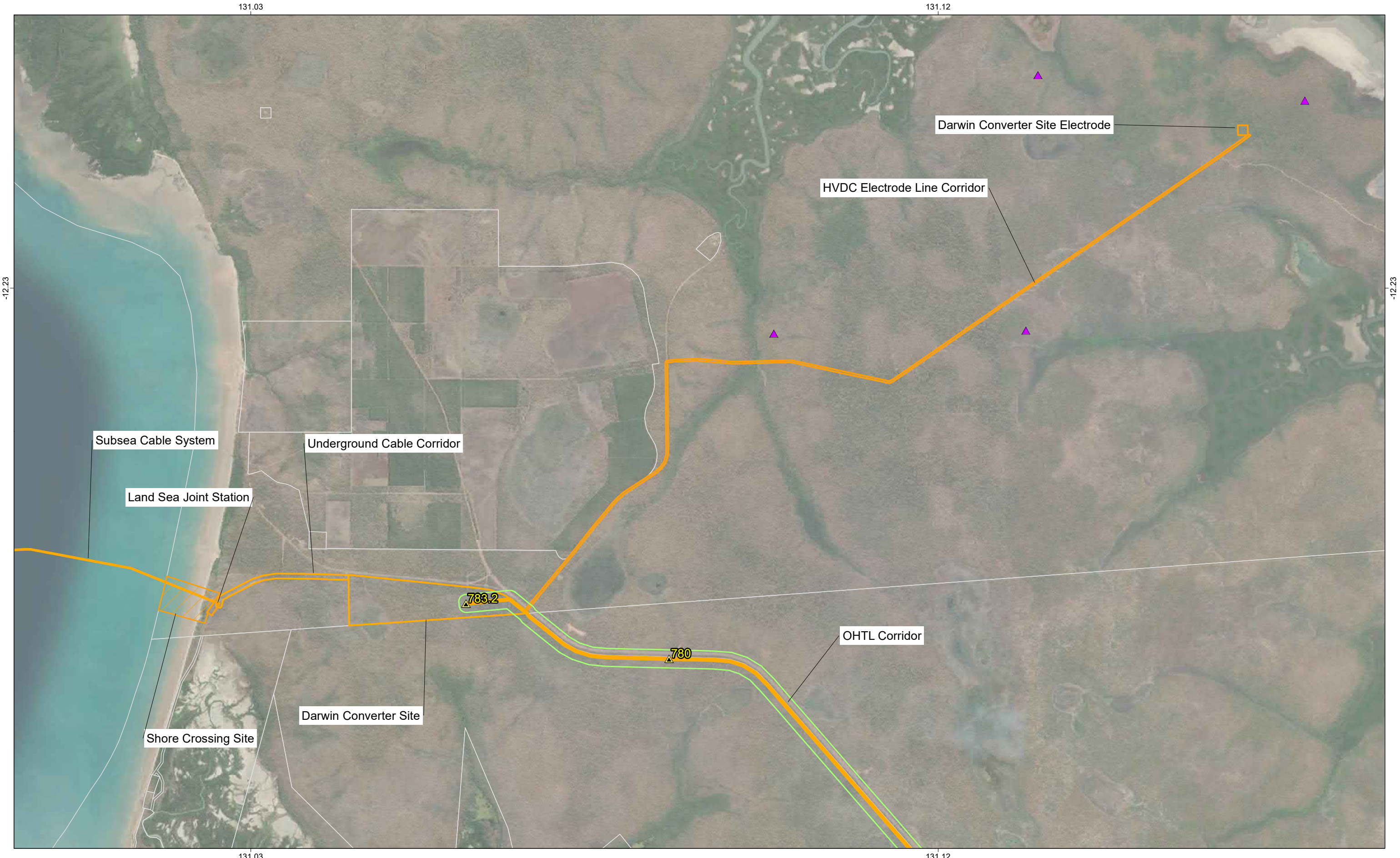
Reference #: AAPL_GNR_CTA_GEN_MAP_0448_A

Date: 23/11/2022 | Figure: 8 of 9 | Revision: A

Scale: 1:210,000 | Datum: GDA2020

Coordinate System: GDA2020 | A4

DISCLAIMER: Sun Cable Pty Ltd disclaims all liability for all claims, expenses, losses, damages, and costs any person/company may incur as a result of their /its reliance on the accuracy or completeness of this document or its capability to achieve any purpose. © Sun Cable Pty Ltd 2022.



Legend

- Kilometre Points
- Existing Railway Line
- Roads
- AAPowerLink Infrastructure
- OHTL Heritage Survey Area (100m from OHTL Corridor)
- Cadastre

Heritage Survey Results
Heritage features recorded in the Desktop Cultural Heritage Database (Earth Sea, 20221115)

Significance

- High
- Moderate
- Low
- Unknown

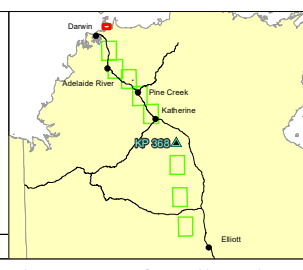


Figure 13-16: Heritage feartures recorded in the Desktop Cultural Heritage Survey - Map 9 of 9
DCS Electrode

Project: Australia-Asia PowerLink	Reference #: AAPL_GNR_CTA_GEN_MAP_0449_A	Figure: 1 of 9	Revision: A
Coordinate System: GDA2020	Datum: GDA2020	Date: 23/11/2022	
		Scale: 1:50,000	

Source: Source: Esri, Maxar, Earthstar Geographics, and the GIS User Community
DISCLAIMER: Sun Cable Pty Ltd disclaims all liability for all claims, expenses, losses, damages, and costs any person/company may incur as a result of their /its reliance on the accuracy or completeness of this document or its capability to achieve any purpose. © Sun Cable Pty Ltd 2022.

13.4.4 DCS and Cable Transition Facilities

There are no material changes to the existing environment and cultural values related to the DCS or Cable Transition Facilities as understood in Chapter 14 of the Draft EIS. The Proponent and AAPA are currently undertaking Sacred Site surveys in this area in consultation with the NLC and TOs. As recorded in the Stakeholder Consultation Report (Appendix 3.1) accessing recreational areas at Gunn Point Beach is a priority for TOs to maintain the area's cultural and social value.

13.4.5 Subsea Cable System

There are no significant changes to the existing cultural heritage values as understood in Chapter 14 of the Draft EIS. Baseline marine data describing the Subsea Cable System refined route is discussed in Chapters 8 and 9 of this SEIS. The Proponent is undertaking a desktop maritime assessment inclusive of underwater cultural heritage survey data to be included in subsequent additions to the EIA.

13.4.6 Potential Impacts

The potential impacts to culture and heritage associated with the construction and operation of the Project were identified and assessed using the EIA methodology described in Chapter 3 of the Draft EIS, as well as the methodology summarised in Chapter 1 of this SEIS, taking into account the findings of the HIAs. The EIA identified and assessed the following impacts:

- Direct impact to heritage features, including Aboriginal Sacred Sites, Aboriginal archaeological places and objects, historic heritage features and culturally significant landscape features
- Indirect impact to heritage features listed above
- Direct or indirect impact to unrecorded heritage features.

As discussed in Section 13.4, culture and heritage values generally remain consistent with those identified in the Draft EIS. Additional impacts associated with the project refinements assessed in this SEIS are summarised in Table 13-6 and Table 13-7, as well as throughout this section.

13.4.7 Areas of Potential Impact (Direct and Indirect)

The area within which heritage features may be directly or indirectly impacted has not changed from the Draft EIS apart from the project refinements described in Section 13.3 and Chapter 2 of this SEIS.

Heritage features may be directly impacted within the extent of the project refinement footprint where land clearing and disturbance will occur, and project infrastructure will be installed. The direct disturbance footprint where heritage features could be impacted encompasses both the permanent footprint of the infrastructure, Access Roads and the temporary works areas used during construction. Indirect impacts to heritage features outside of the proposal footprint will generally be limited to within a few hundred meters of the works areas where there may be increased movement by project personnel or the public on new Access Roads.

13.4.8 Direct impact to heritage features

The potential direct impacts to heritage features associated with the Project as understood in Section 14.4.4.1 of the Draft EIS are applicable to the project refinements.

In relation to Aboriginal Sacred Sites, the AAPA Authority Certificate process provides a robust framework for avoiding and minimising impacts.

There are no known Sacred Sites in the proposal footprint however, it is possible that Sacred Site clearance surveys will identify previously unrecorded sites. Authority Certificate applications have been submitted by the Proponent and AAPA are in the process of undertaking site clearance surveys in consultation with the NLC and TOs. The Proponent has committed to comply with all conditions of Authority Certificates. The Constraints Planning and Field Development Procedure (Appendix 4.1) further restates that no activities will occur within sacred and heritage sites identified as a no-go zone in the AAPA Certificate.

The heritage features that could potentially be directly impacted by the activities associated with project refinements are summarised in Table 13-4. These include 25 archaeological sites, 23 isolated artefacts, five declared heritage places and 28 historic heritage sites.

Table 13-4: Heritage features potentially directly impacted by the Project

Component	Archaeological Sites	Isolated Artefacts	Declared Heritage Places	Historic Heritage Sites
Preferred OHTL Corridor	25	20	5	27
DCS Electrode	0	3	0	1
Powell Creek Electrode	0	0	0	0
Totals	25	23	5	28
Total assessed as High Significance²	11	4	5	0

The Brocks Creek Township, Railway Siding and Military Detention Barracks is the only declared heritage place partially within the proposed OHTL Corridor (Section 13.4.2.1). The Proponent has committed to working with TOs, AAPA and the NTG’s Heritage Branch to develop a CHMP that will prescribe the site protection and management measures required for each site. The *Heritage Act 2011* (NT) includes provisions for making an ‘Application to Carry Out Work on a Heritage Place or Object’ where impacts cannot be avoided. It is anticipated that the Proponent will need to make applications in relation to several sites and will liaise with the NTG’s Heritage Branch to complete the required statutory process.

While there is minor additional footprint within the preferred OHTL Corridor where a direct impact to heritage features may occur, the impact is still limited to the disturbance footprint. Additionally, the likelihood and presence of declared heritage places and sites of high significance remains consistent with the Draft EIS.

13.4.9 Indirect Impact to Heritage Features

The changes to the construction disturbance footprint of the project refinements summate to an approximate 1% overall increase³ compared to the Draft EIS. There are no changes to indirect impacts to heritage features related to construction as described in the Draft EIS.

There is potential for indirect impact to the recreational and ceremonial areas proximate to the DCS Electrode, which has been assessed as having high significance to TOs.

² The Desktop Cultural Heritage Survey did not record any sites of high significance at the DCS Electrode or Powell Creek Electrode

³ The Draft EIS proposes 15,035 ha total clearance area for construction; this SEIS proposes, 15,238 ha.

The ephemeral creeks that cross below the DCS Electrode Access Track are considered in Chapter 7 of this SEIS. Mitigation measures are proposed in Table 7-3 to maintain the existing hydrological regime and WQ. Additionally, access to recreational and ceremonial areas will be maintained where possible to sustain cultural resource use.

13.4.10 Direct or indirect impact to unrecorded heritage features

The project refinements are not anticipated to materially change the direct or indirect impact to unrecorded heritage features across all sites on land as assessed in the Draft EIS. To support the management of unrecorded heritage features, an Unexpected Archaeological or Heritage Finds Procedure and A Discovery of Human Remains Procedure will be developed in alignment with the process outlined in Sections 13.5.2 and Section 13.5.3.

In relation to Aboriginal Sacred Sites, the AAPA Authority Certificate process provides a robust framework for avoiding and minimising impacts. There are no known Sacred Sites in the proposal footprint however, it is possible that Sacred Site clearance surveys will identify previously unrecorded sites. Authority Certificate applications submitted by the Proponent and AAPA will now undertake site clearance surveys in consultation with the NLC and TOs. As noted in the Stakeholder Consultation Report (Appendix 3.1) there is an opportunity through the AAPA and NLC site protection process for the Proponent to contribute to preserving cultural knowledge through the mapping of valuable sacred sites and cultural heritage information in the project footprint, potentially delivering a positive impact.

13.5 Avoidance, Mitigation and Monitoring

The Proponent is committed to applying the environmental decision-making hierarchy when making decisions that could affect the environment, culture, and heritage. Consistent with Section 26 of the *EP Act* this involves applying the following approaches in order of priority:

1. Avoid - ensure that actions are designed to avoid adverse impacts on culture and heritage
2. Mitigate - identify management options to mitigate adverse impacts on culture and heritage to the greatest extent practicable
3. Offset - if appropriate, provide for environmental offsets for residual adverse impacts on the environment that cannot be avoided or mitigated.

The decision-making hierarchy has been considered in developing the avoidance, mitigation and monitoring measures outlined in Table 13-5.

The environmental management framework that will be adopted for the construction and operation of the Project is detailed in Chapter 17 Environmental Management. A key component of the framework will be the CHMP. The CHMP will be prepared in consultation with TOs and the NT Heritage Branch and will consider best industry practice, drawing on the archaeological and cultural values of heritage features recorded in the proposal footprint and surrounding areas. In accordance with recommendations made in the HIAs the CHMP will align with the framework outlined in Section 13.5.1.

Table 13-5: Culture and Heritage - Commitments

Impact	Avoidance	Mitigation	Monitoring
Direct impact to heritage features, including Aboriginal Sacred Sites, Aboriginal archaeological places and objects, historic heritage features and culturally significant landscape features.	No activities will occur within sacred and heritage sites identified as a no-go zone in the AAPA certificate (Appendix 4.1).	The CHMP will be prepared in consultation with TOs and the NT Heritage Branch in alignment with the framework described in Section 13.5.1.	Consistent with Draft EIS measures.
Indirect impact to heritage features listed above.	Consistent with Draft EIS measures.	Consistent with Draft EIS measures.	Consistent with Draft EIS measures.
Direct or indirect impact to unrecorded heritage features.	Consistent with Draft EIS measures.	Prepare An Unexpected Archaeological or Heritage Finds Procedure and A Discovery of Human Remains Procedure in alignment with the process outlined in Section 13.5.2 and Section 13.5.3.	Consistent with Draft EIS measures.

13.5.1 Cultural Heritage Management Plan

The CHMP is an agreement between the Proponent and TOs about how the Project is to be managed to avoid impacts to Aboriginal cultural heritage and to the extent that impacts cannot reasonably be avoided, to minimise impact to Aboriginal cultural heritage. The CHMP will cover all operational phases of the Project including, planning, construction, operation, and decommissioning and will be submitted prior to construction.

The CHMP framework outlines the standards and processes to be implemented to mitigate any potential impacts on cultural heritage. Below are specific CHMP elements aimed to be developed for each project area:

- Solar Precinct (and other AI areas within the Powell Creek ILUA area e.g., accommodation, gravel pits, access tracks, cathodic protection areas, aerodrome etc.)
- OHTL – KP 00 to KP 722 (Solar Precinct to Livingstone)
- OHTL KP 722 to Murrumujuk (OHTL Infrastructure Corridor from Livingstone (Chainage 722) to Murrumujuk Beach, including the DCS and Cable Transition Facilities at Murrumujuk)
- Subsea Cable System within the Cwth Marine Area.

13.5.1.1 Scope

The CHMP will focus solely on areas within the Project footprint and sites of significance which maybe indirectly impacted by construction and operation of the Project.

The CHMPs will aim to include both tangible and intangible Aboriginal heritage values and historic features, as applicable to the following legislation:

- *Aboriginal Land Rights (NT) Act 1976 (Cwth). Sacred sites, that is sacred to Aboriginals or is otherwise of significance according to Aboriginal tradition*
- *Native Title Act 1993 (Cwth). Sites of significance within areas the NTA applies. This may also include areas with intangible values*
- *EPBC Act. Sites registered on the National Heritage Register, Cwth Heritage Register, World Heritage Register*
- *Heritage Act 2011 (NT). Aboriginal, Macassan and historic sites as defined in the Act*
- *NT Aboriginal Sacred Sites Act 1989. Sacred sites as defined by the Act, also with respect to the conditions outlined in the Aboriginal Area Protection Authority Certificates where applicable.*

13.5.1.2 Primary Objectives

The CHMPs primary objectives will be to avoid all areas which have cultural, archaeological and/or statutory values. The CHMP will describe activities for each phase based on their potential impacts to cultural heritage features from low impact to high impact.

Where this is not possible or the status of heritage features is unknown, the CHMP will outline the agreed management and mitigation measure for these situations. These management and mitigation measures may include (but are not limited to) the following or a combination of following:

- Identification of areas where further detailed or targeted cultural heritage inspections/surveys area required
- Specific site/artefact avoidance buffers or conditions
- Specific salvage/mitigation processes where sites/artefacts cannot be avoided

- Monitoring processes to manage construction activity impacts to cultural heritage within sensitive and heritage risk areas
- Storage, curation, and reparation of salvage/mitigation cultural heritage features
- Consultation requirements for certain activities
- Future activity requirements
- Chance Finds Procedure
- Breach and incident investigation.

13.5.1.3 NLC and AAPA Participation

NLC

It is proposed that NLC's involvement in the CHMP will be the following:

- Identify TOs for each area (or establishment of liaison committees) to attend meetings and be available for work programs
- Identify areas of cultural significance or values, including areas which may fall outside the NT regulatory regime i.e., areas of intangible values such as dreaming corridors, resource areas or features and hunting areas that may require consideration
- Assist with site management discussions such as monitoring of sites during construction and mitigation, storage, and repatriation of artefacts
- Participate in liaison committee meetings related to cultural heritage or to ensure cultural heritage is part of other liaison committee meetings, where appropriate.

AAPA

The Proponent will include any conditions outlined in the AAPA Authority Certificates.

13.5.2 Discovery of Unexpected Archaeological or Heritage Finds Process

The flowchart illustrated in Figure 13-18 seeks to describe the process applicable to the unanticipated discovery of an actual or potential heritage or archaeological item. This process must be followed by all project personnel, contractors, subcontractors, consultants, or any person undertaking work for the Project. It includes references to some of the relevant legislative and regulatory requirements but is not intended to replace them. This process applies to all project activities throughout delivery, development, and operation. An Unexpected Archaeological or Heritage Finds Procedure will be developed to expand on the process outlined below and provide a consistent approach to the management of unexpected Aboriginal and non-Aboriginal heritage uncovered during project activities. The process will be developed in the CHMP framework and tailored to suit project activities in both terrestrial and marine environments.

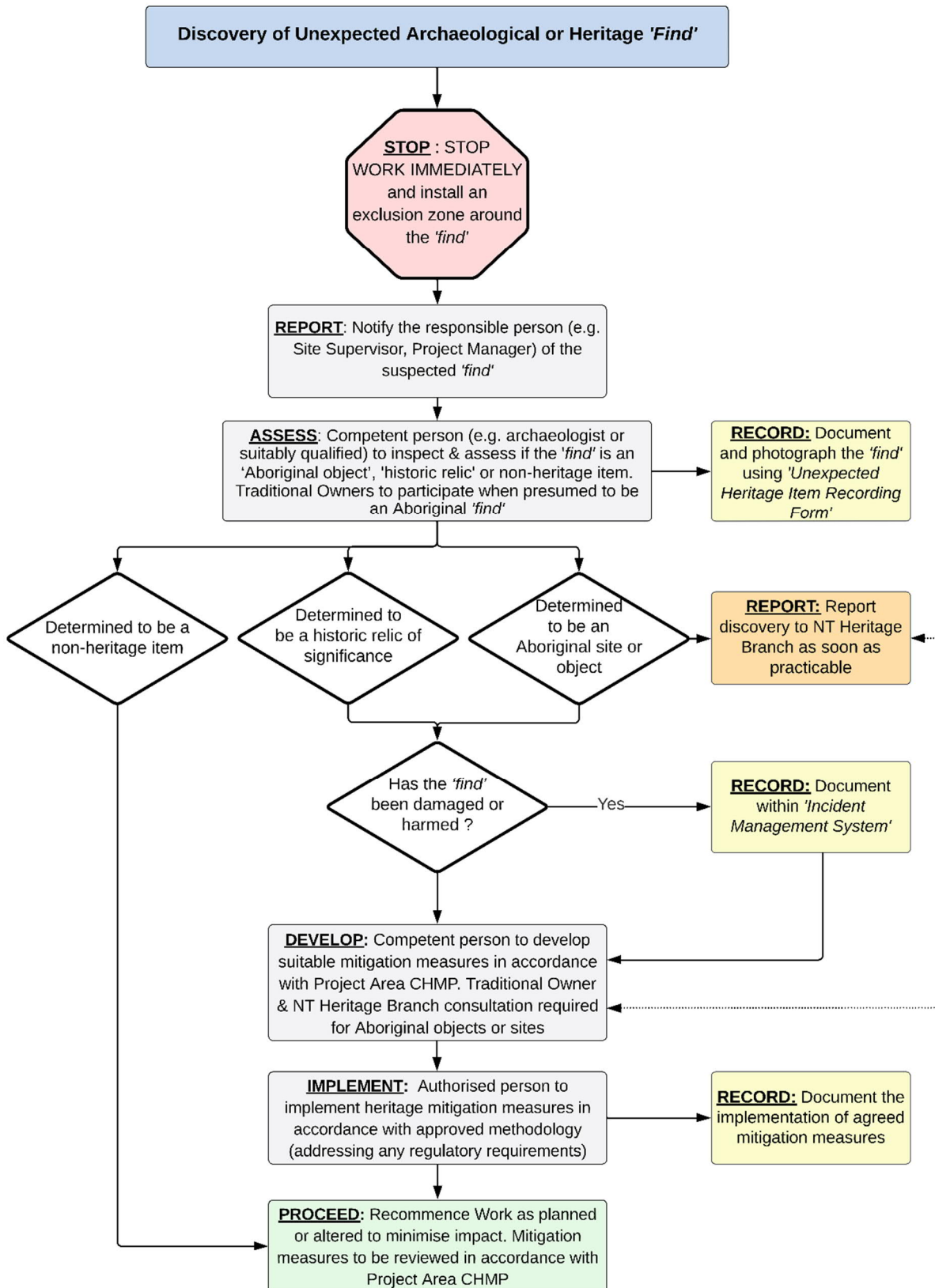


Figure 13-18: Discovery of Unexpected Archaeological or Heritage Finds Flowchart

13.5.3 Discovery of Human Remains Process

Figure 13-19 aims to describe the process applicable to the unanticipated discovery of actual or potential human remains. This process must be followed by all project personnel, contractors, subcontractors, consultants, or any person undertaking work for the Project. It includes references to some of the relevant legislative and regulatory requirements but is not intended to replace them. This process applies to all project activities throughout delivery, development, and operation. A Discovery of Human Remains Procedure will be developed to expand on the process outlined below and provide a consistent approach to the management of unexpected Aboriginal and non-Aboriginal heritage uncovered during project activities. Similarly, to the Unexpected Finds Process, it will be developed in the CHMP framework and tailored to suit project activities in both terrestrial and marine environments.

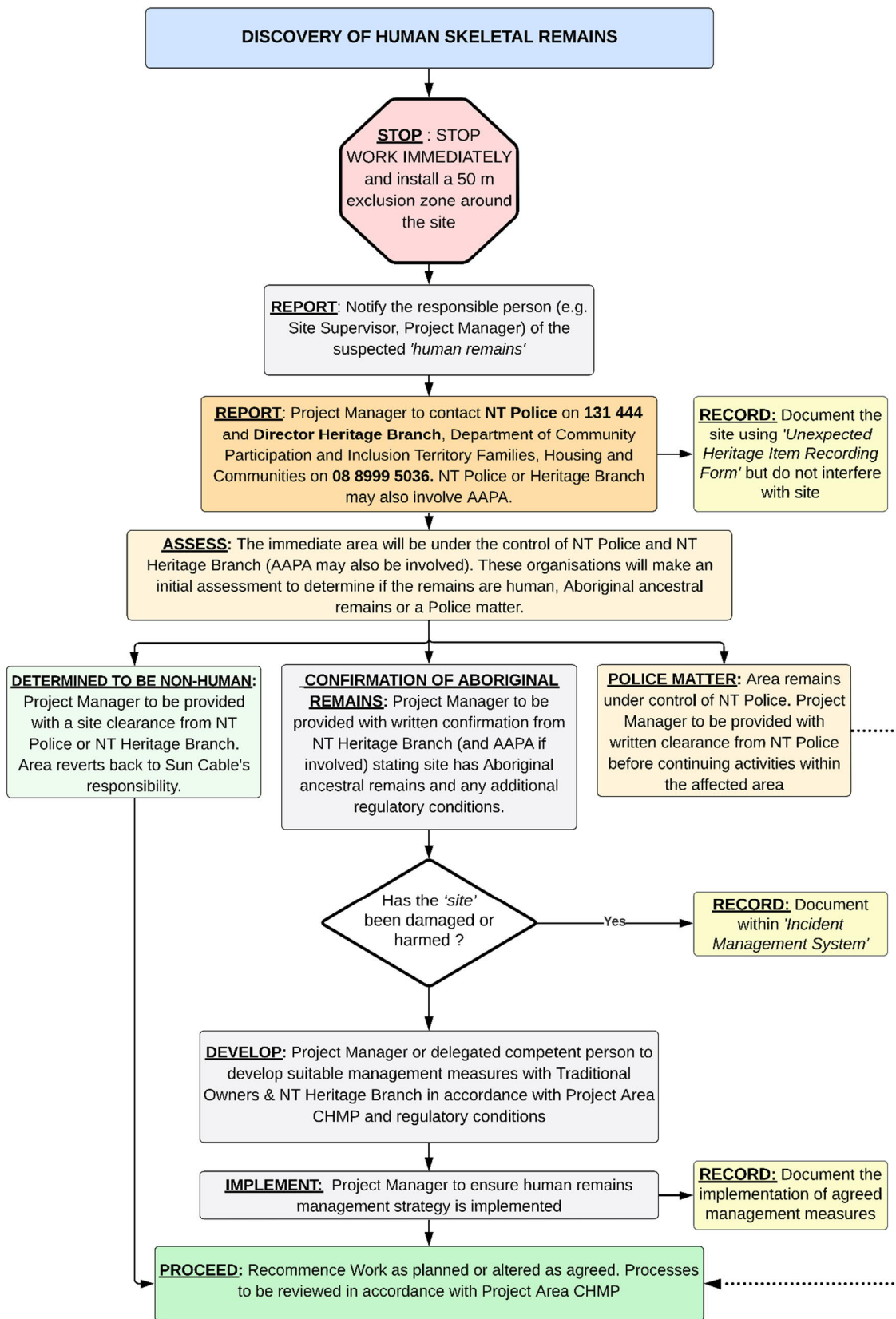


Figure 13-19: Discovery of Human Skeletal Remains Flowchart

13.6 Residual Impact

All residual impacts have a rating of ‘minor’ or ‘moderate’ showing no change to the residual impact conclusions reached in the Draft EIS. Any identified uncertainties are addressed with monitoring and mitigation measures. All residual impacts are considered not significant.

Residual risk ratings are consistent with the Draft EIS and take into account a degree of uncertainty as the remaining HIAs or the AAPA certificate application process have not been completed. Should the outstanding HIAs and AAPA certificate applications indicate that a revised rating for certain Project activities be applied, the Proponent will revise with regard to the relevant management plans and procedures detailed in the SEIS and implement appropriate measures in the corresponding CHMP.

Table 13-6: Summary of EIA results – Culture and heritage factor – Construction

Impact	Location	Likelihood	Scale	Duration	Magnitude	Value rating	Certainty	Residual Impact
Direct impact to heritage features.	OHTL.	Likely Construction will involve ground disturbance in areas where heritage features have been recorded.	Limited Limited to within construction corridor footprint, which is 22 m wide and for OHTL construction pads of 60 m x 100 m. Vegetation management to maintain low vegetation (<6 m tall) will also occur within an approximate 38 m wide corridor (appropriate to OHTL dimensions).	Permanent Heritage features disturbed during construction will be permanently impacted.	Minor Direct impacts to heritage features of high significance will be avoided during final route selection and structure placement. Other features will be salvaged.	High There are declared heritage places and sites of Aboriginal significance in the OHTL Corridor.	Low Cultural Heritage Surveys undertaken described in Table 13-1. Sacred Sites clearances are pending. Site-specific mitigation measures to be determined.	Moderate
	DCS Electrode.	Possible Construction will involve ground disturbance proximate to heritage features.	Not assessed as no heritage features recorded in direct disturbance footprint – no direct impact.				Low Desktop Cultural Heritage Survey (Appendix 13.1) records no heritage features. Sacred Sites clearance are pending.	Minor⁴
	Powell Creek Electrode.	Unlikely	Not assessed as no heritage features recorded in direct disturbance footprint – no direct impact.				Low Desktop Cultural Heritage Survey (Appendix 13.1) records no heritage features. Sacred Sites clearance are pending.	None

⁴ The residual impact is anticipated to be reduced to 'none' once the HIA is complete; as uncertainty is still low pending the HIA completion, the residual impact is currently 'minor.'

Table 13-7: Summary of EIA results – Culture and heritage factor – Operations

Impact	Location	Likelihood	Scale	Duration	Magnitude	Value rating	Certainty	Residual Impact
Direct or indirect impact to heritage features associated with operations and maintenance activities.	DCS Electrode.	Possible Cultural resource use of proximate recreational and ceremonial areas could be affected by access and changes to hydrological regimes or WQ.	Limited Impacts will be limited to the proximate recreational and ceremonial areas.	Permanent Cultural resource use could be permanently altered.	Minor Access to proximate recreational and ceremonial areas maintained where possible. No changes to hydrological regime or WQ of ephemeral creeks (Table 7-3).	Medium Proximate recreational and ceremonial areas assessed as having high cultural significance to TOs.	High Cultural resource use of proximate recreational and ceremonial areas is recorded.	Moderate
	Powell Creek Electrode.	Unlikely	Not assessed as no additional disturbance proposed during operation and no heritage features recorded in direct disturbance				High No disturbance proposed.	None

13.7 Cumulative Impact Assessment

Section 14.7 of the Draft EIS considers cumulative impacts by assessing potential, residual, cultural and heritage impacts of the Project with residual impacts from other past, present and reasonably foreseeable future projects. The framework used to assess the cumulative impacts of the Project is described in Chapter 3 of the Draft EIS. As no material changes to potential impacts or residual impacts to culture and heritage are proposed in this SEIS, there is limited potential for change to the cumulative impacts assessed in the Draft EIS.

13.8 Conclusion

All project refinements are considered to have the potential to generate a nil, minor or moderate level of residual impact once suitable mitigation measures are implemented; no residual impacts are considered significant. Additionally, no changes in cumulative impacts conclusions are expected resulting from result of the proposed minor refinements.

The Proponent has applied the findings from all reports and surveys to inform its response and continues to conduct targeted engagement and information sessions with the relevant authorities mentioned here to ensure that project outcomes are aligned with expectations and rulings regarding protection of cultural heritage values. The ILUA negotiations, AAPA Authority Certificates and permitting processes under the *Heritage Act 2011* (NT) each provide a framework for compensatory measures where impacts cannot be avoided. The Proponent has committed to these processes. These measures may include detailed recording and/or relocation of sites or other measures determined in consultation with TOs.

Cultural sites are often associated with surface water features such as creeks and waterholes. Although sacred and heritage sites have legislative protection, there have been cases in the NT of inadvertent damage to cultural sites. There are many cultural sites around Darwin Harbour and on Gunn Point which also need to be treated with due care. To mitigate the above, the Proponent commits to working with TOs to develop a CHMP and a Cultural Awareness Framework. As described above, the former, will prescribe site protection and management measures required for each significant site. It will also outline detailed procedures for construction and operations, including 'stop works' procedure for burials, human remains and sites of significance. The plan will also contain agreed impact avoidance measures to ensure that heritage features and/or Sacred Sites are not deliberately or inadvertently removed by the Project's staff or contractors. To support this, staff and contractors will be educated using the project Cultural Learning Framework that includes workshops, information, and resources on aspects of local cultural heritage.

13.9 Submission Response

During the Draft EIS Public Submissions period, DCCEEW, DEPWS, the NTG Heritage Branch, the AAPA and ECNT made comments with respect to culture and heritage. These comments relate to the key themes of heritage assessment process, vibration impacts, maritime heritage, and management measures.

The Proponent's responses to these submissions are provided in Sections 13.9.1.2 to 13.9.5.4.

Additionally, Chapter 3 Stakeholder Engagement and Community and Appendix 3.1 Stakeholder Consultation Report provide further information on stakeholder feedback, including questions regarding culture and heritage.

13.9.1 DCCEEW Submission

13.9.1.1 HIA Documentation

To complement the recommendations on cultural heritage set in Appendix V, W-1, W-2 and X (HIAs), the Department proposes including the following inclusions:

- *Having an archaeologist on site during construction to monitor ground disturbing activities at locations where undetected archaeological materials are likely to be present*
- *Outcropping sedimentary rocks within the project area should be subject to a 100% sample survey, because the Archaeological Predictive Model predicts that this type of sediment contains high likelihood of archaeological materials.*

The Department suggests considering the above recommendations when preparing the CHMP. In Appendix V – HIA – Solar Precinct four separate HIA documents are identified as being included in the HIA components of the EIS. However, only three HIA documents are included (Appendices V, W-1/W-2, and X). For transparency in the accredited assessment process, the Department recommends providing the HIA for OHTL from the Solar Precinct to the Livingstone Chainage Corridor (Chainage 0 to 722) (as per (2) in the list of documents on page 4 of Appendix V) in the Supplementary EIS.

13.9.1.2 Response

The Proponent will develop site specific CHMPs to ensure areas of higher risk are properly considered and construction activity is planned for accordingly. Pre-construction clearance surveys with an archaeologist and cultural managers will also be considered in high-risk areas to reduce the likelihood of unexpected artefacts being encountered. The CHMPs for project sites will also incorporate the flow chart outlining the actions to be taken if unexpected archaeological artefacts are encountered during construction (see Section 13.5.2 above). This approach is considered sufficient to ensure that any unexpected archaeological artefacts found during construction are appropriately treated. It's therefore not considered necessary to have an archaeologist present for all ground disturbance activities in high-risk areas.

The Proponent notes that the HIA for OHTL Chainage 0 to 722 was not provided as part of the Draft EIS and has not been finalised for submission in the SEIS. The Proponent's sub-consultant, Earthsea, has compiled a desktop heritage survey database from which notable heritage features are discussed above. The full desktop heritage survey database is provided at Appendix 13.1.

In relation to the Archaeological Predictive Model, the CHMP for specific project sites will ensure that any disturbed outcropping sedimentary rocks are subject to a 100% sample size, or a sample size deemed sufficient on advice from an archaeologist.

13.9.2 Vibration Impacts

The Department recommends assessing the possible impacts of vibration caused by construction and operation of the project (Solar Precinct, OHTL, and Subsea Cable System) near archaeological and cultural heritage sites, particularly on historic structures, World War II infrastructure, rock outcroppings potentially containing archaeological material, possible unexploded ordnance, and submerged cultural landscapes.

13.9.2.1 Response

Potential construction and operational vibration impacts across the Project footprint, including for terrestrial and underwater activity, are discussed in Chapter 14. Mitigation measures are presented and will be incorporated as part of the site-specific CEMPs and CHMPs.

13.9.3 DCCEEW Submission

13.9.3.1 OHTL Effects at Black Jungle

The overhead power lines in Black Jungle may affect: Undefined Aboriginal cultural values and Sacred Sites.

13.9.3.2 Response

The Proponent will continue to engage with Wulna people to ensure project activities in the Black Jungle Conservation Reserve do not jeopardise areas of cultural significance. The OHTL infrastructure is proposed to remain within the utilities corridor which is identified and documented in the Black Jungle Conservation Reserve joint management plan, and the associated ILUA. The Proponent has also applied for an AAPA Certificate which covers the Black Jungle area and will serve as the guiding document to ensure Sacred Sites are not adversely impacted. Consultations indicated strong cultural interests in this area and the Proponent is committed to working with the NLC and AAPA to coordinate culturally appropriate outcomes across the Project footprint. This process will provide a mechanism to ensure that Sacred Sites are well understood, and necessary protection measures are incorporated during the construction phase.

The Constraints Planning and Field Development Procedure at Appendix 4.1 will guide the approach to ecologically and culturally sensitive areas with additional mitigation measures to be included in the corresponding CEMP and CHMP. This approach will ensure appropriate protection is provided for all Sacred Sites including Black Jungle.

13.9.4 Heritage Branch Submission

The Heritage Branch made several statements in support of the heritage assessment work undertaken by the Proponent to date.

These are the main points of interest for Heritage Branch in relation to this project, for the time being. We await further information in the form of reports about maritime surveys and other areas that have yet to be completed. We are satisfied that all heritage and archaeological issues are being addressed.

13.9.4.1 Ongoing Consultation

Heritage Branch has been in regular contact directly with the archaeological consultants for this project and have been monitoring the progress made in terms of archaeological and other cultural heritage surveys. So far, the archaeological consultants have consulted with TOs and custodians for all areas that have been surveyed and that will continue for other areas that are yet to be surveyed, for various reasons.

13.9.4.2 Response

The Proponent's operations and engagements are based on complete transparency and the Heritage Branch's due diligence in guiding and informing the Proponent is welcomed. The Proponent has ongoing dialogue with NTG's Heritage Branch and is aware of the obligations under the Heritage Act.

13.9.4.3 Cultural Heritage Risk Areas

There are a number of 'Cultural Heritage Risk Areas' that have been identified in parts of the proposal footprint that will require further definition and which will be surveyed prior to commencement of works and site protection measures will also be included in the CHMP. Heritage Branch approves of the recommendation to implement a CHMP, and it is noted that Sun Cable have agreed to the implementation of a CHMP.

13.9.4.4 Response

The Proponent's subconsultant, Earthsea developed survey methodology based on the Desktop Heritage Survey at Appendix 13.1. Field surveys were then undertaken over several weeks in 2022 in the OHTL Corridor from KP 0 up to approximately KP 368. The survey report is in preparation and the Proponent commits to providing the report to the NT EPA and NTG's Heritage Branch once it is available.

The CHMP framework and subsequent management and mitigation measures that will be implemented for cultural heritage items within the Project footprint are based on:

- Anticipated impacts to heritage items
- Assessed scientific (archaeological) significance, and (where known) overall heritage significance
- Legislative requirements and the planning approval framework
- Recommendations in previous archaeological survey reports
- Heritage best practice in accordance with the principles of The Australia ICIMOS
- Charter for Places of Cultural Significance, 2013 (The Burra Charter).

This CHMP framework will describe the protection measures and procedures to be implemented for the management and mitigation of impacts on known, and yet unknown, historic, and Aboriginal cultural heritage items (sites, places or objects) during the construction, operation and decommissioning phases of the Project.

During the Project, it is possible that unexpected historic or cultural heritage items or human skeletal remains may be discovered. Unexpected finds and human remain procedures will apply across the project footprint. Explanations of these procedures will be included in the site induction, which will be compulsory for all team members interacting with, or entering, Sacred Sites.

In order to maintain an effective consultation process, a Stakeholder Engagement Strategy will be developed and implemented to keep stakeholders informed about the implementation of the CHMP and the potential impacts of the Project on historic and cultural heritage. Consultation will be ongoing for the life of the Project. The CHMPs will be developed in consultation with Indigenous stakeholders and TOs prior to their adoption. Work approval applications for archaeological mitigation, or permission to disturb Aboriginal archaeological places and objects within the project footprint, will be submitted.

The proposed CHMP Framework is provided in Section 13.5.1 including the flow design for managing discoveries within the project footprint.

13.9.4.5 Marine Heritage Surveys

I understand that the maritime surveys as part of the proposed subsea cable route are to commence in June/July 2022, and that there is some flexibility in the final route selection to avoid direct impact to any subsea heritage features that may be discovered during surveys.

13.9.4.6 Response

The Proponent is aware of the potential impacts to subsea heritage and continues to assess the Subsea Cable Route in accordance with the results of studies undertaken which will inform the final decision.

The Heritage Branch in relation to this project, has expressed that "for the time being they will await further information in the form of reports about maritime surveys and other areas that have yet to be

completed. They reiterate that they are satisfied that all heritage and archaeological issues are being addressed in the current phase.”

The Proponent confirms a commitment to observe underwater cultural heritage and acknowledges responsibility for applying data from new surveys to observe and protect artefacts such as shipwrecks (some known to be more than 75 years old).

The selected Sub Sea Cable Route B in the original EIS has been mapped against known seagrass and other data points and a desktop maritime assessment with new survey data is being prepared by Earthsea. The marine survey by the Proponent’s subconsultant, Guardian Geomatics, was completed in October 2022. This has not been made available in time for the SEIS submission however, the draft reports are being used to inform the CHMP. A number of mitigation measures will be identified based on the type of site, site features, extent of impact (direct or indirect) and the significance of the site.

13.9.5 AAPA Submission

13.9.5.1 New Areas Subject to Authority Certificates

The Authority expects to receive further Authority Certificate applications for proposed electrodes and potentially for some areas near the railway line where the overhead cable is likely to divert away from the railway corridor. The Authority has ongoing regular engagement with Sun Cable Pty Ltd in regard to proposed activities and Authority Certificate applications.

13.9.5.2 Response

The Proponent continues to engage with AAPA regarding all project components and will submit additional applications that provide for the diversion relating to the Electrodes as needed. The selection of route options will be informed by consideration of technical (e.g., constructability), cost, environmental and social factors and informed by consultation with relevant stakeholders. As always, the Authority Certificate and NLC-led consultations will be used as the guides for protecting Sacred Sites.

13.9.5.3 Authority Certificate Applications

The Draft EIS implies that the mitigation measure for direct impacts to sacred sites is to comply with conditions of Authority Certificates. The Authority concurs with this, assuming that all activities associated with the proposal are addressed in Authority Certificates. If adequate supporting information is provided with the Authority Certificate applications, indirect impacts to sacred sites will also be accounted for in Authority Certificates.

13.9.5.4 Response

The *NT Aboriginal Sacred Sites Act 1989* (NT) protects sites that are ‘sacred and otherwise of significance in the Aboriginal Tradition’ following the definition contained in the *Aboriginal Land Rights (NT) Act 1976* (Cwth). Sacred Sites are protected whether the location of the sites are known or not, by any person or company seeking to do work on lands. The Proponent’s applications to AAPA to secure certificates contain full supporting documentation and are based on the identified project activities that are required in the specific areas. There are currently 12 Authority Certificate applications in progress in relation to the protection of Sacred Sites within the project footprint.

13.9.6 ECNT Submission

13.9.6.1 Lake Woods

Chapter 14 states that “As there were no archaeological materials present, archaeological significance assessment was not undertaken.” ECNT notes that the appendix acknowledges that “[t]o date no Pleistocene occupational areas have been recorded in the surrounding region however some potential has been noted at Lake Woods”, and as such recommends further investigation of the potential archaeological significance of the solar precinct area. ECNT does not believe that the proponent has engaged with the “Newcastle Waters Region: Community Report” (2019) by the Centre of Australian Biodiversity and Heritage. In this report it is noted that there are times in the past that Lake Woods was much larger than present, indicated by the presence of old shoreline ridges. The historical spatial expanse of Lake Woods contains much historical and cultural evidence, and is highly valuable for scientific, archaeological, and climatic studies. Archaeological investigations that commenced in 2019 within this historic shoreline by the Centre of Excellence for Australian Biodiversity and Heritage indicate that potentially thousands of undocumented heritage sites are located within the catchment of Lake Woods (CABAH, 2019). It may be the case that a full archaeological survey needs to be undertaken prior to approval or construction; this possibility should be investigated.

13.9.6.2 Response

The Proponent is aware of the findings of the Newcastle Waters Region: Community Report (2019) by the Centre of Australian Biodiversity and Heritage and intends to understand and address the impacts in accordance with the risk criteria pertaining to cultural heritage. This will be managed respectfully and competently through the NLC, archaeologists and cultural managers to ensure that these cultural values are taken into consideration. The Solar Precinct is approximately 10 km south south-west from Lake Woods and the Proponent will apply expert advice from Earthsea to address any concerns regarding cultural heritage and archaeological impacts.

13.10 NT EPA Direction Responses

13.10.1 Heritage Impacts – Comment 38

The Heritage Branch submission identified that the draft EIS and Appendices V-X are very thorough and detailed.

The proponent is compiling reports containing further information about maritime surveys and other areas that have yet to be completed in consultation with Heritage Branch.

The draft EIS has identified that measures for managing the inadvertent discovery of heritage features will be provided in relevant CHMPs. Table 14-12 mentions that, “where further impacts to archaeological heritage features are unavoidable, obtain an approval to carry out work on a heritage place or object (work) under the Heritage Act.”

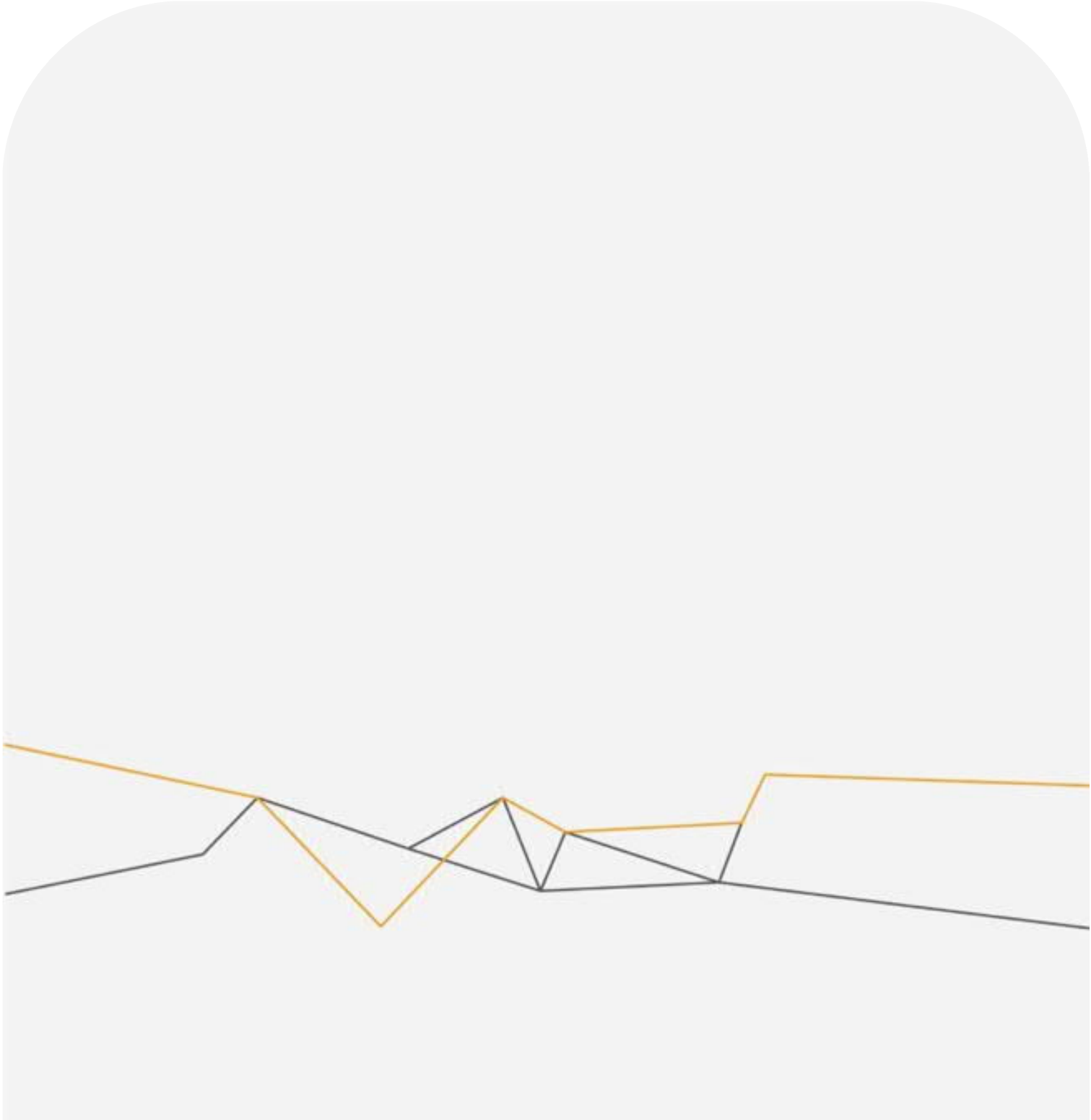
Should changes to the proposed works result in a direct impact to heritage items where currently an indirect impact is identified or have an impact on heritage items where currently no impact is identified, additional mitigation measures will be undertaken.

13.10.2 Information Required in the Supplement

Provide further information about methods to avoid or minimise impacts to heritages sites and objects, including maritime including, but not limited to justification for not changing the OHTL or subsea cable route in accordance with the environmental decision-making hierarchy for undetected heritage features.

13.10.3 Response

The Proponent will be guided by the CHMP decision flowchart to ensure that heritage features, if discovered via a change to the route, will be managed in accordance with best practice standards and in line with stakeholder expectations. Should changes to the proposed works result in a direct impact to heritage items where currently an indirect impact is identified or have an impact on heritage items where currently no impact is identified, additional mitigation measures will be undertaken.



Singapore

61 Robinson Road
#09-04
Singapore 068893

Jakarta

The South Quarter Building, Tower C,
Mezzanine Level, Jl RA Kartini Kav 8,
Cilandak, Jakarta Selatan 12430

Darwin

Suite 3, Level 17
19 The Mall
Darwin NT 0800

Sydney

Level 31,
85 Castlereagh Street
Sydney NSW 2000

Brisbane

Level 3,
900 Ann Street
Fortitude Valley QLD 4006