

# Core Lithium Ltd Finniss Lithium Project Stakeholder Engagement Report

Prepared by True North Strategic Communication  
August 2020

Version No.	Issue Date	Prepared by:	Approved by:	Approval Date
V1	11 August 2020	Claire Butler		
V2	25 August 2020	Claire Butler		
V3				

*Recipients are responsible for eliminating all superseded documents in their possession*

#### **Consultation statement**

True North Strategic Communication is guided by the principles of good community engagement, based on people's level of interest and concern as outlined by the International Association for Public Participation (IAP2).

Our role is to provide stakeholders and the general public with objective information, so they can provide informed feedback on consultation projects. We give people the opportunity to provide input that is balanced and reflective of the range of community views to independently provide the best possible guidance to decision makers.

Our practice reflects professional standards and ethical standards for human research including anonymity, confidentiality, record storage and keeping people informed.

## Table of Contents

<b>Executive Summary .....</b>	<b>1</b>
<b>Methodology.....</b>	<b>2</b>
<b>Consultation objectives .....</b>	<b>2</b>
<b>Communication objectives .....</b>	<b>2</b>
<b>Approach.....</b>	<b>2</b>
<b>Tools and tactics .....</b>	<b>3</b>
<b>Stakeholder briefing content .....</b>	<b>3</b>
<b>Stakeholders .....</b>	<b>4</b>
<b>Key Themes Raised.....</b>	<b>7</b>
<b>Dust.....</b>	<b>7</b>
<b>Rehabilitation and closure .....</b>	<b>8</b>
<b>Ongoing communication with the community .....</b>	<b>8</b>
<b>Water use and discharge .....</b>	<b>8</b>
<b>Indigenous employment and contracting opportunities.....</b>	<b>7</b>
<b>Local employment and contracting opportunities.....</b>	<b>7</b>
<b>Consultation activity .....</b>	<b>9</b>
<b>Appendices .....</b>	<b>11</b>

## Executive Summary

Core Lithium plans to expand its mining and processing activities as part of its Finniss Lithium Project in the Cox Peninsula region of the Northern Territory. On 30 April 2020, Core Lithium submitted a Notice of Intent to the Northern Territory Environment Protection Authority (NTEPA) for the proposed BP33 project.

Core Lithium engaged True North Strategic Communication to prepare and implement a stakeholder engagement strategy for the BP33 stakeholder engagement process. This strategy outlined the key stakeholders and a recommended approach for engagement. This strategy built on the previous and ongoing stakeholder engagement for the Grants project. The input and feedback from stakeholders will inform any future communication and engagement activity.

In July the Northern Territory Government advised that the BP33 Notice of Intent would be the first project to be assessed under the newly reformed environmental legislation, the *Environment Protection Act 2019*.

On 10 July 2020, the BP33 project was advertised on the NT EPA website as open for public comment, with information on the proposal, including all relevant referral documents. The public comment period was open from 10 July 2020 to 10 August 2020.

As part of the environmental assessment process and in line with the recommended approach for stakeholder engagement, Core Lithium engaged with stakeholders to provide information on Core's proposed BP33 project, listen to any feedback and took the opportunity to update stakeholders on the Grants project.

The communication and engagement activity for the BP33 project included:

- an email sent to stakeholders with the project fact sheet, advising that the project was open for public comment on the NT EPA website, and inviting stakeholders to attend a briefing, provide feedback or contact True North or Core Lithium for more information
- arranging and attending 10 project briefings, where stakeholders were provided with an online presentation on the project and invited to provide feedback or ask questions.

This report outlines the methodology, the stakeholders contacted and briefed on the project, the tools and information provided to stakeholders, a discussion of the key themes raised and a summary of stakeholder discussions.

## Methodology

Using the International Association for Public Participation (IAP2) principles that guide good community engagement, this consultation was conducted at the levels of **inform, consult and involve**.

Level of engagement	Promise to the public
<i>Inform</i>	<i>We will keep you informed</i>
<i>Consult</i>	<i>We will listen to your concerns, keep you informed, and provide feedback on how stakeholder's input influenced the decision</i>
<i>Involve</i>	<i>We will work with you to ensure your concerns are reflected in the alternatives developed, and provide feedback on how the public's input influenced the decision</i>
<b>Collaborate</b>	We will look to you for advice, ideas and solutions and incorporate those into the decisions as much as possible
<b>Empower</b>	We will implement what you decide

©International Association of Public Participation [www.iap2.org](http://www.iap2.org)

### Consultation objectives

The consultation objectives of this stakeholder engagement strategy were:

- to listen to and understand the priorities and perspectives of all stakeholder groups
- to manage stakeholder expectations
- provide clarity and information on any issues of concern raised by stakeholders
- to support delivery of projects that are environmentally, economically, culturally and socially acceptable to the community and key stakeholders (ie earn social licence to operate)
- to provide regulators with confidence that all positive and negative impacts are well understood and can be managed through all phases of the project
- to provide guidance to the company's long-term social performance.

### Communication objectives

The communication objectives of this stakeholder engagement strategy were to:

- inform stakeholders of the BP33 Project and details
- notify stakeholders that a Notice of Intent or Referral had been submitted for BP33
- update stakeholders on progress of the Grants Project since the previous consultation
- encourage stakeholders to provide feedback as part of the public feedback process
- continue to build on existing stakeholder relationships and trust
- provide clarity and understanding about the various Core projects in the region.

### Approach

The approach to the stakeholder communication and engagement was to:

- ensure a tailored approach to reaching stakeholders, for example phone calls, emails, phone/online meetings and online presentations
- draw on feedback raised in previous consultation to help guide key messages and areas of focus for stakeholder meetings
- refer to previous stakeholder information requests to ensure all interested stakeholders are updated on the projects
- ensure key stakeholders receive objective information direct from Core rather than from media or third parties

- continue to build relationships and make sure it is easy to contact the company to clarify issues and address rumours and misinformation
- give key stakeholders a chance to provide early input on issues that may affect them or project design and provide regular updates to these stakeholders
- a risk-based approach that devotes the greatest effort to stakeholders likely to experience the greatest level of impact – positive or negative – from the project, while raising awareness of all stakeholders in the project footprint on how they can get information and provide feedback.

The approach focused on briefing priority stakeholder representative groups on the project, seeking their support to share information about the project with their members and communities and providing information on the project to other stakeholders. Stakeholders were invited to contact either True North or Core Lithium to provide feedback or to ask any questions about the BP33 or Grants projects.

### Tools and tactics

An **email** and **factsheet** (see Appendix A: Fact sheet) were sent out to stakeholders from 8 July 2020 to provide background information about the project and the engagement process.

Priority stakeholders were invited to attend an **online briefing** by Core. Some stakeholders were offered an online briefing if they would like more information, and others were invited to contact Core or True North if they had feedback or questions. A number of stakeholder groups were invited to share the fact sheet with their members and communities to ensure people were informed of the project and had the opportunity to provide feedback or seek more information.

Online briefings rather than face-to-face briefings were arranged due to the social distancing guidelines associated with COVID-19. These online briefings were via Zoom and Microsoft Teams, depending on stakeholder preference. During these briefings, Blair Duncan, Chief Operating Officer at Core Lithium took stakeholders through an **online presentation** (see Appendix B: Online presentation) that outlined the BP33 project, updates on the Grants project and provided some overall information on Core's activity in the Cox Peninsula area. Stakeholders were invited to ask questions throughout the presentation and to provide any comments or feedback. A representative from True North attended all briefings to take notes.

### Stakeholder briefing content

Key points outlined in the stakeholder presentation were:

- overview of Grants and BP33 projects and project location
- BP33 project:
  - preliminary mine design and layout, including maps
  - water use and resources
  - environmental management – weed management, waste rock dumps, water discharge
  - rehabilitation and closure
  - timeframes
- Grants project:
  - approvals
  - timeframes
- employment
- Indigenous participation
- traffic and safety.

## Stakeholders

Targeted stakeholder groups were:

- relevant Northern Territory Government departments
- local government including Belyuen Community Government Council, Wagait Shire Council, Litchfield Shire Council
- relevant Indigenous groups including Larrakia Nation, Kenbi Rangers, Larrakia Development Corporation, IWMRA, Ironbark Aboriginal Corporation
- local elected representatives
- local industry associations including Chamber of Commerce, Minerals Council NT
- non-government organisations, including the Environment Centre NT
- representatives of affected communities
- stakeholders who have requested to be kept informed of project updates.

A summary of the organisations that were contacted, sent a fact sheet and briefed is provided below:

Organisation	Sent email and fact sheet	Briefed
<b>Northern Territory Government</b>		
Department of Primary Industry and Resources	✓	✓
Department of Environment and Natural Resources	✓	
Department of Infrastructure, Planning and Logistics	✓	✓
Department of Trade, Business and Innovation	✓	✓
Department of Education	✓	
Berry Springs Primary School	✓	✓
Department of Tourism, Sport and Culture	✓	
Power and Water	✓	✓
NT Police, Fire and Emergency Services	✓	
Bushfires NT	✓	
Daly electorate office	✓	
<b>Local government</b>		
Belyuen Community Government Council	✓	
Litchfield Shire Council	✓	
Wagait Shire Council	✓	✓
City of Palmerston	✓	
<b>Indigenous groups</b>		
Larrakia Development Corporation	✓	✓
Larrakia Nation Aboriginal Corporation	✓	
Ironbark Aboriginal Corporation	✓	

Kenbi Rangers	✓	
Indigenous Women in Mining Resources Association (IWMRA)	✓	
<b>Environment and community groups</b>		
Environment Centre of the NT	✓	✓
Amateur Fisherman's Association NT (AFANT)	✓	
Wagait Beach Progress Association	✓	
Rural Residents Rights Group	✓	
Dundee Progress Association	✓	
<b>Business and Industry Associations</b>		
Chamber of Commerce	✓	✓
Minerals Council of Australia, NT Division	✓	✓
Tourism Top End	✓	
NT Guided Fishing Industry Association	✓	
Palmerston Regional Business Association	✓	
<b>Community members</b>		
Community members from previous stakeholder engagement	✓	
Wagait Watch	✓	
Berry Springs Shopping Village	✓	
Dundee Beach Holiday Park	✓	
Sandpalms Resort and Tropical Motel	✓	
Dundee Social and Recreational Club	✓	
Cox Country Club	✓	
Wagait Beach Supermarket	✓	
Territory Wildlife Park	✓	
<b>Australian Government representatives</b>		
Member for Lingiari	✓	
Member for Solomon	✓	

Stakeholders were invited to share the fact sheet with their constituents, members, employees and general community members.

A total of 10 online briefings were conducted with key stakeholders. A number of stakeholders either declined the offer of an online briefing or did not respond to the offer. These included:

- Litchfield Shire Council
- Department of Environment and Natural Resources – Water Resources
- Department of Education
- Tourism Top End

- Kenbi Rangers
- NT Guided Fishing Industry Association
- Belyuen Community Government Council
- Larrakia Nation.

## Key Themes Raised

The response and feedback from the online briefings was generally positive, with stakeholders appreciative of the information about the projects and Core’s ongoing stakeholder consultation. Many were positive about the opportunities for local employment and local contracts, Indigenous engagement and investment in the local economy. The key themes raised in the briefings are outlined in the diagram below, starting with the most frequently raised topic. Core’s presentation covered most of these topics, with stakeholders often asking questions in response to the presentation.

The most frequently raised topic was local employment and contracting opportunities, followed by Indigenous employment and contracting opportunities. Several stakeholders asked about Core’s ongoing communication with the community. There was interest in the topic of rehabilitation and closure, and water use and discharge. Although dust was only raised by one stakeholder, they indicated it had previously been raised by a number of community members, so is likely to be of interest to the surrounding community.



*Themes raised during briefings*

### Local employment and contracting opportunities

There was a lot of interest about employment and contracting opportunities for locals. People were pleased that Core is committed to local employment and that the longer mine life at Grants could encourage those in specialist roles to relocate to the region. Some stakeholders indicated that locals in the communities nearby would be interested in jobs at the projects.

### Indigenous employment and contracting opportunities

A number of Indigenous stakeholder representatives indicated their interest in securing contracts with Core and asked about Core’s commitment to Indigenous employment and content. Core outlined the ongoing communication with local Indigenous stakeholders and the company’s commitment to Indigenous content. Core advised that the company will know more about the job and contract requirements after the final investment decision and they will discuss opportunities with Indigenous stakeholders once this information is known.

### Ongoing communication with the community

Some stakeholders questioned when Core would be providing information to the wider community about the projects. This question stems from interest about job and contract opportunities. Core advised that until the final investment decision, it is too early to be making any announcements to the community about job and contract opportunities and making any firm commitments.

### Rehabilitation and closure

Stakeholders were pleased to hear that the BP33 mine would be backfilled. They asked how long the rehabilitation process takes, the timeframes for ongoing monitoring and what will happen with the mining infrastructure on site. Core advised that all mining infrastructure will be removed from the site on project closure and outlined the timeframes for rehabilitation, closure and monitoring. Due to the issues surrounding legacy mines in the Northern Territory, this is likely to be an ongoing topic of interest.

### Water use and discharge

Most stakeholders are aware that water availability is an issue in the Cox Peninsula area but were reassured that Core would not be using water from the Berry Springs Dolostone Aquifer and that Core's water use would not impact water availability for surrounding residents. Core advised that ground water from the underground mine at BP33 would be used and recirculated at BP33.

Core's presentation outlined information about water discharge from Grants and BP33 and the requirement for water discharge licences. One stakeholder asked where the water would flow and if the discharge water would contain chemicals from mining or processing. Core advised that no processing water from Grants would be returned to Observation Hill Dam or used at BP33 and that the discharge licences were for Observation Hill Dam and for rainfall events.

### Dust

Wagait Shire Council was the only stakeholder that raised questions about the possibility of dust affecting nearby communities and residents, due to community members raising this issue during previous consultation about the Grants project. Wagait Shire Council asked about air quality monitoring and dust suppression activities during mining, processing, transportation of materials and at the tailings storage area. Core provided information about the likelihood of dust during the various stages of mining, processing, storage and transportation and advised about air quality monitoring and dust suppression. Core also outlined that it will share ongoing air quality monitoring results with the community, and will consult with the community on Core's performance in this area. This is likely to be a topic of interest or concern from any nearby residents or communities and will require ongoing communication and engagement.

## Public feedback

Two public submissions were received by the NT EPA as part of the public consultation process.

The Environment Centre NT acknowledged Core's ongoing consultation and transparency on the projects and welcomed the intention to backfill the BP33 project. The key issues raised were:

- the piecemeal approach to development of Core's projects on the Cox Peninsula and the resulting difficulty assessing cumulative impacts
- that the Environment Centre NT believes the BP33 project should be assessed under the Environmental Impact Statement (EIS) process to adequately assess the impacts of the project
- impacts on groundwater and surface water

- the need for waste rock characterisation
- the need for a threatened species survey
- requirements for community consultation with Belyuen community
- renewable energy should be used for BP33
- economic viability of the project and the risk of early closure of the project.

The other public submission raised a range of questions about matters outlined in the referral documents. This included questions or comments about 27 items in the referral, including impacts on flora and fauna, human health, surface water, water discharge, transportation of materials, water use and treatment, erosion and others.

## Consultation activity

Stakeholder	Summary of Feedback
<p>Department of Primary Industry and Resources</p> <ul style="list-style-type: none"> <li>• Ian Scrimgeour, A/Executive Director Mines, Executive Director NT Geological Survey</li> </ul>	<ul style="list-style-type: none"> <li>• Asked if the Carlton prospect is on the same mining lease as Grants and if it would be an extension of the Grants approval.</li> <li>• Inquired whether there are other underground lithium mines in Australia.</li> <li>• Indicated that underground is a good outcome from an environmental perspective.</li> <li>• Asked about the mine closure plan and whether it is in progress.</li> <li>• Asked how financing is going for the project.</li> </ul>
<p>Department of Infrastructure, Planning and Logistics – Transport Planning</p> <ul style="list-style-type: none"> <li>• Bruce Michael, Executive Director</li> <li>• Chandan Kalase, Director</li> <li>• Kushan Gunarathne, Transport Planning</li> </ul>	<ul style="list-style-type: none"> <li>• Indicated they will require details on the access route to BP33, more information on the traffic impact assessment for the new timeframes/BP33 and the nature of the vehicles requiring access.</li> <li>• Asked if Core will still commit to previous commitments Core made regarding transportation/roads – Core confirmed these commitments still stand.</li> <li>• Advised that if any issues arise from a transport perspective, they are happy to work through those with Core.</li> </ul>
<p>Department of Trade, Business and Innovation</p> <ul style="list-style-type: none"> <li>• Karen Lo-Lai, Commercial Facilitation Director – Major Projects and Minerals</li> </ul>	<ul style="list-style-type: none"> <li>• Asked if the Mine Management Plans were approved for both Grants and BP33.</li> <li>• Interested to know when the Carlton project would start.</li> <li>• Asked about the operational expenditure for BP33.</li> <li>• Inquired about the amount of water BP33 would require.</li> <li>• Inquired if the construction workforce of 60 that was outlined in the NOI is still the same.</li> <li>• Asked about the Indigenous training and workforce opportunities.</li> <li>• Asked if AFANT is included on the list of stakeholders to be briefed.</li> <li>• Advised they can provide data or training information on Indigenous people if Core needs this information.</li> <li>• Advised that they are happy to arrange any connections with other government departments or stakeholders.</li> </ul>
<p>Berry Springs Primary School</p>	<ul style="list-style-type: none"> <li>• Aware that water availability is an issue for many in the area.</li> <li>• Interested in the timeframes for post-closure monitoring.</li> <li>• Asked if she can share the fact sheet and brief the school council, which Core supported.</li> </ul>

<ul style="list-style-type: none"> <li>• Carlie Mamo, Acting Principal</li> </ul>	<ul style="list-style-type: none"> <li>• Interested in Core providing maps and materials that can be used to teach students about the projects. Will advise Core what materials they would like.</li> </ul>
<p>Power and Water</p> <ul style="list-style-type: none"> <li>• Anthony Greenwood, Manager Power Engineering, Power Services,</li> <li>• Shaun De Zylva</li> <li>• Michael Murtagh</li> </ul>	<ul style="list-style-type: none"> <li>• Asked for confirmation of the sites requiring grid connection.</li> <li>• Discussed Core’s power requirements for the Grants and BP33 projects.</li> <li>• Indicated that network disruptions are not uncommon and that Core should plan for this.</li> <li>• Advised that Power and Water could provide power along the road corridor and Core could distribute power onsite from there.</li> <li>• Indicated they would need more information on exactly what Core’s requirements are and that they are happy to work directly with Core if that is how Core would like to proceed.</li> </ul>
<p>Wagait Shire Council</p> <ul style="list-style-type: none"> <li>• Renita Glencross, CEO</li> <li>• Neil White, Councillor and President</li> </ul>	<ul style="list-style-type: none"> <li>• Asked about the blasting and mining process.</li> <li>• Asked which site, Grants or BP33, is 10 km from the closest residential property.</li> <li>• Asked how long the rehabilitation process would take and the timeframes for this.</li> <li>• Advised that one of the main community concerns is around dust becoming airborne and drifting across to Wagait. Asked about air quality monitoring and dust suppression. Asked if the mined material would be left sitting in stockpiles awaiting processing and if that could create dust. Inquired if the tailings dam is kept wet and if materials are transported wet.</li> <li>• Indicated that there is a community of 400 people at Wagait and wanted to know if local workers will be working on the project.</li> <li>• Asked if Carlton is within the existing mineral lease.</li> <li>• Indicated that this is a worthwhile project with positive employment and economic opportunities.</li> <li>• Advised they would share the project information and fact sheet.</li> </ul>
<p>Larrakia Development Corporation</p> <ul style="list-style-type: none"> <li>• Nigel Browne, CEO</li> </ul>	<ul style="list-style-type: none"> <li>• Interested to know if Core is likely to get a final investment decision by the end of this year.</li> <li>• Asked if there are other mines like this in the Northern Territory.</li> <li>• Discussed water issues on the Cox Peninsula and indicated water availability and access could be an issue for Core.</li> <li>• Particularly interested in contract opportunities for LDC and understanding what those opportunities might be.</li> <li>• Asked what the minimum Indigenous requirements are that the Northern Territory Government has stipulated for the project.</li> <li>• Advised that LDC’s experience has been that if the proponent doesn’t set the ground rules for Indigenous participation then there is little or no commitment by contractors to implement.</li> <li>• Advised they would send LDC’s capability statement to Core.</li> <li>• Want to know solid timeframes and project opportunities for Larrakia people. Would like to keep in touch when you start awarding contracts.</li> </ul>
<p>Environment Centre of the NT</p> <ul style="list-style-type: none"> <li>• Shar Molloy, Director</li> </ul>	<ul style="list-style-type: none"> <li>• Sought clarification that Grants is not changing from an open pit to an underground mine.</li> <li>• Inquired if Core had given further consideration to power generation.</li> <li>• Indicated that backfilling of BP33 is a good outcome.</li> <li>• Asked about the water discharge, where it would flow to, where at the sites the water would be coming from and what minerals/chemicals</li> </ul>

	<p>might be in the discharge water and asked if there would be any public consultation about the water discharge.</p> <ul style="list-style-type: none"> <li>• Asked about site rehabilitation and what would happen with the mining infrastructure.</li> <li>• Indicated their concerns would always be about mine pits being left open, water use and discharge and that the water discharge licence for Grants will be the biggest concern, particularly for people using the harbour.</li> <li>• Commented that Core has been very open and transparent and thanked them for the briefing and for answering all the questions and said Core is to be congratulated for the way they have engaged.</li> </ul> <p>(A public submission was provided to NT EPA. A summary of the issues raised is outlined in the Public Feedback section in this report).</p>
<p>Chamber of Commerce</p> <ul style="list-style-type: none"> <li>• Greg Ireland, CEO</li> <li>• Kate Morrissey, Manager Industry Councils</li> </ul>	<ul style="list-style-type: none"> <li>• Indicated a longer mine life was positive for local employment and economic opportunities.</li> <li>• Very supportive of the project as it will bring job and economic opportunities to the region and indicated it is likely that most of the members would also be supportive of the project.</li> <li>• Suggested that ongoing communication is important and that members would be interested in hearing an update. Invited Core to provide an update to Chamber members when Core is ready to do this.</li> <li>• Offered assistance if Core needs anything.</li> </ul>
<p>Minerals Council of Australia, NT Division</p> <ul style="list-style-type: none"> <li>• Drew Wagner, Executive Director</li> <li>• Janice Warren, Policy Research Officer</li> </ul>	<ul style="list-style-type: none"> <li>• Drew indicated he would be interested in a site visit if possible, to better understand the location and site.</li> <li>• Very excited about the project and the local prospects and hope it happens within the expected timeframes.</li> <li>• Wanted to know the consultation strategy for the broader community and advised that people don't know about the project or what is happening.</li> </ul>
<p>Belyuen Community Government Council</p> <ul style="list-style-type: none"> <li>• Cathy Winsley, CEO (phone call, no briefing)</li> </ul>	<ul style="list-style-type: none"> <li>• Advised during a phone call about the project that Belyuen is interested in any opportunities to work with Core and advised they are the only place on the peninsula with 24/7 fuel, they have a good workshop with three qualified mechanics that could be used for emergency breakdowns and also have a shop that could be used for any catering or lunches for workers.</li> </ul>
<p>Community member – via email in response to the fact sheet being sent out</p>	<ul style="list-style-type: none"> <li>• Interested in benefits to the local community (Wagait Beach) such as housing or ferry transport.</li> </ul>
<p>Community member – via NT EPA public feedback</p>	<ul style="list-style-type: none"> <li>• Raised a wide range of issues on 27 items in the referral, including impacts on flora and fauna, human health, surface water, water discharge, transportation of materials, water use and treatment, erosion and others.</li> </ul>

## Appendices

Appendix A: Fact sheet

Appendix B: Online presentation

# Finniss Lithium Project

JULY 2020

Core Lithium Limited is an Australian resources company with 100% ownership of the Finniss Lithium Project. The Finniss Lithium Project covers more than 500 square kilometres in the Cox Peninsula area of the Northern Territory and incorporates several high-grade lithium deposits including the Grants Lithium Project, the proposed BP33 Lithium Project and other prospects being explored by Core.

On 1 April 2020 Core received approval from the Northern Territory Government for the Grants Lithium Project.

Further exploration in the area identified additional lithium ore deposits at the BP33 site.

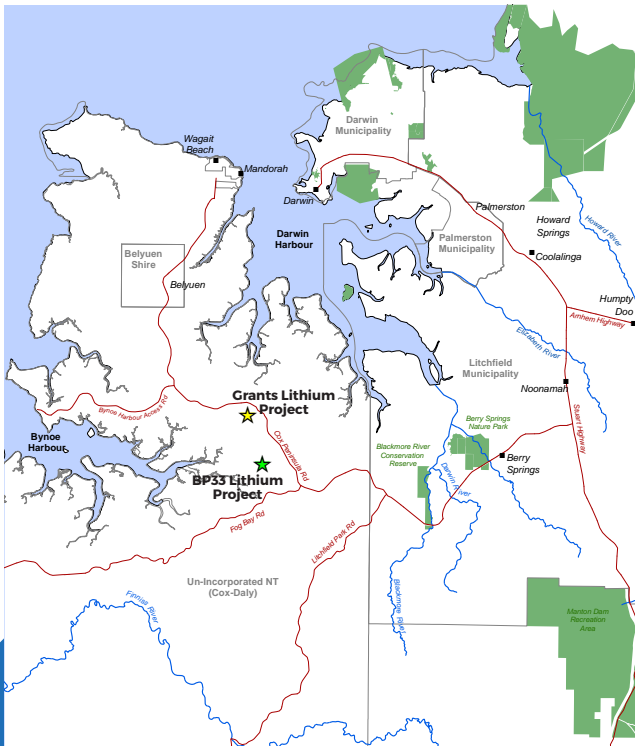
On 30 April 2020 Core submitted a Notice of Intent (NOI) to the Northern Territory Environment Protection Authority (NTEPA) for the BP33 Project.

On 30 April Core submitted a Notice of Variation to the NT EPA for the proposed variations to the Grants Lithium Project.

On 25 June 2020, the NT EPA determined the variations to the Grants Lithium Project do not require further approvals.

Construction for the Grants Lithium Project will start in 2021 and production will start in 2022.

The BP33 Lithium Project is not expected to start until 2023.



## CAPITAL EXPENDITURE

BP33 Lithium Project expected capital expenditure is \$45 million.

The Grants Lithium Project expected capital expenditure is \$73 million during construction.

## EMPLOYMENT

The Grants Lithium Project will generate up to 250 jobs during construction and 250 jobs over seven or more years during the operational phase. This figure includes 50 – 80 jobs on the BP33 Lithium Project.

## BP33 LITHIUM PROJECT

Core Lithium's BP33 site is 33 kilometres west of Berry Springs and 2.5 kilometres south-west of Cox Peninsula Road. The BP33 site contains 2.15 million tonnes of pegmatite, a granite type rock containing spodumene which is a source of lithium. Core is proposing to develop the BP33 site which would involve underground mining of ore and trucking to the Grants Lithium Project processing plant via a 7.5 kilometre purpose-built haul road.

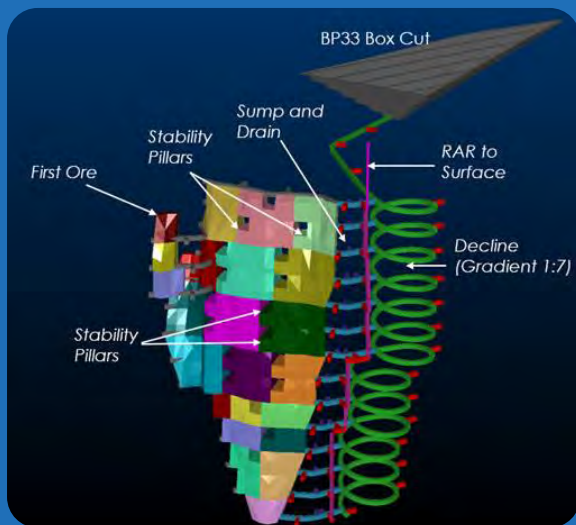


Diagram A - Concept diagram of a box cut portal

### WATER USE

It is estimated that the BP33 Project will require 1047 kilolitres of water per day, with water to be sourced from surface water and, subject to approval, groundwater from the BP33 underground mine. This does not have any connection to the Berry Springs Dolostone aquifer which is subject to the Berry Springs Water Allocation Plan.

### REHABILITATION AND CLOSURE

At completion of the mining activities at BP33, the underground mine and box-cut will be completely backfilled and no waste material will remain on the surface. The project area will be rehabilitated as per the Mine Closure Plan.

### The proposed BP33 Lithium Project would involve

- ✓ Excavating a box-cut portal over six hectares (see Diagram A) to a depth of approximately 60 metres.
- ✓ Initial construction of a 450-metre long decline from the base of the box-cut to the top of the ore deposit and progressive construction of a further 5.4 kilometres over the life of the mine.
- ✓ Two onsite waste rock dumps for temporary storage of waste rock before the material is backfilled.
- ✓ Construction of a dam to store water that will be used to minimise dust and supply the mine site facilities, and construction of a separate dam to store and treat water containing sediment.
- ✓ Construction of site infrastructure, including a contractor's area, internal access roads and drainage infrastructure and Run of Mine (RoM) pad.
- ✓ The contractor's area will accommodate office and staff facilities, laydown and storage areas, a maintenance workshop, fuel storage and refuelling and power generators.
- ✓ Construction of a 7.5 kilometre dedicated haul road over existing tracks between the BP33 site to the Grants Lithium Project site.
- ✓ Underground mining of the resource over approximately four years.
- ✓ Transport of the mined ore approximately 7.5 kilometres along a dedicated haul road to the Grants processing plant.
- ✓ Processing of the mined ore at the Grants Lithium Project site and transporting the concentrate product to the Darwin Port.

## GRANTS LITHIUM PROJECT

On 1 April 2020, Core received approval from the Northern Territory Government for open pit mining and processing of 1.8 million tonnes of lithium ore at its Grants Lithium Project 36 kilometres west of Berry Springs.

Core's proposal to expand its mining activities in the area with an underground mine at the BP33 deposit will extend the life of the operating facility at the Grants Lithium Project to seven or more years. The changes to the Grants Lithium Project as a result of this include:

- ✓ increasing the tailings storage capacity to contain the additional tailings from the BP33 Lithium Project
- ✓ water will continue to be drawn from Observation Hill Dam for the life of the Grants Project
- ✓ extending the life of the mine site dam from three years to seven or more years before closure and rehabilitation
- ✓ extending the timeframe for trucking of ore from Grants Project to Darwin Port from three years to seven or more years
- ✓ extending the schedule for closure and rehabilitation of the Grants Project to seven or more years
- ✓ hiring additional workers to continue operation of the processing facility for an additional four or more years.

Core's intent is that as the Grants ore deposit is exhausted, the BP33 deposit will be developed.

## EMPLOYMENT AND LOCAL CONTENT

Core is committed to employing local workers from Darwin, Palmerston and surrounding areas where possible. There will be no on-site accommodation camp, with workers expected to travel to and from site for each shift.

Core will continue to de-risk the project as it moves towards Final Investment Decision (FID). Interested stakeholders are encouraged to follow the company's progress by subscribing to the notifications on the company website or following progress on the ASX.

## TRAFFIC AND ROAD SAFETY UPDATE

Core consulted with the public in 2017 and 2018 about the Grants Lithium Project and advised that there could be some short, temporary closures of Cox Peninsula Road during blasting at the Grants project site. Core has committed to restricting blasting times and road closures to minimise impacts to road users and will consult with nearby communities about blasting operations and road closures. The BP33 project will not require any road closures.

Core has committed to restricting haul truck speeds to 40km/hr within the Berry Springs school precinct, it will restrict truck movements past the school during peak school traffic periods and truck speed and driver behaviour will be monitored via monitoring systems. Expansion of Core's mining activity on the Cox Peninsula will extend the timeframe for trucking of ore from the Grants Project site to Darwin port from three years to seven or more years.

## CONTACT

P. 0429 444 725  
E. [feedback@truenorthcomm.com.au](mailto:feedback@truenorthcomm.com.au)

OR

For job applications and recruitment, project supplier, engineering or processing queries, please visit the careers section on the Core Lithium website for information.



For all other queries please contact the Core Lithium office on:

P. 08 8317 1700  
E. [info@corelithium.com.au](mailto:info@corelithium.com.au)

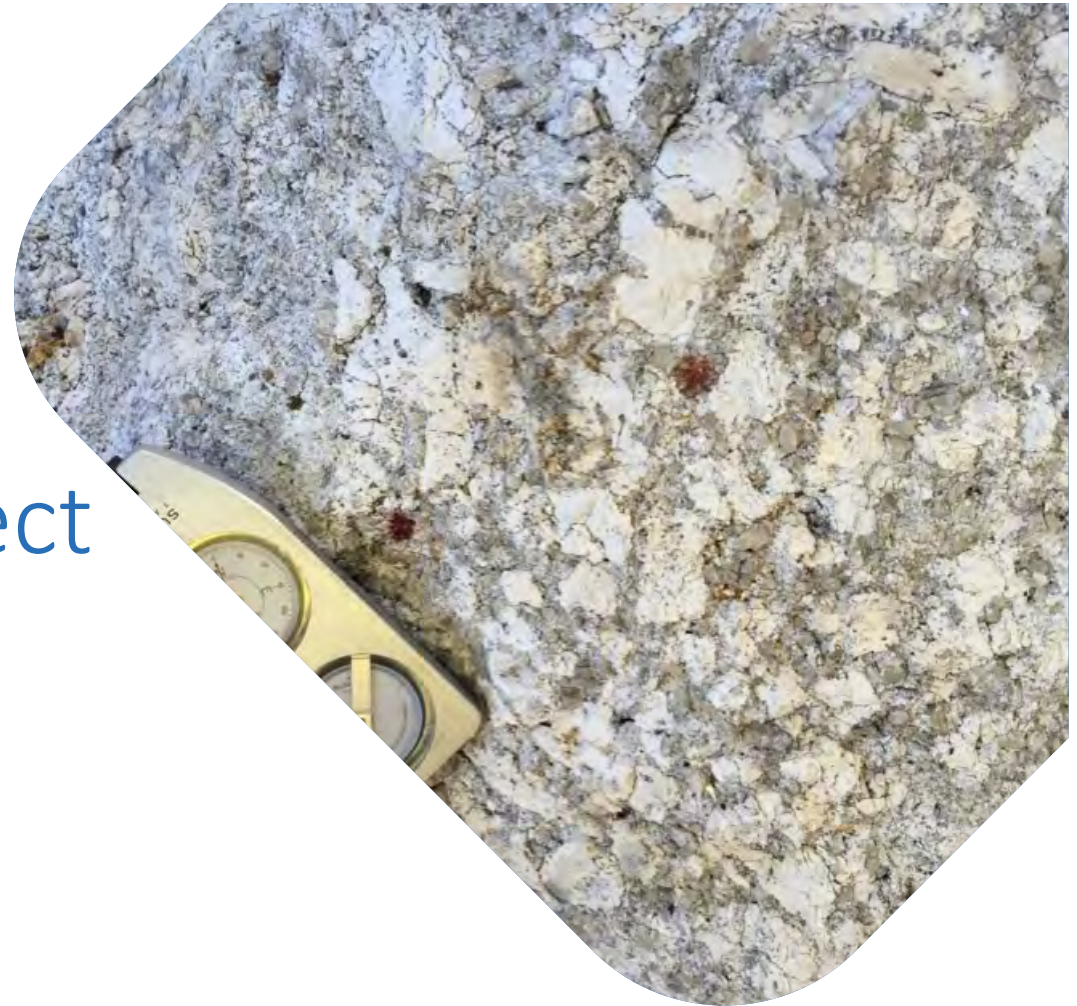
[corelithium.com.au](http://corelithium.com.au)



# Finniss Lithium Project

Briefing

July 2020



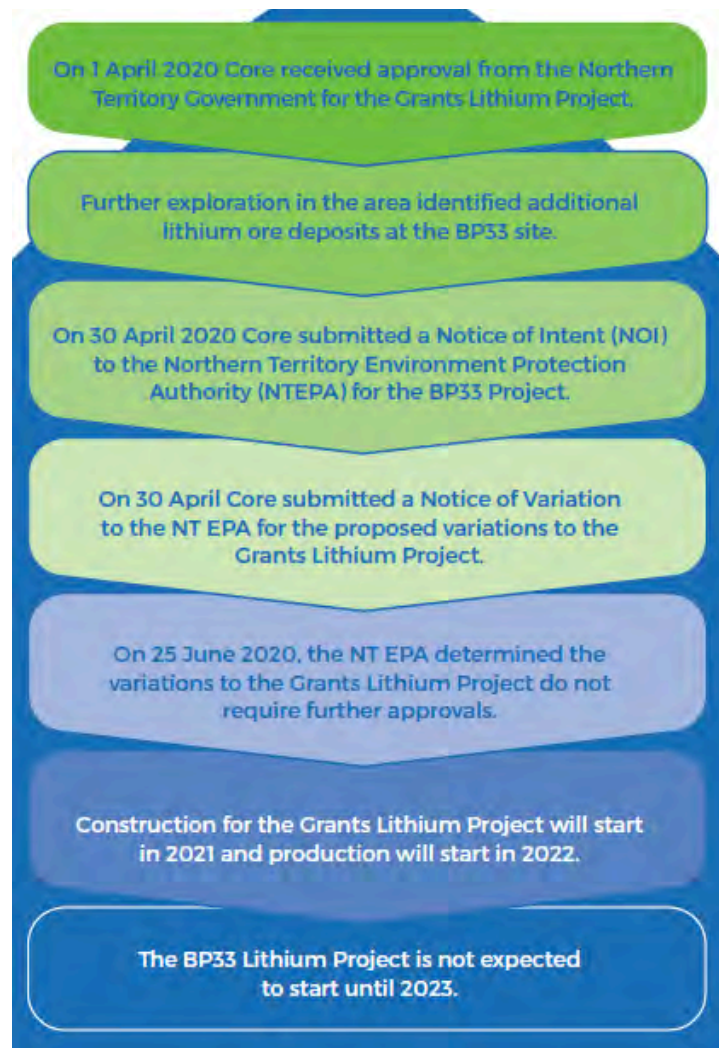
 [corelithium.com.au](http://corelithium.com.au) | ASX CXO

# Overview of projects

- **Finniss Lithium Project**
  - BP33 Project
  - Grants Project
  - Other exploration tenements in the region
- 35 kilometres west of Berry Springs, 32 kilometres south of Darwin
- Core Lithium Limited has 100 per cent ownership of the Finniss Lithium Project
- Land tenure – Vacant Crown Land



# Overview



# BP33 Project

## Overview

### Location

- 33 kilometres west of Berry Springs and 2.5 kilometres south-west of Cox Peninsula

### Resource

- 3.2 million tonnes of pegmatite, a granite type rock containing spodumene which is a source of lithium

### Mining and processing

- Underground mining of the resource over approximately four years
- Ore processed at the Grants processing facility

### Capital Expenditure

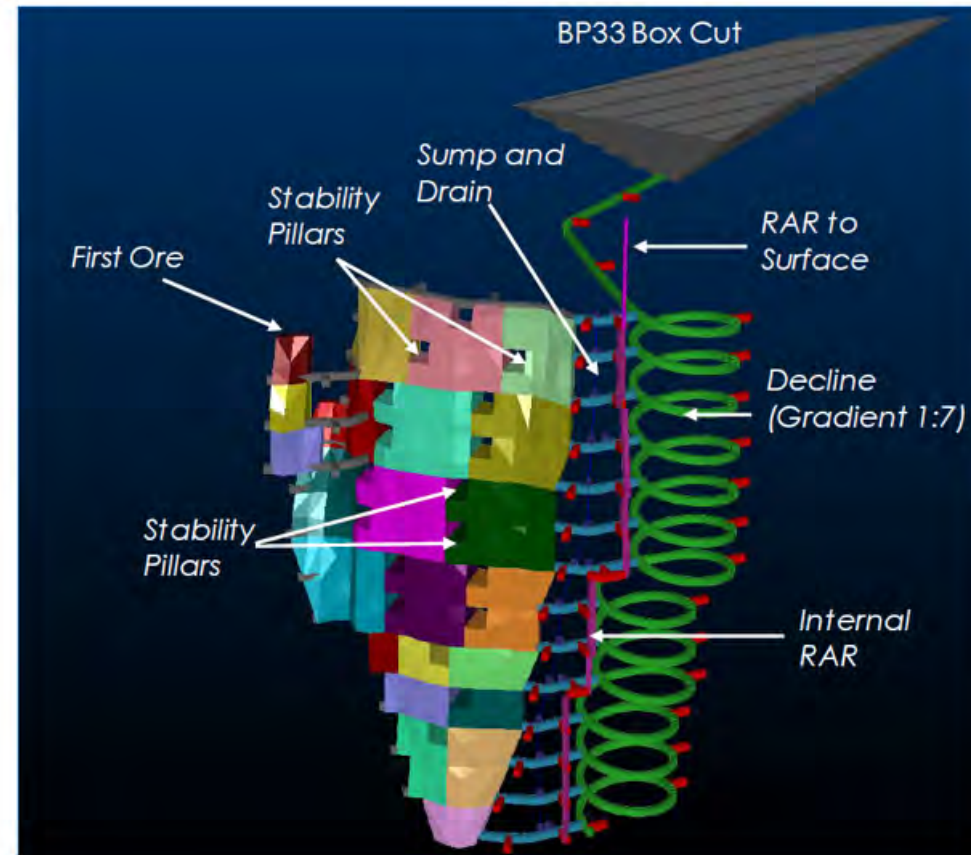
- Expected capital expenditure is \$45 million



# BP33 Project

## Preliminary mine design

- Excavate box-cut to 60 metres
- Initial construction of a 450-metre long decline to the top of the ore deposit
- Progressive construction of a further 5.4 kilometres over the life of the mine
- Transport of the mined ore 7.5 kilometres along haul road to the Grants processing plant
- Processing of the mined ore at the Grants Lithium Project site
- Transport concentrate product to Darwin Port

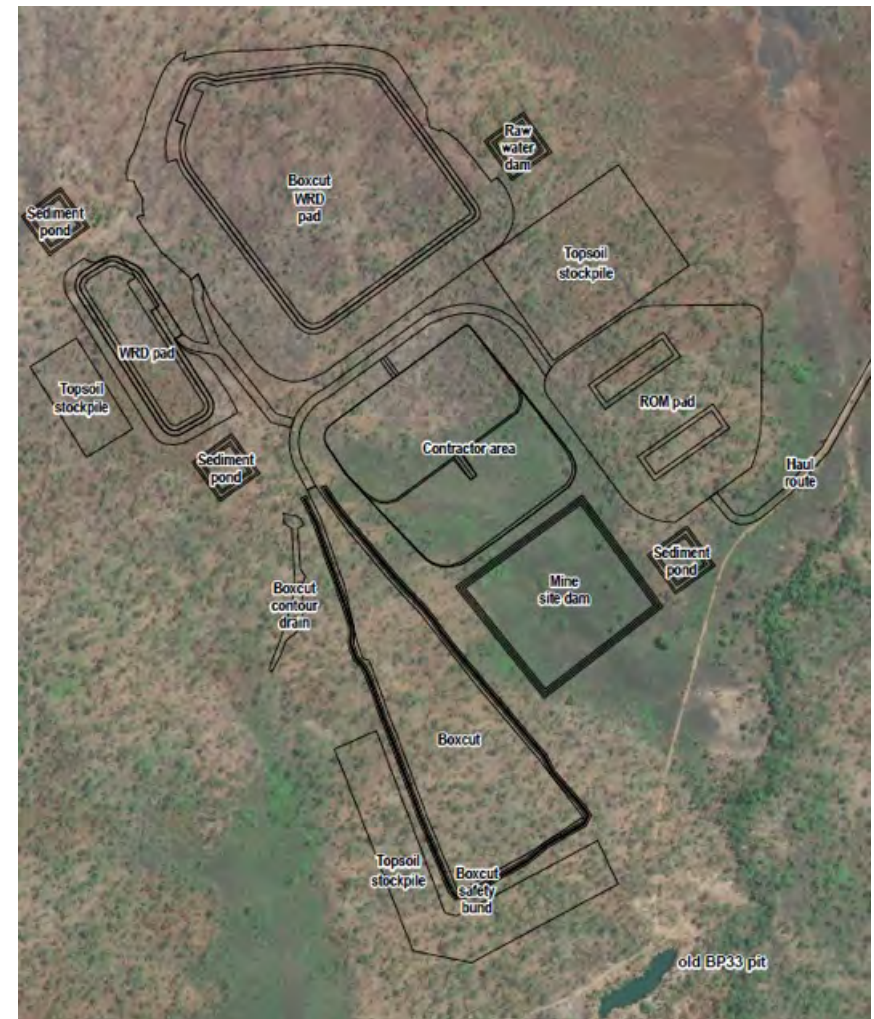


# BP33 Project

## Preliminary mine design and layout

### Mine design

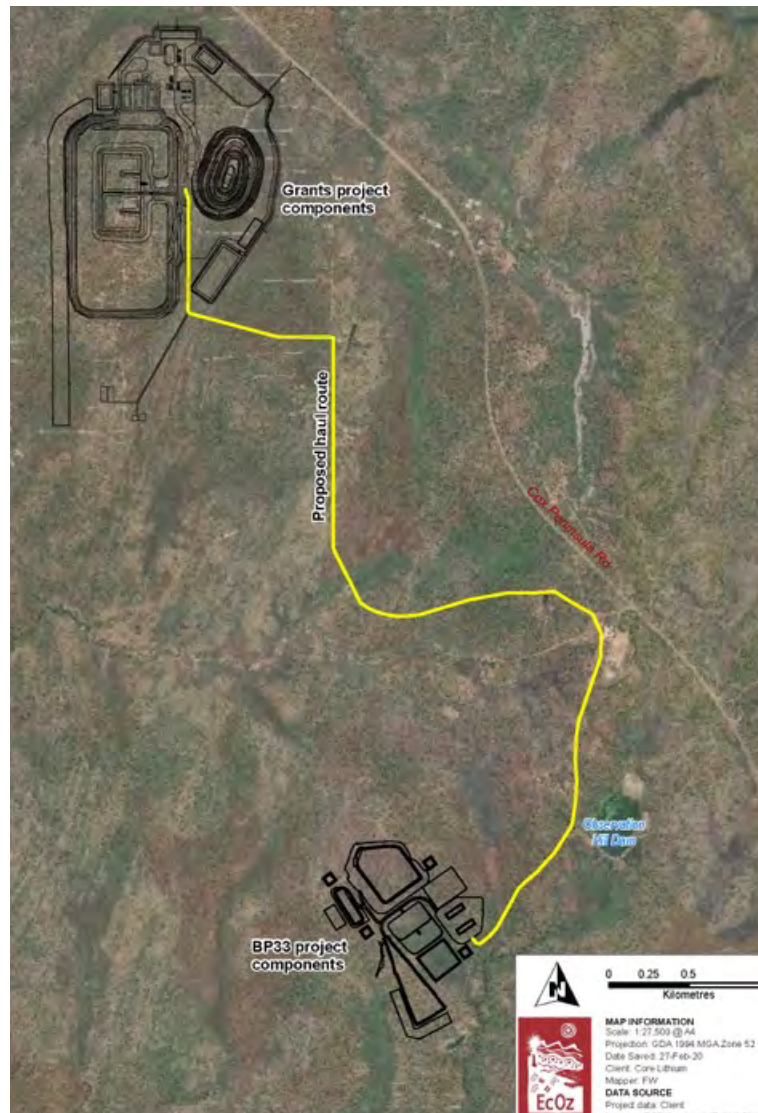
- Mine site footprint – 88 hectares
- Underground mine via box-cut and then portal
- Two onsite waste rock dumps for temporary storage of waste rock
- Construction of two dams:
  - Raw water dam - dust minimisation and water for mine site
  - Mine settling dam - store and treat water containing sediment.
- Site infrastructure:
  - contractor area – office and staff facilities, workshop, storage facilities, power generators, internal access roads and drainage infrastructure and Run of Mine (RoM) pad
- A 7.5 kilometre dedicated haul road between the BP33 site to the Grants Lithium Project site



# BP33 Project

## Preliminary mine design and layout

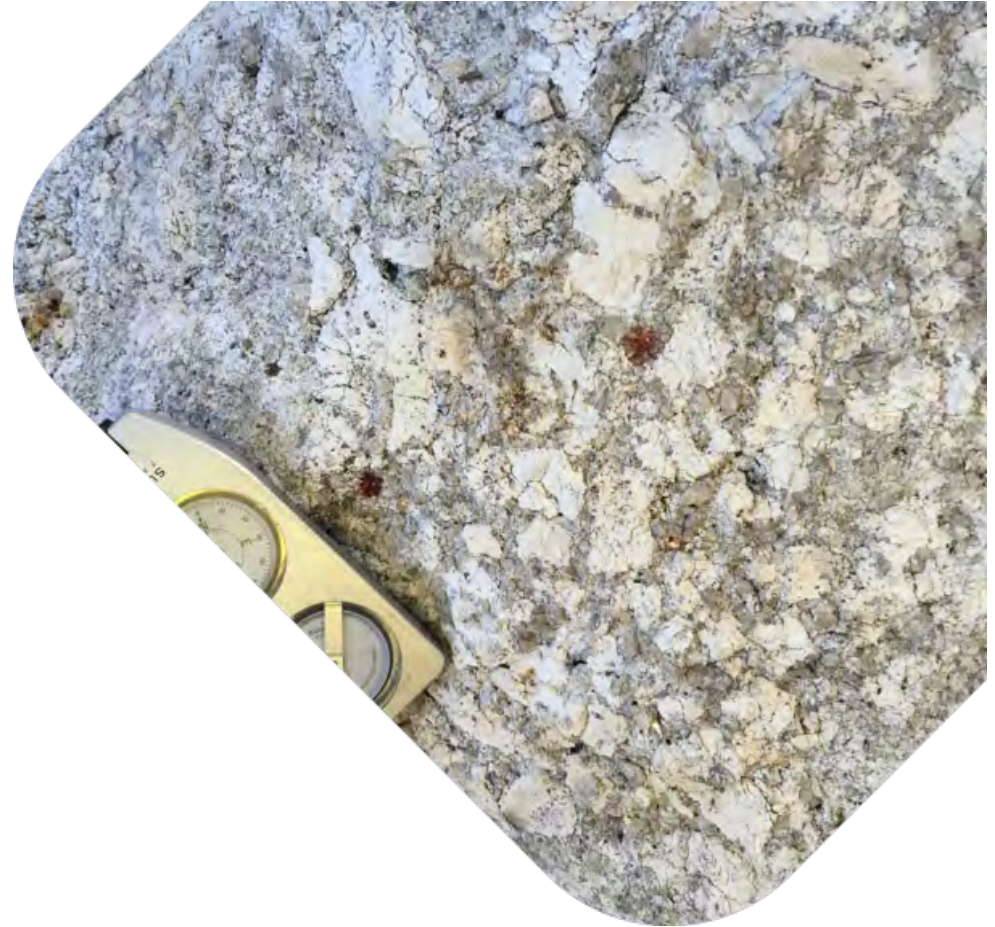
7.5 kilometre dedicated haul road between the BP33 site to the Grants Lithium Project site



# BP33 Project

## Water use and resources

- The box-cut and the underground mine will require dewatering during development and operations
- 1047 kilolitres of water per day
- Water sources - surface water and ground water from:
  - Observation Hill Dam catchment in-flows
  - Water from underground mine
  - Groundwater and rainfall in-flows
  - Water pumped from old mine pits
  - Burrell Creek Groundwater aquifer (subject to approval) – no connection to Berry Springs Dolostone aquifer which is subject to the Berry Springs Water Allocation Plan



# BP33 Project

## Environmental management

### Weed management

- Weed Management Plan in line with DENR guidelines
- Prevent and manage weeds throughout the project including post-closure

### Waste Rock Dumps

- Two waste rock dumps for temporary storage of waste rock
- The waste rock dump material will be used to backfill the box-cut on mine closure
- On completion of mining, there will be no material remaining on the surface

### Water discharge

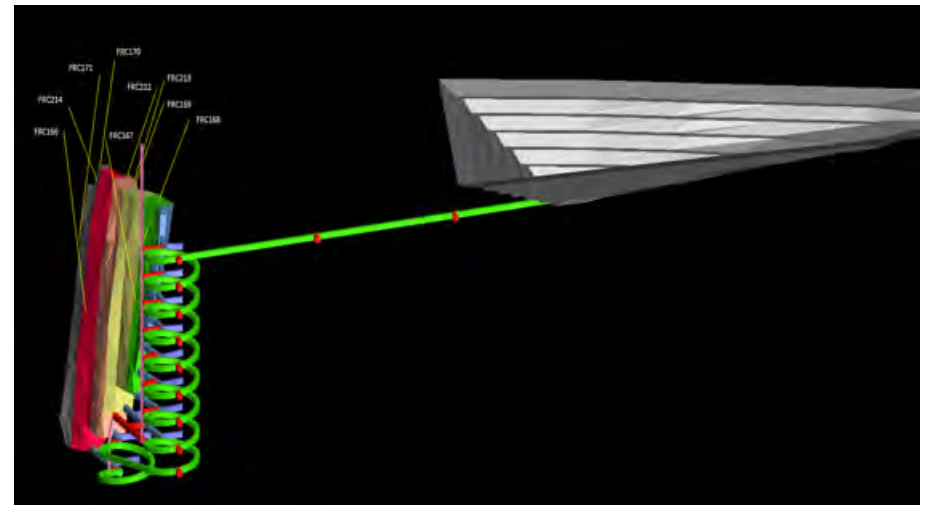
- Observation Hill Dam - storage and water supply dam. In high rainfall events, surplus wastewater will flow via an ephemeral creek into the Charlotte River
- A wastewater discharge licence (WDL) will be applied for under the *Water Act* through the NT EPA



# BP33 Project

## Rehabilitation and closure

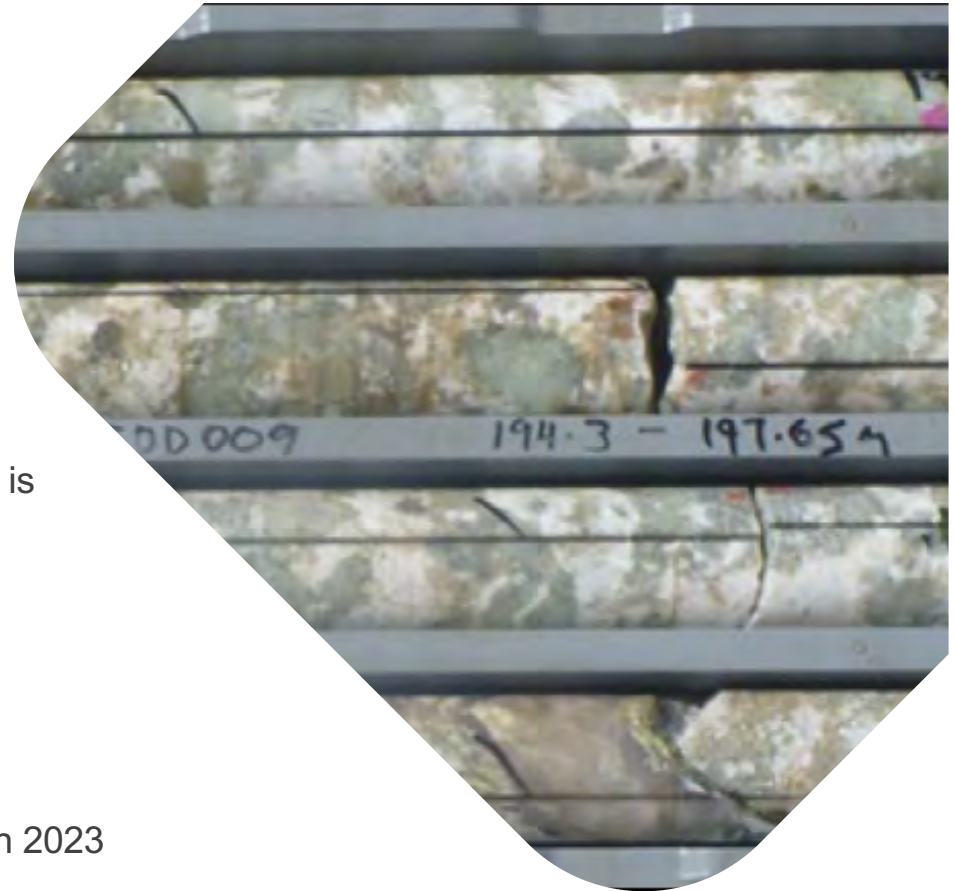
- On completion, the underground mine and box-cut will be completely backfilled, and no waste material will remain on the surface
- All mining infrastructure will be removed as part of the Mine Closure Plan
- The surface will be re-profiled and rehabilitated to enable the project area to be restored to a pre-mining state
- Core will undertake ongoing rehabilitation, erosion and water monitoring



# BP33 Project

## Timeframes

- Production at BP33 would begin once the Grants resource is exhausted and mining ceases at Grants
- Mine life - three to four years:
  - Construction - 6 months
  - Production - 44 months
  - Mine closure and rehabilitation – 5 months
  - Post-closure monitoring – ongoing
- Subject to approvals, BP33 is expected to be operational in 2023



# Grants Lithium Project

## Update

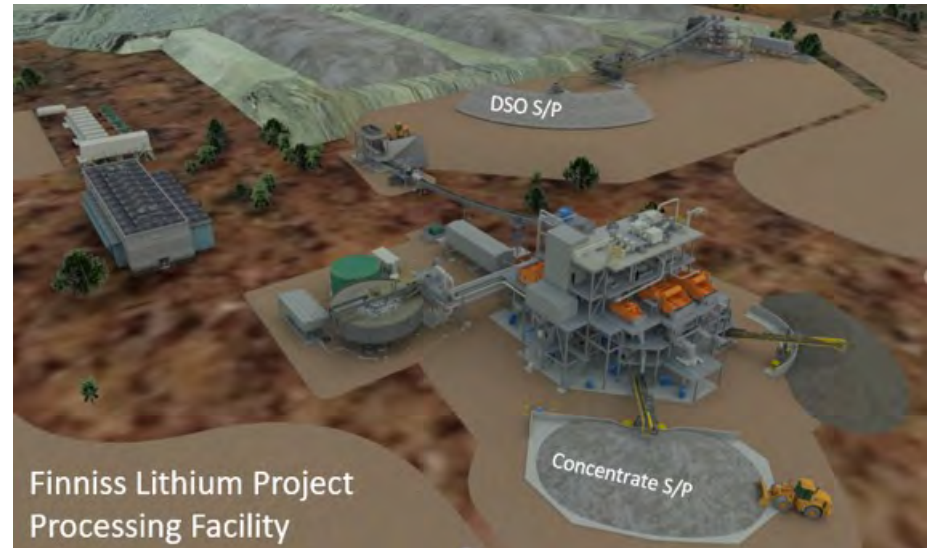
- On 1 April 2020, Core received approval for open pit mining and processing of 1.8 million tonnes of lithium ore at its Grants Lithium Project
- 30 April 2020, Core submitted a Notice of Variation
- On June 2020, NT EPA advised the variations do not require additional approvals

## Capital Expenditure

- Expected start-up capital expenditure is \$73 million

## Timeframes

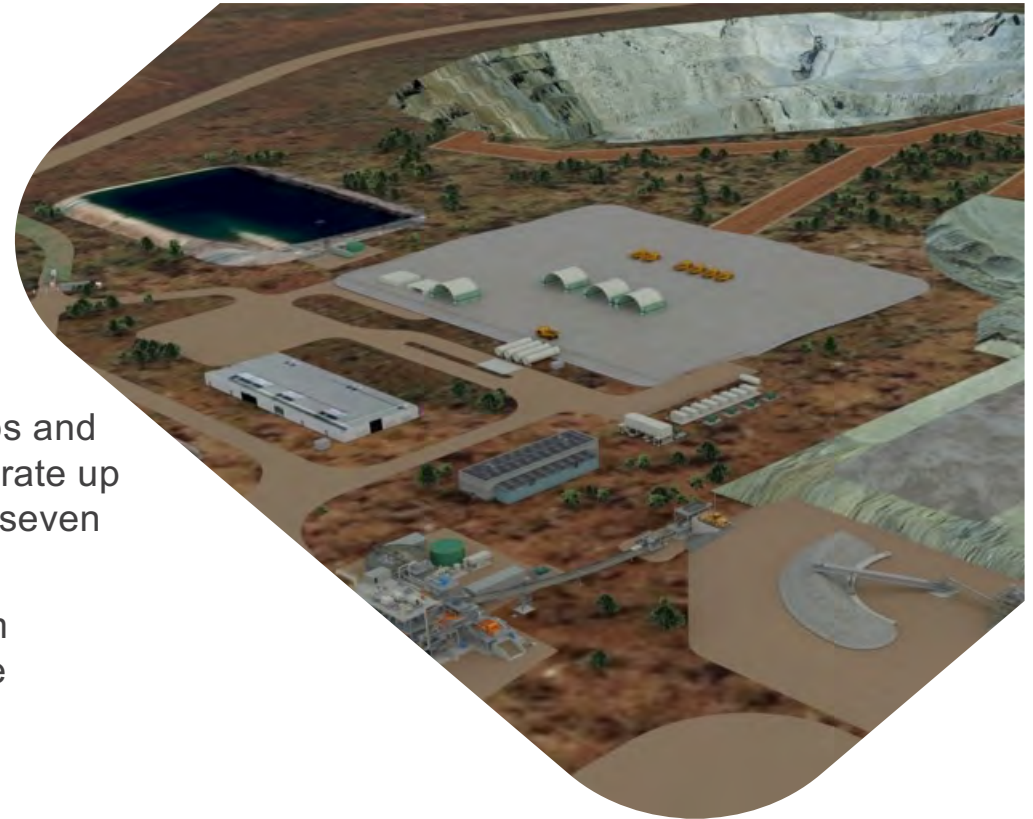
- Construction targeting a start in 2021 and production in 2022



# Employment

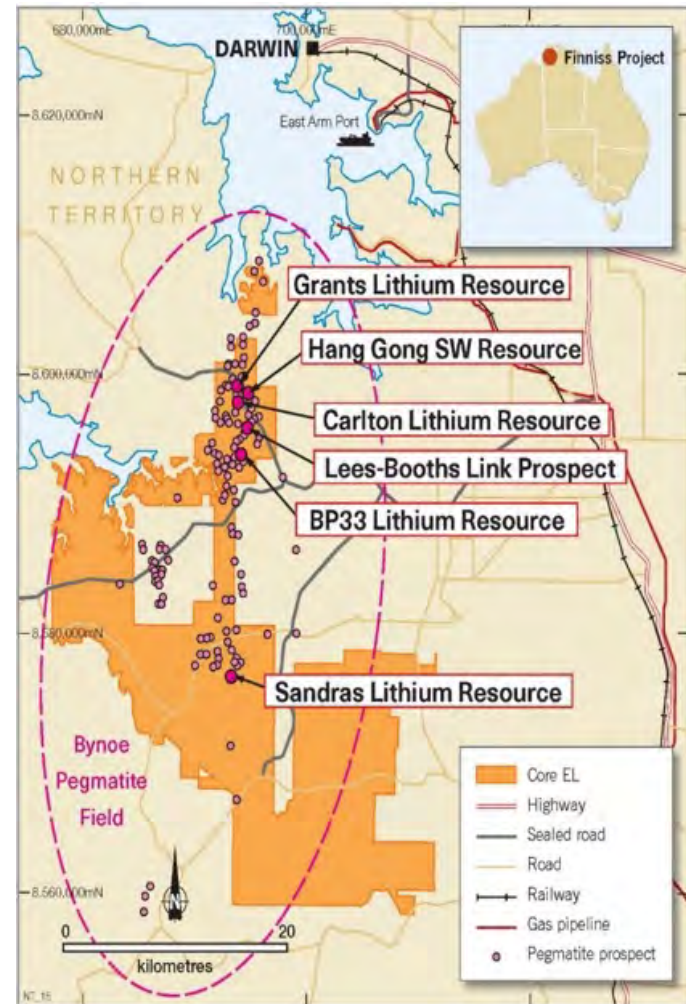
## Employment

- The BP33 Lithium Project will generate 50 - 80 jobs and support the Grants Lithium Project which will generate up to 250 jobs during construction and 250 jobs over seven or more years during the operational phase.
- Core is committed to employing local workers from Darwin, Palmerston and surrounds where possible
- No on-site accommodation camp
- Workers will travel to and from site for each shift



# Indigenous participation

- Belyuen is the closest community to the project area
- Core has committed to working with Indigenous employment and training providers to maximise employment of people from Belyuen and the broader region
- Core is engaging with Indigenous stakeholders including:
  - Belyuen Shire Council
  - Larrakia Rangers
  - Larrakia Development Corporation
  - Larrakia Nation Aboriginal Corporation
  - Kenbi Rangers
  - Indigenous Women in Mining Resources Association



# Cox Peninsula Road – Traffic and Safety

- In 2017-2018, Core consulted with the public about the Grants Lithium Project
- Some short, temporary closures of Cox Peninsula Road during blasting at the Grants project site
- Core has committed to:
  - restricting blasting times and road closures to minimise impacts to road users
  - restrictions on haul truck speeds to 40km/hr within the Berry Springs school precinct
  - restrictions on truck movements past the school during peak school traffic periods
  - truck speed and driver behaviour will be monitored via monitoring systems
- The BP33 project will not require any road closures
- Core will conduct a road condition survey before starting any work
- Development of the BP33 project will extend the timeframe for trucking of ore from the Grants Project site to Darwin Port from three years to seven or more years





Thank you

For more information please contact the Core Lithium office on:

Phone: 08 8317 1700

Email: [info@corelithium.com.au](mailto:info@corelithium.com.au)

[www.corelithium.com.au](http://www.corelithium.com.au)



[corelithium.com.au](http://corelithium.com.au) | ASX CXO



# Core Lithium BP33 Lithium Project

## Stakeholder Engagement Report

Prepared by True North Strategic Communication  
June 2021

Version No.	Issue Date	Prepared by:	Approved by:	Approval Date
V1	1 June 2021	B. Thornton C. Butler		
V2				
V3				

*Recipients are responsible for eliminating all superseded documents in their possession*

### **Consultation statement**

True North Strategic Communication is guided by the principles of good community engagement, based on people's level of interest and concern as outlined by the International Association for Public Participation (IAP2).

Our role is to provide stakeholders and the general public with objective information, so they can provide informed feedback on consultation projects. We give people the opportunity to provide input that is balanced and reflective of the range of community views to independently provide the best possible guidance to decision makers.

Our practice reflects professional standards and ethical standards for human research including anonymity, confidentiality, record storage and keeping people informed.

---



## Table of Contents

<b>Executive summary .....</b>	<b>3</b>
<b>Methodology and approach .....</b>	<b>3</b>
<b>Key stakeholders .....</b>	<b>3</b>
<b>Feedback themes .....</b>	<b>1</b>
<b>Background .....</b>	<b>2</b>
<b>BP33 Project.....</b>	<b>3</b>
<b>Variation to Grants Lithium Project .....</b>	<b>3</b>
<b>Methodology.....</b>	<b>5</b>
<b>Objectives .....</b>	<b>5</b>
<b>Approach.....</b>	<b>6</b>
<b>Key stakeholders .....</b>	<b>7</b>
<b>Tools and tactics.....</b>	<b>8</b>
<b>Stage 1 .....</b>	<b>8</b>
<b>Stage 2 .....</b>	<b>8</b>
<b>Stakeholders .....</b>	<b>10</b>
<b>Findings.....</b>	<b>13</b>
<b>Briefings .....</b>	<b>13</b>
<b>Interviews .....</b>	<b>14</b>
<b>Community stalls.....</b>	<b>17</b>
<b>Phone and email.....</b>	<b>18</b>
<b>Analysis.....</b>	<b>19</b>
<b>Summary.....</b>	<b>19</b>
<b>Key themes .....</b>	<b>19</b>
<b>Recommendations .....</b>	<b>21</b>
<b>Appendix.....</b>	<b>22</b>
<b>Appendix 1 – Materials.....</b>	<b>22</b>
<b>Appendix 2 – Stage 1 engagement report .....</b>	<b>22</b>



## Executive summary

Core Lithium is continuing to engage with stakeholders and the community about its Finiss Lithium Project. Core received approval for the Grants Lithium Project in April 2020 and intends to develop and operate an additional mine, the BP33 Lithium Project. Core began consulting about the BP33 Lithium Project and resultant changes to the Grants project in August 2020, which forms Stage 1 of the BP33 engagement. A separate report for Stage 1 was produced but it is also summarised in this document. Stage 2 occurred during May 2021 and was a broader engagement which focussed on speaking with the most impacted stakeholders, having a presence in the local communities and broadly communicating Grants Lithium project updates to a wide range of stakeholders.

This stakeholder engagement report will help inform a Social Impact Assessment for the BP33 Lithium Project and is a regulatory requirement of the Northern Territory Environment Protection Authority's referral of the project to a Supplementary Environmental Report.

## Methodology and approach

Stage 2 of the BP33 engagement was conducted at the levels of inform, consult and involve. The high level objective was to ensure stakeholders knew about the project and its approved and proposed changes and had an opportunity to provide feedback. Core and the project team did this by producing a range of communication tools and using a range of tactics including:

- emails to stakeholders
- fact sheet
- meetings and briefings
- SIA interviews
- community information stalls
- letters to residents along the haul route
- maps
- Q&A
- poster
- presentation
- company website
- social media posts
- project phone and email.

These tools and tactics resulted in:

- 117 stakeholders receiving an email with the fact sheet
- 5 briefings
- 5 interviews
- 77 attendees at community information stalls
- 5 phone calls.

## Key stakeholders

This program facilitated briefings and interviews with the most impacted stakeholder groups and conversations with the local communities. It also provided information and updates to a wide scope of interested stakeholders. The key stakeholders included in Stages 1 and 2 were:

- local government
- relevant Aboriginal groups
- representatives and people in affected communities
- local elected representatives
- local industry associations
- non-government organisations
- environmental groups
- stakeholders who have previously registered interest
- people who have previously provided feedback
- NT government departments, ministers and/or their advisors.



## Feedback themes

Generally the sentiment around the project was positive and most people support the Finniss Lithium Project, mainly due to the potential employment and economic benefits. People are keen to see work start and many expressed an interest in work or contracting opportunities. The main feedback themes were spread across road safety and road degradation, local jobs and community benefits, opportunities for Aboriginal employment and contracts, contribution to the local economy and impacts to water.

### ***Road safety and degradation***

Road safety was a concern of both stakeholders and community members. People spoke about how Cox Peninsula Road is already unsafe, narrow and in poor condition. Councils often campaign for upgrades and community members are keen to see improvements. A number of people queried how Core's road trains would contribute to safety problems and decreasing quality of the road.

### ***Local jobs and benefits***

Sentiment around the project was generally very positive with many stakeholders and community members keen to see things start. Councils and Aboriginal groups would like to see as many jobs as possible go to local people and those who attended information stalls were readily raising their hand to be involved. Likewise, people want to see benefits from the mine flow onto the community and raised specific suggestions including visits and talks at the Berry Springs Primary School, purchasing goods and services locally and sponsorship of events and community groups.

### ***Opportunities for Aboriginal employment and contracts***

Local Aboriginal organisations said they would like to work with Core to identify work and contract opportunities that will benefit Aboriginal people over the long term. Many locals from Belyuen enquired whether there would be opportunities for local Aboriginal employment as there are few job opportunities in Belyuen.

### ***Contribution to the local economy***

Positive sentiment around the project also raised comments and feedback about the positive impact the project will have on the region. This sentiment was often tied with wishes for the project to provide local jobs and the project's ability to give back to the community.

### ***Impacts to water***

Water use is a sensitive topic in the communities surrounding the project. Some stakeholders raised concerns about how the project's use of water might have flow on effects to groundwater supplies which are already suffering. There was some misconception that the project will contaminate water in the area and there was mention, albeit limited, of Observation Hill Dam being used for recreational purposes.

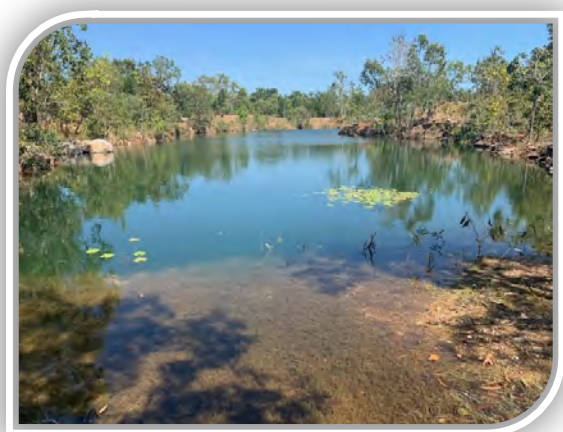


## Background

Core holds approximately 500 km<sup>2</sup> of granted exploration tenements across the Bynoe pegmatite field in the Cox Peninsula area of the Northern Territory. This area which forms the Finniss Lithium Project incorporates several high-grade lithium deposits including the Grants and BP33 deposits and other prospects being explored by Core.

On 1 April 2020, Core received approval for its Grants Lithium Project which involves mining and onsite processing of lithium ore and trucking the concentrate product about 90 kilometres via Cox Peninsula Road and Stuart Highway to Darwin Port for export to China.

Further exploration across the Finniss Lithium Project area has identified a number of satellite ore resources near the Grants Lithium Project, including the BP33 deposit. Core is proposing to extend the operating period of the Grants Project processing facility to accommodate processing and export of ore mined from the BP33 project and potentially a number of other nearby ore deposits associated with the Finniss Lithium Project. In April 2020, Core submitted a Notice of Intent to the Northern Territory Protection Authority (NTEPA) for the proposed BP33 project.



*BP33 site (left) and Grants site (right)*

In July the Northern Territory Government advised that the BP33 Notice of Intent would be the first project to be assessed under the newly reformed environmental legislation, the *Environment Protection Act 2019*. On 10 July 2020, the BP33 project was advertised on the NT EPA website as open for public comment, with information on the proposal, including all relevant referral documents. The public comment period was open from 10 July 2020 to 10 August 2020.

As part of the environmental assessment process and in line with the recommended approach for stakeholder engagement, Core Lithium engaged with stakeholders in July and August 2020 to provide information on Core's proposed BP33 project, listen to any feedback and took the opportunity to update stakeholders on the Grants project. This forms the basis of Stage 1 engagement.

The NT EPA advised that a Supplementary Environmental Report (SER) and social impact assessment (SIA) would be required for the BP33 project. Core has continued to engage with the community and stakeholders on the BP33 and Grants projects and has sought additional feedback to inform the social impact assessment in line with the stakeholder engagement strategy.



### BP33 Project

The BP33 site contains pegmatite, a granite type rock containing spodumene, which is a source of lithium. The BP33 Lithium Project is 2.5 kilometres south-west of Cox Peninsula Road, approximately 33 kilometres west of Berry Springs and 7.5 kilometres from the Grants Project site. The mine site footprint is approximately 88 hectares while the footprint of the haul road from BP33 to Grants is approximately 12.5 hectares (13 metres wide by 7.5 kilometres long).

The BP33 project will involve underground mining of ore and trucking to the Grants processing plant via a 7.5 kilometre purpose-built haul road. The key components of the BP33 project are as follows:

- Construction of site infrastructure, including a contractor's area (storage and maintenance), internal access roads and drainage infrastructure, water storages and Run of Mine (RoM) pad.
- The contractor's area will comprise a raised compacted pad with a footprint of approximately 6.4 hectares. The area will accommodate office and staff facilities, laydown and storage areas, maintenance workshop, fuel storage and refuelling, power generators.
- An underground mine that uses a box-cut portal that is excavated to approximately 60-70 metres deep to remove weathered waste rock and provide a stable foundation for construction of an underground portal. The box-cut will cover an area of six hectares.
- Construction of a 450-metre long decline from the base of the box-cut to the top of the spodumene and progressive construction of a further 1.7 km of decline over the mine life to connect lower levels of the underground mine.
- Two onsite waste rock dumps (WRD) for temporary storage of oxide waste rock (from the box-cut) and transitional/fresh waste rock (from the underground) before progressively backfilling the material.
- A Raw Water Dam (RWD) will be constructed to store water for use in dust suppression and to supply the mine site facilities. A Mine Settling Dam (MSD) will be constructed to store and treat sediment laden water.
- Underground mining of the resource over nine production levels using sublevel retreat mining methods over a life of mine of approximately four years.
- Transport of the mined ore approximately 7.5 kilometres along a dedicated haul road (to be constructed) to the Grants processing plant.

The estimated workforce of 150 to 180 is to be sourced locally from Darwin, Palmerston and surrounding areas where possible. There will be no on-site accommodation camp, with workers expected to travel to and from site for each shift. Belyuen is the closest community to the project area and Core has committed to working with Aboriginal employment and training providers to maximise employment of people from Belyuen and the broader region. Where there is a lack of available skilled personnel, Fly-In-Fly-Out arrangements will be made for a portion of the workforce, and commercial accommodation in the region provided.

### Variation to Grants Lithium Project

Development of the BP33 Project will involve changes to the approved Grants Lithium Project. Once ore deposits from the Grants Project are exhausted, ore will then be mined from the BP33 project and will be trucked via haul road to the Grants site for processing.

This processed ore will then be trucked to the Darwin Port for export.

This process will extend the life of the processing facility at Grants Project from its current three-year timeframe approved under the *Mining Management Act* to seven or more years. The resulting changes to the Grants Project include:

- increasing the tailings storage capacity to contain the additional tailings from the BP33 Project



- water will continue to be drawn from Observation Hill Dam for the life of the Grants Project
- extending the life of the mine site dam from three years to 7+ years before decommissioning and rehabilitation
- extending the timeframe for trucking of ore from Grants Project to Darwin Port from three years to 7+ years
- extending the schedule for closure and rehabilitation of the Grants Project to 7+ years
- additional workforce will be required for continued operation of the processing facility.



*Grants site (left) Observation Hill Dam (right).*

The operation of the Grants processing facility was previously assessed under the *Environmental Assessment Act*. A separate Notice of Variation was submitted to the NTEPA to address the variation to the approved activities. In June 2020, the NT EPA advised that the Grants Project has approval to operate for seven years.



## Methodology

Using the International Association for Public Participation (IAP2) principles that guide good community engagement, this engagement was conducted at the levels of **inform**, **consult** and **involve**.

Level of Engagement	Promise to the Public
Inform	We will keep you informed
Consult	We will keep you informed, listen to your concerns and provide feedback on how the public's input influenced the decision
Involve	We will work with you to ensure your concerns are reflected in the alternatives developed, and provide feedback on how the public's input influenced the decision
Collaborate	We will look to you for advice, ideas and solutions and incorporate those into the decisions as much as possible
Empower	We will implement what you decide
©International Association of Public Participation <a href="http://www.ipa2.org">www.ipa2.org</a>	

## Objectives

The **communication** objectives of this stakeholder engagement were to:

- update stakeholders on changes to the Grants Project since the previous engagement
- notify stakeholders of the commitments made by Core as part of the Grants EIS process
- inform stakeholders of the BP33 Project, details and possible impacts
- encourage stakeholders to provide feedback on interest or concerns about the project
- continue to build on existing stakeholder relationships and trust
- provide clarity and understanding about the various Core projects in the region.

The **engagement** objectives of this stakeholder engagement were to:

- listen to and understand the priorities and perspectives of all stakeholder groups
- manage stakeholder expectations
- provide clarity and information on any issues of concern raised by stakeholders
- support delivery of projects that are environmentally, economically, culturally and socially acceptable to the community and key stakeholders (i.e. earn social licence to operate)

- provide regulators with confidence that all positive and negative impacts are well understood and can be managed through all phases of the project
- provide guidance to the company's long-term social performance.

## Approach

Core has developed positive relationships and trust with many of the Finnis Lithium Project stakeholders through early and ongoing engagement.

The **engagement approach** for the BP33 project SER was to:

- provide updates to the community and seek feedback through community information stalls
- provide briefings to those stakeholders who have not been briefed but who have an interest in the project or could be impacted by the project
- arrange one-on-one discussions with some community members or stakeholders who are likely to be most affected by the project, to understand their interest or concerns, to ensure the SIA accurately reflects and analyses any impacts to the community
- provide updates to other stakeholders via emails and fact sheets, including those who have been briefed on BP33, or who have received information on the project in 2020.

The content of the **communication and engagement** focused on providing updates and information to stakeholders on:

- management policies and plans or actions that Core has committed to since the Grants EIS process
- changes to the Grants project as a result of BP33
- information on the BP33 project
- timeframes
- any other updates.

Many stakeholder representatives were briefed on the updates to the Grants project and BP33 project in 2020, and online communication and fact sheets were sent to many community stakeholders. The second stage of the engagement process was seen as an opportunity to further engage with the communities and update everyone on the Grants project and provide information on the BP33 project and to seek feedback from all stakeholders.

**Key implementation strategies:**

- ensure a tailored approach to reaching stakeholders, for example phone calls, emails, meetings and briefings, presentations, letters, information sessions and pop-up stalls
- draw on feedback raised in previous engagement to help guide key messages and areas of focus for stakeholder engagement
- refer to previous stakeholder information requests to ensure all interested stakeholders are updated on the projects
- ensure key stakeholders receive objective information direct from Core rather than from media or third parties
- continue to build relationships and make sure it is easy to contact the company to clarify issues and address rumours and misinformation
- give key stakeholders a chance to provide early input on issues that may affect them or project design and provide regular updates to these stakeholders
- ensure a culturally appropriate approach to engagement for Aboriginal stakeholders
- a risk-based approach that devotes the greatest effort to stakeholders likely to experience the greatest level of impact – positive or negative – from the project, while raising

awareness of all stakeholders in the project footprint on how they can get information and provide feedback.

### Key stakeholders

The key stakeholder groups included:

- local government including Belyuen Community Government Council, Wagait Shire Council, Litchfield Shire Council
- relevant Aboriginal groups including Larrakia Nation, Kenbi Rangers, Ironbark Aboriginal Corporation, Larrakia Development Corporation and others
- representatives and people in affected communities, including Belyuen, Berry Springs, Wagait Beach, Cox Peninsula
- local elected representatives
- local industry associations including Chamber of Commerce, NT Farmers Association, NT Cattlemen's Association, Tourism Top End and NT Guided Fishing Industry Association
- non-government organisations, including environmental groups, in particular the Environment Centre NT
- stakeholders who have requested to be kept informed of project updates
- stakeholders who have previously provided feedback on the Finniss Lithium projects
- NT Government departments, ministers and/or their key advisors.

A full list of stakeholders can be found in the section on stakeholders on page 10 of this report.



## Tools and tactics

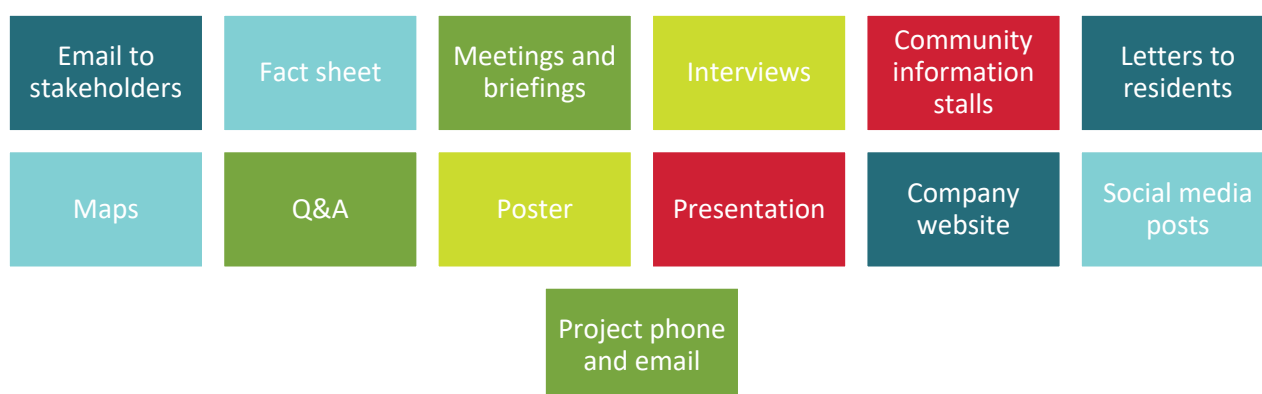
### Stage 1



In July and August 2020, Core engaged with stakeholders about the BP33 project. This included:

- an **email** and **factsheet** sent out to stakeholders in July 2020 to provide background information about the project and the engagement process
- priority stakeholders were invited to attend an **online briefing** by Core while others were offered a briefing or invited to contact Core or True North if they had feedback or questions
- asking some stakeholders to share the fact sheet with their members, contacts and communities to ensure people were informed of the project and had the opportunity to provide feedback or seek more information
- providing online briefings (due to the social distancing guidelines associated with COVID-19) where Blair Duncan, Chief Operating Officer at Core Lithium took stakeholders through an **online presentation** that outlined the BP33 project, updates on the Grants project and provided overall information on Core’s activity in the Cox Peninsula area. Stakeholders were invited to ask questions throughout the presentation and to provide any comments or feedback.

### Stage 2



In May 2021, Core continued its stakeholder communication and engagement about the project with the following:

- An **email** and **fact sheet** were sent out to all stakeholders in May 2021
- The **fact sheet** was used to provide an update on the proposed BP33 Project and updates to the Grants Project. It included maps and images to visually show the location of the site, its layout and a concept of the box cut portal. The fact sheet listed the dates, times and locations of the three community engagement stalls as well as an email and phone number for queries and feedback.

- Priority stakeholders were invited to attend a **briefing** by Core while others were offered to contact Core or True North if they had any feedback or questions through the **project phone and email**
- Three **community information stalls** provided an opportunity for Core and the local communities to discuss the project and provide feedback:
  - Wagait Beach Supermarket, Saturday 15 May
  - Berry Springs Shopping Village, Sunday 16 May
  - Berry Springs Shopping Village, Tuesday 18 May
- **Interviews** with selected stakeholders to help inform the social impact assessment
- A **poster** was displayed at a number of locations to advertise the community stalls and included a QR code to access the fact sheet for more information. The poster was displayed at the Berry Springs Shopping Village, Wagait Beach Supermarket, Berry Springs Tavern, the Mandorah Ferry and ferry and was also sent to local member Ian Sloane's office, Wagait Shire Council, Litchfield Shire Council, Cox Country Club, Dundee Social and Recreational Club, Sandpalms Resort and the Lodge of Dundee
- A comprehensive **presentation** was used at briefings to provide detailed information about the Finnis Lithium project. The briefings provided an overview of both projects, updates on the Grants project, key information for the BP33 project, including the mine design, water use and sources, environmental management, rehabilitation and closure, traffic and road safety, employment and contracts, and timeframes.
- A number of **maps** were used to show the location of the project, the mine site layout and the proposed haul route between Grants and BP33.
- An internal **Q&A** document was also produced to ensure consistent messaging from all project team members during engagement activities.
- A **letter** to residents with the fact sheet was pegged onto approximately 45 fences along the haul route on Cox Peninsula Road to advise the planned start of construction for Grants later this year and to outline the haul operations, road safety measures and provide details about the information stalls. The letter included the phone and email to contact for more information.
- Information about the project and community information stalls were sent to various Facebook groups and pages as well as local contacts for promotion on **social media**.
- The fact sheet was made available on Core's **website**.



*Posters displayed on local noticeboards*

Copies of all materials are available at Appendix 1.



## Stakeholders

A summary of the organisations that were contacted, sent a fact sheet and briefed is provided below. This is separated into stage one in July/August 2020 and stage two in May 2021:

Stakeholder	Stage one engagement BP33 July, August 2020		Stage two engagement BP33 May 2021	
	Sent email, fact sheet	Briefed	Sent email, fact sheet	Briefed
<b>Australian Government</b>				
Member for Lingiari, Warren Snowdon	✓		✓	
Member for Solomon, Luke Gosling	✓		✓	
<b>Northern Territory Government</b>				
Department of Industry, Tourism and Trade (formerly Departments of Tourism, Sport and Culture, Trade, Business and Innovation, Primary Industry and Resources)	✓	✓	✓	
Department of Environment and Natural Resources	✓	Offered briefing	✓	Offered briefing
Department of Infrastructure, Planning and Logistics	✓	✓	✓	
Department of Education	✓	Offered briefing		
Chief Minister			✓	
Minister for Mining and Industry			✓	
Minister for Renewables and Energy, Infrastructure, Planning and Logistics, Environment, Water Security and Climate Change			✓	
Daly Electorate Office. Member for Daly	✓		✓	Offered briefing
Berry Springs Primary School	✓	✓	✓	✓
Power and Water	✓	✓		
NT Police, Fire and Emergency Services	✓		✓	
Bushfires NT	✓		✓	
<b>Local government</b>				
Belyuen Community Government Council	✓	Offered briefing	✓	*
Litchfield Shire Council	✓	Offered briefing	✓	✓



Wagait Shire Council	✓	✓	✓	✓
City of Palmerston	✓		✓	
<b>Aboriginal groups</b>				
Larrakia Development Corporation	✓	✓	✓	✓
Aboriginal Areas Protection Authority			✓	
Northern Land Council			✓	
Larrakia Nation Aboriginal Corporation	✓	Offered briefing	✓	
Ironbark Aboriginal Corporation	✓		✓	
Kenbi Rangers	✓	Offered briefing	✓	✓
Indigenous Women in Mining Resources Association (IWMRA)	✓		✓	
<b>Environment and community groups</b>				
Environment Centre of the NT	✓	✓	✓	
Amateur Fisherman's Association NT (AFANT)	✓		✓	
Wagait Beach Progress Association	✓		✓	Offered briefing
Rural Residents Rights Group	✓		✓	
Dundee Progress Association	✓		✓	Offered briefing
Kamfari – Darwin Motorcycle Club			✓	
Livingstone Recreation Reserve Management Committee			✓	
COTA Berry Springs Seniors			✓	
Palmerston and Litchfield Seniors Association			✓	
<b>Business and Industry Associations</b>				
Chamber of Commerce	✓	✓	✓	Offered briefing
Minerals Council of Australia, NT Division	✓	✓	✓	Site visit
Tourism Top End	✓	Offered briefing	✓	
NT Cattlemen's Association			✓	
NT Farmers Association			✓	Offered briefing
NT Guided Fishing Industry Association	✓	Offered briefing	✓	Offered briefing



Palmerston Regional Business Association	✓		✓	
Sea Link			✓	
<b>Community members</b>				
Community members from previous stakeholder engagement	✓		✓	
Wagait Watch	✓		✓	
Berry Springs Shopping Village	✓		✓	
Berry Springs Tavern			✓	
Dundee Beach Holiday Park	✓		✓	
Sandpalms Resort and Tropical Motel	✓		✓	
Dundee Social and Recreational Club	✓		✓	
Cox Country Club	✓		✓	
Wagait Beach Supermarket	✓		✓	
Territory Wildlife Park	✓	Offered briefing	✓	
Tumbling Waters Holiday Park			✓	
Residents along the haul route on Cox Peninsula Road			✓	
Local community at community information stalls			✓	✓

\*An online briefing was arranged for Belyuen Community Government Council as part of the May council meeting, however the council had technical difficulties and the briefing could not proceed.

As per the recommendation from the Belyuen Council, Core sought advice from the council members on how they would like Core to engage with the Belyuen community residents. At the council meeting, it was agreed that Core would arrange a community meeting in late June to present to the community residents and provide opportunities for questions and feedback.



## Findings



### Briefings

A total of five briefings were conducted with key stakeholders during Stage 2. A number of stakeholders either declined the offer of a briefing, were not available or did not respond to the offer. Many of the key stakeholder groups were briefed in Stage 1 and did not require additional information or updates.

Key feedback points from the briefings are detailed per stakeholder below.

Stakeholder	Comments, queries or feedback
Berry Springs Primary School	<ul style="list-style-type: none"> <li>• Queries about timeframes</li> <li>• Would like to have Core staff i.e. geologists talking to the kids in classrooms, scientists coming in as part of the education program</li> <li>• Query about where workers will be bussed from</li> <li>• Pleased the trucks will not travel during peak school drop off and collection times</li> <li>• Advised 29 buses leaved Taminmin in the afternoon and there is about an hour of chaos</li> <li>• Would like to propagate natives and sell them back to Core</li> <li>• Keen for any educational support opportunities</li> </ul>
Kenbi Rangers and Traditional Owners	<ul style="list-style-type: none"> <li>• Queries and concerns about impacts to roads and increased traffic</li> <li>• Queries about how workers will transport to the site and whether workers will stay on site</li> <li>• Queries about opportunities for Kenbi Rangers. Keen for rehabilitation opportunities</li> <li>• Asked whether the project needs to meet a certain percentage of Aboriginal workers/capacity</li> <li>• Noted previous Aboriginal engagement with major contractors has not always been good and processes didn't work. Asked if works can be broken down purposefully for Aboriginal opportunities</li> </ul>
Litchfield Council (including Council Members)	<ul style="list-style-type: none"> <li>• Feedback was positive and supportive of the benefits to the local economy</li> <li>• Questions around the mine size, number of staff, how staff will travel to the site</li> <li>• Queries about road train size</li> </ul>



	<ul style="list-style-type: none"> <li>• Question about whether the NT Government is committing to any infrastructure upgrades to any intersections</li> <li>• Gets a lot of complaints about safety at intersections</li> <li>• Supportive of the project and engagement process to date</li> <li>• Would like to see job opportunities for Litchfield residents</li> </ul>
Wagait Council	<ul style="list-style-type: none"> <li>• Feedback was generally positive</li> <li>• Questions about the mine life, jobs and procurement, lithium refineries, blasting and road closures</li> <li>• Discussion about communicating the road closures to the community and the importance of ongoing communication</li> </ul>
Larrakia Development Corporation	<ul style="list-style-type: none"> <li>• Discussed Aboriginal employment opportunities</li> <li>• Discussed need for Core and LDC to continue to engage on workforce opportunities for local Aboriginal people</li> <li>• Core reiterated that opportunities for workers will be better known once management contracts are awarded</li> <li>• LDC raised heritage management and the desire for someone to walk the site for cultural heritage items so they are not destroyed before construction</li> </ul>

## Interviews

Targeted interviews were conducted in Stage 2 with a select group of five stakeholders to gain information to help inform the social impact assessment. Information from previous interviews for the Grants Lithium social impact assessment also informed the social impact assessment. Information provided by stakeholders in these interviews is detailed below.

Stakeholder	Comments, queries or feedback
Kamfari – Darwin Motorcycle Club President	<ul style="list-style-type: none"> <li>• Kamfari is a one day event on the Sunday of the May long weekend every year</li> <li>• Always in touch with exploration staff at Core about the mine and the event</li> <li>• Kamfari is east of the mine site on the northern side of the Cox Peninsula</li> <li>• The event always has traffic controls from around 7am to 4pm</li> <li>• Might look for new locations when their five year permit expires in a couple of years</li> <li>• Three to four other Sunday events throughout the year. Other events have minimal impact on the road</li> <li>• Can't foresee any issues in the future as it is just one Sunday a year but would like to keep in contact</li> </ul>
Belyuen Council, Chief Executive Officer	<ul style="list-style-type: none"> <li>• Belyuen is a small community of about 190 people. It used to be larger but there were some family problems a long time ago</li> <li>• Only two Larrakia people in the community, others are a mix</li> <li>• Not many employment opportunities</li> <li>• People are passionate about culture and the cemetery holds strong significance</li> <li>• People don't tend to travel much or to Observational Hill Dam and will instead go fishing along the coastline</li> <li>• Some people have access to cars and drive to Darwin and Palmerston. Some go on the ferry</li> </ul>



	<ul style="list-style-type: none"> <li>• Road safety will be an issue and people travel regularly to the Tumbling Waters pub</li> <li>• Issues of drink driving, unroadworthy vehicles and some unlicensed driving</li> <li>• Concerns about additional trucks on the road as there is no space to pull over</li> <li>• Long stream of cars from Darwin on Friday, Saturday and Sunday with trailers, boats, quad bikes etc. Sunday afternoon they all head home</li> <li>• Few instances where trailers have been overturned</li> <li>• Trucks should be well lit so people can see them from a long way away</li> <li>• Suggested additional signage about the road trains and a community meeting and safety campaign about how to be safe on the roads</li> </ul>
<p>Wagait Shire Council, Chief Executive Officer and President</p>	<ul style="list-style-type: none"> <li>• A lot of FIFO workers living in Wagait, some who already have contracts with Core</li> <li>• Approx. 580 people</li> <li>• Not as many weekenders and holiday houses as before. More retirees or families moving in</li> <li>• People value a peaceful and laidback lifestyle</li> <li>• People are passionate about conservation and ecology</li> <li>• Community minded population described as confident, resilient and robust</li> <li>• Generally, people who work in Darwin take the ferry, people who work in Palmerston and rural drive</li> <li>• Strong awareness about the mine in the community and some looking forward to it starting</li> <li>• Positive community sentiment with no negative comments made to council</li> <li>• A lot of early fears have been met with adequate responses</li> <li>• Big turnover in property sales and new residents perhaps because of the mine starting up</li> <li>• Some interest in employment opportunities</li> <li>• Road safety is a concern</li> <li>• Road deterioration is already a concern during the wet and expects this to become worse with more trucks</li> <li>• Caravans say it is difficult to pass another car coming in the other direction</li> <li>• Continually pressuring NTG about upgrading the road</li> <li>• Keen for ongoing communication with community particularly around road closures</li> <li>• No known current use of Observation Hill Dam</li> </ul>
<p>Litchfield Shire Council, Mayor</p>	<ul style="list-style-type: none"> <li>• Mix of people who are older, long term residents with larger parcels of land who are committed to the environment and maintaining rural living setting</li> <li>• People only want improvements to the basics like roads, water, community infrastructure</li> <li>• People have horses, go fishing and mind their own business and like it that way</li> <li>• Some mango growers and mango farms. A number of people agist cattle but not cattle farmers</li> </ul>



	<ul style="list-style-type: none"> <li>• Southport residents live on urban sized blocks for affordability</li> <li>• People who commute to Darwin and Palmerston often use back roads like Finn Road to connect to Amy Johnson</li> <li>• Water is an issue in the area and there has been a halt on any subdivisions and a ban on bores. The ban is still in place in some areas – those connected to the Berry Springs Dolostone Aquifer</li> <li>• The mine’s use of water will probably be an issue unless the mine can somehow improve the water situation</li> <li>• People do ask about Core with some concern about roads and the environment and where they will go hunting, quad biking and fishing</li> <li>• People are keen to see the prosperity of the area increase and job opportunities</li> <li>• Interested in community benefit from Core</li> </ul>
<p>Wagait Beach Supermarket, Owner</p>	<ul style="list-style-type: none"> <li>• Wagait Beach is just down the road from the mine and there is opportunity to use the ferry rather than roads</li> <li>• Would like to see local opportunities and community benefits</li> <li>• Some long term rental options in the area that Core could use</li> <li>• Questions about who would operate staff transportation busses</li> <li>• Question about who will be main employer for the mine</li> <li>• Supermarket is on the market. Have owned for 21 years and now want to sell it but stay living in the area. There could be opportunities in Wagait for transporting people from the ferry to the mine site</li> <li>• Would like to see the local community as involved as possible</li> <li>• Possible catering opportunities for the supermarket</li> <li>• Concerned about impact on water table. Community water is sourced from Charles Point but said underground aquifers all interact</li> <li>• Misunderstanding about analogies previously used to explain the mining process</li> <li>• Questions about mine site remediation</li> <li>• Said the mine is not currently a hot topic in the community but likely will be once things start up. People are active on the Wagait Beach Community Facebook page</li> <li>• Best ways to communicate locally are the ferry notice board, council, Cox Country Club, supermarket and social media</li> <li>• Belyuen is definitely up with social media and have some groups amongst themselves</li> </ul>



## Community stalls

Three community information stalls were held on the following dates, times and locations:

Saturday 15 May 2021	Sunday 16 May 2021	Tuesday 18 May
<ul style="list-style-type: none"> <li>•Wagait Beach Supermarket</li> <li>•8:30am - 12:00pm</li> <li>•35 attendees</li> </ul>	<ul style="list-style-type: none"> <li>•Berry Springs Shopping Village</li> <li>•9:00am - 12:00pm</li> <li>•15 attendees</li> </ul>	<ul style="list-style-type: none"> <li>•Berry Springs Shopping Village</li> <li>•3:00pm - 6:00pm</li> <li>•27 attendees</li> </ul>

A summary of feedback areas raised and discussed during the community information stalls from Stage 2 is listed below.

Stall	No. attendees	Key feedback areas
Wagait Beach Supermarket – 15 May	Approx. 35	<ul style="list-style-type: none"> <li>• Jobs and contracting opportunities</li> <li>• Project timeframes</li> <li>• Road safety</li> <li>• Road condition/degradation</li> <li>• Environment – water use and sources, chemicals, rehabilitation</li> <li>• Sponsorship</li> <li>• Other – shares, cultural heritage, recreation, shipping product to China</li> </ul>
Berry Springs Shopping Village – 16 May	Approx. 15	<ul style="list-style-type: none"> <li>• Local jobs and contracting opportunities</li> <li>• Project timeframes</li> <li>• Road safety</li> <li>• Environment</li> <li>• Other</li> </ul>
Berry Springs Shopping Village – 18 May	Approx. 27	<ul style="list-style-type: none"> <li>• Local jobs and contracting opportunities</li> <li>• Project timeframes</li> <li>• Road condition</li> <li>• Aboriginal employment opportunities</li> <li>• General questions about the mine and shares</li> </ul>



*Community information stalls*

### Phone and email

The project phone and email details were included on fact sheets distributed to residents on the haul route, sent to stakeholders and registered community members and displayed on posters around the impacted communities. There was little uptake of this method, with only five incoming phone calls and no emails. Of the five phone calls:

- One was from a community member who previously was involved in the Wagait Beach Progress Association, providing feedback:
  - Cox Peninsula Road is very broken up this year and people question what it will be like once road trains start
  - Suggested using the barge landing next to the jetty to transport ore to the port rather than via trucks and noted NTG is doing \$40 million upgrade to improve the jetty
  - Noted 25 per cent population growth in the past 18 months due to COVID and blocks of land that have been sitting on the market are now selling
- One person called to register for updates
- One call from Ian Sloane's electorate office
  - Explained he hasn't seen any of the lithium trucks yet but has received complaints that they don't have their lights on at night. The project team member explained the Core Lithium trucks haven't started yet
- Call from a stakeholder to organise a time to book a meeting
- One call from Warren Snowden's office to arrange a briefing.



## Analysis

### Summary

The response and feedback received about the BP33 Lithium project during Stages 1 and 2 of the stakeholder and community engagement was generally positive. Most stakeholders were positive about both the Grants and BP33 projects provided there are opportunities for locals, including jobs, contracts, the opportunity to provide services and supplies, and Core providing sponsorship and support in the local communities. Jobs and contract opportunities for local Aboriginal people and groups was also raised across both stages of the engagement.

Some who expressed support of the project also raised issues they were concerned about, including road safety and road degradation on Cox Peninsula Road, water use and sources, and there was interest in understanding the rehabilitation and closure plans for both projects.

There were some community members who were not supportive of the project mainly due to environmental concerns.

### Key themes



#### **Road safety**

Road safety was the largest concern shared by stakeholders and the community. Litchfield Council receives complaints about the safety of intersections along Cox Peninsula Road and Belyuen Council referenced people drink driving, driving unlicensed and in unregistered vehicles. Belyuen Council also noted some instances where trailers have been overturned in recent times due to issues with the road. The Wagait Shire Council raised similar concerns and said it can be hard for caravans to pass oncoming traffic currently and questioned what it would be like when road trains start, noting there is limited areas where you can pull over. The Kenbi Rangers also raised concerns about road safety as did numerous people at the community information stalls, where they talked about the increased risk of road accidents with quad road trains on Cox Peninsula Road.

#### **Local jobs and benefits**

One of the most common feedback themes between stakeholders and community members is the opportunity for local jobs and local benefits. Councils in the area are all keen to see as many jobs go to local people as possible and people in the community are readily putting their hands up to be involved.

Other stakeholders and community members queried what benefits would go back to the community and explained this is an important area for them. The Berry Springs Primary school would like to see educational benefits through Core staff talking with students at the school and the potential for Core to purchase propagated plants from the school. The Wagait Beach Supermarket is interested in potential catering opportunities and opportunities to transport workers to the site. The owner mentioned there are some houses in the community that could serve as rental opportunities



for people working at the mine. Some stakeholders raised suggestions for sponsorship of local events and community groups.

### ***Opportunities for Aboriginal employment and contracts***

Residents from Belyuen, representatives from Aboriginal organisations and other community members enquired whether there would be opportunities for local Aboriginal employment and contracts due to the proximity of the project to Belyuen, Palmerston and Darwin. Some Belyuen residents indicated that there are few job opportunities in the community and expressed interest in working on the project. Aboriginal organisations said they would like to work with Core to identify opportunities that will benefit Aboriginal people and help develop skills that are transferrable to future projects.

### ***Road degradation***

The current state of Cox Peninsula Road was often raised in conjunction with road safety concerns with many stakeholders and community members noting faults and the poor condition of the road, particularly after the most recent Wet season. Litchfield Council specifically noted residents are keen to see the road upgraded and Wagait Shire Council noted it regularly campaigns the Northern Territory Government for upgrades. Stakeholders and community members feel the condition of the road will get progressively worse with the addition of the haul trucks.

### ***Contribution to the local economy***

People who visited the community information stalls were generally positive about the project and noted it will be good for the local economy. Litchfield Council mirrored this sentiment and is keen to see the project start and the trickle down benefits for local people in the area.

### ***Impacts to water***

Two stakeholders and a number of community members who attended an information stall raised concerns about impacts to water in the area. The owner of the Wagait Beach Supermarket was concerned about how the project's use of water will impact the community's local supply and explained this concern stems from not knowing how the aquifers interact. Core representatives explained that geologists use scientific methods to study and monitor the aquifers and water sources and that the primary source of water for the project will be water from Observation Hill Dam. Litchfield Council explained water is an issue in the area and spoke about how there is a halt on new subdivisions and ban on new bores in certain areas due to limited supplies in the Dolostone Aquifer. The Council feels water will be an issue for the community unless Core can somehow improve the current situation. One stall visitor thought the tailings would contaminate the water table when water levels rise, a couple asked about the impacts to the water table and a number queried where the project will source its water. One person who attended the stall said their family regularly swims at Observation Hill Dam and explained it is their only local waterhole. Other stakeholders said they are not aware of community use at the dam.



## Recommendations

The following recommendations are made following the stakeholder engagement:

- Core to note the feedback received from stakeholders and the community and incorporate into project planning, specifically noting:
  - impacts to road safety
  - contribution to road degradation along Cox Peninsula Road
  - ways to improve or reduce the impact of road safety concerns such as well-lit road trains and ample signage about road trains
  - employ locals where possible and uphold commitment for limited FIFO jobs
  - continue to engage with local Aboriginal organisations to develop work and contract opportunities for local Aboriginal people
  - consider opportunities for community benefits such as those suggested by stakeholders during this engagement.
- Develop and implement an overarching communication and engagement plan to guide ongoing conversations with the community and stakeholders for the life of the Finnis Lithium Project
- Continue to communicate and engage with stakeholders (particularly at key milestones such as the submission of the EIS) to ensure they are kept informed and can comment.



## Appendices

### Appendix 1 – Materials

- a. Fact sheet: Finniss Lithium Project July 2020
- b. 2020 online presentation
- c. Fact sheet: Finniss Lithium Project Update May 2021
- d. Poster
- e. 2021 presentation
- f. Maps
- g. Letter to residents
- h. Social media graphics and supplied content

### Appendix 2 – Stage 1 engagement report

Core Lithium is an Australian resources company with 100% ownership of the Finniss Lithium Project. The Finniss Lithium Project covers more than 500 square kilometres on the Cox Peninsula and includes several high-grade lithium deposits including the Grants Lithium Project, the proposed BP33 Lithium Project and other exploration prospects.

## GRANTS LITHIUM PROJECT

In April 2020, Core received approval from the Northern Territory Government for open pit mining and processing of lithium ore at its Grants Lithium Project, 36 kilometres west of Berry Springs. Since then, the government has approved an expansion of the Grants Lithium Project to include processing of lithium ore from the nearby BP33 deposit, which will extend the life of the operating facility at the Grants Lithium Project from three to seven years. Some of the changes to the Grants Lithium Project as a result of this include:

- ✓ water will be drawn from Observation Hill Dam for the life of the Grants Project
- ✓ extending the life of the site's dam from three to seven years
- ✓ extending the timeframe for trucking of ore from the Grants Project to Darwin Port from three to seven years
- ✓ closure and rehabilitation of the Grants Project in seven years
- ✓ employing workers for four more years.

# Finniss Lithium Project Update

MAY 2021

**If you have questions or feedback about the projects, please come along to one of the community information stalls at:**

- ✓ **Wagait Beach Supermarket:**  
Saturday 15 May, 8.30am – 12 noon
- ✓ **Berry Springs Shopping Village:**  
Sunday 16 May, 9am – 12 noon
- ✓ **Berry Springs Shopping Village:**  
Tuesday 18 May, 3pm – 6pm.

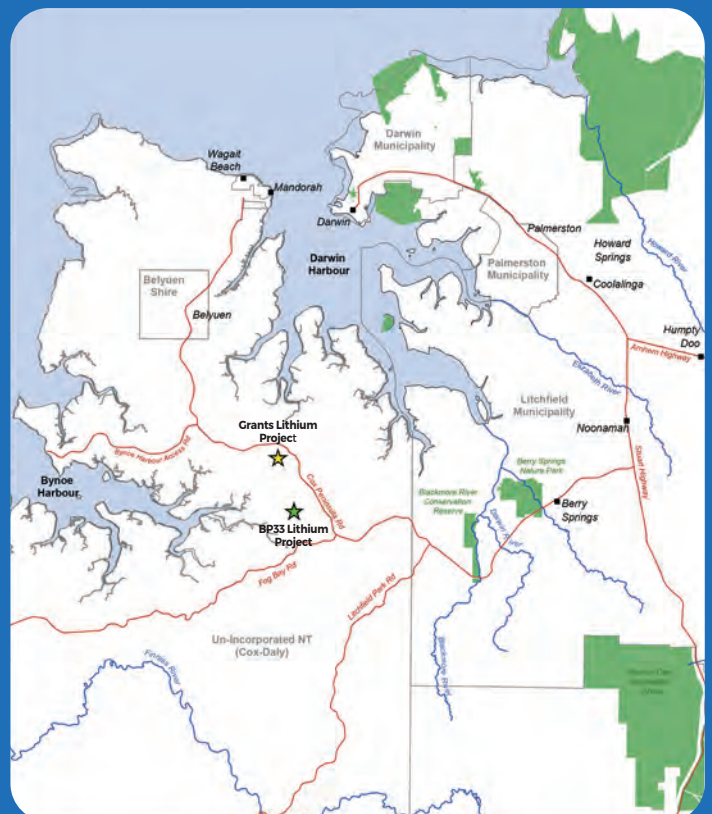


Figure 1 - Map of project location

## BP33 LITHIUM PROJECT

Core Lithium's BP33 site is 33 kilometres west of Berry Springs and 2.5 kilometres south-west of Cox Peninsula Road. The BP33 site contains 2.3 million tonnes of pegmatite, a granite type rock containing spodumene (a source of lithium). Development of the BP33 site will involve underground mining and trucking the ore to the Grants Lithium Project processing plant via a 7.5 kilometre purpose-built internal haul road.

### The proposed BP33 Lithium Project involves the following:

- ✓ Excavating a box-cut portal over six hectares (see Figure 2) to about 60 metres deep. This is a small open cut that provides an entrance to the underground mine.
- ✓ Construction of a 450-metre long decline from the bottom of the box-cut to the top of the ore deposit. As the ore is removed, construction of the decline continues down another 5.4 kilometres over the life of the mine.
- ✓ Two temporary waste rock dumps at the site will store the waste rock removed from the box-cut and underground. This material will be used to fill in the box-cut and mined area at the end of operations.
- ✓ Construction of a dam to store water that will be used to minimise dust and supply the mine site facilities, and construction of a separate dam to store and treat water containing sediment.
- ✓ Construction of site infrastructure, including a contractor's area, internal access roads and drainage infrastructure and run of mine (ROM) pad.
- ✓ The contractor's area will include office and staff facilities, laydown and storage areas, a maintenance workshop, fuel storage and refuelling and power generators.
- ✓ Construction of a 7.5 kilometre dedicated haul road over existing tracks between the BP33 site to the Grants Lithium Project site.
- ✓ Underground mining of the BP33 resource over about four years.
- ✓ Trucking the mined ore about 7.5 kilometres along a dedicated haul road to the Grants processing plant.
- ✓ Processing of the mined ore at the Grants Lithium Project site and transporting the resulting concentrate to the Darwin Port.

## JOBS AND CONTRACTS

Over the life of the Grants and BP33 projects, Core expects to employ up to 250 people.

Grants Project construction:	Up to 250 jobs
Grants operations:	A peak of 150 - 180 jobs
BP33 Project construction:	Up to 60 jobs (no longer than 12 months)
BP33 Project operations:	50 - 80 jobs

Core will employ as many local workers as possible. There will be no on-site accommodation camp, with workers expected to travel to and from site for each shift.

Core wants to maximise local jobs and business contracts and will encourage its head contractors to use local businesses.

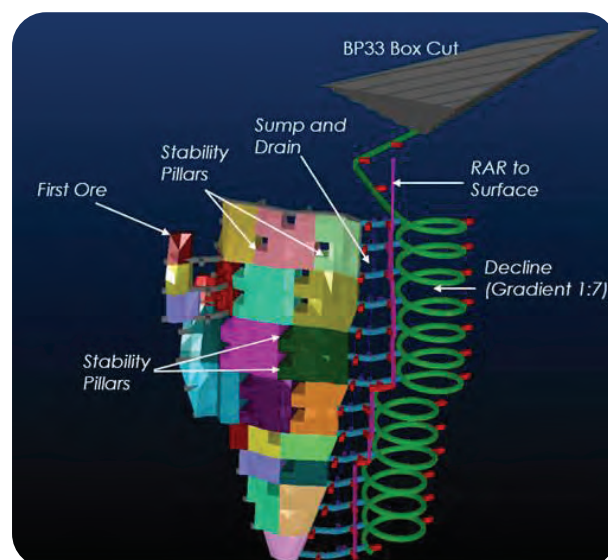


Figure 2 - Concept of a box cut portal



Figure 3 - Map of BP33 site footprint and preliminary layout

## WATER USE AND SOURCES

The combined projects will need about 2000 kilolitres of water a day for mining, dust suppression and for processing at Grants.

Water for the Grants Project will be pumped about five kilometres from Observation Hill Dam via a pipeline, to the project's raw water dam. Other water sources will include groundwater and rainfall that flows into the open pit and a small mine site dam that will be constructed next to the mine. Core has applied to the Northern Territory Government for a surface water extraction licence.

The BP33 Project will use surface water (rainfall run-off) and, subject to approval, groundwater from the BP33 underground mine. The mine is not connected to the Berry Springs Dolostone aquifer, which is subject to the Berry Springs Water Allocation Plan.

## TRAFFIC AND ROAD SAFETY

### ROAD CLOSURES

Core consulted with the public in 2017 and 2018 about the Grants Lithium Project and advised that there could be some short, temporary closures of Cox Peninsula Road during blasting at the Grants project site. The road closures for blasting will be for about 10 minutes and will be for the first six months of the project. Core has made the following commitments for Grants Lithium Project blasting times and road closures to minimise impacts to locals. Core will:

- ✓ restrict blasting times and road closures to minimise disruptions to other road users
- ✓ not close roads on weekends, public holidays or during peak traffic periods
- ✓ notify people from Belyuen and Wagait Beach two days before any blasting operations and road closures and consult with these communities on the best process for notifying them
- ✓ place signs on Cox Peninsula Road to provide advance notice to drivers of proposed blasting times and road closures
- ✓ ensure emergency vehicles have access during any road closures.

The BP33 project will not require any road closures.

### ROAD SAFETY

There will be up to ten return road train trips a day between the Grants Lithium Project site and Darwin Port via Cox Peninsula Road and the Stuart Highway, for seven years. Core will do the following things to keep the roads as safe as possible:

- ✓ limit haul truck speeds to 40km/hr within the Berry Springs school precinct
- ✓ restrict truck movements past the school during peak school traffic periods
- ✓ monitor haul truck speed and driver behaviour via monitoring systems
- ✓ provide park and ride busses for staff
- ✓ create a slip-lane at the intersection of Cox Peninsula Road and the Grants mine site entrance to enable safe entry and exit of trucks from the site.

## REHABILITATION AND CLOSURE

When mining operations finish, all mining infrastructure will be removed from the sites and the areas rehabilitated as per the mine closure plans. The material in the Grants waste rock dump will be used to enclose the tailings storage facilities and the remaining mound will be shaped to provide a surface that is resistant to erosion and can be planted with groundcover species. The open pit will be left to form a pit lake, which will be surrounded by an earth bund for safety to prevent vehicles, people or animals accidentally falling in. Core will decommission the mine site dam but leave Observation Hill Dam as it is an existing dam.

Once mining ends at BP33, the underground mine and box-cut will be completely backfilled. No waste material will remain on the surface. The area will be rehabilitated and restored to its pre-mining state. Core will undertake ongoing rehabilitation, erosion and water monitoring.

The mine site landforms will be stabilised and replanted with species native to the area. Core will be responsible for protecting the sites from fire, undertaking weed control and monitoring water quality and regeneration of vegetation in the rehabilitated areas. These activities will continue until the rehabilitation criteria for the site are met. Core is required to pay a security bond to the Northern Territory Government before the start of mining, which will not be returned until the rehabilitation criteria are met.

## TIMING

Construction for the Grants Project is expected to start in the second half of this year, with production starting in 2022.

Subject to approvals, construction of the BP33 mine is expected to start in 2023. Operations at BP33 will begin after the Grants ore deposit is exhausted.

## FEEDBACK

In September 2020, the Northern Territory Environment Protection Authority (NT EPA) decided that the BP33 Lithium Project requires an environmental impact assessment. Core plans to submit the Supplementary Environmental Report (SER) to the NT EPA in mid 2021. The report will be available on the NT EPA website and open for public comment for 25 business days.

Core is consulting with the community and stakeholders in the lead up to the SER and welcomes any feedback on the project.

## CONTACT

If you have questions or feedback about the project, please contact:

**P.** 08 8981 6445

**E.** [feedback@truenorthcomm.com.au](mailto:feedback@truenorthcomm.com.au)

### OR

For all employment applications please send your resume to [hr@corelithium.com.au](mailto:hr@corelithium.com.au). Additional recruitment information will be posted on the Core Lithium website in the coming months.

**CORE**  
LITHIUM

For all other enquiries please contact the Core Lithium office via email at [info@corelithium.com.au](mailto:info@corelithium.com.au)

[corelithium.com.au](http://corelithium.com.au)

# Finniss Lithium Project

## COMMUNITY INFORMATION STALLS

Core Lithium is proposing to expand its Finniss Lithium Project on the Cox Peninsula to include the nearby BP33 deposit.

Representatives from Core will be hosting three community information stalls to provide information and updates on the project, answer any questions and hear your feedback.

### Wagait Beach Supermarket

Saturday 15 May  
8:30am – 12:00pm

### Berry Springs Shopping Village

Sunday 16 May  
9:00am – 12:00pm

### Berry Springs Shopping Village

Tuesday 18 May  
3:00pm – 6:00pm

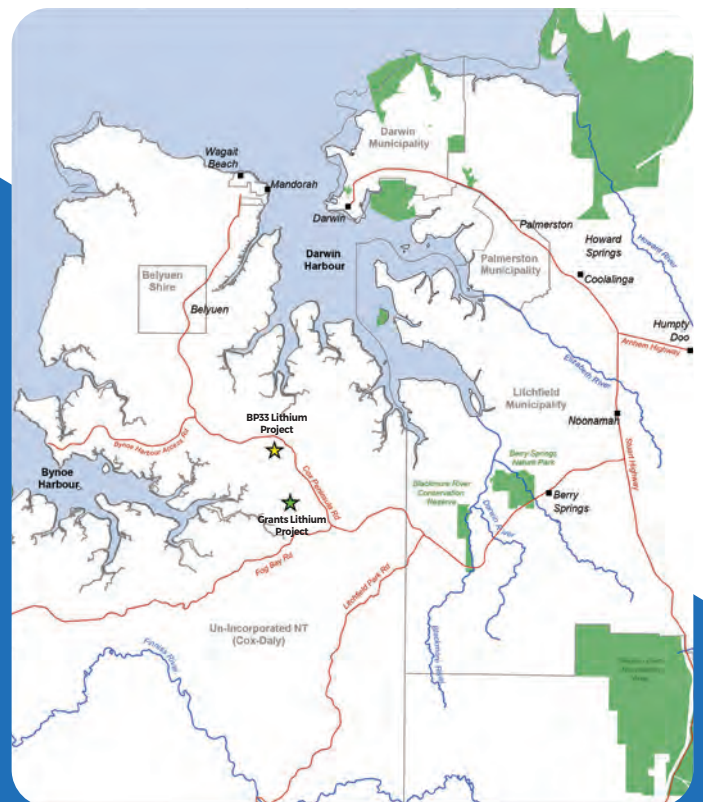


Figure 1 - Map of project location

For more information about the project scan the below QR code:



Visit: [www.corelithium.com.au](http://www.corelithium.com.au)

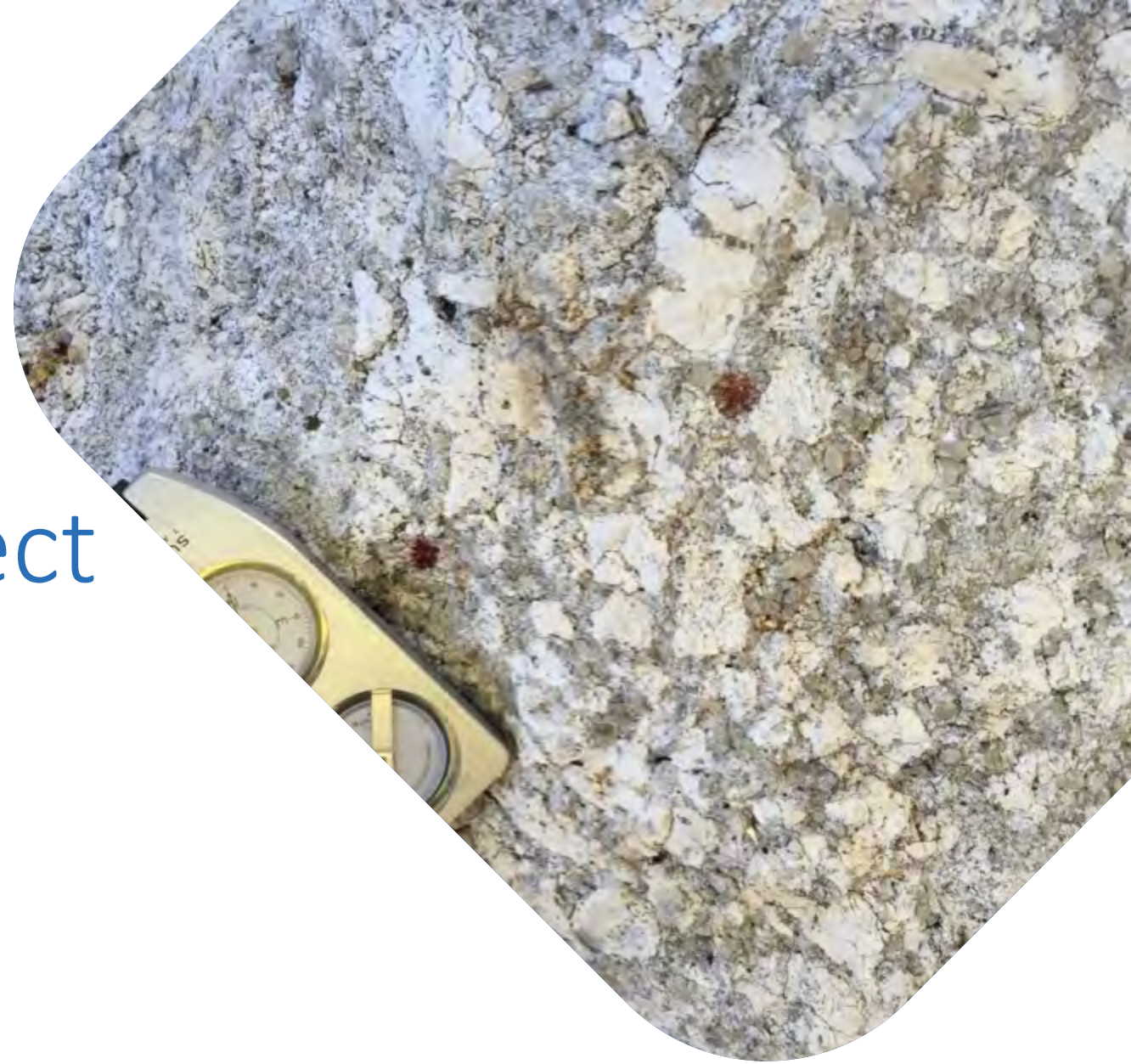
Call: 8981 6445

Email: [feedback@truenorthcomm.com.au](mailto:feedback@truenorthcomm.com.au)



# Finniss Lithium Project

May 2021



# Overview

- **Finniss Lithium Project**
  - BP33 Project
  - Grants Project
  - Other exploration tenements in the region
- 35 km west of Berry Springs, 32 km south of Darwin
- **April 2020:** Core received approval for open pit mining and processing of 1.8 million tonnes of lithium ore at its Grants Lithium Project
- NT EPA approved the Notice of Variation to extend life of the operating facility at Grants, to process ore from BP33
- **September 2020:** Northern Territory Environment Protection Authority (NT EPA) decided BP33 Lithium Project requires an environmental impact assessment
- **Mid 2021:** Supplementary Environmental Report (SER) submission
- Core is consulting with the community and stakeholders on the BP33 project and welcomes any feedback.



# BP33 Project

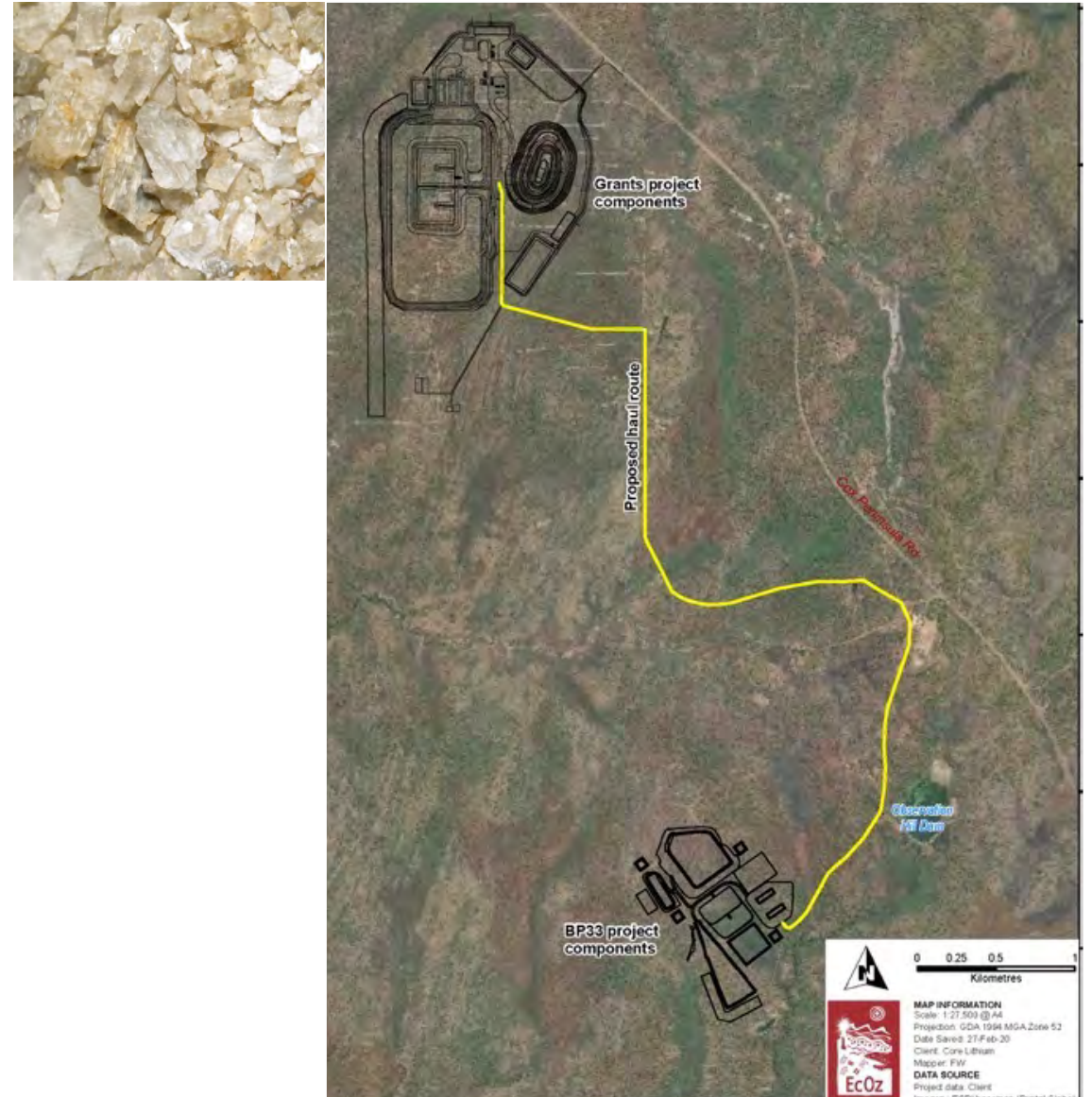
## Overview

### Mining and processing

- Underground mining of the resource over approximately four years, via box-cut and portal
- Transport mined ore 7.5 kilometres via internal haul road to the Grants processing plant
- Ore processed at the Grants Lithium Project site
- Transport concentrate product to Darwin Port

### Capital Expenditure

- Expected capital expenditure is \$45 million.

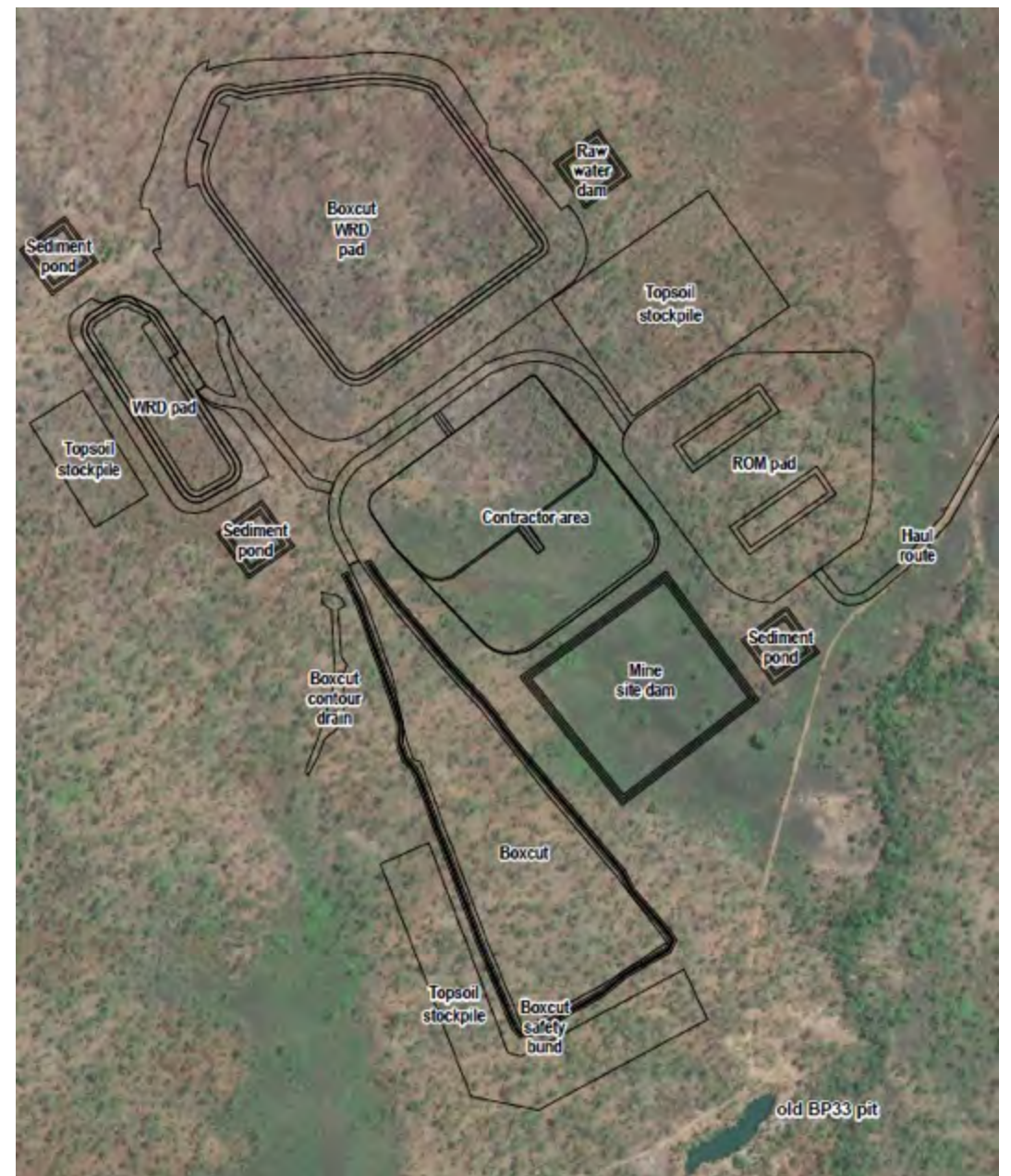


# BP33 Project

## Preliminary mine design and layout

### Mine design

- 88 hectares
- Underground mine via box-cut and portal
- Two onsite waste rock dumps for temporary storage of waste rock
- Construction of two dams
- Site infrastructure:
  - contractor area – office and staff facilities, workshop, storage facilities, power generators, internal access roads and drainage infrastructure and Run of Mine (RoM) pad
- A 7.5 kilometre dedicated haul road between the BP33 site to the Grants Lithium Project site.



# BP33 Project

## Water use and resources

- 1047 kilolitres of water per day
- Water sources - surface water and ground water from:
  - Observation Hill Dam catchment in-flows
  - Water from underground mine
  - Groundwater and rainfall in-flows
  - Water pumped from old mine pits
  - Burrell Creek Groundwater aquifer (subject to approval) – no connection to Berry Springs Dolostone aquifer which is subject to the Berry Springs Water Allocation Plan.



# BP33 Project

## Environmental management

### Weed management

- Weed Management Plan in line with DEPWS guidelines
- Prevent and manage weeds throughout the project including post-closure

### Waste Rock Dumps

- Two waste rock dumps for temporary storage of waste rock
- The waste rock dump material will be used to backfill the box-cut on mine closure
- On completion of mining, there will be no material remaining on the surface

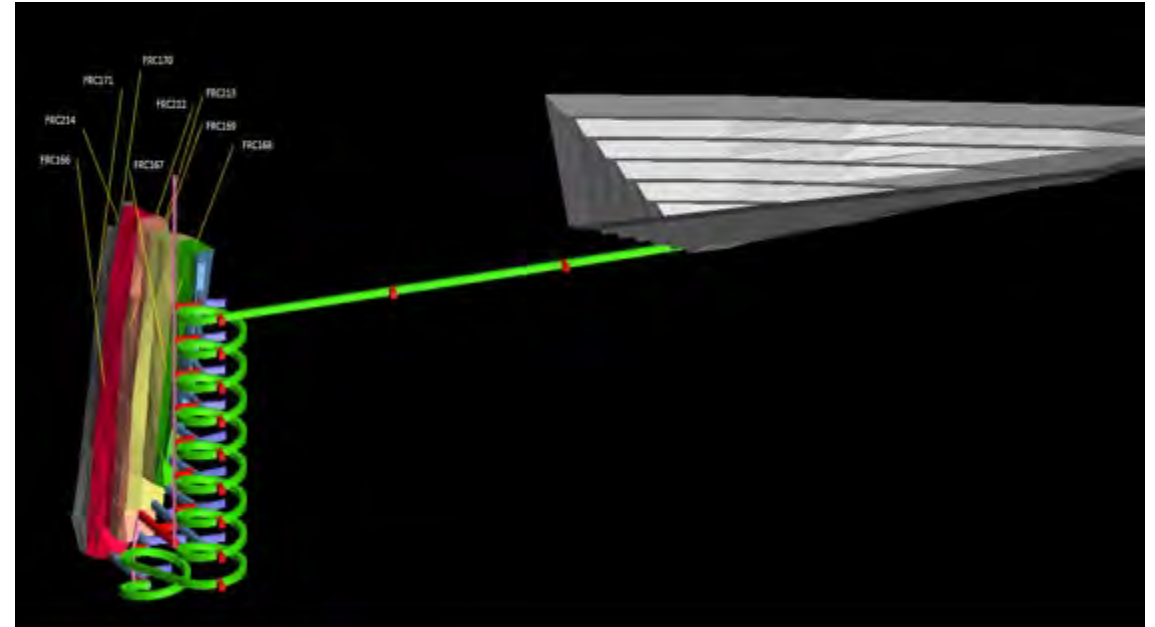
### Water discharge

- Observation Hill Dam - storage and water supply dam. In high rainfall events, surplus wastewater will flow via an ephemeral creek into the Charlotte River
- A wastewater discharge licence (WDL) will be applied for under the *Water Act* through the NT EPA.

# BP33 Project

## Rehabilitation and closure

- On completion, the underground mine and box-cut will be completely backfilled, and no waste material will remain on the surface
- All mining infrastructure will be removed
- The area will be rehabilitated and restored to its pre-mining state. Core will undertake ongoing rehabilitation, erosion and water monitoring until rehabilitation criteria for the site are met.



# Cox Peninsula Road – Traffic and Road Safety

- Core will conduct a road condition survey before starting any work
- The BP33 project will extend the timeframe for trucking of ore from the Grants Project site to Darwin Port from three years to seven years
- Up to ten return road train trips a day between the Grants Lithium Project site and Darwin Port via Cox Peninsula Road and the Stuart Highway, for seven years.
- Core will:
  - limit haul truck speeds to 40km/hr within the Berry Springs school precinct
  - restrict truck movements past the school during peak school traffic periods
  - monitor haul truck speed and driver behaviour via monitoring systems
  - provide park and ride busses for staff
  - create a slip-lane at the intersection of Cox Peninsula Road and the Grants mine site entrance to enable safe entry and exit of trucks from the site.



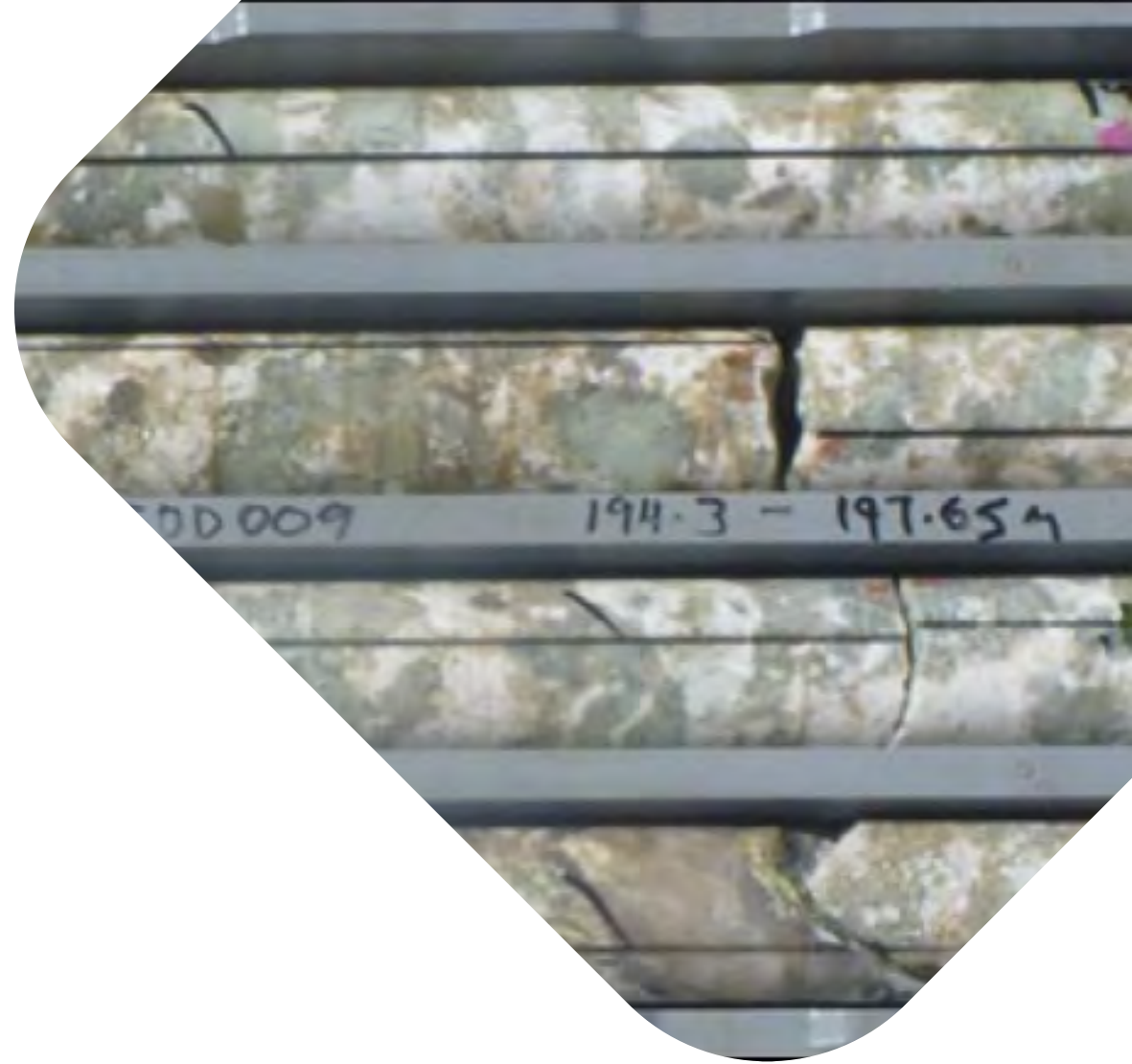
# Cox Peninsula Road – Temporary Road Closures

- In 2017-2018, Core consulted with the public about the Grants Lithium Project
- Some short, temporary closures of Cox Peninsula Road during blasting at the Grants project site
- Core will:
  - restrict blasting times and road closures to minimise disruptions
  - not close roads on weekends, public holidays or during peak traffic periods
  - notify people from Belyuen and Wagait Beach two days before any blasting operations and road closures and consult with these communities on the best process for notifying them
  - place signs on Cox Peninsula Road to provide advance notice of closures
  - ensure emergency vehicles have access during any road closures
- The BP33 project will not require any road closures.

# Employment and contracts

## Employment

- The BP33 Lithium Project will generate:
  - Construction: Up to 60 jobs
  - Operations: 50 – 80 jobs
- Core will employ as many local workers as possible
- No on-site accommodation camp
- Workers will travel to and from site for each shift
- Core wants to maximise local jobs and business contracts and will encourage its head contractors to use local businesses.
- Belyuen is the closest community to the project area
- Core has committed to working with Indigenous employment and training providers to maximise employment of people from Belyuen and the broader region.



# Timeframes

- Construction for the Grants Project is expected to start in the second half of this year, with production starting in 2022
- Subject to approvals, construction of the BP33 mine is expected to start in 2023. Production at BP33 would begin once the Grants resource is exhausted and mining ceases at Grants
- BP33 mine life - three to four years:
  - Construction - 6 months
  - Production - 44 months
  - Mine closure and rehabilitation – 5 months
  - Post-closure monitoring – ongoing.



Thank you

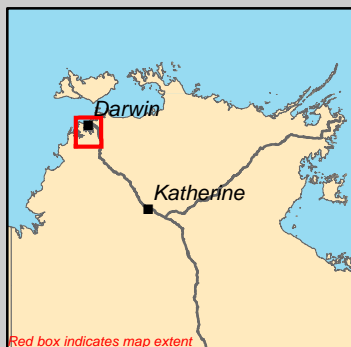
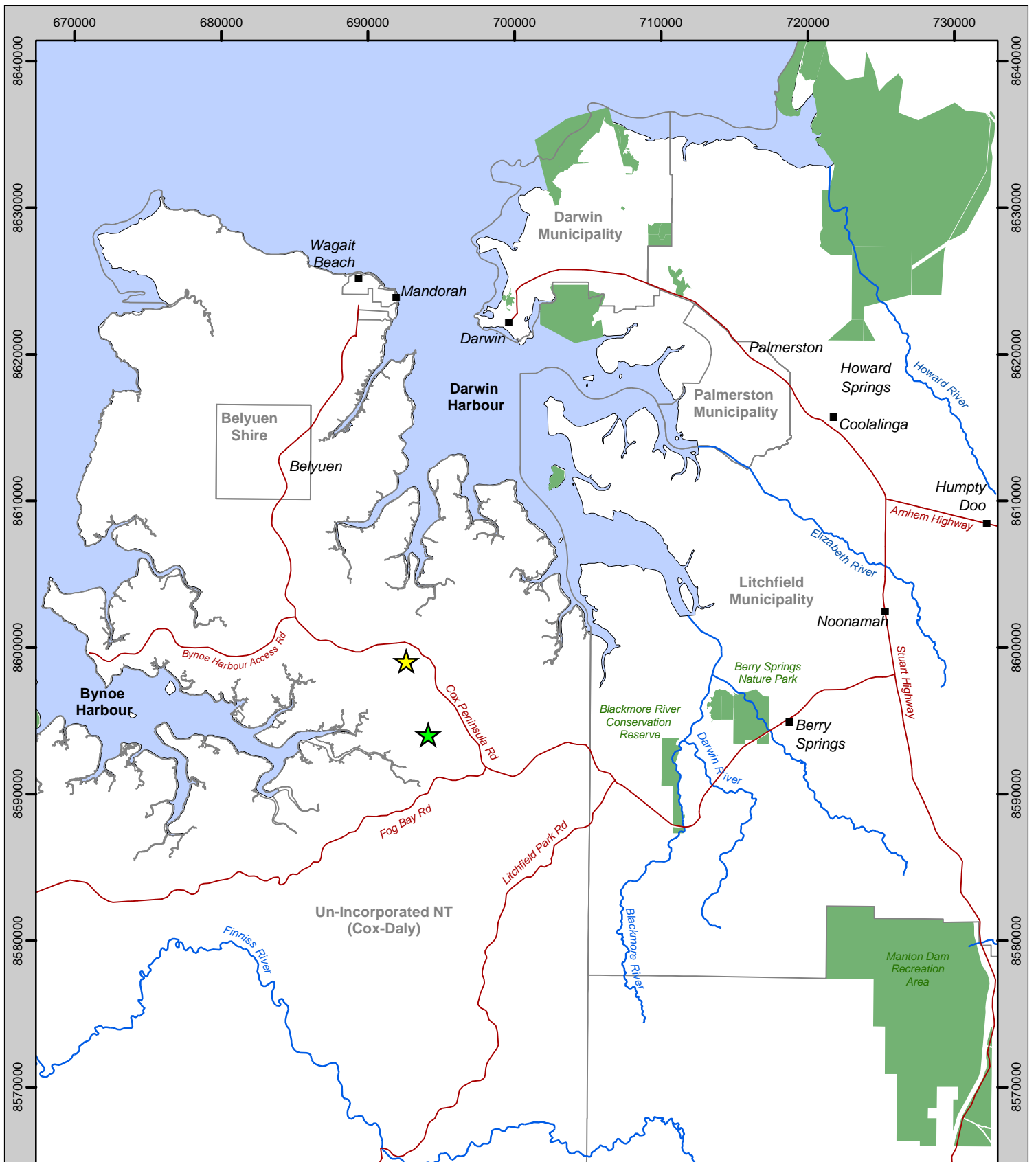
For more information please contact the Core Lithium office on:

Phone: 08 8317 1700

Email: [info@corelithium.com.au](mailto:info@corelithium.com.au)

[www.corelithium.com.au](http://www.corelithium.com.au)



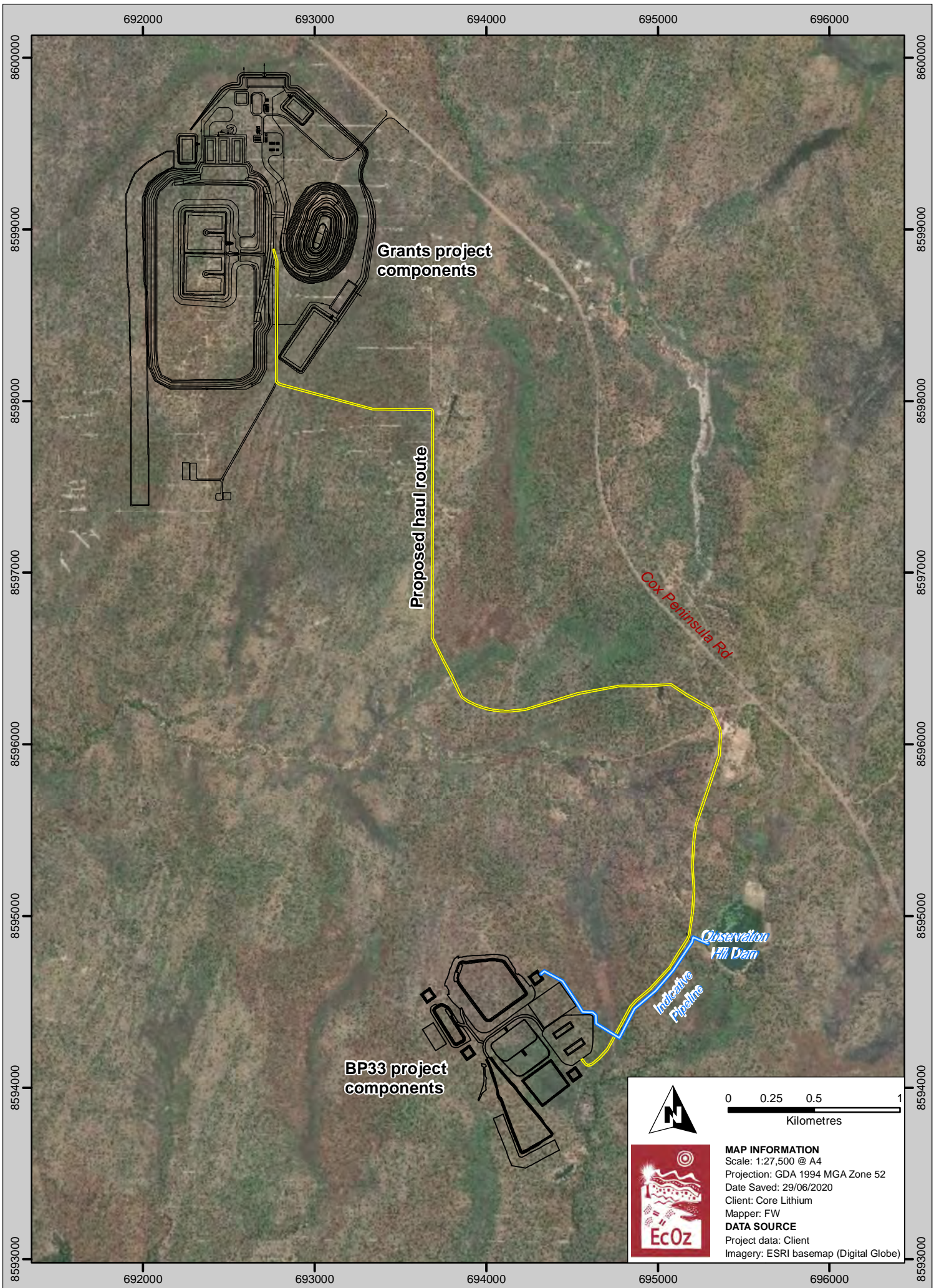


Project data	Background data
★ BP33 project location	■ Locality
★ Grants project location	— Road
	— Watercourse
	■ Conservation reserve
	□ Municipality boundary

**MAP INFORMATION**  
 Scale: 1:354,219 @ A4  
 Projection: GDA 1994 MGA Zone 52  
 Date Saved: 07-Feb-20  
 Client: Core Lithium  
 Mapper: FW

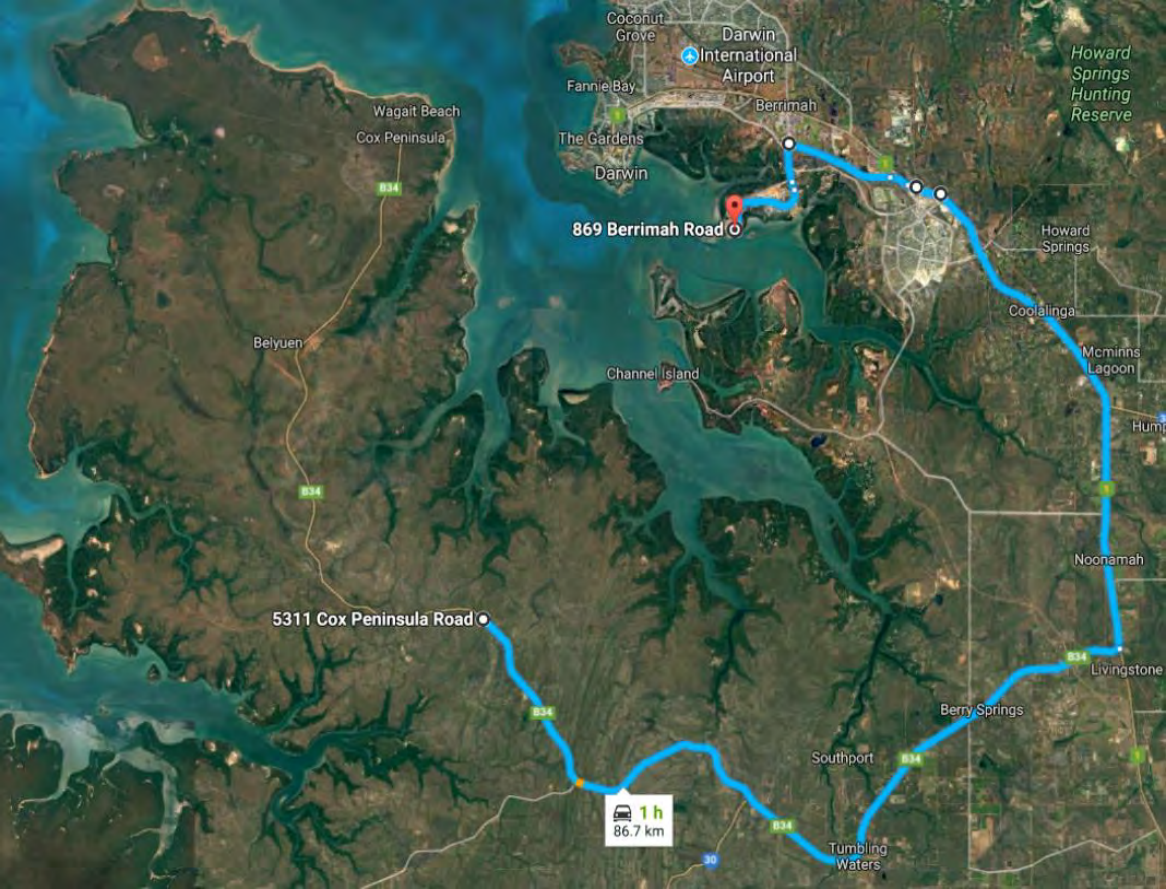
**DATA SOURCE**  
 Mineral lease: Client  
 Topographic data: Geoscience Australia

**Figure 1-1. Map of project location**



Path: Z:\01 EcOz\_Documents\04 EcOz Vantage GIS\EZ19171 - BP33 NOI\01 Project Files\Report maps\Figure 3-4. Map of haul route from BP33 to Grants.mxd

**Core Lithium - Finnis Lithium Project - Grants and BP33 mines**



Coconut Grove  
Darwin  
International Airport

Howard Springs Hunting Reserve

Wagait Beach  
Cox Peninsula

Fannie Bay  
The Gardens  
Darwin  
Berrimah

869 Berrimah Road

Howard Springs

Belyuen

Channel Island

Coolalinga

Mcminns Lagoon

Noonamah

5311 Cox Peninsula Road

Livingstone

Berry Springs

Southport

1 h  
86.7 km

Tumbling Waters

28<sup>th</sup> April 2021

Dear Resident,

**RE: Finniss Lithium Project – Transport Route**

Core Lithium is an Australian resources company that owns the Finniss Lithium Project, which includes the approved Grants Lithium Project and the proposed BP33 Lithium Project and other prospects on the Cox Peninsula.

As outlined in the attached fact sheet, Core Lithium plans to start construction of its Grants Lithium Project later this year, with operations at the mine expected to start in 2022.

After operations start at the Grants Lithium Project, up to 10 road trains per day will complete the return trip between the mine site and the Darwin Port via Cox Peninsula Road and the Stuart Highway. The trucks will operate 24 hours a day, seven days a week. This transportation of the processed ore is expected to continue for seven years.

As outlined in the fact sheet, Core will have a number of measures in place to ensure road safety, particularly around the Berry Springs school precinct. Truck drivers will be briefed on general hazards along the route and specific areas for additional caution. The trucks will be fitted with in-vehicle management systems that track speed, fatigue and driver behaviour in real time.

Core will conduct a pavement condition report before starting the project, and Core will repair any damage to the road as a result of the project.

As a resident in the area, we encourage you to contact our project team if you have any questions or concerns about the project. We will have information stalls in Berry Springs and Wagait Beach (see fact sheet for details) if you would like to discuss the project further, or you can call 08 8981 6445 or email [feedback@truenorthcomm.com.au](mailto:feedback@truenorthcomm.com.au)

Yours sincerely,

Blair Duncan.

Chief Operating Officer, Core Lithium.

## Core Lithium – Finniss Lithium Project Facebook posts

The following Facebook posts can be sent to stakeholders requesting them to share on their social media pages to engage their existing networks. Stakeholders include:

- Litchfield Council
- Litchfield Council elected members
- Wagait Shire Council
- Wagait Shire Council elected members
- Berry Springs and Darwin River Community (Facebook group – need to message admin to post)
- Member for Daly Ian Sloan
- Wagait Beach Supermarket
- Wagait Beach Community (Facebook group – need to message admin to post).
- Berry Springs Primary School
- Dundee Progress Association (Facebook group – need to message admin to post)
- Berry Springs Shopping Village
- Cox Country Club
- Dundee Social & Recreation Club

Date	Copy	Visual
4/4/21	<p>Core Lithium wants to provide updates to the community and hear your feedback about its Finniss Lithium Project which includes the approved Grants Lithium Project and the proposed BP33 Lithium Project.</p> <p>Core is hosting three community information stalls where you can hear about the project, ask questions and provide feedback.</p> <p>Detailed information about the project is available at <a href="https://corelithium.com.au/company-news">https://corelithium.com.au/company-news</a>.</p>	<ol style="list-style-type: none"> <li>1. Wagait Beach Supermarket: Sat 15 May, 8:30am – 12:00pm</li> <li>2. Berry Springs Shopping Village: Sun 16 May, 9:00am – 12:00pm</li> <li>3. Berry Springs Shopping Village: Tues 18 May, 3:00pm – 6:00pm</li> </ol> <p>Ph: 8981 6445 E: <a href="mailto:feedback@truenorthcomm.com.au">feedback@truenorthcomm.com.au</a></p>
14/4/21	<p>The first community information stall about the Finniss Lithium Project is on tomorrow morning.</p> <p>Representatives from Core Lithium will be at the Wagait Beach Supermarket to talk with you about the project.</p>	Same graphic as above

	<p>Your feedback will help inform the Social Impact Assessment. You can find more information on the project at <a href="https://corelithium.com.au/company-news">https://corelithium.com.au/company-news</a>.</p>	
15/4/21	<p>Come to the Berry Springs Shopping Village tomorrow and on Tuesday to find out more about the Finniss Lithium Project.</p> <p>Core Lithium can talk to you about the project, answer your questions and would like to hear your feedback.</p> <p>More information can be found at <a href="https://corelithium.com.au/company-news">https://corelithium.com.au/company-news</a>.</p>	Same graphic as above (minus the Wagait Beach line)
18/4/21	<p>Core Lithium will be at the Berry Springs Shopping Village this afternoon.</p> <p>Core is proposing to expand its Finniss Lithium Project to include the nearby BP33 deposit.</p> <p>A Social Impact Assessment will be prepared after Core has engaged with stakeholders and the local community.</p> <p>Come down this afternoon to find out more about the project and provide your feedback.</p> <p>More information can be found at <a href="https://corelithium.com.au/company-news">https://corelithium.com.au/company-news</a>.</p>	Same graphic as above



**Postal Address** GPO Box 1261, Darwin NT 0801

**Street Address** Office 3, Level 1 Northgate Plaza, 101 Mitchell Street, Darwin NT

**P** 08 8981 6445 | **E** [truenorth@truenorthcomm.com.au](mailto:truenorth@truenorthcomm.com.au) | **ABN** 43 108 153 199

[www.truenorthcomm.com.au](http://www.truenorthcomm.com.au)



## **Finniss Lithium Project**

### **COMMUNITY INFORMATION STALLS**



**Wagait Beach Supermarket - Sat 15 May**

8:30am – 12:00pm



**Berry Springs Shopping Village - Sun 16 May**

9:00am – 12:00pm



**Berry Springs Shopping Village - Tues 18 May**

3:00pm – 6:00pm

P: (08) 8981 6445

E: [feedback@truenorthcomm.com.au](mailto:feedback@truenorthcomm.com.au)



## Finniss Lithium Project

### COMMUNITY INFORMATION STALLS



*Wagait Beach Supermarket - Sat 15 May*

*8:30am – 12:00pm*



**Berry Springs Shopping Village - Sun 16 May**

9:00am – 12:00pm



**Berry Springs Shopping Village - Tues 18 May**

3:00pm – 6:00pm

P: (08) 8981 6445

E: [feedback@truenorthcomm.com.au](mailto:feedback@truenorthcomm.com.au)



## Finniss Lithium Project

### COMMUNITY INFORMATION STALLS



*Wagait Beach Supermarket - Sat 15 May*

*8:30am – 12:00pm*



*Berry Springs Shopping Village - Sun 16 May*

*9:00am – 12:00pm*



**Berry Springs Shopping Village - Tues 18 May**

**3:00pm – 6:00pm**

P: (08) 8981 6445

E: [feedback@truenorthcomm.com.au](mailto:feedback@truenorthcomm.com.au)