

New Marine Facilities to Service
Mandorah and Cox Peninsula

APPENDIX

B

ECOLOGY DATABASE SEARCH
RECORDS

Darwin Harbour

Location and Description

Darwin Harbour is a large indented embayment with three main arms – East, Middle and West. Two major rivers, the Elizabeth and Darwin Rivers drain into the Harbour and the city of Darwin is located on the north-eastern shore. The shoreline is dominated by mangroves, which largely remain in undisturbed condition and the Site contains more than 5% of the Northern Territory's entire mangrove area. Darwin Harbour has one of the richest coastal environments anywhere in the Asia Pacific region, and occurs within one of the world's least impacted marine regions. The coastal and mangrove environments are backed by savanna woodlands and patches of monsoon rainforest.

Tenure and Land Use

The Darwin Harbour Site, especially its west and south-west portions, is predominantly vacant Crown land. The remainder is mostly freehold land associated with the cities of Darwin and Palmerston. The land uses within the Site are many and varied - the freehold portions support a mix of commercial, residential and industrial land uses. The Harbour has port facilities and supports tourism, recreation and aquaculture. Approximately 3% of the Site is managed as conservation reserves.

Significance Rating

International Significance

Ecological Values

Darwin Harbour supports a range of estuarine, freshwater and terrestrial environments including extensive areas of tidal mudflats and one of the largest and most diverse areas of mangroves in the Northern Territory. The mangroves of Darwin Harbour support a highly specialised fauna and 14 bird species that are entirely restricted to mangrove environments (e.g. Chestnut Rail, White-breasted Whistler and Mangrove Golden Whistler). The Harbour itself supports a diverse range of marine species including dugongs, dolphins, marine turtles and a large variety of fish. A total of 15 threatened species are reported from within the Site.

Management Issues

Future urban and industrial developments around Darwin Harbour represent a major management issue for this Site. The north-eastern part of Darwin Harbour catchment is already highly developed and native vegetation and tidal flats have been cleared and drained. Further major industrial developments around Middle Arm are currently



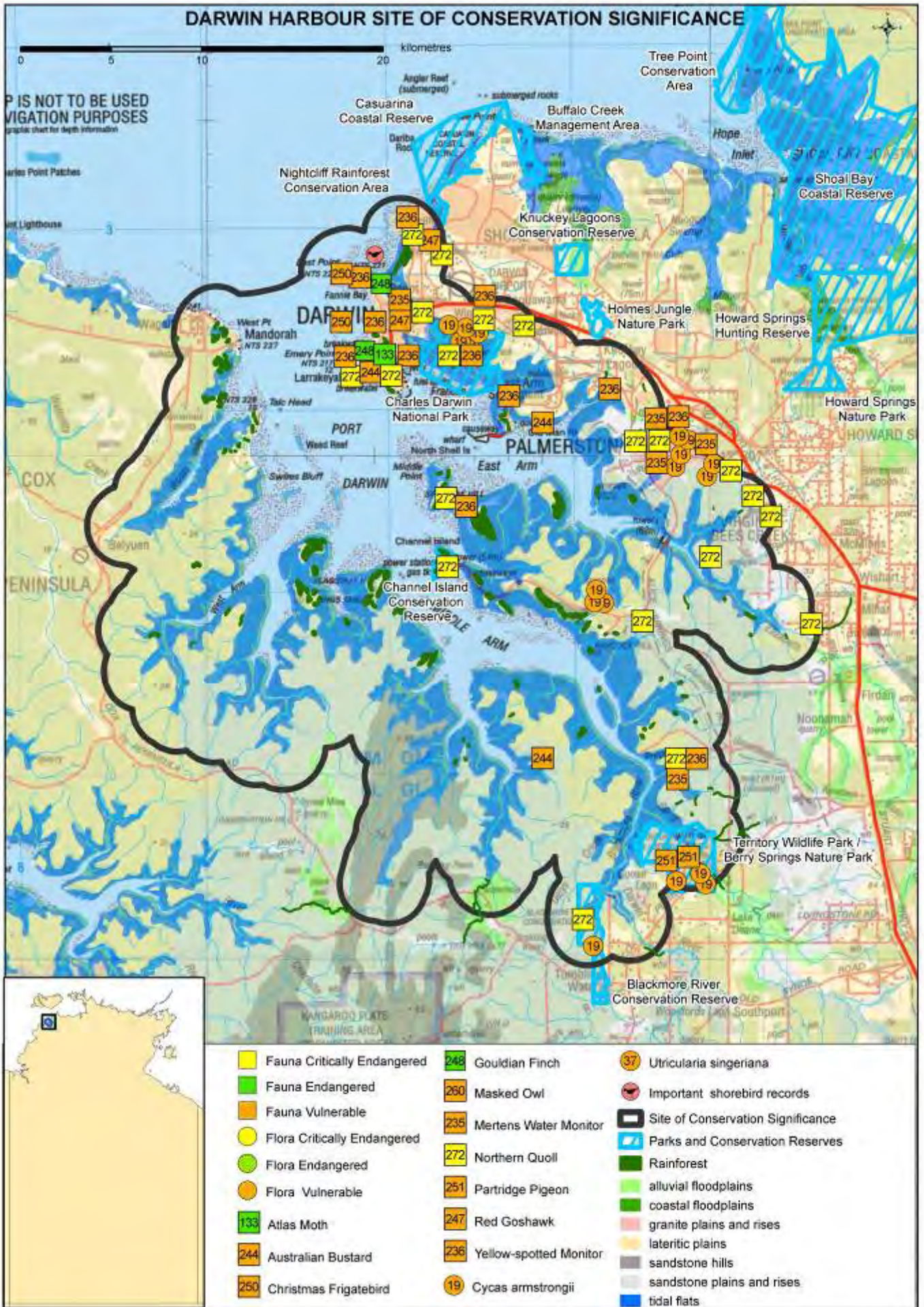
being considered. Water pollution from run-off and industry and sea-level rise will also potentially affect the Harbour environment.

Condition

In comparison with marine areas near other major cities, Darwin Harbour is in good condition. However, a range of human activities do impact on the marine and coastal environments and these are likely to intensify in future years.

Current Conservation Initiatives

A regional plan of management has been developed for Darwin Harbour and its catchment area, and priority actions are being implemented. Ecosystem monitoring and research groups have been established to direct strategic research and co-ordinate monitoring activities within the Harbour.



DARWIN HARBOUR - SITE OF CONSERVATION SIGNIFICANCE

LOCATION	SOCS Number	6 (NT Parks and Conservation Masterplan Map Number 12)
	Latitude/Longitude	12° 34' South, 130° 52' East (at centre)
	Bioregion	Darwin Coastal (98%), Pine Creek (2%)
	Description	<p>The site includes the tidal flats (222 km²) within the Harbour from East Point around to West Point (including the major sub-embayments of East Arm, Middle Arm, West Arm, Woods Inlet, Frances Bay and Fannie Bay) and a buffering terrestrial area (527 km²). Sub-tidal waters of the Harbour are not included in this assessment.</p> <p>The rivers that flow into the Harbour (including the Darwin, Blackmore and Elizabeth Rivers and Berry Creek) have small catchments and lack the large floodplains and freshwater wetlands that characterise many other coastal areas around the Top End. Much of the area behind the extensive tidal flats in this site is high ground forested with woodland rather than wetlands (Darwin Harbour Advisory Committee 2003).</p> <p>The extensive tidal flats associated with nearby Shoal Bay and the sand sheets of the Howard River are also recognised as sites of high conservation significance in the NT.</p>
THREATENED SPECIES	Significance Rating	International Significance
	Threatened plants and animals (Listings at National/NT level CR - Critically Endangered, EN - Endangered, VU - Vulnerable, NT - Near Threatened, LC - Least Concern, DD - Data Deficient)	<p>15 threatened species are reported from this site.</p> <p>Plants</p> <ul style="list-style-type: none"> ▪ <i>Cycas armstrongii</i> (-/VU) ▪ <i>Utricularia singeriana</i> (-/VU) <p>Vertebrates</p> <ul style="list-style-type: none"> ▪ Australian Bustard <i>Ardeotis australis</i> (-/VU) ▪ Christmas Frigatebird <i>Fregata andrewsi</i> (VU/-) ▪ Gouldian Finch <i>Erythrura gouldiae</i> (EN/EN) ▪ Masked Owl <i>Tyto novaehollandiae kimberlii</i> (VU/VU) ▪ Partridge Pigeon <i>Geophaps smithii</i> (VU/VU) ▪ Red Goshawk <i>Erythrotriorchis radiatus</i> (VU/VU) ▪ Northern Quoll <i>Dasyurus hallucatus</i> (EN/CR) ▪ Merten's Water Monitor <i>Varanus mertensi</i> (-/VU) ▪ Yellow-spotted Monitor <i>Varanus panoptes</i> (-/VU) ▪ Flatback Turtle <i>Natator depressus</i> (VU/DD) ▪ Green Turtle <i>Chelonia mydas</i> (VU/LC) ▪ Hawksbill Turtle <i>Eretmochelys imbricata</i> (VU/-) <p>Invertebrates</p> <ul style="list-style-type: none"> ▪ Atlas Moth <i>Attacus wardi</i> (-/EN) <p>There are only historic records of <i>Utricularia singeriana</i> and the Atlas Moth from this site, and suitable habitat may no longer be present.</p>
ENDEMIC SPECIES	Significance Rating	Not Significant
	Notes	<p>Endemic to the bioregion: One vertebrate (<i>Ramphotyphlops nema</i>) and two plant species (<i>Spermacoce phalloides</i>, <i>Typhonium praetermissum</i>) recorded in this site are NT endemics and are only known from the Darwin Coastal bioregion.</p> <p>Endemic to the NT: 77 plant and 12 vertebrate species recorded in the site are only known from the NT.</p> <p>Other: 12 plant and one vertebrate species (Lewin's Rail) are only known from the site or the Darwin Coastal bioregion within the NT, but are also found in other states. There is a collection of records of vagrant bird species from Darwin Harbour/Shoal Bay that have not been recorded elsewhere in the NT.</p>
WILDLIFE AGGREGATIONS	Significance Rating	Not Significant
	Marine turtles	Flatback, Hawksbill, and Green Turtles frequent the waters of Darwin Harbour but the lack of sandy beaches within the Harbour inhibits nesting activity.
	Seabirds	Significant aggregations of seabirds are not known from this site (Chatto 2001).
	Waterbirds	This site lacks a large area of freshwater wetland and supports relatively low numbers of waterbirds (Chatto 2006).
	Shorebirds	Although large areas of mudflats occur around Darwin Harbour during periods of low tide, high numbers of shorebirds have not been recorded. The highest count is 3000 individuals in 1994 (Chatto 2003).
WETLANDS	Other aggregations	None known
	Significance Rating	National Significance
	Ramsar criteria met	Not assessed
	DIWA criteria met	Darwin Harbour is listed as a wetland of national significance in the Directory of Important Wetlands in Australia (DIWA: NT029 Port Darwin). The site meets criteria 1, 2, 3, 4, 5, 6 and includes wetland types: A1, A2, A3, A6, A7, and A9.
Notes	<p>Darwin Harbour is a good example of a shallow branching embayment of the Top End Region, supporting one of the largest discrete areas of mangrove swamp in the NT (DIWA).</p> <p>Within the Darwin Harbour catchment there are series of ponding systems (Dambos) that may play an important role in filtering organic material before it is delivered to the harbour. Many of these are not included within the current boundary of the site (R. Wasson, Charles Darwin University, pers. comm.).</p>	

DARWIN HARBOUR - SITE OF CONSERVATION SIGNIFICANCE

	Rivers	The Darwin, Blackmore and Elizabeth Rivers and Berry Creek flow into Darwin Harbour. All are relatively small Top End rivers.
FLORA	Significance Rating	National Significance
	Notes	<p>Rainforest: About 1150 ha of mostly dry rainforest (or 0.4% of the NT rainforest estate) occur as small patches around the margin of the tidal flats in this site. One patch is >100 ha but most patches are small (<10 ha) (Russell-Smith 1991).</p> <p>Large areas of rainforest or vine-thicket habitat occur within the Harbour on peninsulas or 'hinterland islands' such as Blaydin Point, Wickham Point, Flagstaff Hill and Kings Table. Fire-sensitive vine-thicket communities have become particularly well developed in these habitats due to the protection offered by the surrounding mangroves, which unlike savannah woodlands, do not burn.</p> <p>Other: Mangroves fringe the whole embayment of Darwin Harbour and comprise one of the largest (~20 400 ha) and most floristically diverse (~41 species) areas of mangroves in the NT (Duke 2006). Mangrove communities within the Harbour have been identified and mapped by Brocklehurst and Edmeades (1996).</p>
OTHER ENVIRONMENTAL VALUES		<p>The mangroves of Darwin Harbour support a highly specialised fauna including over 306 invertebrate species and 112 species of mammals, bats and birds (Metcalf 2007).</p> <p>Mangroves in north-western Australia support distinctive fauna and more mangrove-endemic bird species than any other region in the world (Noske 1996). Some of the highly specialised bird species that occur in Darwin Harbour include the Mangrove Gerygone, Mangrove Robin, Mangrove Golden Whistler and Chestnut Rail.</p> <p>A group of colubrid snakes including the White-bellied Mangrove Snake <i>Fordonia leucobalia</i>, are also part of the distinctive mangrove fauna found in Darwin Harbour, and compliments the wider, but poorly-known, community of sea-snakes in the area (Whiting 2003).</p> <p>In terms of faunal diversity, Darwin Harbour is one of the richest mangrove systems in the Indo-west Pacific region. Each of the eight different floristic assemblages defined in Darwin Harbour mangroves (Brocklehurst and Edmeades 1996) supports a distinctive faunal community. In particular, the most seaward assemblage, with <i>Sonneratia alba</i> dominant, is an exceptionally productive mangrove community with the highest primary productivity (Metcalf 1999) and faunal diversity and abundance of any assemblage in the harbour (Metcalf 2007).</p> <p>Eight sites around Darwin Harbour are listed on the Register of the National Estate for their natural values including: Berry Springs Nature Park, Darwin Foreshores, <i>Pachystoma pubescens</i> Sites 1 and 2, Channel Island Reefs, Imaluk Creek Area, Southport Area, and the Darwin Harbour Wetlands (Australian Heritage Council).</p> <p>80 species recorded from this site are listed under international conventions or bilateral agreements protecting migratory animals.</p> <p>Dugongs are common in the Harbour (Whiting 2004).</p> <p>The marine areas within this site are likely to encompass other significant biodiversity values and these are currently being explored and collated in a project by the Marine Biodiversity Group of NRETAS (K. Edyvane, NRETAS, pers. comm.).</p>
MANAGEMENT ISSUES		<p>Fire: The current fire regime in the Darwin region differs from that in other sparsely populated savanna areas of the NT and is ad hoc and closely linked to tenure (Price and Baker 2007). The frequency of late dry season fires is lower in the Darwin region than other areas (Price and Baker 2007), but exotic grasses are increasing fuel loads and the intensity of fires (Kean and Price 2003). In the period 1993-2004, 43% of the site was burnt in fewer than three years, and 24% was burnt in more than six years.</p> <p>Feral animals: Feral cat, dog, rat, pig and Cane Toad are present in the site. Marine pest incursions remain a concern given the proximity of Darwin Harbour to Asia (Smit 2003).</p> <p>Weeds: Four Weeds of National Significance (<i>Lantana camara</i>, <i>Mimosa pigra</i>, <i>Salvinia molesta</i>, <i>Parkinsonia aculeata</i>), 25 declared Category A and B weeds and 12 other undeclared but problematic environmental weeds (high priority weeds: Smith 2001) are recorded from this site. The aquatic weed <i>Cabomba caroliniana</i> is reported from Darwin River (Smith 2002).</p> <p>Other: The north-eastern part of Darwin Harbour catchment is highly developed and native vegetation and tidal flats have been cleared and drained. With the current rapid growth of the city of Darwin, further pressure is likely to come from future recreational, residential and industrial developments within the Harbour (Wightman 2006). Major industrial developments around Middle Arm are currently being considered.</p> <p>Nutrient enrichment from sewerage discharge and storm water run-off may affect mangrove communities in the Harbour (Dames and Moore 1984 in Wightman 2006).</p> <p>Despite having a macrotidal range of 7.8 m, the waters of Darwin Harbour are not particularly well flushed and recent research and modelling indicates that pollution may circulate within the upper reaches of the Harbour for considerable periods (Williams, 2006). Pollution and increased turbidity (e.g. from dredging) associated with future developments within the Harbour, may therefore affect water quality and the biodiversity values.</p> <p>The potential rise in sea level predicted in response to global climate change may affect mangrove communities in Darwin Harbour, especially in areas where coastal developments exclude the landward retreat of coastal ecosystems.</p> <p>Although mangroves are generally well adapted to the dynamic conditions at the land-sea interface, recovery from severe disturbance (e.g. storms, cyclones, clear-felling) may be very slow (Metcalf, 2007). Indeed, severely damaged mangroves may take several decades to recover and such delayed recovery times increase their vulnerability to disturbance (McGuinness 1992).</p>

DARWIN HARBOUR - SITE OF CONSERVATION SIGNIFICANCE

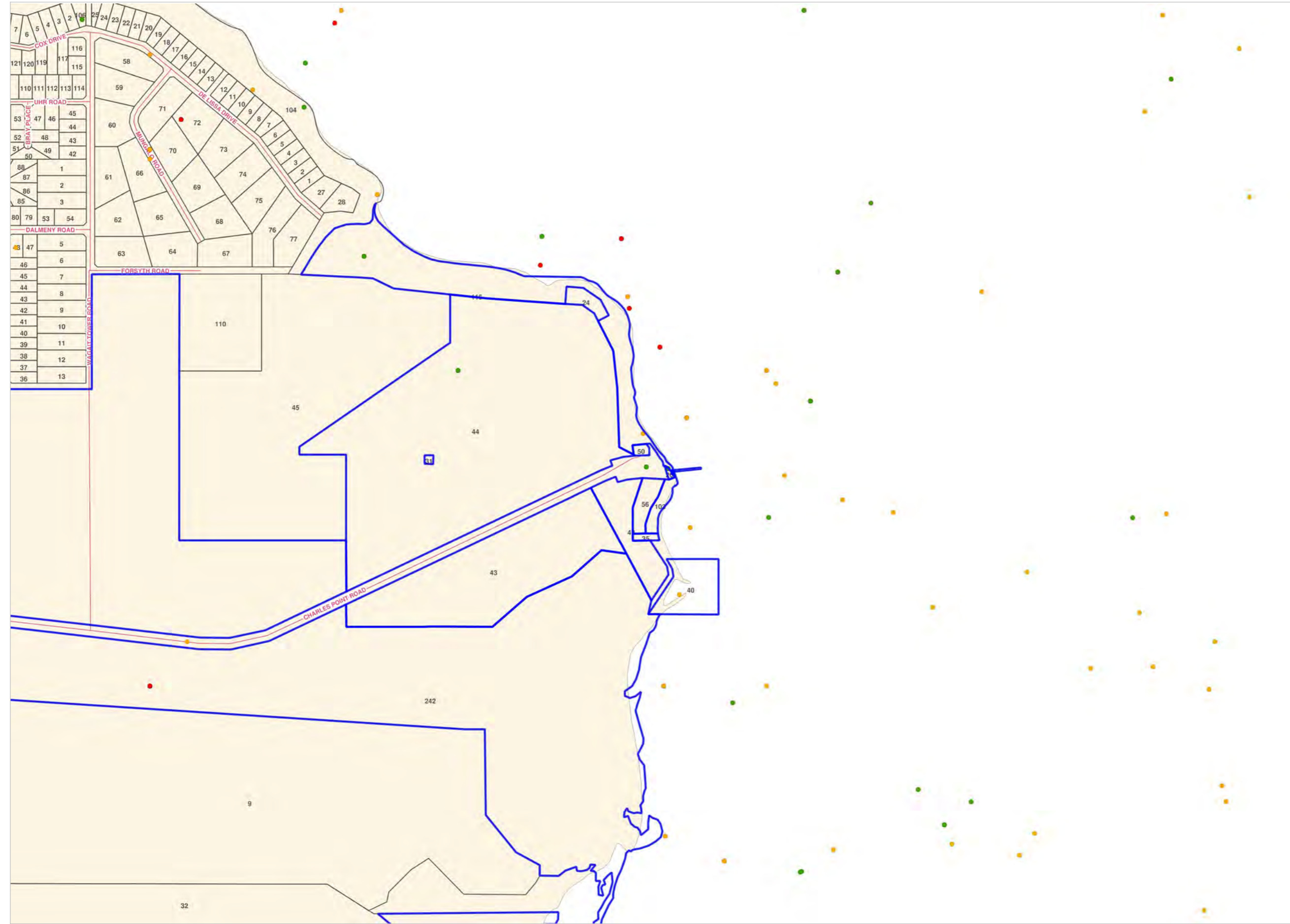
MANAGEMENT INFORMATION	NRM groups	Belyuen Land Management Group (Belyuen), Larrakia Rangers (Darwin) (Northern Land Council 2006).
	Protected areas	Blackmore River Conservation Reserve (4 km ² / 0.6% of site), Channel Island Conservation Reserve (1 km ² / 0.1% of site), Charles Darwin National Park (10 km ² / 1% of site), Territory Wildlife Park/Berry Springs Nature Park (11 km ² / 1% of site).
	Current management plans	<p>Site-specific plans: Charles Darwin National Park Plan of Management (PWCNT undated); Darwin Harbour Regional Plan of Management (Darwin Harbour Advisory Committee 2003).</p> <p>National recovery plans for threatened species: marine turtles (Environment Australia 2003); Northern Quoll (Hill and Ward in prep.); Partridge Pigeon and Masked Owl (Woinarski 2004a), Gouldian Finch (O'Malley 2006); Red Goshawk (Baker-Gabb in prep.).</p> <p>Other management plans: Australian Weeds Strategy (NRMCC 2007); Threat Abatement Plan for Predation by Feral Cats (Environment Australia, 1999); Threat Abatement Plan for Predation, habitat degradation, competition and disease transmission by feral pigs (DEH 2005); FIREPLAN: Fire management for the savanna community (Russell-Smith <i>et al.</i> in prep.).</p>
KEY REFERENCES	Monitoring programs and research projects	<p>Fire in the tropical savannas is mapped continuously under the North Australia Fire Information Project http://www.firenorth.org.au/nafi/app/init.jsp</p> <p>Numerous programs and sites exist for monitoring water quality and ecological condition within the Darwin Harbour catchment area and a summary of them is reported by the Darwin Harbour Advisory Committee (2005).</p> <p>Fauna and vegetation are monitored at permanent sites in NT parks within the Darwin region including the Territory Wildlife Park and Charles Darwin National Park (Calnan <i>et al.</i> 2008).</p> <p>Populations of the rare ground orchid <i>Nervilia peltata</i> (D. Liddle, NRETAS unpubl.) and <i>Cycas armstrongii</i> (Liddle 2004) are monitored under different fire regimes at permanent plots in Charles Darwin National Park.</p> <p>There is an ongoing program of monitoring and removal of Saltwater Crocodiles from within Darwin Harbour and Shoal Bay (Nichols and Letnic in press).</p> <p>Dolphins are surveyed monthly along transects within Darwin Harbour and Shoal Bay (C. Palmer, NRETAS unpubl.).</p> <p>Research on the biodiversity of mangrove habitats in Darwin Harbour involving surveys of vertebrate and invertebrate fauna in disturbed and undisturbed mangroves was conducted from 1999-2002 (Metcalf 2007). The methodology developed has since been applied for mangrove monitoring purposes.</p> <p>A two year study of primary productivity within the eight different mangrove assemblages was conducted at eight sites in the three arms of Darwin Harbour from 1997-1999 (Metcalf 1999). Monitoring of mangrove productivity was continued for a 3rd year by DIPE.</p> <p>Recommended methodology for monitoring of flora and soils in mangrove habitats of Darwin Harbour was developed by DIPE (Moritz-Zimmeman <i>et al.</i> 2002), developed further in a research framework (Comley 2002) and later applied at the Darwin LNG plant (McHugh 2004).</p> <p>Commercial mangrove monitoring programs for aquaculture developments in Darwin Harbour including Wild River and Tiger International subsequently adopted this monitoring methodology for impact assessment purposes.</p> <p>Research on the distribution and role of Dambo wetland systems in the Darwin Harbour catchment (R. Wasson, Charles Darwin University, pers. comm.).</p> <p>Research on the use of mangrove habitats by fish in Darwin Harbour was conducted from 1998 to 2001 including development of a trophic model for the harbour (Martin 2004).</p> <p>As part of the Environmental Management Plan for the Darwin LNG Plant, Conoco Phillips established in 2002 a mangrove monitoring program at Wickham Point with matched control sites in Darwin Harbour. The monitoring program has provided over 6 years of valuable baseline data on mangrove flora and invertebrate fauna (URS 2003; Metcalfe 2005; 2006).</p>
	Management recommendations	<p>Continue to implement the Darwin Harbour Regional Plan of Management (NRETA 2005).</p> <p>Develop a fire management strategy for the Darwin region that identifies clear objectives, roles and responsibilities (Price and Baker 2007).</p> <p>Prevent the spread of exotic grasses, especially mission grasses and gamba grass, into new areas in the Darwin region and reduce populations in areas with high conservation value or where fires threaten properties (Kean and Price 2003).</p> <p>Assess the data for Darwin Harbour against Ramsar criteria and consider listing as a wetland of international significance (S. Blanch, Environment Centre NT, pers. comm.).</p> <p>Consider expanding the boundary of the site to the catchment boundary to incorporate Dambo wetland systems (R. Wasson, Charles Darwin University, pers. comm.).</p>
KEY REFERENCES	Papers and reports	<p>Darwin Harbour Advisory Committee (2003). <i>Darwin Harbour Regional Plan of Management</i>. Department of Infrastructure, Planning and Environment, Darwin.</p> <p>Darwin Harbour Advisory Committee (2005). <i>A Review of Environmental Monitoring of the Darwin Harbour Region and Recommendations for Integrated Monitoring</i>. Darwin Harbour Advisory Committee, Darwin.</p> <p>DIWA (A Directory of Important Wetlands in Australia). <i>Australian Wetlands Database</i>. Department of Environment, Water, Heritage & the Arts, Canberra ACT (accessed November 2007).</p> <p>Metcalf, K. (2007). <i>The biological diversity, recovery from disturbance and rehabilitation of mangroves in Darwin Harbour</i>. PhD thesis. Charles Darwin University, Darwin.</p>
	Contributors	Kristin Metcalfe, Consultant Environmental Scientist, Darwin



NORTHERN
TERRITORY
GOVERNMENT

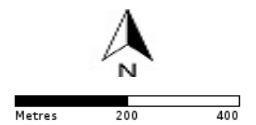
NR MAPS

Mandorah_Fauna Atlas



Legend

- Threatened Fauna (Red dot)
- Significant Fauna (Green dot)
- Native Fauna (Yellow dot)
- Introduced Fauna (Blue dot)
- Waterbird Colonies (STATUS)
 - Unknown (Light yellow circle)
 - Low (Light green circle)
 - Regionally High (Medium green circle)
 - National (Dark green circle)
- Seabird Colonies (STATUS)
 - Unknown (Light blue circle)
 - Low (Medium blue circle)
 - Regionally High (Dark blue circle)
 - National (Very dark blue circle)
 - International (Darkest blue circle)



nrmaps.nt.gov.au
Geospatial Services Branch



Creative Commons Attribution 4.0
International Public License

<https://creativecommons.org/licenses/by/4.0/legalcode>

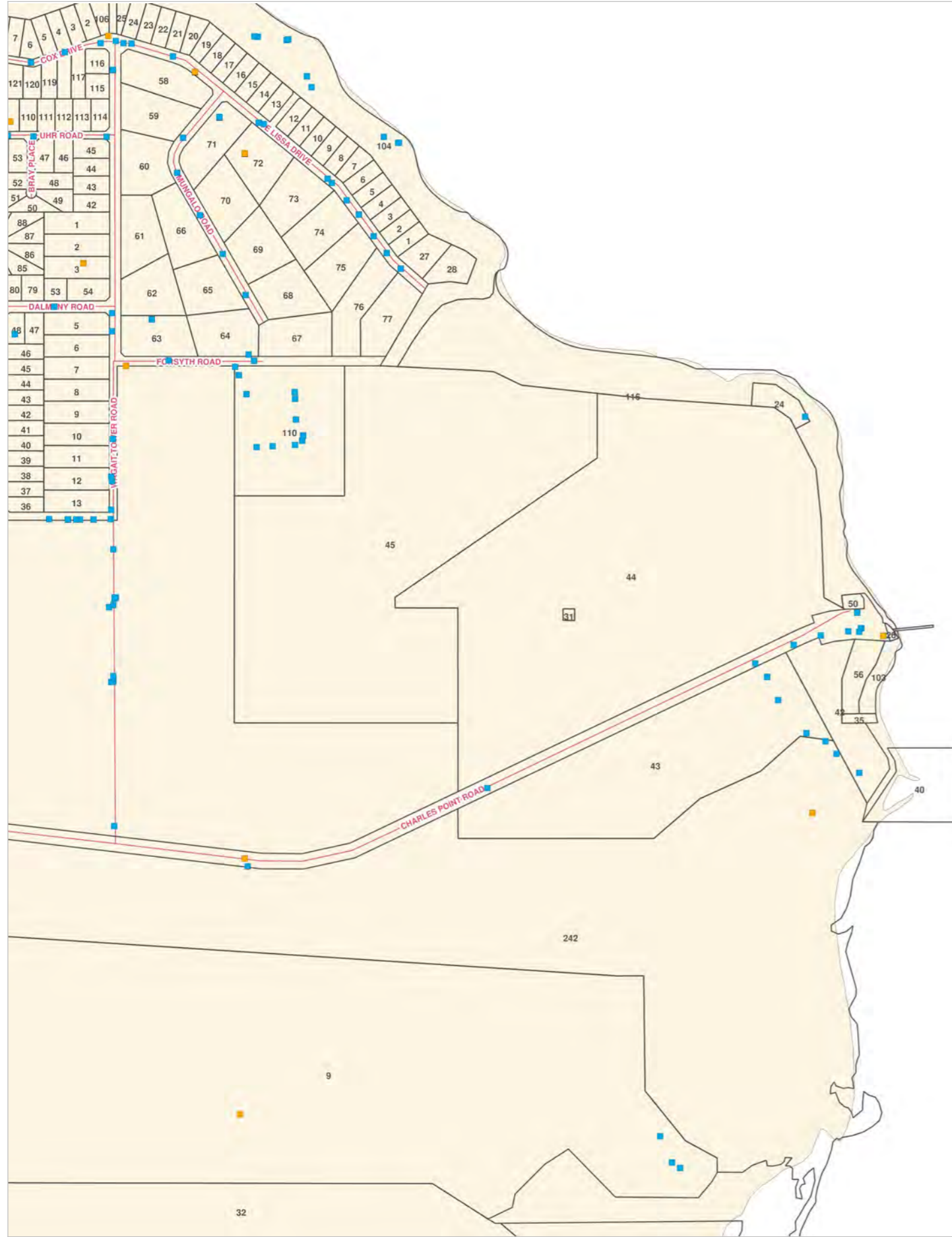
Department of Environment
and Natural Resources
© Northern Territory Government



NORTHERN
TERRITORY
GOVERNMENT

NR MAPS

Mandorah_Flora Atlas



Legend

- Threatened Flora ■
- Restricted Range Flora ■
- Significant Flora ■
- Native Flora ■
- Introduced Flora ■

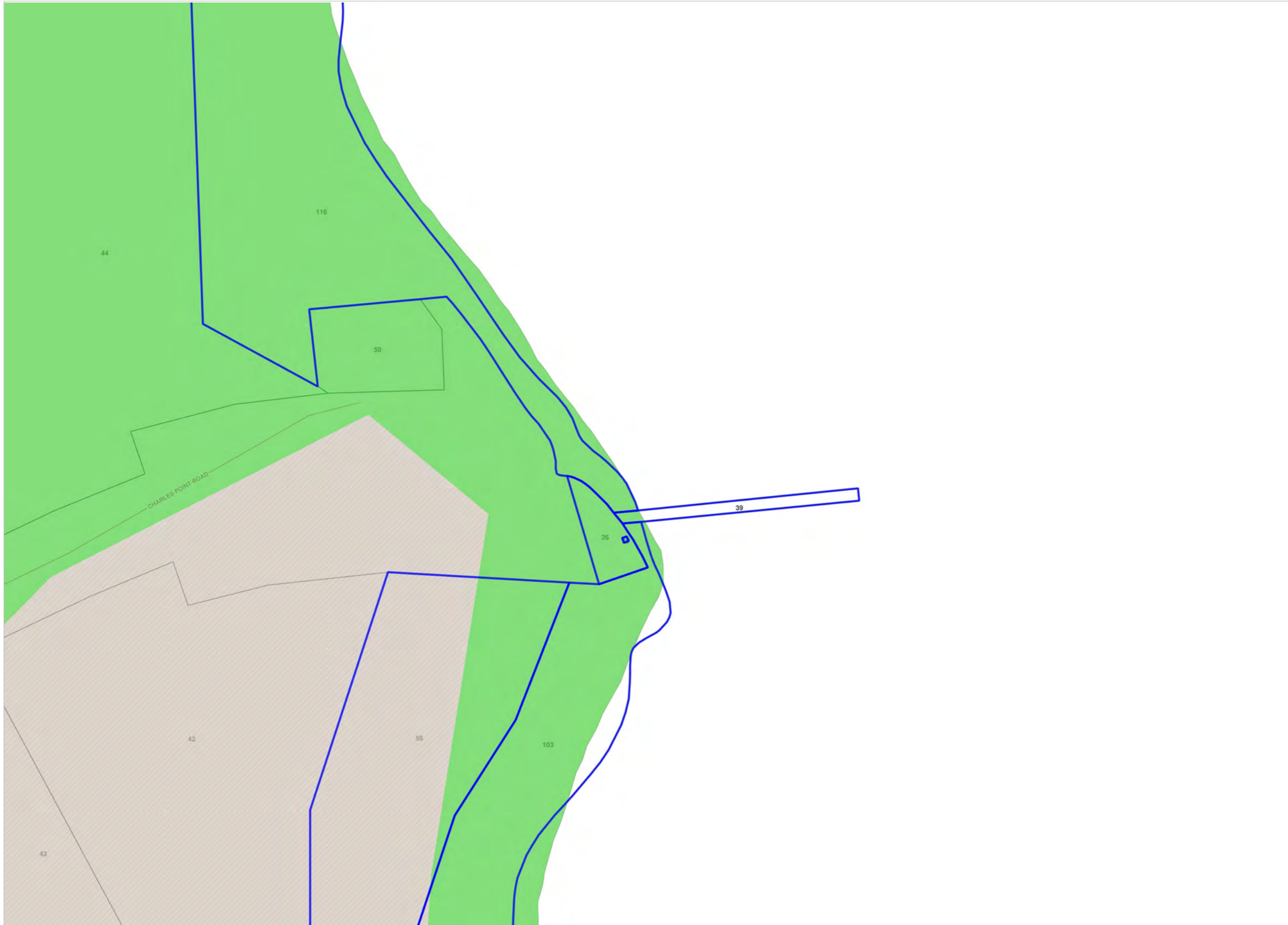


nrmaps.nt.gov.au
Geospatial Services Branch



Creative Commons Attribution 4.0
International Public License
<https://creativecommons.org/licenses/by/4.0/legalcode>

Department of Environment
and Natural Resources
© Northern Territory Government



Legend

- NVIS 2007 Level 2
- Closed forest
 - Mid closed forest
 - Open forest
 - Woodland
 - Open woodland
 - Open shrubland
 - Sparse shrubland
 - Open palmland
 - Closed tussock grassland
 - Tussock grassland
 - Open tussock grassland
 - Sparse tussock grassland
 - Hummock grassland
 - Open hummock grassland
 - Forbland
 - Sparse samphire shrubland
 - Inland salt lake
 - Pastoral/Horticulture/roads
 - Plantations/roads
 - Rural/Residential/roads
 - Urban/Roads
 - Unknown



Metres 20 40 60

nrmaps.nt.gov.au

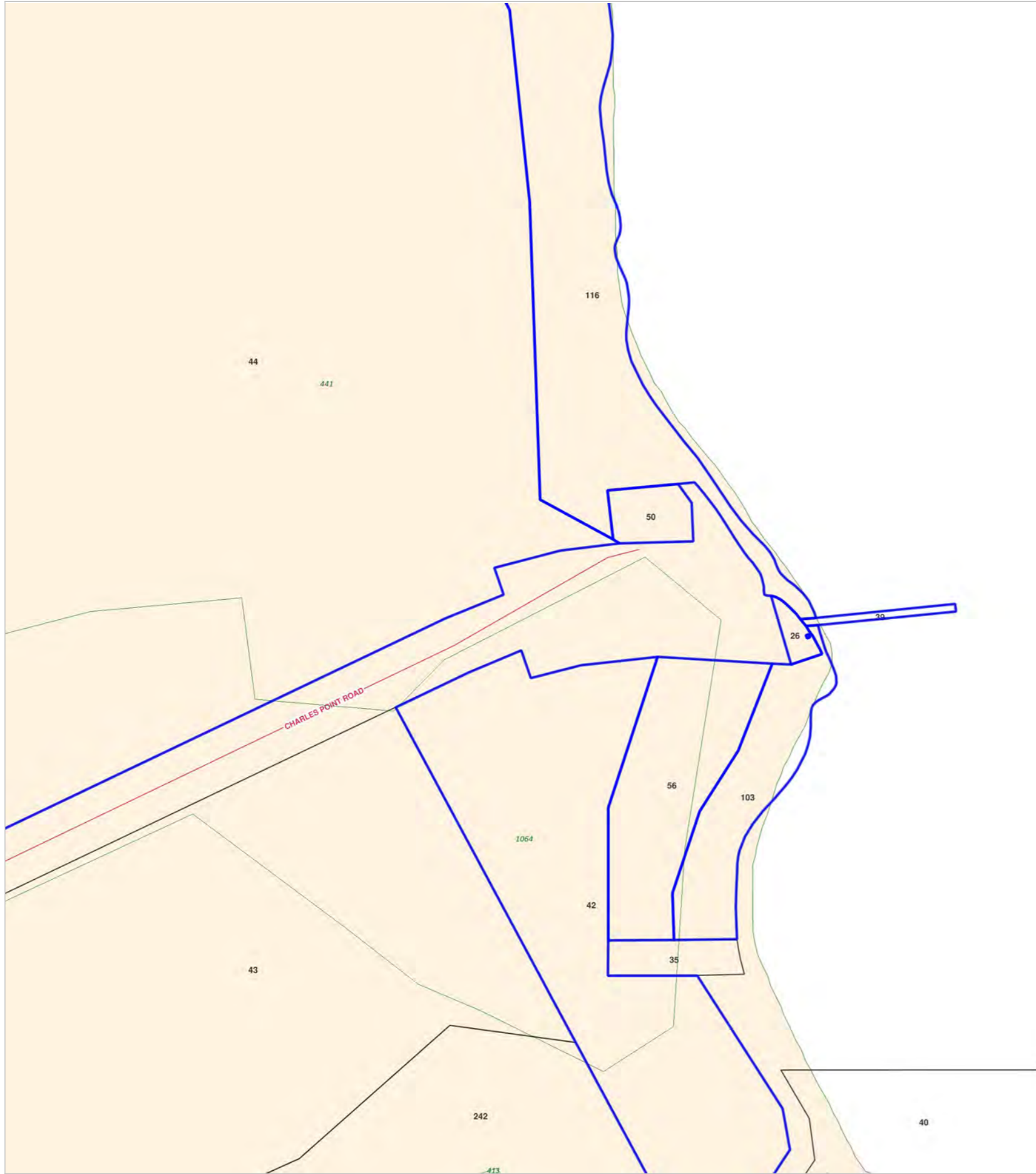
Geospatial Services Branch



Creative Commons Attribution 4.0
International Public License

<https://creativecommons.org/licenses/by/4.0/legalcode>

Department of Environment
and Natural Resources
© Northern Territory Government



Legend
NVIS 2007




nrmaps.nt.gov.au
Geospatial Services Branch



Creative Commons Attribution 4.0
International Public License

<https://creativecommons.org/licenses/by/4.0/legalcode>

Department of Environment
and Natural Resources
© Northern Territory Government



EPBC Act Protected Matters Report

This report provides general guidance on matters of national environmental significance and other matters protected by the EPBC Act in the area you have selected.

Information on the coverage of this report and qualifications on data supporting this report are contained in the caveat at the end of the report.

Information is available about [Environment Assessments](#) and the EPBC Act including significance guidelines, forms and application process details.

Report created: 11/11/21 17:56:07

[Summary](#)

[Details](#)

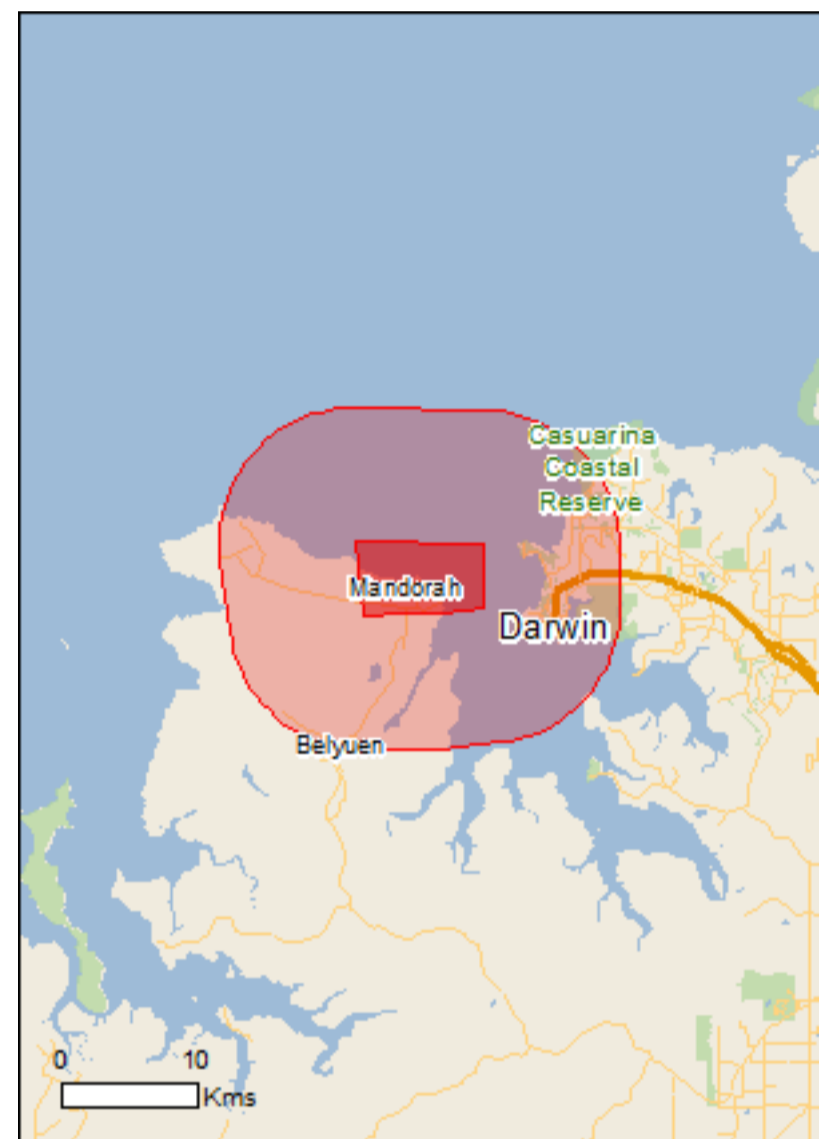
[Matters of NES](#)

[Other Matters Protected by the EPBC Act](#)

[Extra Information](#)

[Caveat](#)

[Acknowledgements](#)



This map may contain data which are
©Commonwealth of Australia
(Geoscience Australia), ©PSMA 2015

[Coordinates](#)

Buffer: 10.0Km



Summary

Matters of National Environmental Significance

This part of the report summarises the matters of national environmental significance that may occur in, or may relate to, the area you nominated. Further information is available in the detail part of the report, which can be accessed by scrolling or following the links below. If you are proposing to undertake an activity that may have a significant impact on one or more matters of national environmental significance then you should consider the [Administrative Guidelines on Significance](#).

World Heritage Properties:	None
National Heritage Places:	None
Wetlands of International Importance:	None
Great Barrier Reef Marine Park:	None
Commonwealth Marine Area:	None
Listed Threatened Ecological Communities:	None
Listed Threatened Species:	39
Listed Migratory Species:	70

Other Matters Protected by the EPBC Act

This part of the report summarises other matters protected under the Act that may relate to the area you nominated. Approval may be required for a proposed activity that significantly affects the environment on Commonwealth land, when the action is outside the Commonwealth land, or the environment anywhere when the action is taken on Commonwealth land. Approval may also be required for the Commonwealth or Commonwealth agencies proposing to take an action that is likely to have a significant impact on the environment anywhere.

The EPBC Act protects the environment on Commonwealth land, the environment from the actions taken on Commonwealth land, and the environment from actions taken by Commonwealth agencies. As heritage values of a place are part of the 'environment', these aspects of the EPBC Act protect the Commonwealth Heritage values of a Commonwealth Heritage place. Information on the new heritage laws can be found at <http://www.environment.gov.au/heritage>

A [permit](#) may be required for activities in or on a Commonwealth area that may affect a member of a listed threatened species or ecological community, a member of a listed migratory species, whales and other cetaceans, or a member of a listed marine species.

Commonwealth Land:	16
Commonwealth Heritage Places:	7
Listed Marine Species:	109
Whales and Other Cetaceans:	12
Critical Habitats:	None
Commonwealth Reserves Terrestrial:	None
Australian Marine Parks:	None

Extra Information

This part of the report provides information that may also be relevant to the area you have nominated.

State and Territory Reserves:	3
Regional Forest Agreements:	None
Invasive Species:	30
Nationally Important Wetlands:	1
Key Ecological Features (Marine)	None

Details

Matters of National Environmental Significance

Listed Threatened Species		[Resource Information]
Name	Status	Type of Presence
Birds		
Calidris canutus Red Knot, Knot [855]	Endangered	Species or species habitat known to occur within area
Calidris ferruginea Curlew Sandpiper [856]	Critically Endangered	Species or species habitat known to occur within area
Calidris tenuirostris Great Knot [862]	Critically Endangered	Roosting known to occur within area
Charadrius leschenaultii Greater Sand Plover, Large Sand Plover [877]	Vulnerable	Species or species habitat known to occur within area
Charadrius mongolus Lesser Sand Plover, Mongolian Plover [879]	Endangered	Roosting known to occur within area
Erythrotriorchis radiatus Red Goshawk [942]	Vulnerable	Species or species habitat known to occur within area
Erythrura gouldiae Gouldian Finch [413]	Endangered	Species or species habitat known to occur within area
Falco hypoleucos Grey Falcon [929]	Vulnerable	Species or species habitat likely to occur within area
Geophaps smithii smithii Partridge Pigeon (eastern) [64441]	Vulnerable	Species or species habitat known to occur within area
Limosa lapponica baueri Nunivak Bar-tailed Godwit, Western Alaskan Bar-tailed Godwit [86380]	Vulnerable	Species or species habitat known to occur within area
Numenius madagascariensis Eastern Curlew, Far Eastern Curlew [847]	Critically Endangered	Species or species habitat known to occur within area
Rostratula australis Australian Painted Snipe [77037]	Endangered	Species or species habitat may occur within area
Tyto novaehollandiae kimberli Masked Owl (northern) [26048]	Vulnerable	Species or species habitat likely to occur within area

Name	Status	Type of Presence
Mammals		
Antechinus bellus Fawn Antechinus [344]	Vulnerable	Species or species habitat likely to occur within area
Balaenoptera musculus Blue Whale [36]	Endangered	Species or species habitat may occur within area
Conilurus penicillatus Brush-tailed Rabbit-rat, Brush-tailed Tree-rat, Pakooma [132]	Vulnerable	Species or species habitat may occur within area
Dasyurus hallucatus Northern Quoll, Digul [Gogo-Yimidir], Wijingadda [Dambimangari], Wiminji [Martu] [331]	Endangered	Species or species habitat known to occur within area
Macroderma gigas Ghost Bat [174]	Vulnerable	Species or species habitat likely to occur within area
Megaptera novaeangliae Humpback Whale [38]	Vulnerable	Species or species habitat may occur within area
Mesembriomys gouldii gouldii Black-footed Tree-rat (Kimberley and mainland Northern Territory), Djintamoonga, Manbul [87618]	Endangered	Species or species habitat known to occur within area
Petrogale concinna canescens Nabarlek (Top End) [87606]	Endangered	Species or species habitat likely to occur within area
Phascogale pirata Northern Brush-tailed Phascogale [82954]	Vulnerable	Species or species habitat likely to occur within area
Saccolaimus saccolaimus nudicluniatus Bare-rumped Sheath-tailed Bat, Bare-rumped Sheathtail Bat [66889]	Vulnerable	Species or species habitat likely to occur within area
Trichosurus vulpecula arnhemensis Northern Brushtail Possum [83091]	Vulnerable	Species or species habitat known to occur within area
Xeromys myoides Water Mouse, False Water Rat, Yirrkoo [66]	Vulnerable	Species or species habitat likely to occur within area
Plants		
Stylidium ensatum a triggerplant [86366]	Endangered	Species or species habitat may occur within area
Reptiles		
Acanthophis hawkei Plains Death Adder [83821]	Vulnerable	Species or species habitat known to occur within area
Caretta caretta Loggerhead Turtle [1763]	Endangered	Foraging, feeding or related behaviour known to occur within area
Chelonia mydas Green Turtle [1765]	Vulnerable	Breeding known to occur within area
Dermochelys coriacea Leatherback Turtle, Leathery Turtle, Luth [1768]	Endangered	Breeding likely to occur within area
Eretmochelys imbricata Hawksbill Turtle [1766]	Vulnerable	Foraging, feeding or related behaviour known to occur within area

Name	Status	Type of Presence
Lepidochelys olivacea Olive Ridley Turtle, Pacific Ridley Turtle [1767]	Endangered	Breeding known to occur within area
Natator depressus Flatback Turtle [59257]	Vulnerable	Breeding known to occur within area
Sharks		
Carcharodon carcharias White Shark, Great White Shark [64470]	Vulnerable	Species or species habitat may occur within area
Glyphis garricki Northern River Shark, New Guinea River Shark [82454]	Endangered	Species or species habitat may occur within area
Pristis clavata Dwarf Sawfish, Queensland Sawfish [68447]	Vulnerable	Species or species habitat known to occur within area
Pristis pristis Freshwater Sawfish, Largetooth Sawfish, River Sawfish, Leichhardt's Sawfish, Northern Sawfish [60756]	Vulnerable	Species or species habitat known to occur within area
Pristis zijsron Green Sawfish, Dindagubba, Narrowsnout Sawfish [68442]	Vulnerable	Species or species habitat known to occur within area
Rhincodon typus Whale Shark [66680]	Vulnerable	Species or species habitat may occur within area

Listed Migratory Species [\[Resource Information \]](#)

* Species is listed under a different scientific name on the EPBC Act - Threatened Species list.

Name	Threatened	Type of Presence
Migratory Marine Birds		
Anous stolidus Common Noddy [825]		Species or species habitat likely to occur within area
Apus pacificus Fork-tailed Swift [678]		Species or species habitat likely to occur within area
Calonectris leucomelas Streaked Shearwater [1077]		Species or species habitat known to occur within area
Fregata ariel Lesser Frigatebird, Least Frigatebird [1012]		Species or species habitat known to occur within area
Fregata minor Great Frigatebird, Greater Frigatebird [1013]		Species or species habitat known to occur within area
Sternula albifrons Little Tern [82849]		Species or species habitat may occur within area

Migratory Marine Species

Anoxypristis cuspidata Narrow Sawfish, Knifetooth Sawfish [68448]		Species or species habitat known to occur within area
Balaenoptera edeni Bryde's Whale [35]		Species or species habitat may occur within area
Balaenoptera musculus Blue Whale [36]	Endangered	Species or species habitat may occur within

Name	Threatened	Type of Presence area
Carcharhinus longimanus Oceanic Whitetip Shark [84108]		Species or species habitat may occur within area
Carcharodon carcharias White Shark, Great White Shark [64470]	Vulnerable	Species or species habitat may occur within area
Caretta caretta Loggerhead Turtle [1763]	Endangered	Foraging, feeding or related behaviour known to occur within area
Chelonia mydas Green Turtle [1765]	Vulnerable	Breeding known to occur within area
Crocodylus porosus Salt-water Crocodile, Estuarine Crocodile [1774]		Species or species habitat likely to occur within area
Dermochelys coriacea Leatherback Turtle, Leathery Turtle, Luth [1768]	Endangered	Breeding likely to occur within area
Dugong dugon Dugong [28]		Species or species habitat known to occur within area
Eretmochelys imbricata Hawksbill Turtle [1766]	Vulnerable	Foraging, feeding or related behaviour known to occur within area
Lepidochelys olivacea Olive Ridley Turtle, Pacific Ridley Turtle [1767]	Endangered	Breeding known to occur within area
Manta alfredi Reef Manta Ray, Coastal Manta Ray, Inshore Manta Ray, Prince Alfred's Ray, Resident Manta Ray [84994]		Species or species habitat may occur within area
Manta birostris Giant Manta Ray, Chevron Manta Ray, Pacific Manta Ray, Pelagic Manta Ray, Oceanic Manta Ray [84995]		Species or species habitat may occur within area
Megaptera novaeangliae Humpback Whale [38]	Vulnerable	Species or species habitat may occur within area
Natator depressus Flatback Turtle [59257]	Vulnerable	Breeding known to occur within area
Orcaella heinsohni Australian Snubfin Dolphin [81322]		Species or species habitat known to occur within area
Orcinus orca Killer Whale, Orca [46]		Species or species habitat may occur within area
Pristis clavata Dwarf Sawfish, Queensland Sawfish [68447]	Vulnerable	Species or species habitat known to occur within area
Pristis pristis Freshwater Sawfish, Largetooth Sawfish, River Sawfish, Leichhardt's Sawfish, Northern Sawfish [60756]	Vulnerable	Species or species habitat known to occur within area
Pristis zijsron Green Sawfish, Dindagubba, Narrowsnout Sawfish [68442]	Vulnerable	Species or species habitat known to occur within area
Rhincodon typus Whale Shark [66680]	Vulnerable	Species or species habitat may occur within area

Name	Threatened	Type of Presence
Sousa chinensis Indo-Pacific Humpback Dolphin [50]		Breeding known to occur within area
Tursiops aduncus (Arafura/Timor Sea populations) Spotted Bottlenose Dolphin (Arafura/Timor Sea populations) [78900]		Species or species habitat known to occur within area
Migratory Terrestrial Species		
Cecropis daurica Red-rumped Swallow [80610]		Species or species habitat known to occur within area
Cuculus optatus Oriental Cuckoo, Horsfield's Cuckoo [86651]		Species or species habitat known to occur within area
Hirundo rustica Barn Swallow [662]		Species or species habitat known to occur within area
Motacilla cinerea Grey Wagtail [642]		Species or species habitat known to occur within area
Motacilla flava Yellow Wagtail [644]		Species or species habitat known to occur within area
Rhipidura rufifrons Rufous Fantail [592]		Species or species habitat known to occur within area
Migratory Wetlands Species		
Acrocephalus orientalis Oriental Reed-Warbler [59570]		Species or species habitat may occur within area
Actitis hypoleucos Common Sandpiper [59309]		Species or species habitat known to occur within area
Arenaria interpres Ruddy Turnstone [872]		Roosting known to occur within area
Calidris acuminata Sharp-tailed Sandpiper [874]		Roosting known to occur within area
Calidris alba Sanderling [875]		Roosting known to occur within area
Calidris canutus Red Knot, Knot [855]	Endangered	Species or species habitat known to occur within area
Calidris ferruginea Curlew Sandpiper [856]	Critically Endangered	Species or species habitat known to occur within area
Calidris melanotos Pectoral Sandpiper [858]		Species or species habitat known to occur within area
Calidris ruficollis Red-necked Stint [860]		Roosting known to occur within area
Calidris subminuta Long-toed Stint [861]		Roosting known to occur within area
Calidris tenuirostris Great Knot [862]	Critically Endangered	Roosting known to occur within area

Name	Threatened	Type of Presence
Charadrius dubius Little Ringed Plover [896]		Roosting known to occur within area
Charadrius leschenaultii Greater Sand Plover, Large Sand Plover [877]	Vulnerable	Species or species habitat known to occur within area
Charadrius mongolus Lesser Sand Plover, Mongolian Plover [879]	Endangered	Roosting known to occur within area
Charadrius veredus Oriental Plover, Oriental Dotterel [882]		Roosting known to occur within area
Gallinago megala Swinhoe's Snipe [864]		Roosting known to occur within area
Gallinago stenura Pin-tailed Snipe [841]		Roosting likely to occur within area
Glareola maldivarum Oriental Pratincole [840]		Roosting known to occur within area
Limicola falcinellus Broad-billed Sandpiper [842]		Roosting known to occur within area
Limnodromus semipalmatus Asian Dowitcher [843]		Species or species habitat likely to occur within area
Limosa lapponica Bar-tailed Godwit [844]		Species or species habitat known to occur within area
Limosa limosa Black-tailed Godwit [845]		Roosting known to occur within area
Numenius madagascariensis Eastern Curlew, Far Eastern Curlew [847]	Critically Endangered	Species or species habitat known to occur within area
Numenius minutus Little Curlew, Little Whimbrel [848]		Roosting known to occur within area
Numenius phaeopus Whimbrel [849]		Roosting known to occur within area
Pandion haliaetus Osprey [952]		Breeding known to occur within area
Pluvialis fulva Pacific Golden Plover [25545]		Roosting known to occur within area
Pluvialis squatarola Grey Plover [865]		Roosting known to occur within area
Tringa brevipes Grey-tailed Tattler [851]		Roosting known to occur within area
Tringa glareola Wood Sandpiper [829]		Roosting known to occur within area
Tringa incana Wandering Tattler [831]		Roosting known to occur within area
Tringa nebularia Common Greenshank, Greenshank [832]		Species or species habitat known to occur within area
Tringa stagnatilis Marsh Sandpiper, Little Greenshank [833]		Roosting known to occur within area

Name	Threatened	Type of Presence
Xenus cinereus Terek Sandpiper [59300]		Roosting known to occur within area

Other Matters Protected by the EPBC Act

Commonwealth Land [\[Resource Information \]](#)

The Commonwealth area listed below may indicate the presence of Commonwealth land in this vicinity. Due to the unreliability of the data source, all proposals should be checked as to whether it impacts on a Commonwealth area, before making a definitive decision. Contact the State or Territory government land department for further information.

Name
Commonwealth Land -
Commonwealth Land - Australian Government Solicitor
Commonwealth Land - Department of Administrative Services
Commonwealth Land - Department of Immigration Local Government & Ethnic Affairs
Commonwealth Land - Department of Transport & Regional Development
Commonwealth Land - Deputy Crown Solicitor
Defence - AUSTRALIAN ARMY BAND - DARWIN
Defence - DARWIN RELOCATIONS CENTRE
Defence - DEFENCE FORCE CAREERS REFERENCE CENTRE
Defence - Esanda Builidng
Defence - LARRAKEYAH BARRACKS
Defence - Patrol Boat Base (DARWIN NAVAL BASE)
Defence - RAAF BASE DARWIN
Defence - STOKES HILL OIL FUEL INSTALLATION
Defence - WINNELLIE ONE
Defence - WINNELLIE TWO

Commonwealth Heritage Places [\[Resource Information \]](#)

Name	State	Status
Historic		
Larrakeyah Barracks Headquarters Building	NT	Listed place
Larrakeyah Barracks Precinct	NT	Listed place
Larrakeyah Barracks Sergeants Mess	NT	Listed place
RAAF Base Commanding Officers Residence	NT	Listed place
RAAF Base Precinct	NT	Listed place
RAAF Base Tropical Housing Type 2	NT	Listed place
RAAF Base Tropical Housing Type 3	NT	Listed place

Listed Marine Species [\[Resource Information \]](#)

* Species is listed under a different scientific name on the EPBC Act - Threatened Species list.

Name	Threatened	Type of Presence
Birds		
Acrocephalus orientalis Oriental Reed-Warbler [59570]		Species or species habitat may occur within area
Actitis hypoleucos Common Sandpiper [59309]		Species or species habitat known to occur within area

Name	Threatened	Type of Presence
Anous stolidus Common Noddy [825]		Species or species habitat likely to occur within area
Anseranas semipalmata Magpie Goose [978]		Species or species habitat may occur within area
Apus pacificus Fork-tailed Swift [678]		Species or species habitat likely to occur within area
Ardea ibis Cattle Egret [59542]		Species or species habitat may occur within area
Arenaria interpres Ruddy Turnstone [872]		Roosting known to occur within area
Calidris acuminata Sharp-tailed Sandpiper [874]		Roosting known to occur within area
Calidris alba Sanderling [875]		Roosting known to occur within area
Calidris canutus Red Knot, Knot [855]	Endangered	Species or species habitat known to occur within area
Calidris ferruginea Curlew Sandpiper [856]	Critically Endangered	Species or species habitat known to occur within area
Calidris melanotos Pectoral Sandpiper [858]		Species or species habitat known to occur within area
Calidris ruficollis Red-necked Stint [860]		Roosting known to occur within area
Calidris subminuta Long-toed Stint [861]		Roosting known to occur within area
Calidris tenuirostris Great Knot [862]	Critically Endangered	Roosting known to occur within area
Calonectris leucomelas Streaked Shearwater [1077]		Species or species habitat known to occur within area
Charadrius dubius Little Ringed Plover [896]		Roosting known to occur within area
Charadrius leschenaultii Greater Sand Plover, Large Sand Plover [877]	Vulnerable	Species or species habitat known to occur within area
Charadrius mongolus Lesser Sand Plover, Mongolian Plover [879]	Endangered	Roosting known to occur within area
Charadrius ruficapillus Red-capped Plover [881]		Roosting known to occur within area
Charadrius veredus Oriental Plover, Oriental Dotterel [882]		Roosting known to occur within area
Chrysococcyx osculans Black-eared Cuckoo [705]		Species or species habitat known to occur within area
Fregata ariel Lesser Frigatebird, Least Frigatebird [1012]		Species or species habitat known to occur

Name	Threatened	Type of Presence
Fregata minor Great Frigatebird, Greater Frigatebird [1013]		within area Species or species habitat known to occur within area
Gallinago megala Swinhoe's Snipe [864]		Roosting known to occur within area
Gallinago stenura Pin-tailed Snipe [841]		Roosting likely to occur within area
Glareola maldivarum Oriental Pratincole [840]		Roosting known to occur within area
Haliaeetus leucogaster White-bellied Sea-Eagle [943]		Species or species habitat known to occur within area
Heteroscelus brevipes Grey-tailed Tattler [59311]		Roosting known to occur within area
Heteroscelus incanus Wandering Tattler [59547]		Roosting known to occur within area
Himantopus himantopus Pied Stilt, Black-winged Stilt [870]		Roosting known to occur within area
Hirundo daurica Red-rumped Swallow [59480]		Species or species habitat known to occur within area
Hirundo rustica Barn Swallow [662]		Species or species habitat known to occur within area
Limicola falcinellus Broad-billed Sandpiper [842]		Roosting known to occur within area
Limnodromus semipalmatus Asian Dowitcher [843]		Species or species habitat likely to occur within area
Limosa lapponica Bar-tailed Godwit [844]		Species or species habitat known to occur within area
Limosa limosa Black-tailed Godwit [845]		Roosting known to occur within area
Merops ornatus Rainbow Bee-eater [670]		Species or species habitat may occur within area
Motacilla cinerea Grey Wagtail [642]		Species or species habitat known to occur within area
Motacilla flava Yellow Wagtail [644]		Species or species habitat known to occur within area
Numenius madagascariensis Eastern Curlew, Far Eastern Curlew [847]	Critically Endangered	Species or species habitat known to occur within area
Numenius minutus Little Curlew, Little Whimbrel [848]		Roosting known to occur within area
Numenius phaeopus Whimbrel [849]		Roosting known to occur within area

Name	Threatened	Type of Presence
Pandion haliaetus Osprey [952]		Breeding known to occur within area
Pluvialis fulva Pacific Golden Plover [25545]		Roosting known to occur within area
Pluvialis squatarola Grey Plover [865]		Roosting known to occur within area
Rhipidura rufifrons Rufous Fantail [592]		Species or species habitat known to occur within area
Rostratula benghalensis (sensu lato) Painted Snipe [889]	Endangered*	Species or species habitat may occur within area
Sterna albifrons Little Tern [813]		Species or species habitat may occur within area
Stiltia isabella Australian Pratincole [818]		Roosting known to occur within area
Tringa glareola Wood Sandpiper [829]		Roosting known to occur within area
Tringa nebularia Common Greenshank, Greenshank [832]		Species or species habitat known to occur within area
Tringa stagnatilis Marsh Sandpiper, Little Greenshank [833]		Roosting known to occur within area
Xenus cinereus Terek Sandpiper [59300]		Roosting known to occur within area
Fish		
Campichthys tricarinatus Three-keel Pipefish [66192]		Species or species habitat may occur within area
Choeroichthys brachysoma Pacific Short-bodied Pipefish, Short-bodied Pipefish [66194]		Species or species habitat may occur within area
Choeroichthys suillus Pig-snouted Pipefish [66198]		Species or species habitat may occur within area
Corythoichthys amplexus Fijian Banded Pipefish, Brown-banded Pipefish [66199]		Species or species habitat may occur within area
Corythoichthys flavofasciatus Reticulate Pipefish, Yellow-banded Pipefish, Network Pipefish [66200]		Species or species habitat may occur within area
Corythoichthys haematopterus Reef-top Pipefish [66201]		Species or species habitat may occur within area
Doryrhamphus excisus Bluestripe Pipefish, Indian Blue-stripe Pipefish, Pacific Blue-stripe Pipefish [66211]		Species or species habitat may occur within area
Doryrhamphus janssi Cleaner Pipefish, Janss' Pipefish [66212]		Species or species habitat may occur within area
Festucalex cinctus Girdled Pipefish [66214]		Species or species habitat may occur within

Name	Threatened	Type of Presence area
Halicampus brocki Brock's Pipefish [66219]		Species or species habitat may occur within area
Halicampus grayi Mud Pipefish, Gray's Pipefish [66221]		Species or species habitat may occur within area
Halicampus spirostris Spiny-snout Pipefish [66225]		Species or species habitat may occur within area
Haliichthys taeniophorus Ribboned Pipehorse, Ribboned Seadragon [66226]		Species or species habitat may occur within area
Hippichthys cyanospilos Blue-speckled Pipefish, Blue-spotted Pipefish [66228]		Species or species habitat may occur within area
Hippichthys parvicarinatus Short-keel Pipefish, Short-keeled Pipefish [66230]		Species or species habitat may occur within area
Hippichthys penicillus Beady Pipefish, Steep-nosed Pipefish [66231]		Species or species habitat may occur within area
Hippocampus histrix Spiny Seahorse, Thorny Seahorse [66236]		Species or species habitat may occur within area
Hippocampus kuda Spotted Seahorse, Yellow Seahorse [66237]		Species or species habitat may occur within area
Hippocampus planifrons Flat-face Seahorse [66238]		Species or species habitat may occur within area
Hippocampus spinosissimus Hedgehog Seahorse [66239]		Species or species habitat may occur within area
Micrognathus micronotopterus Tidepool Pipefish [66255]		Species or species habitat may occur within area
Solegnathus hardwickii Pallid Pipehorse, Hardwick's Pipehorse [66272]		Species or species habitat may occur within area
Solegnathus lettiensis Gunther's Pipehorse, Indonesian Pipefish [66273]		Species or species habitat may occur within area
Solenostomus cyanopterus Robust Ghostpipefish, Blue-finned Ghost Pipefish, [66183]		Species or species habitat may occur within area
Syngnathoides biaculeatus Double-end Pipehorse, Double-ended Pipehorse, Alligator Pipefish [66279]		Species or species habitat may occur within area
Trachyrhamphus bicoarctatus Bentstick Pipefish, Bend Stick Pipefish, Short-tailed Pipefish [66280]		Species or species habitat may occur within area
Trachyrhamphus longirostris Straightstick Pipefish, Long-nosed Pipefish, Straight Stick Pipefish [66281]		Species or species habitat may occur within area

Name	Threatened	Type of Presence
Mammals		
Dugong dugon Dugong [28]		Species or species habitat known to occur within area
Reptiles		
Acalyptophis peronii Horned Seasnake [1114]		Species or species habitat may occur within area
Aipysurus duboisii Dubois' Seasnake [1116]		Species or species habitat may occur within area
Aipysurus eydouxii Spine-tailed Seasnake [1117]		Species or species habitat may occur within area
Aipysurus laevis Olive Seasnake [1120]		Species or species habitat may occur within area
Astrotia stokesii Stokes' Seasnake [1122]		Species or species habitat may occur within area
Caretta caretta Loggerhead Turtle [1763]	Endangered	Foraging, feeding or related behaviour known to occur within area
Chelonia mydas Green Turtle [1765]	Vulnerable	Breeding known to occur within area
Crocodylus johnstoni Freshwater Crocodile, Johnston's Crocodile, Johnstone's Crocodile [1773]		Species or species habitat may occur within area
Crocodylus porosus Salt-water Crocodile, Estuarine Crocodile [1774]		Species or species habitat likely to occur within area
Dermochelys coriacea Leatherback Turtle, Leathery Turtle, Luth [1768]	Endangered	Breeding likely to occur within area
Disteira kingii Spectacled Seasnake [1123]		Species or species habitat may occur within area
Disteira major Olive-headed Seasnake [1124]		Species or species habitat may occur within area
Enhydrina schistosa Beaked Seasnake [1126]		Species or species habitat may occur within area
Eretmochelys imbricata Hawksbill Turtle [1766]	Vulnerable	Foraging, feeding or related behaviour known to occur within area
Hydrelaps darwiniensis Black-ringed Seasnake [1100]		Species or species habitat may occur within area
Hydrophis atriceps Black-headed Seasnake [1101]		Species or species habitat may occur within area
Hydrophis coggeri Slender-necked Seasnake [25925]		Species or species habitat may occur within area

Name	Threatened	Type of Presence
Hydrophis elegans Elegant Seasnake [1104]		Species or species habitat may occur within area
Hydrophis inornatus Plain Seasnake [1107]		Species or species habitat may occur within area
Hydrophis mcdowellii null [25926]		Species or species habitat may occur within area
Hydrophis ornatus Spotted Seasnake, Ornate Reef Seasnake [1111]		Species or species habitat may occur within area
Hydrophis pacificus Large-headed Seasnake, Pacific Seasnake [1112]		Species or species habitat may occur within area
Lapemis hardwickii Spine-bellied Seasnake [1113]		Species or species habitat may occur within area
Lepidochelys olivacea Olive Ridley Turtle, Pacific Ridley Turtle [1767]	Endangered	Breeding known to occur within area
Natator depressus Flatback Turtle [59257]	Vulnerable	Breeding known to occur within area
Parahydrophis mertoni Northern Mangrove Seasnake [1090]		Species or species habitat may occur within area
Pelamis platurus Yellow-bellied Seasnake [1091]		Species or species habitat may occur within area

Whales and other Cetaceans

[[Resource Information](#)]

Name	Status	Type of Presence
Mammals		
Balaenoptera edeni Bryde's Whale [35]		Species or species habitat may occur within area
Balaenoptera musculus Blue Whale [36]	Endangered	Species or species habitat may occur within area
Delphinus delphis Common Dolphin, Short-beaked Common Dolphin [60]		Species or species habitat may occur within area
Grampus griseus Risso's Dolphin, Grampus [64]		Species or species habitat may occur within area
Megaptera novaeangliae Humpback Whale [38]	Vulnerable	Species or species habitat may occur within area
Orcaella brevirostris Irrawaddy Dolphin [45]		Species or species habitat known to occur within area
Orcinus orca Killer Whale, Orca [46]		Species or species habitat may occur within area
Sousa chinensis Indo-Pacific Humpback Dolphin [50]		Breeding known to occur within area

Name	Status	Type of Presence
Stenella attenuata Spotted Dolphin, Pantropical Spotted Dolphin [51]		Species or species habitat may occur within area
Tursiops aduncus Indian Ocean Bottlenose Dolphin, Spotted Bottlenose Dolphin [68418]		Species or species habitat likely to occur within area
Tursiops aduncus (Arafura/Timor Sea populations) Spotted Bottlenose Dolphin (Arafura/Timor Sea populations) [78900]		Species or species habitat known to occur within area
Tursiops truncatus s. str. Bottlenose Dolphin [68417]		Species or species habitat may occur within area

Extra Information

State and Territory Reserves	[Resource Information]
Name	State
Casuarina	NT
Charles Darwin	NT
George Brown Darwin	NT

Invasive Species	[Resource Information]
Weeds reported here are the 20 species of national significance (WoNS), along with other introduced plants that are considered by the States and Territories to pose a particularly significant threat to biodiversity. The following feral animals are reported: Goat, Red Fox, Cat, Rabbit, Pig, Water Buffalo and Cane Toad. Maps from Landscape Health Project, National Land and Water Resources Audit, 2001.	

Name	Status	Type of Presence
Birds		
Acridotheres tristis Common Myna, Indian Myna [387]		Species or species habitat likely to occur within area
Columba livia Rock Pigeon, Rock Dove, Domestic Pigeon [803]		Species or species habitat likely to occur within area
Passer domesticus House Sparrow [405]		Species or species habitat likely to occur within area
Passer montanus Eurasian Tree Sparrow [406]		Species or species habitat likely to occur within area
Sturnus vulgaris Common Starling [389]		Species or species habitat likely to occur within area
Frogs		
Rhinella marina Cane Toad [83218]		Species or species habitat known to occur within area
Mammals		
Bos taurus Domestic Cattle [16]		Species or species habitat likely to occur within area

Name	Status	Type of Presence
Bubalus bubalis Water Buffalo, Swamp Buffalo [1]		Species or species habitat likely to occur within area
Canis lupus familiaris Domestic Dog [82654]		Species or species habitat likely to occur within area
Equus caballus Horse [5]		Species or species habitat likely to occur within area
Felis catus Cat, House Cat, Domestic Cat [19]		Species or species habitat likely to occur within area
Mus musculus House Mouse [120]		Species or species habitat likely to occur within area
Rattus rattus Black Rat, Ship Rat [84]		Species or species habitat likely to occur within area
Sus scrofa Pig [6]		Species or species habitat likely to occur within area
Plants		
Andropogon gayanus Gamba Grass [66895]		Species or species habitat likely to occur within area
Annona glabra Pond Apple, Pond-apple Tree, Alligator Apple, Bullock's Heart, Cherimoya, Monkey Apple, Bobwood, Corkwood [6311]		Species or species habitat may occur within area
Brachiaria mutica Para Grass [5879]		Species or species habitat likely to occur within area
Cabomba caroliniana Cabomba, Fanwort, Carolina Watershield, Fish Grass, Washington Grass, Watershield, Carolina Fanwort, Common Cabomba [5171]		Species or species habitat likely to occur within area
Cenchrus ciliaris Buffel-grass, Black Buffel-grass [20213]		Species or species habitat may occur within area
Dolichandra unguis-cati Cat's Claw Vine, Yellow Trumpet Vine, Cat's Claw Creeper, Funnel Creeper [85119]		Species or species habitat likely to occur within area
Hymenachne amplexicaulis Hymenachne, Olive Hymenachne, Water Stargrass, West Indian Grass, West Indian Marsh Grass [31754]		Species or species habitat likely to occur within area
Jatropha gossypifolia Cotton-leaved Physic-Nut, Bellyache Bush, Cotton-leaf Physic Nut, Cotton-leaf Jatropha, Black Physic Nut [7507]		Species or species habitat likely to occur within area
Lantana camara Lantana, Common Lantana, Kamara Lantana, Large-leaf Lantana, Pink Flowered Lantana, Red Flowered Lantana, Red-Flowered Sage, White Sage, Wild Sage [10892]		Species or species habitat likely to occur within area
Mimosa pigra Mimosa, Giant Mimosa, Giant Sensitive Plant, Thorny Sensitive Plant, Black Mimosa, Catclaw Mimosa, Bashful Plant [11223]		Species or species habitat likely to occur within area
Parkinsonia aculeata Parkinsonia, Jerusalem Thorn, Jelly Bean Tree, Horse Bean [12301]		Species or species habitat likely to occur

Name	Status	Type of Presence within area
Pennisetum polystachyon Mission Grass, Perennial Mission Grass, Missiongrass, Feathery Pennisetum, Feather Pennisetum, Thin Napier Grass, West Indian Pennisetum, Blue Buffel Grass [21194] Salvinia molesta Salvinia, Giant Salvinia, Aquarium Watermoss, Kariba Weed [13665]		Species or species habitat likely to occur within area Species or species habitat likely to occur within area

Reptiles

Hemidactylus frenatus Asian House Gecko [1708]		Species or species habitat likely to occur within area
Lepidodactylus lugubris Mourning Gecko [1712]		Species or species habitat likely to occur within area
Ramphotyphlops braminus Flowerpot Blind Snake, Brahminy Blind Snake, Cacing Besi [1258]		Species or species habitat known to occur within area

Nationally Important Wetlands

[Resource Information]

Name	State
Port Darwin	NT

Caveat

The information presented in this report has been provided by a range of data sources as acknowledged at the end of the report.

This report is designed to assist in identifying the locations of places which may be relevant in determining obligations under the Environment Protection and Biodiversity Conservation Act 1999. It holds mapped locations of World and National Heritage properties, Wetlands of International and National Importance, Commonwealth and State/Territory reserves, listed threatened, migratory and marine species and listed threatened ecological communities. Mapping of Commonwealth land is not complete at this stage. Maps have been collated from a range of sources at various resolutions.

Not all species listed under the EPBC Act have been mapped (see below) and therefore a report is a general guide only. Where available data supports mapping, the type of presence that can be determined from the data is indicated in general terms. People using this information in making a referral may need to consider the qualifications below and may need to seek and consider other information sources.

For threatened ecological communities where the distribution is well known, maps are derived from recovery plans, State vegetation maps, remote sensing imagery and other sources. Where threatened ecological community distributions are less well known, existing vegetation maps and point location data are used to produce indicative distribution maps.

Threatened, migratory and marine species distributions have been derived through a variety of methods. Where distributions are well known and if time permits, maps are derived using either thematic spatial data (i.e. vegetation, soils, geology, elevation, aspect, terrain, etc) together with point locations and described habitat; or environmental modelling (MAXENT or BIOCLIM habitat modelling) using point locations and environmental data layers.

Where very little information is available for species or large number of maps are required in a short time-frame, maps are derived either from 0.04 or 0.02 decimal degree cells; by an automated process using polygon capture techniques (static two kilometre grid cells, alpha-hull and convex hull); or captured manually or by using topographic features (national park boundaries, islands, etc). In the early stages of the distribution mapping process (1999-early 2000s) distributions were defined by degree blocks, 100K or 250K map sheets to rapidly create distribution maps. More reliable distribution mapping methods are used to update these distributions as time permits.

Only selected species covered by the following provisions of the EPBC Act have been mapped:

- migratory and
- marine

The following species and ecological communities have not been mapped and do not appear in reports produced from this database:

- threatened species listed as extinct or considered as vagrants
- some species and ecological communities that have only recently been listed
- some terrestrial species that overfly the Commonwealth marine area
- migratory species that are very widespread, vagrant, or only occur in small numbers

The following groups have been mapped, but may not cover the complete distribution of the species:

- non-threatened seabirds which have only been mapped for recorded breeding sites
- seals which have only been mapped for breeding sites near the Australian continent

Such breeding sites may be important for the protection of the Commonwealth Marine environment.

Coordinates

-12.451737 130.713912,-12.40463 130.707389,-12.406475 130.79322,-12.447546 130.793907,-12.450563 130.767299,-12.451737 130.713912

Acknowledgements

This database has been compiled from a range of data sources. The department acknowledges the following custodians who have contributed valuable data and advice:

- [-Office of Environment and Heritage, New South Wales](#)
- [-Department of Environment and Primary Industries, Victoria](#)
- [-Department of Primary Industries, Parks, Water and Environment, Tasmania](#)
- [-Department of Environment, Water and Natural Resources, South Australia](#)
- [-Department of Land and Resource Management, Northern Territory](#)
- [-Department of Environmental and Heritage Protection, Queensland](#)
- [-Department of Parks and Wildlife, Western Australia](#)
- [-Environment and Planning Directorate, ACT](#)
- [-Birdlife Australia](#)
- [-Australian Bird and Bat Banding Scheme](#)
- [-Australian National Wildlife Collection](#)
- [-Natural history museums of Australia](#)
- [-Museum Victoria](#)
- [-Australian Museum](#)
- [-South Australian Museum](#)
- [-Queensland Museum](#)
- [-Online Zoological Collections of Australian Museums](#)
- [-Queensland Herbarium](#)
- [-National Herbarium of NSW](#)
- [-Royal Botanic Gardens and National Herbarium of Victoria](#)
- [-Tasmanian Herbarium](#)
- [-State Herbarium of South Australia](#)
- [-Northern Territory Herbarium](#)
- [-Western Australian Herbarium](#)
- [-Australian National Herbarium, Canberra](#)
- [-University of New England](#)
- [-Ocean Biogeographic Information System](#)
- [-Australian Government, Department of Defence Forestry Corporation, NSW](#)
- [-Geoscience Australia](#)
- [-CSIRO](#)
- [-Australian Tropical Herbarium, Cairns](#)
- [-eBird Australia](#)
- [-Australian Government – Australian Antarctic Data Centre](#)
- [-Museum and Art Gallery of the Northern Territory](#)
- [-Australian Government National Environmental Science Program](#)
- [-Australian Institute of Marine Science](#)
- [-Reef Life Survey Australia](#)
- [-American Museum of Natural History](#)
- [-Queen Victoria Museum and Art Gallery, Inveresk, Tasmania](#)
- [-Tasmanian Museum and Art Gallery, Hobart, Tasmania](#)
- [-Other groups and individuals](#)

The Department is extremely grateful to the many organisations and individuals who provided expert advice and information on numerous draft distributions.

Please feel free to provide feedback via the [Contact Us](#) page.

© Commonwealth of Australia

Department of Agriculture Water and the Environment

GPO Box 858

Canberra City ACT 2601 Australia

+61 2 6274 1111

NR MAPS

Declared Weeds



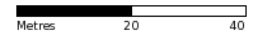
Legend

Weed Records (DENSITY CLASS)

- Scattered
- ✖ Scattered (Treated)
- Moderate
- ✖ Moderate (Treated)
- Dense
- ✖ Dense (Treated)
- Very Dense
- ✖ Very Dense (Treated)
- Unknown Density
- ✖ Unknown Density (Treated)

TENURE_TYPES

- Freehold
- Vacant
- Perpetual Pastoral Lease
- Reserve
- Government
- Crown Lease Term
- Crown Lease Perpetual
- Right to Freehold Title
- Special Purpose Lease
- Pastoral Lease
- Registered Mining Lease
- Other Lease



nrmmaps.nt.gov.au

Geospatial Services Branch



Creative Commons Attribution 4.0 International Public License

<https://creativecommons.org/licenses/by/4.0/legalcode>

Department of Environment,
Parks and Water Security
© Northern Territory Government