

# Clearing overview

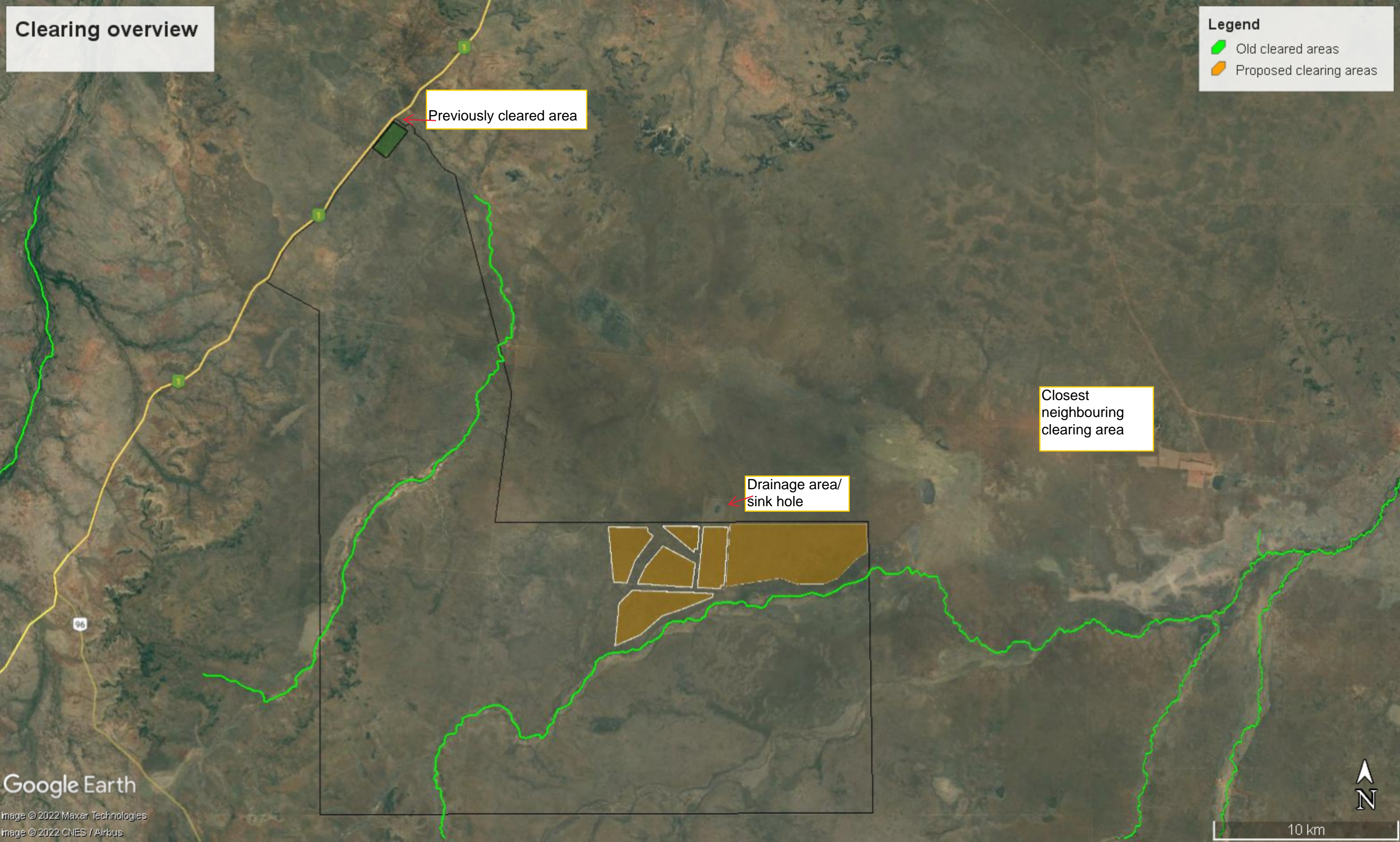
**Legend**

- Old cleared areas
- Proposed clearing areas

Previously cleared area




Closest neighbouring clearing area

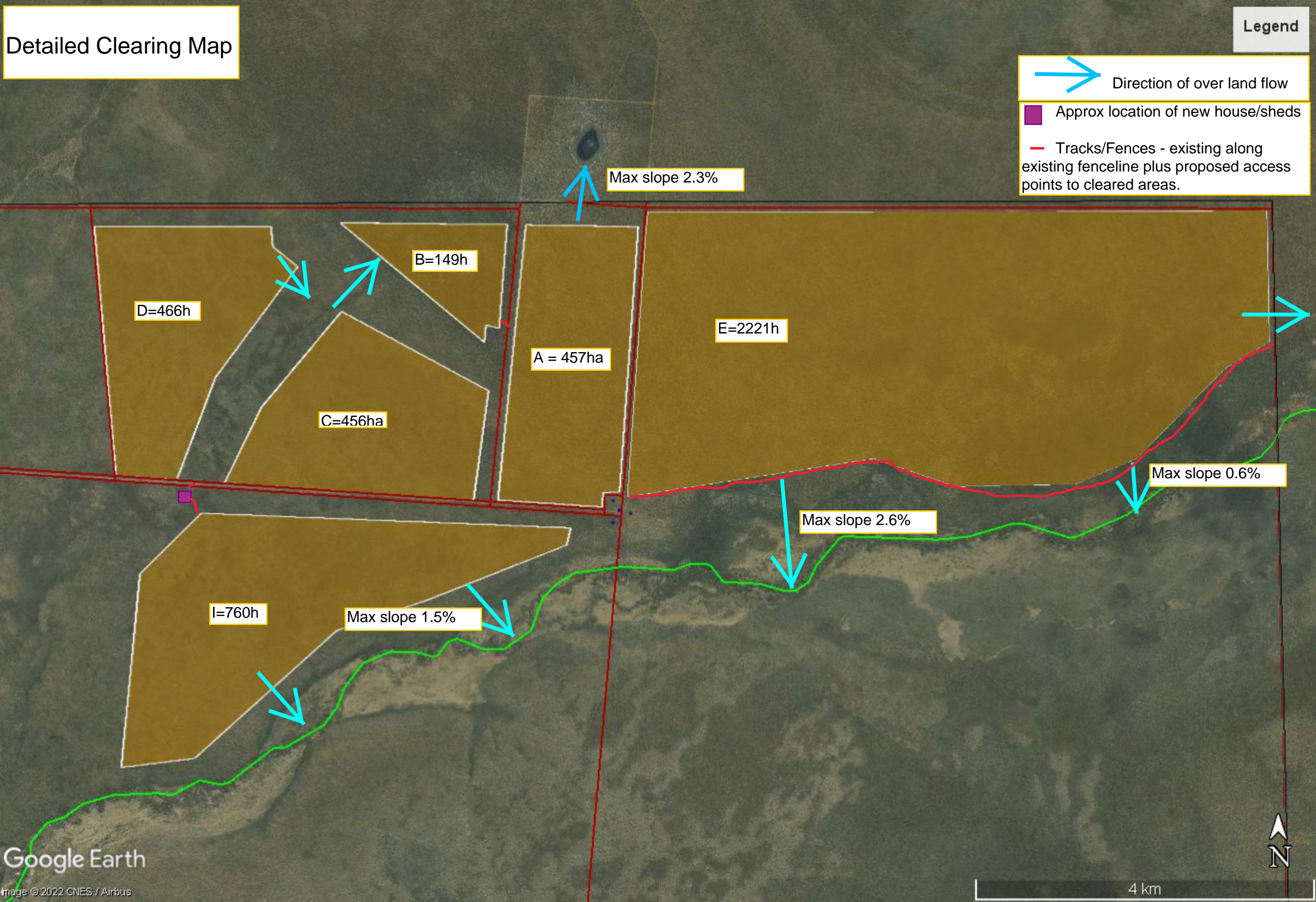
Drainage area/  
sink hole

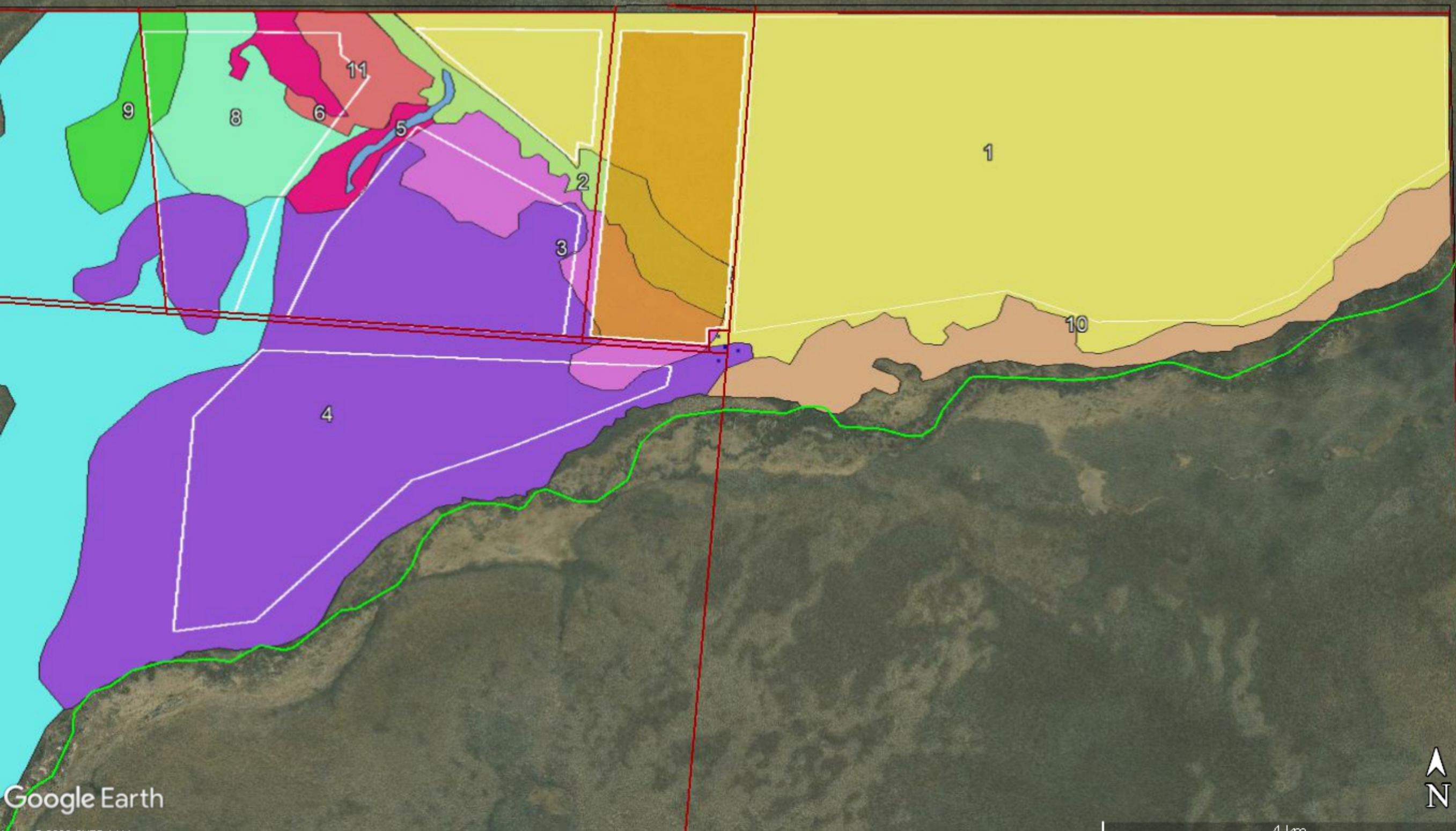


# Detailed Clearing Map

## Legend

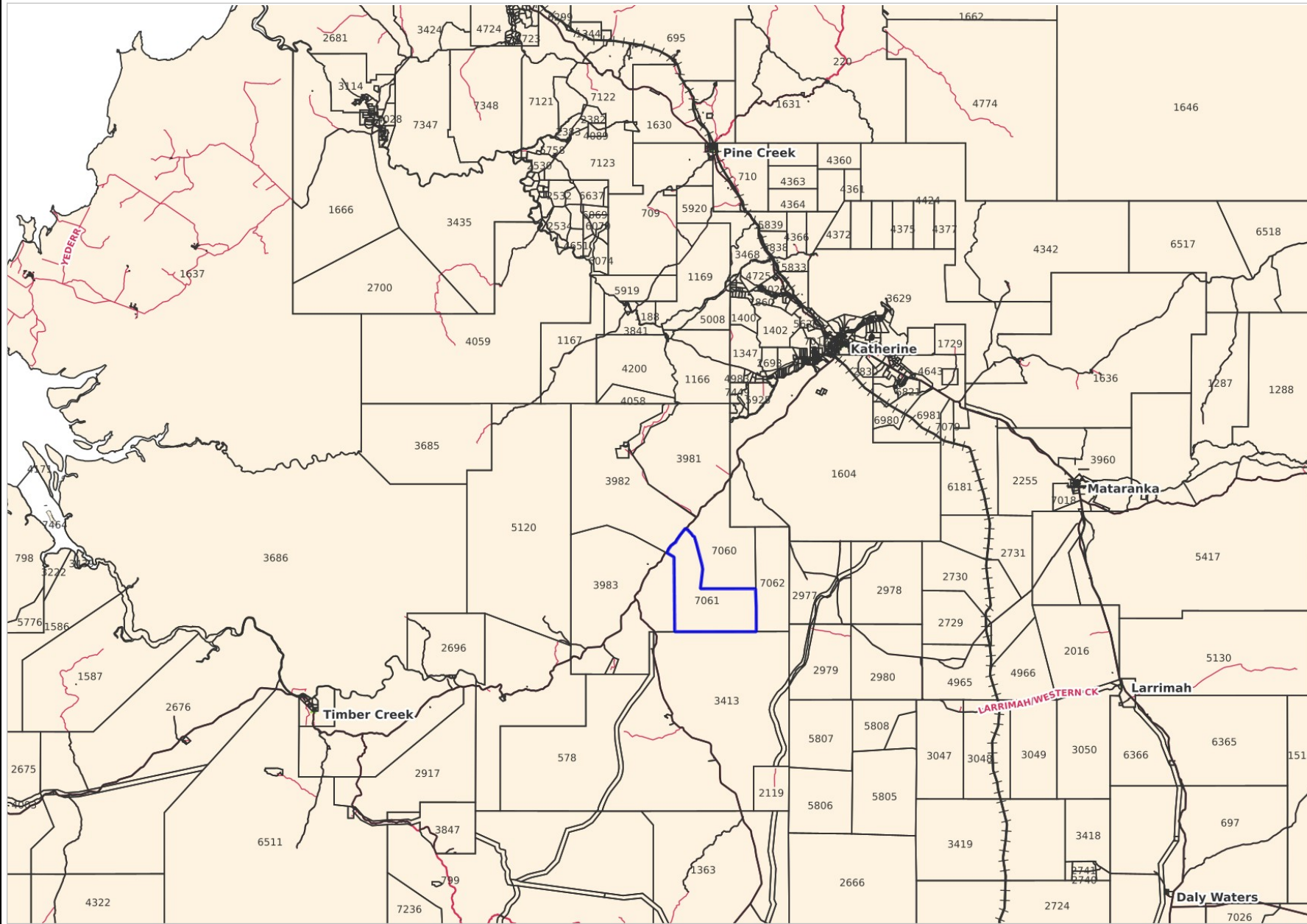
-  Direction of over land flow
-  Approx location of new house/sheds
-  Tracks/Fences - existing along existing fenceline plus proposed access points to cleared areas.



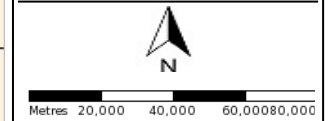


# NR MAPS

## Mathison context map



### Legend



[nrmaps.nt.gov.au](http://nrmaps.nt.gov.au)

Geospatial Services Branch



Creative Commons Attribution 4.0 International Public License

<https://creativecommons.org/licenses/by/4.0/legalcode>

Department of Environment,  
Parks and Water Security  
© Northern Territory Government