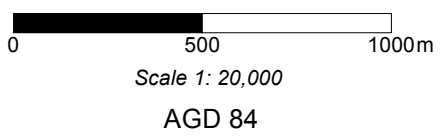


- **GW1** Existing Monitoring Bore
- **T4-2** New Monitoring Bore
- Levee Wall
- Channel
- - - Faults (Approx)
- **MAC3-P** Existing Production Bore
- **T3-1P** New Production Bore
- **WEMU8** Groundwater Exploration Bore
- - - Palaeochannel (Approx)



Job No.	42213689	
Prep. By	CMAC	19 Oct '05
Chk'd By	RIJV	19 Oct '05
Revision No.	1	

Xstrata PLC
GROUNDWATER AND SURFACE WATER
INVESTIGATIONS OF THE McARTHUR RIVER
BORE LOCATION PLAN

Figure 4
URS

Figure 4.srf

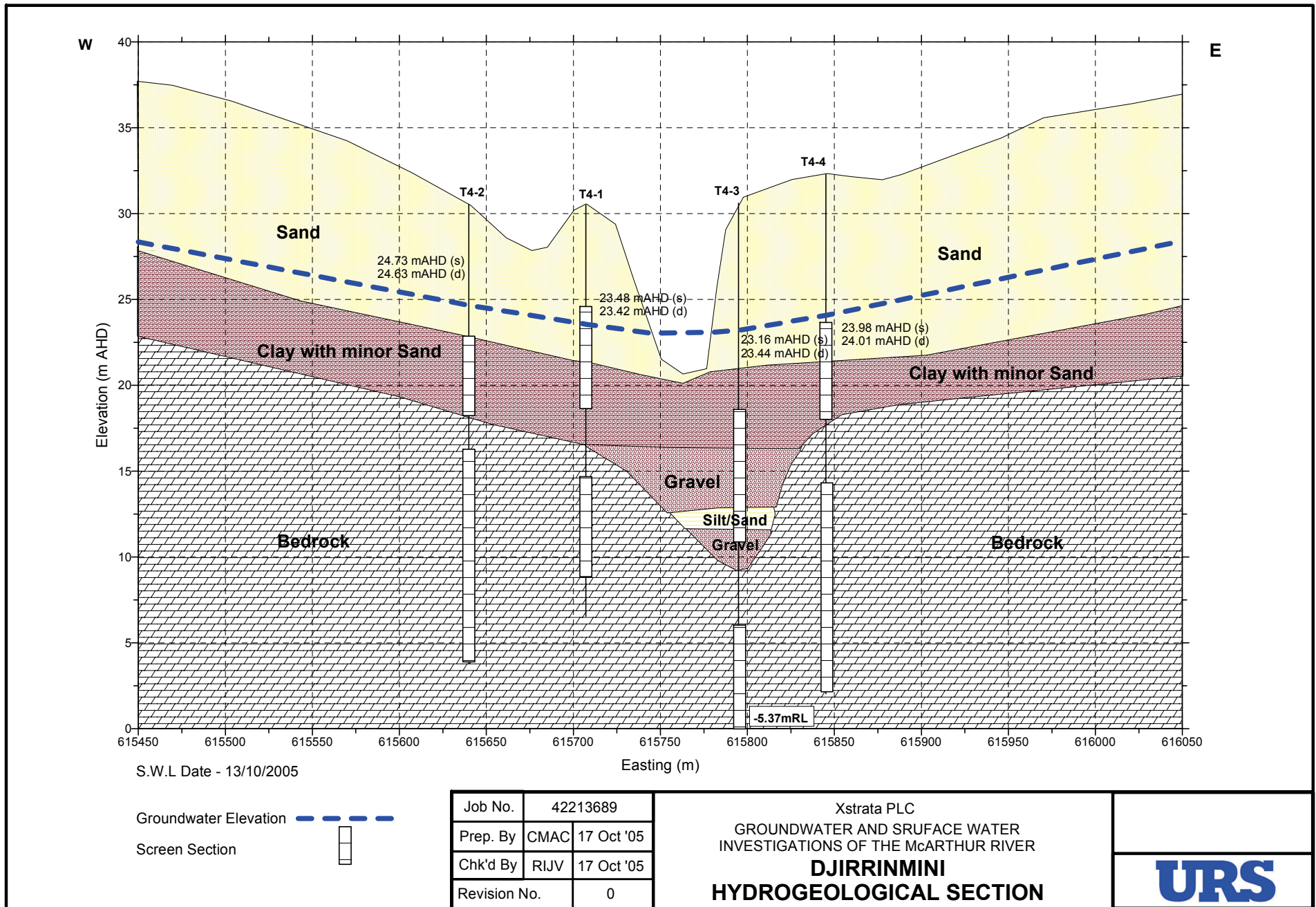
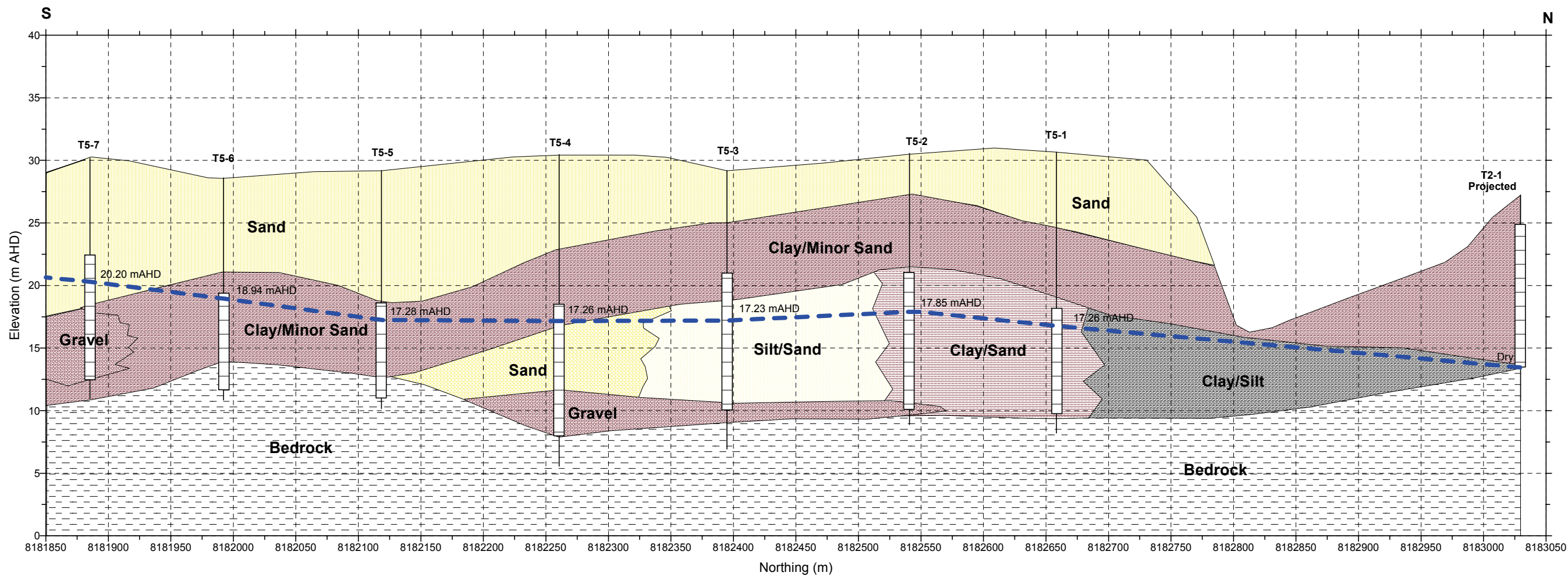




Figure 5.srf

Figure 5



S.W.L Date - 16/10/2005

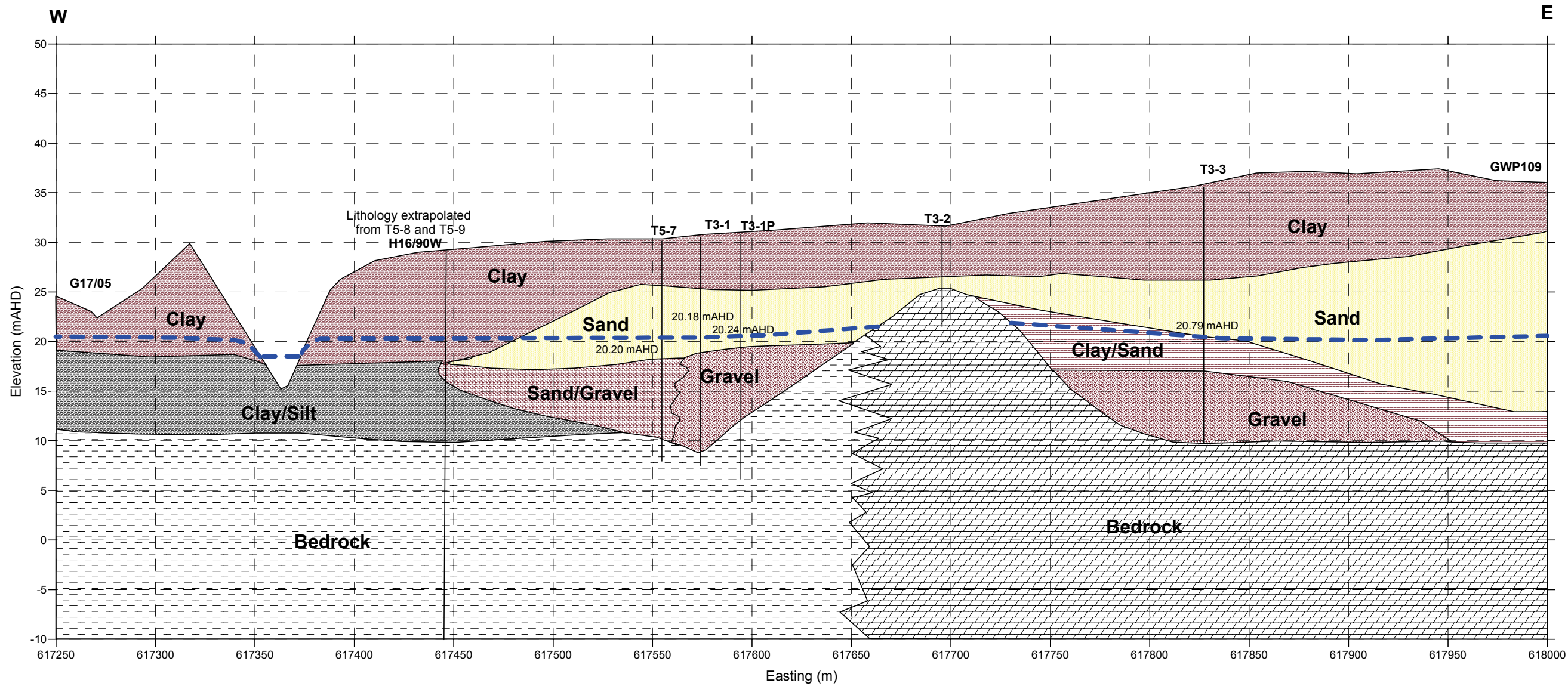
Groundwater Elevation 
 Screen Section 

Job No.	42213689	
Prep. By	CMAC	19 Oct '05
Chk'd By	RIJV	19 Oct '05
Revision No.	1	



Xstrata PLC
 GROUNDWATER AND SURFACE WATER
 INVESTIGATIONS OF THE McARTHUR RIVER
**EASTERN PIT EXTENT
 HYDROGEOLOGICAL SECTION**

Figure 6





S.W.L Date - 16/10/2005

Groundwater Elevation 
 Screen Section 

Job No.	42213689	
Prep. By	CMAC	20 Oct '05
Chk'd By	RIJV	20 Oct '05
Revision No.	1	

Xstrata PLC
 GROUNDWATER AND SURFACE WATER
 INVESTIGATIONS OF THE McARTHUR RIVER
**SOUTHERN PIT
 HYDROGEOLOGICAL SECTION**

Figure 7

