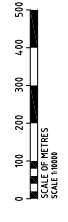


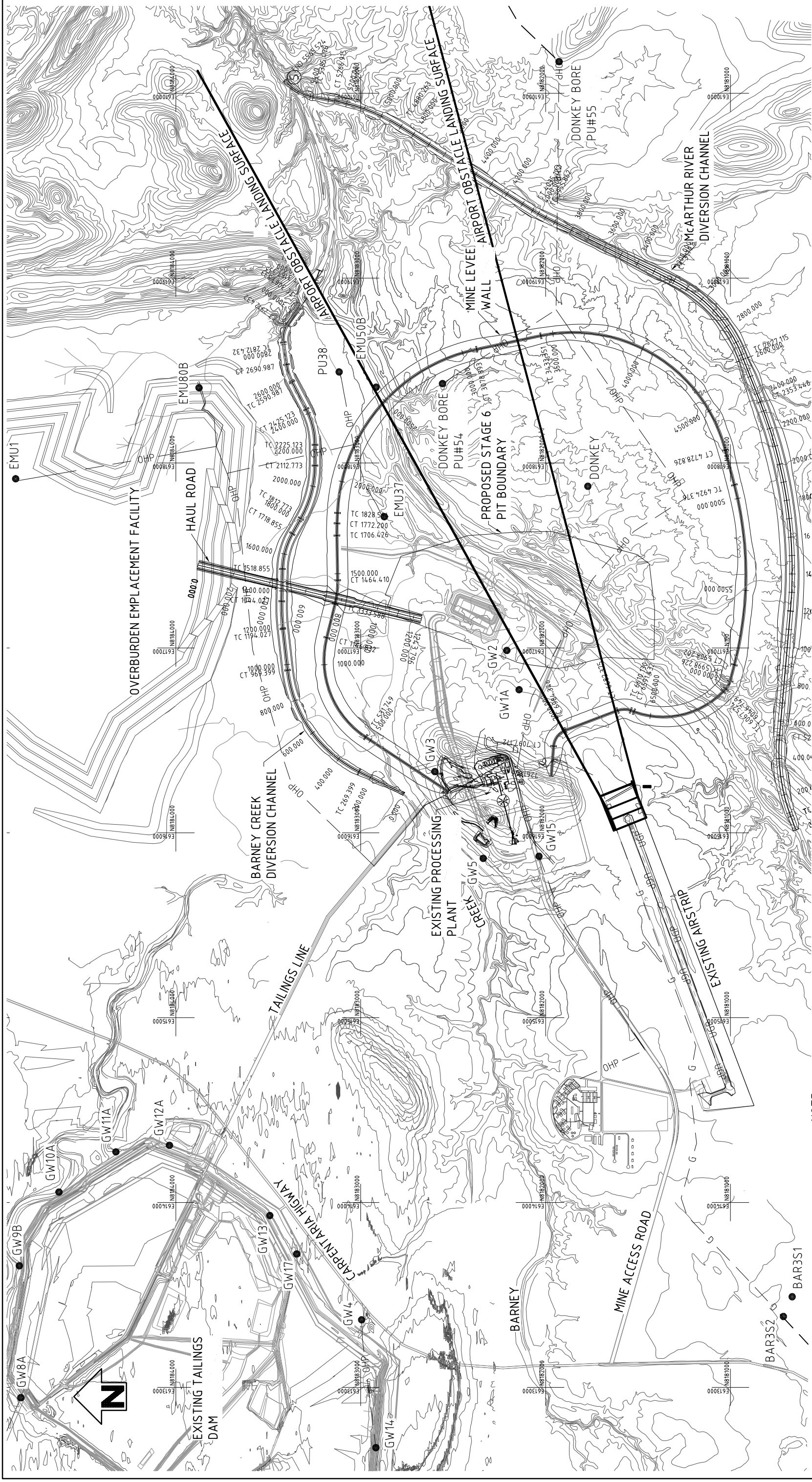
LAYOUT PLAN  
SCALE 1:10000

NOT FOR CONSTRUCTION

Kellogg Brown & Root Pty Ltd <b>KBR</b> Kellogg Brown & Root Pty Ltd ABN 91 007 640 317 555 Coronation Drive, Toowoong, Brisbane, Queensland, 4066 ph (07) 3721-4555 fax (07) 3721-6500		TITLE <b>McARTHUR RIVER MINE          EXPANSION PROJECT          LEVEE &amp; DIVERSIONS          LAYOUT PLAN</b>	
DRAFTING DESIGN DESIGN VERIFICATION PROJECT APPROVAL CLIENT		SIGNATURE NAME S.LINK G.DUGDALE G.LOVELL D.VENESS	
E HATCH & URS CHANGES D DEF LAYOUT AMENDED C BARNEY CREEK ALIGNMENT CHANGED B MINE LEVEE WALL AMENDED A ISSUE FOR REVIEW		DATE 22.06.06 19.04.06 21.02.06 14.02.06 21.12.05	
DRAWING No. BEE508		REVISIONS APPROVALS	
DRAWING SCALE AS SHOWN		ORIGINAL PROJECT No. BEE508	
DRAFTER: Y.FRASER		CAD FILE: BEE508-C-DWG-002.DWG	
DRAWING No. BEE508-C-DWG-002		REVISION E	





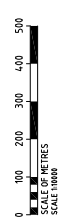


**LAYOUT PLAN**  
SCALE 1:10 000

- NOTE:**
1. SURVEY DATUM:  
DATUM HORIZONTAL - MRM TRUNCATED  
DATUM VERTICAL - AHD
  2. ALL DRAWINGS SHALL BE READ IN CONJUNCTION WITH THE PROJECT SPECIFICATIONS - BEE508-Z-SPEC-001 Rev 0.

- LEGEND**
- UGP --- UNDERGROUND POWER LINE
  - OHP --- OVERHEAD POWER LINE
  - G --- GAS PIPE LINE 168Ø
  - GROUNDWATER BORE

10mm ON ORIGINAL DRAWING



**NOT FOR CONSTRUCTION**

<p>Kellogg Brown &amp; Root Pty Ltd <b>KBR</b> Kellogg Brown &amp; Root Pty Ltd ABN 91 007 640 317 555 Coronation Drive, Toowoomba, Brisbane, Queensland, 4066 ph (07) 3721-4555 fax (07) 3721-6500</p>		<p>TITLE <b>McARTHUR RIVER MINE EXPANSION PROJECT SERVICES PLAN</b></p>	
<p>DRAWING SCALE <b>AS SHOWN</b></p>		<p>DRAWING No. <b>BEE508-C-DWG-004</b></p>	
<p>ORIG. SIZE <b>A1</b></p>		<p>PROJECT No. <b>BEE508</b></p>	
<p>DRAFTER: Y.FRASER</p>		<p>CAD FILE: BEE508-C-DWG-004.dwg</p>	
<p>REVISIONS</p>		<p>APPROVALS</p>	
<p>DESCRIPTION</p>		<p>DATE</p>	
<p>REV</p>		<p>CLIENT</p>	
<p>A ISSUE FOR REVIEW</p>		<p>21.12.05</p>	
<p>B MINE LEVEL WALL AMENDED</p>		<p>14.02.06</p>	
<p>C BARNEY CREEK ALIGNMENT CHANGED</p>		<p>21.02.06</p>	
<p>D DEF LAYOUT AMENDED</p>		<p>19.04.06</p>	
<p>E BOREHOLE LOCATION MARK ADDED TO LEGEND</p>		<p>23.05.06</p>	
<p>F HATCH &amp; URS CHANGES</p>		<p>22.06.06</p>	









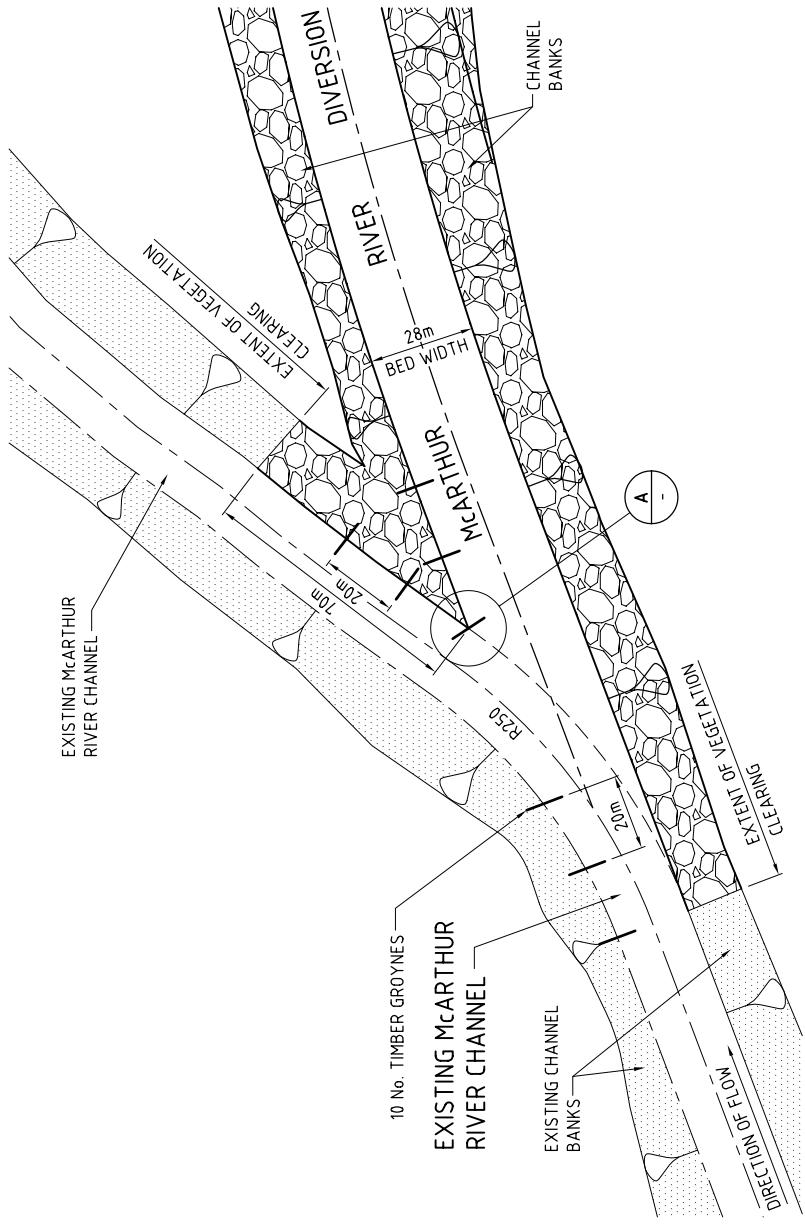


**LEGEND**

DUMPED ROCK BANK PROTECTION  
(REFER BEE508-C-DWG-103)



UNDISTURBED RIVER BANK



**UPSTREAM INLET BANK PROTECTION**

DETAIL  
SCALE 1:1000



DRAWING No.	DESCRIPTION	REVISIONS

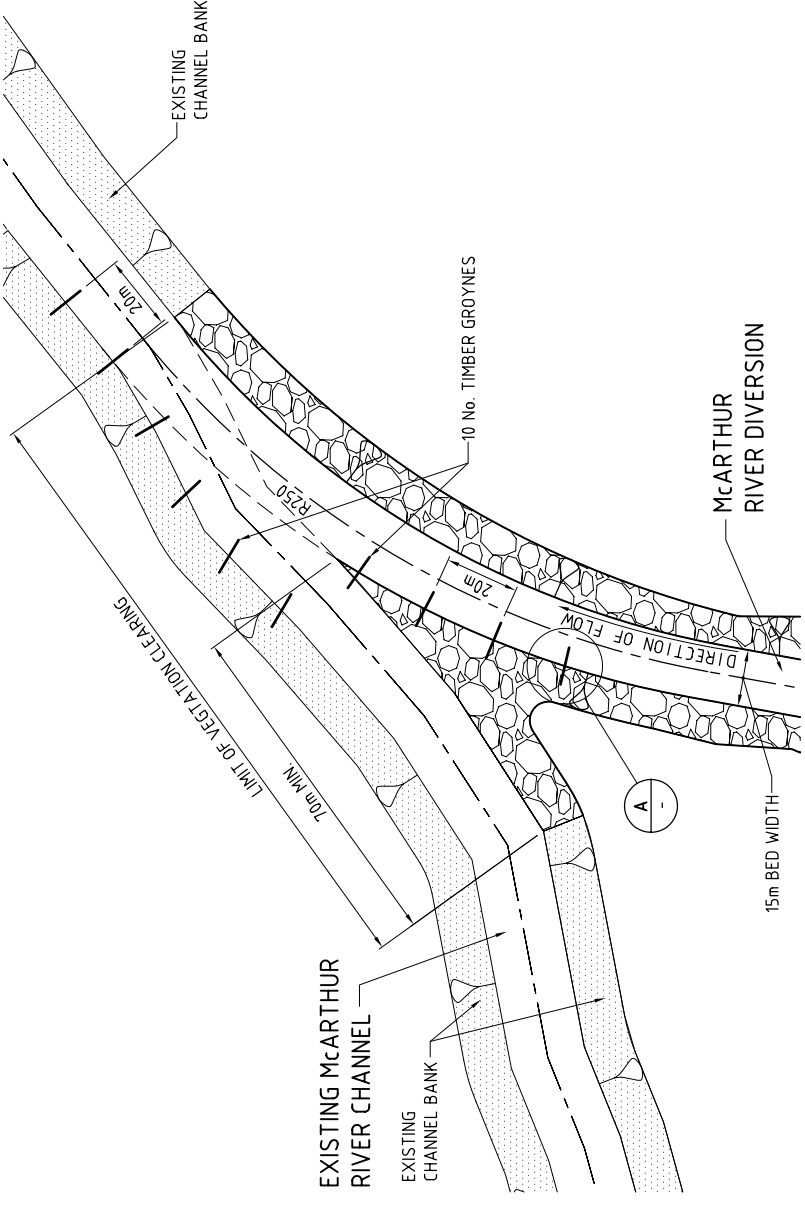
REV	DESCRIPTION	DATE	APPROVALS
F	HATCH CHANGES	23.05.06	
E	DRAWING COMPILED FROM HATCH SKETCHES NOTE ADDED	17.05.06	
D	HATCH & URS CHANGES	04.05.06	
C	HATCH & URS CHANGES	04.04.06	
B	ROCK VOLUME ADDED	21.02.06	
A	ISSUE FOR REVIEW	21.12.05	

DRAFTING	NAME	SIGNATURE
DESIGN	G.DJUGDALE	
DESIGN	G.LOVELL	
PROJECT	D.VENESS	
APPROVAL		
CLIENT		

DRAWING No.	ORIG. SIZE	PROJECT No.	DRAWING No.
AS SHOWN	A1	BEE508	BEE508

TITLE	DRAWING No.	REVISION
Kellogg Brown & Root Pty Ltd <b>KBR</b> Kellogg Brown & Root Pty Ltd ABN 91 007 660 317 555 Coronation Drive, Toowong Brisbane, Queensland, 4066 ph (07) 3721-6555 fax (07) 3721-6500	BEE508	
McARTHUR RIVER MINE EXPANSION PROJECT McARTHUR RIVER DIVERSION TYPICAL DETAILS - INLET/OUTLET	BEE508-C-DWG-104	F

DRAFTING	NAME	SIGNATURE

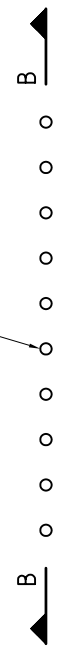


**DOWNSTREAM OUTLET BANK PROTECTION**

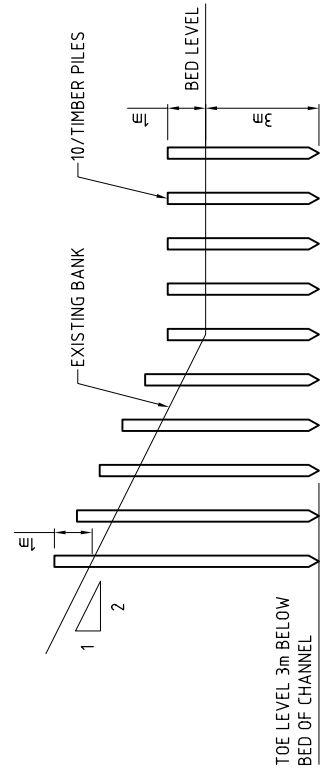
DETAIL  
SCALE 1:1000



300mm to 450mm DIAMETER  
DRIVEN TIMBER PILES AT 12m  
CENTRES



**PLAN**



**SECTION B-B**

**TIMBER GROYNES**

DETAIL  
SCALE 1:200



NOTE: THIS DRAWING HAS BEEN COMPILED FROM SKETCHES PROVIDED BY CONNELL HATCH

NOT FOR CONSTRUCTION