

APPENDIX E

Public Consultation Report





CLIENTS | PEOPLE | PERFORMANCE

Vista Gold Australia Pty Ltd

Mt Todd Gold Project Public Consultation Report

May 2013



This Public Consultation Report (“Report”):

1. *Has been prepared by GHD Australia Pty Ltd (GHD) for Vista Gold Australia Pty Ltd (Vista Gold)*
2. *May only be used and relied on by Vista Gold*
3. *Must not be copied to, used by, or relied on by any person other than Vista Gold without the prior written consent of GHD*
4. *May only be used for the purpose of the Mt Todd Gold Project and must not be used for any other purpose.*

GHD and its servants, employees and officers otherwise expressly disclaim responsibility to any person other than Vista Gold arising from or in connection with this Report.

To the maximum extent permitted by law, all implied warranties and conditions in relation to the services provided by GHD and the Report are excluded unless they are expressly stated to apply in this Report.

The services undertaken by GHD in connection with preparing this Report:

- *Were limited to those specifically detailed in section 1.4 of this Report relating to public consultation activities undertaken as part of developing the Draft Environmental Impact Statement for the Mt Todd Gold Project*
- *Did not include any other public relations or project positioning activities undertaken separately by Vista Gold or consultation with landholders and Traditional Owners relating to contractual negotiations and compensation matters. Vista Gold is addressing these matters separately.*

The opinions, conclusions and any recommendations in this Report are based on assumptions made by GHD when undertaking services and preparing the Report (“Assumptions”). GHD expressly disclaims responsibility for any error in, or omission from, this Report arising from or in connection with any of the Assumptions being incorrect.

Subject to the paragraphs in this section of the Report, the opinions, conclusions and any recommendations in this Report are based on conditions encountered and information reviewed at the time of preparation and may be relied on for 6 months, after which time, GHD expressly disclaims responsibility for any error in, or omission from, this Report arising from or in connection with those opinions, conclusions and any recommendations.



Contents

1.	Introduction	1
1.1	Proponent	1
1.2	Project Overview	1
1.3	Consultation Objective	2
1.4	Consultation Plan	3
1.5	Consultation Approach	3
1.6	Stages of Consultation	5
1.7	Integration with Other Draft EIS Technical Studies	6
1.8	Project Stakeholders	7
2.	Consultation to Date	10
2.1	Consultation Activities	10
2.2	Communication Tools	13
2.3	Social Impact Assessment Consultation	16
3.	Major Themes of the Consultation Process	18
3.1	Housing and Accommodation	18
3.2	Employment and Training	18
3.3	Business and Economic Development	19
3.4	Workforce	19
3.5	Indigenous Employment and Business Aspirations	20
3.6	Community Infrastructure and Service Provision	20
3.7	Environment	20
3.8	Traffic and Transport	20
3.9	Community	20
4.	Results of Consultation	23
4.1	Community Information Sessions	23
4.2	Meetings with Local Government	25
4.3	NT Government Briefings	26
4.4	Key Stakeholder Meetings	27
4.5	Meeting of the Mt Todd Rehabilitation Reference Group	30
4.6	Community Views Survey	30
5.	Future Consultation with Stakeholders	34
5.1	Post Draft EIS Public Exhibition Period	34



5.2	Ongoing Consultation Activities	34
6.	References	35

Table Index

Table 1	Key Stakeholders	8
Table 2	Summary of Community Information Sessions	11
Table 3	Summary of NT Government Agency Briefings and Meetings	13
Table 4	Utilisation of Project Contact Channels	14
Table 5	Summary of Editorial Coverage	15
Table 6	Community update schedule	15
Table 7	Community updates on Mt Todd website	15
Table 8	Community Feedback on Accommodation Options	19
Table 9	Major Issues Identified During Draft EIS Consultation	21
Table 10	Key Issues Raised at Katherine Show Information Stands	23
Table 11	Key Issues Raised at Katherine Shopping Centre Community Drop In	24
Table 12	Key Issues Raised at Pine Creek Community Information Centre	24
Table 13	Key Issues Raised at Meetings with Local Government	25
Table 14	Key Issues Raised at NT Government Briefings	26
Table 15	Key Issues Raised at Key Stakeholder Meetings	28

Figure Index

Figure 1	IAP2 Public Participation Spectrum	4
Figure 2	Draft EIS Consultation Stages and Timeframes	6
Figure 3	Links between Draft EIS and SIA Consultation	7
Figure 4	Draft EIS Consultation Activities and Communication Tools	10

Appendices

- A Project Fact Sheets and Community Updates
- B Community Views Survey
- C Public Notices and Advertising
- D Media Release
- E Mt Todd Web Page



1. Introduction

The Consultation Report (this Report) outlines the public consultation process undertaken as part of the Draft Environmental Impact Statement (EIS) for the Mt Todd Gold Project (the Project). The overall aim of consultation was to:

Inform stakeholders and the broader community of the Project, actively seek their involvement in the environmental impact assessment, and report back on how this input was considered in the Project's outcomes.

This report summarises the results and outcomes of consultation undertaken for the Project consistent with the requirements of section 9 of the *Guidelines for the Preparation of an Environmental Impact Statement: Mt Todd Gold Project, Katherine Region, NT (September 2011)* (NT EPA (formerly NRETAS) 2011).

1.1 Proponent

The Proponent for this Project is Vista Gold Australia Pty Ltd (Vista Gold).

1.2 Project Overview

Vista Gold proposes to re-establish and re-open the Mt Todd Gold Mine, located 55km north of Katherine and 250km south of Darwin.

Mining will be an open-pit truck and shovel operation, using large haul trucks, hydraulic shovels and front end loaders to transport materials to the crusher, stockpiles, Run of Mine (ROM) pad and waste dump. Extracted ore, will be processed in an ore processing plant where it will be crushed, milled and then carbon in leach (CIL) leached followed by adsorption, desorption and recovery leading to gold dore (unrefined gold).

Approximately 17.8 million tonnes per annum (Mtpa) of ore will be processed. Gold dore will be transported for onward secure shipment to a refinery.

The Project, based on current known data, will have a life of around 19 years inclusive of construction, operations and closure. Construction is anticipated to commence in the first quarter of 2014 and take two years, including 6 months pre-production. The mine is scheduled to operate for a further 13 years. Closure and rehabilitation of the mine is expected to take four years.

The key elements of the Project include:

1.2.1 Mining and Mining Infrastructure

- ▶ extension of the existing Batman Pit;
- ▶ expansion of the existing waste rock dump (WRD);
- ▶ construction of a Run of Mine (ROM) pad and ore stockpile;
- ▶ construction of an Ammonium Nitrate and Fuel Oil (ANFO) Facility;
- ▶ construction of heavy and light vehicle workshop and administration offices, and facilities comprising wash down area, tyre change facility, lube storage facility etc; and
- ▶ construction of haul roads and access roads.



1.2.2 Process Plant and Associated Facilities

- ▶ Ore Processing Plant capable of processing approximately 50,000 tonnes per day (tpd) of ore;
- ▶ processing and / or reclamation of the existing low grade ore (LGO) stockpile, residual Heap Leach material and scats stockpile, and construction and processing of new LGO stockpile with a footprint of approximately 47ha;
- ▶ raising the existing tailings storage facility (TSF1) from 16m to approximately 34m above ground level;
- ▶ construction of a new TSF2, approximately 300ha in area and up to 60m high (RL 175m);
- ▶ diversion of Horseshoe Creek and Stow Creek adjacent to TSF2 to provide flood protection;
- ▶ rehabilitation of the existing heap leach pad (HLP), if residual HLP material is not processed through the new plant;
- ▶ chemical and reagent storage and handling facility; and
- ▶ process plant workshops, administration offices, control room etc.

1.2.3 Other Infrastructure

- ▶ gas fired Power Station, including re-routing of the existing gas pipeline;
- ▶ anaerobic treatment wetlands, approximately 10ha in area;
- ▶ a 2m high raising of the raw water dam (RWD) and an increase in the area of inundation;
- ▶ construction of saddle dams at the RWD and TSF1;
- ▶ construction of three coffer dams at Retention Pond 1 (RP1) and deepening of RP1;
- ▶ water treatment plant;
- ▶ security gate house;
- ▶ potential re-alignment of access roads;
- ▶ site wide drainage, sediment traps; and
- ▶ modification to existing fuel storage and distribution facility.

1.3 Consultation Objective

The overall consultation aim above was supported by four objectives:

1. establish an open two-way flow of information, designed to meet both community, government and the proponent's requirements in achieving a transparent, meaningful and appropriate consultation process;
2. communicate detailed project information in an easy to interpret format;
3. enable opportunities for local and regional communities, and other stakeholders to identify issues, impacts and possible mitigation measures to be documented for consideration as part of the Draft EIS; and
4. build community understanding and support of the EIS process.



1.4 Consultation Plan

A Consultation Plan was developed to guide effective and timely delivery of Draft EIS consultation activities. The Plan identified:

- ▶ the types of activities to be undertaken;
- ▶ timing of activities;
- ▶ identification of key stakeholder and community representatives;
- ▶ integration with other Draft EIS activities and the project development process;
- ▶ consultation responsibilities;
- ▶ communication protocols; and
- ▶ reporting and feedback arrangements.

The Draft Consultation Plan was reviewed and approved by Vista Gold prior to public consultation activities being undertaken. The scope of the Consultation Plan excluded other 'non Draft EIS' communication that may be developed and implemented independently by Vista Gold, for example:

- ▶ Project positioning;
- ▶ public relations, marketing and promotion of the Project; and
- ▶ media management and advertising.

1.5 Consultation Approach

Consultation and engagement strategies have been developed in accordance with best practice standards for community consultation and stakeholder engagement including the core values and principles of the International Association of Public Participation (IAP2) (IAP2, 2007). IAP2 has developed a tool to define the level of public participation as a spectrum beginning with *Inform*, *Consult* and then moving on to *Involve*, *Collaborate* and *Empower* (Figure 1).

Stakeholders were engaged using a range of consultation and communication techniques, including face-to-face meetings, community views surveys, workshops, briefings, public information sessions, fact sheets and web-based features (Photo 1).

These were supported by project-specific stakeholder feedback mechanisms through which stakeholders and community members could provide subsequent feedback (including a 1800 free-call telephone line and internet feedback form).

Vista Gold representatives participated in key consultation meetings, forums and briefings. This enabled the two-way exchange of information between the proponent and stakeholders, and gave Vista Gold valuable insight to stakeholder perceptions, concerns and interests.

INCREASING LEVEL OF PUBLIC IMPACT

INFORM	CONSULT	INVOLVE	COLLABORATE	EMPOWER
Public Participation Goal:	Public Participation Goal:	Public Participation Goal:	Public Participation Goal:	Public Participation Goal:
To provide the public with balanced and objective information to assist them in understanding the problems, alternatives, opportunities and/or solutions.	To obtain public feedback on analysis alternatives and/or decisions.	To work directly with the public throughout the process to ensure that public concerns and aspirations are consistently understood and considered.	To partner with the public in each aspect of the decision including the development of alternatives and the identification of the preferred solution.	To place final decision-making in the hands of the public.
Promise to the Public:	Promise to the Public:	Promise to the Public:	Promise to the Public:	Promise to the Public:
We will keep You informed.	We will keep you informed, listen to and acknowledge concerns and provide feedback on how public input influenced the decision.	We will work with you to ensure that your concerns and aspirations are directly reflected in the alternatives developed and provide feedback on how public input influenced the decision.	We will look to you for direct advice and innovation in formulating solutions and incorporate your advice and recommendations into the decisions to the maximum extent possible.	We will implement what you decide.
Example Techniques to Consider:	Example Techniques to Consider:	Example Techniques to Consider:	Example Techniques to Consider:	Example Techniques to Consider:
<ul style="list-style-type: none"> • Fact sheets; • Websites; • Open houses. 	<ul style="list-style-type: none"> • Public comment; • Focus groups; • Surveys; • Public meetings. 	<ul style="list-style-type: none"> • Workshops; • Deliberate polling. 	<ul style="list-style-type: none"> • Citizen Advisory Committees; • Consensus building; • Participatory decision-making. 	<ul style="list-style-type: none"> • Citizen juries; • Ballots; • Delegated decisions.

Figure 1 IAP2 Public Participation Spectrum

(Source: IAP2, 2007)



Photo 1 Katherine Shopping Centre Public Information Session

1.6 Stages of Consultation

Draft EIS consultation commenced in early 2011 and was phased to coincide with key Draft EIS milestones. Stage 1 has been completed, Stage 2 commenced and is ongoing, and Stages 3 and 4 will be undertaken following the release of the Draft EIS for public comment:

- ▶ Stage 1: EIS commencement including the release of the Notice of Intent (NOI);
- ▶ Stage 2: Release of the draft Guidelines for the Mt Todd Gold Project for Public Comment;
- ▶ Stage 3: Release of the Draft EIS; and
- ▶ Stage 4: Evaluation and Draft EIS finalisation.

The sequencing of consultation activities is shown in Figure 2.



	Q1 2011	Q1 2011 – Q2 2013	Q2 2013 – Q3 2013	Q3 2013 – Q4 2013
STAGE	STAGE 1	STAGE 2	STAGE 3	STAGE 4
	Commencement of Draft EIS process	Draft EIS Development	Public Exhibition of Draft EIS	Evaluation and Draft EIS Conclusion
Consultation Activities	Stakeholder identification Conduct preliminary issue/risk assessment Document review Prepare Stakeholder Consultation Plan Government Agency consultations Preliminary community and key stakeholder consultations	Community Information Sessions Distribution of project information materials (fact sheets) Project briefings and focus group meetings Manage project telephone hotline, email address and stakeholder database Respond to stakeholder comments in a timely manner Analyse stakeholder comments to inform Draft EIS investigations SIA consultation activities	Promote Public Exhibition Period including public displays and Community Information Sessions Coordinate and manage public submissions Analyse public submissions and draft responses	Close out activities Consultation evaluation
Ongoing stakeholder consultation and monitoring of feedback				
Regulatory Deliverables		Prepare Stakeholder Consultation Report and Social Impact Management Plan for Draft EIS	Prepare Community Feedback Report for Supplementary Report to the Draft EIS	

Figure 2 Draft EIS Consultation Stages and Timeframes

1.7 Integration with Other Draft EIS Technical Studies

Information relating to other Draft EIS technical studies was included in public consultation materials and activities at key stages of the process, as required. Of particular significance to the consultation approach was integration with the Social Impact Assessment (SIA), in order to:

- ▶ avoid potential duplication and consultation fatigue amongst stakeholders involved in both the broader Draft EIS consultation and social research for the SIA; and
- ▶ enable the Draft EIS consultation and SIA processes help to inform each other on the basis of information gathered from stakeholders.

The SIA involved targeted stakeholder consultation to inform the social baseline study, identification of impacts and development of appropriate management strategies. Figure 3 depicts the integration of Draft EIS and SIA consultation processes.

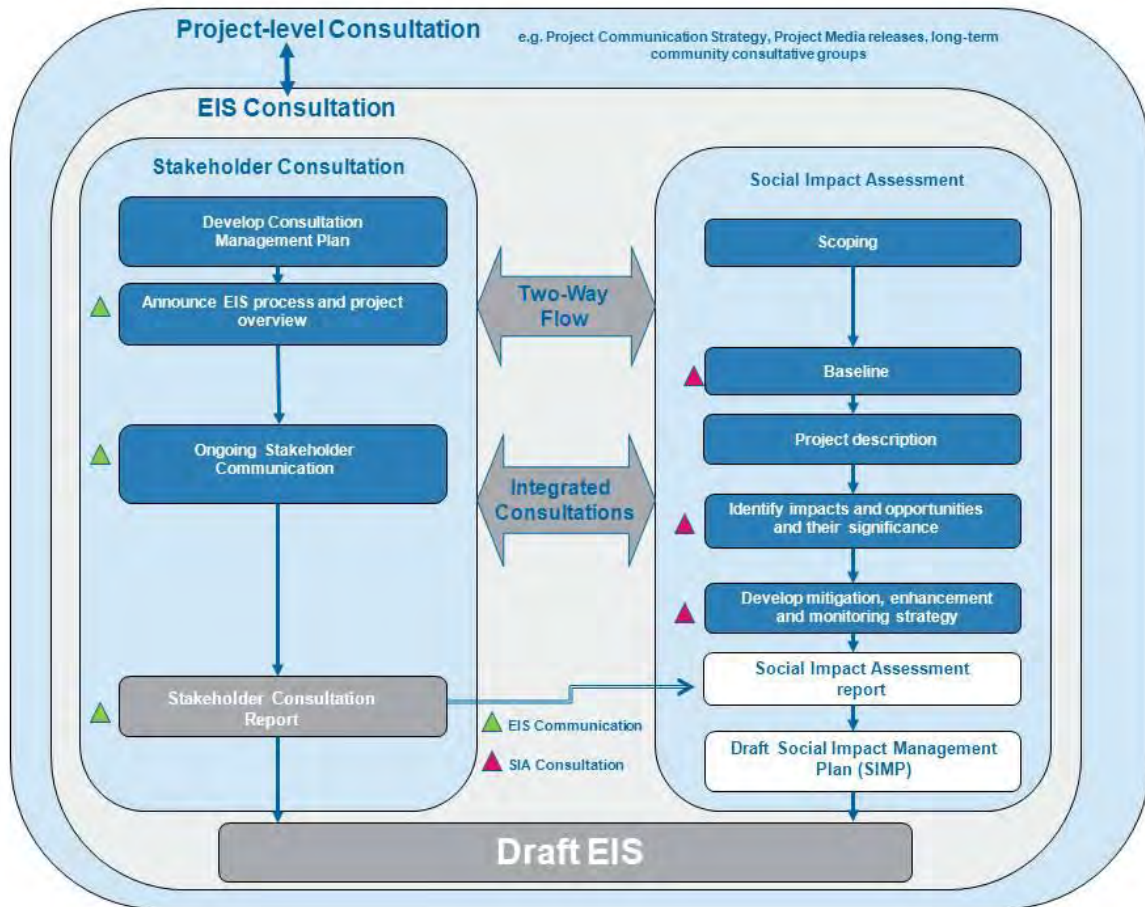


Figure 3 Links between Draft EIS and SIA Consultation

1.8 Project Stakeholders

A stakeholder is defined as “any individual, group of individuals, organisation or political entity with an interest in the outcome of a decision. They may be, or perceive that they may be, affected directly or indirectly by the outcome of a decision” (IAP2, 2007).

A preliminary stakeholder analysis was developed through desk-based research and analysis of existing information materials. This list was subject to ongoing refinement throughout the consultation process, with input from Vista Gold and other project stakeholders.

Stakeholders identified for the Project included Northern Territory Government Departments, Local Government, potentially affected landowners, local business and residents, Indigenous groups, Traditional Owners, community interest groups, industry representatives, environmental groups, media and surrounding communities.

A range of stakeholders were identified for inclusion with consultation in activities or received project-related materials during the Draft EIS process.

Key stakeholders to the Project are summarised in Table 1.



Table 1 Key Stakeholders

Stakeholder Category	Representatives
Federal Government	
Federal Government Departments	<ul style="list-style-type: none"> ▶ Sustainability, Environment, Water, Population and Communities (Department of)
Elected Representatives	<ul style="list-style-type: none"> ▶ Member of Goyder ▶ Member of Katherine
Northern Territory Government	
Government Agencies	<ul style="list-style-type: none"> ▶ Department of Mines and Energy (formerly Department of Resources) ▶ Department of Housing, Local Government and Regional Services ▶ Department of Health ▶ Department of Lands Planning and the Environment and NT Environment Protection Agency (formerly Department of Natural Resources, Environment, The Arts and Sport) ▶ Department of Business Employment ▶ Aboriginal Areas Protection Authority
Local Government	
Katherine Town Council	<ul style="list-style-type: none"> ▶ Mayor: Fay Miller and formerly Anne Shepherd ▶ CEO: David Laughher ▶ Aldermen ▶ Key Council Officers
Roper-Gulf Shire Council	<ul style="list-style-type: none"> ▶ Mayor: Tony Jack ▶ CEO: Michael Berto ▶ Aldermen ▶ Key Council Officers
Victoria-Daly Shire	<ul style="list-style-type: none"> ▶ Mayor: Major Harold Wilson ▶ CEO: Sandra Cannon ▶ Aldermen ▶ Key Council Officers
Local Communities	
Directly Affected Landholders	<ul style="list-style-type: none"> ▶ Landholders directly affected by Project
Local Residents	<ul style="list-style-type: none"> ▶ Katherine ▶ Pine Creek ▶ Indigenous communities (Werenbun, Rockhole, Binjari, Gorge Camp, Kalano, Eva Valley etc.)



Stakeholder Category	Representatives
Other Key Stakeholders	
Emergency and Health Services	<ul style="list-style-type: none"> ▶ Police Service ▶ Ambulance and Emergency Services ▶ Fire and Rescue Service ▶ Katherine Hospital & Health Service ▶ Private Health Providers
Utility Service Providers	<ul style="list-style-type: none"> ▶ Power and Water Corporation
Indigenous Groups and Traditional Owners	<ul style="list-style-type: none"> ▶ Jawoyn Association ▶ Northern Land Council ▶ Nitmiluk National Park Board of Management
Community, Business and Industry Groups	<ul style="list-style-type: none"> ▶ Katherine Chamber of Commerce ▶ Northern Territory Minerals Council ▶ Amateur Fisherman's Association of the Northern Territory ▶ Mt Todd Mine Site Rehabilitation Working Group ▶ Katherine Land Care Group
Environmental Groups	<ul style="list-style-type: none"> ▶ Environment Centre Northern Territory
Media	
Print	<ul style="list-style-type: none"> ▶ Katherine Times
TV / Radio	<ul style="list-style-type: none"> ▶ ABC Radio, Katherine Community Radio



2. Consultation to Date

Consultation was undertaken over an approximate 24 month period during the Draft EIS development phase and is continuing. This approach aimed to provide multiple opportunities for both targeted and general community consultation.

Specific consultation activities undertaken are described in Figure 4.



Figure 4 Draft EIS Consultation Activities and Communication Tools

These activities and tools are described in the following sections, and supported by consultation collateral contained in Appendices A to E.

2.1 Consultation Activities

2.1.1 Community Information Sessions

Three rounds of Community Information Sessions were held to coincide with Draft EIS preparation milestones, as follows:

- ▶ Stage 1 – Draft EIS commencement, Project Introduction and Community Views Survey (July 2011)
- ▶ Stage 2 – Draft EIS development, including an update on preliminary technical findings (September 2011)
- ▶ Stage 3 – Draft EIS finalisation and Project updates.

A summary of these events is provided in Table 2.

Table 2 Summary of Community Information Sessions

Town	Venue	Date and Time	Attendance
Stage 1 (Draft EIS Commencement, Project Introduction and Community Views Survey)			
Katherine	Katherine Show Vista Gold Project Stand (Photo 2)	Friday 15 and Saturday 16 July 2011 9:00 am – 4.00 pm	Numerous
Stage 2 (Draft EIS Development and Technical Studies Update)			
Katherine	Katherine Shopping Centre Vista Gold Project Stand (Photo 3)	Saturday 24 September 2011 1.00 pm – 3.00 pm	30 - 40
Pine Creek	Pine Creek Community Hall Community Information Session (Photo 4)	Monday 26 September 2011 6.00 pm – 8.30 pm	12
Stage 3 (Draft EIS Development and Project Update)			
Katherine	Katherine Show Vista Gold Project Stand	Friday 20 and Saturday 21 July 2012	Numerous
Katherine	Community Meeting	Saturday 27 October 2012	30 - 40



Photo 2 Katherine Show Vista Gold Stand and Community Views Survey, 15 July 2011



Photo 3 Katherine Shopping Centre Community Information, 24 September 2011



Photo 4 Community Information Session in Pine Creek, 26 September 2011

Both the Katherine Show and the Katherine Shopping Centre Community Information session adopted a 'community drop-in' format with the Pine Creek Community Information Session adopting a community 'workshop' format.

For the community drop in sessions, interested members of the community were encouraged to drop in and find out more information regarding the Project. Project posters and fact sheets were also available summarising a range of information on the Project and on Vista Gold (Appendix A). Community questions were directed to either one of the Vista Gold representatives or GHD depending on the nature of the questions. Once people had had a chance to find out information on the Project, they were then asked if they would like to participate in Community Views Survey conducted by members of the GHD Project Team. Further details on this survey are provided in Appendix B.

The Pine Creek Community Information Session adopted a different format comprising a short PowerPoint presentation on the Project, community question and answer time and then attendees were allocated into two small groups for further facilitated discussion around topics of importance to the community.

All Community Information Sessions had an 'open door' policy where interested people could enter and leave at their leisure. Participants were provided with opportunities to give feedback on the Project either verbally (with notes taken by the study team), via the Community Views Survey or via email or the free-call 1800 number.

2.1.2 Government Agency Briefings and Meetings

Over the course of the consultation program a number of government agency briefings were conducted by GHD and Vista Gold. A list of these meetings is summarised in Table 3.

2.1.3 Council Briefings and Meetings

A briefing on the Project was provided to the Katherine Town Council and Roper-Gulf Shire Council on Wednesday 13 July 2011 from 9:00-10:00 am. Representatives from the Victoria-Daly Shire Council were also invited but were unable to attend.



Table 3 Summary of NT Government Agency Briefings and Meetings

Location	Venue	Date and Time
Darwin	Department of Lands Planning and the Environment, and NT Environment Protection Authority ¹ Forum (DLPE and NT EPA)	Friday 8 July 2011 10:30 am – 11:30 am
Darwin	Department of Mines and Energy ² (DME)	Monday 11 July 2011 2:30 – 3:30 pm
Darwin	DLPE and NT EPA ¹	Monday 11 July 2011 4:00 – 5:00 pm
Darwin	Department of Health	Tuesday 12 July 2011 11:00 – 12:00 pm
Darwin	DLPE and NT EPA ¹	Thursday 19 May 2011
Darwin	NT Transport Group	Friday 8 July 2011 10:30 am – 11:30 am
Darwin	DLPE and NT EPA ¹	Thursday 19 April 2012
Darwin	DLPE and NT EPA ¹ DME ²	Monday 23 April 2012
Darwin	DLPE and NT EPA ¹ DME ²	Thursday 9 August 2012
Darwin	DLPE and NT EPA ¹	Wednesday 29 August 2012

Notes: ¹ formerly Department of Natural Resources, Environment, The Arts and Sport, ² formerly Department of Resources

2.1.4 Indigenous Consultation

Consultation with Indigenous stakeholders was undertaken at a number of levels as follows:

- ▶ Vista Gold is directly negotiating with the Jawoyn Association on matters relating to the Jawoyn shareholding interests in the Project;
- ▶ Indigenous groups and communities were invited to participate in the community information sessions undertaken for the Draft EIS through public notices and community board notices and also through the Jawoyn Association and the Northern Land Council;
- ▶ specific consultations were undertaken with Traditional Owners as part of the Cultural Heritage investigations and SIA. Refer to the Cultural Heritage and SIA Reports; and
- ▶ distribution of project information through key organisations including the Northern Land Council and Jawoyn Association.

2.2 Communication Tools

2.2.1 Project Fact Sheets

Fact sheets were prepared to provide regular information on the Project and to report on progress. These were made available at public events and as downloads from the Mt Todd website. Fact sheets to date have provided information on Vista Gold Corp, Mt Todd Mine, environment, employment and the EIS. Copies of the Mt Todd Mine and EIS (1 & 2) fact sheets are provided in Appendix A. Factsheets were released at two Draft EIS milestones as follows:



- ▶ EIS fact sheet 1 – Project commencement and Katherine Show Stand (July 2011); and
- ▶ EIS fact sheet 2 – Release of Draft EIS Guidelines and update on preliminary Draft EIS studies (September 2011).

Fact sheets were distributed through the Katherine Town Council Offices, made available at key events and advertised through the Mt Todd website.

2.2.2 Project Contact Channels – Email, Free call Telephone Line

A Project-specific email address and free call telephone information line was established and will be maintained for the duration of the Draft EIS consultation process.

These provided easy access to Project information, a means to raise issues and discuss concerns about the Project. The purpose of the Contact Channels was to enable all questions, concerns and issues to be captured, reviewed and responded to.

Contact channels for the Draft EIS consultation process were featured in all Project information materials, the Mt Todd website and in public advertisements. These were:

- ▶ Email: sharon.beattie@ghd.com
- ▶ Telephone: 1800 880 035.

The total number of enquires received via project contact channels is shown in Table 4, for the period from July 2011 to December 2012.

In addition, the Mt Todd communications team receives approximately 15 calls a month regarding the Mt Todd project. The majority of these calls are from potential suppliers or enquiries regarding employment opportunities. In the last 12 months one call has been received regarding the Gouldian Finch.

Table 4 Utilisation of Project Contact Channels

Contact Channel	Number Received
Email	4
Telephone Information Line	12

2.2.3 Editorial Coverage

Editorial coverage in local newspapers and radio was undertaken to inform the community about the Project and upcoming Draft EIS consultation activities. Publication details are shown in Table 5.

Since October 2012, regular half page community update advertisements have been published in the NT News and Katherine Times. The community updates aim to provide the general community with key information on the Project, particularly on issues being raised by stakeholders in the public domain. Table 6 provides a list of community updates published in the NT News and Katherine Times up to February 2013. Community updates are also available on the Mt Todd website. Recent community updates available on the website are shown in Table 7 and examples of community updates are provided in Appendix A.



Table 5 Summary of Editorial Coverage

Publication	Dates	Coverage
Stage 2 (Draft EIS Development) - 2011		
Northern Territory News	17 and 24 September	Northern Territory
Katherine Times	21 September	Front Page, Katherine Region
NT ABC Radio	From 17 September	Northern Territory
Katherine Community Radio	From 17 September	Katherine Region

Copies of advertisements are provided in Appendix C.

Table 6 Community update schedule

Date	Topic
3 October 2012	Water treatment plans – Batman Pit
31 October 2012	Report on community meeting
28 November 2012	Introducing the new general management
12 December 2012	Water treatment program update
19 December 2012	Fish study
16 January 2013	Water treatment – key indicators, report of water storage and pH
30 January 2013	Water treatment – report on pH level of Batman Pit
13 February 2013	Community meeting invitation

Table 7 Community updates on Mt Todd website

Date	Topic
14 November 2012	Preparing for the wet season
12 December 2012	Water treatment program
19 December 2012	Vista Gold fish study
30 January 2013	Water treatment results
27 February 2013	Katherine community meeting – presentation
10 April 2013	New site manager
24 April 2013	Major project status
8 May 2013	Water treatment success
22 May 2013	Envirotech Monitoring – Mt Todd environmental consultants

2.2.4 Website

The Mt Todd website provided a readily accessible portal for stakeholders to access information about the proponent, the Project, Draft EIS process and consultation opportunities (www.mttodd.com.au). Over



60 enquiries were received up until December 2012.

The website was periodically updated as Draft EIS preparation progressed and at various times provided details of:

- ▶ Draft EIS consultation activities; and
- ▶ Links to key documentation in a downloadable PDF format:
 - Notice of Intent via a link to the Vista Gold website;
 - project's Draft EIS Guidelines via a link to the Vista Gold website;
 - project fact sheets and community updates;
 - study Area Map;
 - Community Feedback Form; and
 - Public Notices for Community Information Sessions in the form of community information or media releases.

2.2.5 Stakeholder Database

GHD maintained records of all consultation enquiries through an Excel spreadsheet. Details including name of person, contact details, nature of query and follow-up actions were recorded.

Commencing October 2012, members of the community have been invited to register for regular updates and news regarding Mt Todd. Community members registered on the database receive copies of community updates and media releases as they are issued.

2.3 Social Impact Assessment Consultation

The following consultation activities were undertaken explicitly to inform the SIA:

2.3.1 Interviews

Twenty interviews (both by phone and in person) were conducted with representatives from the following key stakeholders to collect and validate data required to develop social baseline studies for study areas, inform impact identification and develop management strategies and monitoring programs:

- ▶ Katherine Town Council;
- ▶ Roper Gulf Shire Council;
- ▶ Victoria-Daly Shire Council;
- ▶ Amateur Fisherman's Association of Northern Territory (AFANT);
- ▶ Environment Centre Northern Territory;
- ▶ Jawoyn Association;
- ▶ NT Resources Council;
- ▶ NT Department of Health;
- ▶ Department of Mines and Energy (formerly Department of Resources);
- ▶ Katherine Hospital;
- ▶ Katherine Police;
- ▶ Katherine Schools;



- ▶ Katherine Chamber of Commerce;
- ▶ Bendigo Bank;
- ▶ Department of Defence, RAAF Base Tindal;
- ▶ Salvation Army;
- ▶ Careflight;
- ▶ Katherine Religious Organisations;
- ▶ Katherine Country Women's Association; and
- ▶ Katherine Accommodation Providers.

2.3.2 Department of Lands Planning and the Environment, and NT Environment Protection Authority Meetings

- ▶ the Project team met with representatives from Department of Lands Planning and the Environment, and NT Environment Protection Authority (formerly Department of Natural Resources, Environment, The Arts and Sport) on a number of occasions to outline proposed consultation process and identify any relevant matters for consideration through the Project.

2.3.3 Workshops for the Draft SIA Report and Draft Social Impact Management Plan (SIMP)

- ▶ four community and stakeholder workshops were conducted for input to the SIA and development of the proposed SIMP; and
- ▶ the SIA and SIMP will be released for comment as part of Draft EIS public exhibition.

Findings are summarised in the SIA Report.



3. Major Themes of the Consultation Process

During the Draft EIS consultation program, participants identified a range of potential social, environmental and economic impacts and benefits of the Project. Almost all stakeholders interviewed strongly supported the Project on the basis of economic and employment benefits for Katherine. Although feedback has differentiated between the different stakeholder groups, a number of consistent themes emerged.

Each theme is summarised below as expressed by stakeholders (in no particular order).

3.1 Housing and Accommodation

Almost all stakeholders consulted identified the current shortage in housing and accommodation in Katherine and Pine Creek and the potential for the Project to exacerbate this unless additional housing is provided for the Project workforce and projected population increase. Stakeholders cited how difficult and expensive it is to find housing currently and that this issue already impacts on key service provision. Katherine Town Council representatives highlighted the availability of land in east Katherine as providing future opportunities for new residential development but indicated that this release of land still needs to be planned and released by the Department of Lands, Planning and the Environment.

Residents of Pine Creek encouraged the Project to consider additional housing in Pine Creek area but identified that the majority of land is currently unavailable for development.

There was also considerable interest in the location and type of housing to be provided for the construction workforce. Views on two key options for this were sought from the community through the Community Views Survey:

- ▶ provision of construction workforce accommodation on the Project Site; and
- ▶ provision of construction workforce accommodation within or close to Katherine, possibly coordinated with future housing for the operational workforce.

Support for each of the above options was split for various reasons. In general there was more support for the option of locating the accommodation for the construction workforce at the Project mine site. Stakeholders who supported locating the accommodation for the construction workforce within Katherine were mostly concerned with maximising the economic benefits to Katherine. Table 8 summarises the various feedback received on these two options.

3.2 Employment and Training

Employment and training opportunities arising from the Project were of key interest to the majority of stakeholders and was also a strong message in website feedback. Key benefits perceived from the Project included:

- ▶ additional employment opportunities for both young people and people currently wanting to work within the mining industry in the Region; and
- ▶ potential for long-term career opportunities, particularly for younger people.

Stakeholders also expressed a desire for the Project to:

- ▶ focus on local employment and training opportunities and link in with local providers in establishing appropriate programs.



Table 8 Community Feedback on Accommodation Options

Option 1 – Location of Construction Workers Accommodation within or nearby to Katherine	Option 2 – Location of Construction Workers Accommodation at the Project Site
<p>Perceived benefits</p> <p>Maximise economic benefits to Katherine</p> <p>Provide opportunities for coordinating with building of housing for operational workforce</p> <p>Easy access to existing infrastructure, utilities and services</p> <p>Perceived concerns</p> <p>Potential for fatigue issues to result from additional travel between Katherine and the Project site. i.e. 12 h shifts plus additional 2 hrs travel</p> <p>Concerns regarding behaviour of workforce in town such as increased anti-social behaviours</p> <p>Potential for public nuisance concerns i.e. noise, waste, lighting etc.</p>	<p>Perceived benefits</p> <p>Will minimise any fatigue issues for workers</p> <p>Supported by Indigenous stakeholders as would assist in achieving Indigenous employment aspirations</p> <p>Can access existing infrastructure and services on site</p> <p>Will avoid any public nuisance or anti-social behaviour issues</p> <p>Perceived concerns</p> <p>Need to design workers facilities to meet worker well-being objectives including providing recreational and entertainment facilities and accommodation for partners of Indigenous workers</p>

3.3 Business and Economic Development

Stakeholders identified the following matters:

- ▶ the Project would potentially bring more people, particularly families to live in Katherine and surrounding areas;
- ▶ it would benefit local businesses through securing local contracts to supply goods and services; and
- ▶ it would increase spending within the local and regional economy.

Some concerns were also expressed that the Project would increase skill shortages in the region and draw workers away from other businesses. Businesses consulted with as part of the Chamber of Commerce Breakfast Workshop indicated a strong desire to work with Vista Gold in developing the Industry Participation Plan to maximise local and regional economic development.

3.4 Workforce

The region’s workforce and skills shortage were highlighted as a critical consideration for the Project given the timing of the Project in relation to other major projects in the Northern Territory. Other issues raised in relation to the Project workforce were as follows:

- ▶ potential anti-social behaviours of the Project workforce, particularly any FIFO or temporary workforce;
- ▶ desire for more families to locate to the area as part of the long-term operational workforce and for workers to be part of the community;
- ▶ difficulties stemming from mining rosters in terms of workers being able to participate in community events; and
- ▶ measures to limit drain from other local industries to source the Project’s workforce.



3.5 Indigenous Employment and Business Aspirations

Consultation with both Indigenous and non-Indigenous Stakeholders identified the importance of the Project for assisting in achieving Indigenous employment and business aspirations. Stakeholders also identified the following:

- ▶ the Project would provide employment and training for Indigenous people to gain long-term employment;
- ▶ the Project would provide opportunities for Indigenous businesses to supply services to the Mine; and
- ▶ an Indigenous Employment Strategy should be developed based on examples of other programs that are working in the Northern Territory.

3.6 Community Infrastructure and Service Provision

Key service providers in Katherine identified that the Project may increase existing short falls in community services and infrastructure particularly in the areas of health provision, childcare and access to health specialists such as dentists, mental health workers and physiotherapists. Other facilities such as entertainment venues, restaurants and high demand on the existing Woolworths shopping complex were also identified.

3.7 Environment

A number of concerns regarding the existing and future management of the Project and impacts on the Environment were raised by a wide range of stakeholder groups. Many of these concerns stemmed from the mine's prior owner's poor performance in terms of the environment. Key concerns raised included:

- ▶ impacts on water quality, particularly on the Fergusson and Edith Rivers;
- ▶ impacts from existing tailings dump and heap leach pad;
- ▶ loss of biodiversity;
- ▶ impacts on any sites of cultural heritage significance; and
- ▶ the risk of any future spills or contamination related to either transport of materials or flooding during a 'big wet'.

3.8 Traffic and Transport

Some concerns were raised by Stakeholders about the deteriorating condition of the Stuart Highway and the potential for the Project to exacerbate this. Other traffic concerns raised included:

- ▶ traffic increases along Edith Falls road; and
- ▶ transport of goods and supplies between the Project Site and Darwin, particularly concerns regarding the management of any potential spills.

3.9 Community

Stakeholders across all groups and interests identified the importance of establishing trust within the community, particularly given the previous historical issues associated with the mine. Stakeholders indicated wide-spread support for the project and would like to see the continuation of an open and transparent consultation process through the Draft EIS.



Table 9 summarises the major issues identified during the consultation program.

Table 9 Major Issues Identified During Draft EIS Consultation

Major Themes and Issues	COMMUNITY CONSULTATION			GOVERNMENT BRIEFINGS AND MEETINGS		
	Katherine Community Information Sessions	Pine Creek Community Information Sessions	Key Stakeholders	Local Government	NT Government	Community views survey
Workforce						
Concerns that Project will exacerbate existing skills shortfalls	✓	✓	✓	✓		
Potential for anti-social behaviours of workforce	✓		✓	✓	✓	
Difficulties stemming from typical mining rosters	✓	✓	✓	✓	✓	✓
Concerns regarding behaviour and integration of workforce	✓	✓	✓	✓	✓	✓
Concerns that local businesses will lose staff to Project	✓	✓	✓			✓
Health and well-being of workers				✓		✓
Lack of accommodation and housing	✓	✓	✓	✓	✓	✓
Need for additional housing to be built to accommodate workforce	✓	✓	✓	✓	✓	✓
Lack of land in Pine Creek		✓				
Preference for workers camp to be on or near Project Site	✓	✓	✓	✓	✓	✓
Concerns regarding Project driving up land and house prices	✓	✓	✓			✓
Opportunities for local business development	✓	✓	✓	✓	✓	✓
Concerns regarding the 'reliability' of the Project	✓	✓	✓	✓	✓	✓
Preference for Vista Gold to work with existing business in supply to the mine	✓	✓	✓	✓	✓	✓
Positive employment opportunities for local people	✓	✓	✓	✓	✓	✓
Concerns regarding regional/national labour skill shortages	✓	✓	✓			
Desire for more families to work at the mine	✓	✓	✓	✓	✓	✓
Training/ apprenticeship opportunities for local people, particularly youth (community capacity building)	✓	✓	✓	✓	✓	✓
Impact of mining rosters on community and family life	✓	✓	✓	✓	✓	
Use local training and traineeship programs and providers			✓	✓		✓
Concerns that existing health care services are stretched	✓		✓	✓	✓	



Major Themes and Issues	COMMUNITY CONSULTATION			GOVERNMENT BRIEFINGS AND MEETINGS		
	Katherine Community Information Sessions	Pine Creek Community Information Sessions	Key Stakeholders	Local Government	NT Government	Community views survey
Would like to see Project investing in local community	✓	✓	✓	✓	✓	✓
Exacerbation of existing shortfalls (retail, entertainment places, doctors etc.)	✓	✓	✓	✓	✓	
Community Health, Safety and Well-being						
Establishing trust in the community is important	✓	✓	✓	✓	✓	
Alcohol issues are a big concern			✓	✓	✓	
Need for mine workers to integrate into the community	✓	✓	✓	✓	✓	✓
Concerns regarding environmental management of tailings dump and heap leach pad			✓	✓	✓	✓
Need for environmental monitoring and reporting of monitoring to community			✓	✓	✓	
Indigenous aspirations, values and resources						
Provision for Indigenous Employment Opportunities	✓	✓	✓	✓	✓	✓
Need for cultural awareness training on Project workforce	✓		✓			
Use of Indigenous mentors		✓	✓			
Traffic and Transport						
Condition of the Stuart Highway		✓	✓	✓	✓	
Increase in traffic on Edith falls road		✓	✓	✓	✓	
Transport of dangerous goods between Project and Darwin			✓		✓	
Environmental risks from transport such as spills etc.	✓	✓	✓	✓	✓	
Post-mining						
Loss of employment and economic stimulus			✓			✓



4. Results of Consultation

This section presents the findings of specific public consultation activities conducted between April 2011 and December 2012. This process is ongoing with further consultation to occur as part of the Draft EIS public release phase.

4.1 Community Information Sessions

Six Community Information Sessions were held in the Katherine Region as follows:

- ▶ July 15 and 16 2011 – Katherine Show Vista Gold Stand;
- ▶ Saturday 24 September 2011 – Katherine Shopping Centre;
- ▶ Monday 26 September 2011 – Pine Creek Community Hall;
- ▶ July 20 and 21 2012 - Katherine Show Vista Gold Stand;
- ▶ Saturday 27 October 2012 – Katherine Community Meeting; and
- ▶ Saturday 16 February 2013 – Katherine Community Meeting.

Approximately 30-40 people visited each of the Katherine Shows and Katherine community events and 12 people attended the Pine Creek Community Hall Event. Both the Katherine Show Information Stand and the Katherine Shopping Centre Event were run as ‘community drop-in’ style events. The Pine Creek Community Information Session was run as a community workshop.

People attending each of these events represented a wide cross-section of the community including residents, visitors, miners, teachers and members of the business community etc.

Overall attendees were very supportive of the Project citing the positive benefits for local employment and the Katherine economy as the main reasons for this support.

The October 2012 Community Meeting provided an opportunity for Vista Gold to provide an update on the Project with particular emphasis on water treatment.

Key issues are summarised in Table 10 to Table 12.

Table 10 Key Issues Raised at Katherine Show Information Stands

Theme	Issues Raised
Local Employment and Economic Benefits	<ul style="list-style-type: none"> ▶ Support for the Project due to the local benefits such as employment and economic growth for the Region
Housing and Accommodation	<ul style="list-style-type: none"> ▶ Concerns that there is no housing available in Katherine
Workforce	<ul style="list-style-type: none"> ▶ One person raised a concern about anti-social behaviour of workers ▶ Concerns raised about a FIFO workforce (if used) and their ability to integrate into Katherine Community
Employment and Training	<ul style="list-style-type: none"> ▶ The majority of people saw the Project as a positive opportunity for increased employment and training opportunities for Katherine ▶ Others noted that existing businesses in Katherine have difficulties in finding staff
Indigenous Employment	<ul style="list-style-type: none"> ▶ Need to provide Indigenous employment opportunities but recognition that this can be challenging as need to be undertaken in culturally appropriate way



Theme	Issues Raised
Community Infrastructure and Service Provision	<ul style="list-style-type: none"> Concerns that existing health systems are stretched and additional workforce and families will place pressure on these services
Workers camps	<ul style="list-style-type: none"> Views were divided regarding whether workers camps should be located in or nearby to Katherine or on the Project Site Main reasons people preferred the Project Site was to minimise any potential for anti-social behavioural issues and due to concerns regarding worker fatigue associated with having to drive after a shift The main reason people preferred a location closer to Katherine was so that to maximise economic benefits for Katherine
Environmental	<ul style="list-style-type: none"> Concerns were raised regarding the negative environmental history of the site and the poor environmental management of previous owners Concerns regarding downstream water quality and any potential for impact on the Edith River Land rehabilitation needs to be done properly
Business Community	<ul style="list-style-type: none"> Concerns regarding the behaviour of the previous owner in not paying debts within the Katherine business community Need to have good financial management in place
Instability of Gold Prices	<ul style="list-style-type: none"> Some concerns were raised about the instability of Gold Prices and the potential for the Project to close down if gold prices go down
Traffic and Transport	<ul style="list-style-type: none"> Stuart Highway is deteriorating and there were concerns the Project may contribute to this
Community	<ul style="list-style-type: none"> Would like to see the company investing in the Community through sporting sponsorships etc.

Table 11 Key Issues Raised at Katherine Shopping Centre Community Drop In

Theme	Issues Raised
Local Benefits	<ul style="list-style-type: none"> Support for the Project citing the local benefits such as employment and economic growth for the Region
Indigenous employment	<ul style="list-style-type: none"> Need to have a good Indigenous employment and training strategy in place
Employment and training	<ul style="list-style-type: none"> Support for the project in terms of the employment and training opportunities for the Katherine Region

Table 12 Key Issues Raised at Pine Creek Community Information Centre

Theme	Issues Raised
Local Employment and Economic Development	<ul style="list-style-type: none"> Support for the Project citing local benefits such as employment and economic growth for the Region
Employment	<ul style="list-style-type: none"> Seen as positive for employment opportunities in the region but also some concerns regarding loss of existing workers to the Project (cross-over employment impacts)



Theme	Issues Raised
Community	<ul style="list-style-type: none"> Existing miners living in the area (particularly FIFO) not acting as part of the community Mt Todd needs to be part of the community Would like to see more families in the area Mining rosters impacting on workers being able to contribute to community through participation in community events
Housing and Accommodation	<ul style="list-style-type: none"> No land or housing currently available in Pine Creek Community would really like to see some new housing in the Pine Creek community but land is currently subject to Native Title or not available for sale Workers for Stuart Highway upgrades have had to be housed in 'Donga' style accommodation on the highway as there hasn't been any availability in Pine Creek Some people were saying that land speculation was already starting to occur with the possibility of the Project opening driving up land prices Concerns that the Project may drive up land and accommodation prices and force existing residents out of the area
Tourism	<ul style="list-style-type: none"> Tourists are more and more wanting to see the 'mine' emerging industry-led tourism There is a perception among tourists though that there is no accommodation
Traffic and Transport	<ul style="list-style-type: none"> Traffic and transport on Edith Falls Road likely to be an issue. This road is also used by the Werenbun community and to get to the Edith Fall National Park area
Indigenous employment and training	<ul style="list-style-type: none"> Need to look at existing programs that are working such as the Borroloola program Consider using Indigenous mentors There are real challenges around Indigenous employment

4.2 Meetings with Local Government

GHD and Vista Gold met with representatives from Katherine Town Council, Roper-Gulf Shire Council and Victoria-Daly Shire Council on a number of occasions including a dedicated meeting on 13 July 2011. Other meetings included discussions as part of the Mt Todd Rehabilitation Working Group Meeting on Thursday 22 September 2011 and during the Pine Creek Community Information Session on 26 September, 2011. Key issues raised are provided in Table 13.

Table 13 Key Issues Raised at Meetings with Local Government

Theme	Issues Raised
Housing and Accommodation	<ul style="list-style-type: none"> Katherine Town Council identified that there was a current shortage of housing in Katherine There is land identified for future development in Katherine east but this land has not yet gone through the planning approval processes led by the Department of Lands and Planning Options for accommodation for both the construction and operational workforce were discussed. Council supported new residential housing within Katherine for the operational workforce and also recognised the necessity of a workers camp for the construction workforce
Rehabilitation of the Site	<ul style="list-style-type: none"> KTC raised concerns about how the site would be rehabilitated after the mine closed



Theme	Issues Raised
Environment	<ul style="list-style-type: none"> Concerns regarding the environmental management of the site
History of the Project	<ul style="list-style-type: none"> It was noted that the Mine had a negative history in the community and that a lot of people were affected when the mine closed down previously
Workforce	<ul style="list-style-type: none"> Some concern was raised about the potential negative behaviour of the workforce and the need to manage this appropriately
Social Infrastructure	<ul style="list-style-type: none"> Katherine has good base sport and recreational facilities Existing venues for socialising and entertainment are currently at capacity. More facilities would be required to support additional population growth associated with the Project There is not currently enough doctors and dentists Existing retail opportunities are limited as there is only one supermarket
Workers camps	<ul style="list-style-type: none"> Workers camp should be designed with the well-being of workers in mind. There are some good examples around that are more village-style and also provide in-house socialising and entertainment facilities
Existing Infrastructure	<ul style="list-style-type: none"> The Katherine Town Sewage Treatment Plant has good capacity
Education and Training Providers	<ul style="list-style-type: none"> There are a number of education and training providers in Katherine including a campus of the Charles Darwin University
Tourists and Visitors to the Area	<ul style="list-style-type: none"> There is an influx of tourists and visitors to the area during the tourist season, at these times town services are often under pressure The town has approximately 250,000 visitors during the dry season
Community	<ul style="list-style-type: none"> Katherine is quite 'cosmopolitan' and 'resilient' There is a good mix in town of people from different backgrounds and cultures including the Philippine's, Sudan, Africa, etc. A lot of the more long-term residents of Katherine have moved out to the outer areas rather than living in the Town itself

4.3 NT Government Briefings

Members of the Project Team met with DLPE and NT EPA (formerly NRETAS), DME (formerly DoR), Department of Health, Department of Local Government (formerly Department of Local Government and Regional Services). Key issues raised are summarised in Table 14.

Table 14 Key Issues Raised at NT Government Briefings

Theme	Issues Raised
Draft EIS Scope	<ul style="list-style-type: none"> Clarification was sought regarding the scope of the SIA and key stakeholders to be involved in the process Matters to be considered in the SIA should include the adjacent Nitmiluk National Park, involvement of the Jawoyn Association and traffic and transport impacts
Project Study Area	<ul style="list-style-type: none"> The study area for the SIA should also consider the wider area of influence as including Darwin, given the NT government's role in the Project previously and the negative view of the Project by people in Darwin
Community Consultation	<ul style="list-style-type: none"> Clarification was sought on how the views of the community would be addressed through the Draft EIS process



Theme	Issues Raised
Health services	<ul style="list-style-type: none"> ▶ Katherine Hospital should also be consulted as well as the Health Gains Unit within Department of Health ▶ Concern that the Hospital would “burst at seams” with additional load from Project workforce and families
Health	<ul style="list-style-type: none"> ▶ The Department of Health would be interested in any issues impacting on potable water quality
History of Project	<ul style="list-style-type: none"> ▶ Many people within the Katherine community may have a negative view of the Project due to the negative history of the Project and that people were ‘hurt’ when the mine closed down previously
Workers Camps	<ul style="list-style-type: none"> ▶ Pine Creek is already pretty busy with existing workers camps for the Crocodile Gold Project ▶ Take note of Environmental Health Fact Sheet No. 700 – Requirements for Mining, Construction and Bush Camps
Housing and Accommodation	<ul style="list-style-type: none"> ▶ Housing and accommodation in Katherine is likely to be very limited. Some capacity might exist with some of the larger motels
Community	<ul style="list-style-type: none"> ▶ Katherine has a mixed community consisting of residents, indigenous groups, RAAF personnel, visitors and tourists ▶ Community relations should be open and transparent as people have long memories and there will be concerns about the history of the project
Social and Community Infrastructure	<ul style="list-style-type: none"> ▶ Katherine has good base infrastructure that will support the locating of new accommodation in Katherine
Indigenous Employment and Business Opportunities	<ul style="list-style-type: none"> ▶ There should be opportunities for the Jawoyn people to develop business and employment for Indigenous people
Environment	<ul style="list-style-type: none"> ▶ Important that at least the existing level of environmental management of the Mine site is maintained ▶ Environmental legislation was changing to allowing community environmental reporting for Projects ▶ Key environmental considerations include treatment of waste and how it will be managed, water treatment and management, energy efficiency management
Traffic and Transport	<ul style="list-style-type: none"> ▶ Issue of traffic and transport of cyanide between the Project Site and Darwin needed to be considered in the Draft EIS
Key Government Strategies and Policies	<ul style="list-style-type: none"> ▶ The Project should consider the following key Government Strategies and Policies: <ul style="list-style-type: none"> – Territory 2030 – Territory Growth Towns – Various health and law and order strategies

4.4 Key Stakeholder Meetings

A number of key stakeholder meetings were held during the Draft EIS development phase including workshops with the Jawoyn Association and the Katherine Chamber of Commerce, meetings with key service providers such as the Katherine Hospital and Katherine Police and interviews with interested members of the community including within some of the nearby Indigenous communities. Key issues raised are summarised in Table 15.



Table 15 Key Issues Raised at Key Stakeholder Meetings

Theme	Issues Raised
General support for the project	<ul style="list-style-type: none"> ▶ Most people interviewed thought the Project would be good for jobs and economic development for Katherine ▶ A number of stakeholders identified that operation of the mine was the best opportunity for future rehabilitation of the site ▶ Businesses in the Region would like to see the Project go ahead
Employment	<ul style="list-style-type: none"> ▶ Concerns that workforce requirements for the Project will exacerbate skills deficits for service providers in town ▶ Concerns that the Project will take workers from existing businesses ▶ Would like to see the project employ companies locally and have a training program in place to train locals ▶ Many local people working at other mines in the Region will want to come back and work at Mt Todd ▶ The Project will be competing with other projects in the Northern Territory such as INPEX for construction workers
Health Provision	<ul style="list-style-type: none"> ▶ Existing shortfalls in health services in Katherine include GP availability and some resulting in greater than necessary workload for the Katherine Hospital ▶ There are a number of health centres primarily services the Indigenous communities, these operate under separate health boards ▶ The Katherine Hospital is not a specialist hospital, patients need to go to Darwin for specialist care and major trauma incidents
Social Issues	<ul style="list-style-type: none"> ▶ Often there is an increased need for mental health services during construction and increased instances of sexually transmitted disease
Accommodation and Housing	<ul style="list-style-type: none"> ▶ The majority of stakeholders raised that there is an existing housing shortage in Katherine ▶ Would like to see the construction of new housing in Katherine to support the operational workforce ▶ Would like to see families encouraged to work at the mine and for this to be facilitated through the accommodation strategy
Environment	<ul style="list-style-type: none"> ▶ Indigenous owners including neighbouring groups need to be consulted during the project ▶ Concerns regarding the environmental management of the mine including how water quality will be managed, flood risk, greenhouse gas emission, environmental offsets, biodiversity offsets, etc. ▶ Concerns from some Indigenous people about the impact of the Mine on water quality ▶ Need to factor in issues associated with the wet season and the potential for climatic variability and increased future flood risks ▶ Concerns about the location of the Project being close to the Edith and Fergusson Rivers ▶ Concerns were raised about habitat for the Gouldian finch ▶ Concerns raised about tailings dump and heap leach pad ▶ Need to consider the design of the mine to allow for the 'big wets' ▶ Some concerns about the water quality of 'Batman' Pit ▶ Draft EIS will need to address environmental monitoring including of fish stocks of nearby rivers. These results should be publically reported.



Theme	Issues Raised
Community	<ul style="list-style-type: none"> ▶ Community consultation during the wet season is difficult ▶ Need to have an ongoing community consultation program so that people know where they can have a say and get feedback about the project ▶ Establishing trust in the community is important ▶ Concerns that the mine might be sold off to another company
Traffic and Transport	<ul style="list-style-type: none"> ▶ Environmental and safety risks from any transportation of dangerous goods need to be addressed ▶ Buses and transport should be provided for mine workers to Katherine at regular times such as on pay nights ▶ Need to consider safe use of Edith road as this area is a high use area during tourist seasons ▶ Transport to Katherine and the mine site needs to be considered. Possibility for the Project to look at subsidising flights. Katherine used to have a commercial airport.
Cumulative Impacts	<ul style="list-style-type: none"> ▶ Cumulative impacts need to be considered in the Draft EIS
Workforce Behaviours	<ul style="list-style-type: none"> ▶ Some concerns were raised about the negative perceptions of the mine workforce behaviour and increased incidence of anti-social behaviours (drugs, alcohol, assault etc.)
Social Impact Management Plan	<ul style="list-style-type: none"> ▶ The project should have a Social Impact Management Plan in place
Indigenous Employment and Business Aspirations	<ul style="list-style-type: none"> ▶ Employment of Indigenous people should be given priority ▶ A wider view of employment and business opportunities should be taken. Indigenous people would like to see jobs in construction, security, building accommodation, administration etc. ▶ Concern that there needs to be appropriate cultural awareness measures in place ▶ Would like to see employment and training programs for Indigenous people both Jawoyn and non Jawoyn people ▶ Would like to see Indigenous mentors from the same tribe to support and guide younger workers ▶ Traineeships are very important ▶ Accommodation for Indigenous workforce needs consideration. It would be good for them to be located close to the Mine Site ▶ Need for cultural awareness training for all mine workers
Education and Training	<ul style="list-style-type: none"> ▶ There are a number of education and training programs locally that should be utilised for the Project ▶ The Charles Darwin University are already working with Rio Tinto
Workers Camps	<ul style="list-style-type: none"> ▶ Would like to see the construction workers camp located at the mine site or close to the mine site
Failure of previous mining companies	<ul style="list-style-type: none"> ▶ Many stakeholders sought clarification as to why previous mining operations had failed at the Project Site



Theme	Issues Raised
Cultural Heritage	<ul style="list-style-type: none"> ▶ Need to make sure cultural heritage is properly addressed in consultation with the Traditional Owners ▶ Traditional Owners used to use all of the land where the mine is today for a range of activities ▶ Would like to see some access continued for traditional activities
Crime, law and order	<ul style="list-style-type: none"> ▶ No major concerns from a policing perspective associated with the additional workforce. Police indicated they are used to responding to more people associated with key events in the Katherine ▶ Some concerns that the higher wages paid to mining workers may result in more alcohol abuse and anti-social behaviours in Katherine ▶ Alcohol issues are a big concern ▶ Some concerns raised about workers from 'out of town' coming to work at the mine and this may cause some conflicts and 'turf' issues
Tourism	<ul style="list-style-type: none"> ▶ Tourist perceptions of the mine might need to be considered
Business community	<ul style="list-style-type: none"> ▶ Would like to see Vista Gold take responsibility for building the construction camp for the Project. This will demonstrate commitment to the Project ▶ Some concerns were expressed about the reliability of the Project given the history of the mine site ▶ Would like to see more 'round table' dialogue with the Project Executives

4.5 Meeting of the Mt Todd Rehabilitation Reference Group

The Mt Todd Gold Mine Rehabilitation Reference Group is a group convened by the former Department of Resources to provide stakeholder input into ongoing mine site rehabilitation. This group has been meeting for a number of years and pre-dates Vista Gold's involvement at Mt Todd. A workshop was held with members of this group and other key stakeholders on the 16 September 2011 as part of the SIA. The results of this workshop are summarised in the SIA Report. Follow up meetings were held during 2012 (24 January, 15 May and 26 October) with the Group to provide project updates, present the results of some of the technical studies, discuss outcomes from the 2011 Boxing Day flood and provide update on the progress of water treatment. Vista Gold continues to engage in the forum.

4.6 Community Views Survey

A Community Views Survey was conducted during both the Katherine Show (July 15 and 16, 2011) and the Katherine Shopping Centre Community Drop-In Event. The purpose of the survey was to collect information on community views about the proposed Mt Todd Gold Project, which included the proposed re-opening of the Mt Todd Mine and accommodation components.

4.6.1 Method

The survey was conducted using a semi-structured interview approach where members of the GHD project team asked interested persons if they would like to participate in the survey. Respondents were first given the opportunity to be informed regarding the Project and to ask any questions of clarification from Vista Gold Project representatives.

Information was collected on an anonymous basis with no personal details recorded. During the survey, notes were also recorded on any other suggestions or comments made by participants.



4.6.2 Respondents

In total 60 surveys were completed collecting information from a broad range of respondents, including 46 respondents who were Katherine residents, one a resident of a neighbouring community (within 30km of Katherine), 7 Northern Territory residents, 3 inter-state visitors and 3 tourists.

Forty of the respondents had previously heard of the project, mostly through word-of-mouth.

4.6.3 Level of Support for the Project

Of the 60 surveys that were undertaken, 54 respondents supported the Project and 5 indicated that they were neutral.

Over half of the respondents (40) were 'strongly supportive' of the project, 11 were 'supportive' and 7 were 'neutral'. None of the respondents indicated that they were not supportive of the Project.

4.6.4 Perceived Benefits of the Project

Almost all respondents identified employment and economic benefits as the main positive benefits of the project, noting that the project will stimulate employment and economic growth. Most of these respondents noted specifically that local employment and economic benefits were the most important.

Other benefits identified included tourism benefits, training for locals, Indigenous employment and training, more families coming to live in the area, more people able to contribute to community life, benefits for the Northern Territory in terms of economic returns and drawing in additional professional expertise to the Town.

4.6.5 Perceived Negative Impacts of the Project

Respondents were asked what they thought would be the potential negative impacts of the Project. Potential impacts identified were:

- ▶ leaving a 'hole' in the community if the Project closes down prematurely;
- ▶ lack of housing in Katherine and surrounding areas;
- ▶ mine workers potentially not being integrated into the community;
- ▶ environmental impacts if the rehabilitation work isn't done well;
- ▶ further deterioration of the Stuart highway;
- ▶ negative impacts if a FIFO workforce is used;
- ▶ increased traffic flow and management;
- ▶ need for comfortable accommodation for the workforce or will have impacts on workers;
- ▶ increase in rental and house prices;
- ▶ increase in homelessness in town;
- ▶ water quality impacts particularly on the quality of the nearby rivers;
- ▶ concerns about cyanide and environmental impacts; and
- ▶ concerns that the accommodation situation in Katherine could become like Port Hedland.



4.6.6 Important Issues

Participants were asked to identify the issues that were most important to them. Issues that were most important to people were clearly local employment opportunities (35 respondents) and local and regional business opportunities (34 respondents). Other issues identified were:

- ▶ protecting water quality, particularly the water quality of Edith River and Edith Falls;
- ▶ keeping younger people in town;
- ▶ traffic and traffic safety;
- ▶ loss of Gouldian finch habitat;
- ▶ cultural heritage;
- ▶ rehabilitation of mine;
- ▶ importance of the mine being there for the long term;
- ▶ reconciliation with Indigenous people through employment and training; and
- ▶ management of worker fatigue.

4.6.7 Worker Accommodation

Respondents were asked regarding their preferences for housing and accommodation for both the construction and operational workforce. Results were as follows:

- ▶ for the construction workforce:
 - 18 respondents preferred workers to be accommodated on the Project site, mainly citing worker fatigue and convenience for workers as the reasons; and
 - 13 respondents preferred the workers camp to be located in or nearby to Katherine, citing maximising the economic benefits for Katherine as the reasons.
- ▶ for the operational workforce:
 - 28 respondents indicated their preference for new residential housing to be built in Katherine to support the workforce; and
 - other respondents, were not sure or were concerned that there wasn't much land or housing currently available.
- ▶ the following comments were also made:
 - people should live in town and bus out to the site;
 - prefer to see housing in Katherine but the price of housing and accommodation is an issue;
 - concerns raised about the possibility of FIFO, citing concerns about social cohesion and alcohol etc;
 - workers and their families will also need access to local services such as hospital, schools etc; and
 - need to provide a mix of housing to provide flexibility for the workforce, some single person's quarters and some housing for families etc.

4.6.8 Community Benefits

Lastly, the participants were asked to identify any ideas they had for how the project could perform to benefit the community. The following comments were made:



- ▶ sponsorship of community events;
- ▶ take locals on a tour to see the mine and how it works;
- ▶ support local landcare and waterwatch groups;
- ▶ try to attract families to the area;
- ▶ support sporting organisations;
- ▶ live locally and be part of the community;
- ▶ local employment;
- ▶ support for local businesses;
- ▶ long-term scholarships;
- ▶ support country music festival;
- ▶ stop workforce cross-over, be sensitive to existing businesses;
- ▶ new training for 'green' workers;
- ▶ supply housing in town;
- ▶ invest money in the National Park through fire management, carbon abatement etc.;
- ▶ provide an mine education facility at the Project site where school groups can visit; and
- ▶ have regular reporting to the community as the last owners didn't tell the community about the issues that were there.



5. Future Consultation with Stakeholders

Following acceptance by the Northern Territory Government of the Draft EIS, the document will be placed on public exhibition for a minimum of six weeks. As part of the public exhibition period the following will occur:

- ▶ public notices will be placed in local newspapers to provide details about:
 - timing of the public exhibition period;
 - locations where people can view the document, including static and staffed display points together with web-based information; and
 - how to make public submissions on the Draft EIS.
- ▶ information about the public exhibition period and submission requirements on the Mt Todd Website;
- ▶ a final Project Newsletter will be prepared to publicise release of the Draft EIS, provide information on the public exhibition process and call for submissions;
- ▶ key stakeholders recorded on the Project's database will be notified about the Draft EIS and review period; and
- ▶ agency briefings and community information sessions held to present findings of the Draft EIS.

5.1 Post Draft EIS Public Exhibition Period

Following completion of the public exhibition period, all stakeholder and community feedback will be reviewed by NT EPA. A Supplement to the Draft EIS will be prepared if required.

A decision by the Northern Territory Government about a future development of the Project will be made public through the NT EPA and the Mt Todd Websites. It is envisaged that Vista Gold will provide future updates about the progress and status of the Project through its website.

5.2 Ongoing Consultation Activities

Plans for longer term consultation as part of the Project's construction and operational phases will be included in the Environmental Management Plan and Social Impact Management Plan.

Consultation will continue throughout the life of the Project to ensure due consideration of all project-related opportunities and concerns. This program will involve:

- ▶ maintaining the current good relationships between Vista Gold, landholders, Traditional Owners and government (at all levels);
- ▶ establishing contact with other key stakeholders as new issues arise;
- ▶ disseminating information to, and having discussions with, stakeholders on key issues raised during the Draft EIS assessment;
- ▶ identifying and responding to key issues and concerns of all stakeholders;
- ▶ preparing relevant documents for review by government agencies and other stakeholders;
- ▶ addressing specific concerns of various stakeholders on an ongoing basis;
- ▶ maintain project website, including reporting on water quality and discharges;
- ▶ regular community meetings; and
- ▶ proactive media program.



6. References

EPA (formerly NRETAS), 2011, *Guidelines for the Preparation of an Environmental Impact Statement: Mt Todd Gold Project, Katherine Region, NT (September 2011)*, Northern Territory Government

GHD, 2011, *Mt Todd Gold Project Notice of Intent*, Prepared for Vista Gold Australia Pty Ltd, April 2011.

International Association for Public Participation (IAP2), 2007, *Core Values for Public Participation Processes*, Accessed at <http://www.iap2.org>



Appendix A
Project Fact Sheets and Community
Updates



Mt Todd Mine, Northern Territory



The Mt Todd project site is located approximately 50km north of Katherine and 250 kms south of Darwin. It covers a mine tenement of 160,878ha, which includes both the Batman and Quigleys gold deposits.

Currently not in production, the site was acquired by Vista Gold and its wholly owned subsidiary Vista Gold Australia in 2006.

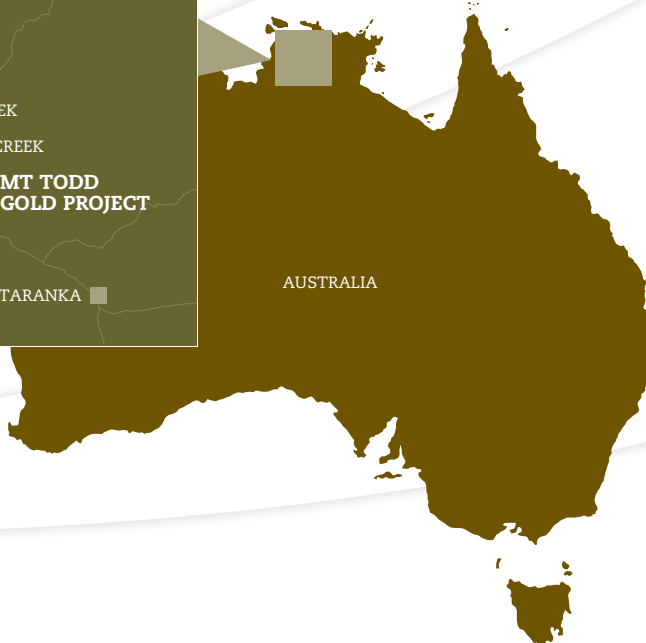
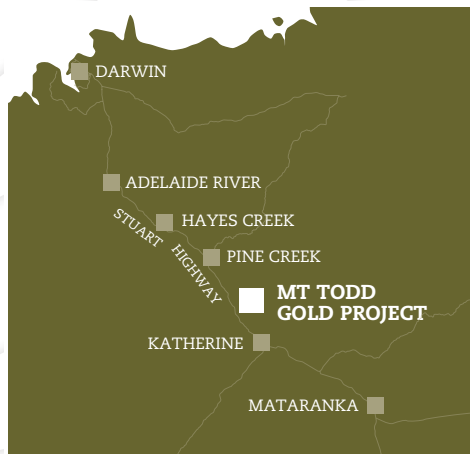
On January 1, 2007, Vista Gold Australia was entrusted with care and maintenance of the site and accepted the obligations to maintain the assets of the NT Government on the site, and in conjunction with the NT Government, to manage Mt Todd in an environmentally sound manner.

As a "brownfield development" the Mt Todd Gold Mine has significant existing infrastructure including paved access from the major transportation corridor, a natural gas pipeline to the site and medium-tension power lines, and a fresh water reservoir.

Vista Gold Australia has installed a water treatment plant as part of its water management plan and ongoing environmental stewardship for the Mt Todd site.

Vista Gold is encouraged by the potential of the Mt Todd project and is advancing plans to redevelop Mt Todd as a producing gold mine. Current plans contemplate an open pit mine with conventional open pit mining methods. Ore would be processed on site to recover the contained precious metals prior to disposal of the tailings in one of two tailings impoundment facilities. The development plans also consider the closure and reclamation of some of the existing facilities in the early years of the project.

Recent assessments of the gold resources at Mt Todd have estimated reserves at the Batman deposit to be in the order of 4.1 million ounces of gold. Work to date has been encouraging and Vista Gold has recently announced that it believes that the project can now support a 40-45,000 tonne per day process facility. A definitive feasibility study at this throughput rate is expected in late 2012 or early 2013.



History of the site

The Batman deposit is part of a goldfield that was worked from early in the twentieth century. Gold and tin were discovered in the Mt Todd area in 1889 and most deposits were worked in the period from 1902 to 1914.

In the 1950s the area was explored for uranium without any economic success and mining leases were granted in 1975 for exploration for a variety of commodities.

From the late 1980s the mine was operated by a number of companies with varying degrees of success with the most recent operator closing due to bankruptcy. The causes of the failure of the previous operation include: low gold prices, higher than expected operating costs, lower than expected metallurgical recoveries and lower than expected processing rates. Vista Gold has dedicated much of its effort in the last 5 years to gaining a better understanding of the deposit and mineralisation in the Batman deposit and evaluating metallurgical processing alternatives. The company believes it has adequately addressed all of the technical issues that caused problems for the previous operators.

Future development of the site

Vista Gold understands the legacy of the site and is committed to not making the same mistakes. Over the past five years, Vista Gold has taken an orderly, methodical and conservative approach to determine if the property can be re-opened.

Only after the project demonstrates an acceptable rate of return with proven and readily available technology will the decision be made to re-open the mine.

Recent improvements in gold prices, in mining equipment and processing techniques, has allowed Vista Gold to initiate a series of studies aimed at gaining regulatory approvals to redevelop the mine and reach a final investment decision point.

In November 2010, the Northern Territory Government renewed its agreement with Vista Gold for the care and maintenance of the mine for a further five years, demonstrating both the Government's and Vista Gold's commitment to developing the site.

Vista Gold has also entered into a separate agreement with the Jawoyn traditional owners of the site to ensure an appropriate use and protection of the Jawoyn freehold.

Vista Gold is in the process of completing an environmental impact study of Mt Todd. In the event that Vista Gold does commence mining at Mt Todd, it will assume full responsibility for the existing and any future rehabilitation.

Construction on the site is likely to take from one to two years, suggesting the first gold could be poured in mid 2015.

The Mt Todd project will create employment and economic growth opportunities for the local region of Katherine, with an estimated work force of 200 – 270 employees

Timeline

2006	Site acquired by Vista Gold
2007	Vista Gold is entrusted with care and maintenance of the site
2010	NT Government renews agreement with Vista Gold for the continued care and maintenance of the mine site
2011	Vista Gold release pre-feasibility study indicating estimated reserves at the site of 4.1 million ounces of gold
3rd Quarter 2012	Complete new resource estimate
4th Quarter 2012 to 1st Quarter 2013	Complete feasibility study, with new resource and larger process facility
1st Quarter 2013	Receive final EIS approval

in operations, maintenance, engineering and geology to be based in the region.





MT TODD

Environmental Impact Statement



About this Study

In 2006 Vista Gold acquired mining and exploration leases for the Mt Todd Gold Mine located approximately 50 km north-west of Katherine and 250 km south of Darwin in the Northern Territory, Australia. The Mt Todd mine site contains several mineral leases covering approximately 5,365 ha.

Vista Gold has engaged an independent consultant, GHD Pty Ltd, to undertake an Environmental Impact Statement (EIS) to identify potential environmental, social, transport,

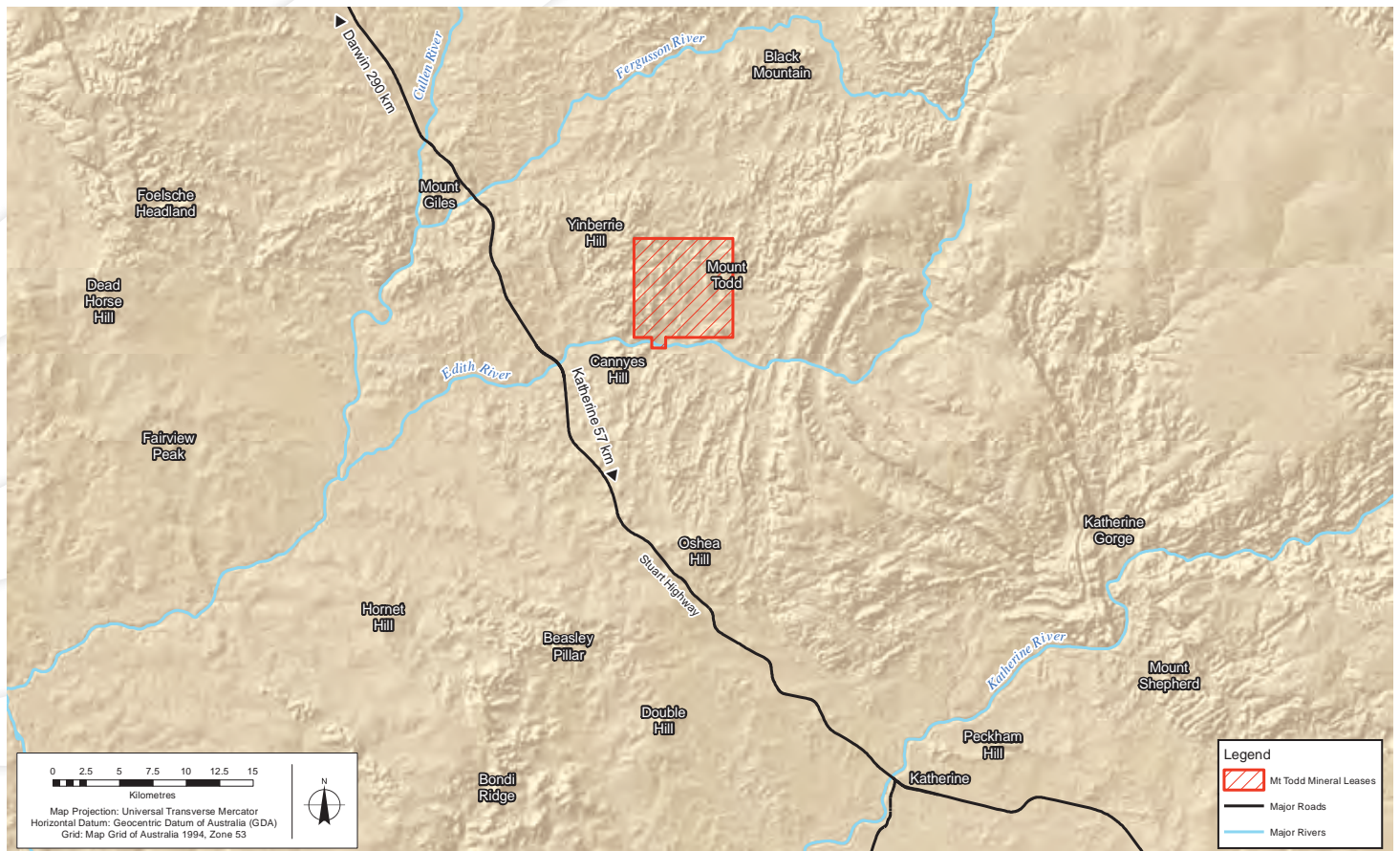
accommodation, cultural and economic impacts associated with reopening and operating the Mt Todd Gold Mine.

The Environmental Impact Statement – what’s involved?

The NT Department of Natural Resources Environment the Arts and Sport (NRETAS) has determined the Mt Todd Gold Project will be assessed under the NT *Environmental Assessment Act 1982* with a subsequent Environmental Impact Statement (EIS) required.



Locality Map



© 2011. Whilst every care has been taken to prepare this map, GHD, NRETAS, ESRI and Geoscience Australia make no representations or warranties about its accuracy, reliability, completeness or suitability for any particular purpose and cannot accept liability and responsibility of any kind (whether in contract, tort or otherwise) for any expenses, losses, damages and/or costs (including indirect or consequential damage) which are or may be incurred by any party as a result of the map being inaccurate, incomplete or unsuitable in any way and for any reason.

The Federal Department of Sustainability, Environment, Water, Population and Communities (SEWPAC) has declared the Project to be a “controlled action” requiring assessment under the *Environment Protection and Biodiversity Conservation Act 1999* (Cth). A number of other legislative acts are also relevant to the Project and will be considered as part of the EIS. One EIS will be prepared for the Project and assessed by both the Northern Territory and Federal Governments.

An EIS describes the potential positive and negative impacts of the proposed activities of the Project. These impacts need to be considered in relation to:

- The natural and physical environment – land, water, air, infrastructure, services, ecology, environmental values at the site and the surrounding areas
- The social and cultural environment including people, places, social networks, community services, heritage, cultures and way of life
- The economic environment

The EIS will recommend ways to reduce or remove potential negative impacts and enhance potential positive impacts from the Project.

EIS Consultation

Consultation with stakeholders commenced in January 2011 and has included:

- Discussions with representatives from Northern Territory Government Departments and local government.
- Discussions with representatives from non-government groups and key organisations in Katherine including NT Minerals Council, NT Environment Centre, Jawoyn Association, Katherine Hospital and the Katherine Police.
- An information stand at the Katherine Show where members of the Project team talked to the community and conducted a community perception survey on issues relevant to the Project.

The purpose of this consultation has been to seek community views on the proposed project and to gain an appreciation of issues, concerns and suggestions they may have for the project. A majority of people surveyed have indicated support for the project on the basis of the potential local and regional economic benefits.

Key areas of interest identified by the community included:

- local and regional employment opportunities
- environmental management and protection
- additional housing to support the project work force
- appropriate planning of associated support infrastructure including planning for additional population associated with the operational workforce

This valuable information will inform the EIS including the Social Impact Assessment (SIA).

Consultation is ongoing and there are a number of ways in which community members can become involved.

Community Input

Community input is an important part of the EIS. It will help the Project team understand what issues are important to the community and potentially causes social, economic or environmental impacts. It will also allow the Project team to identify ways to avoid, mitigate or manage any potential negative impacts and maximise positive ones.

EIS Public Consultation

April 2011	Mt Todd Gold Project Notice of Intent lodged with the NT Government
July 2011	Commencement of community consultation on EIS including stand at Katherine Show
August 2011	Environmental investigations and studies progressing
September 2011	Draft EIS Guidelines released for public comment (27 August – 12 September, 2011)
	Public Information Sessions (Katherine and Pine Creek)
	Final EIS Guidelines released
	Draft EIS Released for public comment

Have your say on the Project

Visit: www.mttodd.com.au for more information on Vista Gold and the Mt Todd Gold Project

Email: drwmail@ghd.com

Telephone: 1800 880 035

Write: Mt Todd Gold Project, GHD Pty Ltd, PO Box 351, Darwin NT 0801





Environmental Impact Statement



About this Study

In 2006 Vista Gold acquired mining and exploration leases for the Mt Todd Gold Mine located approximately 50 km north-west of Katherine and 250 km south of Darwin in the Northern Territory, Australia. The Mt Todd mine site contains several mineral leases covering approximately 5,365 ha.

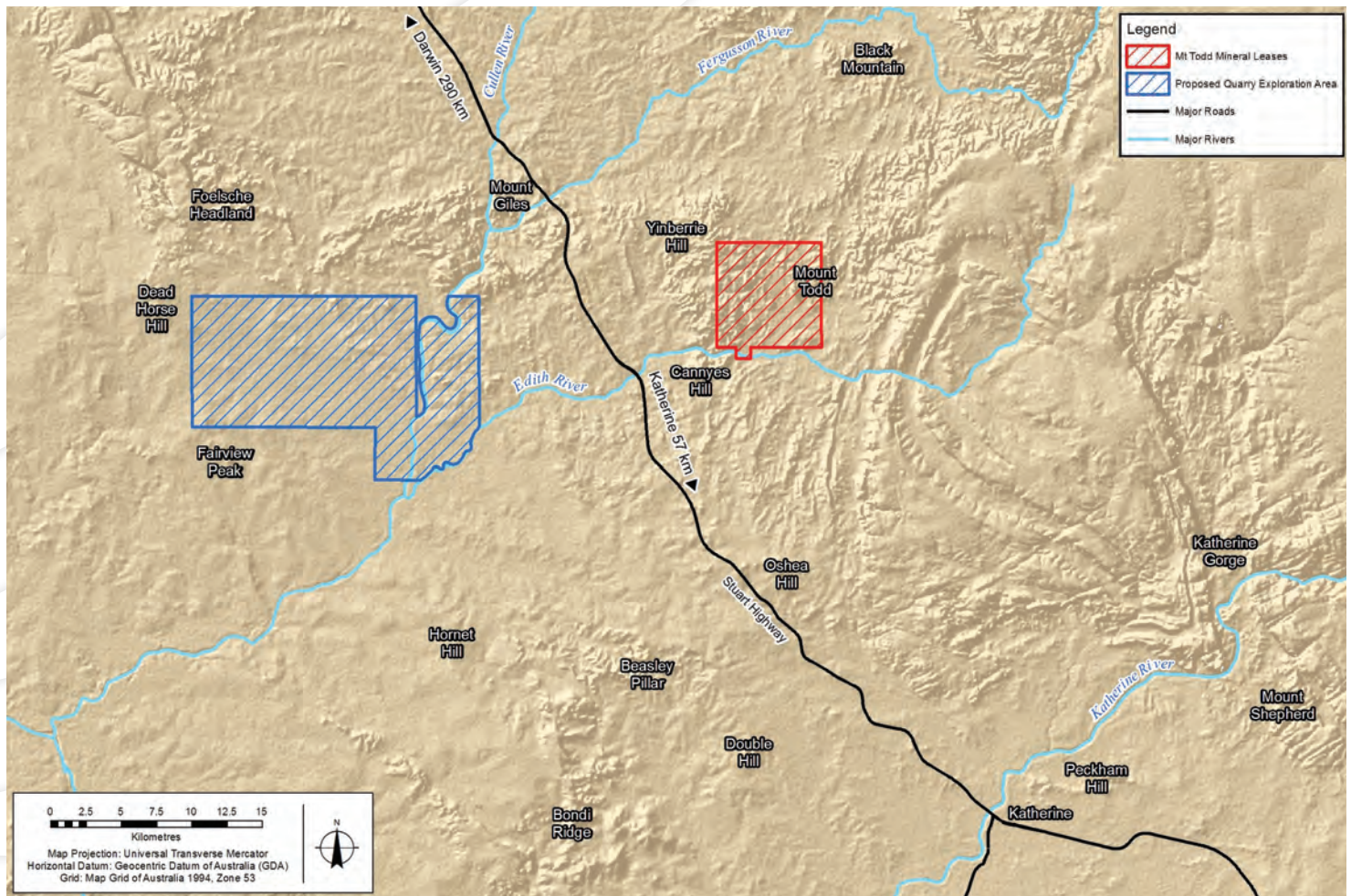
Vista Gold has engaged an independent consultant,

GHD Pty Ltd, to undertake an Environmental Impact Statement (EIS) to identify potential environmental, social, transport, accommodation, cultural and economic impacts associated with reopening and operating the Mt Todd Gold Mine and establishment of a limestone quarry approximately 20 km to the west of the site. Limestone will be used as a neutralising agent in mining operations and rehabilitation.

The Environmental Impact Statement – what’s involved?

The NT Department of Natural Resources Environment the Arts and Sport (NRETAS) has determined the Mt Todd Gold Project will be assessed under the NT *Environmental Assessment Act 1982* with a subsequent Environmental Impact Statement (EIS) required.

Locality Map



N:\AU\Toowoomba\Projects\Toowoomba\43\21801\GIS\Maps\4321801_031.mxd Data Source: NRETAS - Waterways (2011). Geoscience Australia - Locations (2008). Navteq - Major Roads (2008). Vista Gold - Mt Todd Mineral Lease Boundaries (2011). ESRI - SRTM (2008). GHD - Proposed Quarry Exploration Area (2011).

© 2011. Whilst every care has been taken to prepare this map, GHD, NRETAS, ESRI and Geoscience Australia make no representations or warranties about its accuracy, reliability, completeness or suitability for any particular purpose and cannot accept liability and responsibility of any kind (whether in contract, tort or otherwise) for any expenses, losses, damages and/or costs (including indirect or consequential damage) which are or may be incurred by any party as a result of the map being inaccurate, incomplete or unsuitable in any way and for any reason.

The Federal Department of Sustainability, Environment, Water, Population and Communities (SEWPAC) has declared the Project to be a controlled action requiring assessment under the *Environment Protection and Biodiversity Conservation Act 1999* (Cth). A number of other legislative acts are also relevant to the Project and will be considered as part of the EIS. One EIS will be prepared for the Project and assessed by both the Northern Territory and Federal Governments.

An EIS describes the potential positive and negative impacts of the proposed activities of the Project. These impacts need to be considered in relation to:

- The natural and physical environment – land, water, air, infrastructure, services, ecology, environmental values at the site and the surrounding areas
- The social and cultural environment including people, places, social networks, community services, heritage, cultures and way of life
- The economic environment

The EIS will recommend ways to reduce or remove potential negative impacts and enhance potential positive impacts from the Project.

EIS Public Consultation

April 2011	Mt Todd Gold Project Notice of Intent lodged with the NT Government
July 2011	Commencement of community consultation on EIS including stand at Katherine Show
August 2011	Environmental investigations and studies progressing
September 2011	Draft EIS Guidelines released for public comment (27 August – 12 September, 2011)
	Public Information Sessions (Katherine and Pine Creek)
	Final EIS Guidelines released
	Draft EIS Released for public comment

EIS Consultation

Consultation with stakeholders commenced in January 2011 and has included:

- Discussions with representatives from Northern Territory Government Departments and local government.
- Discussions with representatives from non-government groups and key organisations in Katherine including NT Minerals Council, NT Environment Centre, Jawoyn Association, Katherine Hospital and the Katherine Police.
- An information stand at the Katherine Show where members of the Project team talked to the community and conducted a community perception survey on issues relevant to the Project.

The purpose of this consultation has been to seek community views on the proposed project and to gain an appreciation of issues, concerns and suggestions they may have for the project. To date, the majority of people surveyed have indicated support for the project on the basis of the potential local and regional economic benefits.

Key areas of interest identified by the community included:

- local and regional employment opportunities
- environmental management and protection
- additional housing to support the project work force
- appropriate planning of associated support infrastructure including planning for additional population associated with the operational workforce

This valuable information will inform the EIS including the Social Impact Assessment (SIA).

Consultation is ongoing and there are a number of ways in which community members can become involved.

Community Input

Community input is an important part of the EIS. It will help the Project team understand what issues are important to the community and potentially causes social, economic or environmental impacts. It will also allow the Project team to identify ways to avoid, mitigate or manage any negative impacts and maximise positive ones.

Have your say on the Project

There are a number of opportunities for the community to become involved in the EIS process.

Visit: www.mttodd.com.au for more information on Vista Gold and the Mt Todd Gold Project, or

www.nt.gov.au/nreta/environment.assessment.register.comment to comment on the draft EIS Guidelines released by NRETAS

Attend: a Community Information Session – visit www.mttodd.com.au for details

Email: sharon.beattie@ghd.com

Telephone: 1800 880 035

Write: Mt Todd Gold Project, GHD Pty Ltd, PO Box 351, Darwin NT 0801



All feedback is important and will be incorporated into the decision making process.



Community Update

27 February 2013



Vista Gold would like to thank members of the Katherine community who attended the Mt Todd Community Update on Saturday, 16 February 2013.

The meeting provided a valuable opportunity for Vista Gold to share information, particularly relating to the recently issued Waste Discharge Licence and the water treatment program at the mine site.

Items raised at the meeting included the following:

- The water treatment program for water stored in Batman Pit is progressing very well, with the pH level of the water rising from 3.3 to 6.3. The target is a pH level of 7.2.
- The Northern Territory Government has issued a Waste Discharge Licence for the release of water from the mine site. A copy of the Licence and Vista Gold's Discharge Plan can be found on our website.
- Vista Gold will only release water when the quality of the water and the flow of the Edith River meet the 80% species protection level.

- An 80% species protection level means - 80% of all species are protected and unaffected. The remaining 20% of species may experience a temporary 10% reduction in reproductive potential and/or growth within the mixing zone during discharge. Outside the mixing zone and after discharge ceases, the 95% species protection level is met.
- So far this Wet Season, Vista Gold has not released any water from the mine site, in fact water levels have decreased due to evaporation.
- As part of the licence conditions daily monitoring results are now required to be posted on our website every month, when releasing water.
- Vista Gold is a responsible member of the local community and remains committed to safeguarding the environment.

For further information on the Mt Todd project or to download a copy of the presentation please visit our website.

Brent Murdoch
General Manager



Community Update

24 April 2013



Vista Gold is pleased to announce that the Northern Territory Government has awarded the Mt Todd gold project Major Project Status.

Major Project Status is awarded by the Government to projects that have the potential to deliver significant economic opportunities to the Northern Territory.

Speaking with the Minister for Mines and Energy, Willem Westra Van Holthe, Vista Gold President and CEO, Frederick Earnest said that he was extremely pleased with the NT Government's continued support for the redevelopment of the Mt. Todd gold project.

"Major Project Status is an indication of the Government's continued focus on the Mt Todd gold project and commitment to regional development in the Katherine region. Areas of shared interest – whether related to the departments of

Mines and Energy, Treasury, Lands and Planning or Environment – will now be handled at the highest level within the NT Government, with coordination provided by the office of the Chief Minister.

"This decision recognises the significance of the project and its benefit to the future development of the Northern Territory. We look forward to our continued work with the NT Government in the development of the Mt. Todd gold project," he said.

Vista Gold is encouraged by the potential of the Mt Todd gold reserve and genuinely sees an opportunity of bringing the mine back to life as a world-class gold mine.

For further information about the Mt Todd gold project visit our website.

Brent Murdoch
General Manager



Appendix B
Community Views Survey



Mt Todd Gold Project – Community Views Questionnaire

Purpose

The purpose of this survey is to collect information on community views on the proposed Mt Todd Gold Project. This includes the proposed re-opening of the Mt Todd Mine and accommodation components. This information will be used to inform the Environmental Impact Statement for the Project.

Questionnaire

Q1. *Are you a:*

- ▶ Katherine resident
- ▶ Neighbour (residing within 30km of Katherine)
- ▶ Northern Territory Resident
- ▶ Inter-state visitor
- ▶ Tourist

Q2. *Have you heard of this project previously? Yes/No*

Q2a. *How did you hear of it?*

Q3. *What is your level of support for this project?*

- ▶ Strongly not supportive
- ▶ Not supportive
- ▶ Neutral
- ▶ Supportive
- ▶ Very supportive

Q4. *What do you think will be the positive benefits from the Project?*

Q5. *What do you think will be the negative impacts from the Project?*

Q6. *What issues are most important to you?*

- ▶ Local employment opportunities
- ▶ Local and regional business opportunities
- ▶ Environmental management of the mine
 - Water quality
 - Loss of Gouldian Finch habitat



- Traffic
- Noise
- Dust
- ▶ Cultural heritage
- ▶ Management of the mine workforce to minimise any increase in anti-social behaviours
- ▶ Other, please identify.....
- ▶ None

Q7. In terms of accommodation for any additional workers for the Project, what would be your preference?

For construction workers,

- ▶ Fly In/Fly workers using temporary accommodation in Katherine or nearby areas
- ▶ Fly in Fly accommodation at a work camp located at the Project Site

For operational workers,

- ▶ New housing located in Katherine and nearby areas
- ▶ Other, please describe

Q8. Do you have any ideas for how the Project could perform to benefit the community?

Thank you for your time.



Appendix C
Public Notices and Advertising

Media Release



Call for Mt Todd Environmental Impact Statement

Friday 26 August 2011

Vista Gold Corp. welcomes the release of the Draft Guidelines for an Environmental Impact Statement (EIS) for the Mt Todd Gold Project.

Company President and Chief Operating Officer, Mr Frederick Earnest said the release of the guidelines was a major milestone in the process of their assessment of the site as a producing gold mine.

“We are encouraged by the potential of the Mt Todd site and are currently conducting a definitive feasibility study to determine if the property can be re-opened.”

The “brownfield” site is located approximately 50km north of Katherine and 250 kms south of Darwin in the Northern Territory, Australia. The mine tenement is approximately 160,800ha.

Over the past five years, Vista Gold has taken an orderly, methodical and conservative approach to determine the future of the site.

In November 2010, The Northern Territory Government renewed its agreement with Vista Gold for the care and maintenance of the site, demonstrating both the Government’s and Vista Gold’s commitment to assessing the feasibility of developing the site.

The Northern Territory Minister for Natural Resources, Environment and Heritage, Karl Hampton MLA recently determined the requirement for an EIS under the Environmental Assessment Act.

The Draft EIS Guidelines are available from Saturday, 27 August 2011 for public comment until Monday, 12 September 2011 and are available at:
<http://www.nt.gov.au/nreta/environment/assessment/register/index.html>

Members of the public wishing to gain more information on the site may contact Vista Gold through the Mt Todd project website at mttodd.com.au

“We are working closely with authorities and are committed to managing this site in an environmentally sound manner,” Mr Earnest said.

-ends-

Twittercue: Vista #Gold Corp. welcomes release of Draft EIS Guidelines for the Mt Todd Gold Project. #mining #resources #topend

Media enquiries: Jeannette Button +618 89419169, +61 407 727 080

Katherine Times

YOUR TOWN & COUNTRY WEEKLY

Circulated in Katherine, greater Katherine district, Darwin, Tennant Creek, Alice Springs and available throughout most other centres in our great Northern Territory.

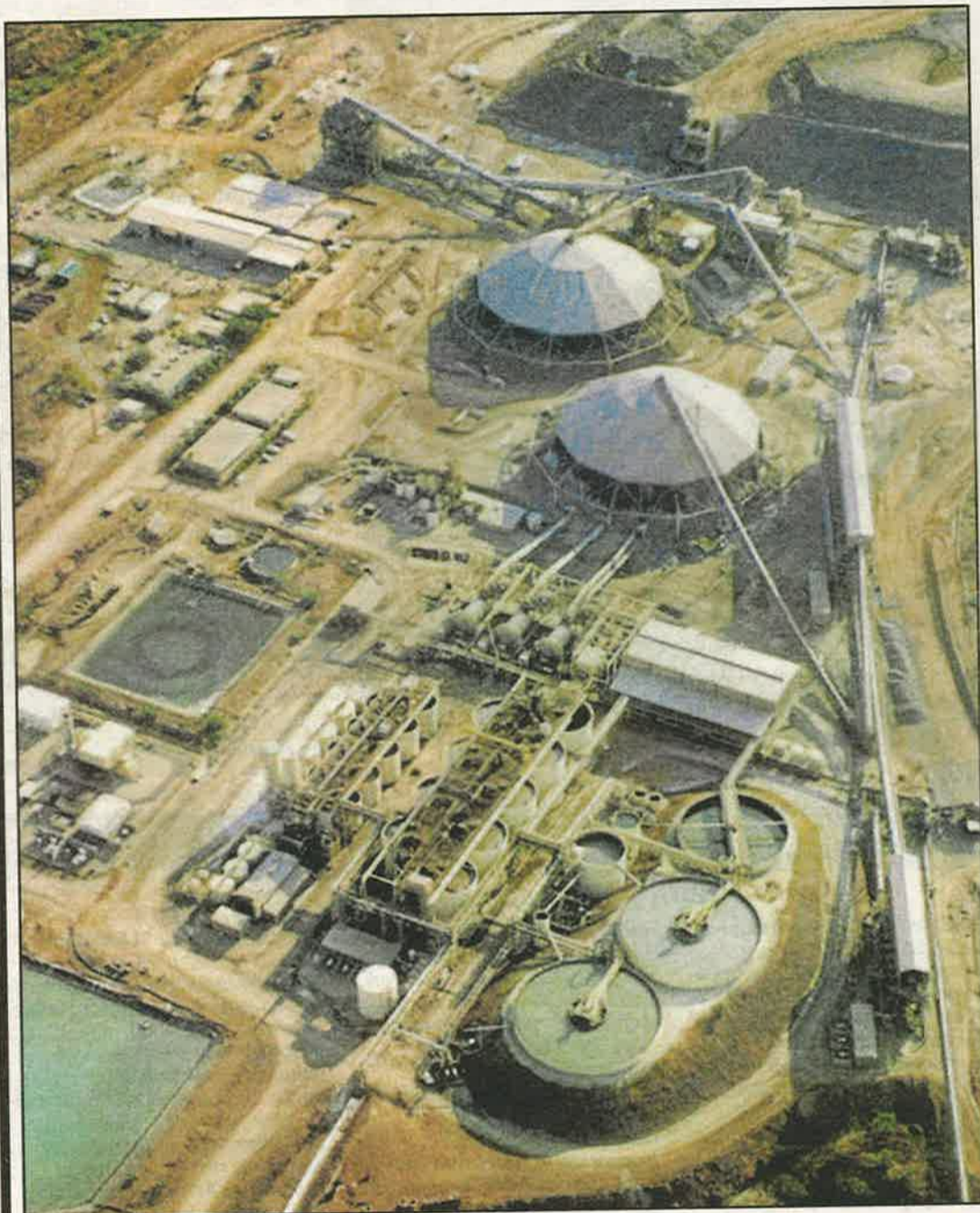
Ph 8972 1111 Fax 8971 0120

WEDNESDAY, SEPTEMBER 21, 2011

Vol 29 Issue 36 \$1.10

400 jobs if old

gold mine opens



The bad old days ... the Mt Todd Gold site processing plant before it was closed down

Public meetings set to be held

THE potential re-opening of the MT Todd gold mine would provide an economic boon for the Katherine region.

US company Vista Gold, which acquired the unused site for \$2.1 million in 2006 has signalled its intention to reopen the mine with its feasibility study set to be complete this year.

Vista Gold has also engaged independent consultant, GHD Pty Ltd, to undertake an Environmental Impact Statement to identify potential environmental, social, transport, accommodation, cultural and economic impacts associated with reopening and operating the gold mine.

Under the planned timeline, production at the mine would be in full swing in about 2.5 years, Vista Gold environmen-

tal manager Andrew Sawicki told Territory media this week.

Mr Sawicki said the mine, which currently employs about 70 people, would employ about 400 by then.

Vista Gold has decided to forge ahead with its plan to re-open the mine because of the high price of gold.

According to the company the total mineral resource estimate for the MT Todd deposit is now almost 6 million ounces.

Vista Gold also believes there are more reserves at other sites close to the mine that could potentially yield better returns. The Mt Todd mine, 50km north of Katherine, was closed over a decade ago and the Territory Government was

Continued Page 3

Another UFO spotted over Katherine
- Page 5 -

New piece of history for museum
- Page 3 -

JALYN FORD
LMVD291 KATHERINE

8972 2128

www.jalynford.com.au



All photos are for illustration purposes only. All prices are drive away and include Govt. Stamp Duty and 6 months NT registration.

Our Territory, Your Choice



\$16,990

FIESTA CL HATCH

5 speed manual, voice control, German engineering



ALL NEW MODEL
\$26,500

FOCUS TREND HATCH

2.0L direct injection, cruise control, alloy wheels



Was \$37,990
NOW ONLY
\$35,990

XR6 LIMITED EDITION

Full leather plus \$\$\$\$ more in extras!



SUV NOW IN STOCK!!

TERRITORY DIESEL

All new 2.7L V6 turbo diesel, 7 seater



The Public Notices ran in the NT News on Saturday 17 and 24 September and the Katherine Times on Wednesday 21 September.

Media coverage included ABC Radio, Katherine Community Radio and the Katherine Times.



Public Notice

Vista Gold Australia will hold community information sessions regarding progress to date and proposed plans for the Mt Todd Gold Project, 50 kms north-west of Katherine, on:

- Saturday 24 September, 9am – 12 noon, at the Woolworths Shopping Centre, Katherine
- Monday 26 September, 6.30pm – 8.30pm, at the Pine Creek Community Hall
- Tuesday 27 September, 7.30am at the Katherine Chamber of Commerce Business Breakfast

Local community members are encouraged to attend and participate.

For further information telephone 1800 880 035 or visit www.mttodd.com.au



Community Information Session

Vista Gold Australia will hold community information sessions regarding progress to date and proposed plans for the Mt Todd Gold Project, 50 km north-west of Katherine, on:

- Saturday 24 September, 9am – 12 noon, at the Woolworths Shopping Centre, Katherine
- Monday 26 September, 6.30pm – 8.30pm, at the Pine Creek Community Hall
- Tuesday 27 September, 7.30am at the Katherine Chamber of Commerce Business Breakfast

Local community members are encouraged to attend and participate.

For further information telephone 1800 880 035 or visit www.mttodd.com.au

Public Notice

The Public Notices ran in the NT News on Saturday 17 and 24 September and the Katherine Times on Wednesday 21 September.

Media coverage included ABC Radio, Katherine Community Radio and the Katherine Times.



Appendix D
Media Release

Media Release



Vista Gold Australia invites local community to have their say

Friday 16 September 2011

Vista Gold Australia will hold a number of community information sessions regarding the Mt Todd Gold Project, 50 kms north-west of Katherine, starting next week.

Ray Iacono, Managing Director Vista Gold Australia says that the information sessions will enable Vista Gold to update the community on their progress to date and provide opportunities for the public to comment on aspects of the project.

“To date, we have received very positive feedback from the community based on their support for the potential local and regional economic benefits. We encourage the communities of Katherine and Pine Creek to participate in these information sessions so that we have a clear understanding of the issues that are important to them,” Mr Iacono said.

Vista Gold has engaged independent consultant, GHD Pty Ltd, to undertake an Environmental Impact Statement (EIS) to identify potential environmental, social, transport, accommodation, cultural and economic impacts associated with reopening and operating the gold mine.

“The EIS will recommend ways to reduce or remove potential negative impacts and enhance potential positive impacts from the mine project.”

The community information sessions will be held on:

- Saturday 24 September, 9am – 12 noon, at the Woolworths Shopping centre, Katherine
- Monday 26 September, 6.30pm – 8.30pm, at the Pine Creek Community Hall
- Tuesday 27 September, 7.30am at the Katherine Chamber of Commerce Business Breakfast

Since acquiring the Mt Todd project in 2006, Vista Gold has taken an orderly, methodical and conservative approach to determine the future of the site.

In November 2010, The Northern Territory Government renewed its agreement with Vista Gold for the care and maintenance of the site, demonstrating both the Government’s and Vista Gold’s commitment to assessing the feasibility of developing the site.

With an improvement in the gold price, Vista Gold Australia is working towards getting the site back to production, with approvals and permits expected to be in place during 2012.

-ends-

Media enquiries: Jeannette Button 89419169, 0407 727 080



Appendix E
Mt Todd Web Page



- ABOUT US
- ENVIRONMENT
- COMMUNITY
- EMPLOYMENT
- NEWS



Current Gold Price

International gold news, commentary and prices.

[View Now](#)

Quick Links

- > [Vista Gold Website](#)
- > [Gold Price Australia](#)
- > [View Technical Reports](#)

Welcome to the Mount Todd Gold Mine

The Mt Todd gold mine is located approximately 50km north of Katherine and 250 km south of Darwin. The Mt Todd mine site contains several mineral leases covering approximately 5,365 ha.

The site was acquired by Vista Gold and its wholly owned subsidiary Vista Gold Australia in 2006.

In November 2010, The Northern Territory Government renewed its agreement with Vista Gold for the care and maintenance of the site, demonstrating both the Government's and Vista Gold's commitment to assessing the feasibility of developing the site.

Vista Gold is currently working through and investigating the environmental, technical and economic factors of the project in order to make a sound and informed decision regarding the future of the mine.





GHD


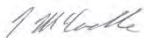
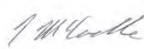
Level 5, 66 Smith Street
Darwin NT 0800

T: (08) 8982 0100 F: (08) 8981 1075 E: drwmail@ghd.com.au

© GHD 2013

This document is and shall remain the property of GHD. The document may only be used for the purpose for which it was commissioned and in accordance with the Terms of Engagement for the commission. Unauthorised use of this document in any form whatsoever is prohibited.

Document Status

Rev No.	Author	Reviewer		Approved for Issue		
		Name	Signature	Name	Signature	Date
1	N Domnisse	I McCardle K Fitzpatrick	 	I McCardle		04/06/13