

**Appendix 25.  
Estimates of PAF Waste Rock  
Volumes at Fountain Head**



---

## TECHNICAL MEMORANDUM

**TO:** ERIAS Group Pty Ltd  
**ATTENTION:** David Browne and Kate Sinai  
**FROM:** Russell Schumann  
**DATE:** 12 May 2021  
**DOCUMENT NO:** S1316 / J000588 / R1423  
**SUBJECT:** Estimates of PAF waste rock volumes at Fountain Head

---

## 1. INTRODUCTION

Previous geochemical testing of waste Rock from the Fountain Head gold project (EGi Document Number: S1316/J000373/R1369, July 2020), suggested Total S content might be a suitable parameter to use for estimating the volume of potentially acid forming (PAF) rock that will be excavated from the expanded Fountain Head pit proposed as a part of PNX Metals' Fountain Head Gold Project. However, only 111 samples with Total S assay values were available from this study, which was considered too small a data set to provide an estimate of likely PAF rock volume. The only sulphur data available for enough samples to provide such an estimate were derived from pXRF analysis. Comparison of pXRF sulphur data with Total S data indicated very poor correlation, suggesting the pXRF data were of insufficient quality to allow an estimate of the volume of PAF rock to be made. Consequently, a recommendation was made that more extensive assaying should be undertaken to provide a larger data set of Total S assay results of waste rock and ore from Fountain Head.

Subsequently, PNX Metals submitted pulp samples selected from 32 RC drill holes and 1 DD hole around the current Fountain Head pit for analysis, which included sulphur and arsenic using 4-acid digestion followed by ICP-AES analysis. This procedure provides Total S content in most cases. Samples were selected with an approximately 10 m gap between samples through the oxide/transition zones and at approximately a 5 m gap in fresh rock. A total of 551 samples were assayed from the 33 holes.

Using the results of the Total S assays, estimates of PAF waste rock volumes have been made based on the current mine plan and using the Total S criteria derived from previous geochemical testing of waste rock at Fountain Head.

## 2. ARD CLASSIFICATIONS BASED ON TOTAL S AND GEOCHEMICAL TESTS

Due to the relatively low acid neutralising capacity (ANC) and poor reactivity of neutralising materials in waste rock at Fountain Head, criteria based on Total S were selected as the best potential option for routine classification of ARD rock types. Figure 1 presents box plots showing the distributions of Total S in samples from the Fountain Head pit drill holes which were previously used for ARD classification. Sulphur distributions were split according to ARD classification as non-acid forming (NAF), potentially acid forming – low capacity (PAF-LC) or PAF. The results show that NAF samples can be differentiated from PAF/PAF-LC samples by applying a Total S cut-off of 0.2%S, with 95% of samples classified NAF having a Total S value of 0.2% or less, and all PAF samples and 60% of PAF-LC samples having a Total S value of greater than 0.2%S. Further differentiation between PAF and PAF-LC materials can be achieved using a Total S cut-off of 0.4%, with 95% of PAF samples having a Total S above 0.4%, although around 25% of PAF-LC samples also contained more than 0.4% Total S.

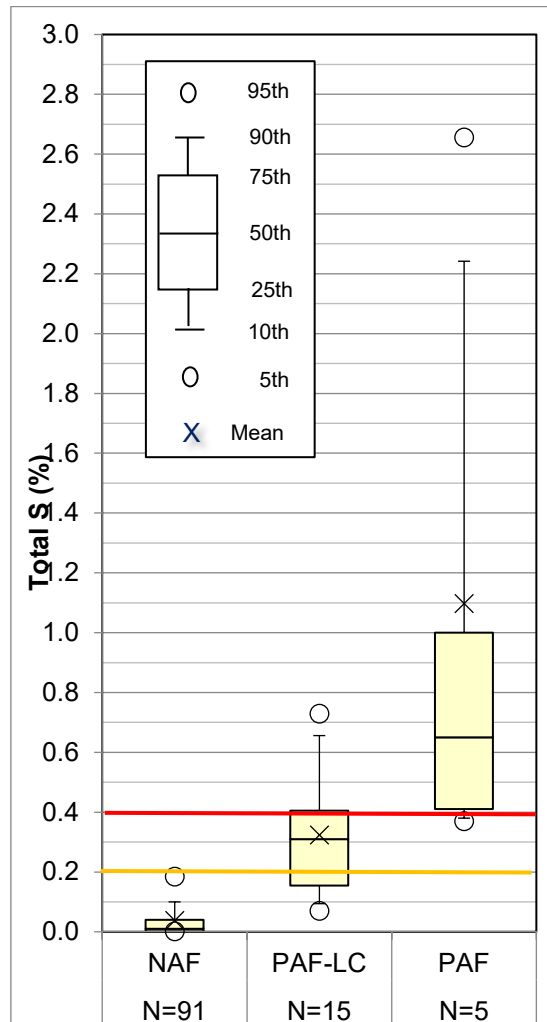


Figure 1: Box plots showing % Total S for NAF, PAF-LC and PAF samples from drill holes in the Fountain Head pit from a previous study (EGi Document Number: S1316/J000373/R1369, July 2020). Classifications were based on full geochemical test results. The yellow line shows Total S = 0.2% and the red line Total S = 0.4% .

Using these Total S criteria shown in Table 1, samples from the original set of 111 samples were classified as either PAF, PAF-LC or NAF. These classifications were then compared with classifications based on geochemical test results. The results are summarised in Table 2 below. Using Total S assay results to classify the samples as either PAF, PAF-LC or NAF, gave agreement with the corresponding classifications made using geochemical test results for nearly 90% of the samples. A further 8% of samples were given a conservative classification (PAF vs PAF-LC or PAF-LC vs NAF) when Total S was used instead of the full geochemical test results to provide the ARD classification. Only 5% of samples were given a lower-risk ARD classification (PAF-LC vs PAF or NAF vs PAF-LC) when Total S was used instead of the full geochemical test results to provide the ARD classification.

These results suggest that Total S assay results can be used with a reasonable degree of confidence to estimate the amount of higher risk waste rock which will be excavated from the pit during mining, given sufficient Total S data is available.

*Table 1 – Criteria based on Total S to classify ARD types for rock samples from Fountain Head*

ARD Classification based on Total S	Total S
PAF	$\geq 0.4\%$
PAF-LC	$0.2\% \leq \text{Total S} < 0.4\%$
NAF	$< 0.2\%$

*Table 2 – Acid forming characteristics of rock samples from Fountain Head*

ARD Classification based on Geochemical Testing	ARD Classification based on Total S	Relative Number of Samples (%)
PAF	PAF-LC	1%
PAF-LC	PAF	3%
PAF-LC	NAF	4%
NAF	PAF-LC	5%
Geochemical Testing and Total S give the same ARD classification		87%

### 3. TOTAL S ASSAY RESULTS

#### All Samples

Total S analysis was conducted on 551 samples selected from 32 RC drill holes and 1 DD hole around the current Fountain Head pit (Figure 2), with samples selected approximately every 10 m through the oxide/transition zones and approximately every 5 m through fresh rock. For most of the samples, the interval represented was 1 m.

The details of the assayed samples are provided in Table 3. The full set of assay results are provided at the end of this document (Table 8). The 551 samples represent just over 680 m of rock of which about 85% intercepted waste rock, with the remainder representing ore. Just under 80% of the samples were from fresh rock with around 14% from oxide and 8% from transitional rock. Around one third of the samples were obtained from within the pit shell for the

proposed expanded Fountain Head pit, with the remaining two thirds of the samples primarily from deeper fresh rock outside the pit shell.

Figure 3 shows box plots displaying the distribution of Total S in oxide, transitional and fresh rock samples, including all waste rock and ore samples. Results show that over 95% of oxide and all transitional rock samples had very low Total S content (<0.2% S) indicating that oxide/transitional rock samples from the Fountain Head pit will, in the main, be NAF. For the fresh rock samples, Total S assays suggest around 85% of samples are NAF (Total S <0.2%) with around 10% of samples PAF-LC (0.2% ≤ Total S < 0.4%), and about 5% of samples PAF (Total S ≥ 0.4%).

*Table 3 – Characteristics of samples assayed for Total S – All samples*

<b>Sample Type</b>	<b>Total interval length of samples represented by sample type (m)</b>	<b>Relative amount of sample represented by sample type (%)</b>
<i>Type</i>		
Waste	573.5	84.2
Ore	107.7	15.8
Total	681.2	100
<i>Weathering</i>		
Oxide	98	14.4
Transition	56	8.2
Fresh	527.2	77.4
Total	681.2	100
<i>Location</i>		
Within current expanded pit shell	215.3	31.6
Outside current expanded pit shell	465.9	68.4
Total	681.2	100

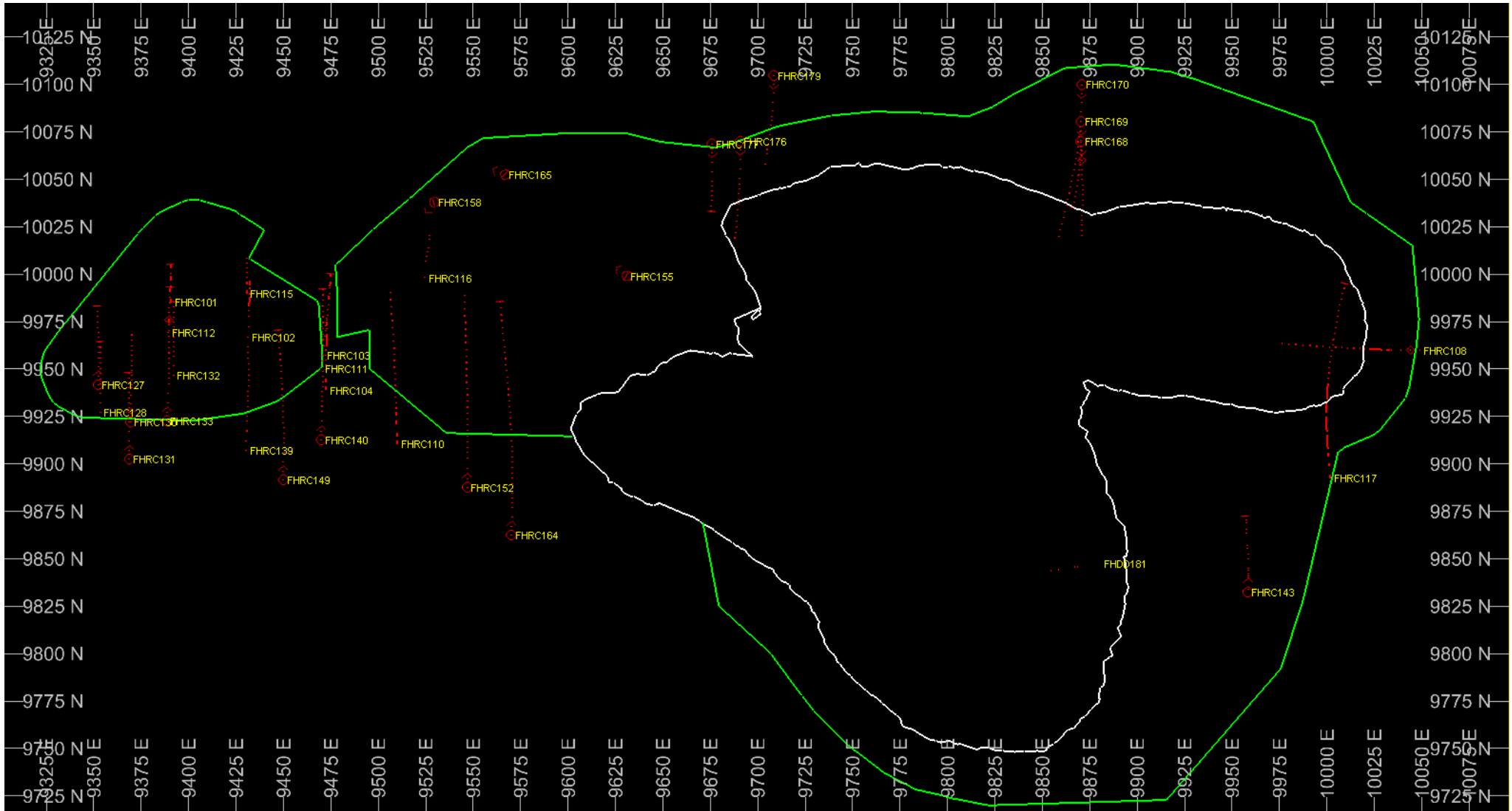


Figure 2: Plan view showing traces for drill holes sampled for total S assay. The white line outlines the current Fountain Head pit and the green line the expanded pit.

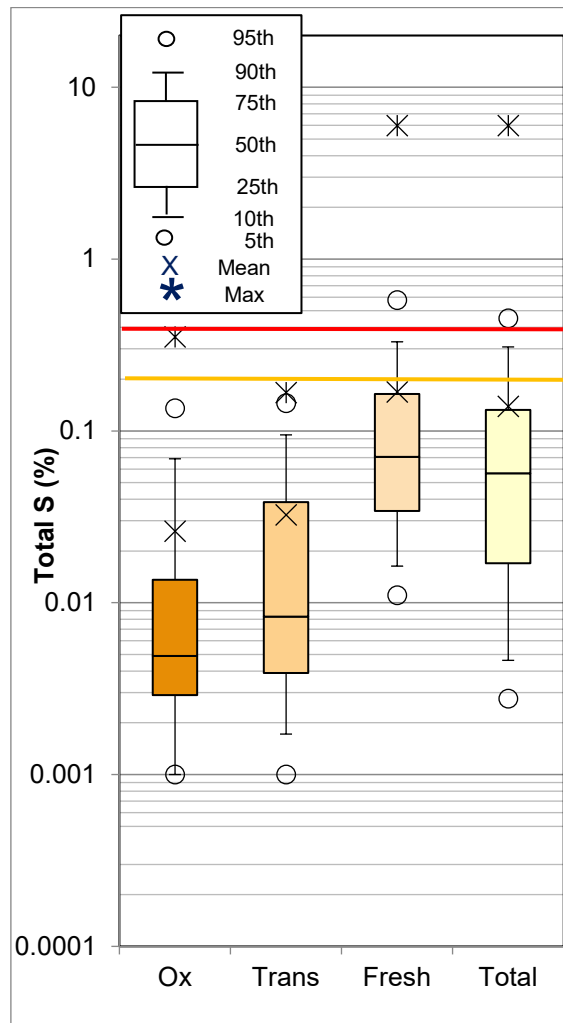


Figure 3: Box plots showing distributions of % Total S for Oxide, Transitional and Fresh samples from drill holes around the Fountain Head pit – All samples. The yellow line shows Total S = 0.2% and the red line Total S = 0.4% .

### Oxide/Transitional Samples

Figure 4 shows the distributions of Total S for waste and ore samples collected from within the oxide/transitional rock zones. Total S values for oxidised waste rock were very low with all samples from within the proposed expanded pit returning a Total S assay of below 0.2%. When all the oxide/transitional waste rock samples were included in the data set, over 95% of samples gave a Total S content below 0.2%, with no samples containing more than 0.4% S.

All ore samples tested from within the oxide/transitional zones were inside the current pit design. These samples all had a Total S content of below 0.01%, although only 5 samples were included in this set.

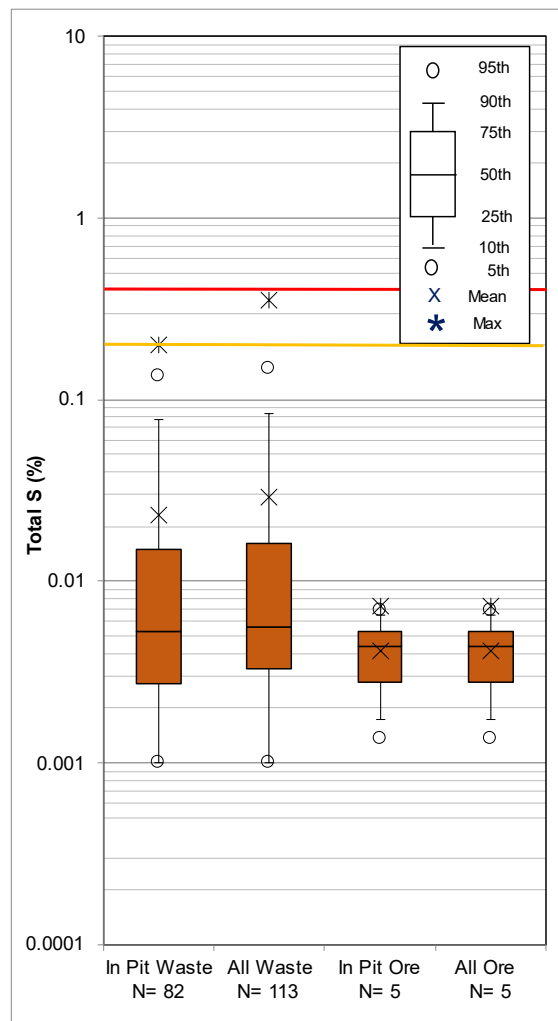


Figure 4: Box plots showing distributions of % Total S in oxide/transitional samples. The yellow line shows Total S = 0.2% and the red line Total S = 0.4% .

Using the criteria based on Total S (Table 1), ARD classifications were estimated for the oxidised rock samples. Results (Table 4) suggest that there is likely to be very little waste rock (represented by the samples tested) excavated during expansion of the Fountain Head pit during the proposed mining operation which will potentially produce low pH drainage, with all waste rock samples classified as NAF.

If the oxidised waste rock sample set is expanded to include samples outside the current pit design, 98% of the sampled waste rock interval is classified as NAF, with 2% PAF-LC and no PAF samples (Table 4). Based on the sample

set analysed, results suggest that oxidised and transitional waste rock can be considered NAF and therefore unlikely to produce low pH drainage during surface storage.

Only five ore samples were tested from within the oxide/transitional rock zones at Fountain Head, with ore generally hosted within fresh rock. All ore samples hosted within oxidised rock were classified as NAF (Table 4). Results suggest that, like waste rock, ore samples hosted within oxidised rock can be considered NAF. Consequently, tailings generated from this ore type would be unlikely to produce low pH drainage during surface storage. However, this sample type is not overly represented by the current sample set and may not be particularly illustrative.

*Table 4 – ARD classifications based on Total S assay of oxide/transitional rock samples.*

<b>Sample Type</b>		<b>NAF</b>	<b>PAF-LC</b>	<b>PAF</b>	<b>Total</b>
In Pit Waste	Interval Length (m)	110	0	0	110
	Interval Length (%)	100	0	0	100
All Waste	Interval Length (m)	146	3	0	149
	Interval Length (%)	98	2	0	100
In Pit Ore	Interval Length (m)	5	0	0	5
	Interval Length (%)	100	0	0	100
All Ore	Interval Length (m)	5	0	0	5
	Interval Length (%)	100	0	0	100

### **Fresh Samples**

Figure 5 shows the distributions of Total S for fresh rock samples. Total S values for fresh ore samples were generally higher than in fresh waste rock samples, with only 5% of fresh waste rock samples from within the proposed expanded pit returning a Total S assay of above 0.2% (cf. ~40% of fresh ore samples with Total S >0.2%). When the deeper fresh waste rock and ore samples were included in the data sets, the percentage of fresh waste rock samples with a Total S content above 0.2% increased to around 10%, with around 50% of ore samples giving a Total S content above 0.2%.

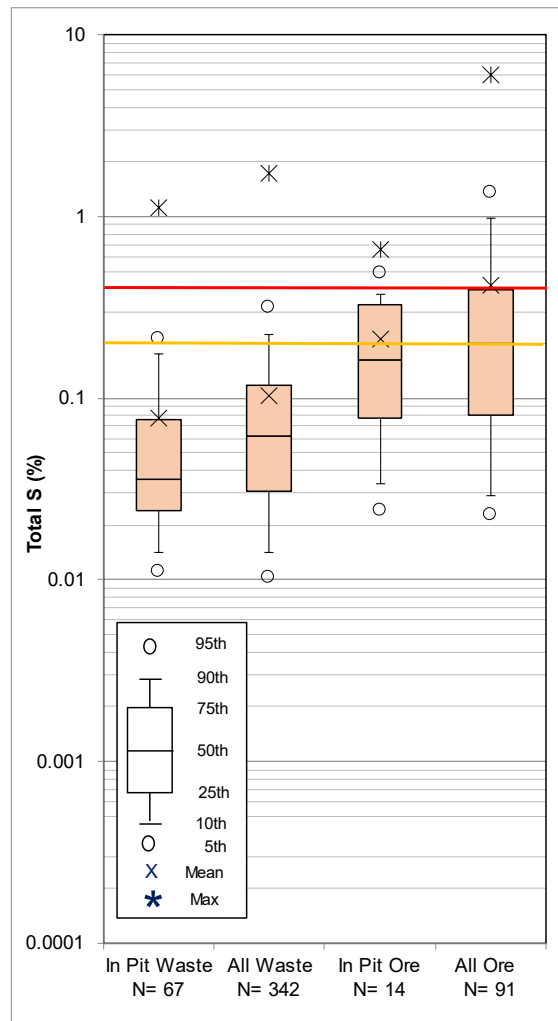


Figure 5: Box plots showing distributions of % Total S in fresh rock samples. The yellow line shows Total S = 0.2% and the red line Total S = 0.4% .

Using the criteria based on Total S (Table 1), ARD classifications were also estimated for fresh waste rock and ore samples (Table 5). Results show that around 95% of fresh waste rock sampled from within the proposed expanded Fountain Head pit classified as NAF, with most of the remaining samples classifying as PAF-LC (4%). Only a very small portion (1%) of the fresh waste rock samples gave a PAF classification. When the deeper fresh rock samples were included in the analysis, the number of samples classified as NAF decreased to around 90%, but only 2% classified as PAF (8% PAF-LC). These results suggest the volume of PAF fresh waste rock (represented by the current sample set) removed from the Fountain Head pit during mining would form a relatively low proportion of the total fresh waste.

The number of fresh ore samples from within the proposed pit classified as NAF was around 60%, with the majority of the remaining fresh ore samples classifying as PAF-LC (Table 5) and only 3% PAF. These results suggest that ore stockpiled during mining would be unlikely to produce significant amounts of low pH drainage during operations. However, tailings produced from processing of the fresh ore and any long term fresh low-grade stockpiles may have a risk of low pH drainage upon exposure to oxygen, although relatively low capacity. Note however, previous testing of tailings samples did indicate the possibility of drainage from cyanide leached ore may contain elevated arsenic and this is currently being investigated further.

When ore samples from deeper fresh rock were included in the analysis, the number of samples classifying as PAF increased to around 20%, with only just over half of the samples classified as NAF. These results indicate that should

the pit design be expanded to capture deeper ore, the tailings produced from processing may have increased risk of low pH seepage during surface storage.

Table 5 – ARD classifications based on Total S assay of fresh rock samples.

Sample Type		NAF	PAF-LC	PAF	Total
In Pit Waste	Interval Length (m)	83.5	4	1	88.5
	Interval Length (%)	94	5	1	100
All Waste	Interval Length (m)	380.5	35	9	424.5
	Interval Length (%)	90	8	2	100
In Pit Ore	Interval Length (m)	7	4.5	0.3	11.8
	Interval Length (%)	59	38	3	100
All Ore	Interval Length (m)	55.9	24.5	21.3	101.7
	Interval Length (%)	55	24	21	100

## 4. ESTIMATION OF PAF WASTE ROCK VOLUMES

Using the percentage of each ARD rock type based on Total S assay results detailed in Section 3, the volumes of NAF, PAF-LC and PAF waste rock and ore were estimated based on the volumes of waste rock and ore to be mined under the current mine plan. This was only done for fresh waste rock and ore samples, as the analysis of Total S data from oxide/transitional waste rock and ore suggest that these materials can be considered NAF.

Volumes (and masses) of both oxidised (oxide + transitional) and fresh waste rock and ore to be mined from the proposed expanded Fountain Head pit are shown in Table 6. Using the percentages of fresh waste rock and ore estimated as NAF, PAF-LC and PAF using Total S assay (Table 5) and multiplying by the actual volumes of fresh waste rock and ore shown in Table 6 (fresh rock samples only), the volumes of each ARD class of waste rock and ore were estimated. Results are provided in Table 7. The estimates show only around 60,000 m<sup>3</sup> (150,000 t) of PAF waste rock and 20,000 m<sup>3</sup> (70,000 t) of PAF ore will be mined during the proposed Fountain Head project. The total amount of PAF and PAF-LC waste rock is estimated at around 280,000 m<sup>3</sup> using the method described above. This value compares well with the volume of 320,000 m<sup>3</sup> of PAF (PAF + PAF-LC) waste rock estimated from a sulphur block model (see below).

Figure 6 shows estimated volumes (and masses) of all waste rock and ore to be mined during the proposed expansion of the Fountain Head pit. This figure includes oxide/transitional material which were assumed to all classify as NAF. Results suggest that a substantial portion (~95%) of waste rock will be NAF, with about two thirds of the ore mined also NAF.

It should be noted that the estimated volumes shown in Table 7 were based on a limited number of samples and assume these samples represent the distribution of sulphur across the entire rock assemblage to be mined. Typically, in other mines we have examined in similar geological settings within this region, sulphur mineralisation is often associated with quartz veining which may result in very narrow regions of PAF rock. The lack of spatial resolution in the samples examined here because of the limited number of samples assayed, may mean that the estimates of PAF waste volumes are compromised and these volumes should be taken as indicative only.

Table 6 – Volumes of waste rock and ore to be mined from the expanded Fountain Head pit.

Type	Volume (Mm3)	Mass (Mt)
Ore-Oxide	0.12	0.31
Ore-Fresh	0.94	2.57
Ore-Total	1.06	2.88
Waste-Oxide	1.66	4.22
Waste-Fresh	4.90	13.38
Waste-Total	6.56	17.60
All-Total	7.62	20.48

Table 7 – Estimated volumes of fresh waste rock and ore according to ARD Class to be mined from the expanded Fountain Head pit.

ARD Class	Relative Amount	Volume (Mm3)	Mass (Mt)
<i>Fresh Ore</i>			
NAF	59.3%	0.56	1.52
PAF-LC	38.1%	0.36	0.98
PAF	2.5%	0.02	0.07
Total	100.0%	0.94	2.57
<i>Fresh Waste</i>			
NAF	94.4%	4.62	12.62
PAF-LC	4.5%	0.22	0.60
PAF	1.1%	0.06	0.15
Total	100.0%	4.90	13.38

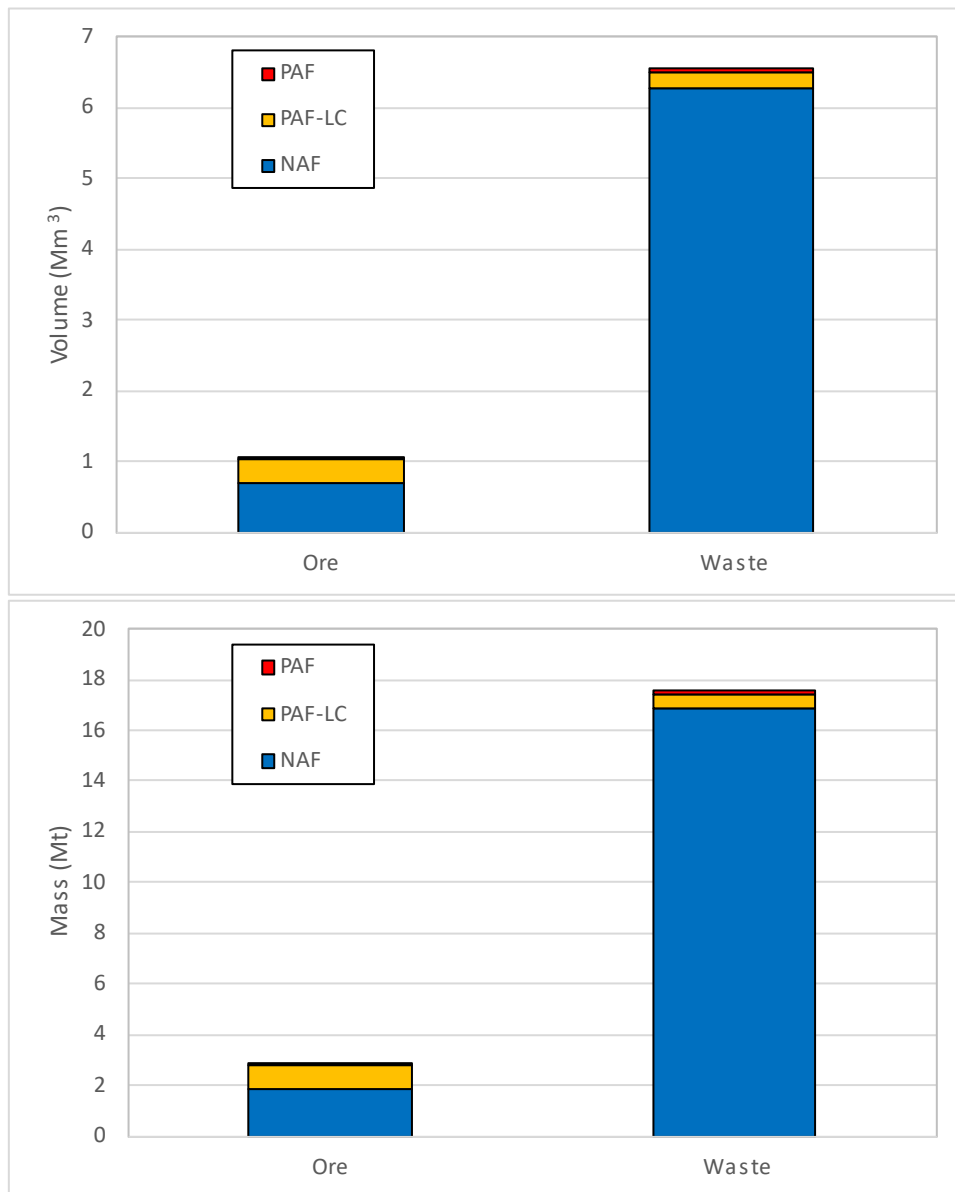



Figure 6: Estimates of total waste rock and ore volumes (top) and masses (bottom) as a function of ARD classification based on Total S.

In a different approach to estimate likely volumes of PAF waste which will be mined during the project, an attempt was made to generate a block model based on the limited Total S data available from the current assay data set and the criteria for ARD classification shown in Table 1.

Wireframes approximating the PAF/PAF-FC zones (based on the assigned PAF classification from sulphur assay data) were created in an attempt to extrapolate the sparse sulphur data across the model. The sulphur assay results shown in Figure 7 demonstrate the current lack of continuity in the available data, and also show any PAF materials are likely restricted to fresh rock. Consequently oxide/transitional rock was excluded from the development of the block model.

Entire bedding surfaces were adjusted (lifted and dropped) to create the PAF/PAF-LC zones, without reshaping the wireframes, which may have led to some interpretation bias (Figure 8). The PAF wireframes were filled with blocks, and then combined with the resource block model. The high sulphur content (>0.4 % S) PAF material is expected to be less laterally continuous than lower sulphur content (PAF-LC) material, but this of course has not been reflected in the



PAF wireframes due to lack of data. In addition, the parent block size of the resource model (10 x 5 x 10 m) is at a scale larger than is expected for individual PAF zones (<4m approximately), leading to potential imprecision in this approach to estimation of PAF rock volumes.

Figure 9 shows the volumes and masses of waste rock and ore which will be mined under the current mine plan. Just over 1 Mm<sup>3</sup> of ore (2.8 Mt) and 6.5 Mm<sup>3</sup> of waste rock (17.6 Mt) will be disturbed during the mine life. Using a cut-off grade of 0.4 g/t Au for ore for the resource block model, the volume of PAF waste rock was estimated using the block model developed as described above. A volume of 320,000 m<sup>3</sup> (870,000 t) of PAF rock is estimated to be mined during the project based on the current available Total S data. This represents approximately 5% of the waste rock which will be mined.

The estimated volumes of PAF waste will be refined as more sulphur data is obtained during future drilling programmes. Correlations between potential geological controls on sulphide content are also being examined to determine if any of these controls could be used to define regions of PAF waste. Further testing is underway to better understand the chemistry of drainage that may be generated by exposure of the various classes of waste rock (and tailings) to oxidative conditions. Based on volume estimates and predicted drainage water quality, potential impacts on receiving water quality and management strategies to mitigate any impacts can be developed.

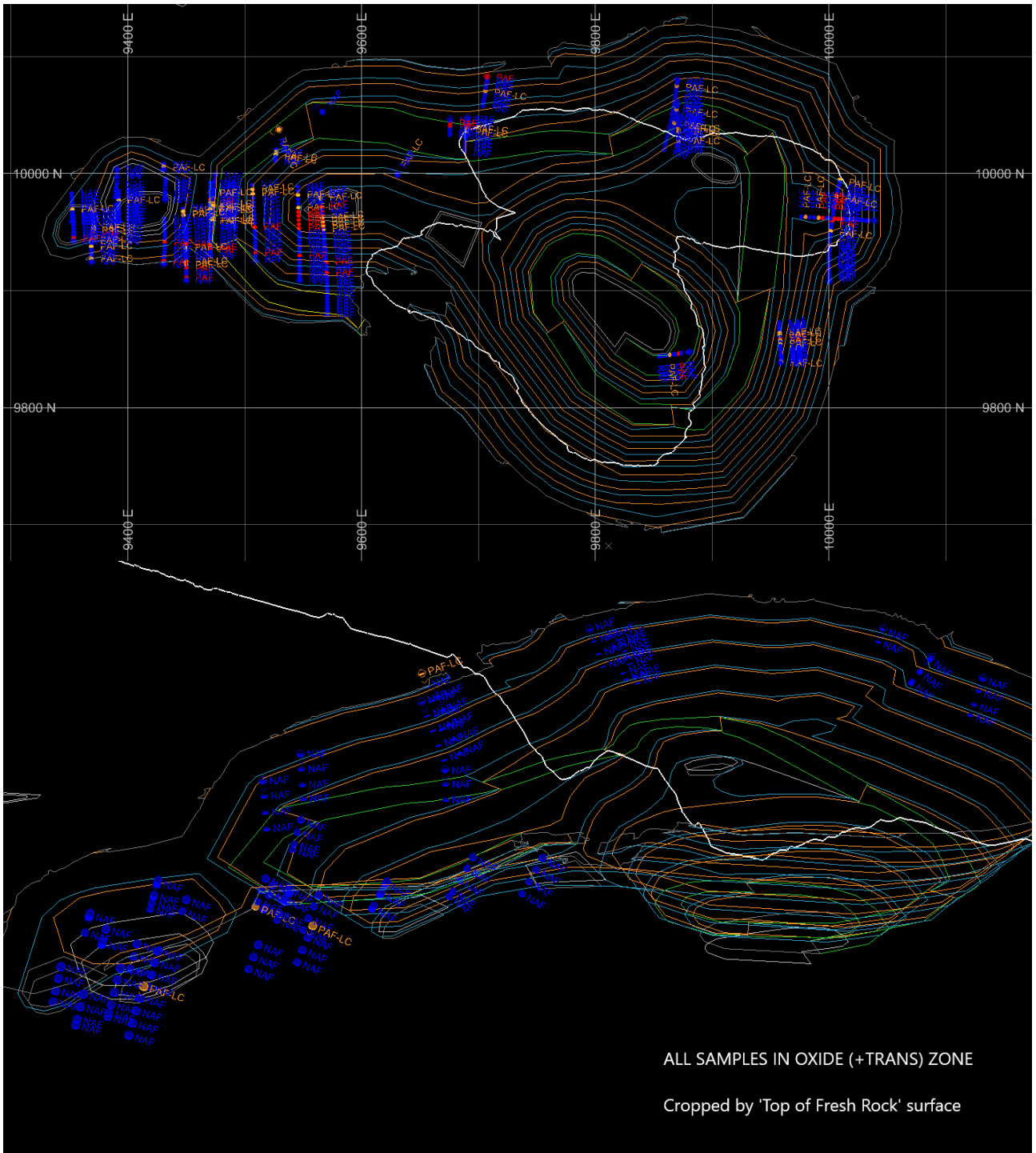


Figure 7: Total S assay results overlaid on the pit shell showing fresh rock samples (top) and oxide/transitional rock samples (bottom). Blue labels indicate NAF, orange labels PAF-LC and red labels PAF samples according to the measured Total S value and the criteria shown in Table 1.

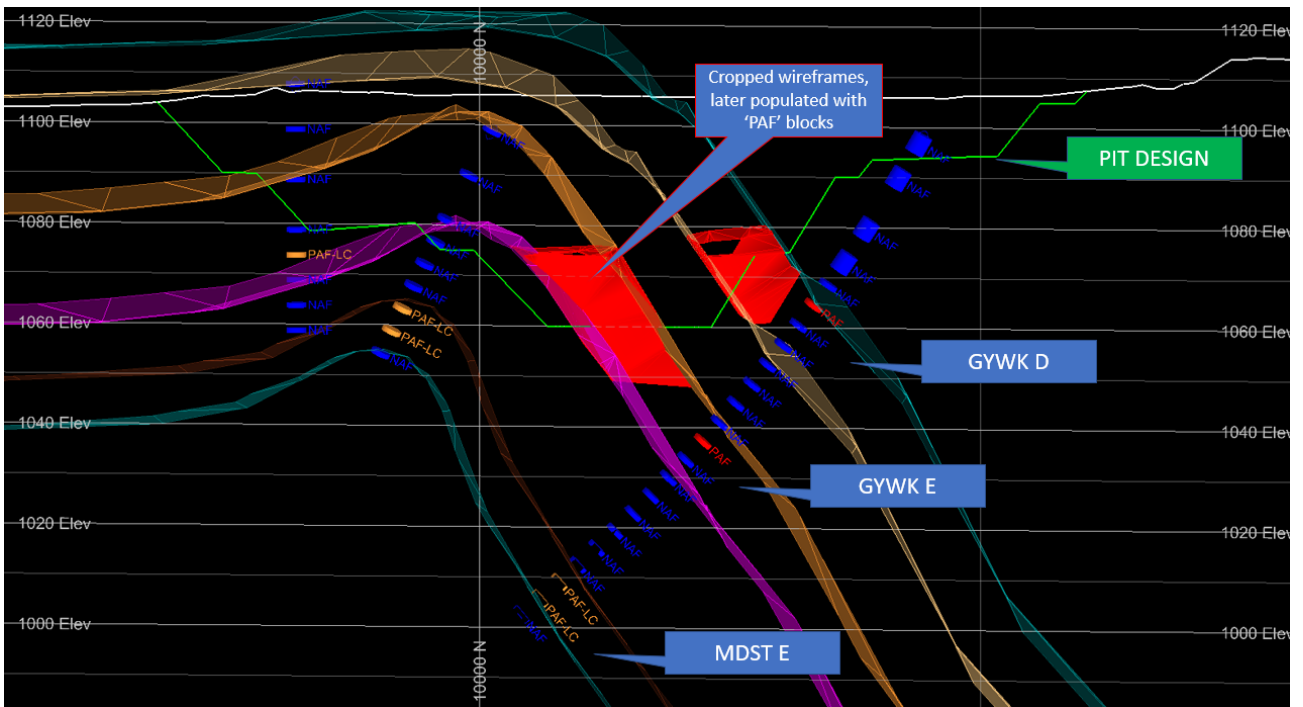


Figure 8: Section showing Total S assay results overlaying the pit shell (green line) and greywacke and mudstone stratigraphic units. Blue labels indicate NAF, orange labels PAF-LC and red labels PAF samples according to the measured Total S value and the criteria shown in Table 1.

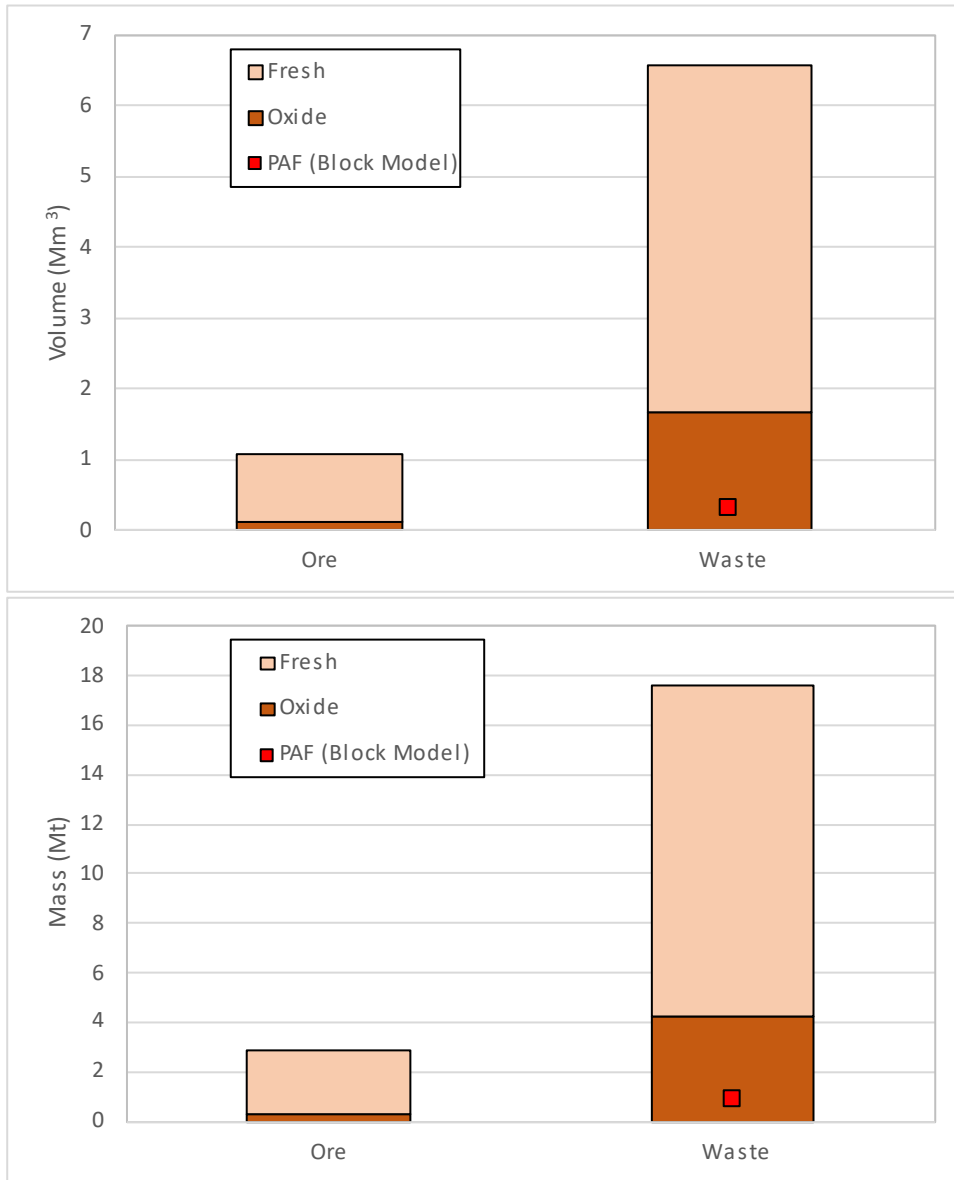


Figure 9: Volumes (top) and masses (bottom) of waste rock and ore split by oxidation. The red box represents the estimated volume or mass or PAF waste rock from the block model for sulphur described in the text.

Table 8 – Total S assay results for samples from drill holes around the Fountain Head pit.

WEATHERING	Sample ID	BHID	Depth_From	Depth_To	Average Depth	INT	Interval_Type	Sample_Type	Sample_Method	Sample Type (Waste/Ore)	Location (Inside/Outside proposed pit shell)	S (ppm)	As (ppm)	Au (ppm)	S (%)	Classification by Total S
Ox	C02386	FHRC101	7	11	9	4	COMP	RC	SPEAR	Waste	Inside	54	227	0.02	0.0054	NAF
Trans	190263	FHRC101	23	24	23.5	1	ORIG	RC	2TR	Waste	Inside	L	337	0.03	<0.002	NAF
Fresh	C02390	FHRC101	29	33	31	4	COMP	RC	SPEAR	Waste	Inside	175	47	0.005	0.0175	NAF
Fresh	190280	FHRC101	35	36	35.5	1	ORIG	RC	2TR	Waste	Inside	44	L	0.005	0.0044	NAF
Fresh	C02392	FHRC101	41	45	43	4	COMP	RC	SPEAR	Waste	Outside	114	L	0.005	0.0114	NAF
Ox	190299	FHRC102	9	10	9.5	1	ORIG	RC	2TR	Waste	Inside	L	255	0.05	<0.002	NAF
Ox	190312	FHRC102	19	20	19.5	1	ORIG	RC	2TR	Waste	Inside	41	204	0.25	0.0041	NAF
Fresh	190322	FHRC102	29	30	29.5	1	ORIG	RC	2TR	Waste	Inside	681	304	0.005	0.0681	NAF
Fresh	190329	FHRC102	34	35	34.5	1	ORIG	RC	2TR	Waste	Inside	107	338	0.005	0.0107	NAF
Fresh	C02397	FHRC102	39	43	41	4	COMP	RC	SPEAR	Waste	Inside	239	L	0.07	0.0239	NAF
Fresh	C02398	FHRC102	43	47	45	4	COMP	RC	SPEAR	Waste	Inside	213	25	0.005	0.0213	NAF
Fresh	190345	FHRC102	49	50	49.5	1	ORIG	RC	2TR	Waste	Inside	261	23	0.14	0.0261	NAF
Fresh	190350	FHRC102	54	55	54.5	1	ORIG	RC	2TR	Waste	Outside	318	L	0.005	0.0318	NAF
Fresh	C02402	FHRC102	57	61	59	4	COMP	RC	SPEAR	Waste	Outside	423	L	0.05	0.0423	NAF
Ox	190372	FHRC103	9	10	9.5	1	ORIG	RC	2TR	Waste	Inside	L	314	0.005	<0.002	NAF
Ox	190384	FHRC103	19	20	19.5	1	ORIG	RC	2TR	Waste	Inside	L	229	0.005	<0.002	NAF
Trans	190394	FHRC103	29	30	29.5	1	ORIG	RC	2TR	Waste	Outside	84	189	0.005	0.0084	NAF
Fresh	190399	FHRC103	34	35	34.5	1	ORIG	RC	2TR	Waste	Outside	2242	146	0.005	0.2242	PAF-LC
Fresh	C02408	FHRC103	39	43	41	4	COMP	RC	SPEAR	Waste	Outside	2483	107	0.07	0.2483	PAF-LC
Fresh	190412	FHRC103	44	45	44.5	1	ORIG	RC	2TR	Waste	Outside	348	24	0.005	0.0348	NAF
Fresh	190417	FHRC103	49	50	49.5	1	ORIG	RC	2TR	Waste	Outside	567	45	0.005	0.0567	NAF

Fresh	190422	FHRC103	54	55	54.5	1	ORIG	RC	2TR	Waste	Outside	126	24	0.03	0.0126	NAF
Fresh	190429	FHRC103	59	60	59.5	1	ORIG	RC	2TR	Waste	Outside	161	85	0.02	0.0161	NAF
Fresh	C02411	FHRC103	64	68	66	4	COMP	RC	SPEAR	Waste	Outside	512	24	0.01	0.0512	NAF
Fresh	190439	FHRC103	69	70	69.5	1	ORIG	RC	2TR	Waste	Outside	102	L	0.05	0.0102	NAF
Fresh	190445	FHRC103	74	75	74.5	1	ORIG	RC	2TR	Waste	Outside	71	L	0.09	0.0071	NAF
Fresh	C02412	FHRC103	76	80	78	4	COMP	RC	SPEAR	Waste	Outside	236	L	0.005	0.0236	NAF
Fresh	C02414	FHRC103	84	87	85.5	3	COMP	RC	SPEAR	Waste	Outside	255	41	0.08	0.0255	NAF
Ox	C02417	FHRC104	8	12	10	4	COMP	RC	SPEAR	Waste	Inside	41	128	0.04	0.0041	NAF
Ox	C02419	FHRC104	16	20	18	4	COMP	RC	SPEAR	Waste	Inside	27	389	0.07	0.0027	NAF
Trans	190492	FHRC104	29	30	29.5	1	ORIG	RC	2TR	Waste	Outside	80	420	0.14	0.008	NAF
Fresh	190497	FHRC104	34	35	34.5	1	ORIG	RC	2TR	Waste	Outside	1670	1287	0.02	0.167	NAF
Fresh	190504	FHRC104	39	40	39.5	1	ORIG	RC	2TR	Waste	Outside	871	1489	0.41	0.0871	NAF
Fresh	190509	FHRC104	44	45	44.5	1	ORIG	RC	2TR	Waste	Outside	178	75	0.005	0.0178	NAF
Fresh	190515	FHRC104	49	50	49.5	1	ORIG	RC	2TR	Ore	Outside	3163	202	0.02	0.3163	PAF-LC
Fresh	C02420	FHRC104	53	57	55	4	COMP	RC	SPEAR	Ore	Outside	3858	164	0.3	0.3858	PAF-LC
Fresh	C02421	FHRC104	57	61	59	4	COMP	RC	SPEAR	Waste	Outside	778	79	0.005	0.0778	NAF
Fresh	C02422	FHRC104	61	65	63	4	COMP	RC	SPEAR	Waste	Outside	861	21	0.03	0.0861	NAF
Fresh	190537	FHRC104	69	70	69.5	1	ORIG	RC	2TR	Waste	Outside	533	28	0.005	0.0533	NAF
Fresh	190543	FHRC104	74	75	74.5	1	ORIG	RC	2TR	Waste	Outside	605	66	0.01	0.0605	NAF
Fresh	190548	FHRC104	79	80	79.5	1	ORIG	RC	2TR	Waste	Outside	899	907	0.005	0.0899	NAF
Ox	191004	FHRC108	9	10	9.5	1	ORIG	RC	2TR	Waste	Inside	L	38	0.12	<0.002	NAF
Ox	191015	FHRC108	19	20	19.5	1	ORIG	RC	2TR	Waste	Inside	228	1426	0.25	0.0228	NAF
Trans	191027	FHRC108	29	30	29.5	1	ORIG	RC	2TR	Waste	Inside	23	22	0.11	0.0023	NAF
Trans	191037	FHRC108	39	40	39.5	1	ORIG	RC	2TR	Waste	Inside	1592	105	0.04	0.1592	NAF
Fresh	C02495	FHRC108	41	45	43	4	COMP	RC	SPEAR	Waste	Inside	326	397	0.05	0.0326	NAF
Fresh	C02497	FHRC108	49	53	51	4	COMP	RC	SPEAR	Waste	Inside	92	L	0.005	0.0092	NAF
Fresh	C02498	FHRC108	53	57	55	4	COMP	RC	SPEAR	Waste	Inside	153	L	0.005	0.0153	NAF
Fresh	C02499	FHRC108	57	61	59	4	COMP	RC	SPEAR	Waste	Inside	235	L	0.005	0.0235	NAF
Fresh	C02503	FHRC108	64	67	65.5	3	COMP	RC	SPEAR	Waste	Inside	237	L	0.005	0.0237	NAF
Fresh	191071	FHRC108	69	70	69.5	1	ORIG	RC	2TR	Waste	Outside	270	L	0.01	0.027	NAF

Fresh	191078	FHRC108	74	75	74.5	1	ORIG	RC	2TR	Ore	Outside	1553	2013	0.07	0.1553	NAF
Fresh	191083	FHRC108	79	80	79.5	1	ORIG	RC	2TR	Ore	Outside	4824	8016	0.1	0.4824	PAF
Fresh	191088	FHRC108	84	85	84.5	1	ORIG	RC	2TR	Ore	Outside	11730	166	1.07	1.173	PAF
Fresh	191093	FHRC108	89	90	89.5	1	ORIG	RC	2TR	Ore	Outside	17178	189	0.07	1.7178	PAF
Fresh	191098	FHRC108	94	95	94.5	1	ORIG	RC	2TR	Ore	Outside	1595	3338	0.38	0.1595	NAF
Fresh	191105	FHRC108	99	100	99.5	1	ORIG	RC	2TR	Ore	Outside	665	534	4.61	0.0665	NAF
Fresh	191111	FHRC108	104	105	104.5	1	ORIG	RC	2TR	Ore	Outside	59784	2584	2.06	5.9784	PAF
Fresh	191116	FHRC108	109	110	109.5	1	ORIG	RC	2TR	Ore	Outside	3243	3382	0.09	0.3243	PAF-LC
Fresh	191121	FHRC108	114	115	114.5	1	ORIG	RC	2TR	Waste	Outside	90	L	0.04	0.009	NAF
Fresh	191128	FHRC108	119	120	119.5	1	ORIG	RC	2TR	Waste	Outside	271	45	0.13	0.0271	NAF
Fresh	191133	FHRC108	124	125	124.5	1	ORIG	RC	2TR	Ore	Outside	2707	6324	0.99	0.2707	PAF-LC
Fresh	191138	FHRC108	129	130	129.5	1	ORIG	RC	2TR	Waste	Outside	135	L	0.07	0.0135	NAF
Trans	C02527	FHRC110	9	13	11	4	COMP	RC	SPEAR	Waste	Inside	23	81	0.07	0.0023	NAF
Trans	C02529	FHRC110	17	21	19	4	COMP	RC	SPEAR	Waste	Outside	22	71	0.03	0.0022	NAF
Trans	C02532	FHRC110	29	33	31	4	COMP	RC	SPEAR	Waste	Outside	385	28	0.05	0.0385	NAF
Fresh	C02534	FHRC110	37	41	39	4	COMP	RC	SPEAR	Waste	Outside	984	L	0.005	0.0984	NAF
Fresh	191319	FHRC110	44	45	44.5	1	ORIG	RC	2TR	Ore	Outside	1714	46	0.14	0.1714	NAF
Fresh	191324	FHRC110	49	50	49.5	1	ORIG	RC	2TR	Ore	Outside	5458	11184	2.06	0.5458	PAF
Fresh	191331	FHRC110	54	55	54.5	1	ORIG	RC	2TR	Ore	Outside	1219	231	0.23	0.1219	NAF
Fresh	191336	FHRC110	59	60	59.5	1	ORIG	RC	2TR	Waste	Outside	638	267	0.09	0.0638	NAF
Fresh	191342	FHRC110	64	65	64.5	1	ORIG	RC	2TR	Waste	Outside	1075	1123	0.09	0.1075	NAF
Fresh	191347	FHRC110	69	70	69.5	1	ORIG	RC	2TR	Waste	Outside	791	626	0.1	0.0791	NAF
Fresh	191354	FHRC110	74	75	74.5	1	ORIG	RC	2TR	Waste	Outside	1901	67	0.09	0.1901	NAF
Fresh	191359	FHRC110	79	80	79.5	1	ORIG	RC	2TR	Waste	Outside	253	33	0.04	0.0253	NAF
Fresh	191364	FHRC110	84	85	84.5	1	ORIG	RC	2TR	Waste	Outside	17292	289	0.16	1.7292	PAF
Fresh	191369	FHRC110	89	90	89.5	1	ORIG	RC	2TR	Waste	Outside	771	183	0.15	0.0771	NAF
Fresh	191377	FHRC110	94	95	94.5	1	ORIG	RC	2TR	Waste	Outside	692	66	0.34	0.0692	NAF
Fresh	191382	FHRC110	99	100	99.5	1	ORIG	RC	2TR	Waste	Outside	429	76	0.03	0.0429	NAF
Fresh	191387	FHRC110	104	105	104.5	1	ORIG	RC	2TR	Waste	Outside	209	16	0.02	0.0209	NAF
Fresh	191392	FHRC110	109	110	109.5	1	ORIG	RC	2TR	Waste	Outside	266	53	0.06	0.0266	NAF

Fresh	191397	FHRC110	114	115	114.5	1	ORIG	RC	2TR	Waste	Outside	211	36	0.05	0.0211	NAF
Fresh	191404	FHRC110	119	120	119.5	1	ORIG	RC	2TR	Ore	Outside	1993	377	0.03	0.1993	NAF
Fresh	191409	FHRC110	124	125	124.5	1	ORIG	RC	2TR	Ore	Outside	2527	2041	0.28	0.2527	PAF-LC
Fresh	191415	FHRC110	129	130	129.5	1	ORIG	RC	2TR	Ore	Outside	2605	36	0.56	0.2605	PAF-LC
Fresh	191420	FHRC110	134	135	134.5	1	ORIG	RC	2TR	Waste	Outside	678	125	0.16	0.0678	NAF
Ox	191436	FHRC111	10	11	10.5	1	ORIG	RC	2TR	Waste	Inside	49	2334	0.32	0.0049	NAF
Trans	191445	FHRC111	18	19	18.5	1	ORIG	RC	2TR	Waste	Inside	25	245	0.06	0.0025	NAF
Trans	C02539	FHRC111	28	31	29.5	3	COMP	RC	SPEAR	Waste	Outside	341	149	0.03	0.0341	NAF
Fresh	191468	FHRC111	39	40	39.5	1	ORIG	RC	SPEAR	Waste	Outside	450	90	0.06	0.045	NAF
Fresh	191474	FHRC111	44	45	44.5	1	ORIG	RC	2TR	Ore	Outside	163	L	0.09	0.0163	NAF
Fresh	191481	FHRC111	49	50	49.5	1	ORIG	RC	2TR	Ore	Outside	2747	456	0.02	0.2747	PAF-LC
Fresh	191486	FHRC111	54	55	54.5	1	ORIG	RC	2TR	Waste	Outside	402	154	0.1	0.0402	NAF
Fresh	191491	FHRC111	59	60	59.5	1	ORIG	RC	2TR	Waste	Outside	3238	5227	0.17	0.3238	PAF-LC
Fresh	191496	FHRC111	64	65	64.5	1	ORIG	RC	2TR	Waste	Outside	4108	166	0.44	0.4108	PAF
Fresh	191503	FHRC111	69	70	69.5	1	ORIG	RC	2TR	Waste	Outside	396	354	0.1	0.0396	NAF
Fresh	191508	FHRC111	74	75	74.5	1	ORIG	RC	2TR	Waste	Outside	175	11	0.09	0.0175	NAF
Fresh	191514	FHRC111	79	80	79.5	1	ORIG	RC	2TR	Waste	Outside	851	L	0.16	0.0851	NAF
Fresh	191519	FHRC111	84	85	84.5	1	ORIG	RC	2TR	Waste	Outside	59	L	0.08	0.0059	NAF
Fresh	191524	FHRC111	89	90	89.5	1	ORIG	RC	2TR	Waste	Outside	1767	582	0.24	0.1767	NAF
Ox	191536	FHRC112	9	10	9.5	1	ORIG	RC	2TR	Waste	Inside	L	19	0.1	<0.002	NAF
Trans	C02543	FHRC112	19	23	21	4	COMP	RC	SPEAR	Waste	Inside	38	63	0.02	0.0038	NAF
Trans	191559	FHRC112	29	30	29.5	1	ORIG	RC	2TR	Waste	Inside	L	314	0.03	<0.002	NAF
Fresh	191564	FHRC112	34	35	34.5	1	ORIG	RC	2TR	Waste	Inside	342	47	0.005	0.0342	NAF
Fresh	191569	FHRC112	39	40	39.5	1	ORIG	RC	2TR	Waste	Inside	1862	28	0.005	0.1862	NAF
Fresh	191577	FHRC112	44	45	44.5	1	ORIG	RC	2TR	Waste	Inside	356	23	0.005	0.0356	NAF
Fresh	C02545	FHRC112	49	54	51.5	5	COMP	RC	SPEAR	Waste	Outside	1024	23	0.07	0.1024	NAF
Ox	C02555	FHRC115	6	10	8	4	COMP	RC	SPEAR	Waste	Inside	L	236	0.13	<0.002	NAF
Trans	C02558	FHRC115	17	20	18.5	3	COMP	RC	SPEAR	Waste	Inside	L	200	0.04	<0.002	NAF
Trans	191745	FHRC115	24	25	24.5	1	ORIG	RC	CONE	Waste	Inside	L	94	0.12	<0.002	NAF
Trans	191752	FHRC115	29	30	29.5	1	ORIG	RC	CONE	Waste	Inside	55	10	0.09	0.0055	NAF

Fresh	191757	FHRC115	34	35	34.5	1	ORIG	RC	CONE	Waste	Outside	318	13	0.18	0.0318	NAF
Fresh	191762	FHRC115	39	40	39.5	1	ORIG	RC	CONE	Waste	Outside	3139	L	0.23	0.3139	PAF-LC
Fresh	191767	FHRC115	44	45	44.5	1	ORIG	RC	CONE	Waste	Outside	1924	25	1.07	0.1924	NAF
Ox	191784	FHRC116	9	10	9.5	1	ORIG	RC	CONE	Waste	Inside	62	847	0.05	0.0062	NAF
Trans	191794	FHRC116	19	20	19.5	1	ORIG	RC	CONE	Ore	Inside	53	1606	0.17	0.0053	NAF
Trans	191805	FHRC116	29	30	29.5	1	ORIG	RC	CONE	Waste	Inside	119	220	0.21	0.0119	NAF
Fresh	191811	FHRC116	34	35	34.5	1	ORIG	RC	CONE	Waste	Inside	131	L	0.07	0.0131	NAF
Fresh	191816	FHRC116	39	40	39.5	1	ORIG	RC	CONE	Waste	Outside	921	564	0.09	0.0921	NAF
Fresh	191821	FHRC116	44	45	44.5	1	ORIG	RC	CONE	Waste	Outside	1042	27	0.28	0.1042	NAF
Fresh	191828	FHRC116	49	50	49.5	1	ORIG	RC	CONE	Waste	Outside	3615	399	0.01	0.3615	PAF-LC
Fresh	191833	FHRC116	54	55	54.5	1	ORIG	RC	CONE	Waste	Outside	2432	2063	0.1	0.2432	PAF-LC
Fresh	191838	FHRC116	59	60	59.5	1	ORIG	RC	CONE	Waste	Outside	832	487	0.11	0.0832	NAF
Ox	C02562	FHRC117	8	12	10	4	COMP	RC	SPEAR	Waste	Inside	L	51	0.17	<0.002	NAF
Ox	C02565	FHRC117	21	24	22.5	3	COMP	RC	SPEAR	Waste	Inside	51	271	0.17	0.0051	NAF
Trans	C02567	FHRC117	31	35	33	4	COMP	RC	SPEAR	Waste	Inside	123	43	0.01	0.0123	NAF
Fresh	C02569	FHRC117	39	43	41	4	COMP	RC	SPEAR	Waste	Outside	430	L	0.04	0.043	NAF
Fresh	C02571	FHRC117	43	47	45	4	COMP	RC	SPEAR	Waste	Outside	1341	L	0.01	0.1341	NAF
Fresh	C02572	FHRC117	47	51	49	4	COMP	RC	SPEAR	Waste	Outside	613	L	0.06	0.0613	NAF
Fresh	C02573	FHRC117	51	55	53	4	COMP	RC	SPEAR	Waste	Outside	368	L	0.05	0.0368	NAF
Fresh	C02577	FHRC117	59	63	61	4	COMP	RC	SPEAR	Waste	Outside	555	30	0.01	0.0555	NAF
Fresh	C02578	FHRC117	63	67	65	4	COMP	RC	SPEAR	Waste	Outside	969	515	0.02	0.0969	NAF
Fresh	C02579	FHRC117	67	71	69	4	COMP	RC	SPEAR	Waste	Outside	905	298	0.005	0.0905	NAF
Fresh	C02580	FHRC117	71	75	73	4	COMP	RC	SPEAR	Waste	Outside	28	L	0.1	0.0028	NAF
Fresh	C02582	FHRC117	79	83	81	4	COMP	RC	SPEAR	Waste	Outside	47	L	0.03	0.0047	NAF
Fresh	C02583	FHRC117	83	86	84.5	3	COMP	RC	SPEAR	Waste	Outside	27	L	0.02	0.0027	NAF
Fresh	C02584	FHRC117	86	90	88	4	COMP	RC	SPEAR	Waste	Outside	92	L	0.02	0.0092	NAF
Fresh	C02586	FHRC117	94	98	96	4	COMP	RC	SPEAR	Ore	Outside	709	L	0.03	0.0709	NAF
Fresh	C02587	FHRC117	98	102	100	4	COMP	RC	SPEAR	Ore	Outside	291	L	0.02	0.0291	NAF
Fresh	C02588	FHRC117	102	106	104	4	COMP	RC	SPEAR	Ore	Outside	1036	L	0.01	0.1036	NAF
Fresh	C02589	FHRC117	106	110	108	4	COMP	RC	SPEAR	Ore	Outside	38	L	0.01	0.0038	NAF

Fresh	191968	FHRC117	114	115	114.5	1	ORIG	RC	CONE	Ore	Outside	124	L	0.03	0.0124	NAF
Fresh	191974	FHRC117	119	120	119.5	1	ORIG	RC	CONE	Ore	Outside	227	L	0.01	0.0227	NAF
Fresh	191981	FHRC117	124	125	124.5	1	ORIG	RC	CONE	Ore	Outside	2873	53	0.01	0.2873	PAF-LC
Fresh	191986	FHRC117	129	130	129.5	1	ORIG	RC	CONE	Ore	Outside	302	L	0.13	0.0302	NAF
Fresh	191991	FHRC117	134	135	134.5	1	ORIG	RC	CONE	Ore	Outside	264	L	0.11	0.0264	NAF
Fresh	191996	FHRC117	139	140	139.5	1	ORIG	RC	CONE	Ore	Outside	5311	7020	1.14	0.5311	PAF
Fresh	192003	FHRC117	144	145	144.5	1	ORIG	RC	CONE	Waste	Outside	78	L	0.04	0.0078	NAF
Fresh	192008	FHRC117	149	150	149.5	1	ORIG	RC	CONE	Waste	Outside	186	L	0.11	0.0186	NAF
Fresh	192013	FHRC117	154	155	154.5	1	ORIG	RC	CONE	Waste	Outside	71	L	0.13	0.0071	NAF
Fresh	192018	FHRC117	159	160	159.5	1	ORIG	RC	CONE	Waste	Outside	512	44	0.01	0.0512	NAF
Fresh	192023	FHRC117	164	165	164.5	1	ORIG	RC	CONE	Waste	Outside	468	L	0.07	0.0468	NAF
Fresh	192030	FHRC117	169	170	169.5	1	ORIG	RC	CONE	Waste	Outside	456	L	0.01	0.0456	NAF
Fresh	192035	FHRC117	174	175	174.5	1	ORIG	RC	CONE	Waste	Outside	3175	L	0.8	0.3175	PAF-LC
Fresh	192041	FHRC117	179	180	179.5	1	ORIG	RC	CONE	Waste	Outside	673	L	0.005	0.0673	NAF
Fresh	192046	FHRC117	184	185	184.5	1	ORIG	RC	CONE	Waste	Outside	605	L	0.005	0.0605	NAF
Fresh	192053	FHRC117	189	190	189.5	1	ORIG	RC	CONE	Waste	Outside	1488	L	0.53	0.1488	NAF
Fresh	192058	FHRC117	194	195	194.5	1	ORIG	RC	CONE	Waste	Outside	195	L	0.005	0.0195	NAF
Fresh	192062	FHRC117	198	199	198.5	1	ORIG	RC	CONE	Waste	Outside	2444	13	0.005	0.2444	PAF-LC
Fresh	198503	FHDD181	144	144.5	144.25	0.5	ORIG	FCORE		Waste	Inside	339	L	0.09	0.0339	NAF
Fresh	198512	FHDD181	147.5	148	147.75	0.5	ORIG	FCORE		Waste	Inside	293	L	0.09	0.0293	NAF
Fresh	198513	FHDD181	157	157.5	157.25	0.5	ORIG	FCORE		Waste	Inside	213	L	0.11	0.0213	NAF
Fresh	198523	FHDD181	161.15	161.45	161.3	0.3	ORIG	FCORE		Ore	Inside	6618	110	0.49	0.6618	PAF
Fresh	198537	FHDD181	166.5	167	166.75	0.5	ORIG	FCORE		Ore	Inside	224	134	0.69	0.0224	NAF
Fresh	198545	FHDD181	169.5	170	169.75	0.5	ORIG	FCORE		Ore	Inside	1612	103	0.67	0.1612	NAF
Fresh	198561	FHDD181	175	175.5	175.25	0.5	ORIG	FCORE		Ore	Inside	3770	609	0.12	0.377	PAF-LC
Fresh	198575	FHDD181	180.25	180.65	180.45	0.4	ORIG	FCORE		Ore	Outside	665	200	0.22	0.0665	NAF
Fresh	198586	FHDD181	184.5	185	184.75	0.5	ORIG	FCORE		Ore	Outside	960	243	0.22	0.096	NAF
Fresh	198601	FHDD181	189.5	190	189.75	0.5	ORIG	FCORE		Waste	Outside	117	51	0.09	0.0117	NAF
Fresh	198605	FHDD181	191.5	192	191.75	0.5	ORIG	FCORE		Waste	Outside	165	L	0.09	0.0165	NAF
Ox	192578	FHRC127	0	1	0.5	1	ORIG	CHIPS	CONE	Waste	Inside	1352	190	0.087	0.1352	NAF

Ox	192587	FHRC127	9	10	9.5	1	ORIG	CHIPS	CONE	Ore	Inside	L	109	0.031	<0.002	NAF
Ox	192597	FHRC127	19	20	19.5	1	ORIG	CHIPS	CONE	Ore	Inside	28	427	0.038	0.0028	NAF
Trans	192608	FHRC127	28	29	28.5	1	ORIG	CHIPS	CONE	Ore	Inside	73	53	0.081	0.0073	NAF
Fresh	192615	FHRC127	34	35	34.5	1	ORIG	CHIPS	CONE	Waste	Inside	386	51	0.005	0.0386	NAF
Fresh	192620	FHRC127	39	40	39.5	1	ORIG	CHIPS	CONE	Waste	Outside	226	21	0.005	0.0226	NAF
Fresh	192627	FHRC127	44	45	44.5	1	ORIG	CHIPS	CONE	Waste	Outside	644	52	0.006	0.0644	NAF
Fresh	192632	FHRC127	49	50	49.5	1	ORIG	CHIPS	CONE	Waste	Outside	168	38	0.01	0.0168	NAF
Fresh	192637	FHRC127	54	55	54.5	1	ORIG	CHIPS	CONE	Waste	Outside	2307	42	0.015	0.2307	PAF-LC
Fresh	192643	FHRC127	59	60	59.5	1	ORIG	CHIPS	CONE	Waste	Outside	118	34	0.005	0.0118	NAF
Fresh	192648	FHRC127	64	65	64.5	1	ORIG	CHIPS	CONE	Waste	Outside	483	53	0.005	0.0483	NAF
Fresh	192655	FHRC127	69	70	69.5	1	ORIG	CHIPS	CONE	Waste	Outside	116	13	0.005	0.0116	NAF
Fresh	192660	FHRC127	74	75	74.5	1	ORIG	CHIPS	CONE	Waste	Outside	261	12	0.005	0.0261	NAF
Fresh	192665	FHRC127	79	80	79.5	1	ORIG	CHIPS	CONE	Waste	Outside	1011	37	0.013	0.1011	NAF
Ox	192678	FHRC128	9	10	9.5	1	ORIG	CHIPS	CONE	Waste	Inside	30	307	0.035	0.003	NAF
Ox	192688	FHRC128	19	20	19.5	1	ORIG	CHIPS	CONE	Waste	Inside	34	259	0.014	0.0034	NAF
Trans	192698	FHRC128	29	30	29.5	1	ORIG	CHIPS	CONE	Waste	Inside	39	167	0.01	0.0039	NAF
Fresh	192705	FHRC128	34	35	34.5	1	ORIG	CHIPS	CONE	Waste	Inside	238	46	0.006	0.0238	NAF
Fresh	192711	FHRC128	39	40	39.5	1	ORIG	CHIPS	CONE	Waste	Inside	1478	27	0.032	0.1478	NAF
Fresh	192716	FHRC128	44	45	44.5	1	ORIG	CHIPS	CONE	Waste	Outside	8399	949	0.015	0.8399	PAF
Fresh	192721	FHRC128	49	50	49.5	1	ORIG	CHIPS	CONE	Waste	Outside	909	225	0.064	0.0909	NAF
Fresh	192728	FHRC128	54	55	54.5	1	ORIG	CHIPS	CONE	Waste	Outside	1640	1111	0.454	0.164	NAF
Fresh	192733	FHRC128	59	60	59.5	1	ORIG	CHIPS	CONE	Waste	Outside	1264	192	0.058	0.1264	NAF
Fresh	192738	FHRC128	64	65	64.5	1	ORIG	CHIPS	CONE	Waste	Outside	1459	69	0.017	0.1459	NAF
Fresh	192744	FHRC128	69	70	69.5	1	ORIG	CHIPS	CONE	Waste	Outside	800	92	0.233	0.08	NAF
Fresh	192749	FHRC128	74	75	74.5	1	ORIG	CHIPS	CONE	Waste	Outside	329	33	0.077	0.0329	NAF
Fresh	192756	FHRC128	79	80	79.5	1	ORIG	CHIPS	CONE	Waste	Outside	494	39	0.011	0.0494	NAF
Ox	192932	FHRC130	0	1	0.5	1	ORIG	CHIPS	CONE	Waste	Inside	764	455	0.151	0.0764	NAF
Ox	192942	FHRC130	9	10	9.5	1	ORIG	CHIPS	CONE	Waste	Inside	36	543	0.32	0.0036	NAF
Ox	192954	FHRC130	19	20	19.5	1	ORIG	CHIPS	CONE	Waste	Inside	155	1161	0.765	0.0155	NAF

Ox	192966	FHRC130	29	30	29.5	1	ORIG	CHIPS	CONE	Waste	Inside	136	121	0.02	0.0136	NAF
Trans	192974	FHRC130	36	37	36.5	1	ORIG	CHIPS	CONE	Waste	Inside	601	59	0.005	0.0601	NAF
Fresh	192979	FHRC130	39	40	39.5	1	ORIG	CHIPS	CONE	Waste	Inside	1145	120	0.015	0.1145	NAF
Fresh	192984	FHRC130	44	45	44.5	1	ORIG	CHIPS	CONE	Ore	Outside	605	55	0.161	0.0605	NAF
Fresh	192989	FHRC130	49	50	49.5	1	ORIG	CHIPS	CONE	Ore	Outside	1830	360	0.239	0.183	NAF
Fresh	192994	FHRC130	54	55	54.5	1	ORIG	CHIPS	CONE	Waste	Outside	4073	280	0.028	0.4073	PAF
Fresh	192999	FHRC130	59	60	59.5	1	ORIG	CHIPS	CONE	Waste	Outside	3559	110	0.005	0.3559	PAF-LC
Fresh	193006	FHRC130	64	65	64.5	1	ORIG	CHIPS	CONE	Waste	Outside	2123	37	0.014	0.2123	PAF-LC
Fresh	193012	FHRC130	69	70	69.5	1	ORIG	CHIPS	CONE	Waste	Outside	529	L	0.005	0.0529	NAF
Fresh	193017	FHRC130	74	75	74.5	1	ORIG	CHIPS	CONE	Waste	Outside	963	38	0.005	0.0963	NAF
Fresh	193022	FHRC130	79	80	79.5	1	ORIG	CHIPS	CONE	Waste	Outside	685	38	0.011	0.0685	NAF
Fresh	193029	FHRC130	84	85	84.5	1	ORIG	CHIPS	CONE	Waste	Outside	403	L	0.006	0.0403	NAF
Fresh	193034	FHRC130	89	90	89.5	1	ORIG	CHIPS	CONE	Waste	Outside	704	73	0.017	0.0704	NAF
Ox	193036	FHRC131	0	1	0.5	1	ORIG	CHIPS	CONE	Waste	Outside	3062	2210	0.064	0.3062	PAF-LC
Ox	193046	FHRC131	9	10	9.5	1	ORIG	CHIPS	CONE	Waste	Outside	73	192	0.052	0.0073	NAF
Ox	193058	FHRC131	19	20	19.5	1	ORIG	CHIPS	CONE	Waste	Outside	62	259	0.005	0.0062	NAF
Ox	193068	FHRC131	29	30	29.5	1	ORIG	CHIPS	CONE	Waste	Outside	56	382	0.02	0.0056	NAF
Ox	193081	FHRC131	39	40	39.5	1	ORIG	CHIPS	CONE	Waste	Outside	300	466	0.028	0.03	NAF
Fresh	193086	FHRC131	44	45	44.5	1	ORIG	CHIPS	CONE	Waste	Outside	566	79	0.005	0.0566	NAF
Fresh	193091	FHRC131	49	50	49.5	1	ORIG	CHIPS	CONE	Waste	Outside	2952	76	0.017	0.2952	PAF-LC
Fresh	193096	FHRC131	54	55	54.5	1	ORIG	CHIPS	CONE	Waste	Outside	1770	97	0.185	0.177	NAF
Fresh	193103	FHRC131	59	60	59.5	1	ORIG	CHIPS	CONE	Waste	Outside	1474	120	0.011	0.1474	NAF
Fresh	193108	FHRC131	64	65	64.5	1	ORIG	CHIPS	CONE	Waste	Outside	705	32	0.024	0.0705	NAF
Fresh	193114	FHRC131	69	70	69.5	1	ORIG	CHIPS	CONE	Waste	Outside	3609	15	0.386	0.3609	PAF-LC
Fresh	193119	FHRC131	74	75	74.5	1	ORIG	CHIPS	CONE	Waste	Outside	1110	L	0.232	0.111	NAF
Fresh	193124	FHRC131	79	80	79.5	1	ORIG	CHIPS	CONE	Waste	Outside	2745	195	0.574	0.2745	PAF-LC
Fresh	193131	FHRC131	84	85	84.5	1	ORIG	CHIPS	CONE	Waste	Outside	536	62	0.034	0.0536	NAF
Fresh	193136	FHRC131	89	90	89.5	1	ORIG	CHIPS	CONE	Waste	Outside	821	L	0.065	0.0821	NAF
Ox	193147	FHRC132	9	10	9.5	1	ORIG	CHIPS	CONE	Waste	Inside	41	287	0.024	0.0041	NAF

Ox	193159	FHRC132	19	20	19.5	1	ORIG	CHIPS	CONE	Ore	Inside	44	412	0.039	0.0044	NAF
Trans	193169	FHRC132	29	30	29.5	1	ORIG	CHIPS	CONE	Waste	Inside	892	275	0.04	0.0892	NAF
Fresh	193177	FHRC132	34	35	34.5	1	ORIG	CHIPS	CONE	Waste	Inside	121	10	0.015	0.0121	NAF
Fresh	193182	FHRC132	39	40	39.5	1	ORIG	CHIPS	CONE	Waste	Inside	1908	27	0.173	0.1908	NAF
Fresh	193187	FHRC132	44	45	44.5	1	ORIG	CHIPS	CONE	Waste	Inside	1275	157	0.012	0.1275	NAF
Fresh	193192	FHRC132	49	50	49.5	1	ORIG	CHIPS	CONE	Waste	Inside	336	15	0.005	0.0336	NAF
Fresh	193197	FHRC132	54	55	54.5	1	ORIG	CHIPS	CONE	Waste	Outside	1986	420	1.098	0.1986	NAF
Fresh	193204	FHRC132	59	60	59.5	1	ORIG	CHIPS	CONE	Waste	Outside	546	31	0.02	0.0546	NAF
Fresh	193209	FHRC132	64	65	64.5	1	ORIG	CHIPS	CONE	Waste	Outside	626	L	0.035	0.0626	NAF
Fresh	193215	FHRC132	69	70	69.5	1	ORIG	CHIPS	CONE	Waste	Outside	2739	373	0.02	0.2739	PAF-LC
Fresh	193220	FHRC132	74	75	74.5	1	ORIG	CHIPS	CONE	Waste	Outside	583	L	0.005	0.0583	NAF
Fresh	193227	FHRC132	79	80	79.5	1	ORIG	CHIPS	CONE	Waste	Outside	849	142	0.009	0.0849	NAF
Fresh	193232	FHRC132	84	85	84.5	1	ORIG	CHIPS	CONE	Waste	Outside	170	L	0.005	0.017	NAF
Ox	193233	FHRC133	0	1	0.5	1	ORIG	CHIPS	CONE	Waste	Inside	848	1039	0.047	0.0848	NAF
Ox	193243	FHRC133	9	10	9.5	1	ORIG	CHIPS	CONE	Waste	Inside	35	260	0.025	0.0035	NAF
Ox	193255	FHRC133	19	20	19.5	1	ORIG	CHIPS	CONE	Waste	Inside	34	456	0.034	0.0034	NAF
Ox	193265	FHRC133	29	30	29.5	1	ORIG	CHIPS	CONE	Waste	Inside	111	412	0.016	0.0111	NAF
Fresh	193278	FHRC133	39	40	39.5	1	ORIG	CHIPS	CONE	Waste	Inside	524	15	0.011	0.0524	NAF
Fresh	193283	FHRC133	44	45	44.5	1	ORIG	CHIPS	CONE	Ore	Inside	1667	197	0.063	0.1667	NAF
Fresh	193288	FHRC133	49	50	49.5	1	ORIG	CHIPS	CONE	Ore	Outside	969	93	0.006	0.0969	NAF
Fresh	193293	FHRC133	54	55	54.5	1	ORIG	CHIPS	CONE	Ore	Outside	1281	73	0.205	0.1281	NAF
Fresh	193298	FHRC133	59	60	59.5	1	ORIG	CHIPS	CONE	Waste	Outside	481	39	0.007	0.0481	NAF
Fresh	193305	FHRC133	64	65	64.5	1	ORIG	CHIPS	CONE	Waste	Outside	1009	103	0.005	0.1009	NAF
Fresh	193311	FHRC133	69	70	69.5	1	ORIG	CHIPS	CONE	Waste	Outside	465	144	0.01	0.0465	NAF
Fresh	193316	FHRC133	74	75	74.5	1	ORIG	CHIPS	CONE	Waste	Outside	546	34	0.005	0.0546	NAF
Fresh	193321	FHRC133	79	80	79.5	1	ORIG	CHIPS	CONE	Waste	Outside	1055	48	0.081	0.1055	NAF
Fresh	193328	FHRC133	84	85	84.5	1	ORIG	CHIPS	CONE	Waste	Outside	1554	96	0.012	0.1554	NAF
Fresh	193333	FHRC133	89	90	89.5	1	ORIG	CHIPS	CONE	Waste	Outside	1160	55	0.07	0.116	NAF
Fresh	193338	FHRC133	94	95	94.5	1	ORIG	CHIPS	CONE	Waste	Outside	408	97	0.005	0.0408	NAF

Ox	193931	FHRC139	9	10	9.5	1	ORIG	CHIPS	CONE	Waste	Outside	39	37	0.005	0.0039	NAF
Ox	193942	FHRC139	19	20	19.5	1	ORIG	CHIPS	CONE	Waste	Outside	34	53	0.043	0.0034	NAF
Trans	193954	FHRC139	29	30	29.5	1	ORIG	CHIPS	CONE	Waste	Outside	83	154	0.043	0.0083	NAF
Fresh	193964	FHRC139	39	40	39.5	1	ORIG	CHIPS	CONE	Ore	Outside	459	163	0.015	0.0459	NAF
Fresh	193969	FHRC139	44	45	44.5	1	ORIG	CHIPS	CONE	Ore	Outside	9628	1981	0.111	0.9628	PAF
Fresh	193977	FHRC139	49	50	49.5	1	ORIG	CHIPS	CONE	Waste	Outside	661	112	0.006	0.0661	NAF
Fresh	193982	FHRC139	54	55	54.5	1	ORIG	CHIPS	CONE	Waste	Outside	1234	150	0.008	0.1234	NAF
Fresh	193987	FHRC139	59	60	59.5	1	ORIG	CHIPS	CONE	Waste	Outside	381	L	0.005	0.0381	NAF
Fresh	193992	FHRC139	64	65	64.5	1	ORIG	CHIPS	CONE	Waste	Outside	546	26	0.005	0.0546	NAF
Fresh	193997	FHRC139	69	70	69.5	1	ORIG	CHIPS	CONE	Waste	Outside	645	94	0.005	0.0645	NAF
Fresh	194004	FHRC139	74	75	74.5	1	ORIG	CHIPS	CONE	Ore	Outside	19957	156	0.728	1.9957	PAF
Fresh	194009	FHRC139	79	80	79.5	1	ORIG	CHIPS	CONE	Waste	Outside	682	38	0.011	0.0682	NAF
Fresh	194015	FHRC139	84	85	84.5	1	ORIG	CHIPS	CONE	Waste	Outside	1392	32	0.036	0.1392	NAF
Fresh	194020	FHRC139	89	90	89.5	1	ORIG	CHIPS	CONE	Waste	Outside	706	L	0.005	0.0706	NAF
Fresh	194027	FHRC139	94	95	94.5	1	ORIG	CHIPS	CONE	Waste	Outside	1314	13	0.005	0.1314	NAF
Fresh	194032	FHRC139	99	100	99.5	1	ORIG	CHIPS	CONE	Waste	Outside	866	54	0.165	0.0866	NAF
Fresh	194037	FHRC139	104	105	104.5	1	ORIG	CHIPS	CONE	Waste	Outside	317	12	0.005	0.0317	NAF
Fresh	194043	FHRC139	109	110	109.5	1	ORIG	CHIPS	CONE	Waste	Outside	243	L	0.039	0.0243	NAF
Ox	194044	FHRC140	0	1	0.5	1	ORIG	CHIPS	CONE	Waste	Outside	688	638	0.396	0.0688	NAF
Ox	194055	FHRC140	9	10	9.5	1	ORIG	CHIPS	CONE	Waste	Outside	43	L	0.074	0.0043	NAF
Ox	194065	FHRC140	19	20	19.5	1	ORIG	CHIPS	CONE	Waste	Outside	41	82	0.005	0.0041	NAF
Ox	194078	FHRC140	29	30	29.5	1	ORIG	CHIPS	CONE	Waste	Outside	278	130	0.012	0.0278	NAF
Fresh	194083	FHRC140	34	35	34.5	1	ORIG	CHIPS	CONE	Ore	Outside	717	372	0.005	0.0717	NAF
Fresh	194088	FHRC140	39	40	39.5	1	ORIG	CHIPS	CONE	Ore	Outside	1939	105	0.013	0.1939	NAF
Fresh	194093	FHRC140	44	45	44.5	1	ORIG	CHIPS	CONE	Ore	Outside	24101	23051	0.631	2.4101	PAF
Fresh	194098	FHRC140	49	50	49.5	1	ORIG	CHIPS	CONE	Ore	Outside	8499	697	0.048	0.8499	PAF
Fresh	194105	FHRC140	54	55	54.5	1	ORIG	CHIPS	CONE	Waste	Outside	1308	496	0.024	0.1308	NAF
Fresh	194111	FHRC140	59	60	59.5	1	ORIG	CHIPS	CONE	Waste	Outside	727	L	0.009	0.0727	NAF
Fresh	194116	FHRC140	64	65	64.5	1	ORIG	CHIPS	CONE	Waste	Outside	420	13	0.015	0.042	NAF

Fresh	194121	FHRC140	69	70	69.5	1	ORIG	CHIPS	CONE	Waste	Outside	342	17	0.005	0.0342	NAF
Fresh	194128	FHRC140	74	75	74.5	1	ORIG	CHIPS	CONE	Waste	Outside	1415	164	0.017	0.1415	NAF
Fresh	194133	FHRC140	79	80	79.5	1	ORIG	CHIPS	CONE	Waste	Outside	1212	175	0.005	0.1212	NAF
Fresh	194138	FHRC140	84	85	84.5	1	ORIG	CHIPS	CONE	Waste	Outside	640	52	0.005	0.064	NAF
Fresh	194144	FHRC140	89	90	89.5	1	ORIG	CHIPS	CONE	Waste	Outside	3687	216	0.407	0.3687	PAF-LC
Fresh	194149	FHRC140	94	95	94.5	1	ORIG	CHIPS	CONE	Waste	Outside	657	84	0.037	0.0657	NAF
Fresh	194156	FHRC140	99	100	99.5	1	ORIG	CHIPS	CONE	Waste	Outside	566	155	0.048	0.0566	NAF
Fresh	194161	FHRC140	104	105	104.5	1	ORIG	CHIPS	CONE	Waste	Outside	788	68	0.288	0.0788	NAF
Fresh	194166	FHRC140	109	110	109.5	1	ORIG	CHIPS	CONE	Waste	Outside	2864	181	0.096	0.2864	PAF-LC
Fresh	194172	FHRC140	114	115	114.5	1	ORIG	CHIPS	CONE	Waste	Outside	1266	50	0.01	0.1266	NAF
Fresh	194179	FHRC140	119	120	119.5	1	ORIG	CHIPS	CONE	Waste	Outside	715	101	0.009	0.0715	NAF
Fresh	194184	FHRC140	124	125	124.5	1	ORIG	CHIPS	CONE	Waste	Outside	1996	23	0.012	0.1996	NAF
Fresh	194189	FHRC140	129	130	129.5	1	ORIG	CHIPS	CONE	Waste	Outside	2315	13	0.012	0.2315	PAF-LC
Ox	194414	FHRC143	0	1	0.5	1	ORIG	CHIPS	CONE	Waste	Inside	778	641	0.097	0.0778	NAF
Ox	194423	FHRC143	9	10	9.5	1	ORIG	CHIPS	CONE	Waste	Inside	125	53	0.037	0.0125	NAF
Ox	194435	FHRC143	19	20	19.5	1	ORIG	CHIPS	CONE	Waste	Inside	67	61	0.006	0.0067	NAF
Trans	194444	FHRC143	27	28	27.5	1	ORIG	CHIPS	CONE	Waste	Inside	161	L	0.005	0.0161	NAF
Fresh	194453	FHRC143	34	35	34.5	1	ORIG	CHIPS	CONE	Waste	Inside	306	19	0.005	0.0306	NAF
Fresh	194458	FHRC143	39	40	39.5	1	ORIG	CHIPS	CONE	Waste	Inside	2061	24	0.015	0.2061	PAF-LC
Fresh	194463	FHRC143	44	45	44.5	1	ORIG	CHIPS	CONE	Waste	Inside	413	L	0.005	0.0413	NAF
Fresh	194468	FHRC143	49	50	49.5	1	ORIG	CHIPS	CONE	Waste	Inside	135	L	0.005	0.0135	NAF
Fresh	194474	FHRC143	54	55	54.5	1	ORIG	CHIPS	CONE	Waste	Inside	183	L	0.005	0.0183	NAF
Fresh	194481	FHRC143	59	60	59.5	1	ORIG	CHIPS	CONE	Waste	Inside	1698	L	0.011	0.1698	NAF
Fresh	194486	FHRC143	64	65	64.5	1	ORIG	CHIPS	CONE	Waste	Inside	426	L	0.006	0.0426	NAF
Fresh	194491	FHRC143	69	70	69.5	1	ORIG	CHIPS	CONE	Waste	Inside	346	L	0.016	0.0346	NAF
Fresh	194496	FHRC143	74	75	74.5	1	ORIG	CHIPS	CONE	Waste	Outside	435	L	0.005	0.0435	NAF
Fresh	194503	FHRC143	79	80	79.5	1	ORIG	CHIPS	CONE	Waste	Outside	519	28	0.005	0.0519	NAF
Fresh	194508	FHRC143	84	85	84.5	1	ORIG	CHIPS	CONE	Waste	Outside	340	19	0.005	0.034	NAF
Fresh	194514	FHRC143	89	90	89.5	1	ORIG	CHIPS	CONE	Waste	Outside	309	L	0.005	0.0309	NAF

Fresh	194519	FHRC143	94	95	94.5	1	ORIG	CHIPS	CONE	Waste	Outside	160	L	0.005	0.016	NAF
Fresh	194524	FHRC143	99	100	99.5	1	ORIG	CHIPS	CONE	Waste	Outside	597	L	0.007	0.0597	NAF
Fresh	194531	FHRC143	104	105	104.5	1	ORIG	CHIPS	CONE	Ore	Outside	3298	19	7.534	0.3298	PAF-LC
Fresh	194536	FHRC143	109	110	109.5	1	ORIG	CHIPS	CONE	Ore	Outside	229	L	0.008	0.0229	NAF
Fresh	194542	FHRC143	114	115	114.5	1	ORIG	CHIPS	CONE	Ore	Outside	3102	216	0.731	0.3102	PAF-LC
Fresh	194547	FHRC143	119	120	119.5	1	ORIG	CHIPS	CONE	Ore	Outside	7553	11605	2.208	0.7553	PAF
Fresh	194554	FHRC143	124	125	124.5	1	ORIG	CHIPS	CONE	Waste	Outside	465	43	0.087	0.0465	NAF
Fresh	194559	FHRC143	129	130	129.5	1	ORIG	CHIPS	CONE	Waste	Outside	3086	1363	0.461	0.3086	PAF-LC
Fresh	194564	FHRC143	134	135	134.5	1	ORIG	CHIPS	CONE	Waste	Outside	3115	1400	0.005	0.3115	PAF-LC
Fresh	194569	FHRC143	139	140	139.5	1	ORIG	CHIPS	CONE	Waste	Outside	38	22	0.031	0.0038	NAF
Fresh	194575	FHRC143	144	145	144.5	1	ORIG	CHIPS	CONE	Waste	Outside	103	L	0.005	0.0103	NAF
Fresh	194581	FHRC143	149	150	149.5	1	ORIG	CHIPS	CONE	Waste	Outside	170	L	0.005	0.017	NAF
Fresh	194586	FHRC143	154	155	154.5	1	ORIG	CHIPS	CONE	Waste	Outside	73	L	0.005	0.0073	NAF
Fresh	194591	FHRC143	159	160	159.5	1	ORIG	CHIPS	CONE	Waste	Outside	1063	L	0.008	0.1063	NAF
Ox	194995	FHRC149	0	1	0.5	1	ORIG	CHIPS	CONE	Waste	Outside	2775	3080	0.135	0.2775	PAF-LC
Ox	195006	FHRC149	9	10	9.5	1	ORIG	CHIPS	CONE	Waste	Outside	66	206	0.01	0.0066	NAF
Ox	195017	FHRC149	19	20	19.5	1	ORIG	CHIPS	CONE	Waste	Outside	L	20	0.016	<0.002	NAF
Trans	195029	FHRC149	29	30	29.5	1	ORIG	CHIPS	CONE	Waste	Outside	66	L	0.005	0.0066	NAF
Fresh	195034	FHRC149	34	35	34.5	1	ORIG	CHIPS	CONE	Waste	Outside	1207	L	0.024	0.1207	NAF
Fresh	195039	FHRC149	39	40	39.5	1	ORIG	CHIPS	CONE	Waste	Outside	7168	239	0.03	0.7168	PAF
Fresh	195045	FHRC149	44	45	44.5	1	ORIG	CHIPS	CONE	Waste	Outside	854	L	0.192	0.0854	NAF
Fresh	195052	FHRC149	49	50	49.5	1	ORIG	CHIPS	CONE	Waste	Outside	773	26	0.171	0.0773	NAF
Fresh	195057	FHRC149	54	55	54.5	1	ORIG	CHIPS	CONE	Ore	Outside	10590	16504	15.143	1.059	PAF
Fresh	195062	FHRC149	59	60	59.5	1	ORIG	CHIPS	CONE	Ore	Outside	3985	1862	1.894	0.3985	PAF-LC
Fresh	195067	FHRC149	64	65	64.5	1	ORIG	CHIPS	CONE	Waste	Outside	2087	415	0.02	0.2087	PAF-LC
Fresh	195073	FHRC149	69	70	69.5	1	ORIG	CHIPS	CONE	Waste	Outside	728	70	0.011	0.0728	NAF
Fresh	195080	FHRC149	74	75	74.5	1	ORIG	CHIPS	CONE	Waste	Outside	913	36	0.026	0.0913	NAF
Fresh	195085	FHRC149	79	80	79.5	1	ORIG	CHIPS	CONE	Waste	Outside	370	21	0.005	0.037	NAF
Fresh	195090	FHRC149	84	85	84.5	1	ORIG	CHIPS	CONE	Ore	Outside	2870	106	0.235	0.287	PAF-LC
Fresh	195095	FHRC149	89	90	89.5	1	ORIG	CHIPS	CONE	Ore	Outside	4133	118	9.213	0.4133	PAF

Fresh	195102	FHRC149	94	95	94.5	1	ORIG	CHIPS	CONE	Waste	Outside	521	L	0.006	0.0521	NAF
Fresh	195107	FHRC149	99	100	99.5	1	ORIG	CHIPS	CONE	Waste	Outside	1249	L	0.008	0.1249	NAF
Fresh	195113	FHRC149	104	105	104.5	1	ORIG	CHIPS	CONE	Waste	Outside	726	48	0.012	0.0726	NAF
Fresh	195118	FHRC149	109	110	109.5	1	ORIG	CHIPS	CONE	Waste	Outside	397	L	0.013	0.0397	NAF
Fresh	195123	FHRC149	114	115	114.5	1	ORIG	CHIPS	CONE	Waste	Outside	433	L	0.005	0.0433	NAF
Fresh	195130	FHRC149	119	120	119.5	1	ORIG	CHIPS	CONE	Waste	Outside	1158	L	0.461	0.1158	NAF
Fresh	195135	FHRC149	124	125	124.5	1	ORIG	CHIPS	CONE	Waste	Outside	1219	L	0.067	0.1219	NAF
Fresh	195141	FHRC149	129	130	129.5	1	ORIG	CHIPS	CONE	Waste	Outside	2121	37	0.577	0.2121	PAF-LC
Fresh	195146	FHRC149	134	135	134.5	1	ORIG	CHIPS	CONE	Waste	Outside	2819	15	0.316	0.2819	PAF-LC
Fresh	195152	FHRC149	138	139	138.5	1	ORIG	CHIPS	CONE	Waste	Outside	651	41	0.008	0.0651	NAF
Ox	195502	FHRC152	0	1	0.5	1	ORIG	CHIPS	CONE	Waste	Inside	1988	348	0.128	0.1988	NAF
Ox	195512	FHRC152	9	10	9.5	1	ORIG	CHIPS	CONE	Waste	Inside	68	20	0.057	0.0068	NAF
Ox	195522	FHRC152	19	20	19.5	1	ORIG	CHIPS	CONE	Waste	Outside	44	113	0.005	0.0044	NAF
Trans	195533	FHRC152	29	30	29.5	1	ORIG	CHIPS	CONE	Waste	Outside	274	L	0.005	0.0274	NAF
Fresh	195538	FHRC152	34	35	34.5	1	ORIG	CHIPS	CONE	Waste	Outside	347	L	0.027	0.0347	NAF
Fresh	195544	FHRC152	39	40	39.5	1	ORIG	CHIPS	CONE	Waste	Outside	1977	L	0.013	0.1977	NAF
Fresh	195549	FHRC152	44	45	44.5	1	ORIG	CHIPS	CONE	Waste	Outside	267	L	0.005	0.0267	NAF
Fresh	195556	FHRC152	49	50	49.5	1	ORIG	CHIPS	CONE	Waste	Outside	141	L	0.015	0.0141	NAF
Fresh	195561	FHRC152	54	55	54.5	1	ORIG	CHIPS	CONE	Waste	Outside	426	L	0.008	0.0426	NAF
Fresh	195566	FHRC152	59	60	59.5	1	ORIG	CHIPS	CONE	Waste	Outside	142	L	0.012	0.0142	NAF
Fresh	195572	FHRC152	64	65	64.5	1	ORIG	CHIPS	CONE	Ore	Outside	985	L	0.01	0.0985	NAF
Fresh	195579	FHRC152	69	70	69.5	1	ORIG	CHIPS	CONE	Ore	Outside	842	10	0.211	0.0842	NAF
Fresh	195584	FHRC152	74	75	74.5	1	ORIG	CHIPS	CONE	Ore	Outside	10540	16687	6.007	1.054	PAF
Fresh	195589	FHRC152	79	80	79.5	1	ORIG	CHIPS	CONE	Ore	Outside	429	42	0.381	0.0429	NAF
Fresh	195594	FHRC152	84	85	84.5	1	ORIG	CHIPS	CONE	Ore	Outside	1691	497	0.391	0.1691	NAF
Fresh	195599	FHRC152	89	90	89.5	1	ORIG	CHIPS	CONE	Ore	Outside	941	265	28.012	0.0941	NAF
Fresh	195606	FHRC152	94	95	94.5	1	ORIG	CHIPS	CONE	Ore	Outside	687	66	0.158	0.0687	NAF
Fresh	195612	FHRC152	99	100	99.5	1	ORIG	CHIPS	CONE	Waste	Outside	220	L	0.025	0.022	NAF
Fresh	195617	FHRC152	104	105	104.5	1	ORIG	CHIPS	CONE	Waste	Outside	523	93	0.11	0.0523	NAF
Fresh	195622	FHRC152	109	110	109.5	1	ORIG	CHIPS	CONE	Ore	Outside	15225	946	0.446	1.5225	PAF

Fresh	195629	FHRC152	114	115	114.5	1	ORIG	CHIPS	CONE	Ore	Outside	8232	666	0.076	0.8232	PAF
Fresh	195634	FHRC152	119	120	119.5	1	ORIG	CHIPS	CONE	Waste	Outside	4703	60	0.303	0.4703	PAF
Fresh	195639	FHRC152	124	125	124.5	1	ORIG	CHIPS	CONE	Ore	Outside	5507	186	0.034	0.5507	PAF
Fresh	195655	FHRC152	129	130	129.5	1	ORIG	CHIPS	CONE	Ore	Outside	6222	166	4.34	0.6222	PAF
Fresh	195660	FHRC152	134	135	134.5	1	ORIG	CHIPS	CONE	Ore	Outside	2239	L	0.055	0.2239	PAF-LC
Fresh	195665	FHRC152	139	140	139.5	1	ORIG	CHIPS	CONE	Ore	Outside	1886	83	0.088	0.1886	NAF
Fresh	195671	FHRC152	144	145	144.5	1	ORIG	CHIPS	CONE	Waste	Outside	1540	213	0.154	0.154	NAF
Fresh	195678	FHRC152	149	150	149.5	1	ORIG	CHIPS	CONE	Waste	Outside	3791	436	0.214	0.3791	PAF-LC
Fresh	195683	FHRC152	154	155	154.5	1	ORIG	CHIPS	CONE	Waste	Outside	1428	L	0.085	0.1428	NAF
Fresh	195688	FHRC152	159	160	159.5	1	ORIG	CHIPS	CONE	Waste	Outside	1754	73	0.263	0.1754	NAF
Ox	196074	FHRC155	0	1	0.5	1	ORIG	CHIPS	CONE	Waste	Inside	546	600	0.023	0.0546	NAF
Ox	196085	FHRC155	9	10	9.5	1	ORIG	CHIPS	CONE	Waste	Inside	100	594	0.01	0.01	NAF
Fresh	196095	FHRC155	19	20	19.5	1	ORIG	CHIPS	CONE	Ore	Inside	688	99	0.144	0.0688	NAF
Fresh	196102	FHRC155	24	25	24.5	1	ORIG	CHIPS	CONE	Ore	Inside	1249	185	0.01	0.1249	NAF
Fresh	196107	FHRC155	29	30	29.5	1	ORIG	CHIPS	CONE	Ore	Inside	3738	226	0.012	0.3738	PAF-LC
Fresh	196113	FHRC155	34	35	34.5	1	ORIG	CHIPS	CONE	Waste	Inside	415	18	0.009	0.0415	NAF
Fresh	196118	FHRC155	39	40	39.5	1	ORIG	CHIPS	CONE	Waste	Inside	1478	153	0.009	0.1478	NAF
Fresh	196123	FHRC155	44	45	44.5	1	ORIG	CHIPS	CONE	Waste	Inside	285	24	0.005	0.0285	NAF
Fresh	196130	FHRC155	49	50	49.5	1	ORIG	CHIPS	CONE	Waste	Inside	710	37	0.009	0.071	NAF
Ox	196260	FHRC158	0	1	0.5	1	ORIG	CHIPS	CONE	Waste	Inside	163	605	0.093	0.0163	NAF
Ox	196269	FHRC158	9	10	9.5	1	ORIG	CHIPS	CONE	Waste	Inside	46	33	0.005	0.0046	NAF
Ox	196282	FHRC158	19	20	19.5	1	ORIG	CHIPS	CONE	Waste	Inside	137	345	0.008	0.0137	NAF
Trans	196292	FHRC158	29	30	29.5	1	ORIG	CHIPS	CONE	Waste	Inside	744	414	0.018	0.0744	NAF
Fresh	196297	FHRC158	34	35	34.5	1	ORIG	CHIPS	CONE	Waste	Outside	3905	2152	0.449	0.3905	PAF-LC
Fresh	196304	FHRC158	39	40	39.5	1	ORIG	CHIPS	CONE	Waste	Outside	782	109	0.023	0.0782	NAF
Fresh	196309	FHRC158	44	45	44.5	1	ORIG	CHIPS	CONE	Waste	Outside	1192	98	0.026	0.1192	NAF
Fresh	196315	FHRC158	49	50	49.5	1	ORIG	CHIPS	CONE	Waste	Outside	95	17	0.005	0.0095	NAF
Ox	196634	FHRC164	0	1	0.5	1	ORIG	CHIPS	CONE	Waste	Outside	272	896	0.197	0.0272	NAF
Ox	196644	FHRC164	9	10	9.5	1	ORIG	CHIPS	CONE	Waste	Outside	63	35	0.008	0.0063	NAF
Trans	196656	FHRC164	19	20	19.5	1	ORIG	CHIPS	CONE	Waste	Outside	62	14	0.005	0.0062	NAF

Fresh	196666	FHRC164	29	30	29.5	1	ORIG	CHIPS	CONE	Waste	Outside	113	L	0.058	0.0113	NAF
Fresh	196672	FHRC164	34	35	34.5	1	ORIG	CHIPS	CONE	Waste	Outside	207	L	0.005	0.0207	NAF
Fresh	196679	FHRC164	39	40	39.5	1	ORIG	CHIPS	CONE	Waste	Outside	1578	L	0.005	0.1578	NAF
Fresh	196684	FHRC164	44	45	44.5	1	ORIG	CHIPS	CONE	Waste	Outside	1543	199	0.005	0.1543	NAF
Fresh	196689	FHRC164	49	50	49.5	1	ORIG	CHIPS	CONE	Waste	Outside	666	L	0.005	0.0666	NAF
Fresh	196694	FHRC164	54	55	54.5	1	ORIG	CHIPS	CONE	Waste	Outside	297	30	0.005	0.0297	NAF
Fresh	196699	FHRC164	59	60	59.5	1	ORIG	CHIPS	CONE	Waste	Outside	1044	L	0.005	0.1044	NAF
Fresh	196706	FHRC164	64	65	64.5	1	ORIG	CHIPS	CONE	Waste	Outside	501	69	0.017	0.0501	NAF
Fresh	196712	FHRC164	69	70	69.5	1	ORIG	CHIPS	CONE	Waste	Outside	62	L	0.005	0.0062	NAF
Fresh	196717	FHRC164	74	75	74.5	1	ORIG	CHIPS	CONE	Waste	Outside	63	L	0.005	0.0063	NAF
Fresh	196722	FHRC164	79	80	79.5	1	ORIG	CHIPS	CONE	Waste	Outside	162	L	0.005	0.0162	NAF
Fresh	196729	FHRC164	84	85	84.5	1	ORIG	CHIPS	CONE	Waste	Outside	432	L	0.008	0.0432	NAF
Fresh	196734	FHRC164	89	90	89.5	1	ORIG	CHIPS	CONE	Waste	Outside	561	L	0.008	0.0561	NAF
Fresh	196739	FHRC164	94	95	94.5	1	ORIG	CHIPS	CONE	Waste	Outside	175	L	0.005	0.0175	NAF
Fresh	196745	FHRC164	99	100	99.5	1	ORIG	CHIPS	CONE	Ore	Outside	6133	L	0.013	0.6133	PAF
Fresh	196752	FHRC164	104	105	104.5	1	ORIG	CHIPS	CONE	Ore	Outside	420	L	0.008	0.042	NAF
Fresh	196757	FHRC164	109	110	109.5	1	ORIG	CHIPS	CONE	Ore	Outside	1045	L	0.131	0.1045	NAF
Fresh	196762	FHRC164	114	115	114.5	1	ORIG	CHIPS	CONE	Ore	Outside	10006	192	6.951	1.0006	PAF
Fresh	196767	FHRC164	119	120	119.5	1	ORIG	CHIPS	CONE	Waste	Outside	669	44	0.052	0.0669	NAF
Fresh	196773	FHRC164	124	125	124.5	1	ORIG	CHIPS	CONE	Waste	Outside	423	L	0.138	0.0423	NAF
Fresh	196780	FHRC164	129	130	129.5	1	ORIG	CHIPS	CONE	Waste	Outside	425	L	0.031	0.0425	NAF
Fresh	196785	FHRC164	134	135	134.5	1	ORIG	CHIPS	CONE	Waste	Outside	126	L	0.005	0.0126	NAF
Fresh	196790	FHRC164	139	140	139.5	1	ORIG	CHIPS	CONE	Waste	Outside	1327	L	0.015	0.1327	NAF
Fresh	196795	FHRC164	144	145	144.5	1	ORIG	CHIPS	CONE	Waste	Outside	451	L	0.01	0.0451	NAF
Fresh	196802	FHRC164	149	150	149.5	1	ORIG	CHIPS	CONE	Waste	Outside	1979	L	0.027	0.1979	NAF
Fresh	196807	FHRC164	154	155	154.5	1	ORIG	CHIPS	CONE	Waste	Outside	1699	L	0.027	0.1699	NAF
Fresh	196813	FHRC164	159	160	159.5	1	ORIG	CHIPS	CONE	Ore	Outside	3247	L	0.35	0.3247	PAF-LC
Fresh	196818	FHRC164	164	165	164.5	1	ORIG	CHIPS	CONE	Ore	Outside	2431	39	0.182	0.2431	PAF-LC
Fresh	196823	FHRC164	169	170	169.5	1	ORIG	CHIPS	CONE	Ore	Outside	3053	46	2.028	0.3053	PAF-LC
Fresh	196830	FHRC164	174	175	174.5	1	ORIG	CHIPS	CONE	Ore	Outside	2112	L	0.373	0.2112	PAF-LC
Fresh	196835	FHRC164	179	180	179.5	1	ORIG	CHIPS	CONE	Waste	Outside	1173	L	0.059	0.1173	NAF

Fresh	196841	FHRC164	184	185	184.5	1	ORIG	CHIPS	CONE	Waste	Outside	627	L	0.085	0.0627	NAF
Fresh	196846	FHRC164	189	190	189.5	1	ORIG	CHIPS	CONE	Ore	Outside	9819	2512	0.747	0.9819	PAF
Fresh	196853	FHRC164	194	195	194.5	1	ORIG	CHIPS	CONE	Waste	Outside	704	19	0.006	0.0704	NAF
Fresh	196858	FHRC164	199	200	199.5	1	ORIG	CHIPS	CONE	Waste	Outside	2422	21	0.032	0.2422	PAF-LC
Fresh	196863	FHRC164	204	205	204.5	1	ORIG	CHIPS	CONE	Waste	Outside	1513	87	0.006	0.1513	NAF
Fresh	196868	FHRC164	209	210	209.5	1	ORIG	CHIPS	CONE	Waste	Outside	1148	204	0.062	0.1148	NAF
Ox	196869	FHRC165	0	1	0.5	1	ORIG	CHIPS	CONE	Waste	Inside	259	638	0.256	0.0259	NAF
Ox	196881	FHRC165	9	10	9.5	1	ORIG	CHIPS	CONE	Waste	Inside	24	110	0.005	0.0024	NAF
Trans	196891	FHRC165	19	20	19.5	1	ORIG	CHIPS	CONE	Waste	Inside	47	172	0.005	0.0047	NAF
Trans	196902	FHRC165	28	29	28.5	1	ORIG	CHIPS	CONE	Waste	Inside	1669	467	0.929	0.1669	NAF
Fresh	196908	FHRC165	34	35	34.5	1	ORIG	CHIPS	CONE	Waste	Inside	146	L	0.008	0.0146	NAF
Fresh	196914	FHRC165	39	40	39.5	1	ORIG	CHIPS	CONE	Waste	Outside	107	L	0.005	0.0107	NAF
Ox	197049	FHRC168	0	1	0.5	1	ORIG	CHIPS	CONE	Waste	Inside	95	484	0.034	0.0095	NAF
Ox	197055	FHRC168	4	5	4.5	1	ORIG	CHIPS	CONE	Waste	Inside	55	166	0.02	0.0055	NAF
Ox	197060	FHRC168	9	10	9.5	1	ORIG	CHIPS	CONE	Waste	Inside	22	60	0.005	0.0022	NAF
Ox	197065	FHRC168	14	15	14.5	1	ORIG	CHIPS	CONE	Waste	Inside	26	226	0.015	0.0026	NAF
Ox	197071	FHRC168	19	20	19.5	1	ORIG	CHIPS	CONE	Waste	Inside	99	390	0.024	0.0099	NAF
Trans	197083	FHRC168	29	30	29.5	1	ORIG	CHIPS	CONE	Waste	Inside	1032	346	0.092	0.1032	NAF
Fresh	197088	FHRC168	34	35	34.5	1	ORIG	CHIPS	CONE	Waste	Inside	277	L	0.029	0.0277	NAF
Fresh	197093	FHRC168	39	40	39.5	1	ORIG	CHIPS	CONE	Ore	Inside	771	51	0.022	0.0771	NAF
Fresh	197098	FHRC168	44	45	44.5	1	ORIG	CHIPS	CONE	Waste	Inside	184	L	0.156	0.0184	NAF
Fresh	197105	FHRC168	49	50	49.5	1	ORIG	CHIPS	CONE	Waste	Inside	362	L	0.042	0.0362	NAF
Fresh	197111	FHRC168	54	55	54.5	1	ORIG	CHIPS	CONE	Waste	Inside	469	L	0.143	0.0469	NAF
Fresh	197116	FHRC168	59	60	59.5	1	ORIG	CHIPS	CONE	Ore	Inside	2797	2076	0.316	0.2797	PAF-LC
Fresh	197121	FHRC168	64	65	64.5	1	ORIG	CHIPS	CONE	Ore	Inside	3299	2320	3.622	0.3299	PAF-LC
Fresh	197128	FHRC168	69	70	69.5	1	ORIG	CHIPS	CONE	Waste	Inside	644	L	0.251	0.0644	NAF
Fresh	197133	FHRC168	74	75	74.5	1	ORIG	CHIPS	CONE	Waste	Inside	497	L	0.047	0.0497	NAF
Fresh	197138	FHRC168	79	80	79.5	1	ORIG	CHIPS	CONE	Waste	Inside	2224	L	0.05	0.2224	PAF-LC
Fresh	197144	FHRC168	84	85	84.5	1	ORIG	CHIPS	CONE	Waste	Inside	899	L	0.095	0.0899	NAF
Fresh	197149	FHRC168	89	90	89.5	1	ORIG	CHIPS	CONE	Waste	Inside	331	L	0.028	0.0331	NAF

Fresh	197156	FHRC168	94	95	94.5	1	ORIG	CHIPS	CONE	Waste	Outside	133	36	0.023	0.0133	NAF
Ox	197159	FHRC169	0	1	0.5	1	ORIG	CHIPS	CONE	Waste	Inside	29	298	0.065	0.0029	NAF
Ox	197168	FHRC169	9	10	9.5	1	ORIG	CHIPS	CONE	Waste	Inside	26	94	0.005	0.0026	NAF
Ox	197181	FHRC169	19	20	19.5	1	ORIG	CHIPS	CONE	Waste	Inside	33	250	0.005	0.0033	NAF
Trans	197191	FHRC169	29	30	29.5	1	ORIG	CHIPS	CONE	Waste	Inside	103	257	0.005	0.0103	NAF
Fresh	197196	FHRC169	34	35	34.5	1	ORIG	CHIPS	CONE	Waste	Inside	575	118	0.015	0.0575	NAF
Fresh	197203	FHRC169	39	40	39.5	1	ORIG	CHIPS	CONE	Waste	Inside	366	L	0.04	0.0366	NAF
Fresh	197208	FHRC169	44	45	44.5	1	ORIG	CHIPS	CONE	Ore	Inside	249	L	0.037	0.0249	NAF
Fresh	197214	FHRC169	49	50	49.5	1	ORIG	CHIPS	CONE	Waste	Inside	2168	37	0.132	0.2168	PAF-LC
Fresh	197219	FHRC169	54	55	54.5	1	ORIG	CHIPS	CONE	Waste	Inside	300	L	0.051	0.03	NAF
Fresh	197224	FHRC169	59	60	59.5	1	ORIG	CHIPS	CONE	Waste	Inside	283	L	0.026	0.0283	NAF
Fresh	197231	FHRC169	64	65	64.5	1	ORIG	CHIPS	CONE	Ore	Inside	913	L	0.008	0.0913	NAF
Fresh	197236	FHRC169	69	70	69.5	1	ORIG	CHIPS	CONE	Ore	Inside	2329	L	0.024	0.2329	PAF-LC
Fresh	197242	FHRC169	74	75	74.5	1	ORIG	CHIPS	CONE	Waste	Inside	581	L	0.006	0.0581	NAF
Fresh	197247	FHRC169	79	80	79.5	1	ORIG	CHIPS	CONE	Waste	Outside	879	L	0.034	0.0879	NAF
Fresh	197254	FHRC169	84	85	84.5	1	ORIG	CHIPS	CONE	Waste	Outside	582	L	0.009	0.0582	NAF
Ox	197255	FHRC170	0	1	0.5	1	ORIG	CHIPS	CONE	Waste	Inside	22	166	0.085	0.0022	NAF
Ox	197264	FHRC170	9	10	9.5	1	ORIG	CHIPS	CONE	Waste	Inside	34	60	0.021	0.0034	NAF
Ox	197277	FHRC170	19	20	19.5	1	ORIG	CHIPS	CONE	Waste	Inside	28	151	0.023	0.0028	NAF
Ox	197287	FHRC170	29	30	29.5	1	ORIG	CHIPS	CONE	Waste	Inside	L	53	0.007	<0.002	NAF
Fresh	197297	FHRC170	39	40	39.5	1	ORIG	CHIPS	CONE	Waste	Inside	640	L	0.015	0.064	NAF
Fresh	197304	FHRC170	44	45	44.5	1	ORIG	CHIPS	CONE	Waste	Inside	89	L	0.019	0.0089	NAF
Fresh	197309	FHRC170	49	50	49.5	1	ORIG	CHIPS	CONE	Waste	Inside	2631	42	0.005	0.2631	PAF-LC
Fresh	197315	FHRC170	54	55	54.5	1	ORIG	CHIPS	CONE	Waste	Inside	826	L	0.013	0.0826	NAF
Fresh	197320	FHRC170	59	60	59.5	1	ORIG	CHIPS	CONE	Waste	Inside	826	L	0.015	0.0826	NAF
Fresh	197327	FHRC170	64	65	64.5	1	ORIG	CHIPS	CONE	Waste	Inside	276	L	0.007	0.0276	NAF
Fresh	197332	FHRC170	69	70	69.5	1	ORIG	CHIPS	CONE	Waste	Outside	774	L	0.138	0.0774	NAF
Fresh	197337	FHRC170	74	75	74.5	1	ORIG	CHIPS	CONE	Waste	Outside	632	L	0.013	0.0632	NAF
Fresh	197343	FHRC170	79	80	79.5	1	ORIG	CHIPS	CONE	Waste	Outside	556	L	0.046	0.0556	NAF
Fresh	197348	FHRC170	84	85	84.5	1	ORIG	CHIPS	CONE	Waste	Outside	1098	L	0.005	0.1098	NAF

Fresh	197355	FHRC170	89	90	89.5	1	ORIG	CHIPS	CONE	Waste	Outside	904	73	0.355	0.0904	NAF
Fresh	197360	FHRC170	94	95	94.5	1	ORIG	CHIPS	CONE	Waste	Outside	338	L	0.353	0.0338	NAF
Fresh	197365	FHRC170	99	100	99.5	1	ORIG	CHIPS	CONE	Waste	Outside	482	L	0.025	0.0482	NAF
Fresh	197371	FHRC170	104	105	104.5	1	ORIG	CHIPS	CONE	Waste	Outside	1352	L	0.521	0.1352	NAF
Fresh	197378	FHRC170	109	110	109.5	1	ORIG	CHIPS	CONE	Waste	Outside	1146	L	0.058	0.1146	NAF
Fresh	197383	FHRC170	114	115	114.5	1	ORIG	CHIPS	CONE	Waste	Outside	1404	53	0.164	0.1404	NAF
Fresh	197388	FHRC170	119	120	119.5	1	ORIG	CHIPS	CONE	Waste	Outside	703	L	0.014	0.0703	NAF
Fresh	197393	FHRC170	124	125	124.5	1	ORIG	CHIPS	CONE	Waste	Outside	281	L	0.018	0.0281	NAF
Fresh	197398	FHRC170	129	130	129.5	1	ORIG	CHIPS	CONE	Waste	Outside	729	L	0.022	0.0729	NAF
Fresh	197405	FHRC170	134	135	134.5	1	ORIG	CHIPS	CONE	Waste	Outside	725	L	0.112	0.0725	NAF
Fresh	197411	FHRC170	139	140	139.5	1	ORIG	CHIPS	CONE	Waste	Outside	517	L	0.042	0.0517	NAF
Ox	198042	FHRC176	0	1	0.5	1	ORIG	CHIPS	CONE	Waste	Inside	159	69	0.031	0.0159	NAF
Ox	198053	FHRC176	9	10	9.5	1	ORIG	CHIPS	CONE	Waste	Inside	52	228	0.021	0.0052	NAF
Ox	198063	FHRC176	19	20	19.5	1	ORIG	CHIPS	CONE	Waste	Inside	84	421	0.009	0.0084	NAF
Trans	198074	FHRC176	29	30	29.5	1	ORIG	CHIPS	CONE	Waste	Inside	54	90	0.008	0.0054	NAF
Trans	198086	FHRC176	39	40	39.5	1	ORIG	CHIPS	CONE	Waste	Inside	1415	724	0.043	0.1415	NAF
Fresh	198091	FHRC176	44	45	44.5	1	ORIG	CHIPS	CONE	Waste	Inside	595	58	0.011	0.0595	NAF
Fresh	198096	FHRC176	49	50	49.5	1	ORIG	CHIPS	CONE	Waste	Inside	1026	463	0.067	0.1026	NAF
Fresh	198103	FHRC176	54	55	54.5	1	ORIG	CHIPS	CONE	Waste	Inside	999	453	0.146	0.0999	NAF
Fresh	198108	FHRC176	59	60	59.5	1	ORIG	CHIPS	CONE	Waste	Outside	2323	17	0.048	0.2323	PAF-LC
Fresh	198114	FHRC176	64	65	64.5	1	ORIG	CHIPS	CONE	Waste	Outside	3541	92	0.179	0.3541	PAF-LC
Fresh	198119	FHRC176	69	70	69.5	1	ORIG	CHIPS	CONE	Waste	Outside	300	L	0.051	0.03	NAF
Fresh	198124	FHRC176	74	75	74.5	1	ORIG	CHIPS	CONE	Waste	Outside	1191	L	0.069	0.1191	NAF
Fresh	198131	FHRC176	79	80	79.5	1	ORIG	CHIPS	CONE	Waste	Outside	734	77	0.023	0.0734	NAF
Fresh	198136	FHRC176	84	85	84.5	1	ORIG	CHIPS	CONE	Waste	Outside	717	222	0.047	0.0717	NAF
Fresh	198142	FHRC176	89	90	89.5	1	ORIG	CHIPS	CONE	Waste	Outside	1024	159	0.071	0.1024	NAF
Fresh	198147	FHRC176	94	95	94.5	1	ORIG	CHIPS	CONE	Waste	Outside	355	L	0.017	0.0355	NAF
Ox	198152	FHRC177	0	1	0.5	1	ORIG	CHIPS	CONE	Waste	Inside	136	177	0.032	0.0136	NAF
Ox	198161	FHRC177	9	10	9.5	1	ORIG	CHIPS	CONE	Waste	Inside	44	321	0.025	0.0044	NAF
Ox	198172	FHRC177	19	20	19.5	1	ORIG	CHIPS	CONE	Waste	Inside	56	706	0.018	0.0056	NAF

Trans	198184	FHRC177	29	30	29.5	1	ORIG	CHIPS	CONE	Waste	Inside	193	692	0.012	0.0193	NAF
Trans	198194	FHRC177	39	40	39.5	1	ORIG	CHIPS	CONE	Waste	Inside	629	169	0.033	0.0629	NAF
Fresh	198199	FHRC177	44	45	44.5	1	ORIG	CHIPS	CONE	Waste	Inside	272	146	0.221	0.0272	NAF
Fresh	198206	FHRC177	49	50	49.5	1	ORIG	CHIPS	CONE	Waste	Inside	11149	193	0.145	1.1149	PAF
Fresh	198212	FHRC177	54	55	54.5	1	ORIG	CHIPS	CONE	Waste	Outside	8333	1393	0.229	0.8333	PAF
Fresh	198217	FHRC177	59	60	59.5	1	ORIG	CHIPS	CONE	Waste	Outside	634	96	0.013	0.0634	NAF
Fresh	198222	FHRC177	64	65	64.5	1	ORIG	CHIPS	CONE	Waste	Outside	517	50	0.055	0.0517	NAF
Fresh	198229	FHRC177	69	70	69.5	1	ORIG	CHIPS	CONE	Waste	Outside	644	60	0.021	0.0644	NAF
Ox	198316	FHRC179	0	1	0.5	1	ORIG	CHIPS	CONE	Waste	Outside	3527	440	0.104	0.3527	PAF-LC
Ox	198327	FHRC179	9	10	9.5	1	ORIG	CHIPS	CONE	Waste	Outside	L	L	0.01	<0.002	NAF
Ox	198337	FHRC179	19	20	19.5	1	ORIG	CHIPS	CONE	Waste	Outside	L	47	0.03	<0.002	NAF
Ox	198348	FHRC179	29	30	29.5	1	ORIG	CHIPS	CONE	Waste	Outside	41	380	0.286	0.0041	NAF
Trans	198360	FHRC179	39	40	39.5	1	ORIG	CHIPS	CONE	Waste	Outside	886	64	0.006	0.0886	NAF
Fresh	198365	FHRC179	44	45	44.5	1	ORIG	CHIPS	CONE	Waste	Outside	4388	624	0.07	0.4388	PAF
Fresh	198371	FHRC179	49	50	49.5	1	ORIG	CHIPS	CONE	Waste	Outside	246	12	0.036	0.0246	NAF
Fresh	198378	FHRC179	54	55	54.5	1	ORIG	CHIPS	CONE	Ore	Outside	1337	58	0.048	0.1337	NAF
Fresh	198383	FHRC179	59	60	59.5	1	ORIG	CHIPS	CONE	Ore	Outside	268	78	0.017	0.0268	NAF
Fresh	198388	FHRC179	64	65	64.5	1	ORIG	CHIPS	CONE	Ore	Outside	742	27	16.813	0.0742	NAF
Fresh	198393	FHRC179	69	70	69.5	1	ORIG	CHIPS	CONE	Ore	Outside	3933	145	0.102	0.3933	PAF-LC
Fresh	198398	FHRC179	74	75	74.5	1	ORIG	CHIPS	CONE	Ore	Outside	1817	1006	0.25	0.1817	NAF
Fresh	198405	FHRC179	79	80	79.5	1	ORIG	CHIPS	CONE	Waste	Outside	988	597	0.143	0.0988	NAF
Fresh	198411	FHRC179	84	85	84.5	1	ORIG	CHIPS	CONE	Waste	Outside	397	83	0.042	0.0397	NAF
Fresh	198416	FHRC179	89	90	89.5	1	ORIG	CHIPS	CONE	Waste	Outside	719	62	0.023	0.0719	NAF
Fresh	198421	FHRC179	94	95	94.5	1	ORIG	CHIPS	CONE	Waste	Outside	145	44	0.034	0.0145	NAF