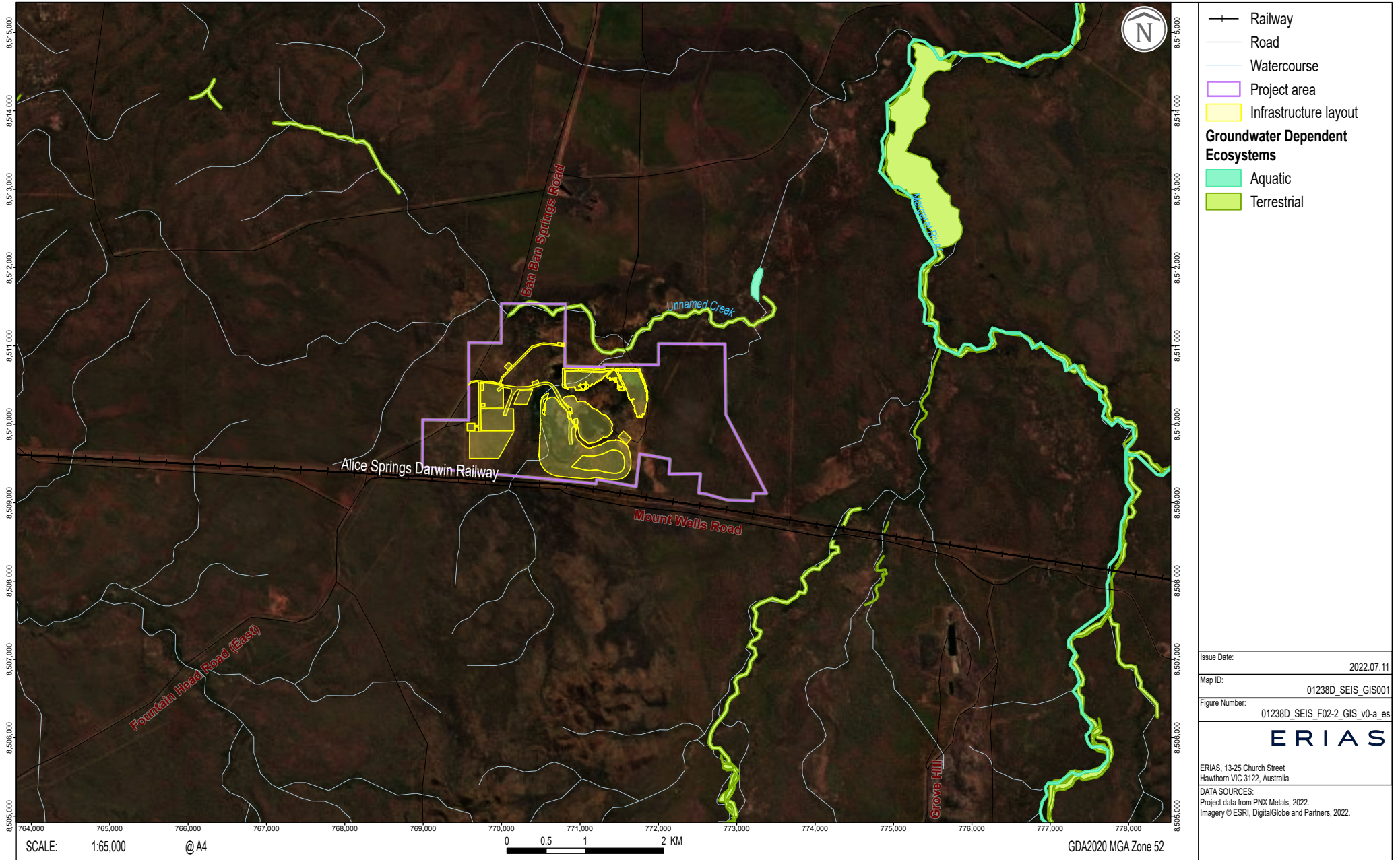


# IDENTIFIED GDES IN THE VICINITY OF THE PROJECT AREA

Fountain Head Gold Project | SEIS Addendum

FIGURE 2.2



Issue Date: 2022.07.11

Map ID: 01238D\_SEIS\_GIS001

Figure Number: 01238D\_SEIS\_F02-2\_GIS\_v0-a\_es



ERIAS, 13-25 Church Street  
Hawthorn VIC 3122, Australia

DATA SOURCES:  
Project data from PNX Metals, 2022.  
Imagery © ESRI, DigitalGlobe and Partners, 2022.