

PRIMARY GOLD



Rustler's Roost & Quest 29 Open-Cut Mine Redevelopment

Erosion and Sediment Control Plan
Volume 2: Appendix A1 to Appendix A2
September 2021

RELIANCE, USES and LIMITATIONS

This report is copyright and is to be used only for its intended purpose by the intended recipient and is not to be copied or used in any other way. The report may be relied upon for its intended purpose within the limits of the following disclaimer.

This study, report and analyses have been based on the information available to Surface Water & Erosion Solutions and Elder Enviro Pty Ltd at the time of preparation. Surface Water & Erosion Solutions and Elder Enviro Pty Ltd accepts responsibility for the report and its conclusions to the extent that the information was sufficient and accurate at the time of preparation. Surface Water & Erosion Solutions and Elder Enviro Pty Ltd do not take responsibility for errors and omissions due to incorrect information or information not available at the time of preparation of the study, report, or analyses.

Photograph Cover Sheet: Rustler's Roost Pit looking north July 2021. Photograph: K Evans 2021

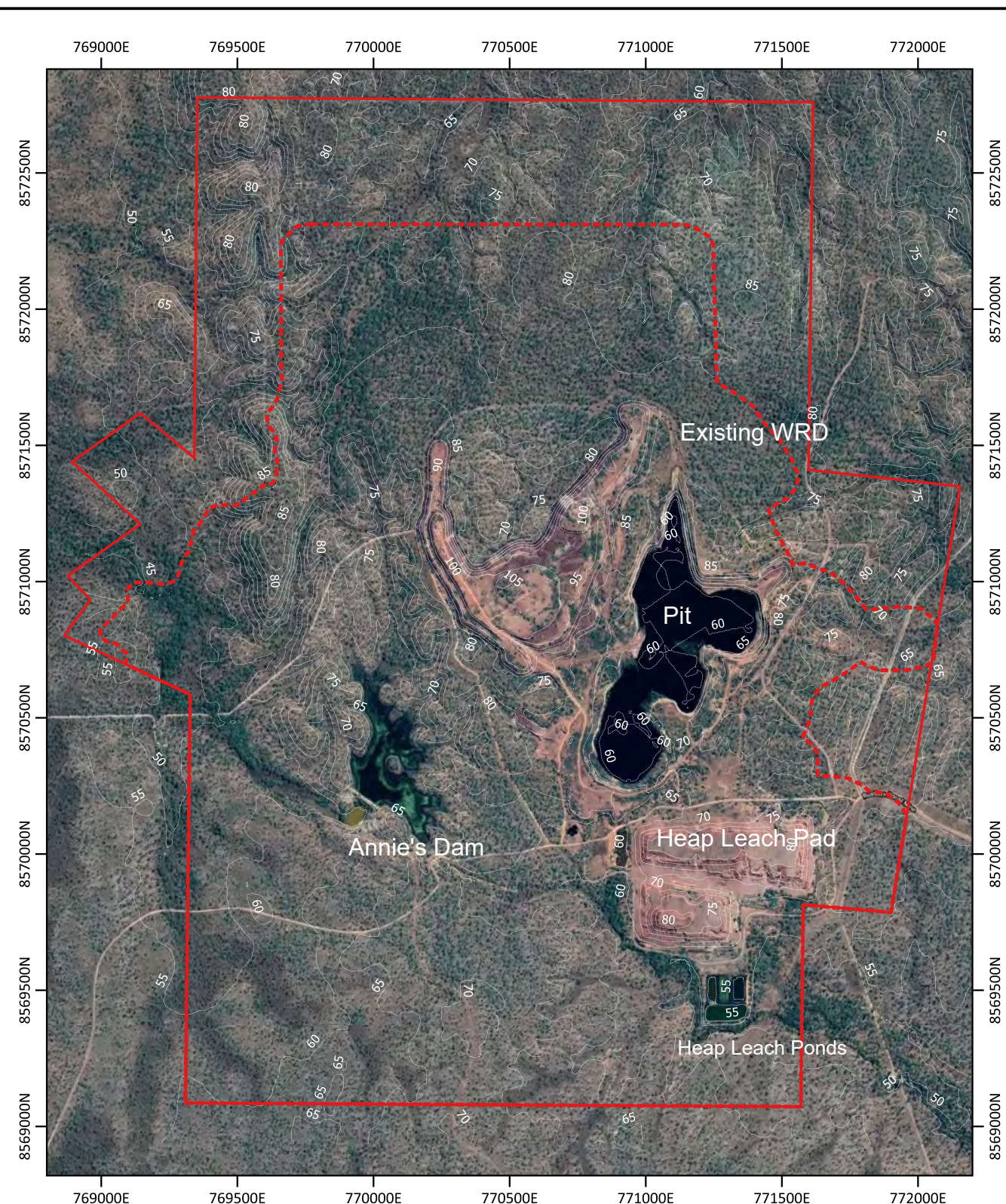
ACRONYMS & ABBREVIATIONS

BOM	Bureau of Meteorology
CPEng	Chartered Professional Engineer
CPESC	Certified Professional in Erosion and Sediment Control
EMSP	Environmental Management System and Plans
ESCP	Erosion and Sediment Control Plan
IECA	International Erosion Control Association
LOM	Life of Mine
ML	Mineral Lease
MMP	Mining Management Plan
NT	Northern Territory
RR	Rustler's Roost
TSF	Tailing Storage Facility
WMP	Water Management Plan
WRD	Waste rock dump

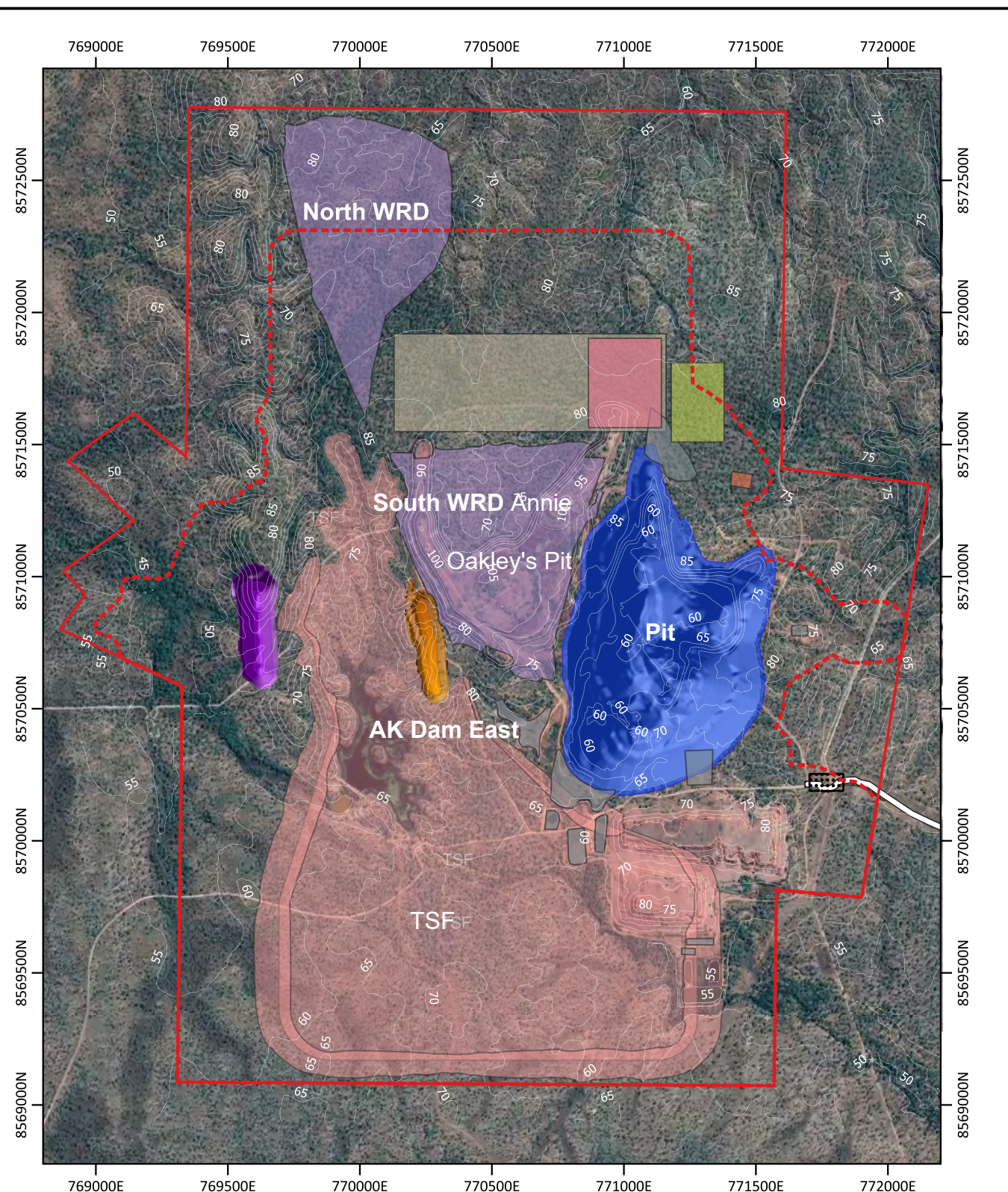
TABLE OF CONTENTS

Appendix A.1 Topography of the RR Current Site and the Proposed Closure Site..... 5
Appendix A.2 Topography - Q29 & Accommodation Camp 7

Appendix A.1 Topography of the RR Current Site and the Proposed Closure Site



Above. Current topographic contours at Rustler's Roost site.



Above. Topographic contours at Rustler's Roost at closure with the TSF and WRDs. This layout was used for soil loss calculations.

Legend

- Development Envelope
- ML disturbed area
- Proposed Infrastructure WRD
- Annie Oakley's Pit
- AK Dam East
- Pit 1 final
- ROM
- GRES Plant Area
- Magazine
- Laydown Area
- Proposed Additions
- Administration Office
- Haul Road
- Proposed Tailing Storage Facility
- TSF Bund Option 2 45
- 71
- 97

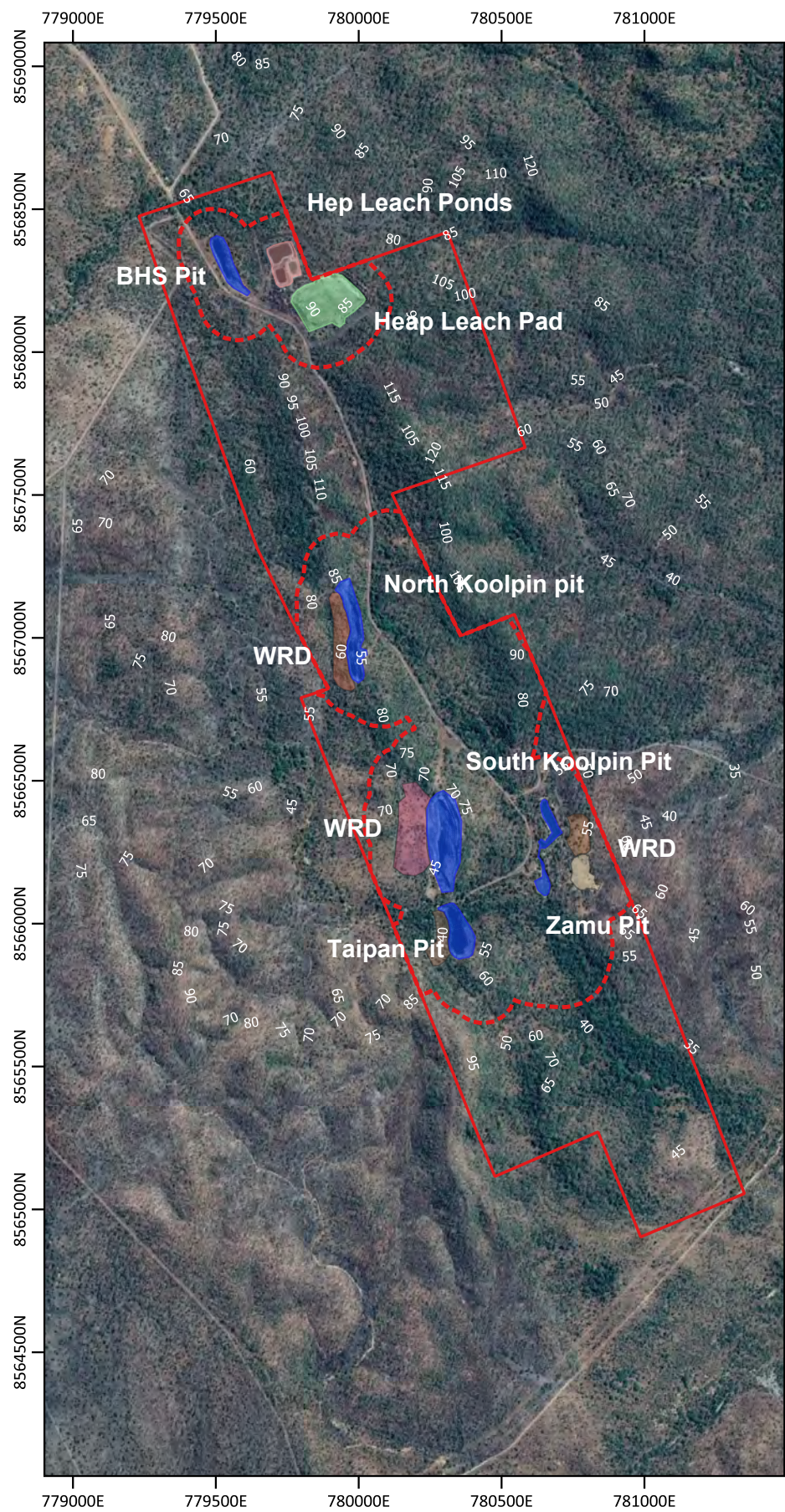
Tim Elder

Tim Elder #4399

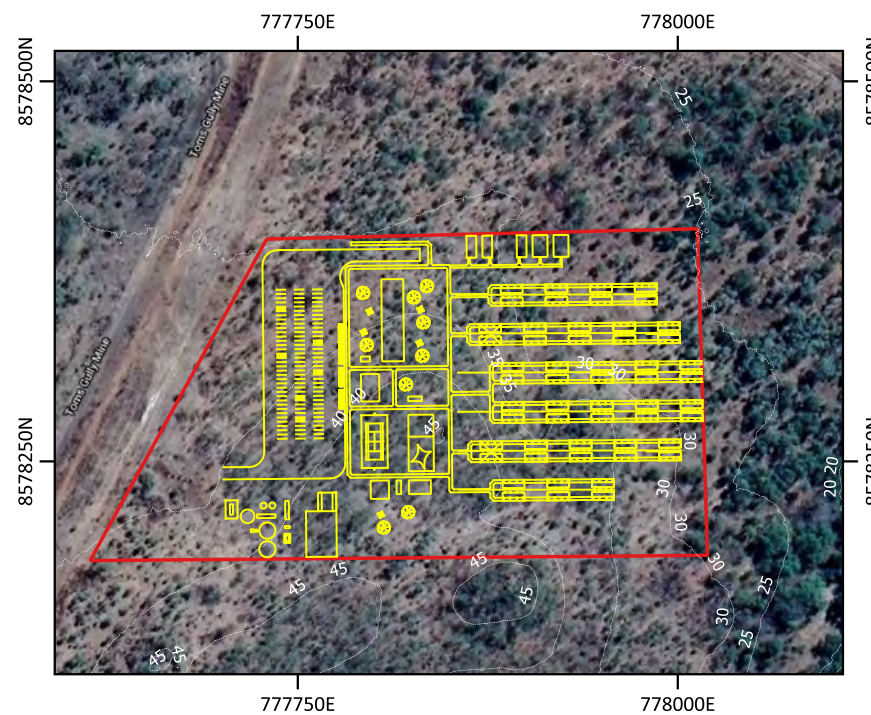


Designed	Drawn	Checked	Sheet size
Date		Sheet No.	
		Sheet of	

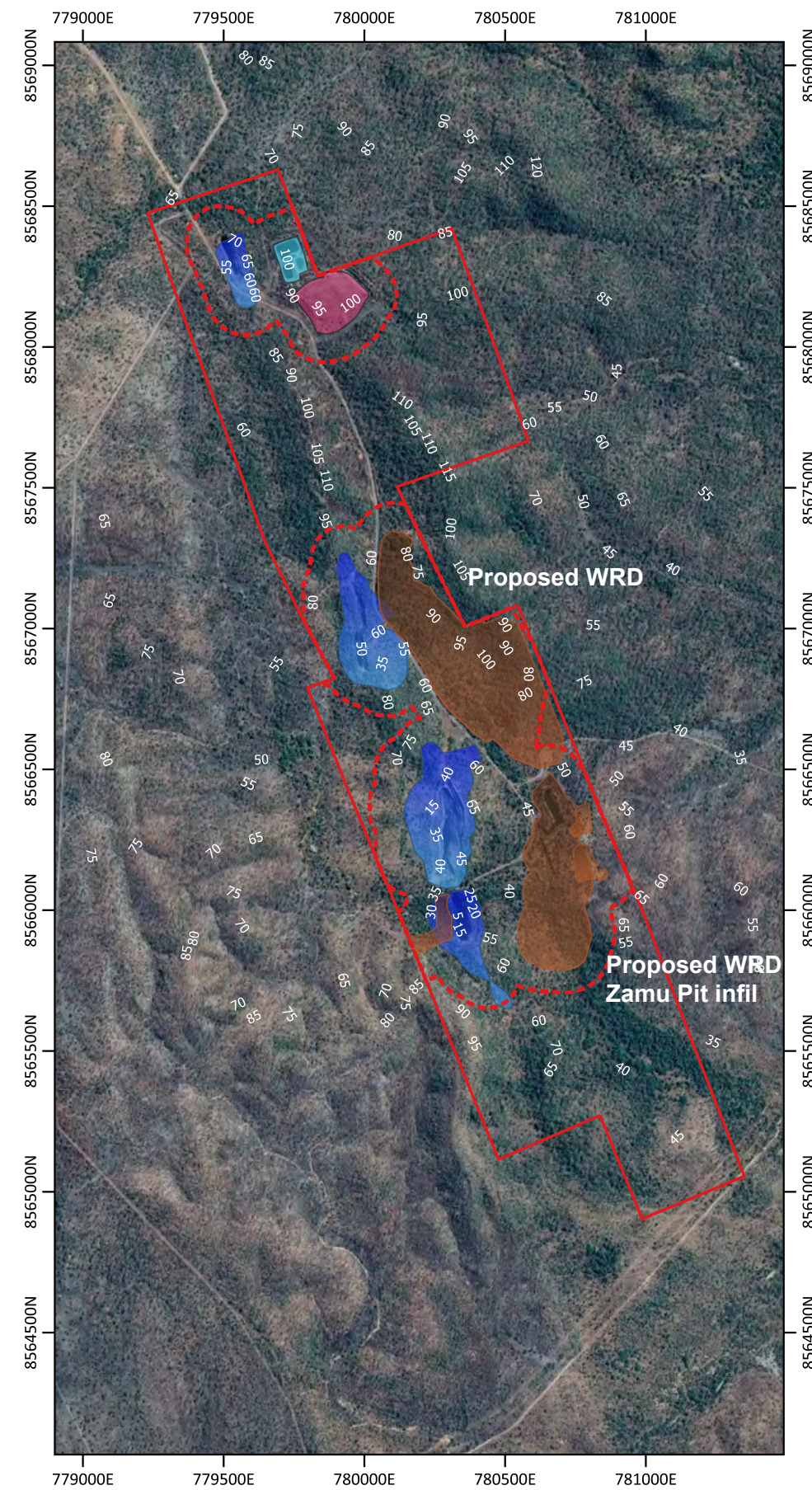
Appendix A.2 Topography - Q29 & Accommodation Camp



Above. Current topographic contours at Rustler's Roost site.



- Development_envelope
- Pre-mine Landform**
- Sth Koolpin Pit
- Zamu WRD 2
- Zamu Pit
- Zamu WRD 1
- Sth Koolpin WRD
- Nth Koolpin Pit
- Nth Koolpin WRD
- Hep Leach Ponds
- Hep Leach Pad
- BHS Pit
- Taipan WRD
- Taipan Pit
- Hep Leach Pad
- Hep Leach Pond
- Pit
- WRD
- Q29 Mineral Development Area
- Accommodation Camp Layout
- Camp



Above. Topographic contours at Rustler's Roost at closure with the TSF and WRDs. This layout was used for soil loss calculations.